

FLOOR LAYOUT
SCALE 1 : 100 @ A1

ABLUTIONS & PLUMBING :

PROVIDE TOILET CUBICLE AS SHOWN WITH MECHANICAL EXTRACTION, AIR TRANSFER GRILL IN DOOR, ALL EXPOSED PIPES TO BE CHROME, WALLS TO BE TILED 200 X 200mm JOHNSON & JOHNSON WHITE TILES TO FULL HEIGHT, 400 X 500mm MIRROR ABOVE WASH HAND BASIN.

PROVIDE A 1200mm SINGLE STAINLESS STEEL SINK WITH STEEL CUPBOARDS UNIT BELOW. A THREE-TILE SPLASH BACK USING 200 x 200mm GLAZED CERAMIC WHITE TILES AND WHITE GROUTING INSTALLED THE FULL LENGTH OF UNIT.

FLOOR FINISH :

REMOVE ALL LOOSE RUBBLE AND MAKE GOOD DAMAGED FLOOR AREAS. TO RECEIVED 50mm SCREED IN PREPARATION FOR FLOOR FINISH.

INTERNAL PLASTER :

REMOVE ALL UNEVEN PATCHES, PEELED PAINT, FIXINGS ETC FROM WALL, BEAMS AND COLUMNS. MAKE GOOD ALL INTERNAL WALL, COLUMNS AND BEAMS WITH ONE COAT 1:5 CEMENT PLASTER OR RHINOLITE FINISH.

NEW NATURAL ANODIZED ALUMINIUM FRAME DOOR AND SIDE GLASS PANELS AS PER AAAMSA SPECIFICATION BY SPECIALIST.

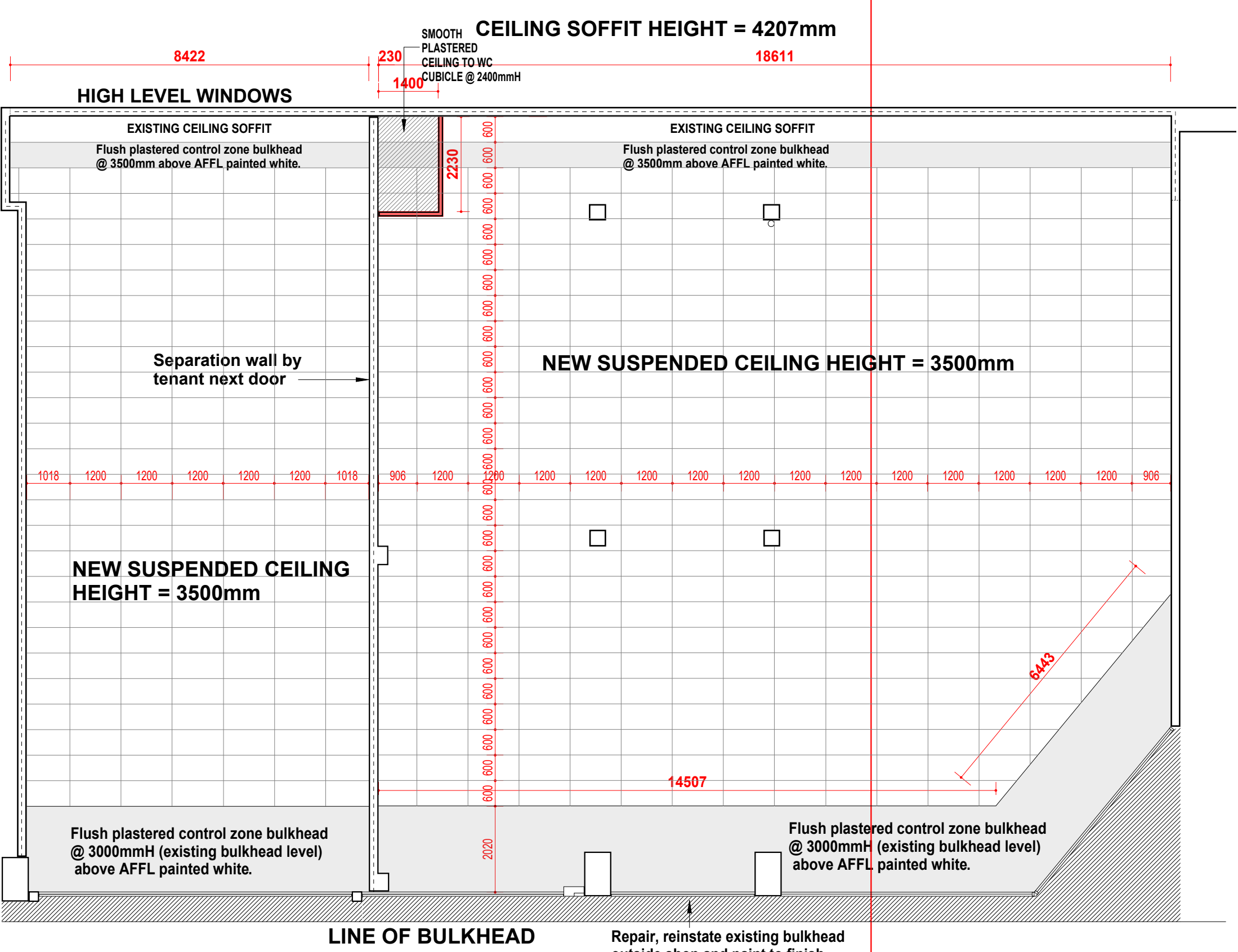
PREPARE PLASTERED OPENING TO RECEIVE FRAME COMPLETE BUILT INTO OPENING WITH PVC EXPANSION BOLTS WITH SPACERS AS PER MANUFACTURERS SPECIFICATION PROTECT ALUMINIUM WHILE BUILDING IN, CLEAN THOROUGHLY

ALL ACCESSORIES SHALL BE OF APPROVED ALUMINIUM, STAINLESS STEEL AND/OR NON-CORROSIVE MATERIALS COMPATIBLE WITH ALUMINIUM.

ALL GLAZING TO COMPLY WITH SABS0137, NN2 AND NN3 AND SIZED AS PER TABLE:
3mm = 0.75 m²
4mm = 1.5m²
5mm = 2.1 m²
6mm = 3.2m²
SAFETY GLASS TO BE ETCHED.

SECTION A
SCALE 1 : 50 @ A1

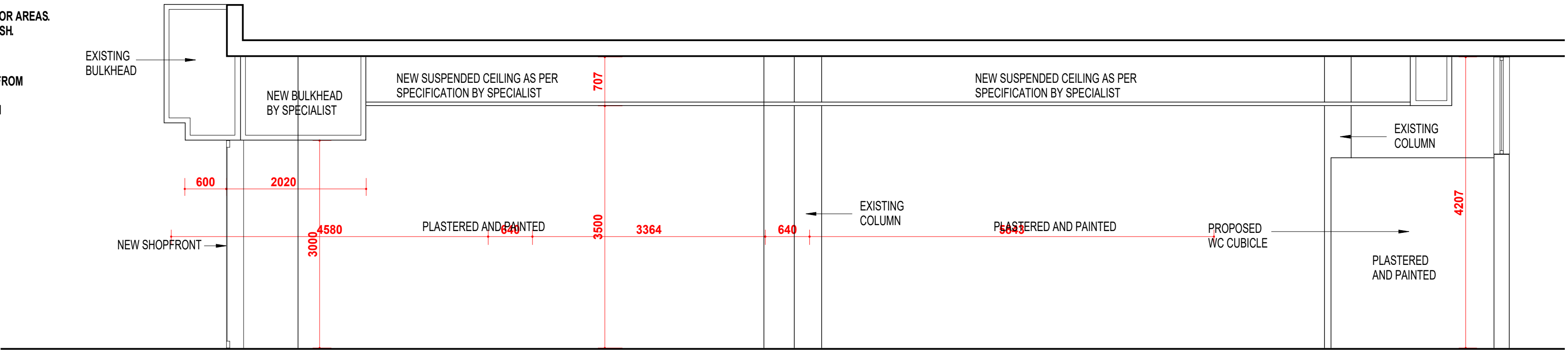
NOTE : ALL MEASUREMENTS FIRSTLY TO BE TAKEN ON SITE BEFORE MANUFACTURING OF ALUMINIUM SHOPFRONT.



CEILING LAYOUT
SCALE 1 : 100 @ A1

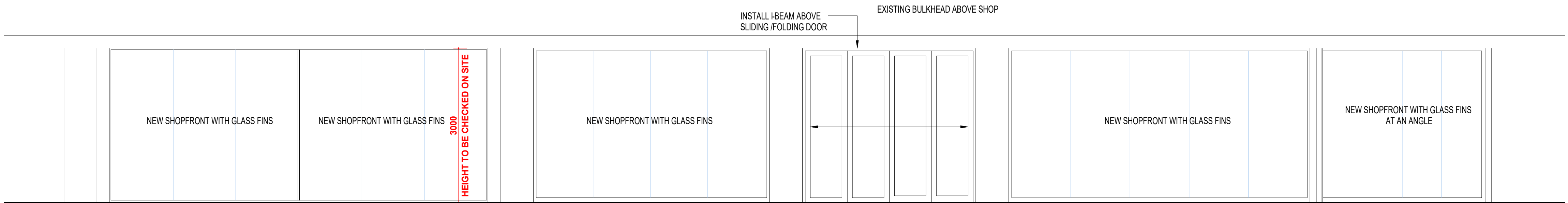
BULKHEAD:
12.5mm thk "GYPROC" GYPSUM PLASTERBOARD, INSTALLED COMPLETE, WITH STANDARD STEEL BRANDERING, HUNG WITH SUSPENSION BRACKETS, THE JOINTS COVERED WITH PROPRIETRY SCIM TAPE & JOINTING COMPOUND, THE WHOLEFULLY SKIMMED, INCLUDING EXPANSION JOINT TRIMMERS SHADOW LINE RECESSES AND CORNER BEADS.

SUSPENDED CEILING:
1200 x 600 x 12.5mm thk "FROST WHITE GYPREX VINYL FACED CEILING TILES" INSTALL ONTO AND INCLUDING A "DONN QRC T3TV " EXPOSED SUSPENSION GRID SYSTEM, INCLUDING NECCESARY HOLD-DOWN CLIPS AND WEDGES, ETC., ALL INSTALLED STRICT ACCORDANCE WITH THE MANUFACTURER'S INSTRUCTIONS.



SECTION A
SCALE 1 : 50 @ A1

NOTE : ALL MEASUREMENTS FIRSTLY TO BE TAKEN ON SITE BEFORE MANUFACTURING OF ALUMINIUM SHOPFRONT.



ELEVATION - SHOPFRONTS
SCALE 1 : 50 @ A1

NEW NATURAL ANODIZED SHOPFRONTS AND ENTRANCE DOOR BY SPECIALIST

SERVER/D/PROJECT/WINDOWS/WORKING/PLAN.wnd

V.O.	DATE.	DESCRIPTION.
---	----	----

PAINT WORK :

ON PLASTER:

1 X COAT "DULUX PLASTER PRIMER" PRODUCT CODE T 1011 PRIMER AND TWO COATS INTERNAL QUALITY TEXTURED "DULUX LUXURIOUS SILK" PRODUCT CODE D22, PURE ACRYLIC PAINT TO NEW INTERIOR CEMENT PLASTER O.E.A APPROVED PRODUCT FROM DULUX. SURFACE TO BE CLEAN, DRY AND DUST FREE WITH A MOISTURE CONTENT OF LESS THAN 15% . PAINT TO BE APPLIED STRICTLY TO MANUFACTURERS GUIDELINES & SPECIFICATIONS.

ON METAL, STEEL ETC :

SURFACE TO BE CLEAN, DRY AND RUST FREE, PRIME SURFACE WITH ONE COAT " DULUX PRIMER FOR STEEL" WITH AN OVER COATING TIME OF 18HOURS, UNDERCOAT WITH ONE COAT "DULUX TRADE UNIVERSAL UNDERCOAT (CODE T1001) AND FINISH WITH TWO COATS "DULUX EGGSHELL ENAMEL" (CODE D25) O.E.A PRODUCT OF DULUX.

ON WOOD :

SAND WITH ABRASIVE PAPER, LEAVING SURFACE CLEAN AND DUST FREE, PRIME SURFACE WITH ONE COAT "DULUX PRIMER FOR WOOD", CODE D33, UNDERCOAT WITH ONE COAT "DULUX TRADE UNIVERSAL UNDERCOAT (CODE : T1001) AND FINISH WITH TWO COATS "DULUX TRADE EGGSHELL ENAMEL" (CODE T3002) O.E.A PRODUCT OF DULUX.

ON FLOATED PLASTERED SURFACES:

SURFACE TO BE CLEAN, DRY AND DUST FREE WITH MOISTURE CONTENT LESS THAN 15%. 1 X COAT "DULUXPLASTER PRIMER" PRODUCT CODE T 1011 PRIMER AND TWO COATS INTERNAL QUALITY TEXTURED "DULUX LUXURIOUS SILK" PRODUCT CODE D22, PURE ACRYLIC PAINT TO NEW INTERIOR DRYWALL & CEILINGS O.E.A APPROVED PRODUCT FROM DULUX. PAINT TO BE APPLIED STRICTLY TO MANUFACTURERS GUIDELINES & SPECIFICATIONS.

FLOOR FINISH :

REMOVE ALL EXISTING FLOOR FINISHES INCLUDING RAISED FLOOR. REMOVE ALL GROUT AND GLUE MARKS AND MAKE EVEN FLOOR FINISH TO RECEIVED 50mm SCREED IN PREPARATION FOR TENANTS FLOOR FINISH

INTERNAL PLASTER :

REMOVE ALL UNEVEN PATCHES, PEELED PAINT, FIXINGS ETC FROM WALL, BEAMS AND COLUMNS. MAKE GOOD ALL INTERNAL WALL, COLUMNS AND BEAMS WITH ONE COAT 1:5 CEMENT PLASTER / RHONLITE AND FINISH WITH WHITE PAINT AS PER SPECIFICATION

ArchiDunamis (Pty) Ltd
Providing Dynamic Architectural Solutions

PARK STATION- JOHANNESBURG BUTCHERY EXTENSION & SUB-DIVISION & WHITE-BOX NEW STORE

description
FLOOR & CEILING LAYOUTS, SECTION & ELEVATION
SCALE 1 : 50 & 100

proj no	date	dwg no	vo no
2022 04	16 SEPT 2022	A1-D1	0