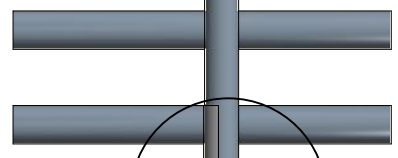
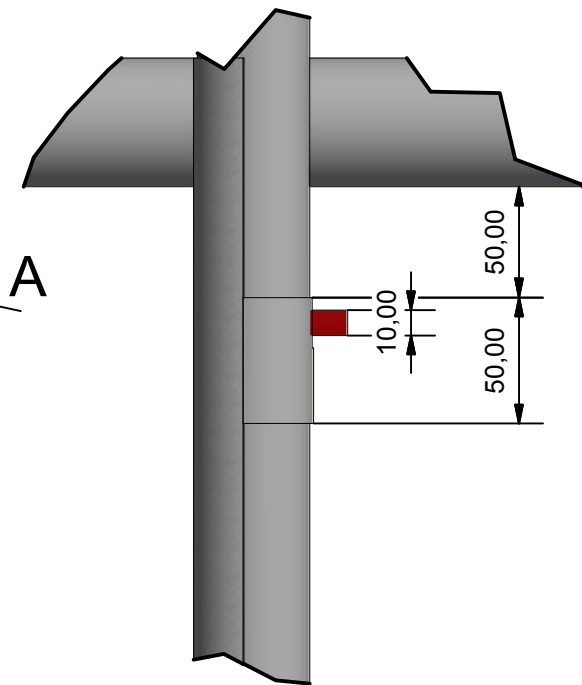


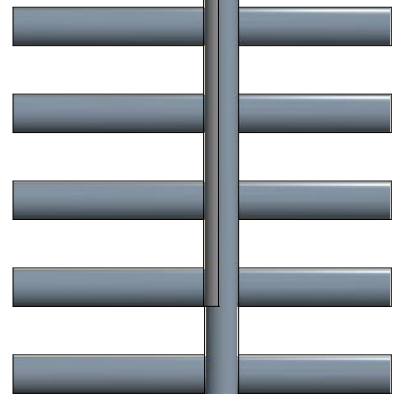
ECONOMISER



A

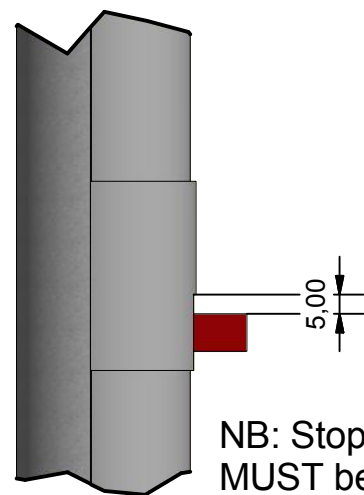


B

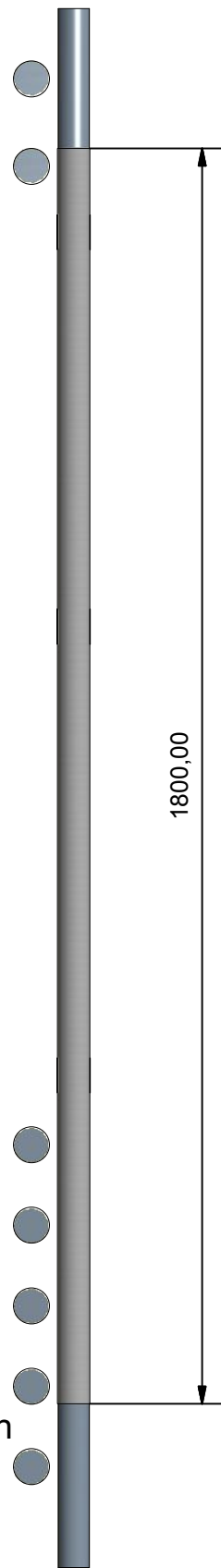


REHEATER 1

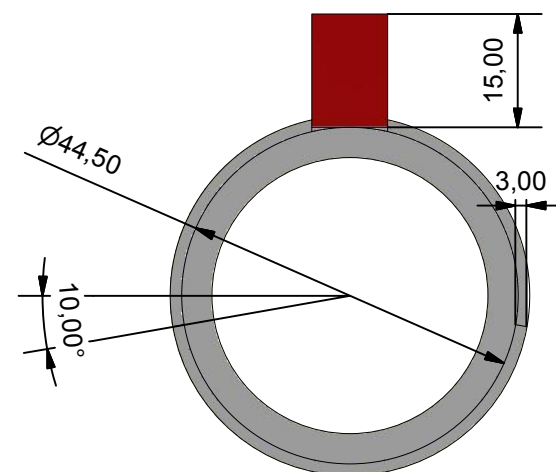
B



NB: Stopper Block MUST be fitted with a 5mm gap between shield and stopper block as shown on the sketch.

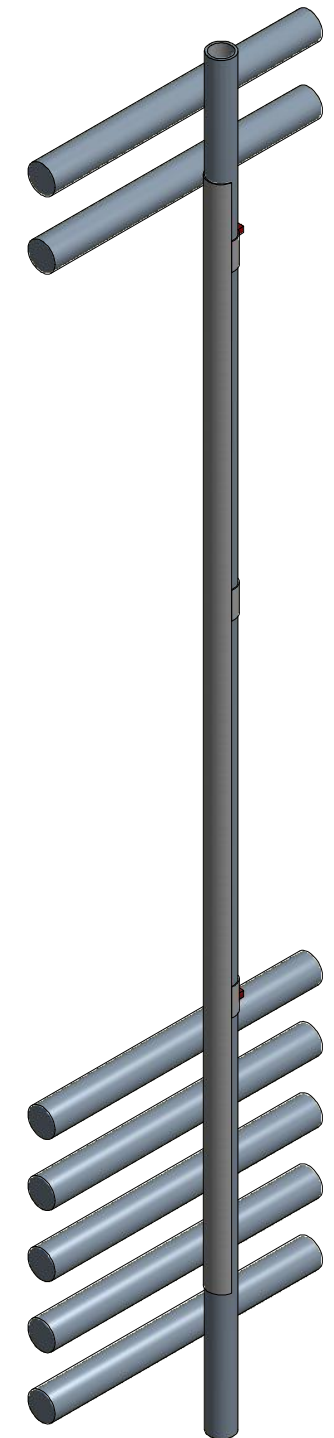


1800,00



NB: See sketch for placement of shield, and shield has to face the soot blower perpendicular.


The bangle need to be fitted 50mm from the tubes



ELEMENT#	ST
TUBE#	NA

THIS DRAWING IS THE PROPERTY OF CARAB TECHNOLOGIES. IT MAY NOT BE ALTERED, COPIED OR ISSUED TO THIRD PARTIES WITHOUT THE WRITTEN CONSENT OF CARAB TECHNOLOGIES

DRAWN BY:	MB Pretorius	CHECKED BY:	DJP Huysamen	APPROVED BY:	AW Claassens
-----------	--------------	-------------	--------------	--------------	--------------

	TITLE: 76ml Slingtube Shield-Rev1	ESKOM DWG REF: 0.61/2129_REV_5
	TUTUKA POWER STATION	

CARAB TECHNOLOGIES	DATE: 22/08/2011	SCALE: NA	CARAB DWG NO: TUT-PP-GEN-125
--------------------	---------------------	--------------	---------------------------------

ITEM	STOCK NO	MATERIAL	O/D	WT	MIN 't
SHIELD	NA	310 STAINLESS STEEL	50.5	3	NA
STOPPER BLOCK	NA	13CrMo44	NA	NA	NA