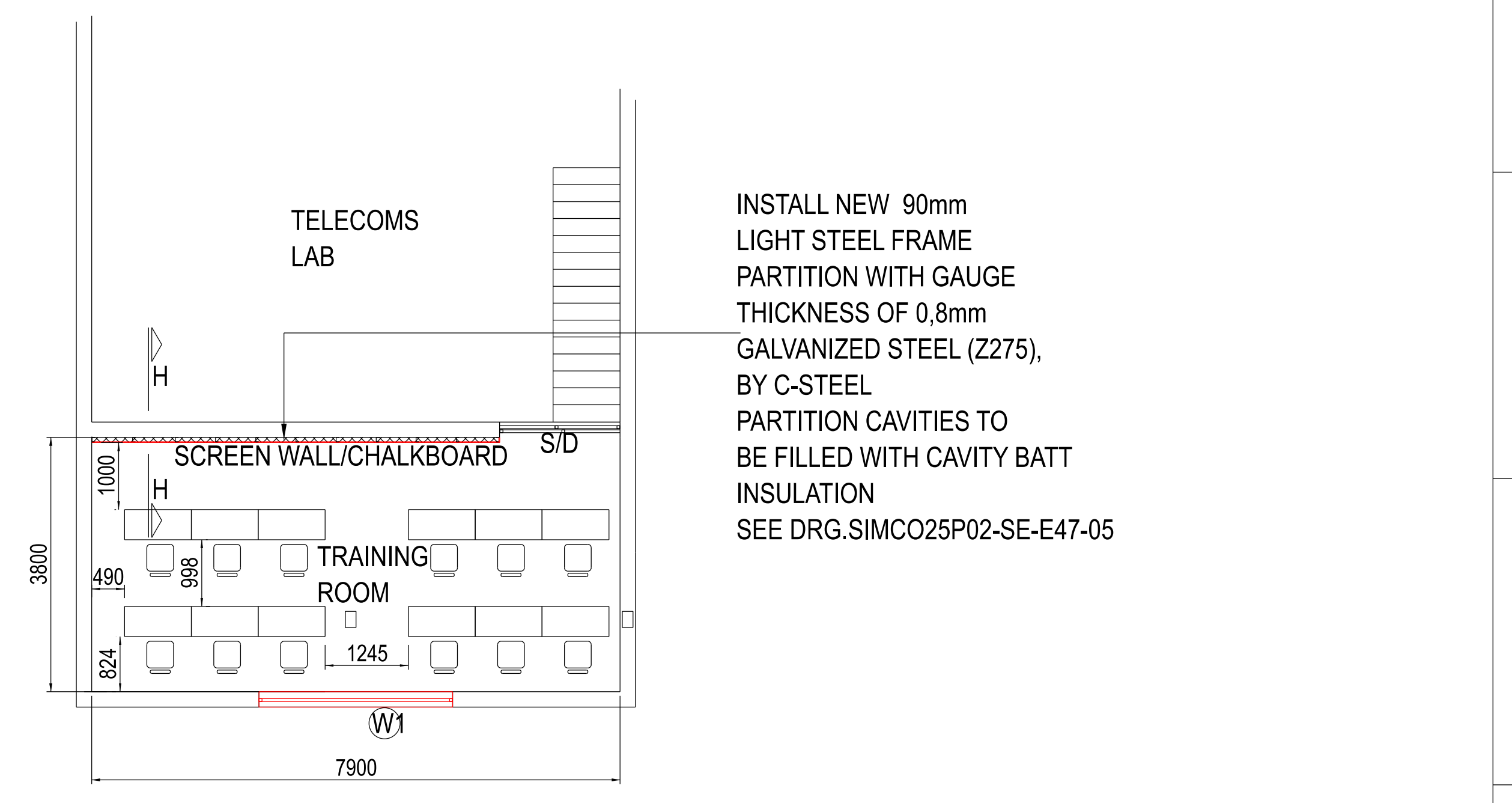
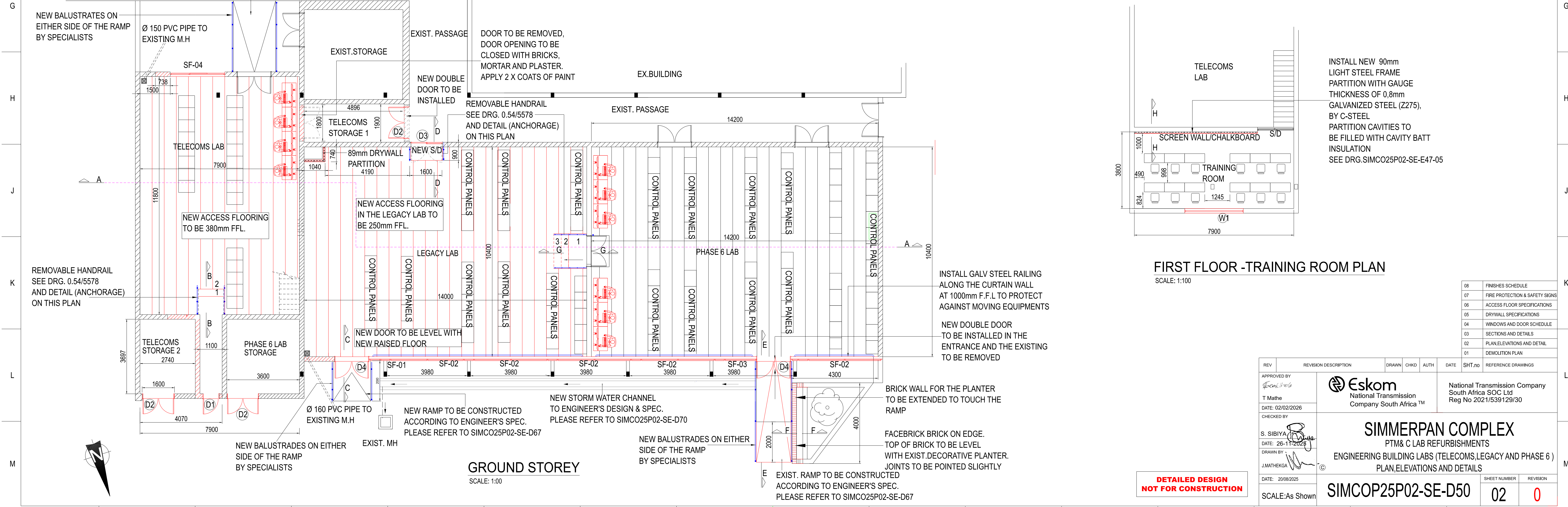


DESIGN INTENT DRAWING
TYPICAL STAINLESS STEEL BALUSTRADE .
SPECIALIST TO PROVIDE SHOP DRAWINGS
TO BE APPROVED BY ARCHITECT BEFORE MANUFACTURE.



INSTALL NEW 90mm
LIGHT STEEL FRAME
PARTITION WITH GAUGE
THICKNESS OF 0,8mm
GALVANIZED STEEL (Z275),
BY C-STEEL
PARTITION CAVITIES TO
BE FILLED WITH CAVITY BATT
INSULATION
SEE DRG.SIMCO25P02-SE-E47-05

FIRST FLOOR - TRAINING ROOM PLAN
SCALE: 1:100

08	FINISHES SCHEDULE
07	FIRE PROTECTION & SAFETY SIGNS
06	ACCESS FLOOR SPECIFICATIONS
05	DRYWALL SPECIFICATIONS
04	WINDOWS AND DOOR SCHEDULE
03	SECTIONS AND DETAILS
02	PLAN,ELEVATIONS AND DETAIL
01	DEMOLITION PLAN

APPROVED BY <i>T. Mathe</i> T. Mathe DATE: 02/02/2026	 Eskom National Transmission Company South Africa™ National Transmission Company South Africa SOC Ltd Reg No 2021/539129/30	SIMMERPAN COMPLEX PTM& C LAB REFURBISHMENTS ENGINEERING BUILDING LABS (TELECOMS,LEGACY AND PHASE 6) PLAN,ELEVATIONS AND DETAILS	SHEET NUMBER 02	REVISION 0
CHECKED BY <i>S. Sibuya</i> S. SIBUYA DATE: 26-11-2025 DRAWN BY <i>J. Matheka</i> J. MATHEKA DATE: 20/08/2025			SCALE: As Shown	SIMCOP25P02-SE-D50

**DETAILED DESIGN
NOT FOR CONSTRUCTION**