

UMZIMVUBU LOCAL MUNICIPALITY PROVINCE OF THE EASTERN CAPE



INFRASTRUCTURE & PLANNING DEPARTMENT

INSTALLATION OF BOREHOLE FOR NEW MUNICIPAL OFFICES

CONTRACT No.: UMZ/2023-24/INFRA/CAP/023

@

KWABHACA

Bidder

Name:

CRS NO:

Total of the prices inclusive of value added tax: R

***BIDDER'S CLOSES AT THE OFFICES OF: UMZIMVUBU LOCAL MUNICIPALITY OFFICES KWABHACA AT
12H00 ON 19 February 2024***

Documents are to be delivered by hand in the tender box as no faxed copies will be acceptable; the box is situated at 'Reception' of Umzimvubu Municipality, **Dabula Street, Mount Frere.**

NO LATE SUBMISSION WILL BE CONSIDERED

Issued and by:
UMZIMVUBU LOCAL MUNICIPALITY
DABULA STREET
MOUNT FRERE
5090

Municipal Manager : G.P.T. Nota
Telephone : 039 – 255 8500



INSTALLATION OF BOREHOLE FOR NEW MUNICIPAL OFFICES**UMZIMVUBU LOCAL MUNICIPALITY****CONTRACT NO. UMZ/2023-24/INFRA/CAP/023****FOR****INSTALLATION OF BOREHOLE FOR NEW MUNICIPAL OFFICES****CONTENTS**

Number	Heading	Page	Colours
The Tender			
Part T1: Tendering procedures			
T1.1	Tender Notice and Invitation to Tender	T5-T6	White
T1.2	Tender Data	T7-T13	White
Part T2: Returnable documents			
T2.1	List of Returnable Documents	T15	Blue
T2.2	Returnable Schedules	T16-T50	Blue
The Contract			
Part C1: Agreements and Contract Data			
C1.1	Form of Offer and Acceptance	C3-C6	Green
C1.2	Contract Data	C7-C11	Green
C1.3	Form of Guarantee	C12-C13	Green
C1.4	Agreement in terms of Section 37(2) of the Occupational Health and Safety Act No. 85 of 1993	C14-C15	Green
Part C2: Pricing Data			
C2.1	Pricing Instructions	C16-C19	Yellow
C2.2	Bill of Quantities / Schedule of Quantities	C20.1-C20.15	Yellow
Part C3: Scope of Work			
C3.1	Standard Specifications	C23	Pink
C3.2	Project Specifications	C24	Pink
C3.2	PART A: General	C24-C33	Pink
C3.2	PART B: Amendments to The Standard Specifications	C34-C75	Pink
C3.3	Particular Specifications	C76-C92	Pink
Part C4: Site Information			
C4.1	Locality Plan	C94	White
C4.2	Example of Contract Signboard Details	C95	White
C4.3	Drawings	C96	White

**INSTALLATION OF BOREHOLE FOR NEW MUNICIPAL OFFICES
DOCUMENT CHECKLIST**

This document checklist is provided to assist the tenderer.

	ITEMS	CHECKED
1	Returnable Schedules in Section T2.2	<input type="checkbox"/>
2	Correct Tender Offer carried forward to Form of Offer and Acceptance and the Form of Offer duly completed and signed.....	<input type="checkbox"/>
3	Schedule of Quantities:	
	i) Completed in BLACK INK only.....	<input type="checkbox"/>
	ii) Corrections crossed out and initialled	<input type="checkbox"/>
4	Contract specific data provided by the Contractor	<input type="checkbox"/>

INSTALLATION OF BOREHOLE FOR NEW MUNICIPAL OFFICES
T1: TENDERING PROCEDURES

TABLE OF CONTENTS

T1.1	TENDER NOTICE AND INVITATION TO TENDER	T5
T1.2	TENDER DATA	T7

INSTALLATION OF BOREHOLE FOR NEW MUNICIPAL OFFICES

T1.1 TENDER NOTICE AND INVITATION TO TENDER

INSTALLATION OF BOREHOLE FOR NEW MUNICIPAL OFFICES

T1.1 Tender Notice and Invitation to Tender

67 Church Street, Mt Ayliff, 4735
 Tel: +27 (0)39 254 6000
 Fax: +27 (0) 39 255 0167
 Web : www.umzimvubu.gov.za



813 Main Street , Mount Frere
 P/ Bag 9020, M t Frere , 5090
 Tel: +27 (0)39 255 8500 /166
 Fax: +27 (0) 39 255 0167

ADVERT DATE: 09 June 2023

Bidders are hereby invited to submit their tenders for the following capital projects:

Project Name	Contract Number	Site Inspection Date and Time (compulsory)	CIDB Grading	Ward	Closing Date
Installation of borehole for new municipal offices	UMZ/2023-24/INFRA/CAP/023	N/A	2CE	18	19 February 2024

MANDATORY DOCUMENTS TO BE SUBMITTED, FAILURE TO DO SO WILL RESULT IN THE BID BEING DEMEED TO BE NON-RESPONSIVE.

Umzimvubu Local Municipality Supply Chain Management policy will apply. Confirmation from SARS with a verification pin, copy of company Registration/Founding Statement/CIPC Document. The bid will be evaluated on 80/20 where 20 points will be allocated to specific goal, **5 points** for companies with more than 50% youth ownership, **5 points** for companies with more than 50% female ownership and **10 points** for **100% Black ownership**. Original Certified ID Copies of Managing Directors/ Owners. Properly filled and signed MBD forms 4, 6.1, 8 and 9 Billing clearance certificate or statement of municipal accounts or affidavit or proof of residence with declaration that a company does not owe municipal services for more than 90 days are compulsory submission. Bidders must be registered on CSD and provide confirmation of registration. No couriered, faxed, e-mailed and late tenders will be accepted. Certification of documents must be within a period of 90 days. Umzimvubu Local Municipality reserves the right not to **appoint** and value for money will be the key determinant. All tenders must be deposited in the tender box situated at Umzimvubu Local Municipality Offices at Dabula Street Sophia village, Kwa- Bhaca/Mt Frere, to be closed not later than 12h00 noon as per dates on the table above, wherein they will be opened in public. All tenders must be clearly marked "the name of the project listed above" The municipality will not make any award to a person or persons working for the state.

Bid documents will be available on E-tender portal for free to be downloaded and those that need hard copies will be available at Municipal Offices at a fee of R455.00 to cover printing costs.

All technical enquiries may be directed to **Mr. L. Moleko** 039 255 8500 and SCM **Mr. T. Mbukushe** 039 255 8555.

Other enquiries regarding this Bid may be directed to the office of the Municipal Manager: Mr. GPT Nota.

GPT NOTA
MUNICIPAL MANAGER

INSTALLATION OF BOREHOLE FOR NEW MUNICIPAL OFFICES

T1.2 TENDER DATA

INSTALLATION OF BOREHOLE FOR NEW MUNICIPAL OFFICES**T1.2 TENDER DATA**

The Tender Data shall be read with the Standard Conditions of Tender in order to expand on the Tenderer's obligations and the Employer's undertakings in administering the tender process in respect of the project under consideration.

The Tender Data hereafter shall have precedence in the interpretation of any ambiguity or inconsistency between it and the Standard Conditions of Tender.

Each item of Tender Data given below is cross-referenced to the relevant clause in the Standard Conditions of Tender. The Conditions of Tender are the Standard Conditions of Tender as contained in Annex F of the CIDB Standard for Uniformity in Construction Procurement, as printed in Board Notice 94 of 2006 in the Government Gazette No. 29138 of 2006 dated 18 August 2006.

The Standard Conditions of Tender make several references to the Tender Data which specifically applies to this tender. The Tender Data shall have precedence in the interpretation of any ambiguity or inconsistency between it and the Standard Conditions of Tender. Each item of Tender Data given below is cross-referenced to the relevant clause in the Standard Conditions of Tender.

Tender Data Applicable to this Tender

Clause Number	Data / Wording
F.1.2	<p>The Tender Documents consist of the following:</p> <p>(a) This Project Document, which contains the following:</p> <p>PART T1: TENDERING PROCEDURES</p> <p>T1.1 Tender Notice and Invitation to Tender</p> <p>T1.2 Tender Data</p> <p>PART T2: RETURNABLE DOCUMENTS</p> <p>T2.1 List of Returnable Documents</p> <p>T2.2 Returnable Schedules</p> <p>PART C1: AGREEMENTS AND CONTRACT DATA</p> <p>C1.1 Form of Offer and Acceptance</p> <p>C1.2 Contract Data</p> <p>C1.3 Form of Guarantee</p> <p>C1.4 Agreement in terms of Section 37(2) of the Occupational Health and Safety Act No. 85 of 1993</p> <p>C1.5 Transfer of rights</p> <p>PART C2: PRICING DATA</p> <p>C2.1 Pricing Instructions</p> <p>C2.2 Schedule of Quantities</p> <p>PART C3: SCOPE OF WORKS</p> <p>C3.1 Standard Specifications</p> <p>C3.2 Project Specifications</p> <p>C3.3 Particular Specifications</p> <p>PART C4: SITE INFORMATION</p> <p>C4.1 Locality Plan</p> <p>C4.2 Example of Contract Signboard Details</p> <p>C4.3 Drawings</p> <p>(b) Drawings (Attached under Page C 4.3)</p>

INSTALLATION OF BOREHOLE FOR NEW MUNICIPAL OFFICES

Clause Number	Data / Wording
	<p>(c) ‘General Conditions of Contract for Construction Works – New Edition 2015’ issued by the South African Institution of Civil Engineering (abbreviated title ‘General Conditions of Contract 2015’- GCC 2015). This document is obtainable separately and Tenderers shall obtain their own copy.</p> <p>(d) ‘The GUIDELINES FOR HUMAN SETTLEMENT PLANNING AND DESIGN Standard Specifications for Road and Bridge Works for State Road Authorities 1998 edition’. This document is obtainable separately and Tenderers shall obtain their own copy.</p> <p>(e) ‘The Occupational Health and Safety Act No 85 and Amendment Act No 85 of 1993, and the Construction Regulations 2003’ (Government Gazette No 10113 of 07 February 2014, Notice No 37305). This document is obtainable separately and Tenderers shall obtain their own copy.</p> <p>In addition Tenderers are advised, in their own interest, to obtain their own copies of the following Acts, Regulations and Standards referred to in this document as they are essential for the Tenderer to become acquainted with the basics of construction management, the implementation of preferential construction procurement policies, and participation of targeted enterprises and labour:</p> <p>(i) The Construction Industry Development Board Act No. 38 of 2000 as amended and the Regulations in terms of the CIDB Act 38 of 2000, Government Notice No 692 of 9 June 2004.</p>
F.1.4	<p>The Accounting Officer is :</p> <p>Name : Mr G.P.T. Nota Tel: (039) 255 8500 Fax: (039) 255 0167/1893 E-mail: Nota.Tobela@umzimbvubu.gov.za</p>
F.2.1	<p>A Tenderer will not be eligible to submit a tender if:</p> <p>(a) the Contractor submitting the tender is under restrictions or has principals who are under restriction to participate in the Employer’s procurement due to corrupt or fraudulent practices;</p> <p>(b) the Tenderer does not have the legal capacity to enter into the contract;</p> <p>(c) the Contractor submitting the tender is insolvent, in receivership, bankrupt or being wound up, has his affairs administered by a court or a judicial officer, has suspended his business activities, or is subject to legal proceedings in respect of the foregoing;</p> <p>(d) The Tenderer does not comply with the legal requirements stated in the Employer’s procurement policy;</p> <p>e) The Tenderer cannot demonstrate that he possesses the necessary professional and technical qualifications and competence, financial resources, equipment and other physical facilities, managerial capability, personnel, experience and reputation to perform the contract;</p> <p>(f) The Tenderer cannot provide proof that he is in good standing with respect to duties, taxes, levies and contributions required in terms of legislation applicable to the work in the contract.</p>

INSTALLATION OF BOREHOLE FOR NEW MUNICIPAL OFFICES

Clause Number	Data / Wording
	<p>Only Tenderers meeting the Construction Industry Development Board (CIDB) contractor grading designation of 2CE, as defined in the Regulations (01 June 2004 as amended) in terms of the CIDB Act 38 of 2000, are eligible to submit tenders for this contract:</p> <p>In terms of the Umzimvubu Municipality Supply Chain Management Policy Guideline, all suppliers of goods and services to the Umzimvubu Municipality are required to register on the Database.</p> <p>(1) Application forms may be obtained by phoning 039 255 8500</p>
F.2.7	<p>The arrangements and venue for the Clarification Meeting are:</p> <p>Venue: Umzimvubu Municipal offices, Dabula Street, KWABHACA (Mount Frere) Municipal Hall</p> <p>Contact person: Mr. L. Moleko Tel: (039) 255 8500 Fax: (039) 255 0167 Email: Moleko.Lebohang@umzimvubu.gov.za</p> <p>SCM Enquiries : Mr. T Mbukushe Tel: (039) 255 8500 Fax: (039) 255 0167 Email : Mbukushe.Themba@umzimvubu.gov.za</p> <p>ENQUIRIES: All SCM related enquiries can be directed to Mr. T. Mbukushe at: (039) 255 8500 and Technical Enquiries to: Mr. L Moleko Tel: 039 255 8500 Fax: 039 255 0167, other enquiries regarding this Bid may be directed to the office of the Municipal Manager:</p>
F.2.8	Change 'five working days' to 'seven working days'. Working days shall be from Monday to Friday and shall exclude all gazetted public holidays.
F.2.10	All tenderers must be registered for Value Added Tax (VAT) with the South African Revenue Services (SARS).
F.2.12	The requirements are as described in Clause 1212 'ALTERNATIVE DESIGNS AND OFFERS' of 'The GUIDELINES FOR HUMAN SETTLEMENT PLANNING AND DESIGN Standard Specification for Road and Bridge Works for State Road Authorities 1998 edition'.

INSTALLATION OF BOREHOLE FOR NEW MUNICIPAL OFFICES

Clause Number	Data / Wording
F.2.13	<p>F.2.13.3 Tender offers shall be submitted as an original only. Under no circumstances whatsoever may the tender forms be retyped or redrafted. Photocopies of the original tender documentation may be used, but an original signature must appear on such photocopies.</p> <p>F.2.13.5 The Employer's address for delivery of tender offers and identification details to be shown on each tender offer package are:</p> <p>Location of Tender Box: In the Foyer, Umzimvubu Local Municipality</p> <p>Physical Address: Dabula Street, Mount Frere</p> <p>Identification Details: Installation of borehole for new municipal Offices Contract No:UMZ/2023-24/INFRA/CAP/023</p> <p>F.2.13.6 A two-envelope system will <u>not be followed</u>.</p>
F.2.15	<p>The closing time for submission of Tender Offers is: 12h00 ON 19 February 2024</p> <p>Telegraphic, telephonic, telex, facsimile, electronic, e-mailed and late tenders will not be accepted.</p>
F.2.16	The tender offer validity period is 90 days from the closing time for submission of tenders.
F.2.19	Access shall be provided for inspections and testing by personnel acting on behalf of the Employer.
F.2.22	This is not applicable.
F.2.23	The certificates as required in the Returnable Schedules and Forms must be provided with the tender for each party to a consortium / joint venture.
F.3.1	Change 'five working days' to 'seven working days'. Working days shall be from Monday to Friday and shall exclude all gazetted public holidays.
F.3.2	Change 'seven days' to 'five working days'. Working days shall be from Monday to Friday and shall exclude all gazetted public holidays.
F.3.4	<p>The time and location for opening of the tender offers are:</p> <p>Time: 12h00 Date: 19 February 2024</p> <p>Location / Venue: Umzimvubu Local Municipality Reception, Kwabhaca (Mount Frere).</p>
F.3.5	A two-envelope system will <u>not be followed</u> .

INSTALLATION OF BOREHOLE FOR NEW MUNICIPAL OFFICES

T2. RETURNABLE DOCUMENTS

INSTALLATION OF BOREHOLE FOR NEW MUNICIPAL OFFICES**T2.1 LIST OF RETURNABLE DOCUMENTS**

1. This Project Document must be submitted as a whole and shall not be taken apart or altered in any way whatsoever. The following schedules and forms are contained in this document and are to be properly completed as required:
 - a) Returnable Schedules in T2.2.
 - b) C1.1 Form of Offer and Acceptance, A. Offer, on page C3.
 - c) Contract Specific Data Provided by the Contractor in C1.2.2 Part B.
 - d) Pricing Data in C2.2: Schedule of Quantities.

2. VERY IMPORTANT NOTICE ON DISQUALIFICATIONS:

- A bid not complying with the peremptory/mandatory requirements stated hereunder will be regarded as not being an "Acceptable bid", and as such will be rejected.
- "Acceptable bid" means any bid which, in all respects, complies with the conditions of bid and specifications as set out in the bid documents.
- A BID WILL BE REJECTED:
- 2.1. Tax clearance certificate or copy thereof or TCS Pin number (or in the case of a joint venture or consortium, of all the partners in the joint venture or consortium) has not been submitted with the bid document on closing date of the bid. (An expired tax clearance certificate submitted at the closure of the bid will NOT be accepted).
- As per Supply Chain Management Circular No. 1/2013 – recommended bidders that did not submit a valid tax clearance certificate with their bid will be requested in writing to submit their tax clearance certificate within five working days for inclusion in the Bid Evaluation Committee item, if a bidder fails to submit before 12:00 on the 5th working day after the date of request, the relevant bid will be rejected.
- In bids where Consortia and Joint Ventures are involved, each party must submit a separate Tax Clearance Certificate.
- Copies of the TCC 001 "Application for a Tax Clearance Certificate" form are available from any SARS branch office nationally or on the website www.sars.gov.za.
- Applications for the Tax Clearance Certificates may also be made via e-Filing. In order to use this provision, taxpayers will need to register with SARS as e-Filing through the website www.sars.gov.za.
- 2.2. If any of the evaluation criteria pages have been removed from the bid document, and have therefore, not been submitted.
- 2.3.1. In the event of a failure to complete and sign in full the schedule of quantities as required.
- 2.3.2. In the event of there being scratching out, writing over or painting out rates or information, affecting the evaluation of the bid, without initialing next to the amended rates or information, however in cases where the total amount has not been affected the bid will still be acceptable.
- 2.3.3. In the event of the use of correction fluid (e.g. tippex), any erasable ink, or any erasable writing instrument (e.g. pencil)
- 2.3.4. If the Bid has not been properly signed by a person having the authority to do so. (Refer to Declaration)
- 2.3.5. If the bidder attempts to influence, or has in fact influenced the evaluation and/or awarding of the contract.
- 2.3.6. If the bid has been submitted either in the wrong bid box or after the relevant closing date and time.

INSTALLATION OF BOREHOLE FOR NEW MUNICIPAL OFFICES

- 2.3.7.If any municipal rates and taxes or municipal service charges owed by the bidder or any of its directors/members to the municipality or municipal entity, or to any other municipality or municipal entity, are in arrears for more than three months
- 2.3.8.If any bidder who during the last five years has failed to perform satisfactorily on a previous contract with the municipality, municipal entity or any other organ of state after written notice was given to that bidder that performance was unsatisfactory.
- 2.3.9.The accounting officer must ensure that irrespective of the procurement process followed, no award may be given to a person –
 - who is in the service of the state, or;
 - if that person is not a natural person, of which any director, manager, principal shareholder or stakeholder, is a person in the service of the state; or;
 - Who is an advisor or consultant contracted with the municipality in respect of contract that would cause a conflict of interest?
- If the bidder is not registered in the required CIDB contractor grading designation (category) or higher, if required in this bid documentation.
- 3.If the bidder or any of its directors is listed on the Register of Bid Defaulters in terms of the Prevention and Combating of Corrupt Activities Act of 2004 as a person prohibited from doing business with the public sector.
- 4.In the event of non-submission of financial statements if required (SEE BID DATA OR PRICING SCHEDULE). In this regard please note:
- (10.1). If a bidder is a registered company required by law to have its annual financial statements audited or independently reviewed in compliance with the requirements of the Companies Act ,Act No.71 of 2008, or any other law, audited or independently reviewed annual financial statements, as the case may be, prepared within six (6) months of the end of the bidders most recent financial year together with the audited or independently reviewed annual financial statements for the two immediately preceding financial years, unless the bidder was only established within the past three (3) years in which case all of its annual financial statements must be submitted.
- (10.2). If a bidder is a registered close corporation, annual financial statements in compliance with the provisions of the Close Corporations Act, Act No. 69 of 1984, prepared within nine (9) months of the end of the bidders most recent financial year together with the annual financial statements for the two immediately preceding financial years, unless the bidder was only established within the past three (3) years in which case all of its annual financial statements must be submitted.
- (10.3). If the bidder only commenced business within the past three years, the bidder is required to submit annual financial statements in compliance with the provisions of (10.1) and (10.2) above for each of its financial years since commencing business.
- (10.4). If a bidder is not required by law to have its annual financial statements audited or independently reviewed, or is not a Close Corporation, then non-audited annual financial statements for the periods referred to above must be submitted. As per Supply Chain Management Circular No. 1/2013 – recommended bidders that did not submit Annual Financial Statements (if required) with their bid will be requested in writing to submit their Annual Financial Statements within five working days for inclusion in the Bid Evaluation Committee item, if a bidder fails to submit before 12:00 on the 5th working day after the date of request, the relevant bid will be rejected.
- 5.Please check special requirements in scope of work in document for additional attachments
- 6. If the following have not been fully completed and signed:
 - FORM “A” - Declaration of Interest (MBD 4)
 - FORM “B” - Declaration for Procurement above R50 Million (if applicable)
(MBD 6.1)
 - FORM “C” - Declaration of Bidder’s Past SCM Practices (MBD 8)
 - FORM “D” - Certificate of Independent Bid Determination (MB9)
(if applicable)
- 7. As per Supply Chain Management Circular No. 1/2013 – recommended bidders that did not complete and sign all relevant declarations in the bid document will be requested in writing to

INSTALLATION OF BOREHOLE FOR NEW MUNICIPAL OFFICES

complete and sign relevant declarations within five working days for inclusion in the Bid Evaluation Committee item, if a bidder fails to complete and sign before 12:00 on the 5th working day after the date of request, the relevant bid will be rejected.

INSTALLATION OF BOREHOLE FOR NEW MUNICIPAL OFFICES**T2.2 RETURNABLE SCHEDULES**

A	CERTIFICATE OF ATTENDANCE (Not Compulsory).....	T17
B	RECORD OF ADDENDA TO TENDER DOCUMENTS.....	T18
C	COMPULSORY ENTERPRISE QUESTIONNAIRE.....	T19
D	CERTIFICATE OF AUTHORITY.....	T21
E	PLANT AND EQUIPMENT.....	T26
F	EXPERIENCE OF TENDERER.....	T27
G	PROPOSED SUB CONTRACTORS.....	T28
H	KEY PERSONNEL.....	T29
I	DEVIATIONS AND QUALIFICATIONS.....	T30
J	CONTRACTOR'S HEALTH AND SAFETY DECLARATION.....	T31
K	TAX CLEARANCE CERTIFICATE.....	T33
L	PREFERENCING SCHEDULE (FOR CONTRACT PARTICIPATION GOALS).....	T34
MBD 4.....		T35
MBD 6.1.....		T39
MBD 8.....		T44
MBD 9.....		T46

NOTE: The Tenderer is required to complete each and every schedule and form listed above to the best of his ability as the evaluation of tenders and the eventual contract will be based on the information provided by the Tenderer. Failure of a Tenderer to complete the schedules and forms to the satisfaction of the Employer may lead to rejection on the grounds that the tender is not responsive.

INSTALLATION OF BOREHOLE FOR NEW MUNICIPAL OFFICES

A. CERTIFICATE OF ATTENDANCE (Compulsory to be signed as this will be checked on-site inspection attendance register)

This is to certify that (*Tenderer*)

of (*address*)

..... was represented by the person(s) named below at the compulsory clarification meeting held for all tenderers **at the Umzimvubu Local Municipality offices, kwaBhaca (Mount Frere)**

I / We acknowledge that the purpose of the meeting was to acquaint myself / ourselves with the site of the works and / or matters incidental to doing the work specified in the tender documents in order for me / us to take account of everything necessary when compiling our rates and prices included in the tender.

Particulars of person attending the meeting:

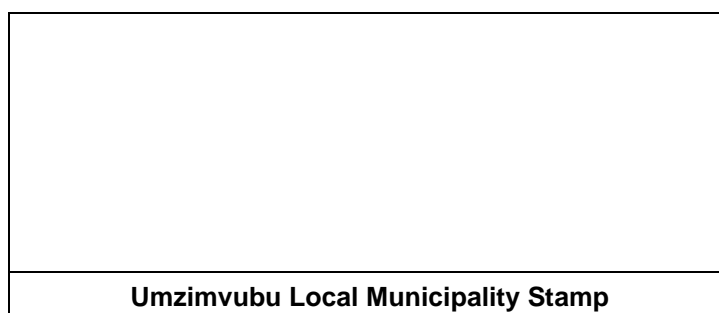
Name: Signature:

Capacity:

Attendance of the above person at the meeting is confirmed by the Employer's agent, namely:

Name: L. Maqalekane Signature:

Capacity: PROJECT MANAGER Date and Time:



INSTALLATION OF BOREHOLE FOR NEW MUNICIPAL OFFICES**B. RECORD OF ADDENDA TO TENDER DOCUMENTS**

I / We confirm that the following communications received from the Employer or his representative before the date of submission of this tender offer, amending the tender documents, have been taken into account in this tender offer and are attached hereto.

ADDENDUM No.	DATE	DESCRIPTION

Please attach all Addenda to this page

SIGNATURE:

DATE:

(Of person authorised to sign on behalf of the Tenderer)

INSTALLATION OF BOREHOLE FOR NEW MUNICIPAL OFFICES

C. COMPULSORY ENTERPRISE QUESTIONNAIRE

The following particulars must be furnished. In the case of a joint venture, **separate** enterprise questionnaires in respect of each partner must be completed and submitted.

Section 1: Name of enterprise:

Section 2: VAT registration number, if any:

Section 3: CIDB registration number, if any:

Section 4: Particulars of sole proprietors and partners in partnerships

Name*	Identity number*	Personal income tax number*

* Complete only if sole proprietor or partnership and attach separate page if more than 3 partners

Section 5: Particulars of companies and close corporations

Company registration number

Close corporation number

Tax reference number

Section 6: Record of service of the state

Indicate by marking the relevant boxes with a cross, if any sole proprietor, partner in a partnership or director, manager, principal shareholder or stakeholder in a company or close corporation is currently serving or has served within the last 12 months as any of the following:

- | | |
|--|---|
| <input type="checkbox"/> a member of any municipal council | <input type="checkbox"/> an employee of any provincial department, national or provincial public entity or constitutional institution within the meaning of the Public Finance Management Act, 1999 (Act 1 of 1999) |
| <input type="checkbox"/> a member of any provincial legislature | <input type="checkbox"/> a member of an accounting authority of any national or provincial public entity |
| <input type="checkbox"/> a member of the National Assembly or the National Council of Province | <input type="checkbox"/> an employee of Parliament or a provincial legislature |
| <input type="checkbox"/> a member of the board of directors of any municipal entity | |
| <input type="checkbox"/> an official of any municipality or municipal entity | |

If any of the above boxes are marked, disclose the following:

Name of sole proprietor, partner, director, manager, principal shareholder or stakeholder	Name of institution, public office, board or organ of state and position held	Status of service (tick appropriate column)	
		current	Within last 12 months

*insert separate page if necessary

INSTALLATION OF BOREHOLE FOR NEW MUNICIPAL OFFICES**Section 7: Record of spouses, children and parents in the service of the state**

Indicate by marking the relevant boxes with a cross, if any spouse, child or parent of a sole proprietor, partner in a partnership or director, manager, principal shareholder or stakeholder in a company or close corporation is currently serving or has served within the last 12 months as any of the following:

- | | |
|--|---|
| <input type="checkbox"/> a member of any municipal council | <input type="checkbox"/> an employee of any provincial department, national or provincial public entity or constitutional institution within the meaning of the Public Finance Management Act, 1999 (Act 1 of 1999) |
| <input type="checkbox"/> a member of any provincial legislature | <input type="checkbox"/> a member of an accounting authority of any national or provincial public entity |
| <input type="checkbox"/> a member of the National Assembly or the National Council of Province | <input type="checkbox"/> an employee of Parliament or a provincial legislature |
| <input type="checkbox"/> a member of the board of directors of any municipal entity | |
| <input type="checkbox"/> an official of any municipality or municipal entity | |

Name of spouse, child or parent	Name of institution, public office, board or organ of state and position held	Status of service (tick appropriate column)	
		current	Within last 12 months

*insert separate page if necessary

The undersigned, who warrants that he/she is duly authorised to do so on behalf of the enterprise:

- i) authorizes the Employer to obtain a tax clearance certificate from the South African Revenue Services that my / our tax matters are in order;
- ii) confirms that neither the name of the enterprise or the name of any partner, manager, director or other person, who wholly or partly exercises, or may exercise, control over the enterprise, appears on the Register of Tender Defaulters established in terms of the Prevention and Combating of Corrupt Activities Act of 2004;
- iii) confirms that no partner, member, director or other person, who wholly or partly exercises, or may exercise, control over the enterprise, has within the last five years been convicted of fraud or corruption;
- iv) confirms that I / we are not associated, linked or involved with any other tendering entities submitting tender offers and have no other relationship with any of the tenderers or those responsible for compiling the scope of work that could cause or be interpreted as a conflict of interest;
- v) confirms that the contents of this questionnaire are within my personal knowledge and are to the best of my belief both true and correct.

Signed _____ Date _____

Name _____ Position _____

Enterprise name _____

INSTALLATION OF BOREHOLE FOR NEW MUNICIPAL OFFICES**D. CERTIFICATE OF AUTHORITY**

The tenderer must indicate the enterprise status by ticking the appropriate box hereunder.

(I) SOLE PROPRIETOR	(II) CLOSE CORPORATION	(III) PARTNERSHIP	(IV) COMPANY	(V) JOINT VENTURE

The tenderer must complete the relevant certificate/s set out hereafter or must provide a certificate authorising the signatory on behalf of the enterprise(s).

(I) CERTIFICATE FOR SOLE PROPRIETOR

I....., hereby confirm that I am the sole owner of the

business trading as:.....

Specimen Signature of Sole Owner:

Date:

In the case of a Joint Venture, this certificate must be completed by all Joint Venture partners that are Sole Proprietorships.

INSTALLATION OF BOREHOLE FOR NEW MUNICIPAL OFFICES

(II) CERTIFICATE FOR CLOSE CORPORATION

I / We, the undersigned, being the key members in the business trading as.....
 hereby authorise Mr/Ms, acting in the
 capacity of, to sign all documents in connection with the tender
 for Contract No. and any contract resulting from it on our behalf.

Signatures of Members:

NAME	ADDRESS	SIGNATURE	DATE

Note: *This certificate is to be completed and signed by all of the key members upon whom rests the direction of the affairs of the Close Corporation as a whole.*

Specimen Signature of Signatory:

Date:

In the case of a Joint Venture, this certificate must be completed by all Joint Venture partners that are Close Corporations.

INSTALLATION OF BOREHOLE FOR NEW MUNICIPAL OFFICES

(III) CERTIFICATE FOR PARTNERSHIP

We, the undersigned, being the key partners in the business trading as

.....

hereby authorise Mr/Ms ,

acting in the capacity of , to sign all documents in connection with the

tender for Contract No. and any contract resulting from it on

our behalf.

NAME	ADDRESS	SIGNATURE	DATE

Note: *This certificate is to be completed and signed by all of the key partners upon whom rests the direction of the affairs of the Partnership as a whole.*

Specimen Signature of Signatory:

Date:

In the case of a Joint Venture, this certificate must be completed by all Joint Venture partners that are Partnerships.

INSTALLATION OF BOREHOLE FOR NEW MUNICIPAL OFFICES
(IV) CERTIFICATE FOR COMPANY

I, chairperson of the Board of Directors

of, hereby confirm that by resolution of the Board

(copy attached) taken on 20.....,

Mr/Ms, acting in the capacity of

....., was authorised to sign all documents in connection with this tender and any contract resulting from it on behalf of the company.

Signature of Chairman:

Specimen Signature of Signatory:

Date:

In the case of a Joint Venture, this certificate must be completed by all Joint Venture partners that are companies.

INSTALLATION OF BOREHOLE FOR NEW MUNICIPAL OFFICES

(V) CERTIFICATE FOR JOINT VENTURE

We, the undersigned, are submitting this tender offer in Joint Venture and hereby authorize

Mr/Ms,

authorized signatory of the company

acting in the capacity of Lead Partner, to sign all documents in connection with the tender offer for,

Contract No. and any contract resulting from it on our behalf. This

authorisation is evidenced by the attached power of attorney signed by legally authorised signatories of

all the partners to the Joint Venture.

NAME OF FIRM	ADDRESS	AUTHORISING SIGNATURE, NAME AND CAPACITY

Note: *This certificate is to be completed and signed by all of the key partners upon whom rests the direction of the affairs of the Joint Venture as a whole.*

Specimen Signature of Signatory:

Date:

INSTALLATION OF BOREHOLE FOR NEW MUNICIPAL OFFICES**E. PLANT AND EQUIPMENT**

Note: Each partner to a Joint Venture is to provide the information required below with respect to his company's contribution to the plant and equipment resourcing of the Joint Venture.

The following are lists of major items of relevant equipment that I / we presently own or lease and will be available for this contract if my / our tender is accepted.

- (a) **Details of major Plant and Equipment that is owned by me / us and is immediately available for this contract:**

DESCRIPTION (<i>type, size, capacity, etc.</i>)	QUANTITY	YEAR OF MANUFACTURE

Attach additional pages if more space is required

- (b) **Details of major Plant and Equipment that will be hired or acquired for this contract if my/ our tender is accepted:**

DESCRIPTION (<i>type, size, capacity, etc.</i>)	QUANTITY	HOW ACQUIRED	
		HIRE/ BUY	SOURCE

Attach additional pages if more space is required

The Tenderer undertakes to bring onto site without additional cost to the Employer any additional plant not listed but which may be necessary to complete the contract within the specified contract period.

SIGNATURE:

DATE:

(of person authorised to sign on behalf of the Tenderer)

F. EXPERIENCE OF TENDERER

2. Work of similar nature shall be deemed to mean Installation of borehole for new municipal offices

[illegible]

(of person authorised to sign on behalf of the Tenderer)

G. PROPOSED SUBCONTRACTORS

Acceptance of this tender shall not be construed as approval of all or any of the listed subcontractors. Should any of or all of the subcontractors not be approved subsequent to the acceptance of the tender, it shall in no way invalidate this tender, and the tendered unit rates for the various items of work shall remain final and binding, even in the event of a subcontractor not listed below being approved by the Employer.

[illegible]

SIGNATURE:

DATE:

INSTALLATION OF BOREHOLE FOR NEW MUNICIPAL OFFICES**H. KEY PERSONNEL**

The Tenderer must insert in the spaces provided below a list of the key personnel in the Joint Venture to be employed in the construction of the Works together with a resumé of their experience with particular reference to the construction of similar Works.

The Tenderer shall attach the curriculum vitae of the listed key personnel to the next page.

(The compiler to indicate the designations that will be required for the project)

DESIGNATION	NAMES	PROJECT TYPE	VALUE OF WORK	YEAR COMPLETED
Site Agent	Name: Qualification.:			
Site Foreman	Name: Years' Experience:			
Other Specify:	Name: Years' Experience:			
Other Specify:	Name: Years' Experience:			

Attach additional pages if more space is required

SIGNATURE:

DATE:

(of person authorised to sign on behalf of the Tenderer)

INSTALLATION OF BOREHOLE FOR NEW MUNICIPAL OFFICES
I. DEVIATIONS AND QUALIFICATIONS

Should the Tenderer wish to make any deviation from or any qualification to the Special Conditions of Contract, Specifications, Schedule of Quantities, or Drawings, or should he wish to qualify the tender in any way, he shall indicate the proposals clearly hereunder or alternatively on photocopies of the original tender documentation which shall be attached to this page.

SECTION	PAGE	DEVIATION OR QUALIFICATION, INCLUDING REFERENCE CLAUSE OR ITEM NUMBER

Attach additional pages if more space is required

SIGNATURE:

DATE:

(of person authorised to sign on behalf of the Tenderer)

INSTALLATION OF BOREHOLE FOR NEW MUNICIPAL OFFICES**J. CONTRACTOR'S HEALTH AND SAFETY DECLARATION**

In terms of Clause 4(4) of the OHSA 1993 Construction Regulations 2003 (referred to as "the Regulations" hereafter), a Contractor may only be appointed to perform construction work if the Employer is satisfied that the Contractor has the necessary competencies and resources to carry out the work safely in accordance with the Occupational Health and Safety Act No 85 of 1993 and the OHSA 1993 Construction Regulations 2003.

To that effect a person duly authorised by the tenderer must complete and sign the declaration hereafter in detail.

Declaration by Tenderer

1. I the undersigned hereby declare and confirm that I am fully conversant with the Occupational Health and Safety Act No 85 of 1993 (as amended by the Occupational Health and Safety Amendment Act No 181 of 1993), and the OHSA 1993 Construction Regulations 2003.
2. I hereby declare that my company has the competence and the necessary resources to safely carry out the construction work under this contract in compliance with the Construction Regulations and the Employer's Health and Safety Specifications.
3. I propose to achieve compliance with the Regulations by one of the following:
 - (a) From my own competent resources as detailed in 4(a) hereafter: ***Yes / No**
 - (b) From my own resources still to be appointed or trained until competency is achieved, as detailed in 4(b) hereafter: ***Yes / No**
 - (c) From outside sources by appointment of competent specialist subcontractors as detailed in 4(c) hereafter: ***Yes / No**

(* = delete whatever is not applicable)

4. Details of resources I propose:

(Note: Competent resources shall include safety personnel such as a construction supervisor and construction safety officer as defined in Regulation 6, and competent persons as defined in the OHSA 1993 Construction Regulations 2003, as applicable to this contract)

- (a) Details of the competent and qualified key persons from my company's own resources, who will form part of the contract team:

NAMES OF COMPETENT PERSONS	POSITIONS TO BE FILLED BY COMPETENT PERSONS

INSTALLATION OF BOREHOLE FOR NEW MUNICIPAL OFFICES

(b) Details of training of persons from my company's own resources (or to be hired) who still have to be trained to achieve the necessary competency:

(i) By whom will training be provided?

(ii) When will training be undertaken?

(iii) List the positions to be filled by persons to be trained or hired:

.....

.....

(c) Details of competent resources to be appointed as subcontractors if competent persons cannot be supplied from own company:

Name of proposed subcontractor:

Qualifications or details of competency of the subcontractor:

.....

.....

5. I hereby undertake, if my tender is accepted, to provide, before commencement of the works under the contract, a suitable and sufficiently documented Health and Safety Plan in accordance with Regulation 5(1) of the Construction Regulations, which plan shall be subject to approval by the Employer.

6. I confirm that copies of my company's approved Health and Safety Plan, the Employer's Safety Specifications as well as the OHSA 1993 Construction Regulations 2003 will be provided on site and will at all times be available for inspection by the Contractor's personnel, the Employer's personnel, the Engineer, visitors, and officials and inspectors of the Department of Labour.

7. I hereby confirm that adequate provision has been made in my tendered rates and prices in the schedule of quantities to cover the cost of all resources, actions, training and all health and safety measures envisaged in the OHSA 1993 Construction Regulations 2003, and that I will be liable for any penalties that may be applied in terms of the said Regulations (Regulation 30) for failure on the Contractor's part to comply with the provisions of the Act and the Regulations.

8. I agree that my failure to complete and execute this declaration to the satisfaction of the Employer will mean that I am unable to comply with the requirements of the OHSA 1993 Construction Regulations 2003, and accept that my tender will be prejudiced and may be rejected at the discretion of the Employer.

SIGNATURE:

DATE:

(of person authorised to sign on behalf of the Tenderer)

INSTALLATION OF BOREHOLE FOR NEW MUNICIPAL OFFICES

K. TAX CLEARANCE CERTIFICATE

The tenderer is to attach an original Tax Clearance Certificate issued by the South African Revenue Services (SARS) to this page.

Failure to submit original and valid Tax Clearance Certificates may invalidate the tender.

INSTALLATION OF BOREHOLE FOR NEW MUNICIPAL OFFICES
L. PREFERENCING SCHEDULE (DIRECT PREFERENCES)

PREFERENCE POINTS CLAIM FORM IN TERMS OF THE PREFERENTIAL PROCUREMENT REGULATIONS 2017 & THE CONTRACT FORM – RENDERING OF SERVICES.

MBD 4	T35
MBD 6.1	T38
MBD 8	T44
MBD 9	T46

INSTALLATION OF BOREHOLE FOR NEW MUNICIPAL OFFICES

MBD 4

DECLARATION OF INTEREST

1. No bid will be accepted from persons in the service of the state¹.
2. Any person, having a kinship with persons in the service of the state, including a blood relationship, may make an offer or offers in terms of this invitation to bid. In view of possible allegations of favoritism, should the resulting bid, or part thereof, be awarded to persons connected with or related to persons in service of the state, it is required that the bidder or their authorized representative declare their position in relation to the evaluating/adjudicating authority.
- 3 **In order to give effect to the above, the following questionnaire must be completed and submitted with the bid.**

3.1 Full Name of bidder or his or her representative:

3.2 Identity Number:

3.3 Position occupied in the Company (director, trustee, shareholder²):

3.4 Company Registration Number:

3.5 Tax Reference Number:

3.6 VAT Registration Number:

3.7 The names of all directors / trustees / shareholders members, their individual identity numbers and state employee numbers must be indicated in paragraph 4 below.

3.8 Are you presently in the service of the state?

YES / NO

3.8.1 If yes, furnish particulars.....

.....

¹MSCM Regulations: "in the service of the state" means to be –

- (a) a member of –
 - (i) any municipal council;
 - (ii) any provincial legislature; or
 - (iii) the national Assembly or the national Council of provinces;
- (b) a member of the board of directors of any municipal entity;
- (c) an official of any municipality or municipal entity;
- (d) an employee of any national or provincial department, national or provincial public entity or constitutional institution within the meaning of the Public Finance Management Act, 1999 (Act No.1 of 1999);
- (e) a member of the accounting authority of any national or provincial public entity; or
- (f) An employee of Parliament or a provincial legislature.

² Shareholder" means a person who owns shares in the company and is actively involved in the management of the company or business and exercises control over the company.

INSTALLATION OF BOREHOLE FOR NEW MUNICIPAL OFFICES

3.9 Have you been in the service of the state for the past twelve months? ... **YES / NO**

3.9.1 If yes, furnish particulars.....

.....

3.10 Do you have any relationship (family, friend, other) with persons in the service of the state and who may be involved with the evaluation and or adjudication of this bid? **YES / NO**

3.10.1 If yes, furnish particulars.

.....

.....

3.11 Are you, aware of any relationship (family, friend, other) between any other bidder and any persons in the service of the state who may be involved with the evaluation and or adjudication of this bid? **YES / NO**

3.11.1 If yes, furnish particulars

.....

.....

3.12 Are any of the company's directors, trustees, managers, Principle shareholders or stakeholders in service of the state? **YES / NO**

3.12.1 If yes, furnish particulars.

.....

.....

3.13 Are any spouse, child or parent of the company's director's trustees, managers, Principle shareholders or stakeholders in service of the state? **YES / NO**

3.13.1 If yes, furnish particulars.

.....

.....

3.14 Do you or any of the directors, trustees, managers, Principle shareholders or stakeholders of this company Have any interest in any other related companies or Business whether or not they are bidding for this contract. **YES / NO**

3.14.1 If yes, furnish particulars:

.....

.....

INSTALLATION OF BOREHOLE FOR NEW MUNICIPAL OFFICES

4. Full details of directors / trustees / members / shareholders.

Full Name	Identity Number	State Employee Number

.....
Signature

.....
Date

.....
Capacity

.....
Name of Bidder

INSTALLATION OF BOREHOLE FOR NEW MUNICIPAL OFFICES

MBD 6.1

PREFERENCE POINTS CLAIM FORM IN TERMS OF THE PREFERENTIAL PROCUREMENT REGULATIONS 2022

This preference form must form part of all bids invited. It contains general information and serves as a claim form for preference points for specific goals.

NB: BEFORE COMPLETING THIS FORM, TENDERERS MUST STUDY THE GENERAL CONDITIONS, DEFINITIONS AND DIRECTIVES APPLICABLE IN RESPECT OF TENDER AND PREFERENTIAL PROCUREMENT REGULATIONS, 2022.

1. GENERAL CONDITIONS

1.1 The following preference point systems are applicable to all bids:

- the 80/20 system for requirements with a Rand value of up to R50 000 000 (all applicable taxes included); and
- the 90/10 system for requirements with a Rand value above R50 000 000 (all applicable taxes included).

1.2 **To be completed by the organ of state**

The applicable preference point system for this tender is the 80/20 preference point system.

1.3 Points for this tender (even in the case of a tender for income-generating contracts) shall be awarded for:

- (a) Price; and
- (b) Specific Goals.

1.4 **To be completed by the organ of state**

The maximum points for this tender are allocated as follows:

	POINTS
PRICE	80
SPECIFIC GOALS	20
Total points for Price and SPECIFIC GOALS	100

1.5 Failure on the part of a tenderer to submit proof or documentation required in terms of this tender to claim points for specific goals with the tender, will be interpreted to mean that preference points for specific goals are not claimed.

1.6 The organ of state reserves the right to require of a tenderer, either before a tender is adjudicated or at any time subsequently, to substantiate any claim in regard to preferences, in any manner required by the organ of state.

2. DEFINITIONS

- (a) **“tender”** means a written offer in the form determined by an organ of state in response to an invitation to provide goods or services through price quotations, competitive tendering process or any other method envisaged in legislation;
- (b) **“price”** means an amount of money tendered for goods or services, and includes

INSTALLATION OF BOREHOLE FOR NEW MUNICIPAL OFFICES

all applicable taxes less all unconditional discounts;

- (c) **“rand value”** means the total estimated value of a contract in Rand, calculated at the time of bid invitation, and includes all applicable taxes;
- (d) **“tender for income-generating contracts”** means a written offer in the form determined by an organ of state in response to an invitation for the origination of income-generating contracts through any method envisaged in legislation that will result in a legal agreement between the organ of state and a third party that produces revenue for the organ of state, and includes, but is not limited to, leasing and disposal of assets and concession contracts, excluding direct sales and disposal of assets through public auctions; and
- (e) **“the Act”** means the Preferential Procurement Policy Framework Act, 2000 (Act No. 5 of 2000).

3. FORMULAE FOR PROCUREMENT OF GOODS AND SERVICES

3.1 POINTS AWARDED FOR THE PRICE

3.1.1 THE 80/20 OR 90/10 PREFERENCE POINT SYSTEMS

A maximum of 80 or 90 points is allocated for price on the following basis:

80/20

or

90/10

$$P_S = 80 \left(1 - \frac{Pt - P_{min}}{P_{min}} \right) \quad \text{or} \quad P_S = 90 \left(1 - \frac{Pt - P_{min}}{P_{min}} \right)$$

Where

Ps = Points scored for price of tender under consideration

Pt = Price of tender under consideration

P_{min} = Price of lowest acceptable tender

3.2. FORMULAE FOR DISPOSAL OR LEASING OF STATE ASSETS AND INCOME GENERATING PROCUREMENT

3.2.1 POINTS AWARDED FOR THE PRICE

A maximum of 80 or 90 points is allocated for price on the following basis:

80/20

or

90/10

$$P_s = 80 \left(1 - \frac{P_t - P_{max}}{P_{max}} \right) \quad \text{or} \quad P_s = 90 \left(1 - \frac{P_t - P_{max}}{P_{max}} \right)$$

Where

Ps = Points scored for price of tender under consideration

Pt = Price of tender under consideration

P_{max} = Highest acceptable tender

4. POINTS AWARDED FOR SPECIFIC GOALS

- 4.1 In terms of Regulation 4(2); 5(2); 6(2) and 7(2) of the Preferential Procurement Regulations, preference points must be awarded for specific goals stated in the tender. For the purposes of this tender the tenderer will be allocated points based on the goals stated in table 1 below as may be supported by proof/ documentation stated in the conditions of this tender:
- 4.2 In cases where organs of state intend to use Regulation 3(2) of the Regulations, which states that, if it is unclear whether the 80/20 or 90/10 preference point system applies, an organ of state must, in the tender documents, stipulate in the case of—
 - 4.2.1 an invitation for tender for income-generating contracts, that either the 80/20 or 90/10 preference point system will apply and that the highest acceptable tender will be used to determine the applicable preference point system; or

INSTALLATION OF BOREHOLE FOR NEW MUNICIPAL OFFICES

4.2.2 any other invitation for tender, that either the 80/20 or 90/10 preference point system will apply and that the lowest acceptable tender will be used to determine the applicable preference point system,

then the organ of state must indicate the points allocated for specific goals for both the 90/10 and 80/20 preference point system.

Table 1: Specific goals for the tender and points claimed are indicated per the table below.

(Note to organs of state: Where either the 90/10 or 80/20 preference point system is applicable, corresponding points must also be indicated as such.)

Note to tenderers: The tenderer must indicate how they claim points for each preference point system.)

The specific goals allocated points in terms of this tender	Number of points allocated (90/10 system) (To be completed by the organ of state)	Number of points allocated (80/20 system) (To be completed by the organ of state)	Number of points claimed (90/10 system) (To be completed by the tenderer)	Number of points claimed (80/20 system) (To be completed by the tenderer)
100% Black Owned		10		
More than 50% female ownership		5		
More than 50% youth ownership		5		

DECLARATION WITH REGARD TO COMPANY/FIRM

4.3 Name of company/firm.....

4.4 Company registration number:

4.5 TYPE OF COMPANY/ FIRM

- 4.5.1 Partnership/Joint Venture / Consortium
- 4.5.2 One-person business/sole propriety
- 4.5.3 Close corporation
- 4.5.4 Public Company
- 4.5.5 Personal Liability Company
- 4.5.6 (Pty) Limited
- 4.5.7 Non-Profit Company

INSTALLATION OF BOREHOLE FOR NEW MUNICIPAL OFFICES

4.5.8 State Owned Company
[TICK APPLICABLE BOX]

- 4.6 I, the undersigned, who is duly authorised to do so on behalf of the company/firm, certify that the points claimed, based on the specific goals as advised in the tender, qualifies the company/ firm for the preference(s) shown and I acknowledge that:
- i. The information furnished is true and correct;
 - ii. The preference points claimed are in accordance with the General Conditions as indicated in paragraph 1 of this form.
 - iii. In the event of a contract being awarded as a result of points claimed as shown in paragraphs 1.4 and 4.2, the contractor may be required to furnish documentary proof to the satisfaction of the organ of state that the claims are correct.
 - iv. If the specific goals have been claimed or obtained on a fraudulent basis or any of the conditions of contract have not been fulfilled, the organ of state may, in addition to any other remedy it may have –
 - (a) Disqualify the person from the tendering process
 - (b) Recover costs losses or damages it has incurred or suffered as a result of that person’s conduct
 - (c) cancel the contract and claim any damages which it has suffered as a result of having to make less favourable arrangements due to such cancellation
 - (d) Recommend that the tenderer or contractor, its shareholders and directors, or only the shareholders and directors who acted on a fraudulent basis, be restricted from obtaining business from any organ of state for a period not exceeding 10 years, after the audi alteram partem (hear the other side) rule has been applied; and
 - (e) Forward the matter for criminal prosecution,if deemed necessary

.....

SIGNATURE(S) OF TENDERER(S)

SURNAME AND NAME:

DATE:

ADDRESS:

.....

.....

.....

INSTALLATION OF BOREHOLE FOR NEW MUNICIPAL OFFICES

INSTALLATION OF BOREHOLE FOR NEW MUNICIPAL OFFICES

MBD 8

DECLARATION OF BIDDER'S PAST SUPPLY CHAIN MANAGEMENT PRACTICES

- 1 This Municipal Bidding Document must form part of all bids invited.
- 2 It serves as a declaration to be used by municipalities and municipal entities in ensuring that when goods and services are being procured, all reasonable steps are taken to combat the abuse of the supply chain management system.
- 3 The bid of any bidder may be rejected if that bidder, or any of its directors have:
 - a. abused the municipality's / municipal entity's supply chain management system or committed any improper conduct in relation to such system;
 - b. been convicted for fraud or corruption during the past five years;
 - c. willfully neglected, reneged on or failed to comply with any government, municipal or other public sector contract during the past five years; or
 - d. Been listed in the Register for Tender Defaulters in terms of section 29 of the Prevention and Combating of Corrupt Activities Act (No 12 of 2004).
- 4 **In order to give effect to the above, the following questionnaire must be completed and submitted with the bid.**

Item	Question	Yes	No
4.1	Is the bidder or any of its directors listed on the National Treasury's Database of Restricted Suppliers as companies or persons prohibited from doing business with the public sector? (Companies or persons who are listed on this Database were informed in writing of this restriction by the Accounting Officer/Authority of the institution that imposed the restriction after the <i>audi alteram partem</i> rule was applied). The Database of Restricted Suppliers now resides on the National Treasury's website (www.treasury.gov.za) and can be accessed by clicking on its link at the bottom of the home page.	Yes <input type="checkbox"/>	No <input type="checkbox"/>
4.1.1	If so, furnish particulars:		
4.2	Is the bidder or any of its directors listed on the Register for Tender Defaulters in terms of section 29 of the Prevention and Combating of Corrupt Activities Act (No 12 of 2004)? The Register for Tender Defaulters can be accessed on the National Treasury's website (www.treasury.gov.za) by clicking on its link at the bottom of the home page.	Yes <input type="checkbox"/>	No <input type="checkbox"/>
4.2.1	If so, furnish particulars:		

INSTALLATION OF BOREHOLE FOR NEW MUNICIPAL OFFICES

4.3	Was the bidder or any of its directors convicted by a court of law (including a court of law outside the Republic of South Africa) for fraud or corruption during the past five years?	<input type="checkbox"/> Yes	<input type="checkbox"/> No
4.3.1	If so, furnish particulars:		
Item	Question	Yes	No
4.4	Does the bidder or any of its directors owe any municipal rates and taxes or municipal charges to the municipality / municipal entity, or to any other municipality / municipal entity, that is in arrears for more than three months?	<input type="checkbox"/> Yes	<input type="checkbox"/> No
4.4.1	If so, furnish particulars:		
4.5	Was any contract between the bidder and the municipality / municipal entity or any other organ of state terminated during the past five years on account of failure to perform on or comply with the contract?	<input type="checkbox"/> Yes	<input type="checkbox"/> No
4.7.1	If so, furnish particulars:		

CERTIFICATION

I, THE UNDERSIGNED (FULL NAME)
CERTIFY THAT THE INFORMATION FURNISHED ON
THIS DECLARATION FORM TRUE AND CORRECT.

I ACCEPT THAT, IN ADDITION TO CANCELLATION OF A CONTRACT,
ACTION MAY BE TAKEN AGAINST ME SHOULD THIS DECLARATION PROVE
TO BE FALSE.

.....
Signature

.....
Date

.....
Position

.....
Name of Bidder

INSTALLATION OF BOREHOLE FOR NEW MUNICIPAL OFFICES

MBD 9

CERTIFICATE OF INDEPENDENT BID DETERMINATION

- 1 This Municipal Bidding Document (MBD) must form part of all bids¹ invited.
- 2 Section 4 (1) (b) (iii) of the Competition Act No. 89 of 1998, as amended, prohibits an agreement between, or concerted practice by, firms, or a decision by an association of firms, if it is between parties in a horizontal relationship and if it involves collusive bidding (or bid rigging).² Collusive bidding is a *pe se* prohibition meaning that it cannot be justified under any grounds.
- 3 Municipal Supply Regulation 38 (1) prescribes that a supply chain management policy must provide measures for the combating of abuse of the supply chain management system, and must enable the accounting officer, among others, to:
 - a. take all reasonable steps to prevent such abuse;
 - b. reject the bid of any bidder if that bidder or any of its directors has abused the supply chain management system of the municipality or municipal entity or has committed any improper conduct in relation to such system; and
 - c. cancel a contract awarded to a person if the person committed any corrupt or fraudulent act during the bidding process or the execution of the contract.
- 4 This MBD serves as a certificate of declaration that would be used by institutions to ensure that, when bids are considered, reasonable steps are taken to prevent any form of bid-rigging.
- 5 In order to give effect to the above, the attached Certificate of Bid Determination (MBD 9) must be completed and submitted with the bid:

¹ Includes price quotations, advertised competitive bids, limited bids and proposals.

² Bid rigging (or collusive bidding) occurs when businesses, that would otherwise be expected to compete, secretly conspire to raise prices or lower the quality of goods and / or services for purchasers who wish to acquire goods and / or services through a bidding process. Bid rigging is, therefore, an agreement between competitors not to compete.

INSTALLATION OF BOREHOLE FOR NEW MUNICIPAL OFFICES

MBD 9

CERTIFICATE OF INDEPENDENT BID DETERMINATION

I, the undersigned, in submitting the accompanying bid:

(Bid Number and Description)

in response to the invitation for the bid made by

(Name of Municipality / Municipal Entity)

do hereby make the following statements that I certify to be true and complete in every respect

I certify, on behalf of

that:

(Name of Bidder)

1. I have read and I understand the contents of this Certificate;
2. I understand that the accompanying bid will be disqualified if this Certificate is found not to be true and complete in every respect;
3. I am authorized by the bidder to sign this Certificate, and to submit the accompanying bid, on behalf of the bidder;
4. Each person whose signature appears on the accompanying bid has been authorized by the bidder to determine the terms of, and to sign, the bid, on behalf of the bidder;
5. For the purposes of this Certificate and the accompanying bid, I understand that the word "competitor" shall include any individual or organization, other than the bidder, whether or not affiliated with the bidder, who:
 - (a) has been requested to submit a bid in response to this bid invitation;
 - (b) could potentially submit a bid in response to this bid invitation, based on their qualifications, abilities or experience; and
 - (c) provides the same goods and services as the bidder and/or is in the same line of business as the bidder

INSTALLATION OF BOREHOLE FOR NEW MUNICIPAL OFFICES**MBD 9**

6. The bidder has arrived at the accompanying bid independently from, and without consultation, communication, agreement or arrangement with any competitor. However communication between partners in a joint venture or consortium³ will not be construed as collusive bidding.
7. In particular, without limiting the generality of paragraphs 6 above, there has been no consultation, communication, agreement or arrangement with any competitor regarding:
- (a) prices;
 - (b) geographical area where product or service will be rendered (market allocation)
 - (c) methods, factors or formulas used to calculate prices;
 - (d) the intention or decision to submit or not to submit, a bid;
 - (e) the submission of a bid which does not meet the specifications and conditions of the bid; or
 - (f) bidding with the intention not to win the bid.
8. In addition, there have been no consultations, communications, agreements or arrangements with any competitor regarding the quality, quantity, specifications and conditions or delivery particulars of the products or services to which this bid invitation relates.
9. The terms of the accompanying bid have not been, and will not be, disclosed by the bidder, directly or indirectly, to any competitor, prior to the date and time of the official bid opening or of the awarding of the contract.

³ Joint venture or Consortium means an association of persons for the purpose of combining their expertise, property, capital, efforts, skill and knowledge in an activity for the execution of a contract.

INSTALLATION OF BOREHOLE FOR NEW MUNICIPAL OFFICES

MBD 9

10. I am aware that, in addition and without prejudice to any other remedy provided to combat any restrictive practices related to bids and contracts, bids that are suspicious will be reported to the Competition Commission for investigation and possible imposition of administrative penalties in terms of section 59 of the Competition Act No 89 of 1998 and or may be reported to the National Prosecuting Authority (NPA) for criminal investigation and or may be restricted from conducting business with the public sector for a period not exceeding ten (10) years in terms of the Prevention and Combating of Corrupt Activities Act No 12 of 2004 or any other applicable legislation

.....

Signature

.....

Date

.....

Position

.....

Name of Bidder

C1: AGREEMENTS AND CONTRACT DATA

C2: PRICING DATA

C3: SCOPE OF WORK

C4: SITE INFORMATION

CONTRACT

TABLE OF CONTENTS	Page	Colour
C1: AGREEMENTS AND CONTRACT DATA		
C1.1: FORM OF OFFER AND ACCEPTANCE	C3	Green
C1.2: CONTRACT DATA	C7	Green
C1.2.1: CONDITIONS OF CONTRACT	C8	Green
C1.2.2: PART A: DATA PROVIDED BY THE EMPLOYER	C9	Green
PART B: DATA PROVIDED BY THE CONTRACTOR	C11	Green
C1.3: FORM OF GUARANTEE	C12	Green
C1.4: AGREEMENT IN TERMS OF SECTION 37(2) OF THE OCCUPATIONAL HEALTH AND SAFETY ACT No 85 OF 1993	C14	White
C2: PRICING DATA		
C2.1: PRICING INSTRUCTIONS	C16	Yellow
C2.2: SCHEDULE OF QUANTITIES	C20	Yellow
C3: SCOPE OF WORK		
TABLE OF CONTENTS	C22	Pink
C3.1: STANDARD SPECIFICATIONS	C23	Pink
C3.2: PROJECT SPECIFICATIONS	C23	Pink
C3.3: PARTICULAR SPECIFICATIONS	C43-C59	Pink
C 4: SITE INFORMATION		
TABLE OF CONTENTS	C59	Pink
C4.1: LOCALITY PLANS	C61	White
C4.2: EXAMPLE OF CONTRACT SIGNBOARD DETAILS	C62	White
C4.3: DRAWINGS	C63	White

C1: AGREEMENTS AND CONTRACT DATA

C1.1 FORM OF OFFER AND ACCEPTANCE

A. OFFER

The Employer, identified in the Acceptance signature block, has solicited offers to enter into a contract in respect of the following works:

Bid

Description.....

Bid

number.....

The Tenderer, identified in the Offer signature block below, has examined the documents listed in the Tender Data and addenda thereto as listed in the Tender Schedules, and by submitting this Offer has accepted the Conditions of Tender.

By the representative of the Tenderer, deemed to be duly authorised, signing this part of this Form of Offer and Acceptance, the Tenderer offers to perform all of the obligations and liabilities of the Contractor under the Contract including compliance with all its terms and conditions according to their true intent and meaning for an amount to be determined in accordance with the Conditions of Contract identified in the Contract Data.

The offered total of the prices inclusive of Value Added Tax is:

Amount in Words.....

.....

.....

R..... (in figures)

This Offer may be accepted by the Employer by signing the Acceptance part of this Form of Offer and Acceptance and returning one copy of this document to the Tenderer before the end of the period of validity stated in the Tender Data, whereupon the Tenderer becomes the party named as the Contractor in the Conditions of Contract identified in the Contract Data.

Signature: (of person authorised to sign the tender):

Name: (of signatory in capitals):

Capacity: (of Signatory):

Name of Tenderer: (organisation):

Address:

.....

Telephone number: Email:

Witness:

Signature:

Name: (in capitals):

Date:

[Failure of a Tenderer to sign this form will invalidate the tender]

B. ACCEPTANCE

By signing this part of the Form of Offer and Acceptance, the Employer identified below accepts the Tenderer's Offer. In consideration thereof, the Employer shall pay the Contractor the amount due in accordance with the Conditions of Contract identified in the Contract Data. Acceptance of the Tenderer's Offer shall form an agreement between the Employer and the Tenderer upon the terms and conditions contained in this Agreement and in the Contract that is the subject of this Agreement.

The terms of the contract are contained in

- Part 1 Agreements and Contract Data (which includes this Agreement)
- Part 2 Pricing Data, including the Schedule of Quantities
- Part 3 Scope of Work
- Part 4 Site Information

and the schedules, forms, drawings and documents or parts thereof, which may be incorporated by reference into Parts 1 to 4 above.

Deviations from and amendments to the documents listed in the Tender Data and any addenda thereto listed in the Tender Schedules as well as any changes to the terms of the Offer agreed by the Tenderer and the Employer during this process of offer and acceptance, are contained in the Schedule of Deviations attached to and forming part of this Agreement. No amendments to or deviations from said documents are valid unless contained in this Schedule, which must be duly signed by the authorised representatives of both parties.

The Tenderer shall deliver the Guarantee in terms of Clause 7 of the General Conditions of Contract 2015 within the period stated in the Contract Data, and he shall, immediately after receiving a completed copy of this Agreement, including the Schedule of Deviations (if any), contact the Employer's agent (whose details are given in the Contract Data) to arrange the delivery of any other bonds, guarantees, proof of insurance and any other documentation to be provided in terms of the Conditions of Contract identified in the Contract Data, within 14 days of the date on which this Agreement comes into effect. Failure to fulfil any of these obligations in accordance with those terms shall constitute a repudiation of this Agreement.

Notwithstanding anything contained herein, this Agreement comes into effect on the date when the Tenderer receives one fully completed original copy of this document, including the Schedule of Deviations (if any). Unless the Tenderer (now Contractor) within five days of the date of such receipt notifies the Employer in writing of any reason why he cannot accept the contents of this Agreement, this Agreement shall constitute a binding contract between the parties.

Signature:

Name: *(in capitals)*

Capacity:

Name of Employer *(organisation)*

Address:

.....

Witness: Signature: **Name:**

Date:

C. SCHEDULE OF DEVIATIONS

The extent of deviations from the tender documents issued by the Employer prior to the tender closing date is limited to those permitted in terms of the Tender Data and the Conditions of Tender.

A Tenderer's covering letter will not necessarily be included in the final contract document. Should any matter in such letter, which constitutes a deviation as aforesaid, become the subject of agreement reached during the process of offer and acceptance, the outcome of such agreement shall be recorded here.

Any other matter arising from the process of offer and acceptance either as a confirmation, clarification or change to the tender documents and which it is agreed by the Parties becomes an obligation of the contract shall also be recorded here.

Any change or addition to the tender documents arising from the above agreement and recorded here shall also be incorporated into the final draft of the Contract.

1. **Subject:**
Details:
.....
2. **Subject:**
Details:
.....
3. **Subject:**
Details:
.....
4. **Subject:**
Details:
.....
5. **Subject:**
Details:
.....
6. **Subject:**
Details:
.....

By the duly authorised representatives signing this Schedule of Deviations, the Employer and the Tenderer agree to and accept the foregoing Schedule of Deviations as the only deviations from and amendments to the documents listed in the Tender Data and addenda thereto as listed in the Tender Schedules, as well as any confirmation, clarification or change to the terms of the offer agreed by the Tenderer and the Employer during this process of offer and acceptance.

It is expressly agreed that no other matter whether in writing, oral communication or implied during the period between the issue of the tender documents and the receipt by the Tenderer of a completed signed copy of this Agreement shall have any meaning or effect in the contract between the parties arising from this Agreement.

FOR THE TENDERER:

Signature:

Name:

Capacity:

Tenderer: *(Name and address of organisation)*
.....

Witness:

Signature:

Name:

Date:

FOR THE EMPLOYER

Signature:

Name:

Capacity:

Employer: *(Name and address of organisation)*
.....

Witness:

Signature:

Name:

Date:

C1.2: CONTRACT DATA

C1.2.1: CONDITIONS OF CONTRACT

TABLE OF CONTENTS	PAGE NO.
C1.2.1.1 GENERAL CONDITIONS OF CONTRACT	C8
C1.2.1.2 SPECIAL CONDITIONS OF CONTRACT	C8
C1.2.1.2.1 GENERAL	C8
C1.2.1.2.2 AMENDMENTS TO THE GENERAL CONDITIONS OF CONTRACT 3rd Edition 2015.....	C8

C1.2.1 CONDITIONS OF CONTRACT

C1.2.1.1 GENERAL CONDITIONS OF CONTRACT

This Contract will be based on the "General Conditions of Contract for Construction Works - New Edition 2015", issued by the South African Institution of Civil Engineering (abbreviated title: "General Conditions of Contract 2015").

It is agreed that the only variations from the General Conditions of Contract 2015 are those set out hereafter under "Special Conditions of Contract".

C1.2.1.2 SPECIAL CONDITIONS OF CONTRACT

C1.2.1.2.1 GENERAL

These Special Conditions of Contract (SCC) form an integral part of the Contract. The Special Conditions shall amplify, modify or supersede, as the case may be, the General Conditions of Contract 2015 to the extent specified below, and shall take precedence and shall govern.

The clauses of the Special Conditions hereafter are numbered "SCC" followed in each case by the number of the applicable clause or subclause in the General Conditions of Contract 2015, and the applicable heading, or (where a new special condition that has no relation to the existing clauses is introduced) by a number that follows after the last clause number in the General Conditions of Contract 2015, and an appropriate heading.

C1.2.1.2.2 AMENDMENTS TO THE GENERAL CONDITIONS OF CONTRACT 2015

SCC 1.1.4. reads " The Commencement date shall be the date of the Site Handover Meeting".

iC1.2.2: CONTRACT DATA (Applicable to this contract)

PART A: DATA PROVIDED BY THE EMPLOYER

The following contract specific data are applicable to this contract.

REFERENCE	CONTRACT SPECIFIC DATA PROVIDED BY THE EMPLOYER
Clause 1.1.1.15:	Name of Employer: Umzimvubu Municipality
Clause 1.2.1.2:	Address of Employer: <div style="display: flex; justify-content: space-between;"> <div> <u>Physical:</u> Dabula Street Mount Frere 5090 </div> <div> <u>Postal:</u> Private Bag X 9020 Mount Frere 5090 </div> </div> E-Mail: Nota.Tobela@umzimvubu.gov.za Telephone No: (039) 255 8500 Fax No: (039) 255 0167
Clause 1.1.1.16:	Name of Engineer: Mr L. Moleko
Clause 1.2.1.2:	Address of Engineer: <div style="display: flex; justify-content: space-between;"> <div> <u>Physical:</u> Dabula Street Mount Frere 5090 </div> <div> <u>Postal:</u> Private Bag X 9020 Mount Frere 5090 </div> </div> E-Mail: Moleko.Lebohang@umzimvubu.gov.za Telephone No: (039) 255 8500 Fax No: (039) 255 0167
Clause 5.1.1 & 5.8.1:	Special non-working days are Sundays, the construction industry year end break and the following statutory public holidays as declared by National Government: New Year's Day, Human Rights Day, Good Friday, Family Day, Freedom Day, Workers' Day, Youth Day, National Women's Day, Heritage Day, Day of Reconciliation, Christmas Day and the Day of Goodwill.
Clause 5.8.1:	The construction industry year end break commences on the first working day after 15 December and ends on the first working day after 15 January of the next year.
Clause 5.3.2:	The time to deliver the Guarantee is within 14 days of the Commencement Date. The Liability of the Guarantee shall be for 10% of the Accepted Contract Price up to the Certificate of Completion, and thereafter the liability shall be reduced to 5% of the accepted contract price up to the issue of the Final Approval Certificate.
Clause 5.3:	The Contractor shall commence executing the Works within 14 days of the Commencement Date.
Clause 5.3.2:	The Contractor shall deliver his programme of work within 7 days of the

REFERENCE	CONTRACT SPECIFIC DATA PROVIDED BY THE EMPLOYER
	Commencement Date.
Clause 8.6	Insurance to be effected by the Contractor.
Clause 8.6.1.1.2:	The value of materials supplied by the Employer to be included in the insurance sum is <u>Nil</u> .
Clause 8.6.1.2:	Special Risks Insurance issued by SASRIA is required.
Clause 8.6.1.3:	The limit of indemnity for liability insurance is <u>R2 000 000,00 (two million rands only)</u> for any single liability claim. Liability insurance shall include spread of fire risk.
Clause 5.14:	The Works shall be completed as set out in the Scope of Works: <ul style="list-style-type: none"> In 03 months including special non-working days
Clause 5.13.1:	The penalty for failing to complete the whole of the Works is R1 500.00 (one thousand five hundred rands only) of the total Contract Price per day.
Clause 6.8.2:	<p>The value of the certificates issued shall be adjusted in accordance with the Contract Price Adjustment Schedule :</p> <p>The value of the certificates issued shall be adjusted in accordance with the Contract Price Adjustment Schedule with the following values:</p> <p>The value of "x" is 0.1</p> <p>The values of the coefficients are:</p> <p>a = [0, 25] (labour)</p> <p>b = [0, 30] (contractor's equipment)</p> <p>c = [0, 25] (material)</p> <p>d = [0, 20] (fuel)</p> <p>The area nearest the Site is Durban</p> <p>The labour index will be as published by STATSSA for the Eastern Cape</p>
Clause 6.8.3:	Price adjustments for variations in the cost of special materials is allowed.
Clause 6.10.1.5:	The percentage limit on materials not yet built into the Permanent Works is 80%.
Clause 6.10.3:	The percentage retention on the amounts due to the Contractor is 10% to a minimum of 5%..
Clause 6.2:	A Retention Money Guarantee is Not Permitted .
Clause 10.7.1:	Dispute Resolution shall be by Mediation.

C1.2.2: CONTRACT DATA (Applicable to this contract)

PART B: DATA PROVIDED BY THE CONTRACTOR

The following contract specific data are applicable to this contract.

REFERENCE	CONTRACT SPECIFIC DATA PROVIDED BY THE CONTRACTOR
Clause 1.1.8:	Name of the Contractor:
Clause 1.2.2:	Address of the Contractor: <div><div><u>Physical:</u></div><div><u>Postal:</u></div></div>

C1.3: FORM OF GUARANTEE

PRO FORMA

ii FORM OF GUARANTEE

For use with the General Conditions of Contract for Construction Works, Third Edition (2015).

GUARANTOR DETAILS AND DEFINITIONS

Guarantor” means:

Physical address:

“Employer” means:

“Contractor” means:

“Employer’s Agent” means:

.....

“Works” means:

“Site” means:

“Contract” means: The Agreement made in terms of the Form of Offer and Acceptance and such amendments or additions to the Contract as may be agreed in writing between the parties.

“Contract Sum” means: The accepted amount inclusive of tax of R

Amount in words:

“Guaranteed Sum” means: The maximum aggregate amount of R

Amount in words:

Type of Performance Guarantee: (*Insert Variable or Fixed*)

“Expiry Date” means: (*Give date*) or any other later date set by the Contractor and/or Employer provided such instruction is received prior to the Expiry Date as indicated here.

CONTRACT DETAILS

Employer's Agent issues: Interim Payment Certificates, Final Payment Certificate and the Certificate of Completion of the Works as defined in the Contract.

1. VARIABLE PERFORMANCE GUARANTEE

1.1 Where a Variable Performance Guarantee has been selected, the Guarantor's liability shall be limited during the following periods to diminishing amounts of the Guaranteed Sum as follows:

1.1.1 From and including the date of signing the Performance Guarantee up to and including the date of the interim payment certificate certifying, for the first time, more than 50% of the Contract Sum:

R.....

(Amount in words)

1.1.2 From the day following the date of the said interim payment certificate up to and including the Expiry Date, or the date of issue by the Employer's Agent of the Certificate of Completion of the Works, whichever occurs first:

R.....

(Amount in words)

1.2 The Employer's Agent and/or the Employer shall advise the Guarantor in writing of the date on which the interim payment certificate certifying, for the first time, more than 50% of the Contract Sum, has been issued and the date on which the Certificate of Completion of the Works has been issued.

2. FIXED PERFORMANCE GUARANTEE

2.1 Where a Fixed Performance Guarantee has been selected, the Guarantor's liability shall be limited to the amount of the Guaranteed Sum.

2.2 The Guarantor's period of liability shall be from and including the date on which the Performance Guarantee is signed, up to and including the Expiry Date, or the date of issue by the Employer's Agent of the Certificate of Completion of the Works, or the date of payment in full of the Guaranteed Sum, whichever occurs first.

2.3 The Employer's Agent and/or the Employer shall advise the Guarantor in writing of the date on which the Certificate of Completion of the Works has been issued.

3. CONDITIONS APPLICABLE TO VARIABLE AND FIXED PERFORMANCE GUARANTEES

3.1 The Guarantor hereby acknowledges that:

3.1.1 Any reference in this Performance Guarantee to the Contract is made for the purpose of convenience and shall not be construed as any intention whatsoever to create an accessory obligation or any intention whatsoever to create a suretyship.

3.1.2 Its obligation under this Performance Guarantee is restricted to the payment of money.

3.2 Subject to the Guarantor's maximum liability referred to in 1.1 or 2.1, the Guarantor hereby undertakes to pay the Employer the sum certified upon receipt of the documents identified in 3.2.1 to 3.2.3:

3.2.1 A copy of a first written demand issued by the Employer to the Contractor stating that payment of a sum certified by the Employer's Agent in an Interim or Final Payment Certificate has not been made in terms of the Contract and failing such payment within seven (7) calendar days, the Employer intends to call upon the Guarantor to make payment in terms of 3.2.2;

3.2.2 A first written demand issued by the Employer to the Guarantor at the Guarantor's physical address with a copy to the Contractor stating that a period of seven (7) days has elapsed since the first written demand in terms of 3.2.1 and the sum certified has still not been paid;

3.2.3 A copy of the aforesaid payment certificate which entitles the Employer to receive payment in terms of the Contract of the sum certified in 3.2.

3.3 Subject to the Guarantor's maximum liability referred to in 1.1 or 2.1, the Guarantor undertakes to pay to the Employer the Guaranteed Sum or the full outstanding balance upon receipt of a first written demand from the Employer to the Guarantor at the Guarantor's physical address calling up this Performance Guarantee, such demand stating that:

3.3.1 the Contract has been terminated due to the Contractor's default and that this Performance Guarantee is called up in terms of 3.3; or

3.3.2 a provisional or final sequestration or liquidation court order has been granted against the Contractor and that the Performance Guarantee is called up in terms of 3.3; and

3.3.3 the aforesaid written demand is accompanied by a copy of the notice of termination and/or the provisional/final sequestration and/or the provisional liquidation court order.

3.4 It is recorded that the aggregate amount of payments required to be made by the Guarantor in terms of 3.2 and 3.3 shall not exceed the Guarantor's maximum liability in terms of 1.1 or 2.1.

3.5 Where the Guarantor has made payment in terms of 3.3, the Employer shall upon the date of issue of the Final Payment Certificate submit an expense account to the Guarantor showing how all monies received in terms of this Performance Guarantee have been expended and shall refund to the Guarantor any resulting surplus. All monies refunded to the Guarantor in terms of this Performance Guarantee shall bear interest at the prime overdraft rate of the Employer's bank compounded monthly and calculated from the date payment was made by the Guarantor to the Employer until the date of refund.

3.6 Payment by the Guarantor in terms of 3.2 or 3.3 shall be made within seven (7) calendar days upon receipt of the first written demand to the Guarantor.

3.7 Payment by the Guarantor in terms of 3.3 will only be made against the return of the original Performance Guarantee by the Employer.

- 3.8** The Employer shall have the absolute right to arrange his affairs with the Contractor in any manner which the Employer may consider fit and the Guarantor shall not have the right to claim his release from this Performance Guarantee on account of any conduct alleged to be prejudicial to the Guarantor.
- 3.9** The Guarantor chooses the physical address as stated above for the service of all notices for all purposes in connection herewith.
- 3.10** This Performance Guarantee is neither negotiable nor transferable and shall expire in terms of 1.1.2 or 2.2, where after no claims will be considered by the Guarantor. The original of this Guarantee shall be returned to the Guarantor after it has expired.
- 3.11** This Performance Guarantee, with the required demand notices in terms of 3.2 or 3.3, shall be regarded as a liquid document for the purposes of obtaining a court order.
- 3.12** Where this Performance Guarantee is issued in the Republic of South Africa the Guarantor hereby consents in terms of Section 45 of the Magistrates' Courts Act No 32 of 1944, as amended, to the jurisdiction of the Magistrate's Court of any district having jurisdiction in terms of Section 28 of the said Act, notwithstanding that the amount of the claim may exceed the jurisdiction of the Magistrate's Court.

Signed at

Date

Guarantor's signatory (1)

Capacity

Guarantor's signatory (2)

Capacity

Witness signatory (1)

Witness signatory (2)

C1.4: AGREEMENT IN TERMS OF SECTION 37(2) OF THE OCCUPATIONAL HEALTH AND SAFETY ACT No 85 OF 1993

THIS AGREEMENT is made between The Umzimvubu Local Municipality.
(hereinafter called the EMPLOYER) of the one part, herein represented by:

.....
in his capacity as: ;
AND:
(hereinafter called the CONTRACTOR) of the other part, herein represented by
.....
in his capacity as:
duly authorised to sign on behalf of the Contractor.

WHEREAS the CONTRACTOR is the Mandatary of the EMPLOYER in consequence of an agreement between the CONTRACTOR and the EMPLOYER in respect of:

CONTRACT No. UMZ/2023-24 /INFRA/CAP/ 023

for the Installation of borehole for the new municipal offices;

AND WHEREAS the EMPLOYER and the CONTRACTOR have agreed to enter into an agreement in terms of the provisions of Section 37(2) of the Occupational Health and Safety Act No 85 of 1993, as amended by OHSA Amendment Act No 181/1993 (hereinafter referred to as the ACT);

NOW THEREFORE the parties agree as follows:

1. The CONTRACTOR undertakes to acquaint the appropriate officials and employees of the CONTRACTOR with all relevant provisions of the ACT and the regulations promulgated in terms thereof.
2. The CONTRACTOR undertakes to fully comply with all relevant duties, obligations and prohibitions imposed in terms of the ACT and Regulations: Provided that should the EMPLOYER have prescribed certain arrangements and procedures that same shall be observed and adhered to by the CONTRACTOR, his officials and employees. The CONTRACTOR shall bear the onus of acquainting himself/herself/itself with such arrangements and procedures.
3. The CONTRACTOR hereby accepts sole liability for such due compliance with the relevant duties, obligations, prohibitions, arrangements and procedures, if any, imposed by the ACT and Regulations, and the CONTRACTOR expressly absolves the EMPLOYER and the Employer's CONSULTING ENGINEERS from being obliged to comply with any of the aforesaid duties, obligations, prohibitions, arrangements and procedures in respect of the work included in the contract.
4. The CONTRACTOR agrees that any duly authorised officials of the EMPLOYER shall be entitled, although not obliged, to take such steps as may be necessary to ensure that the CONTRACTOR has complied with his undertakings as more fully set out in paragraphs 1 and 2 above, which steps may include, but shall not be limited to, the right to inspect any appropriate site or premises occupied by the CONTRACTOR, or to take such steps the EMPLOYER may deem necessary to remedy the default of the CONTRACTOR at the cost of the CONTRACTOR.

5. The CONTRACTOR shall be obliged to report forthwith to the EMPLOYER any investigation, complaint or criminal charge which may arise as a consequence of the provisions of the ACT and Regulations, pursuant to work performed in terms of this agreement, and shall, on written demand, provide full details in writing of such investigation, complaint or criminal charge.

Thus signed at for and on behalf of the **CONTRACTOR**

on this the day of 20.....

SIGNATURE:

NAME AND SURNAME:

CAPACITY:

WITNESSES: 1.

2.

Thus signed at for and on behalf of the **EMPLOYER** on this

the day of 20.....

SIGNATURE:

NAME AND SURNAME:

CAPACITY:

WITNESSES: 1.

2.

C2: PRICING DATA

C2.1 PRICING INSTRUCTIONS

1. GENERAL

The Schedule of Quantities forms part of the Contract Documents and must be read and priced in conjunction with all the other documents comprising the Contract Documents, which include the Conditions of Tender, Conditions of Contract, the Specifications (including the Project Specifications) and the Drawings.

2. DESCRIPTION OF ITEMS IN THE SCHEDULE

The Schedule of Quantities has been drawn up generally in accordance with the relevant provisions of the GUIDELINES FOR HUMAN SETTLEMENT PLANNING AND DESIGN Standard Specifications for Road and Bridge Works for State Road Authorities (1998 edition) published by the South African Institution of Civil Engineering (SAICE).

The short descriptions of the items in the Schedule of Quantities are for identification purposes only and the measurement and payment clause of the GUIDELINES FOR HUMAN SETTLEMENT PLANNING AND DESIGN Standard Specifications (1998 edition) and the Particular Specifications, read together with the relevant clauses of the amendments and additions contained in the Project Specifications and directives on the drawings, set out what ancillary or associated work and activities are included in the rates for the operations specified.

The item numbers appearing in the Schedule of Quantities refer to the corresponding item numbers in the GUIDELINES FOR HUMAN SETTLEMENT PLANNING AND DESIGN Standard Specifications (1998 edition). Item numbers prefixed by the letter B refer to items of payment described in Part B Amendments to the Standard Specifications.

For the purposes of this Schedule of Quantities, the following words shall have the meanings hereby assigned to them:

Unit: The unit of measurement for each item of work as defined in the specifications.

Quantity: The number of units of work for each item.

Rate: The payment per unit of measurement at which the Tenderer tenders to do the work.

Amount: The product of the quantity and the rate tendered for an item.

Lump Sum: An amount tendered for an item, the extent of which is described in the Schedule of Quantities, the specifications or elsewhere but the quantity of work of which is not measured in any units.

3. QUANTITIES REFLECTED IN THE SCHEDULE

The quantities given in the Schedule of Quantities are estimates only, and are subject to re-measure during the execution of the work. The quantities finally accepted and certified for payment, and not the quantities given in the Schedule of Quantities, shall be used to determine payments to the Contractor. The Contractor shall obtain the Engineer's detailed instructions for all work before ordering any materials or executing work or making arrangements for it if the quantity estimated from the drawings are greater or less than 10% of the quantities of material or work stated in the Schedule of Quantities. The quantities of material or work stated in the Schedule of Quantities shall not be regarded as authorisation for the Contractor to order material or to execute work.

The Works as finally completed in accordance with the Contract shall be measured and paid for as specified in the Schedule of Quantities and in accordance with the General and Special Conditions of Contract, the GUIDELINES FOR HUMAN SETTLEMENT PLANNING AND DESIGN Standard Specifications subclause 1201(a), the Project Specifications and the Drawings. Unless otherwise

stated, items are measured net in accordance with the Drawings, and no allowance has been made for waste. The validity of the contract will in no way be affected by differences between the quantities in the Schedule of Quantities and the quantities finally certified for payment.

4. PROVISIONAL SUMS

Where Provisional sums or Prime Cost sums are provided for items in the Schedule of Quantities, payment for the work done under such items will be made in accordance with clause 45 of the General Conditions of Contract 2015. The Employer reserves the right, during the execution of the works, to adjust the stated amounts upwards or downwards according to the work actually done under the item, or the item may be omitted altogether, without affecting the validity of the Contract.

The Tenderer shall not under any circumstances whatsoever delete or amend any of the sums inserted by the Employer in the "Amount" column of the Schedule of Quantities and in the Summary of the Schedule of Quantities unless ordered or authorised in writing by the Employer before closure of tenders. Any unauthorised changes made by the Tenderer to provisional items in the schedule, or to the provisional percentages and sums in the Summary of the Schedule of Quantities, will be treated as arithmetical errors.

5. PRICING OF THE SCHEDULE OF QUANTITIES

The prices and rates to be inserted by the Tenderer in the Schedule of Quantities shall be the full inclusive prices to be paid by the Employer for the work described under the several items, and shall include full compensation for all costs and expenses that may be required in and for the completion and maintenance during the defects liability period of all the work described and as shown on the drawings as well as all overheads, profits, incidentals and the cost of all general risks, liabilities and obligations set forth or implied in the documents on which the Tender is based. The rates and lump sums shall be comprehensive in accordance with sub-clause 1201(b) of the GUIDELINES FOR HUMAN SETTLEMENT PLANNING AND DESIGN Standard Specifications for Road and Bridge Works for State Road Authorities (1998 edition).

Each item shall be priced and extended to the "Amount" column by the Tenderer, with the exception of the items for which only rates are required, or items which already have Prime Cost or Provisional Sums affixed thereto. If the Tenderer omits to price any items in the Schedule of Quantities, then these items will be considered to have a nil rate or price.

All items for which terminology such as "inclusive" or "not applicable" have been added by the Tenderer will be regarded as having a nil rate which shall be valid irrespective of any change in quantities during the execution of the Contract.

Should the Tenderer group a number of items together and tender one lump sum for such group of items, this single lump sum shall apply to that group of items and not to each individual item.

The tendered lump sums and rates shall be valid irrespective of any change in the quantities during the execution of the contract.

The Tenderer shall fill in rates for all items where the words "rate only" appear in the "Amount" column. The provisions of sub-clause 1201(f) of the GUIDELINES FOR HUMAN SETTLEMENT PLANNING AND DESIGN Standard Specifications shall apply in rate only items. "Rate Only" items have been included where:

- (a) an alternative item or material is contemplated;
- (b) variations of specified components in the make-up of a pay item may be expected; and
- (c) no work under the item is foreseen at tender stage but the possibility that such work may be required is not excluded.

For "Rate Only" items, no quantities are given in the "Quantity" column but the quoted rate shall apply in the event of work under this item being required. The Tenderer shall, however, note that in terms of the Tender Data the Tenderer may be asked to reconsider any such rates which the Employer may regard as unbalanced.

Reasonable compensation will be received where no payment item appears in respect of work required

in terms of the Contract which is not covered in any other pay item.

All rates and amounts quoted in the Schedule of Quantities shall be in Rands and cents and shall include all levies and taxes (other than VAT). VAT will be added in the summary of the Schedule of Quantities. Note that fractions of a cent in all rates shall be discounted.

6. CORRECTION OF ENTRIES

Incorrect entries shall not be erased or obliterated with correction fluid but must be crossed out neatly. The correct figures must be entered above or adjacent to the deleted entry, and the alteration must be initialled by the Tenderer.

7. INTERIM PAYMENTS

Unless otherwise specified, monthly payments, referred to in Clause 52 of the General Conditions of Contract 2015, in respect of "sum" items in the Schedule of Quantities shall be by means of interim progress instalments assessed by the Engineer and based on the measure in which the work actually carried out relates to the extent of the work to be done by the Contractor.

Notwithstanding any custom to the contrary, the work as executed will be measured for payment in accordance with the methods described in the contract documents under the various items of payment.

Attention is directed to the provisions of clause 1220 of the Standard Specifications regarding the measurement of quantities for payment. Except where specified otherwise than in clause 1220, the nett measurements or mass of the finished work in place shall be taken for payment, but any quantity of work in excess of that prescribed shall be excluded.

8. UNITS OF MEASUREMENT

The units of measurement described in the Schedule of Quantities are metric units. The following abbreviations are used in the Schedule of Quantities.

mm	= millimetre	m ³ -km	= cubic metre-kilometre	Prov sum	= provisional sum
m	= metre	l	= litre	kPa	= kilopascal
km	= kilometre	kl	= kilolitre	MPa	= megapascal
km-pass	= kilometre-pass	kg	= kilogram	MN	= meganewton
m ²	= square metre	t	= tonne (1 000 kg)	t-km	= tonne-kilometre
m ² -pass	= square metre-pass	No.	= number	hr	= hour
ha	= hectare	%	= percent	dia	= diameter
m ³	= cubic metre	PC sum	= prime cost sum	Sum	= lump sum
kW	= kilowatt	MN-m	= meganewton-metre		

9. CONSISTENCY OF RATES

In order to ensure that payments certified by the Engineer are reasonably consistent with the market value of the work done, and that variations in quantities do not distort the contract valuation, the rates, prices and amounts tendered in the Schedule of Quantities are required to be in balance.

A tender will be considered out of balance if:

- (i) the combined, extended total tendered for the item:

13.01 The Contractor's general obligations

- (a) Fixed obligations
- (b) Value-related obligations
- (c) Time-related obligations

exceeds a maximum of 12% of the Tender Offer (excluding contingencies, escalation and VAT).

- (ii) the rates, prices or amounts tendered for any other items differ by more than 20 (twenty) percent from either the next highest or next lowest rates, prices or amounts tendered, or else from the latest estimates.

Any such unbalanced tender may be rejected if, after fourteen (14) days of having been given written notice by the Employer to adjust those rates or lump sums which are unreasonable or out of balance, the Tenderer fails to make the necessary satisfactory adjustments. These adjustments in rectification will be such that increases are balanced by decreases, leaving the tender offer unchanged.

C2.2. SCHEDULE OF QUANTITIES

UMZUMVUBU LOCAL MUNICIPALITY
CONTRACT No. UMZ/2023-24/INFRA/CAP/023
FOR
INSTALLATION OF BOREHOLE FOR NEW MUNICIPAL OFFICES
TENDER SUMMARY

DRILLING & EQUIPING OF BOREHOLE WITH CIVIL WORKS

ITEM NO		DESCRIPTION	UNIT	QTY	RATE	TOTAL
1		Section 1				
		Preliminaries and General				
	1,1	Site Establishment of Drilling Equipment	Lump sum	1		
	1,2	Fixed Contractual Obligations	Lump sum	1		
2	2,1	Health & Safety Health & Safety requirements for the duration of the project	Lump sum	1		

ITEM NO	DESCRIPTION	UNIT	QTY	RATE	TOTAL
2	Section 2 BOREHOLE DRILLING				
	2,1 Borehole sitting Siting Boreholes: Geophysical Surveying Two of the main geophysical techniques used in borehole siting are electrical resistivity ; and ground conductivity using FEM (frequency domain electromagnetic) . It is important that geophysical techniques are carried out and interpreted carefully by well-trained personnel.	Lump sum	1		
	2,2 Drilling of borehole to depth not exceeding 120 meters	meters	150		
	2,3 Pump step test 24 hours	No	1		
	2,4 Borehole Completion Data	L/sum	1		
	2,5 Water chemical analysis report	L/sum	1		

ITEM NO	DESCRIPTION	UNIT	QTY	RATE	TOTAL
	Section 3				
	Civil pipe installation from borehole to existing connection point.				
	EARTHWORKS: PIPE TRENCHES				
3.3.1	SITE CLEARANCE Remove vegetation and smaller trees up to 1m girth.	m			
3,3,2	EXCAVATION Excavate in all materials for pipe trenches for pipes with a diameter of 63 mm, backfill and compact, incl. dispose surplus/unsuitable material to be following depths.				
(a)	0.0. m to 0.82 m	m	600		
(b)	0.0 m to 1.2 m	m	200		
	BACKFILLING Utilize existing materials from excavated trenches				
3.3.3	Backfilling of piping with compaction	m	600		

ITEM NO	DESCRIPTION	UNIT	QTY	RATE	TOTAL
---------	-------------	------	-----	------	-------

	Section 4				
	COMPRESSION CONNECTIONS				
4	4.1. Supply and install at connection points identified by the Client.				
1	(a) 63mm HDPE CL12	meter	800		
	(b) 63mm Compression Couplers	ea	24		
	4.2. Supply and install compression fittings on 63mm HDPE pump main.				
1	(a) 25mm Double acting Air valve	ea	4		
5	CONCRETE WORKS				
	5.1. Air valve Chamber				
1	Construct 1000 x 500 brick chamber with Cast iron valve cover and lid 450 x 450mm	ea	4		
	2.1. PUMP HOUSE				
2	(a) Construct 150mm Concrete slab 3500 x 3500. Note re-enforced mesh should be to a dept. of 50mm. Activity include earthworks.	Lump sum	1		
	(b) Cast plinth 1000 x 100mm thick concrete reinforced (15MPA Strength)	Lump sum	1		
	(c) Construct 250mm cement brick structure 2835 x 3000, plastered inside and outside as per diagram.	Lump sum	1		
	(d) Construct 160mm concrete slab as roof of the structure with sloping screed	Lump sum	1		
	(e) Supply and install 2000 x 1500 double steel door or similar approved	Lump sum	1		
	(f) Supply and install 1000 x 1000 steel window / ventilator current outlets or similar approved.	Lump sum	1		
	(g) Supply and install 950mm x 650mm Cast iron lockable frame & cover on roof slab of pump house.	Lump sum	1		

	(e) Supply and install Gant tree above pump house. Ref details	Lump sum	1		
Total					

ITEM NO	DESCRIPTION	UNIT	QTY	RATE	TOTAL
5	Section 5				
	Mechanical & electrical				
5.1	Supply and install orbit borehole pump complete with switchgear with base plate mounted to plinth. Allowance for a 3litre /sec - 130m head- submersible pump with genset.	Lump sum	1		
5.2	All borehole safety equipment on pumping main should be installed for pump , borehole and pipeline protection.	Lump sum	1		
5.2	Sundries				
5.2.1	Testing , disinfection of system	Lump sum	1		
5.2.2	Supply padlocks for all manholes/door	ea	6		
Total					

Section 1
Preliminaries and General

Section 2
BOREHOLE DRILLING

Section 3
Civil pipe installation from
borehole to existing
connection point.

Section 4
COMPRESSION CONNECTIONS

Section 5
Mechanical & electrical

SUB
TOTAL

VAT
15%

TOTAL

DESCRIPTION	AMOUNT
Totals of Schedule of Quantities brought forward:	
SUBTOTAL 1	R
Add: VAT (15% of SUBTOTAL 2)	R
TOTAL CARRIED FORWARD TO FORM OF OFFER	R

Signed on behalf of the Tenderer: (Signature)

Date:

Tenderer's Name: (Company Name)

C3: SCOPE OF WORK

<u>TABLE OF CONTENTS</u>	PAGE
C3.1 STANDARD SPECIFICATIONS.....	C25
C3.2 PROJECT SPECIFICATIONS.....	C25
PART A: GENERAL	
1. DESCRIPTION OF THE WORKS	C26
2. DRAWINGS	C30
PART B: AMENDMENTS TO THE STANDARD SPECIFICATIONS	
PROJECT SPECIFICATIONS RELATING TO THE STANDARD SPECIFICATIONS AND OTHER ADDITIONAL SPECIFICATIONS	C31
SECTION 1100 DEFINITIONS AND TERMS	C32
SECTION 1200 GENERAL REQUIREMENTS AND PROVISIONS	C34
SECTION 1300 CONTRACTOR'S ESTABLISHMENT ON SITE AND..... GENERAL OBLIGATIONS.....	C38
SECTION 1600 OVERHAUL.....	C41
SECTION 2100 DRAINS.....	C42
SECTION 2200 PREFABRICATED CULVERTS.....	C43
SECTION 3300 MASS EARTHWORKS	C44
SECTION 3400 PAVEMENT LAYERS OF GRAVEL MATERIAL	C45
SECTION 5600 ROAD SIGNS.....	C47
SECTION 5900 FINISHING THE ROAD AND ROAD RESERVE	
AND TREATING OLD ROADS	C48
SECTION 8200 QUALITY CONTROL (SCHEME 1)	C49
C3.3 PARTICULAR SPECIFICATIONS	
PART C: ENVIRONMENTAL MANAGEMENT SPECIFICATION	C52
PART D: DAYWORK	C57
PART E: OHSA 1993 HEALTH AND SAFETY SPECIFICATION.....	C59

C3.1 STANDARD SPECIFICATIONS

The Standard Specifications on which this contract is based, are Compiled under the patronage of the Department of Housing by CSIR Building and Construction Technology Red Book Volume 2 (Guidelines for Human Settlement Planning and Design)

iii

iv C3.2: PROJECT SPECIFICATIONS

The Project Specifications, consisting of two parts, form an integral part of the Contract and supplement the Standard Specifications.

Part A contains a general description of the Works, the Site and the requirements to be met.

Part B contains variations, amendments and additions to the Standard Specifications and, if applicable, the Particular Specifications.

In the event of any discrepancy between a part or parts of the Standard or Particular Specifications and the Project Specifications, the Project Specifications shall take precedence. In the event of a discrepancy between the Specifications (including the Project Specifications) and the drawings and / or the Schedule of Quantities, the discrepancy shall be resolved by the Engineer before the execution of the work under the relevant item.

The Standard Specifications, which form part of this contract, have been written to cover all phases of work normally required for road contracts, and they may therefore cover items not applicable to this particular contract.

C3.2: PROJECT SPECIFICATIONS

PART A: GENERAL

1. DESCRIPTION OF THE WORKS

1.1 Employer's Objectives

This project forms part of 2023/24 Financial Year Project of the Umzimvubu Local Municipality Infrastructure programme.

1.2 Location of the Works

The project is in the Eastern Cape Province in the town of kwaBhaca, in **Ward 18** of the Umzimvubu Local Municipality. (See C4: Locality plan)

1.3 Overview of the Works

The project for: Installation of borehole for New Offices comprises the:

- Sitting & Drilling of Borehole
- Equipping borehole with pump house
- Supply ,lay and install pumping main to existing Municipal connection point

1.4 Extent of the Works

The Contractor shall carry out all works required for the Drilling and Equipping of borehole for the Umzimvubu LM offices :

Including but not limited to:

- (a) Establishment on site;
- (b) Provision of traffic accommodation facilities;
- (c) Protection against all works;
- (d) Construction of pump house & manhole chambers;
- (e) Installation of submersible pump with motor
- (f) Installation of air valves ;
- (g) Continuous quality control over materials and works, and compliance with the Particular Specifications with regard to environmental management and occupational health and safety, during all the above construction activities;
- (h) Finishing off, removal of site establishment

1.5 Detailed Description of the Works

The following description is a broad outline of the works and does not limit the work to be executed by the Contractor in terms of the contract. The quantities of some of the major items indicated in this section are indicative, not absolute, and are provided to define in general terms the overall scope of the project.

Approximate quantities of each type of work to be carried out in accordance with the contract documents are listed in the Schedule of Quantities in Section C2.2.

The site shall not only comprise the proclaimed drilling site identified but shall be extended in the broader sense to take account of all areas occupied by the Contractor, be it deliberate or unintentional, in the execution of the contract. The site includes all the land within the proclaimed limits of the Municipal cadastral the extent of the works, which include all construction points.

Incidental intrusion into private or tribal property outside the Municipal cadastral shall not be permitted without the

owner's written authority. Any such agreement reached with a private or tribal landowner (occupier) shall include the proviso that any material or equipment on that site shall remain the exclusive property of the Employer in terms of the contract.

1.5.1 Access to the Site

To be communicated by the project manager during site briefing meeting.

1.5.2 Existing services

The relevant service provider is to be notified immediately if any service requires relocation.

1.5.3 Engineer's campsite

No provision has been made for an Engineers campsite as the project will be managed in house.

1.5.4 Climate

Mt Frere has a fair climate and the temperatures ranges between 10 and 35 degrees in summer. In winter temperatures are very cold. There is less rain in winter. Most areas are very dry.

1.5.5 Environment

The Contractor's attention is called to clause B1233 of Part B of these Project Specifications and to the requirements of Part C: Environmental Management Specification contained in section C3.3 Particular Specifications.

1.5.6 Community Liaison Officer (CLO) N/A

The ward councillor in whose wards work is to be done will collectively identify a Community Liaison Officer (CLO) for the project and make the person known to the Contractor at the Site Handover Meeting. The Contractor will be required to enter into a written agreement with the CLO that specifies:

- Designation;
- The wage rate;
- Hours of work;
- Duration of appointment;
- The CLO's responsibility should include the following:
 1. Attend monthly site meetings;
 2. Assisting in all respects relating to the recruitment of local labour;
 3. Acting as a source of information for the community and councillors on any issue related to the contract;
 4. Keep the Contractor informed on community issues that may affect the contract;
 5. Set up meetings and mediate if any labour dispute arises;
 6. Keep a written record of all labour related issues
 7. Any other duties the Contractor may request the CLO to undertake, only with prior consultation;

The Contractor shall have the right to determine the number of labourers required at any given time, which will vary throughout the duration of the contract.

1.5.10 Labour

Local labour is to be used and the employment of such labour is to be effected by the Contractor through Community Liaison Officer (CLO) within the Umzimvubu Municipal area. The CLO shall assist the Contractor with

the recruitment of local labourers to ensure an equitable distribution of people employed from those wards in the vicinity of the works at a rate of **R0 Monthly**.

The **minimum labour rate is R 140/day** in accordance with the Municipal Infrastructure – An Industry Guide to Infrastructure Service Delivery Levels and Unit Costs by Co-operative Governance & Traditional Affairs.

1.6 Testing of materials

The Contractor shall carry out the required process soil sample test to identify the different ground layers

The Contractor is to ensure all drilling stockpiles are recorded and pictures provided with tabled Data.

1.7 Power supply and other services

The Contractor shall make his own arrangements concerning the supply of electrical power and all other services. No direct payment shall be made for the provision of electrical and other services. The cost thereof shall be deemed to be included in the rates and amounts tendered for the various items of work for which these services are required.

1.8 Contractor's campsite

Possible locations for a campsite shall be pointed out at the clarification meeting.

The Contractor shall make his own arrangements for the provision of his campsite and housing for construction personnel but the chosen site shall be subject to the approval of the Engineer, the local authorities and the CLO associated with the project.

The standard of the Contractor's camp, offices, accommodation, ablution, and other facilities must comply with the requirements of all local authority, environmental and industrial regulations concerned. In establishing and maintaining his campsite, due cognisance is to be taken of the requirements of clause B1233 of these Project Specifications.

The Contractor is to fully familiarise himself with all local by-laws and Government regulations for the employment, transport and accommodation of labour on site.

Security will be required for all plant, establishment, temporary works and partially completed works. The Contractor shall be responsible for providing security for all plant, establishment, temporary works and partially completed works. No separate payment shall be made for the provision of such security since full compensation for these costs shall be deemed to be included in the amount tendered for item 13.01(c) (The contractor's general obligations: Time-related obligations).

1.9 Additional requirements for construction activities

The travelling public shall have the right of way on public roads, and the Contractor shall make use of approved methods to control the movement of his equipment and vehicles so as not to constitute a hazard on the road.

The Contractor's tendered rates shall include full compensation for all costs which may arise from the construction and maintenance of deviations and construction under traffic. No claim for additional costs which may arise from these methods of traffic accommodation and no additional payment owing to inconvenience as a result of the Contractor's method of working shall be considered.

1.10 Construction programme

The construction programme is to be submitted to the Engineer for approval within 7 days of the Site Handover meeting.

The construction programme must show the following information:

- Baseline dates (start date/finish date/duration of all activities);
- Non-working days (Sundays/public holidays/contractor long weekends);
- Critical part of the project
- Anticipated completion date to match cash flow projection

2. DRAWINGS

The reduced drawings that form part of the Tender Documents are to be used for tender purposes only.

The Contractor will be supplied with an unreduced A0 Size or A1 Size print of each of the Drawings. These prints will be issued free of charge and the Contractor must make any additional copies he may require at his own cost.

Any information in the possession of the Contractor that is required by the Engineer's Representative to complete his as-built drawings must be supplied to the Engineer's Representative before a Certificate of Completion will be issued.

Only figured dimensions must be used and Drawings must not be scaled unless required by the Engineer. The Engineer will supply any figured dimensions that may have been omitted from the Drawings.

The levels given on the Structural Drawings are subject to confirmation on the Site and the Contractor shall submit all levels to the Engineer for confirmation before he commences construction of any structure. The Contractor shall also check all clearances given on the Drawings and shall inform the Engineer of discrepancies.

C3.2: PROJECT SPECIFICATIONS

PART B: AMENDMENTS TO THE STANDARD SPECIFICATIONS

PROJECT SPECIFICATIONS RELATING TO THE STANDARD SPECIFICATIONS AND OTHER ADDITIONAL SPECIFICATIONS

In certain clauses in the Guidelines for Human Settlement Planning and Design Standard Specifications, allowance is made for a choice to be specified in the Project Specifications between alternative materials or methods of construction, and for additional requirements to be specified to suit a particular contract. Details of such alternatives or additional requirements applicable to this Contract are contained in this part of the Project Specifications. It also contains the necessary additional specifications required for this Contract.

The clauses and payment items dealt with in this part of the Project Specifications are numbered 'B' with a number corresponding to the relevant clause or item number in the Guidelines for Human Settlement Planning and Design Standard Specifications.

New clauses and payment items not covered by clauses or items in the GUIDELINES FOR HUMAN SETTLEMENT PLANNING AND DESIGN Standard Specifications have been included here and have also been designated with the prefix 'B'. Such clauses and items have been given a new number following upon the last number used in the particular section referred to in the GUIDELINES FOR HUMAN SETTLEMENT PLANNING AND DESIGN Standard Specifications.

SECTION 1100: DEFINITIONS AND TERMS

B1115 GENERAL CONDITIONS OF CONTRACT

Replace clause 1115 with the following:

“The General Conditions of Contract 3rd Edition 2015 published by the South African Institution of Civil Engineering (SAICE), together with the Special Conditions of Contract form part of the contract.

All references in the GUIDELINES FOR HUMAN SETTLEMENT PLANNING AND DESIGN Standard Specifications for Road and Bridge Works are to the GUIDELINES FOR HUMAN SETTLEMENT PLANNING AND DESIGN General Conditions of Contract for Road and Bridge Works for State Road Authorities. Consequently all references in the GUIDELINES FOR HUMAN SETTLEMENT PLANNING AND DESIGN Standard Specifications have to be amended accordingly to reflect the appropriate General Conditions of Contract relevant to the Contract. The GUIDELINES FOR HUMAN SETTLEMENT PLANNING AND DESIGN Standard Specifications have been scrutinized and the clauses, which refer to the GUIDELINES FOR HUMAN SETTLEMENT PLANNING AND DESIGN General Conditions of Contract, identified. Each GUIDELINES FOR HUMAN SETTLEMENT PLANNING AND DESIGN clause reference is tabulated in Table B1115 below (context of reference is also given) together with the relevant equivalent clause in the SAICE General Conditions of Contract for Construction Works New edition 2015 applicable for this contract.

SECTION 1200: GENERAL REQUIREMENTS AND PROVISIONS

B1202 SERVICES

A provisional sum is included in the Schedule of Quantities to cover the costs of relocating the known services. This provisional sum shall be used to effect payments for the services relocation work carried out by the subcontractor selected by the Contractor in consultation with the Employer for this purpose."

B1204 PROGRAMME OF WORK

Insert the following before the first paragraph:

"A network-based programme in accordance with the precedence method shall be provided showing the various activities in such detail as may be required by the Engineer. The programme shall be updated monthly in accordance with the progress made by the Contractor.

Failure to comply with these requirements will entitle the Engineer to apply a programme based on his own assumptions for the purpose of evaluating claims for extension of time for completion of the works, or for additional compensation."

B1205 WORKMANSHIP AND QUALITY CONTROL

Add the following paragraph to the end of clause 1205:

"Testing for quality control shall be conducted in accordance with the requirements of Section 8200 for Quality Control (Scheme 1)."

B1206 THE SETTING-OUT OF WORK AND PROTECTION OF BEACONS

Delete the first paragraph of clause 1206 in its entirety and replace it with the following:

"The contractor shall comply with all legal provisions in regard to surveying and setting out work."

B1201 PAYMENT

(a) Contract rates

Add the following new paragraph at the end of sub clause B1201(a):

"All rates tendered are to be exclusive of VAT."

B1215 EXTENSION OF TIME RESULTING FROM ABNORMAL RAINFALL

Delete the clause and replace with the following:

There will be no extension of time on this contract due to abnormal rainfall except as provided for below.

Should the Contractor, due to the occurrence of rainfall resulting in his inability to carry out the Works, not meet the rates of progress as per the programme, the Engineer shall determine the number of days lost due to the occurrence of rain, and deduct same from the number of days of penalty which the Contractor shall pay to the Employer due to non-performance in terms of the contract.

Should the occurrence of rain delay the Contractor's rate of progress on work programmed at the end of the contract, the provisions in the above paragraph shall still apply, but the employer shall have the right to discontinue the work in progress on the date that the contract expires, at his sole discretion, or allow the Contractor to complete the outstanding work after expiry date of contract within the period equal to the number of days lost due to rainfall in respect of the activities affected by the rainfall, as determined by the Engineer, without applying the penalty in terms of Clause 5.12 of Contract Data.

During the execution of the Works, The Engineer's Representative will certify a day lost due to abnormal rainfall and adverse weather conditions only if less than 30% of the work force and plant on site could work during that

specific working day.”

B1210 CERTIFICATE OF PRACTICAL COMPLETION OF THE WORKS

Insert the following:

In the fourth line of the first paragraph, delete “Clause 54” and replace with “Clause 5.14”.

Add the following paragraph:

“In addition to the listed specified items of work and regardless of the degree of beneficial use by the Employer, no sections of the works, individually or collectively, shall be considered for practical completion unless the following criteria have also been met:

- i. In the case of partial completion, the estimated cost to complete the outstanding work shall be less than 2 % of the estimated cost to construct the whole section or sections.
- ii. In the case of the whole works, the estimated cost to complete the outstanding work shall be less than 2 % of the tendered value of work plus the cost of any variation or extra work orders, but excluding CPA and VAT.
- iii. It must be possible for the Contractor to complete the written list of outstanding items of work within 28 days of the list having been issued to the Contractor.”

B1219 WATER

The Contractor shall note that the necessary permission must be obtained from the Department of Water Affairs for the abstraction of water from streams and rivers.”

B1224 THE HANDING-OVER OF THE ROAD RESERVE

- (a) The Contractor shall be required to accommodate service owners and other contractors working on the services relocation and maintenance in the execution of their duties.”

B1229 SABS CEMENT SPECIFICATIONS

Add the following paragraphs to the end of clause 1229:

“All cement used on this contract shall comply with SANS 50197-1: Cement Part 1: Composition, specifications and conformity criteria for common cements.

Where reference is made in these Project Specifications or in the GUIDELINES FOR HUMAN SETTLEMENT PLANNING AND DESIGN Standard Specifications to the former SABS cement specifications (e.g., SABS 471, SABS 626, SABS 831, SABS 1491), such reference shall be replaced with the new specification:

- SANS 50197-1: Cement Part 1: Composition, specifications and conformity criteria for common cements.

The blending of cements on site shall not be permitted.”

B1230 DAILY RECORDS

The Contractor shall furnish the Engineer daily with records of work executed by him for each activity. The records shall include information such as description, location, measurement, plant and labour hours, where applicable, and all other information the Engineer may require for the record and measurement purposes.

No separate payment items will be scheduled for the administrative costs incurred by the Contractor to provide the Engineer with the activity sheets and other information that will be required. These costs will be deemed to be inclusive of the rates tendered for the works.

B1231 COMPENSATION FOR OCCUPATIONAL INJURIES AND DISEASES ACT, 1993

All labour employed on the site shall be covered by the Compensation for Occupational Injuries and Diseases Act, 1993, as amended. The Contractor shall pay in full, including the payment of the necessary levies, such amounts as are due in terms of the Act. The manner in which compensation in terms of this Act shall be handled shall be resolved by the Contractor at the commencement of the contract.

vB1232 COMPLIANCE WITH THE ROAD TRAFFIC ACT

When a service necessitates vehicles or plant travelling or working on a public road, the following shall apply:

- i. The vehicles and plant shall be licensed in terms of the National Road Traffic Act 1996 (Act No. 93 of 1996) as amended.
- ii. Every driver and operator of a vehicle or an item of plant shall be in possession of a valid permit in respect of the class of vehicle or item of plant he / she is driving or operating.

The Contractor shall provide, erect and maintain sufficient road signs, barricades, fencing and guarding as may be necessary or required by the Engineer or by any act, regulation or statutory authority in order to minimise the danger and inconvenience caused to vehicle and pedestrian traffic. The Contractor by accepting this contract shall be deemed to have indemnified the Employer and the Engineer against any claims, damages and / or costs that may arise in this regard.

B1233 ENVIRONMENTAL IMPACT CONTROL

In addition to aspects of the design which are intended to avoid or reduce environmental impact, and in addition to normal good construction practice expected of the Contractor, the following requirements shall also be observed:

- (a) The Contractor shall comply with the requirements of Part C: Environmental Management Specification contained in section C3.3 Particular Specifications.
- (b) Clearing shall be limited to the road prism and, where applicable, to detours, which shall be sited in consultation with the Engineer and the local communities.
- (c) No littering by construction workers shall be allowed. A refuse control system shall be established for the collection and removal of refuse to the satisfaction of the Engineer.
- (d) Adequate provision shall be made for temporary toilet requirements in construction areas. Use of the veld for this purpose shall not be allowed under any circumstances.
- (e) Streams, rivers and dams shall be protected from direct or indirect spillage of pollutants, such as refuse, garbage, cement, concrete, sewage, chemicals, fuels, oils, aggregate tailings, wash water, organic materials and bituminous products. In the event of spillage, prompt action shall be taken to clear the affected area. Emergency measures in the event of spillage shall be set out and the responsible person shall be made aware of the required action. The construction of temporary and / or permanent dams shall be done with the necessary approvals from the Department of Water Affairs and Forestry and the Department of Environmental Affairs and Tourism.
- (f) Bituminous and / or other hazardous products shall not be spoiled on site and shall only be disposed of at licensed authorised disposal facilities.
- (g) Provision shall be made to prevent excessive erosion and siltation throughout the Contract and in particular on adjacent land. Should excessive erosion and / or siltation take place outside the road reserve as a direct result of the Contractor's construction activities, the Contractor shall be responsible for making good the erosion / siltation to the satisfaction of the landowner and the Engineer.
- (h) Invader species of plants shall be controlled.

- (i) Dust and noise pollution shall be restricted to acceptable levels.

No separate payment shall be made for observing these requirements as such payment shall be deemed to be included in the amount tendered for item 13.01(c) (The contractor's general obligations: Time-related obligations). Any avoidable non-compliance with these requirements shall be considered sufficient grounds for withholding payment of part or all of the amounts to be paid for the above item in order to pay for the repairs to any damages.

B1234 EXTENSION OF TIME DUE TO DISRUPTION BY BUSINESS FORUMS OR ASSOCIATIONS

There will be no extension of time on this contract due to delays caused by disruptions by business forums or any group of business organisations or associations that are forcefully demanding a stake or participation in this project.

Should the Contractor, due to the disruptions caused by business forums or any group of business organisations or associations, resulting in his inability to carry out the Works, not meet the rates of progress as per the programme, the Engineer shall determine the number of days lost due to the disruptions, and deduct same from the number of days of penalty which the Contractor shall pay to the Employer due to non-performance in terms of the contract.

Should the disruptions delay the Contractor's rate of progress on work programmed at the end of the contract, the provisions in the above paragraph shall still apply, but the employer shall have the right to discontinue the work in progress on the date that the contract expires, at his sole discretion, or allow the Contractor to complete the outstanding work after expiry date of contract within the period equal to the number of days lost due to disruptions in respect of the activities affected by the disruptions, as determined by the Engineer, without applying the penalty in terms of Clause 5.13 of Contract Data.

During the execution of the Works, The Engineer's Representative will certify a day lost due to disruptions only if less than 30% of the work force and plant on site could work during that specific working day.

B1235 MEASUREMENT AND PAYMENT

Item		Unit
B12.02	Relocation and modifications of services	
(a)	Provisional sum for existing services to be relocated and / or protected during construction	provisional sum
(b)	Handling cost and profit in respect of sub-item B12.02(a) above	percentage (%)

Expenditure under this item shall be made in accordance with clause 6.7 of the General Conditions of Contract 2015.

The tendered percentage is a percentage of the amount of expenditure approved by the Engineer under sub-item B12.02(a), and shall include full compensation for the handling costs of the Contractor and the profit in connection with the relocation and / or protection of the relevant services, and is not to exceed 10% of item B12.02(a)

SECTION 1300: CONTRACTOR'S ESTABLISHMENT ON SITE AND GENERAL OBLIGATIONS

B1302 GENERAL REQUIREMENTS

(c) Legal and contractual requirements and responsibility to the public

Add the following paragraph to the end of sub-clause 1302(c):

"The Contractor's general obligations shall also include the training of temporary labour, the management of labour enhanced work and ABEs, the application of the Compensation for Occupational Injuries and Diseases Act, 1993, and compliance with the requirements of Part C: Environmental Management Specification and Part E: OHSA 1993 Safety Specification contained in section C3.3 Particular Specifications."

B1303 PAYMENT

Add the following at the start of clause 1303:

"All references in clause 1303 to the final value of the work increasing or decreasing by "twenty (20) per cent" in terms of the GUIDELINES FOR HUMAN SETTLEMENT PLANNING AND DESIGN general conditions of contract shall be read as increasing or decreasing by "fifteen (15) per cent" in terms of the General Conditions of Contract 2015.

Separate provision has been made in the Schedule of Quantities for the pricing of the Contractor's general obligations with regard to Health and Safety.

Refer to the second sentence of the fourth last paragraph of Clause 1303, page 1300-2 of the GUIDELINES FOR HUMAN SETTLEMENT PLANNING AND DESIGN Standard Specifications and delete the words "from the date on which the contractor has received the letter of acceptance in terms of Clause 12 of the General Conditions of Contract" and replace these words with the following:

"from the Commencement Date in terms of Clause 5.3 of the General Conditions of Contract (2015),".

Add the following at the end of clause 1303:

"The amount payable to the Contractor for time-related obligations arising from extensions of time granted by the Employer, where the Contractor is fairly entitled to such compensation in terms of clause 5 of the General Conditions of Contract 2015, shall be calculated as follows:

- (i) The Contractor shall apply for the extension of time in terms of the number of working days delay incurred.
- (ii) The number of working days extension of time finally granted shall then be added to the contract by the Employer, commencing on the first working day after the day of the original completion date. Special non-working days as defined in the contract data shall not be counted as working days in calculating the extended completion date.
- (iii) The number of calendar days extension of time granted from the original completion date to the extended completion date as calculated in (ii) above shall then be calculated, commencing on the first calendar day after the day of the original completion date.

The following formula shall then be used to calculate the number of months extension of time granted:

$$\begin{array}{l} \text{Number of } \underline{\text{months}} \\ \text{extension of time granted} \end{array} = \left[\left(\text{Number of } \underline{\text{calendar}} \text{ days extension of time granted} / 365 \right) \right] \times 06$$

- (iv) The number of months extension of time granted calculated as in (iii) above shall be the number of additional months measured for payment for time-related obligations under item 13.01(c) as a result of the extensions of time granted.

Note: The number of months extension of time granted calculated as in (iii) above shall also be included in the measurement of any other items scheduled under Sections 1300, 1400, 1500 or elsewhere in the Schedule of Quantities that involve the unit of measurement "month" and that were provided on site for the full duration of the extended period. Where such items were provided for a portion of the extended period only, a pro rata payment shall be made, based on the number of calendar days the item was provided on site after the original completion date divided by the number of calendar days as calculated in (iii) above for the extension of time granted."

Add the following new pay items at the end of clause 1203:

Item	Unit
B12.03 Community Liaison officer (CLO)	
(a) Provisional sum for the services of a locally employed person to perform the duties of a CLO, paid on a monthly basis Handling cost and profit in respect of sub-item	provisional sum
(b) B12.03(a) above	percentage (%)

Expenditure under this item shall be made in accordance with clause 6.10 of the General Conditions of Contract 2015.

The tendered percentage is a percentage of the amount of expenditure approved by the Engineer under sub-item B12.03(a), and shall include full compensation for the handling costs for administration and profit, and is not to exceed 10% of item B12.03(a).

Item	Unit
B13.04 Contact Name Boards N/A	
(a) Contract signboards are to be erected at each site.	lump sum
The tendered rate shall include full compensation for providing and erecting each contract signboard complete (refer to the typical signboard face detail shown in Section C4.2), including for timber poles and fixings, excavation and backfill, and for dismantling and removing the signboard structures and reinstating the signboard area on completion, including all handling costs and profit."	

Item	Unit
B13.05 Contractors General Obligations in terms of Part E of the project specifications	
(a) Fixed obligations	lump sum
(i) Preparation of risk assessments, safe work procedures the project H & S file the H & S plan and any other H & S matters that the Contractor deems necessary	
(ii) Costs of medical certificates and Medical Surveillance Initial (baseline) medical examinations for 20 Persons .	
(b) Time related obligations	month
(i) Updating and amending the risk assessments, the safe work procedures, the project H & S file and the H & S plan, and for full compliance with all H & S matters during the construction of the Works under the contract	

(ii) Provision of full time Construction Health and Safety Officer for duration of contract.

Payment of the lump sums tendered under sub-items **S1.02(2.1)** and the rate per month for sub-item B13.05(b) shall, for the two sub-items together, include full compensation for all the Contractor's costs in respect of compliance with the OHS Act and Construction Regulations.

Item	Unit
B13.06 Supply protective clothing for site staff	
a) Reflective vests	No.
b) Reflective bibs	No.
c) Hard hats	No.
d) Protective foot wear	No.
e) Earplugs	No.
f) Dust masks	No.
g) Gloves for concrete work	No.
h) Two piece conti-suit Orange colour with EPWP on the back written in black to screen print	No.

The tendered price under S1.2, and shall include as part of the Health & Safety Requirement.

EMS.17 Worker Conduct

Code of Conduct for Construction Personnel:

- Do not leave the construction site untidy and strewn with rubbish, which will attract animal pests.
- Do not set fires.
- Do not cause any unnecessary, disturbing noise at the construction camp/site or at any designated worker collection/drop off points.
- Do not drive a construction-related vehicle under the influence of alcohol.
- Do not exceed the national speed limits on public roads or exceed the recommended speed limits on the site.
- Do not drive a vehicle which is generating excessive noise or gaseous pollution (noisy vehicles must be reported and repaired as soon as possible).
- Do not litter along the roadsides, including both the public and private roads.
- Do not pollute any water bodies (whether flowing or not).
- No member of the construction team is allowed to enter the areas outside the construction site.

EMS.18 Traffic Disturbances and Diversions

- Any traffic diversions must be undertaken with the approval of all relevant authorities and in accordance with all relevant legislation.
- Wherever possible, traffic diversion must only take place on existing disturbed areas and remain within the existing road reserve.
- Traffic diversion routes must be rehabilitated after use.

EMS.19 Vegetation

- Only vegetation falling directly on the route must be removed where necessary.
- Alien vegetation within the road reserve must be eradicated, and management measures must be implemented for future control of these species.
- Vegetation that has been removed from large areas (e.g. on traffic diversion routes) during construction must be replaced with indigenous vegetation after construction has been completed.

EMS.20 Waste Management

- All general, non-hazardous waste must be placed in a skip container and disposed of at a registered waste disposal site.
- The contractor is to ensure that the portable toilet facilities at the campsite are properly maintained and in working order.
- No disposal, or leakage, of sewage must occur on or near the site.
- All hazardous waste (e.g. oil, paint, empty lime bags, contaminated wash water, etc) must be stored in leak proof containers and disposed of at a registered hazardous waste disposal site.
- The contents of waste storage containers must, under no circumstances, be emptied to the surrounding area. In general, littering, discarding or burying of any materials is not allowed on site or along the route.
- Adequate waste receptacles must be available at strategic points around the construction camp and site for all domestic refuse and to minimise the occurrence of littering.
- Concrete rubble must be collected and disposed of as directed by the Project Manager.

- Each working area must be cleared of litter and building waste (e.g. rubble, wood, concrete packets etc) on completion of the day's work.
- Any spill around the container(s) should be treated as per Section C11 and C16.

vi3.3 PARTICULAR SPECIFICATIONS

PART D: DAYWORK

This part of the Particular Specifications deals with the provision for daywork in the Schedule of Quantities. Rates for daywork shall be entered in the Schedule of Quantities in accordance with the following specifications.

viiD1. SCOPE

According to Clause 6.5 of the General Conditions of Contract 2015, certain work may be carried out using rates tendered in the daywork schedule. A schedule of personnel, plant and equipment which may be necessary to perform work on a daywork basis is included in the Schedule of Quantities. The quantities used in the Schedule of Quantities are for tender evaluation purposes only and the use or not of these items shall not constitute a variation in terms of Clause 6.3 of the General Conditions of Contract 2015.

No work will be paid for as daywork without the written instruction or approval of the Engineer.

viiiD2. TYPE OF WORK

The Engineer may order daywork in certain cases where it is necessary to vary or to extend the works due to new or unforeseen circumstances to such an extent that the tendered rates for specific items of work are no longer applicable, or where no suitable combination of tendered rates can be used to pay for such work.

As a general rule, applicable rates for additional work items will be agreed between the Contractor and the Engineer. Daywork will only be used in exceptional circumstances.

ixD3. MATERIALS

Materials for use in works carried out under daywork shall be purchased by the Contractor who shall also arrange for delivery to site, and shall be responsible for any other requirements associated with specific materials.

Materials shall be paid for using the method described in C2.1, 'Pricing Instructions'. No contract price adjustment will be applicable to materials.

The Contractor shall submit proof of ownership for any materials used in daywork with his daywork claim to the Engineer. Further, if specific materials are required for daywork, quotations will be called for as per Clause 6.5 of the General Conditions of Contract 2015.

D4. CONSTRUCTION PLANT HIRE

Where daywork is ordered, the tendered rates for plant hire in Section C10.01 of the Schedule of Quantities shall be used in calculating the payment due for any plant required to execute the daywork. If no rate is included in the Schedule of Quantities for a particular piece of equipment, and where no other rate or combination of rates would provide suitable compensation, then the daywork method of payment described in Clause 6.5 of the General Conditions of Contract 2015 will be used.

The tendered rates for each item of constructional plant shall include for all operating costs associated with the said item of plant. Such costs are deemed to include fuel, re-fuelling costs, lubrication and routine servicing / maintenance, breakdowns and spares, all overhead costs, site management costs and administration costs. The tendered rates shall also include the plant operator and the general supervision of the plant while it is engaged in the daywork.

x
xi

xiiD5. SALARIES AND WAGES OF WORKMEN

The salaries and wages of workmen executing daywork shall be paid for using the tendered rates in the Schedule

of Quantities. The tendered rates shall include for all costs associated with the employment of personnel, including salaries, wages, allowances, workmen's compensation, medical aid and pension contributions, government levies and taxes, training costs and any costs associated with living on the site. The tendered rates shall also include for the transportation of the workmen to the site of the daywork.

All overhead costs, administration costs, site management costs and the Contractor's profit are deemed to be covered by the daywork rates and no additions or mark ups will be made to the tendered rates.

The tendered rates shall also include any hand tools normally associated with the workmen's job description e.g. picks, shovels, hammers, saws, spirit levels, etc. The tendered rate for labourers shall also include for the casual supervision by a gang boss or foreman. Only when specifically called for by the Engineer, will payment be made for the use of a gang boss or foreman supervising on a continuous basis.

xiiiD6. MEASUREMENT AND PAYMENT

The following principles shall also apply to the measurement and payment of daywork.

The unit of measurement for plant shall be the number of vibroclock hours worked and each item of plant shall be fitted with a vibroclock, the cost of which shall be included in the rates. Excessive non-productive time when the engine is idling will not be paid for. Where there is ambiguity between the flywheel horsepower and mass of the machine, the flywheel horsepower shall govern the measurement category. Where width and mass are specified, mass shall govern the measurement category.

The Contractor's attention is drawn to the requirements of Clauses 6.5 of the General Conditions of Contract 2015 with regard to the submission of daywork claims.

xivC3.3 PARTICULAR SPECIFICATIONS

PART E: OHSA 1993 HEALTH AND SAFETY SPECIFICATION

E1. SCOPE

This specification covers the health and safety requirements to be met by the Contractor to ensure a continued safe and healthy environment for all workers, employees and subcontractors under his control and for all other persons entering the site of works.

This specification shall be read with the Occupational Health and Safety Act (Act No 85 and amendment Act No 181) 1993, and the corresponding Construction Regulations 2014, and all other safety codes and specifications referred to in the said Construction Regulations.

In terms of the OHSA Agreement in Section C1.5 of the Contract document, the status of the Contractor as mandatarly to the Employer (client) is that of an employer in his own right, responsible to comply with all provisions of OHSA 1993 and the Construction Regulations 2014.

This specification and the Contractor's own Health and Safety Plan as well as the Construction Regulations 2014, shall be displayed on site or made available for inspection by all workers, employees, inspectors and any other persons entering the site of works.

The following aspects of this project carry the risk of possible injuries,

- People becoming complacent and not keeping an eye on the operation being conducted
- People standing out of view of the driver of a construction machine
- People "catching" a lift on the machine and falling under the machine after it hits a hump
- Trying to do a task with the machine for which it is not designed
- Poor visibility while performing tasks that generate excessive dust
- Failure to provide the pedestrians and traffic a safe passage away from the plant processing the layer works and surfacing operations.
- Risks of not wearing proper safety equipment when working with bitumen and cement.
- Failure to provide means of access for emergency vehicles
- Risks related to people smoking near potentially harmful gasses
- Failure to perform visual inspections on all surfacing equipment
- Non-conformance to specifications with regards to fitting all construction vehicles with reverse alarms
- Operation and maintenance on the site of heavy civil engineering plant such as compaction equipment, rock breaking plant, water pumps, concrete mixers, generators, etc.
- Use on the site of power tools and hand tools.
- Handling of materials such as scaffolding, formwork, timber planks, steel wire, reinforcement, cement bags, concrete materials and hand stone.
- Storage and handling of flammable materials such as fuels, oils, adhesives, and painting and cleaning products including bituminous paint.
- Presence of open excavations for the manholes and storm water pipe trenches.
- Lifting and lowering of concrete pipes

Additional risks may arise from specific methods of construction selected by the Contractor which are not necessarily covered in the above.

E2. DEFINITIONS

For the purpose of this contract the following shall apply:

- (a) **“Employer”** where used in the contract documents and in this specification, means the Employer as defined in the General Conditions of Contract 2015 and it shall have the exact same meaning as **“client”** as defined in the Construction Regulations 2014. **“Employer”** and **“client”** are therefore interchangeable and shall be read in the context of the relevant document.
- (b) **“Contractor”** wherever used in the contract documents and in this specification, shall have the same meaning as **“Contractor”** as defined in the General Conditions of Contract 2015.

In this specification the terms **“principal contractor”** and **“contractor”** are replaced with **“Contractor”** and **“subcontractor”** respectively.

For the purpose of this contract the **Contractor** will, in terms of OHSA 1993, be the mandatary, without derogating from his status as an employer in his own right.

- (c) **“Engineer”** where used in this specification, means the Engineer as defined in the General Conditions of Contract 2015. In terms of the Construction Regulations the Engineer may act as agent on behalf of the Employer (the client as defined in the Construction Regulations).

E3. TENDERS

This Health and Safety Specification forms an integral part of the Contract and Tenderers are required to use it during the tender phase for pricing the preparation of a project specific Health and Safety Plan prior to commencing any work and for pricing the costs of ensuring compliance thereto during construction. Tenderers must forward a copy of this Specification to all other persons or organisations that may be submitting prices to the Tenderer during the tender stage to enable them to include the cost of preparing their own Health and Safety Plan, relevant to their particular operation, and for compliance with the Health and Safety requirements during construction. Payment items are included in the ‘Schedule of Quantities’ for compliance with the ‘Occupational Health and Safety Act’ and with this Specification.

Tenderers are required to complete Form J, ‘Contractor’s Health and Safety Declaration’ of T2.2, ‘Returnable Schedules required for Tender Evaluation Purposes’.

Failure to submit the foregoing with his tender and/or to provide realistic rates for relevant payment items, will lead to the conclusion that the Contractor will not be able to carry out the work under the contract safely and in accordance with the Construction Regulations.

E4. NOTIFICATION OF COMMENCEMENT OF CONSTRUCTION WORK

After award of the contract, but before commencement of construction work, the Contractor shall, in terms of Regulation 3, notify the Provincial Director of the Department of Labour in writing if the following work is involved:

The notification must be done in the form of the pro forma included as Annexure A to this Specification. A copy of the notification form must be kept on site, available for inspection by inspectors, Employer, Engineer, employees and persons on site.

E5. HEALTH AND SAFETY PLAN

Before commencement of any construction work, the Contractor shall prepare a project specific Health and Safety Plan to comply with the requirements of Construction Regulation 4(1)(a) and in compliance with this Health and Safety Specification. This must include a risk assessment performed and recorded in writing by a competent person (refer to Regulation 7 of the Construction

Regulations 2014).

The risk assessment shall identify and evaluate the risks and hazards that may be expected during the execution of the work under the contract, and it shall include a documented plan of safe work procedures to mitigate, reduce or control the risks and hazards identified.

The Health and Safety Plan shall be available on site for inspection by inspectors, Employer, Engineer, subcontractors, employees, trade unions and health and safety committee members, and must be monitored and reviewed periodically by the Contractor.

E6. APPOINTMENT OF EMPLOYEES AND SUBCONTRACTORS

E6.1 Health and Safety Plan

The Contractor shall appoint in writing his employees and any subcontractors to be employed on the contract, and he shall provide them with a copy of his documented Health and Safety Plan, or relevant sections thereof. The Contractor shall ensure that all subcontractors and employees are committed to the implementation of his Safety Plan.

E6.2 Health and safety induction training

The Contractor shall ensure that all employees under his control, including subcontractors and their employees, undergo a health and safety induction training course by a competent person before commencement of construction work. No visitor or other person shall be allowed or permitted to enter the site of the works unless such person has undergone health and safety training pertaining to hazards prevalent on site.

The Contractor shall ensure that every employee on site shall at all times be in possession of proof of the health and safety induction training issued by a competent person prior to commencement of construction work.

E7. APPOINTMENT OF SAFETY PERSONNEL

E7.1 Construction Supervisor

The Contractor shall appoint a full-time **Construction Supervisor** with the duty of supervising the performance of the Drilling and Equipping of borehole

He may also have to appoint one or more competent employees to assist the construction supervisor where justified by the scope and complexity of the works.

E7.2 Construction safety officer

Taking into consideration the size of the project and the hazards or dangers that can be expected, the Contractor shall appoint in writing a full-time or part-time **Construction Safety Officer** if so decided by the Inspector of the Department of Labour. The Safety Officer shall have the necessary competence and resources to perform his duties diligently.

Provision shall be made by the Contractor in his rates, to cover the cost of this dedicated construction safety officer appointed after award of the contract.

E7.3 Health and safety representatives

In terms of **Sections 17 and 18 of the Act (OHSA 1993)** the Contractor, being the Employer in terms of the Act for the execution of the contract, shall appoint a **health and safety representative** whenever he has more than 20 employees in his employment on the site of the works. The health and safety representative must be selected from employees who are employed in a full-time capacity at a specific workplace.

The number of health and safety representatives for a workplace shall be at least one for every 50 employees.

The function of health and safety representative(s) will be to review the effectiveness of health and safety measures, to identify potential hazards and major incidents, to examine causes of incidents (in collaboration with his employer, the Contractor), to investigate complaints by employees relating to health and safety at work, to make representations to the employer (Contractor) or inspector on general matters affecting the health and safety of employees, to inspect the workplace, plant, machinery, etc. on a regular basis, to participate in consultations with inspectors and to attend meetings of the health and safety committee.

E7.4 Health and safety committee

In terms of Section **19 of the Act (OHSA 1993)**, the Contractor (as employer) shall establish one or more **health and safety committee(s)** where there are two or more health and safety representatives at a workplace. The persons selected by the Contractor to serve on the committee shall be designated in writing.

The function of the health and safety committee shall be to hold meetings at regular intervals but at least once every three months, to review the health and safety measures on the contract, to discuss incidents related to health and safety with the Contractor and the inspector, to make recommendations regarding health and safety to the Contractor and to keep record of recommendations and reports made by the committee.

E7.5 Competent persons

In accordance with the Construction Regulations the Contractor has to appoint in writing **competent persons** responsible for supervising construction work in each of the following work situations that may be expected on the site of the works.

- (a) Risk assessment and induction training as described in Regulation 7 of the Construction Regulations;
- (b) Fall protection as described in Regulation 8;
- (c) Formwork and support work as described in Regulation 10;
- (d) Excavation work as described in Regulation 11;
- (e) Cranes as described in Regulation 20;
- (f) Control of all temporary electrical installations on the construction site as described in Regulation 22;

A competent person may be appointed for more than one part of the construction work with the understanding that the person must be suitably qualified and able to supervise at the same time the construction work on all the work situations for which he has been appointed.

The appointment of competent persons to supervise parts of the construction work does not relieve the Contractor from any of his responsibilities to comply with **all** requirements of the Construction Regulations.

E8. RECORDS AND REGISTERS

In accordance with the Construction Regulations the Contractor is bound to keep records and registers related to health and safety on site for periodic inspection by inspectors, the Engineer, the Employer, trade union officials, subcontractors and employees. The following records and registers must be kept on site and shall be available for inspection at all times.

- (a) A copy of the OHSA 1993 Construction Regulations 2014;
- (b) A copy of this Health and Safety Specification;

- (c) A copy of the Contractor's Health and Safety Plan (Regulation 4);
- (d) A copy of the Notification of Construction Work (Regulation 3);
- (e) A health and safety file in terms of Regulation 5(7) with inputs by the Construction Safety Officer (Regulation 6(7));
- (f) A copy of the risk assessment described in Regulation 7;
- (g) A fall protection plan and the corresponding records of evaluation and training of employees working from elevated positions as described in Regulation 8;
- (h) A warning notice must be displayed in a conspicuous manner when and wherever an explosive powered tool is used (Regulation 19(2));

E9. CONTRACTOR'S RESPONSIBILITIES

For this contract the Contractor will be the mandatory of the Employer (Client), as defined in the Act (OHSA 1993), which means that the Contractor has the status of employer in his own right in respect of the contract. The Contractor is therefore responsible for all the duties and obligations of an employer as set out in the Act (OHSA 1993) and the Construction Regulations 2014.

Before commencement of work under the contract, the Contractor shall enter into an agreement with the Employer (Client) in terms of C1.5 'Agreement in terms of Section 37(2) of the Occupational Health and Safety Act No. 85 of 1993', to confirm his status as mandatory (employer) for the contract under consideration.

The Contractor is advised in his own interest to make a careful study of the Act and the Construction Regulations as ignorance of the Act and the Regulations will not be accepted in any proceedings related to non-conformance to the Act and the Regulations.

E10. MEASUREMENT AND PAYMENT

E10.1 Principles

It is a condition of this contract that Contractors who submit tenders for this contract shall make provision in their tenders for the cost of all health and safety measures required during the construction process.

(a) Safety personnel

The Construction Supervisor, the Construction Safety Officer, Health and Safety Representatives, Health and Safety Committee and Competent Persons referred to in clause E7 paragraphs E7.1 to E7.5 above shall be members of the Contractor's personnel, and no additional payment will be made for the appointment of such safety personnel.

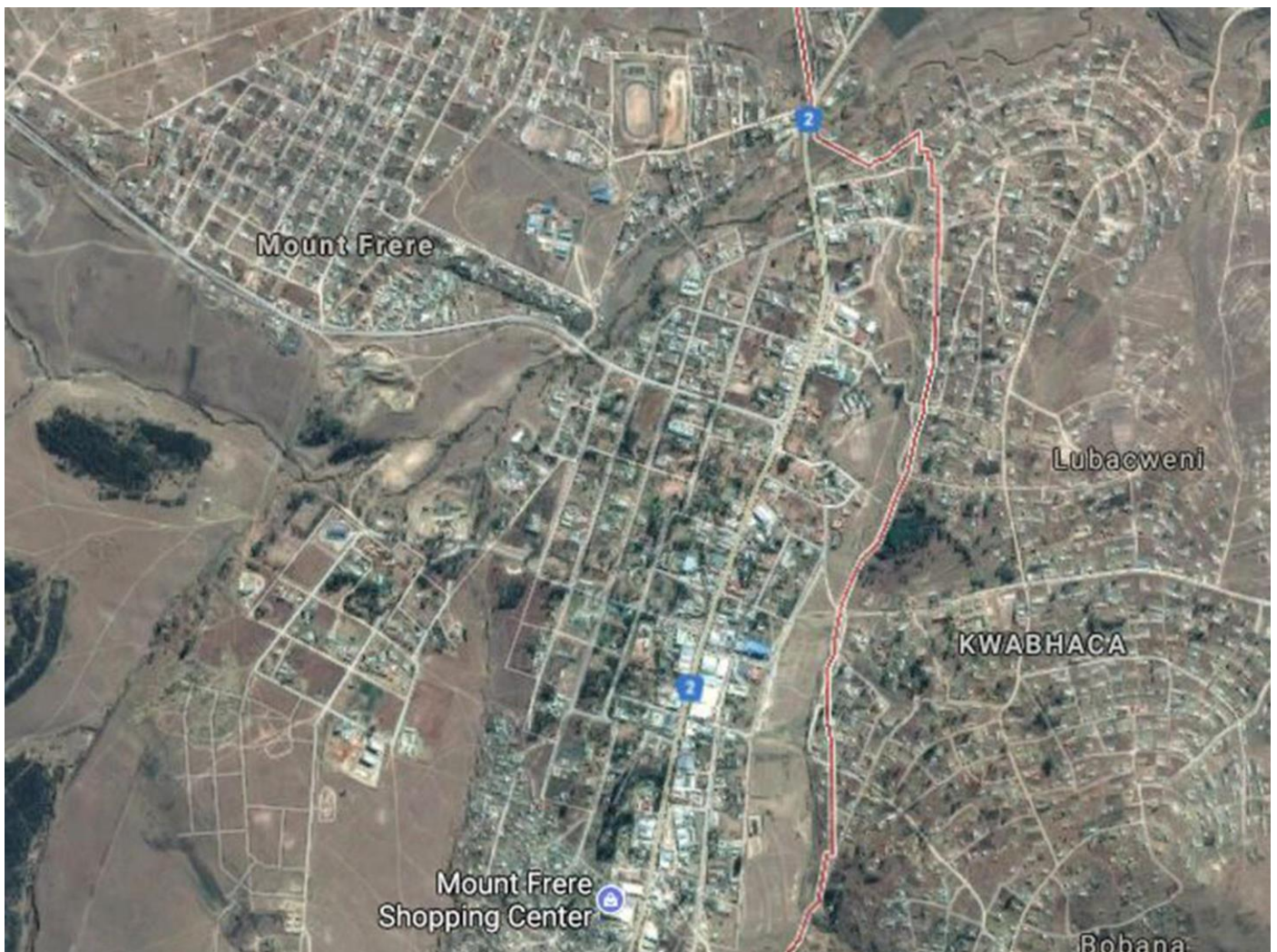
(b) Records and Registers

The keeping of health and safety-related records and registers as described in clause E8 above is regarded as a normal duty of the Contractor for which payment is deemed to be included in the Contractor's tendered rates and prices, and for which no additional payment will be considered except to the extent provided in item B13.06 of the Schedule of Quantities.

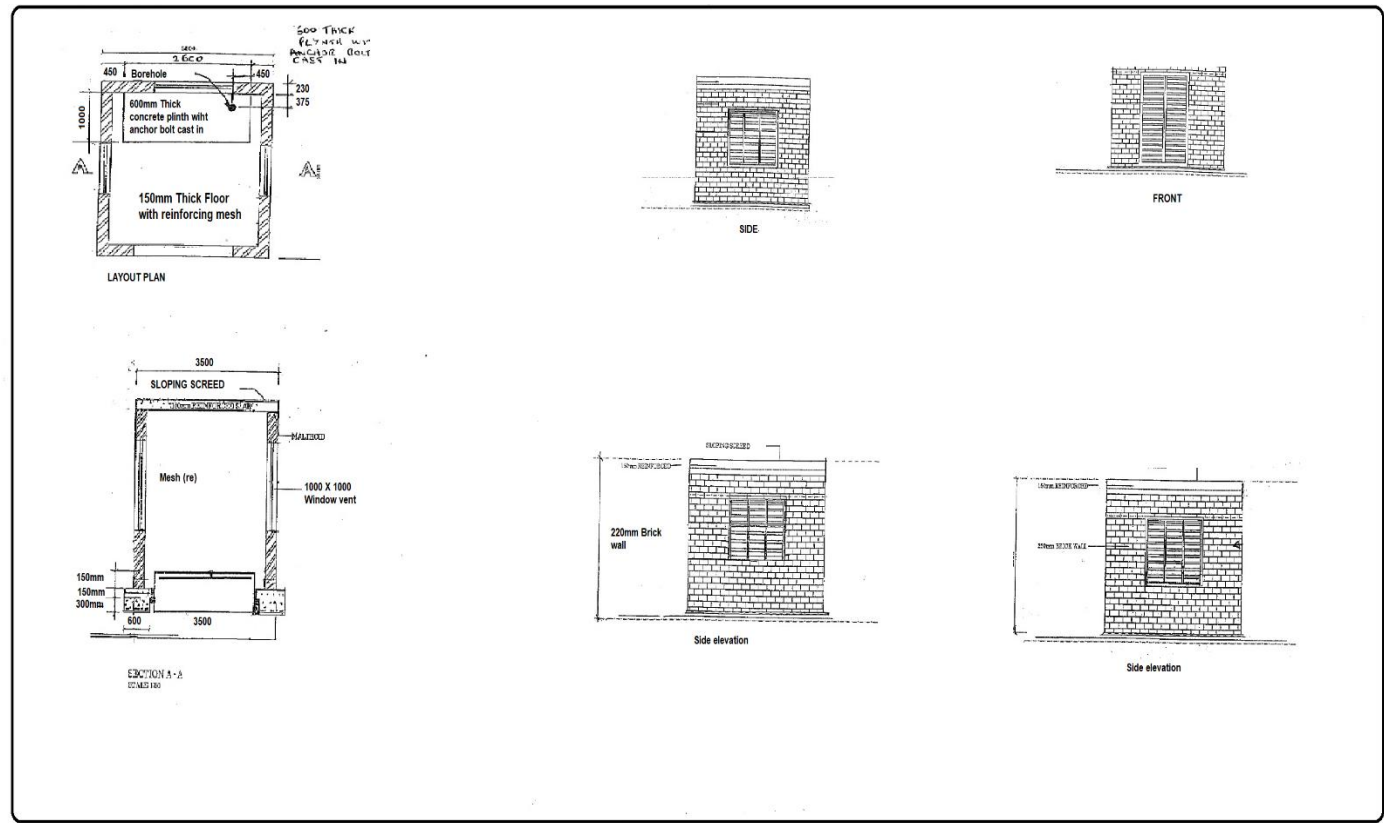
C4: SITE INFORMATION

<u>TABLE OF CONTENTS</u>	Page
C4.1 LOCALITY PLANS	C66
C4.2 DRAWINGS	C68

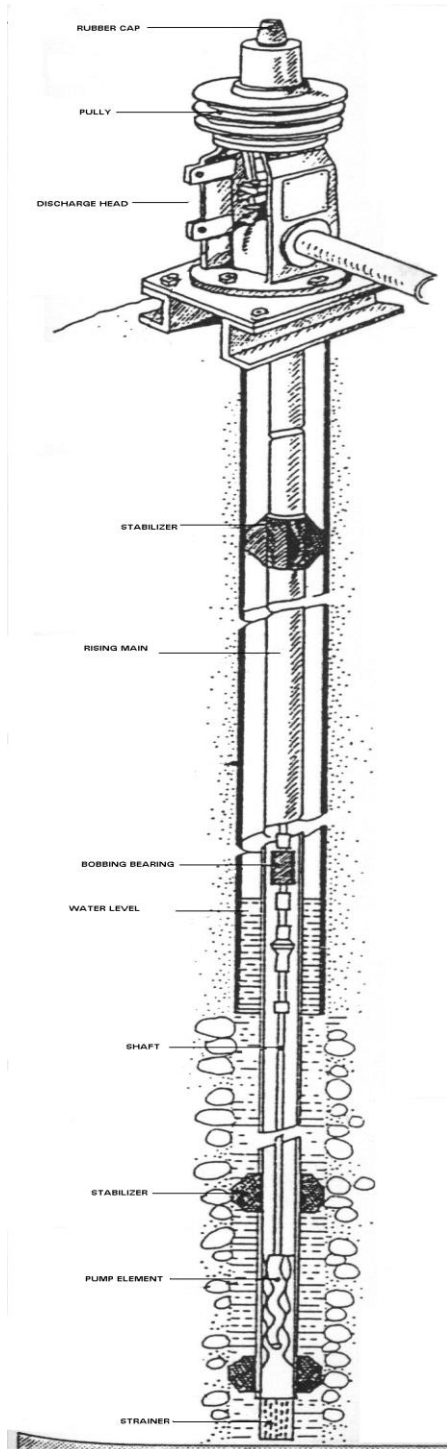
C4.1 LOCALITY PLANS



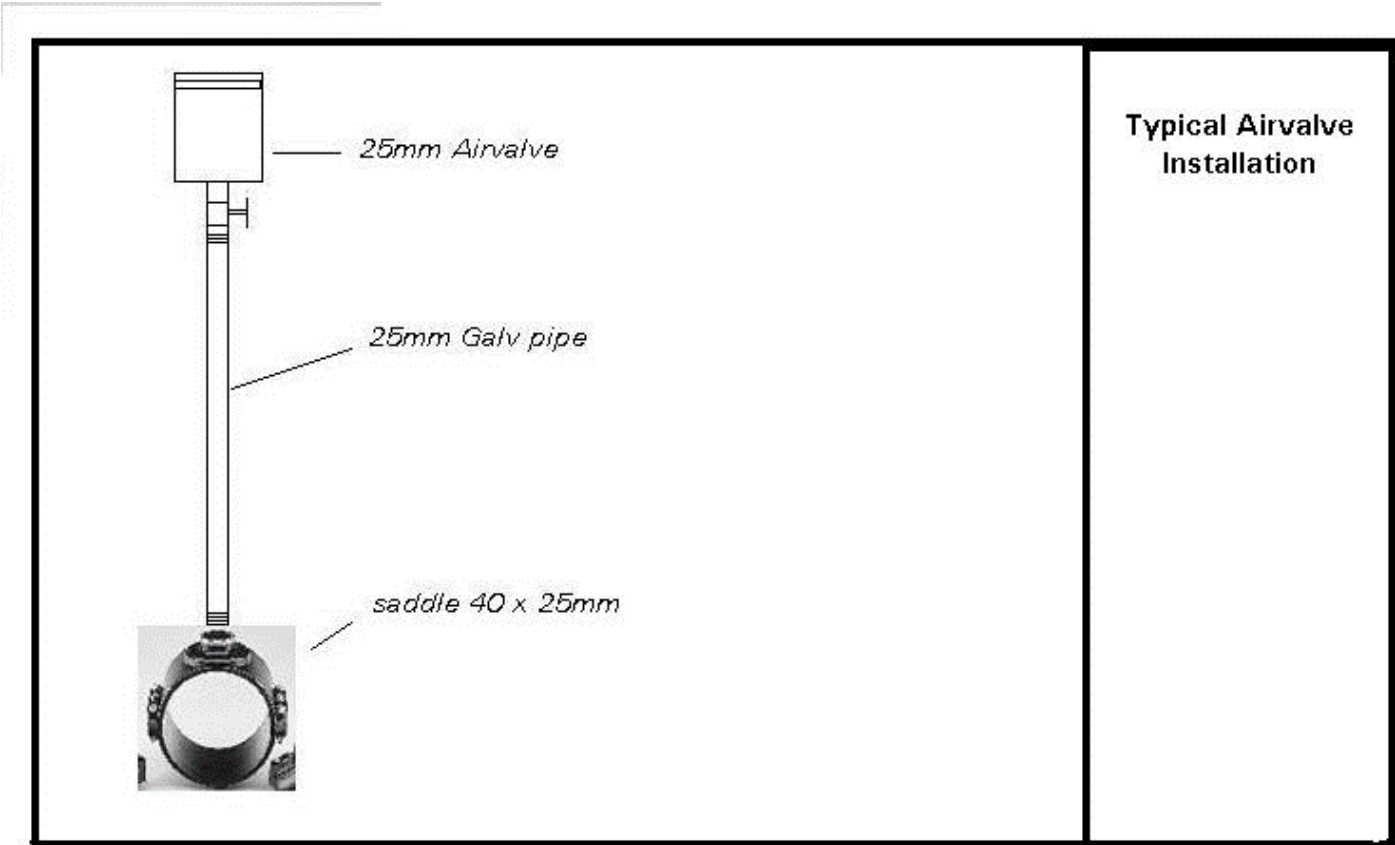
C4.3 DRAWINGS



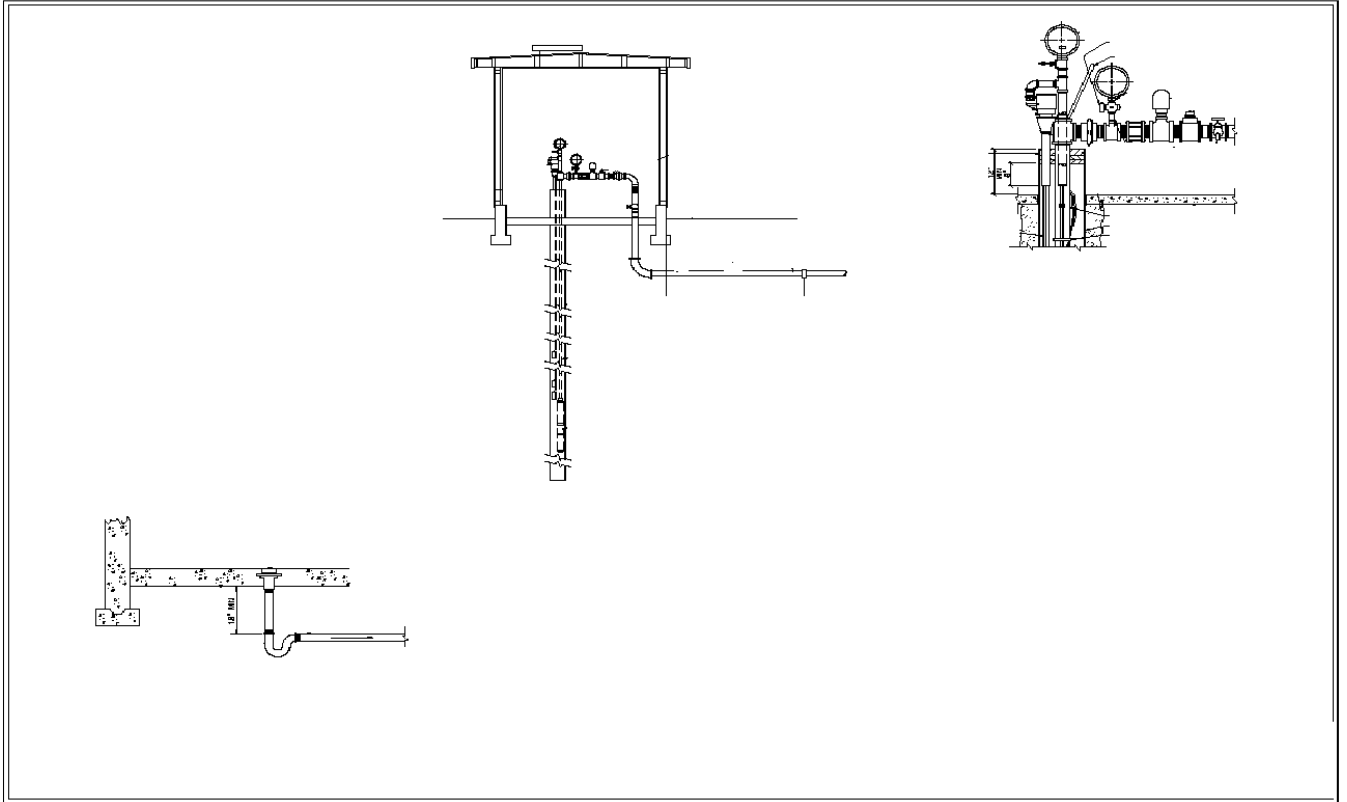
PUMP HOUSE DETAILS:



ORBIT PUMP INSTALLATION:



AIRVALVE INSTALLATION:



Borehole pump installation with pump safety :Pump safety detail as per standard Borehole pump installation: