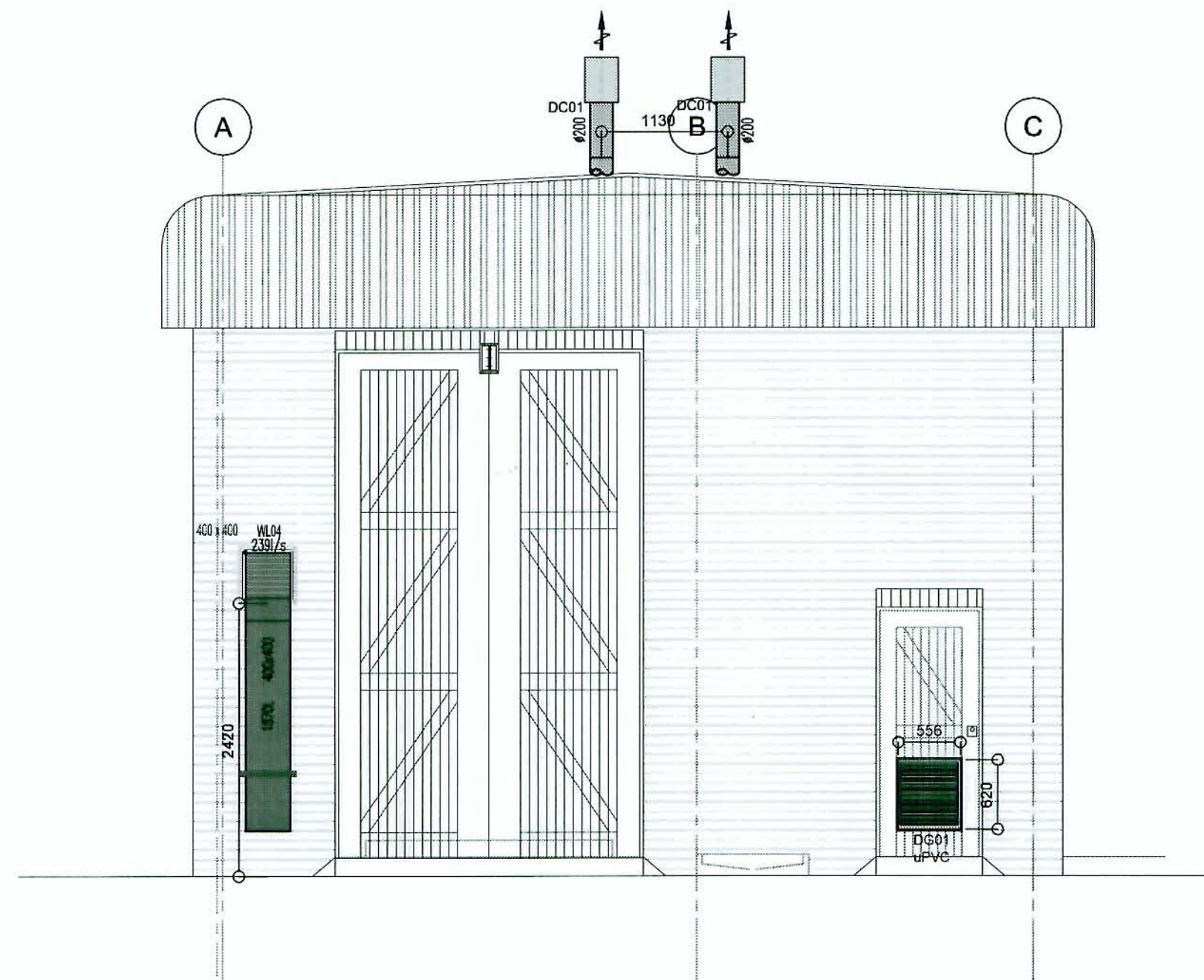
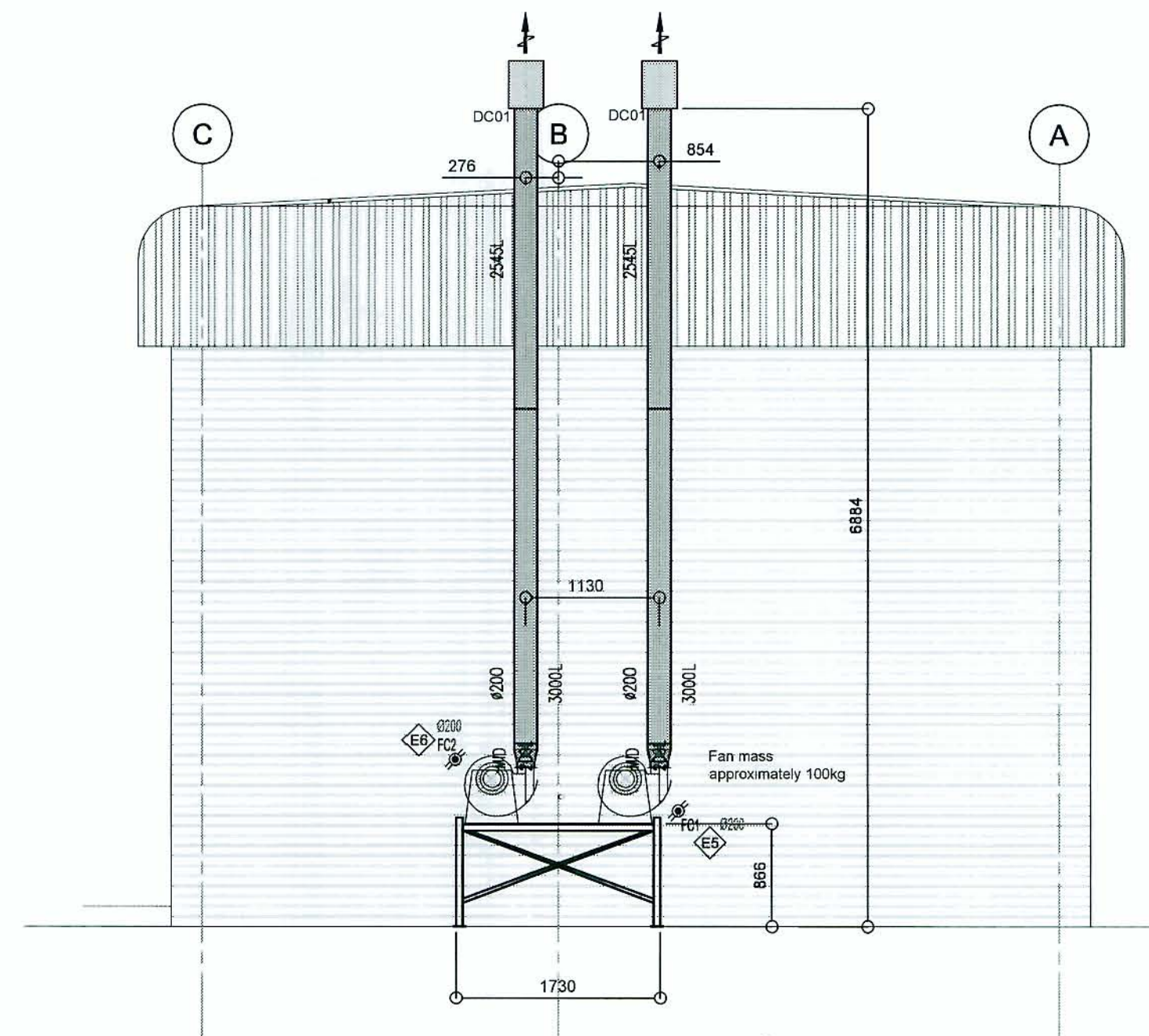


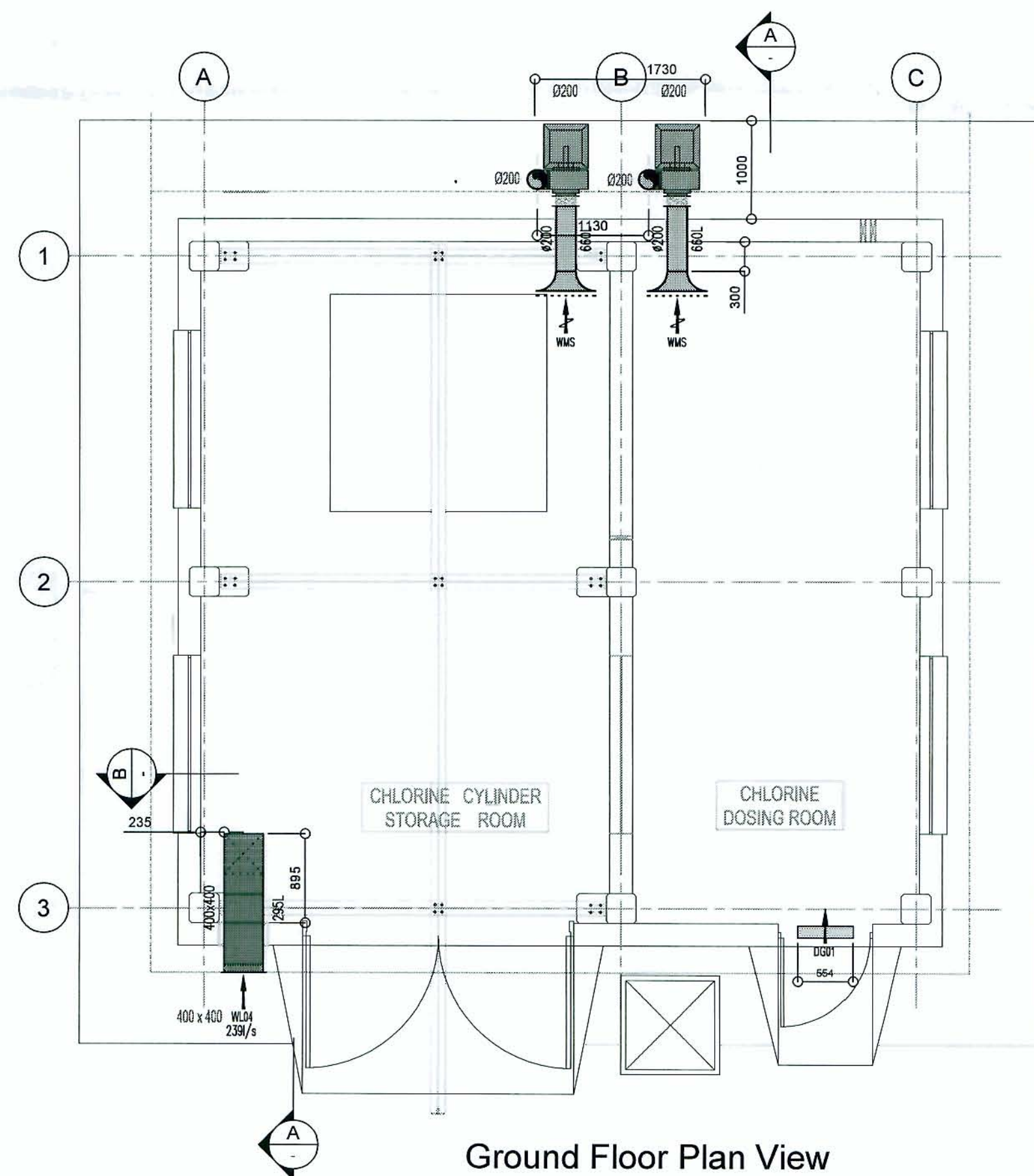
Sectional View
Scale 1:50



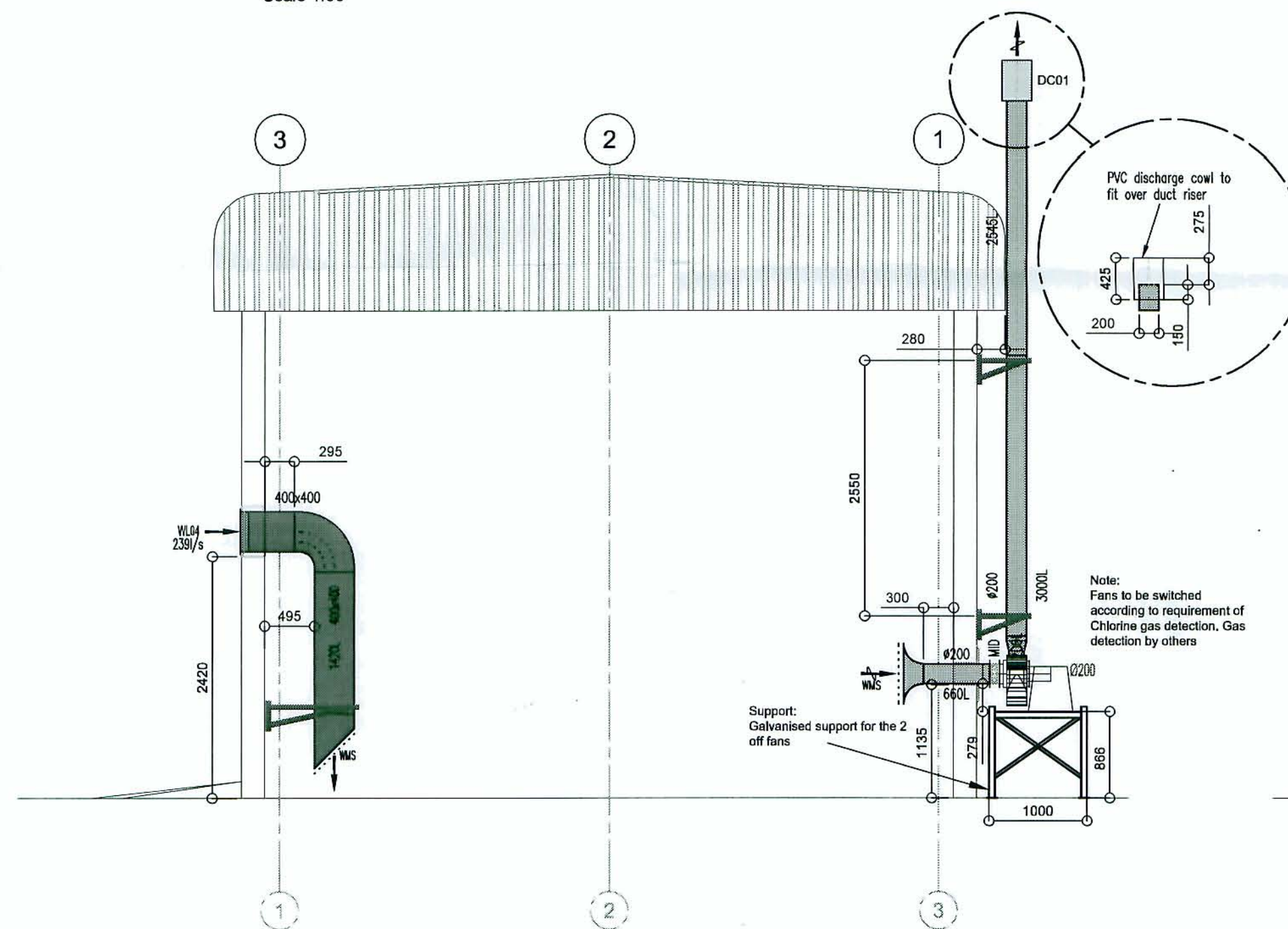
Elevational View with broken Section
Scale 1:50



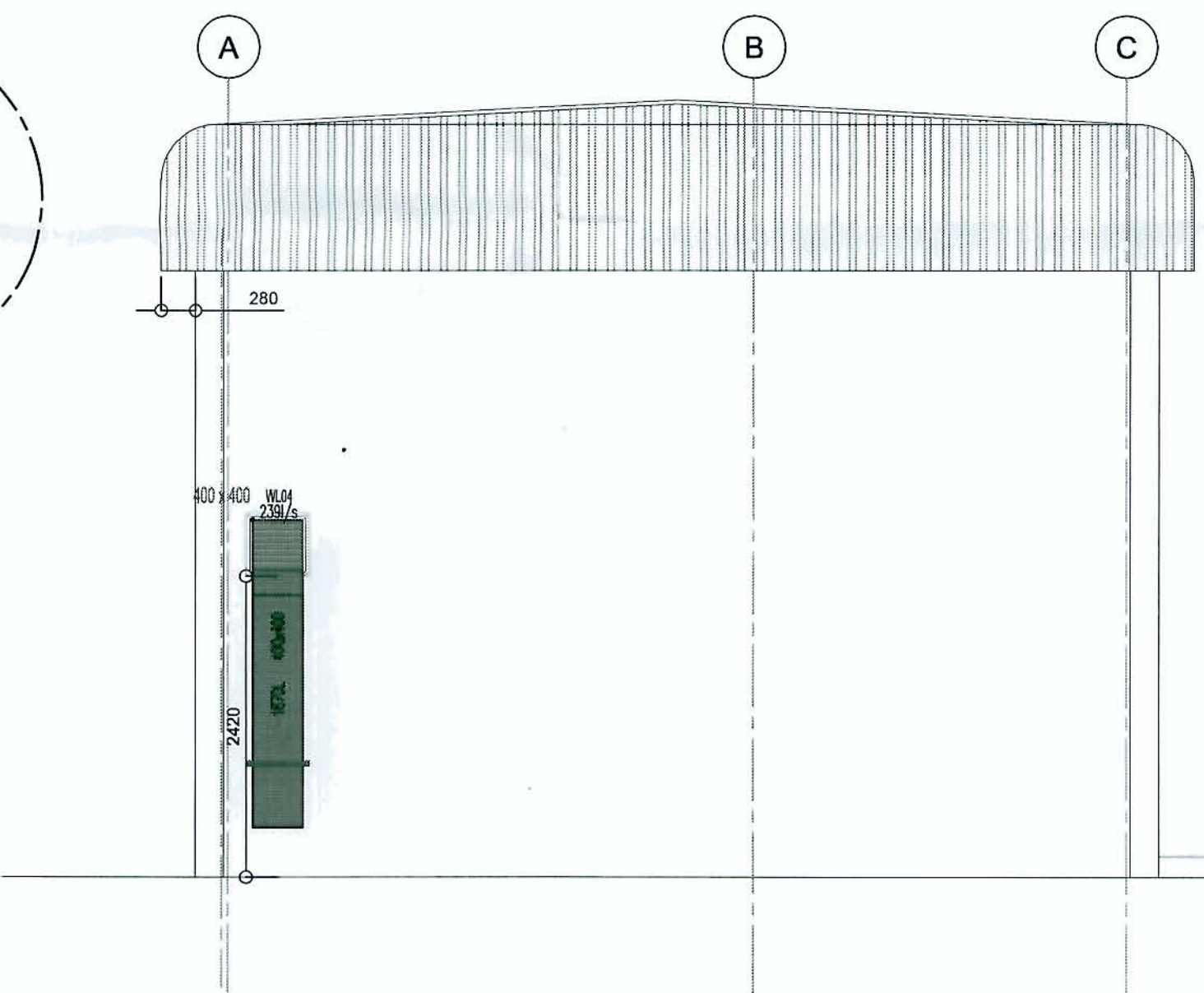
Elevational View
Scale 1:50



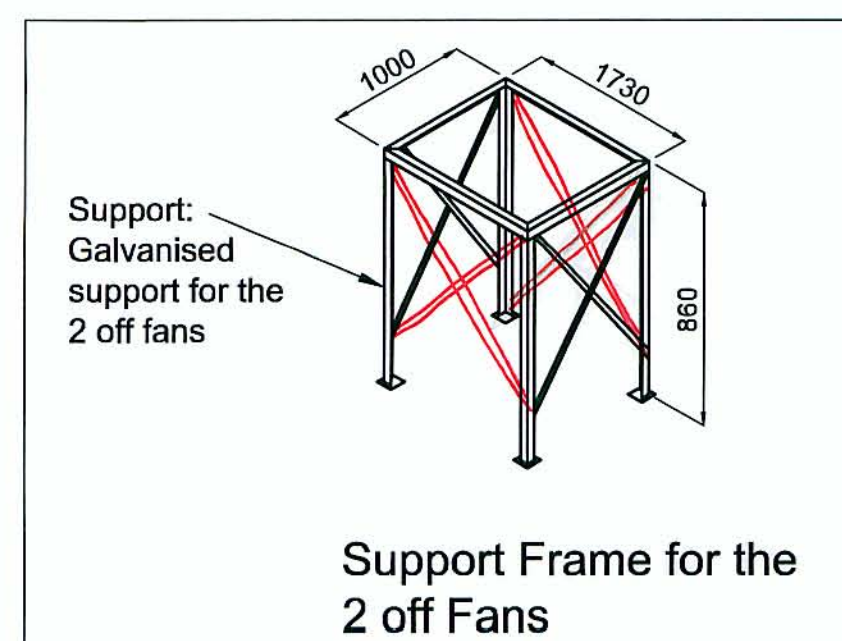
Ground Floor Plan View
Scale 1:50



Section A-A
Scale 1:50



Section B-B
Scale 1:50



Support Frame for the
2 off Fans

Legend:

HVAC:

ALL DUCTING MATERIAL TO BE UPVC DUE TO CORROSIVE CHLORINE
GAS. GALVANIZED SHEET METAL WILL NOT BE ACCEPTED

Fresh Air Ducting
Exhaust Air Ducting

SPOORMAKER & PARTNERS INC. CONSULTING ENGINEERS		REVIEW RESULT		Yes	No
Signed <i>By: Mr. G. L. L. L. L.</i> <i>Date: 26/5/2012</i> Reviewed <i>By: Mr. G. L. L. L. L.</i> <i>Date: 26/5/2012</i> Comments: This has been reviewed only for general performance with design concept. The design is not a final design. It is a preliminary design. It is					

NOTE:

TERMINALS/GRILLES

- 1) All terminals/grilles in walls - NCS G08 Extra Dark sea Grey.
- 2) All terminals/grilles in ceilings - NCS G80 Cloud White.
- 3) All terminals/grilles mounted on ducts - Natural Anodised Aluminium

DUCT SUPPORTS

- 1) All threaded rods to be galvanised (i.e. standard)
- 2) All angle iron support brackets or angle iron supports that are painted with black primer should be painted sea grey, irrespective if the duct that they support is black steel (painted sea grey) or normal galvanised duct.

AIR HANDLING UNITS

- 1) Units to rest on Tico Pads or equally approved.

DUCTING

- 1) Exposed ducting not to be insulated.

RECEIVED

2012/02/16

Transmittal 057-CHL

NOTE:
AWAITING KEY PLAN
FROM ARCHITECT

Key Plan
Scale 1:500

NOTE:

1. STARTER ISOLATOR TO BE PROVIDED BY ESKOM.
2. ALL DUCTING MATERIAL TO BE UPVC DUE TO CORROSIVE CHLORINE GAS. GALVANIZED SHEET METAL WILL NOT BE ACCEPTED.

NOTES:

DO NOT SCALE THIS DRAWING. WORK ONLY TO FIGURED DIMENSIONS.

FOR ALL RELEVANT NOTES, REFER TO MECHANICAL AND ELECTRICAL ENGINEERING PERFORMANCE SPECIFICATION

ANY DISCREPANCIES ARE TO BE REPORTED TO ENVIOWARE CONSTRUCTION IMMEDIATELY

THIS DRAWING IS TO BE READ IN CONJUNCTION WITH ALL OTHER RELEVANT ENGINEERS, ARCHITECTS AND SUB-CONTRACTORS DRAWINGS AND DETAILS.

NOTE:

FOR LEGEND INFORMATION SEE
DRAWING DWG-ENV-ME-WTP-015 OR
FOR FULL SCHEDULE AND LEGEND SEE
DRAWING DWG-ENV-ME-WTP-015

CONSTRUCTION

No.	DATE	DESCRIPTION	By
02	09/02/2012	SUPPORT FOR FAN INDICATED, NO PLINTH BUILT. ISSUED FOR CONSTRUCTION	GB
01	10/10/2011	UPDATED TO CONSULTANT REDLINE RE-ISSUED FOR APPROVAL	GB
00	22/07/2011	ISSUED FIRST FIX FOR APPROVAL	GB

REVISIONS

COPYRIGHT © ENVIOWARE CONSTRUCTION 2001

e AIR CONDITIONING AND REFRIGERATION
ENGINEERING CONTRACTORS
P.O. Box 783564
SANITON 2146
GAUTENG
SOUTH AFRICA
Telephone 011 315-1324
011 315-1382
011 315-1387
Fax 011 315-1385
e-mail: company@envioware.co.za

ENVIOWARE CONSTRUCTION

CLIENT

MEDUPI POWER STATION

BUILDING

CHLORINATION BUILDING

DRAWING TITLE

HVAC LAYOUT

DRAWN

GB

CHECKED

AC

DATE

19/07/2011

DRAWING NUMBER

DWG-ENV-ME-CHL-001

REVISION

02

REF CONSU. 08073-T-40F-CHL
REF ARCHT. 0.84/3327

REV. No. 0
REV. No. -

ENV REF No: 1650