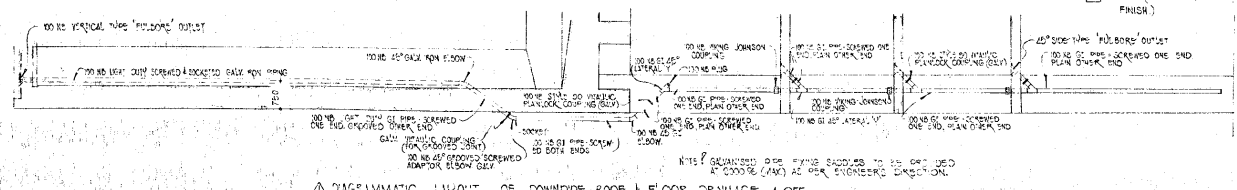
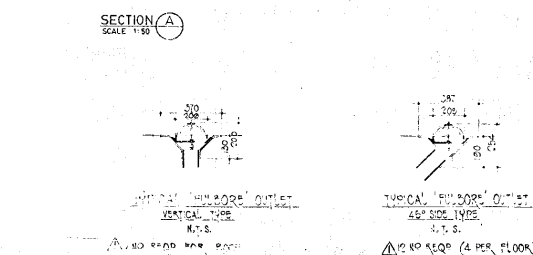


- NOTES:
1. FOR GENERAL NOTES REFER TO DRS 001/002
  2. PRECAST CONCRETE SLAB UNITS TO BE DESIGNED AND ERECTED TO COMPLY WITH DETAILS
  3. PRECAST BEAM TO KID DETAILS SHOWN ON DRS 001/002 (SEE/)
  4. CAST-IN PIPES & DUCTS TO BE SUPPLIED TO COMPLY WITH LAC STEINMULLER
  5. SPECIAL PRECAST SUPPORT SHUTTERING PLANS TO BE CONSTRUCTED AT GROUND LEVEL COMPLETE WITH CAST IN PIPES & DUCTS AND LIFTED INTO POSITION READY FOR SLAB POUR
  6. CONCRETE 1:20 MPA CAST IN SITS SLAB TO FALL (WOOD PLANT FINISH)



DATE	BY	REVISION	DESCRIPTION
24-2-50	AKAR	1	REVISIONS & DIMENSIONS CAST IN TERS
24-2-50	AKAR	2	REVISIONS & DIMENSIONS CAST IN TERS
24-2-50	AKAR	3	REVISIONS & DIMENSIONS CAST IN TERS
24-2-50	AKAR	4	REVISIONS & DIMENSIONS CAST IN TERS
24-2-50	AKAR	5	REVISIONS & DIMENSIONS CAST IN TERS
24-2-50	AKAR	6	REVISIONS & DIMENSIONS CAST IN TERS
24-2-50	AKAR	7	REVISIONS & DIMENSIONS CAST IN TERS
24-2-50	AKAR	8	REVISIONS & DIMENSIONS CAST IN TERS
24-2-50	AKAR	9	REVISIONS & DIMENSIONS CAST IN TERS
24-2-50	AKAR	10	REVISIONS & DIMENSIONS CAST IN TERS

**KEEVE STEYN & VENNOTE INC.**  
Kustgebende Ingenieurs en Projektant  
Consulting Engineers & Project Managers  
Johannesburg tel. 28-5733 Durban tel. 6-1545

**LEGEND**

CONCRETE DETAILS TO ROOF SLAB, PRECAST  
DOOR BEAMS AND SUPPORT BEAMS FOR DUCTS  
REVISIONS  
REV. 1/1/50

APPROVED: [Signature]  
DATE: 1/1/50