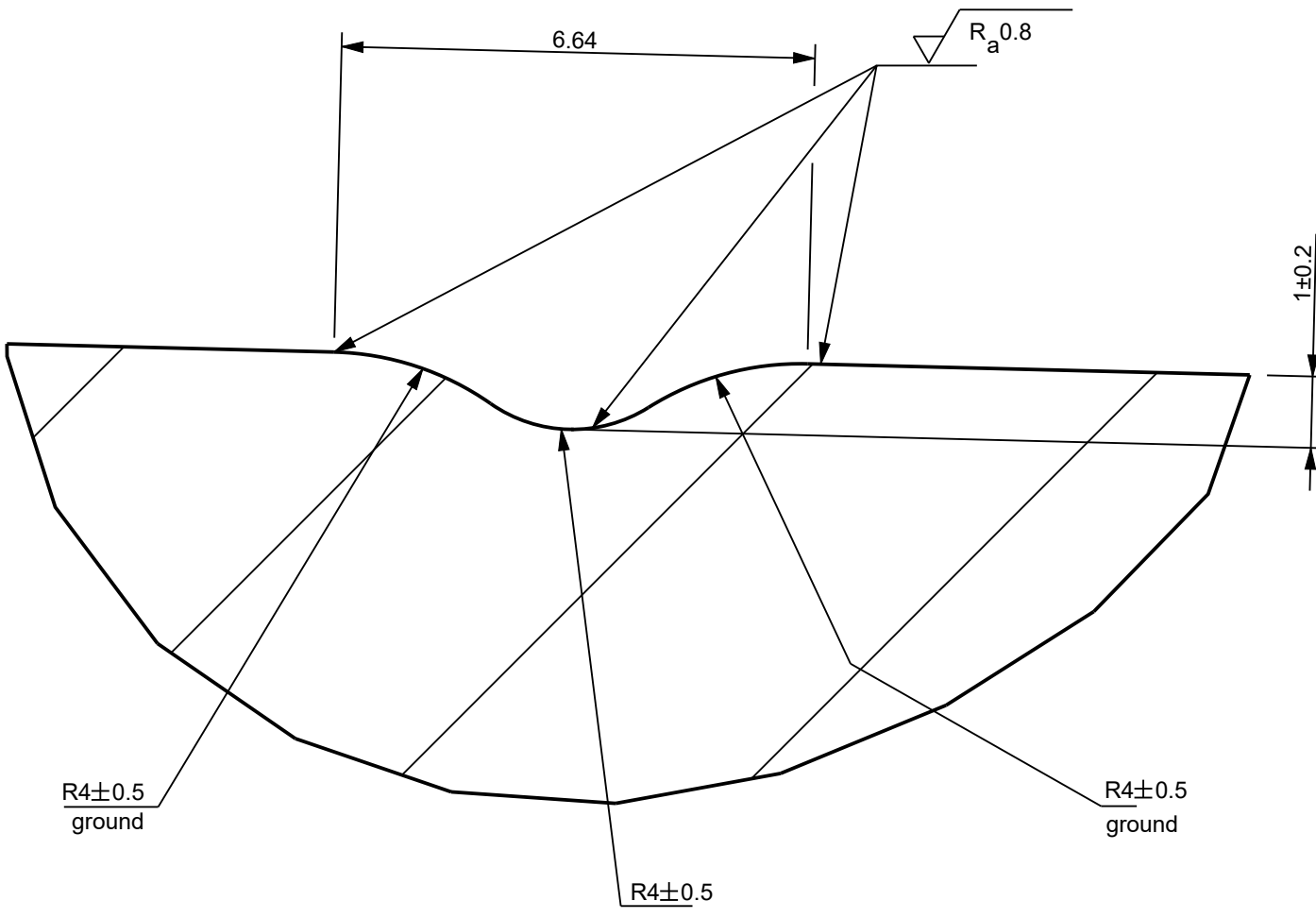
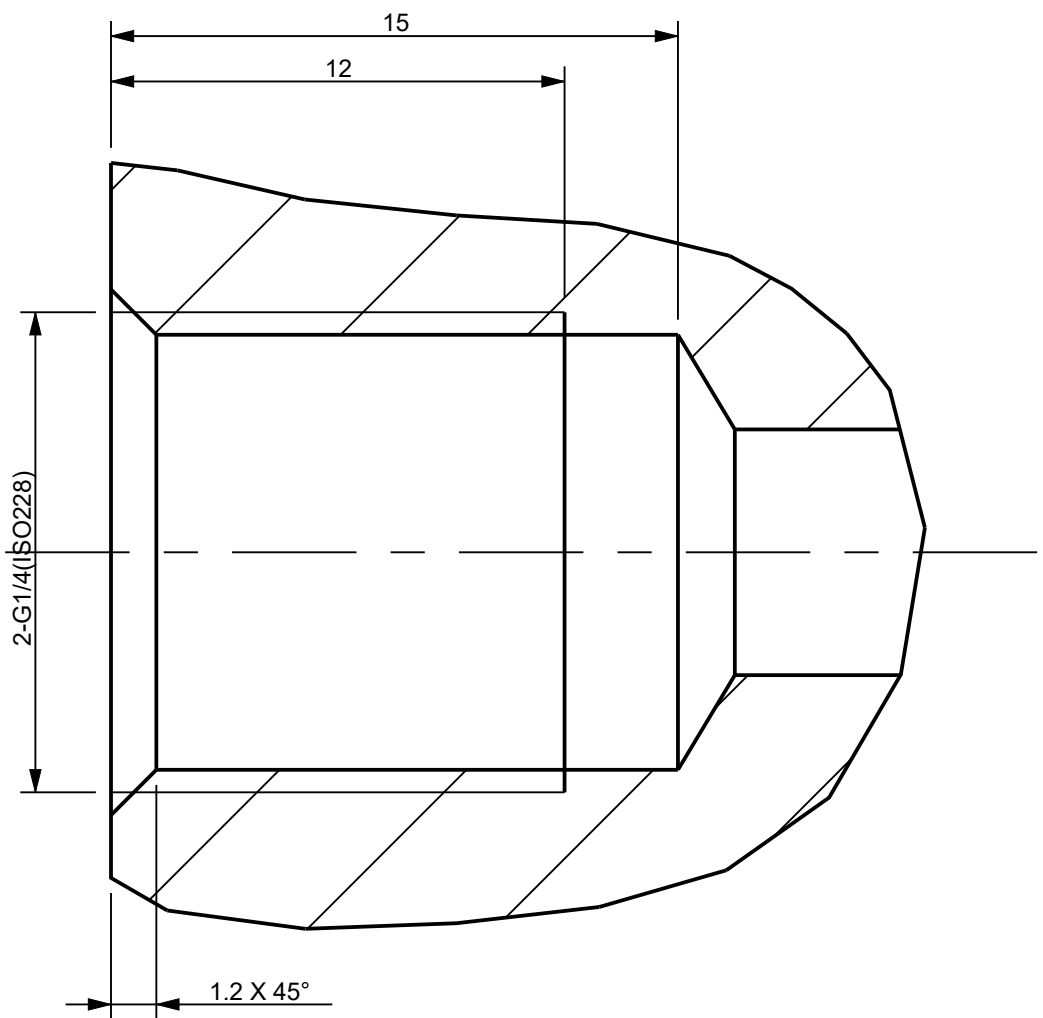
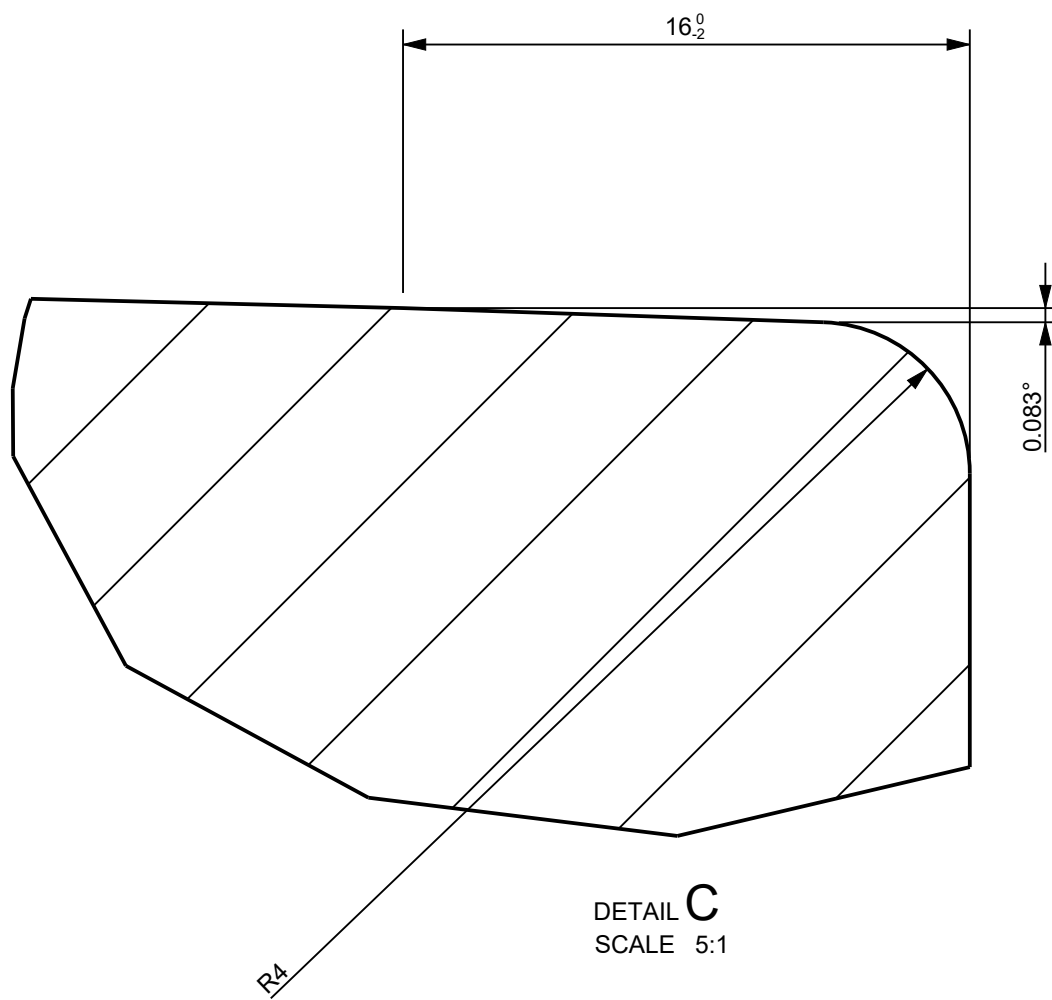


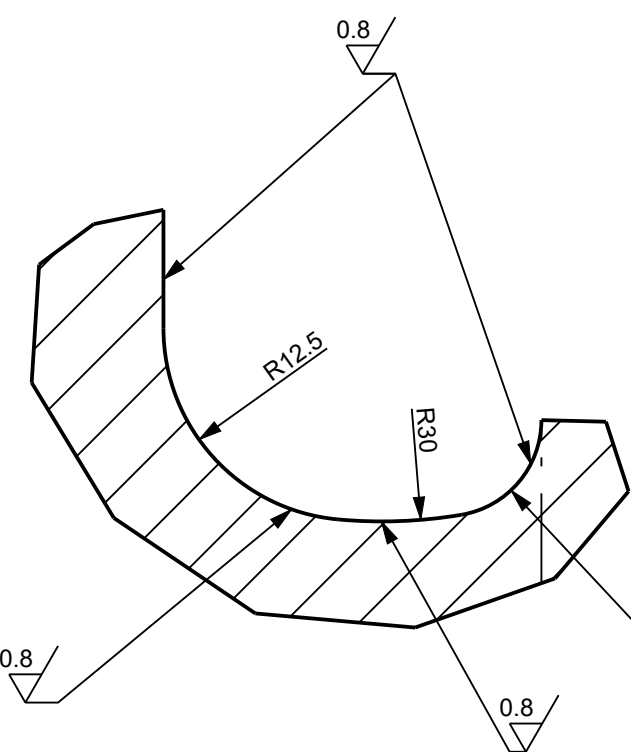
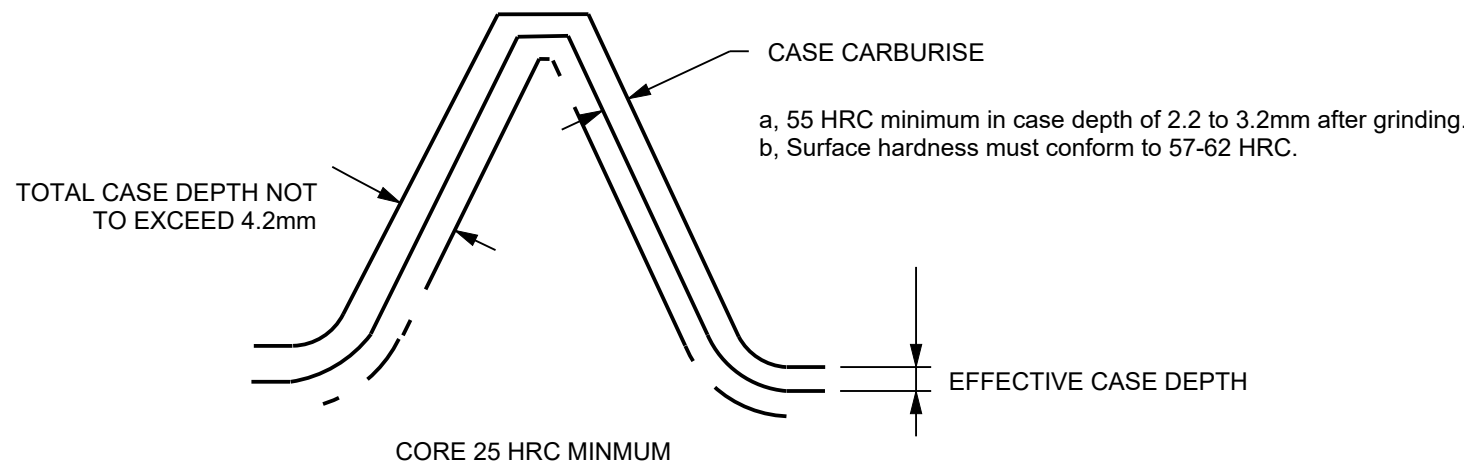
SECTION A-A


NOTE:

1. AFTER SHOOT PEEN GRIND TEETH AND ROOTS. SURFACE FINISH INVOLUTE $\sqrt[0.8]{}$ ANDFILLET $\sqrt[3.2]{}$
- 2.TEETH HARDENED AND GROUND.
3. CASE HARDENED BY CARBURISING.
4. AFTER HEAT TREATMENT SHOT-PEEN TEETH AND ROOTS WITH S330 SHOT 90% MINIMUM COVERAGE. PEENING INTENSITY 0.4 - 0.5 MM.
- 5.CRACK DETECTED MAGNETICALLY (WET FLAURESCENT)TO SPECIFICATION RS/ME/PR/026.
6. INSPECTION RESULTS FOR THESE DIMENSIONS REQUIRED ON DATA SHEET FOR EACH PINION AND MATERIAL AND HEAT TREATMENT CERTIFICATE
7. G = GROUND.
8. ULTRASONIC TEST CERTIFICATE IS REQUIRED.
9. MANUFACTURING STAMP AS INDICATED BELOW.....BATCH NUMBER, MONTH AND YEAR OF MANUFACTURING
10. BREAK ALL SHARP EDGES 3X3MM.
11. ALL DIMENSIONS ARE IN MM UNLESS OTHERWISE INDICATED.



BASIC SPECIFICATION DATA	NUMBER OF TEETH	17	TOLERANCE	
	NORMAL MODULE	9		
	NORMAL PRESSURE ANGLE	20		
	PROFILE SHIFT CO-EFFICIENT	0.2866		
	REFERENCE CIRCLE DIAMETER (PCD)	153		
	ACTUAL CORDIAL TOOTH THICKNESS	15.890	0	-0.05
	TOOTH HEIGHT	23.271		
ADDITIONAL SPECIFICATION DATA	DEDENDUM	10.92	0.13	0.2
	ADDENDUM	12.35	0	-0.05
	TIP RELIEF (µm)	11	5	8
	ROOT RELIEF (µm)	11	5	8
	BASE DIAMETER	143.733		
	CENTRE DISTANCE BETWEEN GEAR AND PINION	540.00		
	CROWNING (µm)	20	10	15
MANUFACTURING AND INSPECTION DATA	REFERENCE PROFILE	1.50 / 0.20 / 1.1 DIN 58400:1984 (mn 0.1-0.6)		
	NUMBER OF TEETH FOR BTL	3		
	BASE TANGENT LENGTH	70.33	-0.089	-0.136
	NORMAL BACKLASH	0.230-0.400		
	MANUFACTURED ROOT DIAMETER	130.897	0	-0.137
	TIP DIAMETER	177.7	0	-0.1
	TIP CHAMFER	1.5		
TOOTH TIP CHAMFER ANGLE	45			
TOOTH QUALITY STANDARD	ISO 1328:1995 Quality 6			



<div>COPYRIGHT THIS DRAWING TOGETHER WITH THE COPYRIGHT IS THE PROPERTY OF TRANSNET THIS DRAWING OR ANY PART THEREOF IS NOT TO BE COPIED OR OTHERWISE REPRODUCED OR USED FOR MANUFACTURE OR ANY OTHER PURPOSE WITHOUT THE WRITTEN PERMISSION FROM TRANSNET ENGINEERING</div>		ASSEMBLY DRG No. - -		DRAWN M.N.	KILNER PARK TRACTION		MATERIAL		
		CLASS 21E		CHECKED N.T.N.	21E PINION		STEEL		
		TYPE LOCOMOTIVE		APPROVED B.E.D.	-		16CrNiMo7-6 or 17CrNiMo6		
		DATE 2023/04/12		SCALE 1:1	-		SHEET 1 OF 1		
A-0	PROJECTION		DOCUMENT REFERENCE No.	PD_PELG_KLP_DRW_176Z	TRANSNET ENGINEERING		No.	PELG_176Z_0570	REV A