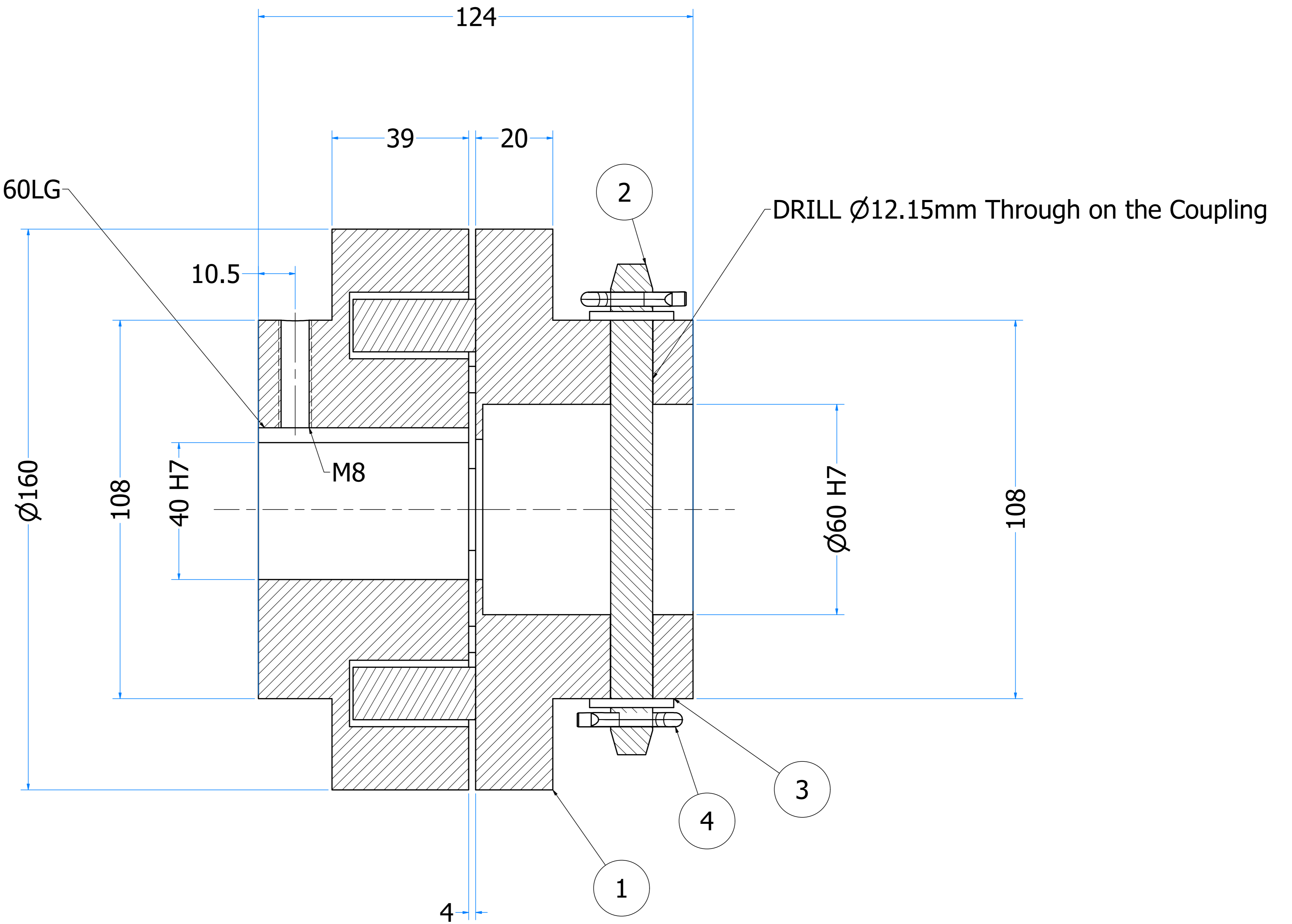
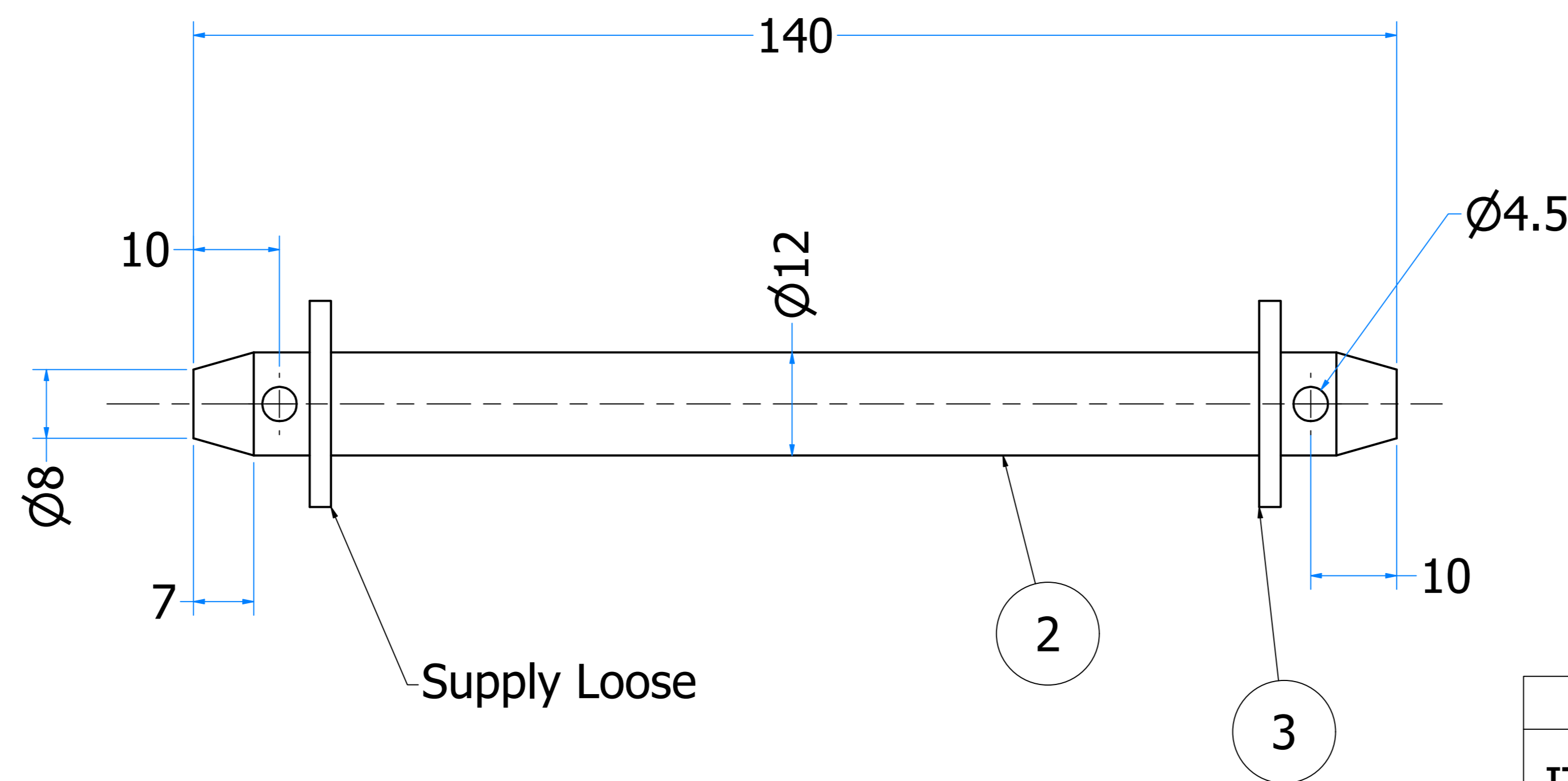


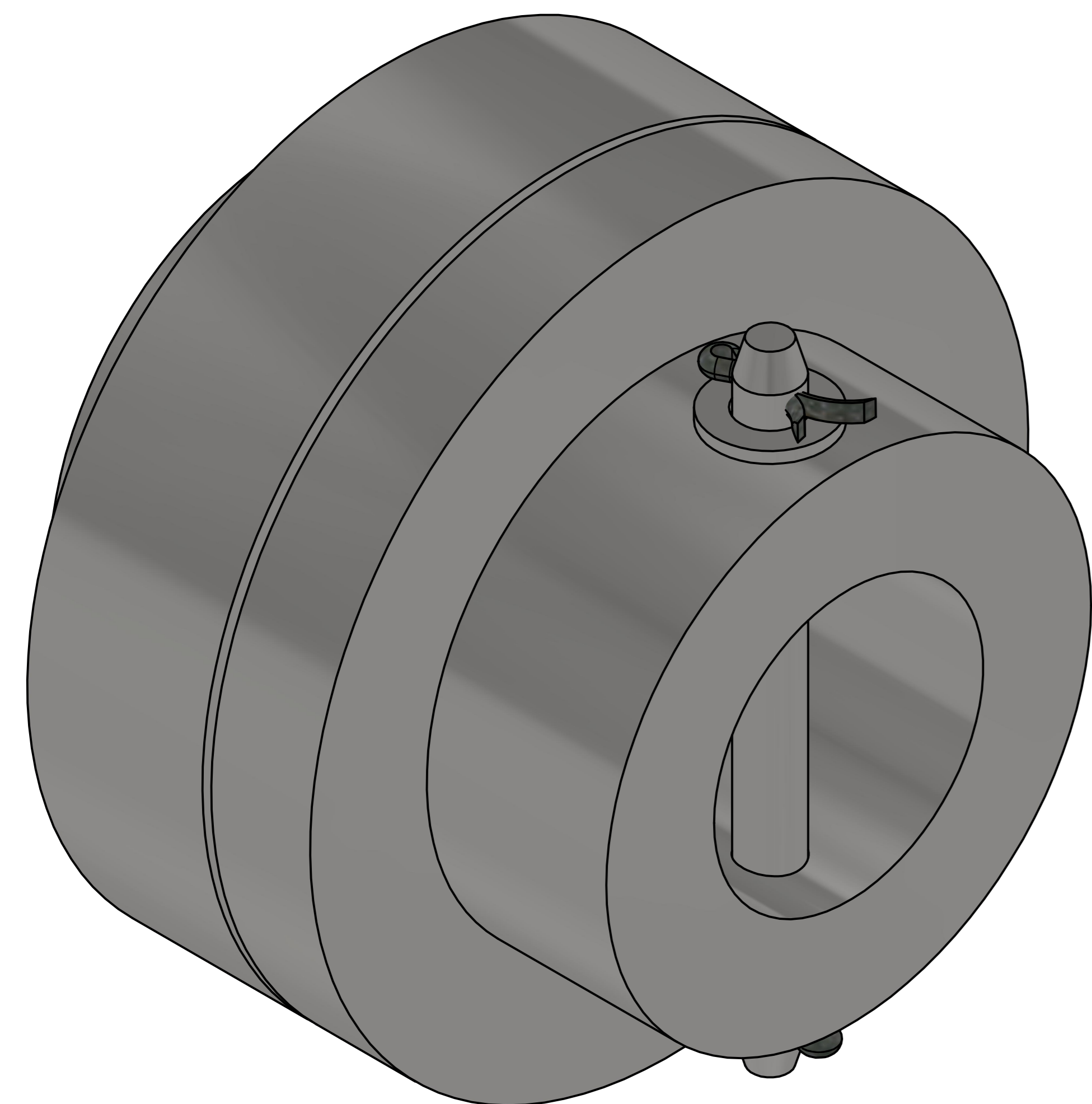
KEY WAY - 12 X 3.3 X 60LG



SECTION A-A
SCALE 1.5: 1



Supply Loose



Murugel 2025/02/19
Kriel PS Flue Gas Cleaning Plant System Engineer

PARTS LIST				
ITEM	QTY	PART NUMBER	DESCRIPTION	MATERIAL
1	1	JC-KRL-CE02-AS07	N-upex Coupling Kriel	A48 GREY CAST IRON
2	1	JC-KRL-CE02-AS07-PT003	SHEAR PIN	EN43A
3	2	***	STD 12 mm X 2 mm Thck WASHER	MILD STEEL
4	2	****	4 X 25 SPLIT PIN	MILD STEEL

REV	DATE	DRAWN	DESCRIPTION
0	18/02/2025	Progress	

UNLESS OTHERWISE SPECIFIED:

ALL DIMENSIONS ARE IN MILLIMETERS.
REMOVE ALL BURR AND BREAK SHARP EDGES.

A3	NAME	DATE	SIGNATURE
DRAWN	Progress	18/02/2025	
CHECKED	Michael Mathee		
APPROVED	Douglas Louw		

THIS DRAWING IS THE PROPERTY OF J & C ENGINEERING

IT IS SUBJECT TO RETURN ON DEMAND AND MAY NOT BE PASSED ON TO ANY THIRD PARTY OR USED DIRECTLY OR INDIRECTLY FOR ANY OTHER PURPOSE THAN TO SERVE THE ORDER OF J & C ENGINEERING DESIGNS PROTECTED BY COPYRIGHT AMENDMENT ACT OF 1990

Kriel Power Station
CE Drives N-Upex Coupling with Shear Pin

DRAWING NUMBER
JC-KRL-CE02-AS08

REVISION
0

273 FLEMING ROAD
MEADOWDALE
JOHANNESBURG



FIRST ANGLE PROJECTION