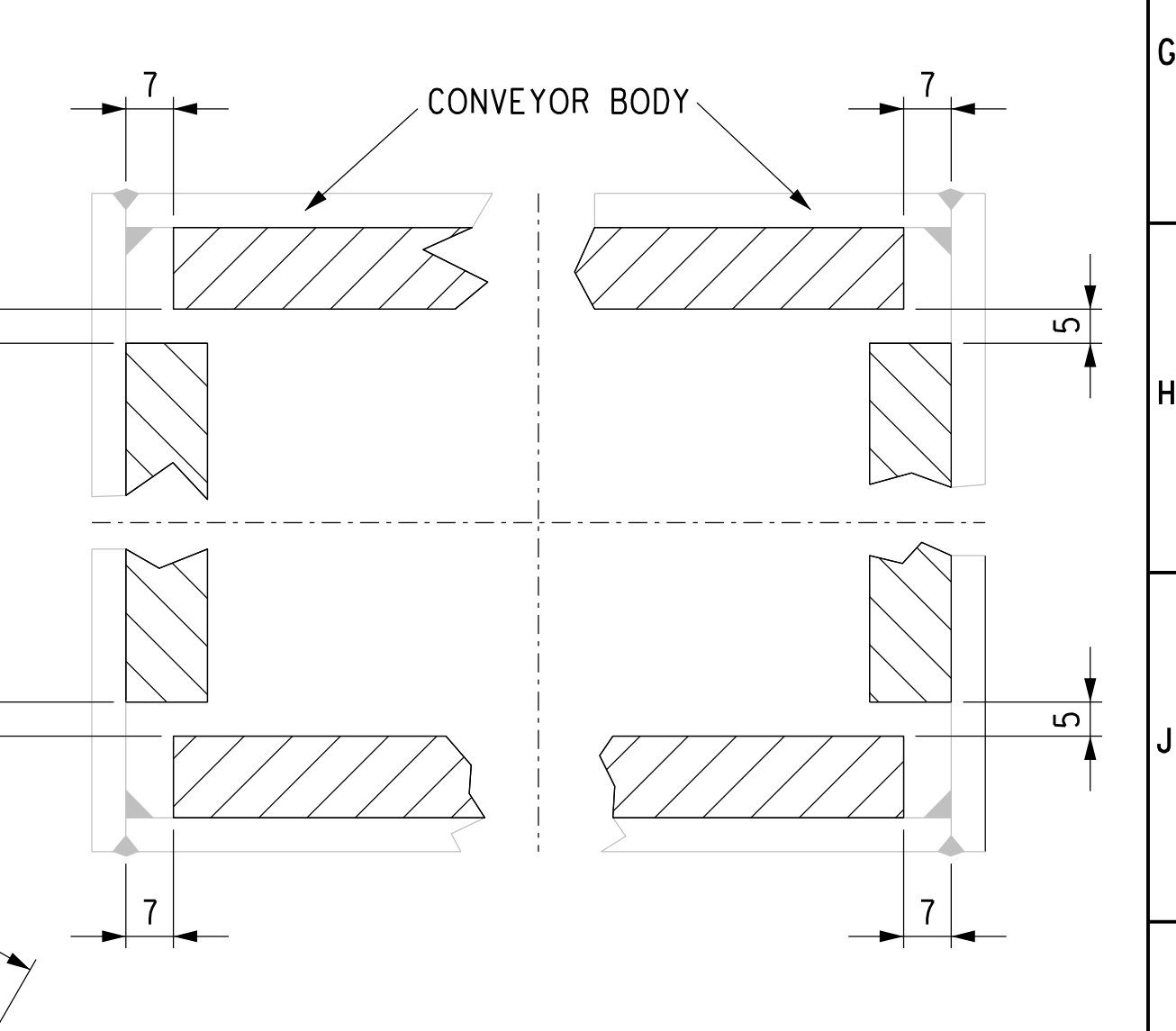


ITEM No.:	MATERIAL	LINER THICKNESS (mm.)	WEIGHT PER UNIT (kg.)	QTY. FOR ONE MILL
B39-70	ROOLAST AH360	12	31.25	26
B39-71	ROOLAST AH360	12	41.3	4
B39-72	ROOLAST AH360	12	29.75	2
B39-73	ROOLAST AH360	12	11.9	4
B39-74	ROOLAST AH360	12	24	12
B39-75	ROOLAST AH360	12	23	4
B39-76	ROOLAST AH360	12	8	8
B39-77	ROOLAST AH360	12	30	4
B39-78	ROOLAST AH360	12	28	4
B39-79	ROOLAST AH360	12	15.5	4
B39-80	ROOLAST AH360	12	38	4
B39-81	ROOLAST AH360	12	5.7	4
B39-82	ROOLAST AH360	12	18	4
B39-83	ROOLAST AH360	12	26	4
B39-84	ROOLAST AH360	12	37	2
B39-85	ROOLAST AH360	12	19.5	2
B39-86	ROOLAST AH360	12	82	2
B39-87	ROOLAST AH360	12	28	1
B39-88	ROOLAST AH360	12	28	1
B39-89	ROOLAST AH360	12	24.8	1
B39-90	ROOLAST AH360	12	8.3	2
B39-91	ROOLAST AH360	20	25	4
B39-92	ROOLAST AH360	20	58.3	8
B39-93	ZS.9/308	DTL. A	48.8	2
B39-94	ZS.9/308		47.8	6
B39-95	ZS.9/308	SECT. A-A	43.8	2
B39-96/V	GRADE 8.8		0.15	30
B39-96/R1	LEAD		0.02	30
B39-96/R2	STEEL		0.015	30
B39-96/E	GRADE 8.8		0.04	60
B39-70/01	ROOLAST AH360	12	31.25	2

TOTAL WEIGHT OF DRIVE END LINERS: 1831.2kg
 TOTAL WEIGHT OF NON DRIVE END LINERS: 1824.8kg



NOTES:
 1. FOR GENERAL TOLERANCES SEE SPECIFICATION UNLESS SPECIFIED OTHERWISE ON DRAWING
 - USE MEDIUM CLASS 1.5 52-83
 2. REFERENCE DRAWINGS: 0.66/ (MAKER'S No.): 0.84.007.0.51.B516
 0.66/ (MAKER'S No.): 0.84.007.0.51.B517
 0.66/ (MAKER'S No.): 0.84.007.0.51.B518

NO.	REV.	DATE	DESCRIPTION	BY	CHKD.	APPD.	REF.

MAJUBA POWER STATION
 COAL HANDLING PLANT
 BOILER TUBE MILLS BBD04760BIS
 CONVEYOR BODY LINERS
 GENERAL ARRANGEMENT

0.66/98209