



## THEMBISILE HANI LOCAL MUNICIPALITY



### UPGRADING OF MAHLABATHINI WATER INFRASTRUCTURE

#### SITE INFORMATION

#### SITE INFORMATION

##### 4.1 Compulsory Site Inspection.

The bidder shall inform him/herself on the nature of the site and inspect the site.

The Employer will consider a bid only if the site inspection and/or bidder's meeting arranged by the Employer has been attended by a representative who must;

- Be suitably qualified to comprehend the implications of the work involved and
- Be the bidder him/herself or a person in the direct employ of the bidder.

It is envisaged that there is existing services present underground such as water line and electrical cable that need to be taken care off. It is the Contractors responsibility to ensure that those services are not damaged.

Should the services be damaged, it will be fixed at the Contractor's expense.

##### 4.2 Site Location.

Mahlabathini lies approximately 90 km northeast of Pretoria, positioned adjacent to the Moloto Road (R573) and R568. The township is situated at a geographical elevation ranging between 1228 m and 1247 m above sea level, with central coordinates at 25°22'41.25"S latitude and 28°41'57.06"E longitude. The municipal wards associated with the township are provided in the accompanying table.

#### Location of Area

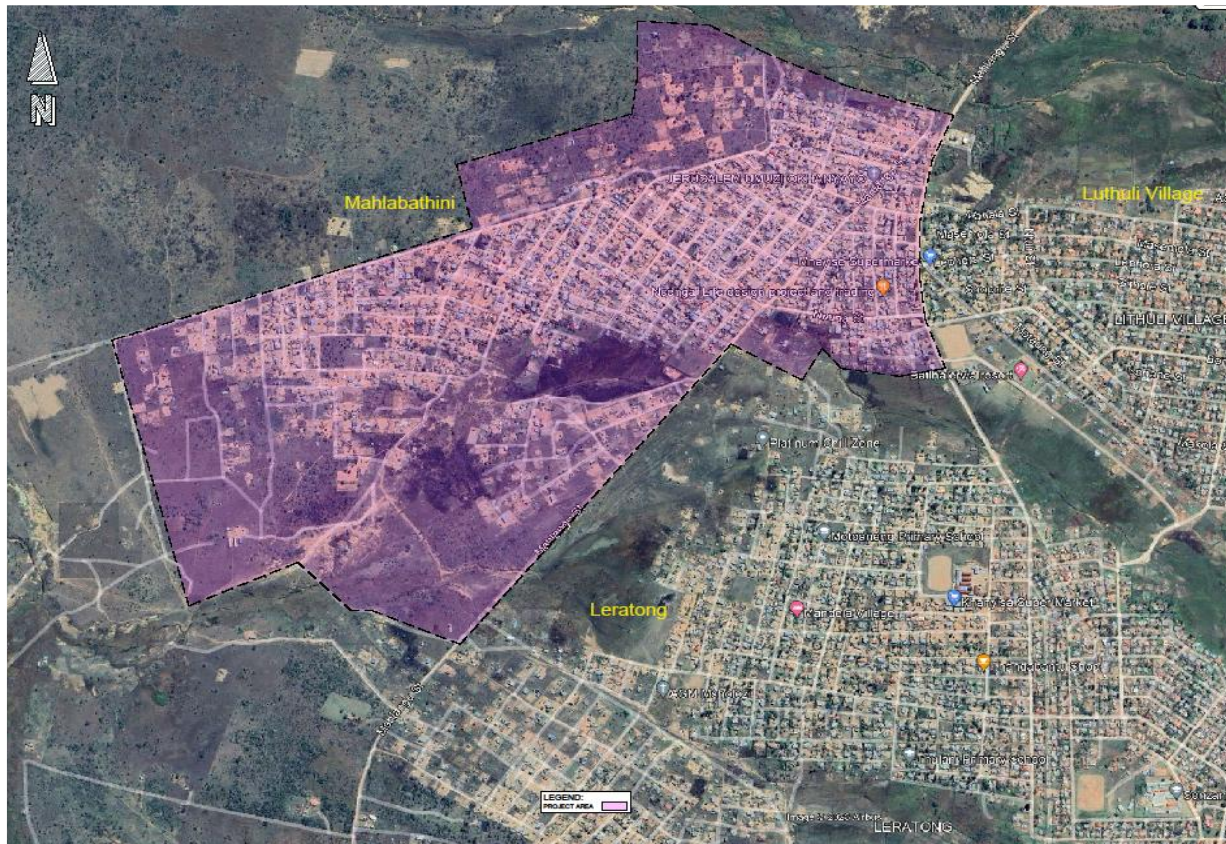
No	Village name	Ward	Latitude (S)	Longitude (E)
1	Mahlabathini	22	25°22'41.25"S	28°41'57.06"E

#### Locality Details

- Province : Mpumalanga Province
- District : Nkangala District Municipality
- Municipality : Thembisile Hani Local Municipality



### 4.3 Site Layout.





## THEMBISILE HANI LOCAL MUNICIPALITY



## UPGRADING OF MAHLABATHINI WATER INFRASTRUCTURE

### DRAWINGS

#### PROJECT DRAWINGS

##### 5.1 Tender Drawings.

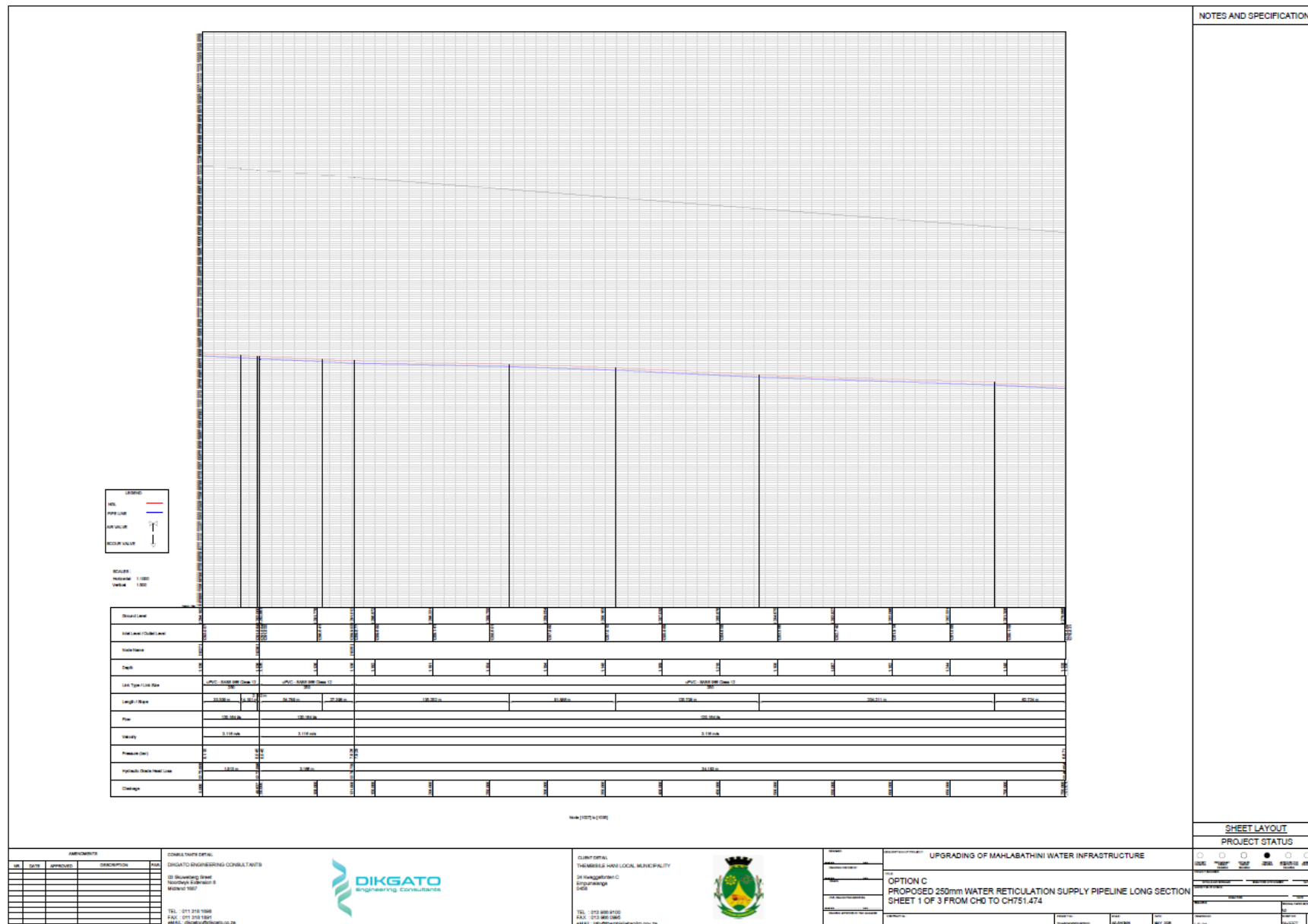
DRAWING No.	DESCRIPTION
602231-G-LAY-01	Water Reticulation Layout
G-LAY-01	Water Reticulation proposed 250mm Pipeline
LS-01	250mm Water Reticulation Supply Pipeline Longsection Sheet 1 of 3
LS-02	250mm Water Reticulation Supply Pipeline Longsection Sheet 2 of 3
LS-03	250mm Water Reticulation Supply Pipeline Longsection Sheet 3 of 3
LS-01	Bulk Water Meter Chamber Layout and Detail
LS-01	Bulk Scour Valve Chamber Layout







THLM/SCM06/2025-2026/WS01: UPGRADING OF MAHLABATHINI WATER  
INFRASTRUCTURE

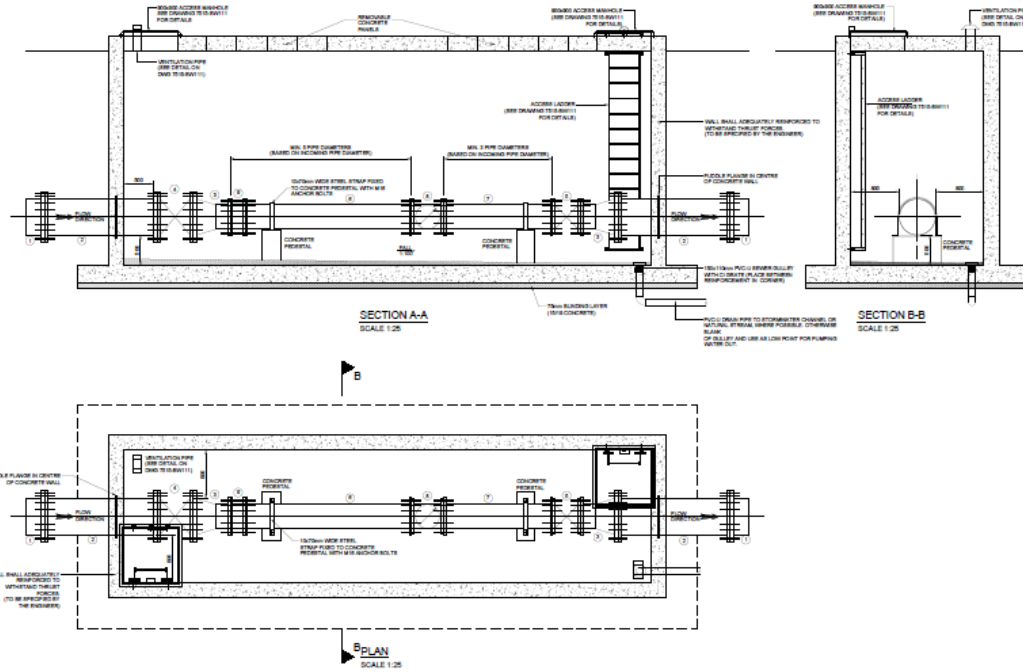








THLM/SCM06/2025-2026/WS01: UPGRADING OF MAHLABATHINI WATER INFRASTRUCTURE



TYPICAL STEEL PIPE FITTINGS AND ITEM LIST			
ADDENDUM PIPE LINE WITH 1000kPa MAX. WORKING PRESSURE, USED AS AN EXAMPLE			
ITEM NO.	DESCRIPTION	NO. QTY	CHARACTERISTICS
1	STEEL FLANGE ADAPTOR PIPE, FLANGED TO 100mm (100mm)	2	
2	STEEL FLANGE ADAPTOR PIPE, FLANGED TO 100mm (100mm)	2	
3	STEEL FLANGE ADAPTOR PIPE, FLANGED TO 100mm (100mm)	2	
4	STEEL FLANGE ADAPTOR PIPE, FLANGED TO 100mm (100mm)	1	
5	STEEL FLANGE ADAPTOR PIPE, FLANGED TO 100mm (100mm)	1	
6	STEEL FLANGE ADAPTOR PIPE, FLANGED TO 100mm (100mm)	1	
7	STEEL FLANGE ADAPTOR PIPE, FLANGED TO 100mm (100mm)	1	
8	STEEL FLANGE ADAPTOR PIPE, FLANGED TO 100mm (100mm)	1	
9	STEEL FLANGE ADAPTOR PIPE, FLANGED TO 100mm (100mm)	1	

NOTES AND SPECIFICATIONS

NOTES

1. THE DRAWING IS THE TYPICAL LAYOUT OF THE TYPICAL LAYOUT FOR A BULK WATER METER CHAMBER.
2. EACH CHAMBER SHALL BE PROPERLY DESIGNED BY A COMPETENT PERSON.
3. ALL CHAMBERS SHALL BE APPROVED BY THE DESIGN, MANUFACTURE, SUPPLY AND QUALITY CONTROL DEPARTMENT.
4. REFER TO DRAWING 100mm (100mm) FOR DETAILS OF CONNECTIONS, ACCESS MANHOLES, AND VENT.

SHEET LAYOUT

PROJECT STATUS

NO.	DATE	BY	REVISION
1	2025	2025	2025
2	2025	2025	2025
3	2025	2025	2025
4	2025	2025	2025
5	2025	2025	2025
6	2025	2025	2025
7	2025	2025	2025
8	2025	2025	2025
9	2025	2025	2025
10	2025	2025	2025

NO.	DATE	BY	REVISION
1	2025	2025	2025
2	2025	2025	2025
3	2025	2025	2025
4	2025	2025	2025
5	2025	2025	2025
6	2025	2025	2025
7	2025	2025	2025
8	2025	2025	2025
9	2025	2025	2025
10	2025	2025	2025

NO.	DATE	BY	REVISION
1	2025	2025	2025
2	2025	2025	2025
3	2025	2025	2025
4	2025	2025	2025
5	2025	2025	2025
6	2025	2025	2025
7	2025	2025	2025
8	2025	2025	2025
9	2025	2025	2025
10	2025	2025	2025



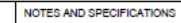
NO.	DATE	BY	REVISION
1	2025	2025	2025
2	2025	2025	2025
3	2025	2025	2025
4	2025	2025	2025
5	2025	2025	2025
6	2025	2025	2025
7	2025	2025	2025
8	2025	2025	2025
9	2025	2025	2025
10	2025	2025	2025







NO.	DATE	BY	REVISION
1	2025	2025	2025
2	2025	2025	2025
3	2025	2025	2025
4	2025	2025	2025
5	2025	2025	2025
6	2025	2025	2025
7	2025	2025	2025
8	2025	2025	2025
9	2025	2025	2025
10	2025	2025	2025

UPGRADING OF MAHLABATHINI WATER INFRASTRUCTURE

TYPICAL LAYOUT FOR BULK WATER METER CHAMBERS



PROJECT NAME: <b>UPGRADING OF MAHLABATHINI WATER INFRASTRUCTURE</b>		   	
<b>TYPICAL LAYOUT FOR BULK SCOUR VALVE CHAMBERS</b>		DRAWN BY: <b>...</b> CHECKED BY: <b>...</b> DATE: <b>...</b>	
NO. <b>...</b> REVISION: <b>...</b>	REVISION: <b>...</b> DATE: <b>...</b>	NO. <b>...</b> REVISION: <b>...</b>	NO. <b>...</b> REVISION: <b>...</b>