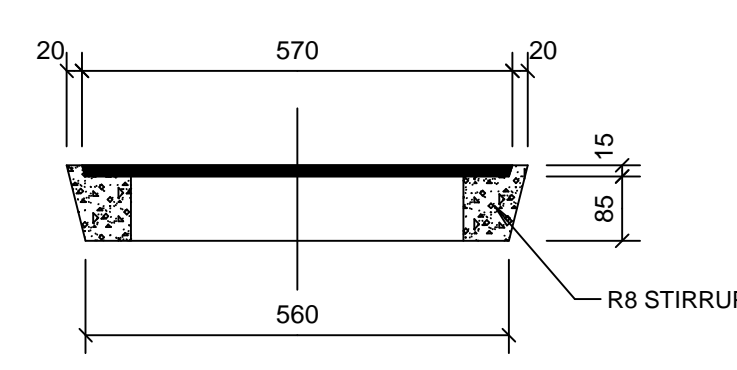
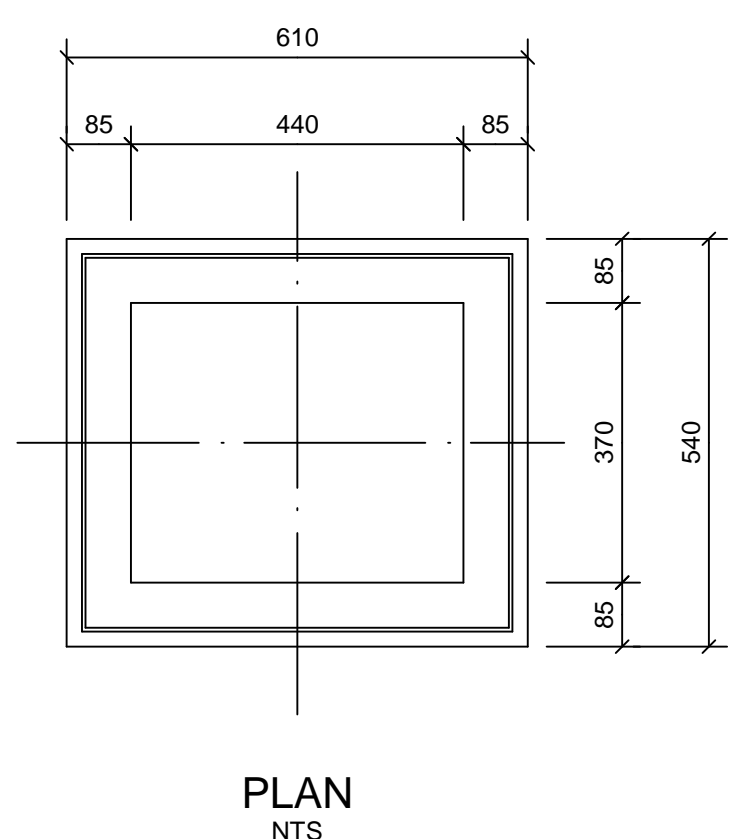
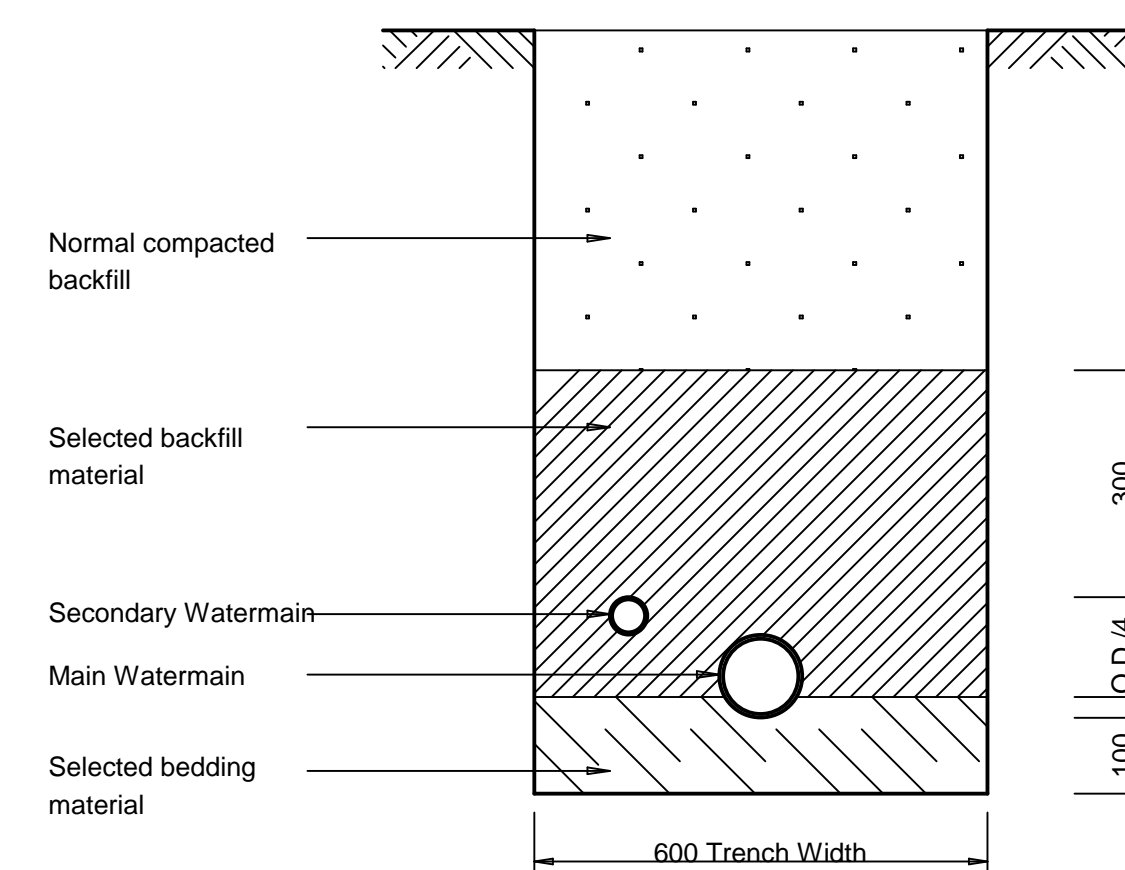
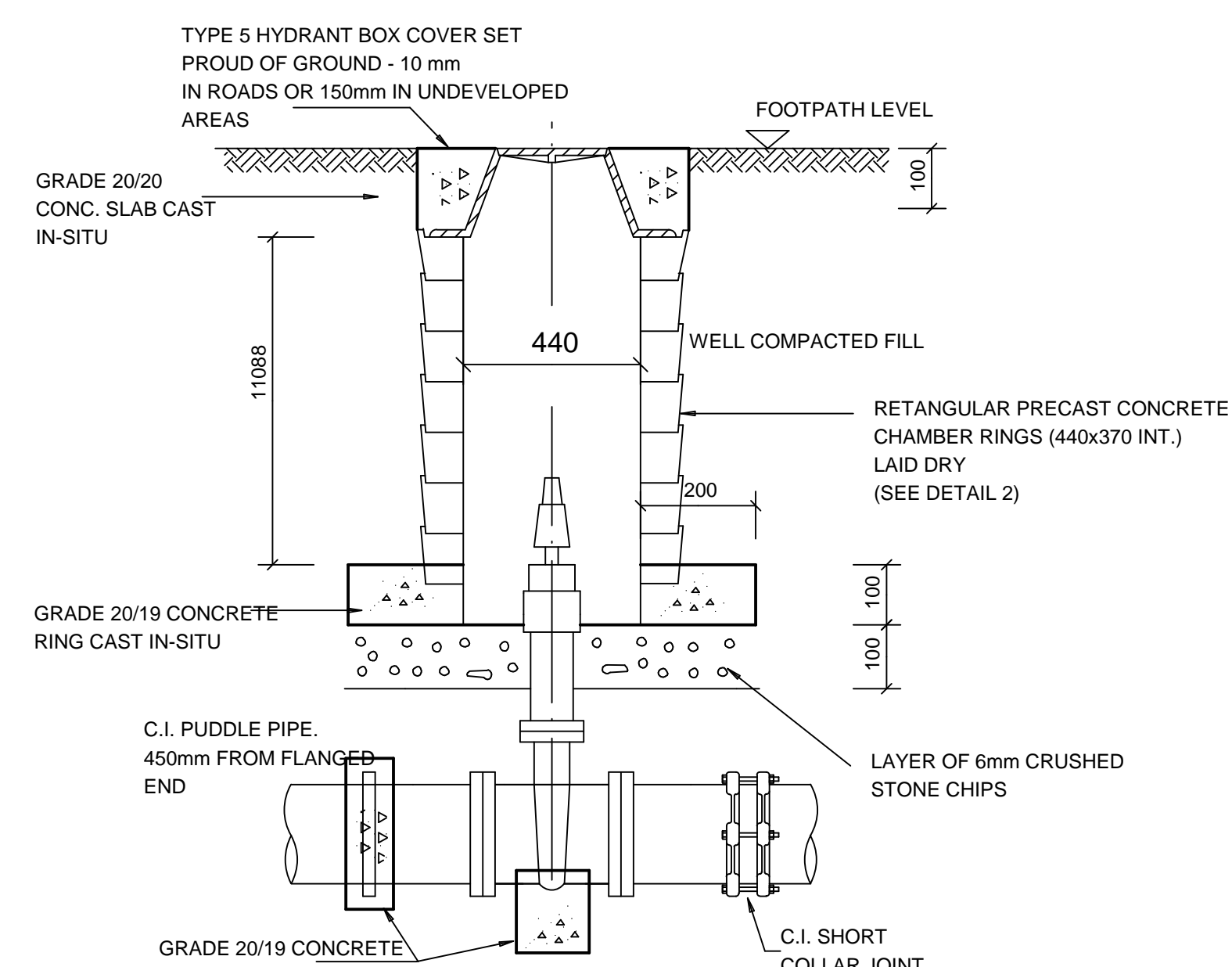
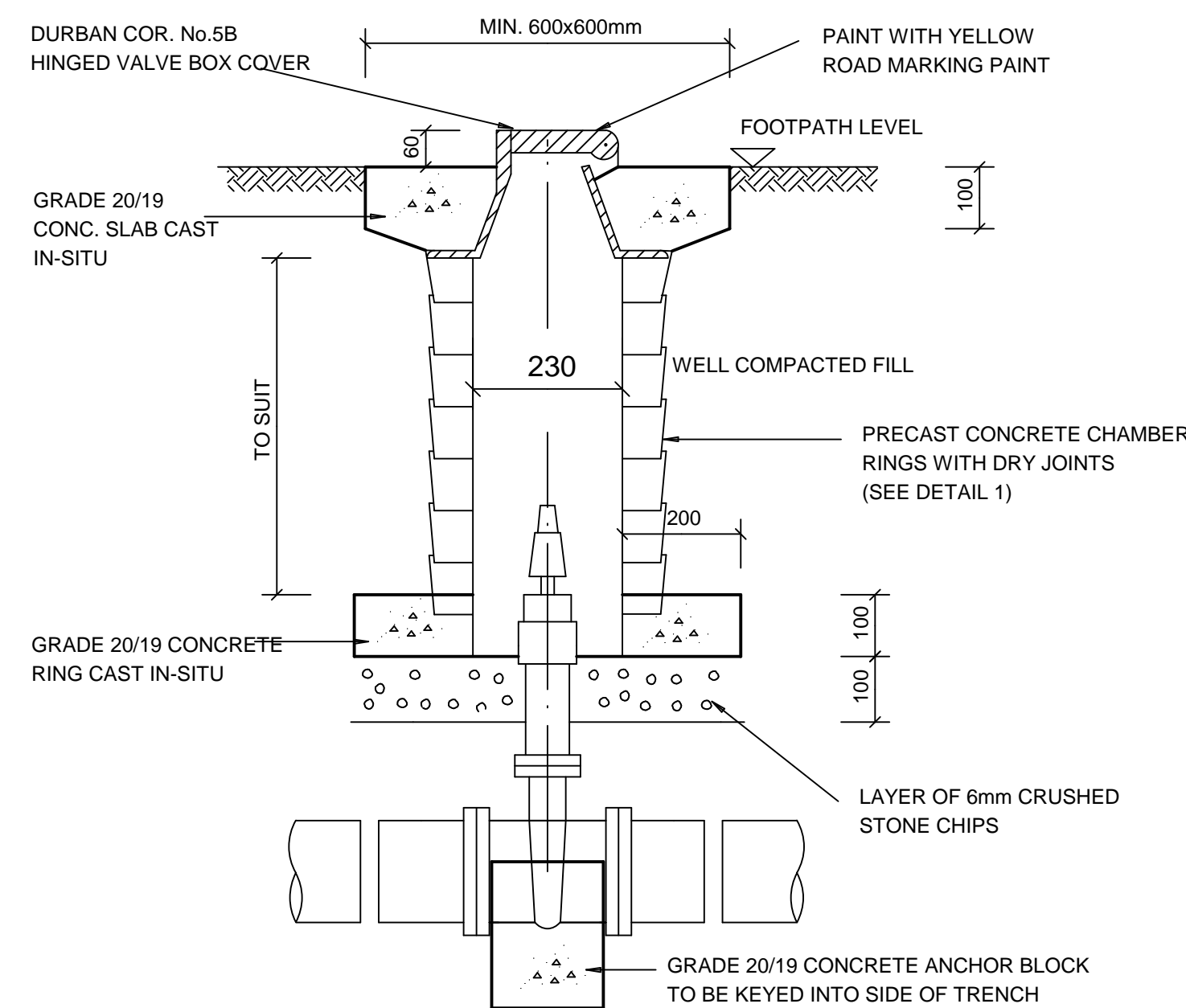


DETAIL 1  
STANDARD PRECAST CONCRETE CIRCULAR  
RINGS FOR VALVE CHAMBERS

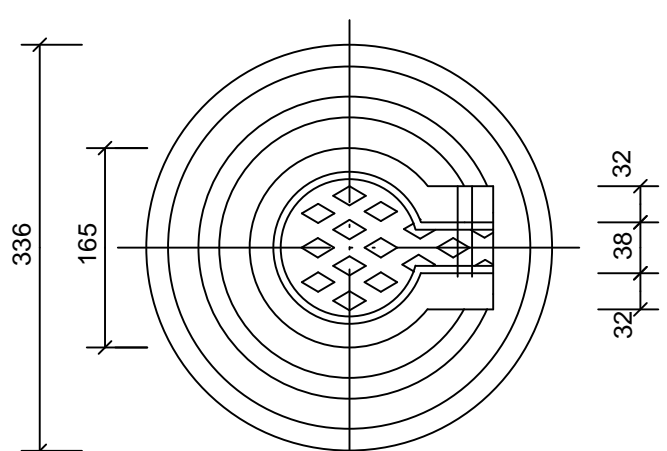
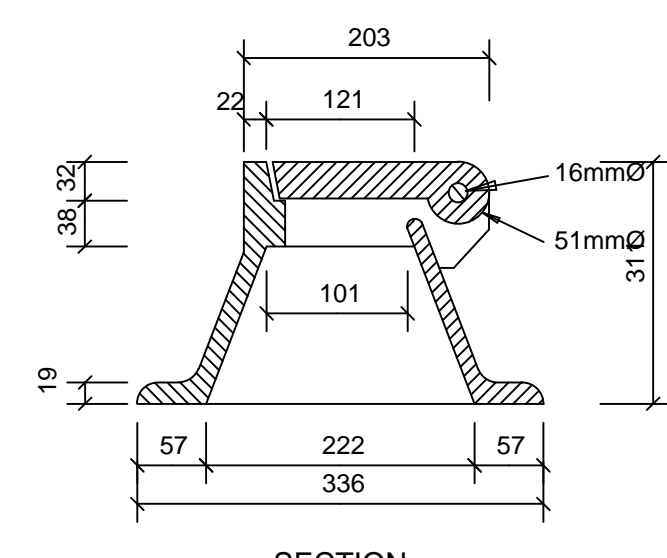


DETAIL 2  
STANDARD PRECAST CONCRETE RECTANGULAR  
SECTION FOR VALVE CHAMBERS

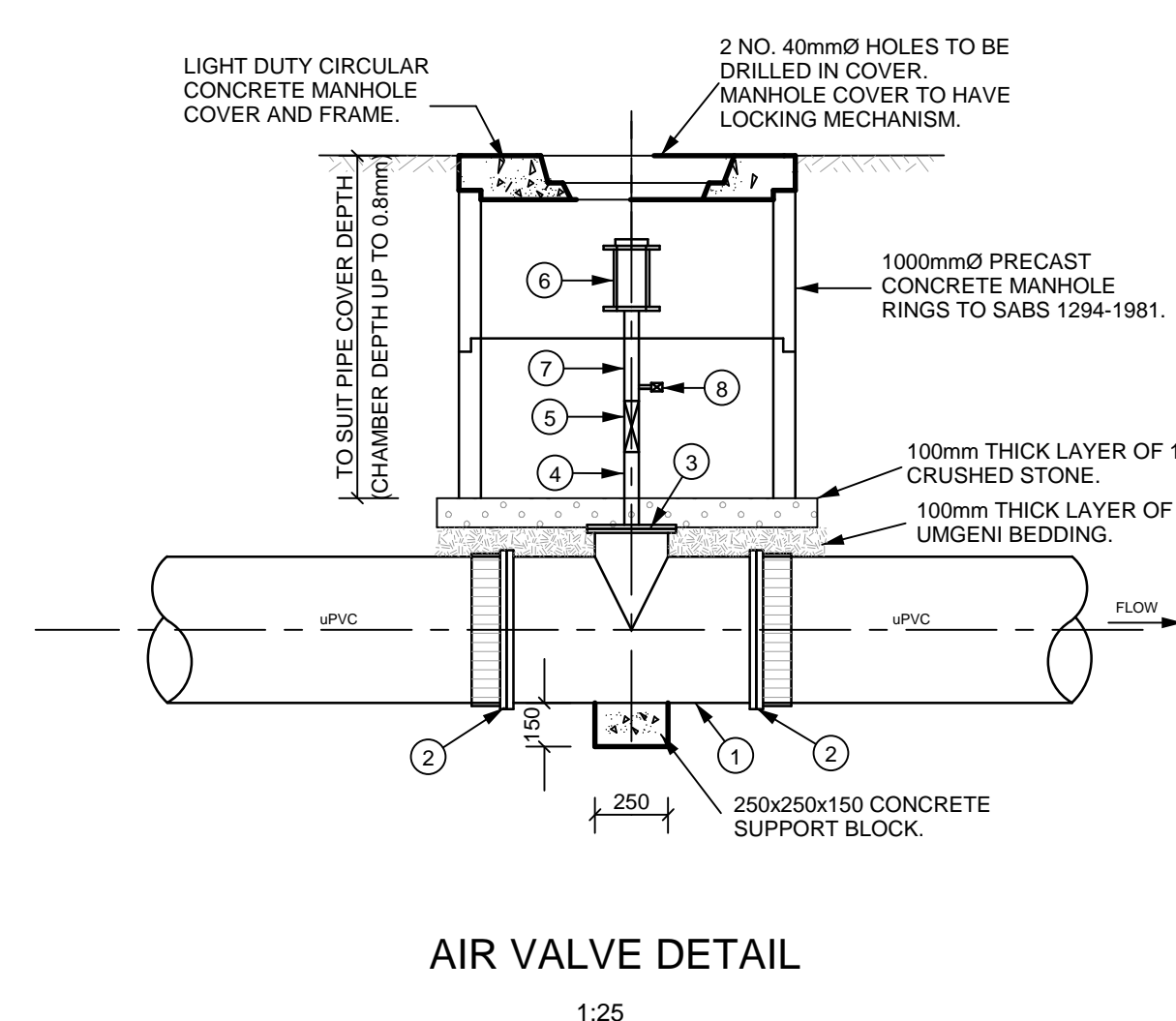
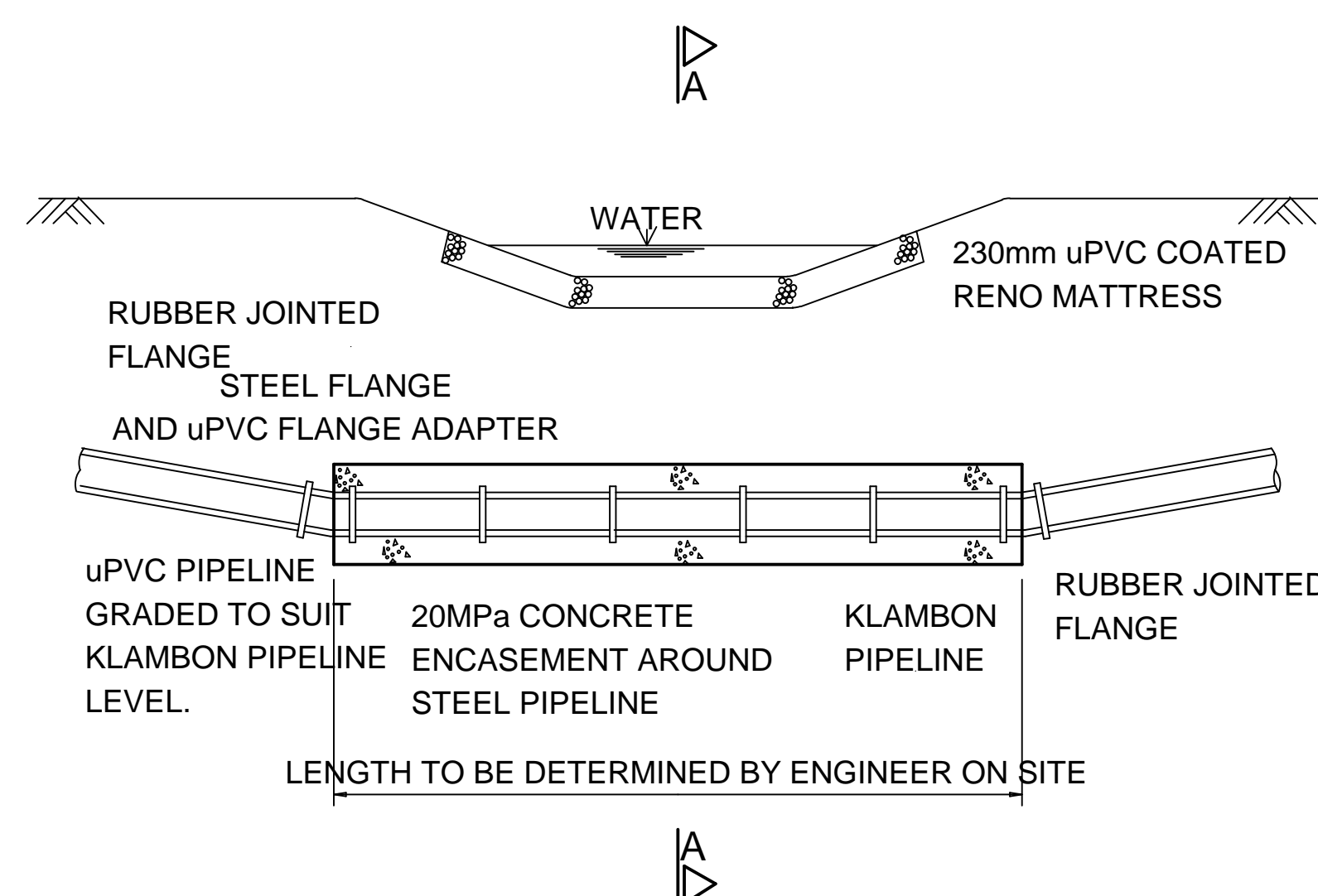
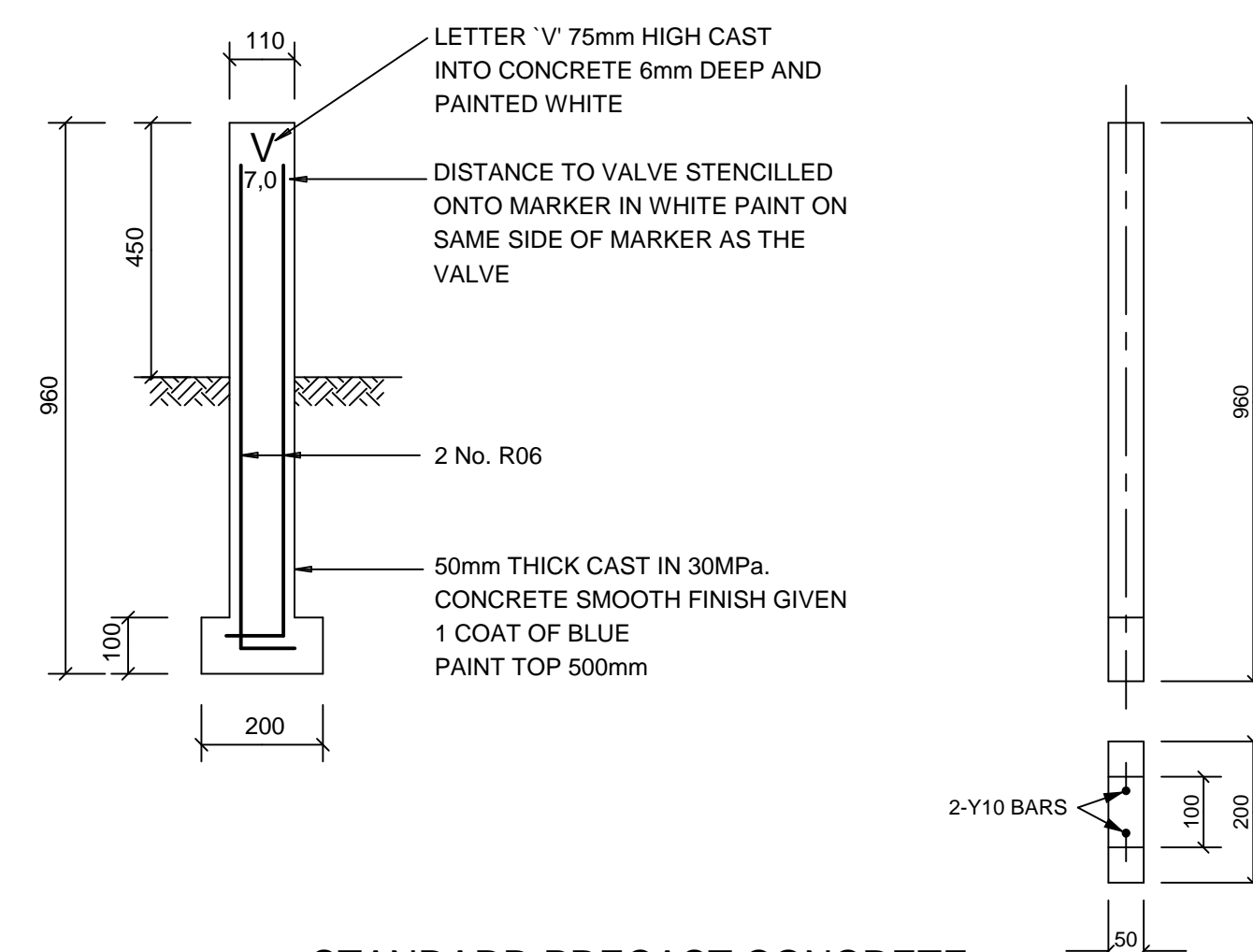
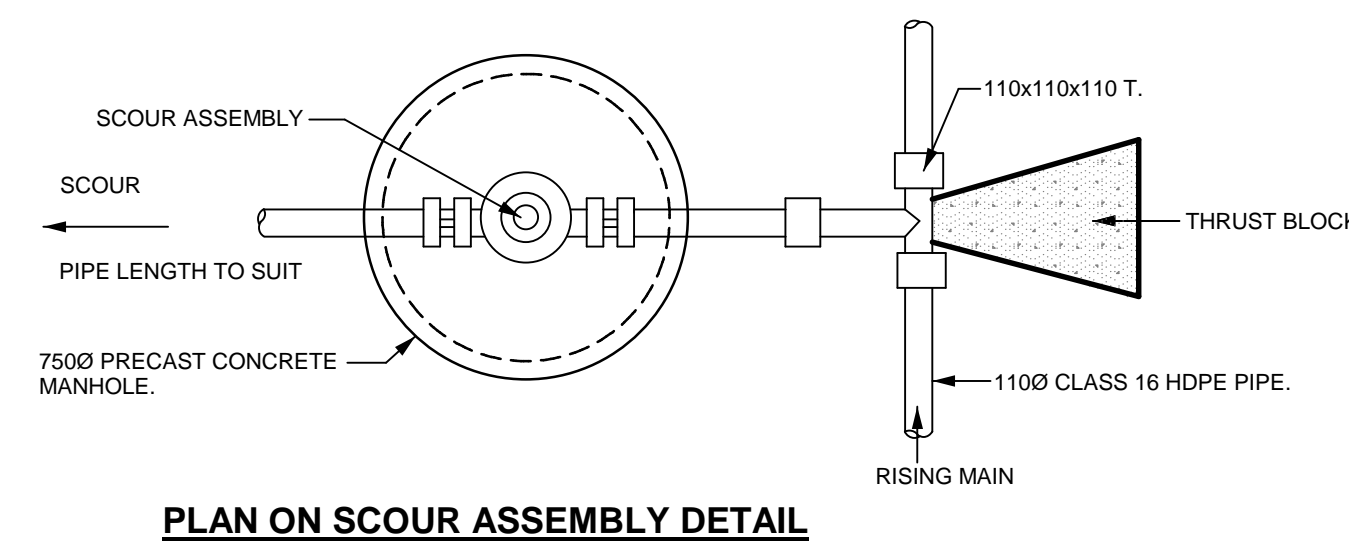
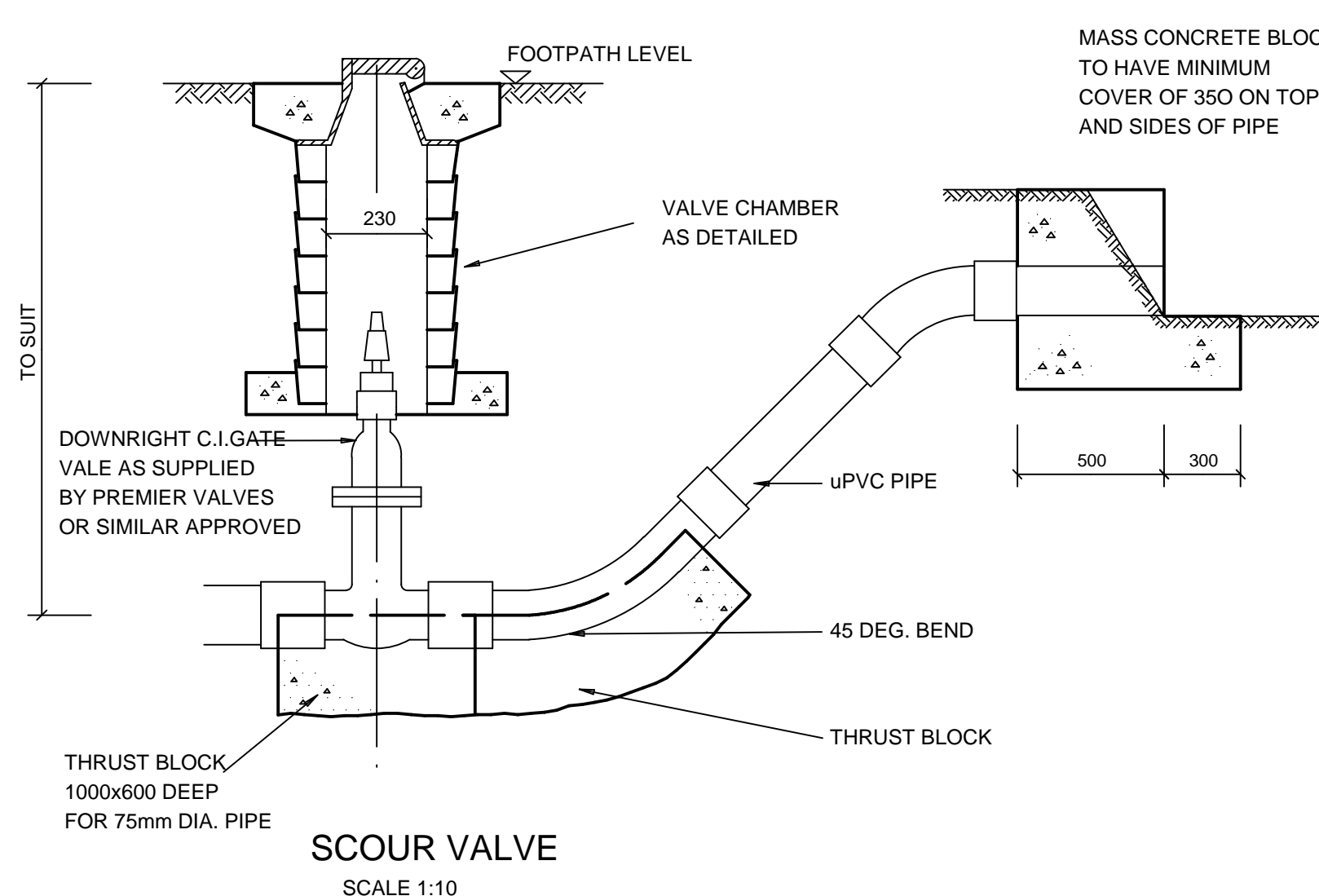
**NOTE :** CONCRETE MIX 3:1 UMGANI SAND TO CEMENT  
DRY MIX FINISH PRESS AND STRUCK SMOOTH  
PAINTED BLUE



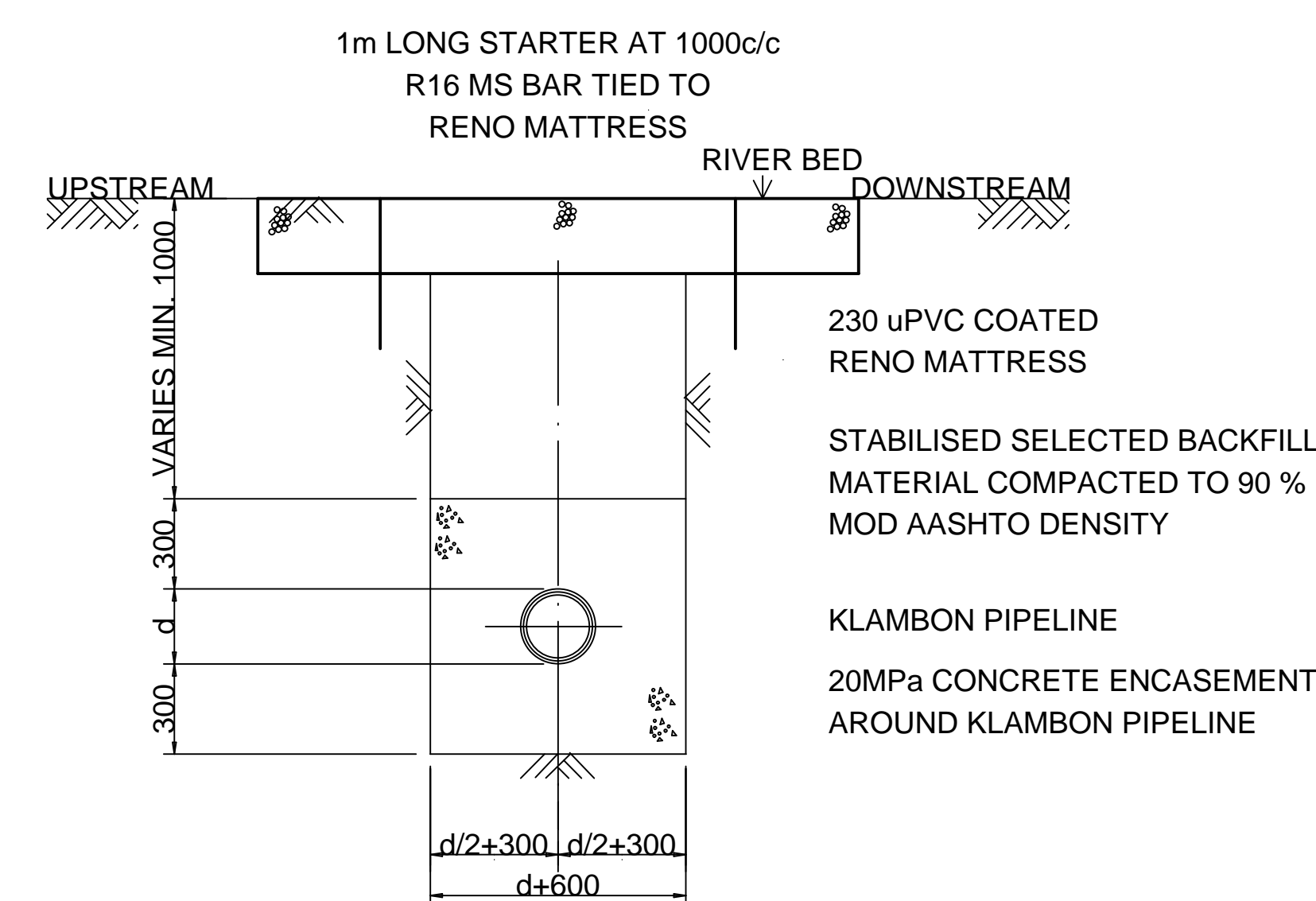
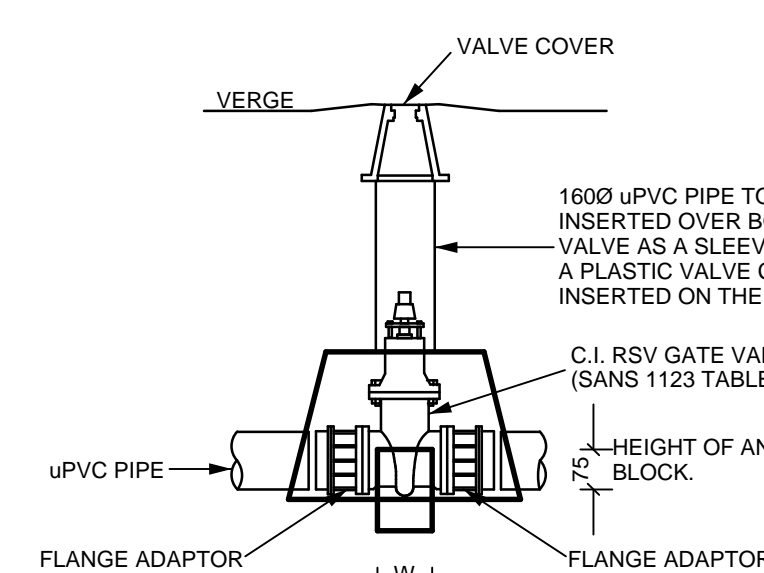
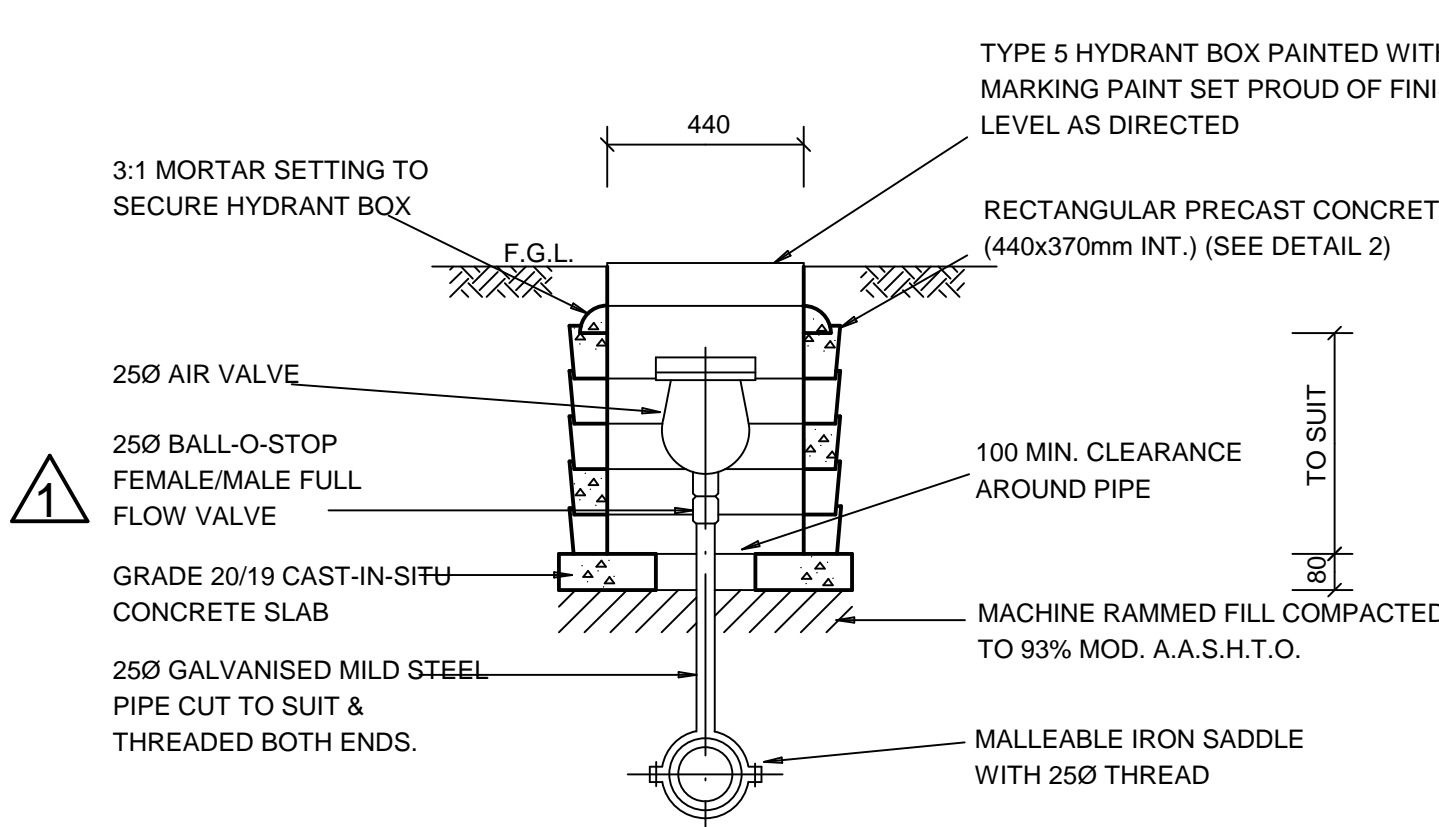
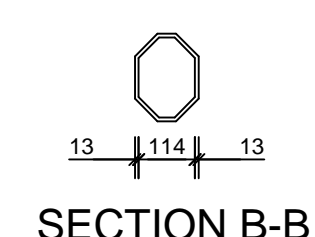
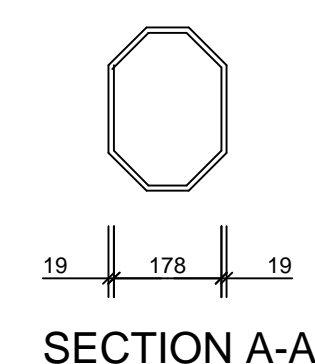
NOTE : Detail is in accordance with  
Code of Practice 0.102 - 1968





DURBAN CORPORATION No. 5B  
HINGED VALVE BOX



PIPEWORK DETAILS - 50mmØ AIR VALVE		
NO.	DESCRIPTION	QUANT
1	25x350mm FLANGED STEEL TEE	1
2	250mmØ MANIFIT FLANGED VJ COUPLING O.S.A.	1
3	STEEL BLANK FLANGE WITH 50mmØ OPENING	1
4	50mmØ STEEL PIPE, 2000mm LONG WELDED TO OPENING IN BLANK FLANGE ONE END BSP MALE	1
5	50mmØ CHROME PLATED BRASS BALL VALVE (CLASS 16) (BSP FEMALE BOTH ENDS)	1
6	50mmØ VENT-O-MAT RBX DOUBLE PURGE AIR VALVE WITH ANTI-SUCK-OVERFLOW (CLASS 250 BSP MALE)	1
7	50x150mm REDUCING TEE, REDUCING END TO BE MALE THREADED, (BSP MALE AND FEMALE END)	1
8	150mmØ BALL VALVE (BSP FEMALE ENDS)	1



DRAWING NO.		TITLE	
 NORTH      POINT			
NOTES			
NO.	AMENDMENT	APPROVED	DATE
REVISIONS			
<h2 style="margin: 0;">AS BUILT</h2>			
SUPERVISING AUTHORITY .....			
DATE: .....			
CLIENT			
<div style="display: flex; justify-content: space-between; align-items: flex-start;"> <div style="width: 30%;"> <p><b>Thakwani Geocivils cc T/A</b></p> <p>Suite 6 4 The Crescent Westway Office Park Westville 3611 Telephone 265-1777</p> </div> <div style="width: 20%; text-align: center;">  </div> <div style="width: 40%;"> <p><b>TGC ENGINEERS</b>            Geotechnical &amp; Civil Engineers            Waste Disposal Consultants &amp; Project Managers</p> <p>P.O. Box 446 PAVILION 3611 Telefax 265-2727 E-mail: tgc@tgcengineers.co.za</p> </div> </div>			
PROJECT			
<h2 style="margin: 0;">STANDARD DETAILS</h2>			
TITLE			
<h2 style="margin: 0;">WATERMAIN DETAILS</h2>			
CONSULTING ENGINEER SIGNATURE: .....  PR. NO.: .....  DATE: .....		DESIGNED :    M.S.M.  DRAWN :        K.M.  CHECKED :    G.P.  SCALE :        1:1000 DATE :         14/02/2001	
REFERENCE NO. <h3 style="margin: 0;">TGC/10</h3>	FIGURE NO. <h3 style="margin: 0;">1</h3>	REVISION	