

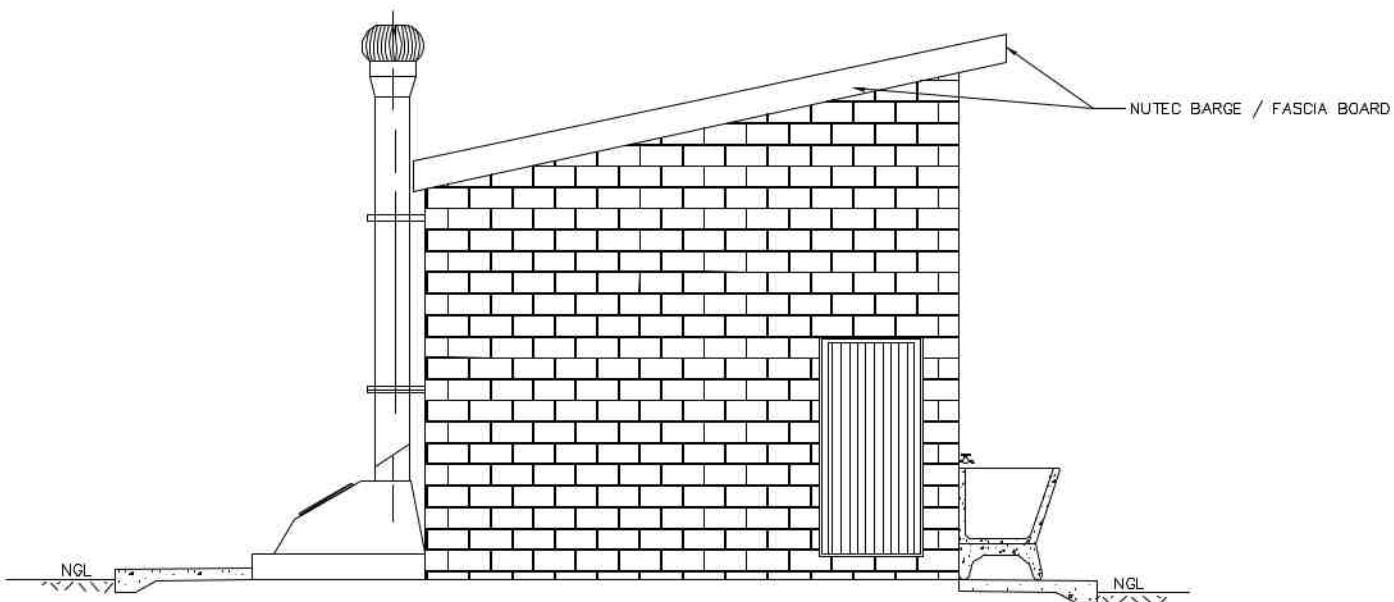
**NORTH ELEVATION**  
SCALE 1:75

**SECTION A-A**  
SCALE 1:75

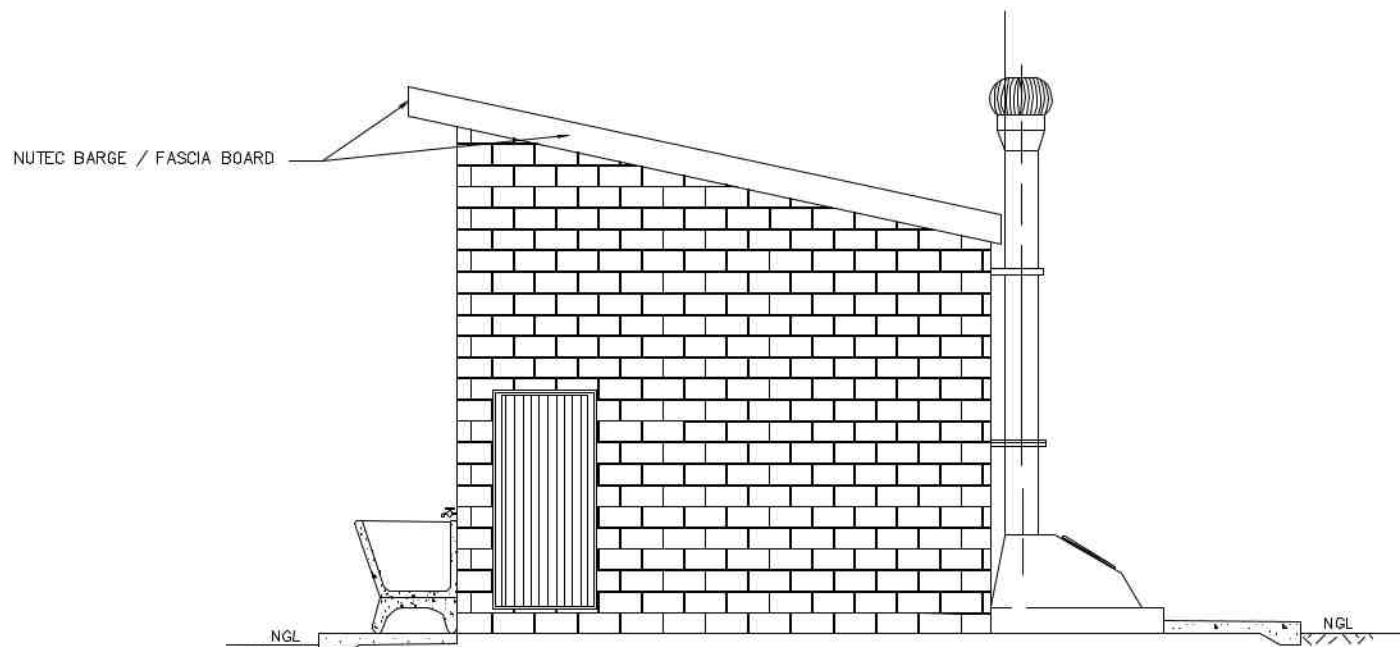
**FLOOR LAYOUT**  
SCALE 1:75

**SOUTH ELEVATION**  
SCALE 1:75

**TANK PLAN**  
SCALE 1:75



**EAST ELEVATION**  
SCALE 1:75



**WEST ELEVATION**  
SCALE 1:75

#### GENERAL NOTES:

- ALL WORK TO BE CARRIED OUT IN ACCORDANCE WITH THE NATIONAL BUILDING REGULATION AND SABS 0400 OF 1990
- CONTRACTOR TO READ ONLY FIGURED DIMENSION
- CONTRACTOR TO VERIFY ALL DIMENSION ON SITE BEFORE COMMENCING WITH ANY WORK.

#### NOTES AND SPECIFICATIONS:

##### GENERAL

- Use dimensions provided and do not sciae drawing.
- All work to comply with SANS, PW371 and SABS.
- All dimensions, levels and positions to be verified on site prior to construction.
- All concrete work to be as per Engineer's details and specifications.
- All pits to face North.
- All brickwork have brickforce at every 2nd course in pit lining and 3rd course in superstructure.

##### PIT EXCAVATION

- All stages of pit excavation to be inspected and approved by Engineer and signed off.
- All pit lining to be inspected by EnviroLoo Services before slab casting.

##### COMPACTION OF SURFACES

All ground surfaces receiving concrete floors / slab should be compacted to 150mm layers 93% ModAASHTO density before casting concrete.

##### CONCRETE WORKS

- All concrete to be as per Engineer's details and specifications.
- 25 MPa strength concrete to be used throughout construction:

Concrete Mixes: Proportions

Concrete Streght at 28 Days 25Mpa:

1 : 2 : 2 (mix proportion by volume)

1 bag cement : 0,08m3 Sand : 0,09m3 Stone (Volume/Bag)

385 kg cement : 820 kg sand : 960 kg stone (Mass/m3)

- Pre-cast concrete lintols to be used as support under top slab of pit.

- All concrete aprons to be 1000mm wide..

##### MORTAR

Mixed proportions to be:

1 cement : 3 sand

(i.e.1 bag cement : 3 wheelbarrows (37 litres) sand)

##### BRICKWORK

Sub-structure

- All pit lining / foundation brickwork to be solid NFP clay brick.
- All internal surface of pit lining to be painted with two coats black epoxy paint installing Enviro-Loo units.

Super-structure

- All external walls / partitions to be of clay face brick to SABS quality.
- All cubicle partition walls to be 3 courses above door height.
- All brickwork above door openings should have brickforce on evry course at least 3 courses.
- Air bricks: Standard 230X152mm terra-calts vermin proofed lourved air grating to be used above all window openings.

##### ROOF SHEETING

- 0.6mm kliplock chromadek roof sheeting.

##### ROOF TIMBER / CEILING

- All roof timbers to be machined SABS treated wood with three coats of approved wood preservative.
- Timber connections (Hurricane Clips) are required all intercessions between timber rafters and purlins.
- Sisalation is to be applied interval under all roof surfaces.

##### METALWORK

- All metalwork should be primed before installation.
- All steel window should have 6x20mm flat bar burglar proofing.

##### PLUMBING

- Double concrete wash trough to be used.
- All wash troughs should be connected to the school's water supply system and the waste water should be piped to a soakaway.
- The soakaway should be as per Engineer's detail and position to be determined on site.
- Only 20mm and galvanised pipework should be used as connection from wall to the discharge points.

##### GLAZING

- 6.28mm obscure safety glass
- Stainless steel mirrors size 350x450mm high.

##### PAINTING

- All paintwork to comply with SABS and PW371 specification.
- All steel window and door frames including doors and fascia / barge boards to be discharge points.

WINDOW SCHEDULE	
WINDOW NO.	NE1
CATALOGUE	NE1
FRAME	100 x 150mm HIGH STANDARD STEEL WINDOW FRAME
FRAME FINISH	SLIP FINISH INTERIORS IN PRE-PANES SURFACES WITH TWO COATS OF EPOXY UNDER COAT & TWO COATS OF PRIMER GOLDEN BROWN GLOSS ENAMEL PAINT IN STEEL
GLAZING	6.28mm OBSCURE SAFETY GLASS
NO. REQUIRED	2

ENTRANCE DOOR	
DOOR NO.	NE1
CATALOGUE	NE1
FRAME	100 x 150mm HIGH STANDARD STEEL DOOR FRAME
FRAME FINISH	SLIP FINISH INTERIORS IN PRE-PANES SURFACES WITH TWO COATS OF EPOXY UNDER COAT & TWO COATS OF PRIMER GOLDEN BROWN GLOSS ENAMEL PAINT IN STEEL
DOOR LEAF	100 x 150mm HIGH STANDARD STEEL DOOR LEAF
DOOR LEAF FINISH	SLIP FINISH INTERIORS IN PRE-PANES SURFACES WITH TWO COATS OF EPOXY UNDER COAT & TWO COATS OF PRIMER GOLDEN BROWN GLOSS ENAMEL PAINT IN STEEL
LOOK	3 LEVER MORTICE LOCK SET
ROMANCERY	100mm BRASS CHAIN HOOK

WINDOW SCHEDULE	
WINDOW NO.	NE1
CATALOGUE	NE1
FRAME	100 x 150mm HIGH STANDARD STEEL WINDOW FRAME
FRAME FINISH	SLIP FINISH INTERIORS IN PRE-PANES SURFACES WITH TWO COATS OF EPOXY UNDER COAT & TWO COATS OF PRIMER GOLDEN BROWN GLOSS ENAMEL PAINT IN STEEL
GLAZING	6.28mm OBSCURE SAFETY GLASS
NO. REQUIRED	4

DOOR SCHEDULE	
DOOR NO.	NE1
CATALOGUE	NE1
FRAME	100 x 150mm HIGH STANDARD STEEL DOOR FRAME
FRAME FINISH	SLIP FINISH INTERIORS IN PRE-PANES SURFACES WITH TWO COATS OF EPOXY UNDER COAT & TWO COATS OF PRIMER GOLDEN BROWN GLOSS ENAMEL PAINT IN STEEL
DOOR LEAF	100 x 150mm HIGH STANDARD STEEL DOOR LEAF
DOOR LEAF FINISH	SLIP FINISH INTERIORS IN PRE-PANES SURFACES WITH TWO COATS OF EPOXY UNDER COAT & TWO COATS OF PRIMER GOLDEN BROWN GLOSS ENAMEL PAINT IN STEEL
LOOK	3 LEVER MORTICE LOCK SET
NO. REQUIRED	2

#### NOTES:

#### LEGEND:

DATE	NO.	REVISION / VARIATIONS	KUT
08.11.22	1	ISSUED FOR TENDER	BS

#### CLIENT:



#### DEPARTMENT OF EDUCATION

CNR 113 BILLARD & 24 EXCELSIOR STREET  
POLOKWANE  
0700

#### IMPLEMENTING AGENT:



ROP 6 RHODES DRIFT OFFICE PARK  
RHODES DRIFT STREET  
BENDOR, POLOKWANE  
0699

Tel No.: (015) 291 2405

#### PROJECT ENGINEERS:



2 HEUWELKRUIN  
THABAZIMBI EXT 1  
THABAZIMBI  
0380

Tel No.: 079 978 4501  
Fax No.: 086 674 3237  
E-mail: admin@kutloconsulting.co.za

#### PROJECT:

LIMPOPO DEPARTMENT OF EDUCATION

WATER , SANITATION AND FENCING  
PROGRAMME

#### TITLE:

AQUAVILLE COMBINED SCHOOL  
F5 (GRADE 8-9 GIRLS)  
5x SEATS

#### DRAWING No.:

K1000-AC-008

#### SCALE:

1 : 75

#### DESIGNED:

BS

#### DRAWN:

KN

#### DATE:

NOVEMBER 2022

#### APPROVED:

BS

#### REV. NO.

1