

SYMBOL	DESCRIPTION	QTY	MAKE
FL 	SUITABLE LED FLOODLIGHT	8	TBC
WM	WALL MOUNT	8	
RM	RAIL MOUNT	0	
	EXISTING CABLE ROUTE		

SPECIAL NOTES:

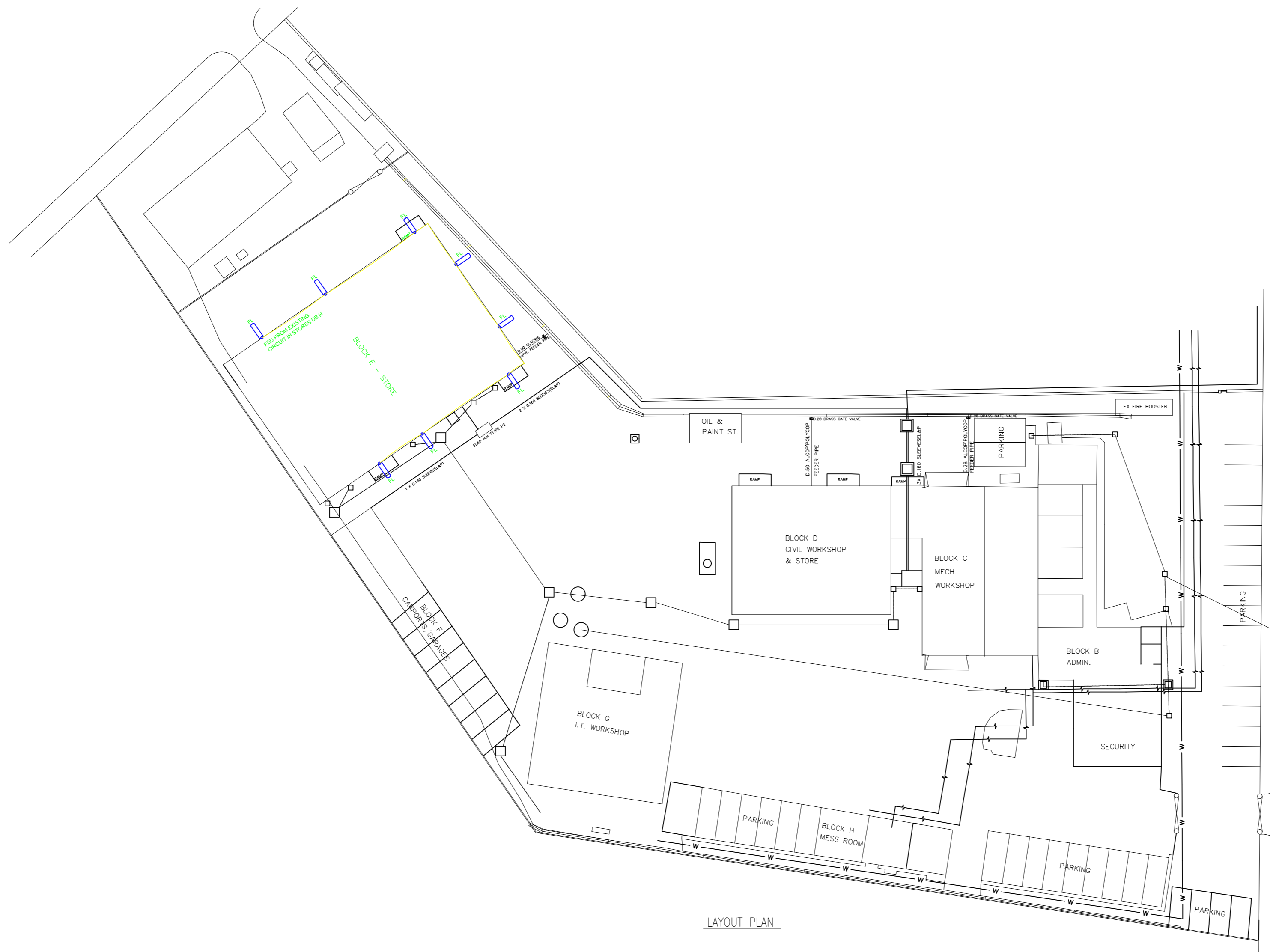
MINIMUM REQUIRED LIGHTING LUX LEVELS AS PER PL 682 SPEC

NOTES:

1. RACKING TO COMPLY WITH TPL SPECIFICATION PL727.
2. RACKING MATERIAL: GALVANISED STEEL LADDER RACK.
3. RACKING TO BE INSTALLED 300mm CLEAR OF FLANGES (TO ALLOW FOR FLOGGING ACCESS).
4. INSTRUMENT AND ELECTRICAL RACKS TO CROSS AT 90 DEGREES.
5. DOUBLE BANKING OF CABLES ON RACKS IS PERMITTED.
6. ONLY MAIN RACKING RETICULATION ROUTES ARE SHOWN. SECONDARY RACKING AND ANGLE IRON DROPPERS TO BE SITE RUN.
7. POSITION OF LIGHTS TO BE CONFIRMED ON SITE WITH TPL SITE AGENT AND APPROVED DESIGNS.

LEGENDS:

SEWER	
CABLE SLEEVES	
FEEDER PIPE	
POTABLE WATER	
ELECTRICAL	



LAYOUT PLAN

PROPOSAL

TRANSNET
pipelines
STORE LIGHTING LAYOUT
ALRODE WORKSHOP

REVISIONS			
PROJECT NAME LIGHTING UPGRADE			
DRAWN	W.D	REF.	
TRACED	CAD	DATE	15.11.21
CHECKED	K.N	APPROVED	Z.M
SCALE	NTS		
DRAWING No.	PL121783		REV