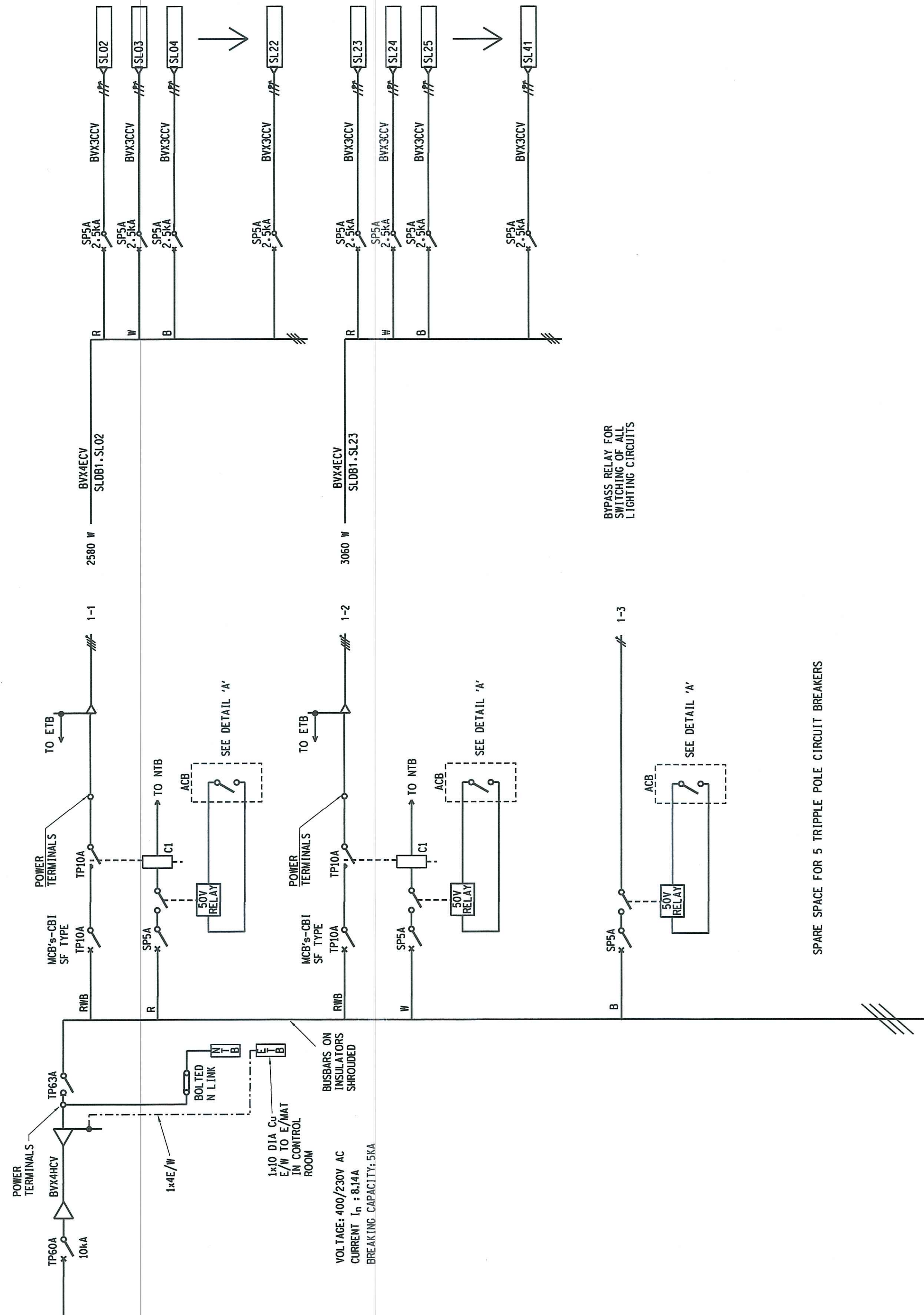
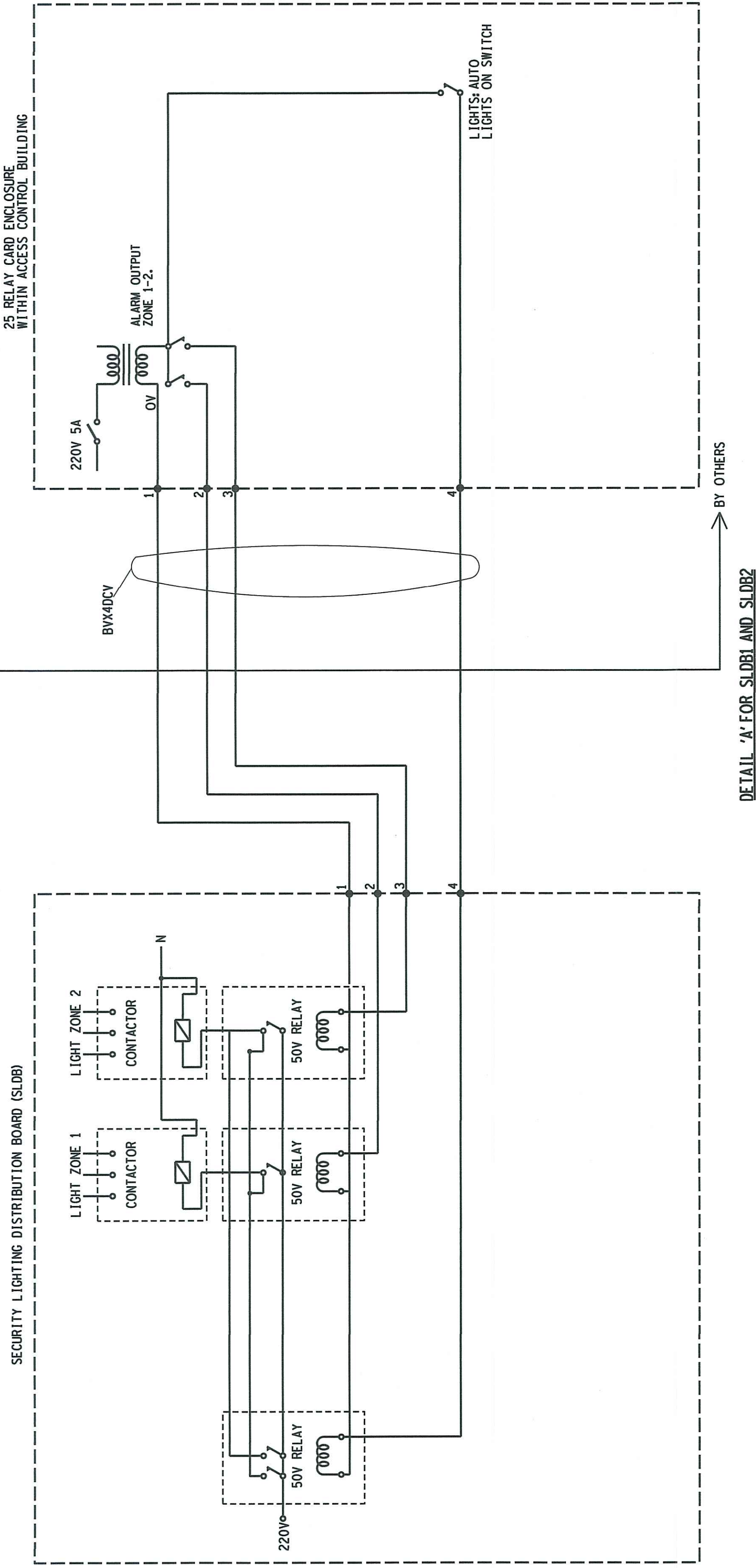


SECURITY LIGHTING DISTRIBUTION BOARD 1				SECURITY LIGHTING DISTRIBUTION BOARD				SECURITY LIGHTING DISTRIBUTION BOARD 2			
WIRING		CABLE TYPE		PHASES		LOCAL SWITCH		CABLE TYPE		LOCAL SWITCH	
WIRING		CABLE TYPE		PHASES		LOCAL SWITCH		CABLE TYPE		LOCAL SWITCH	
WIRING		CABLE TYPE		PHASES		LOCAL SWITCH		CABLE TYPE		LOCAL SWITCH	



ELECTRICAL LEGEND:
(ADDITION TO DGN 0.00/3886)

- CIRCUIT BREAKER
- SWITCH-DISCONNECTOR
- CABLE GLAND WITH EARTH TAG
- EARTHSTUD
- TERMINALS



- NOTES:
- THE SECURITY LIGHTING ELECTRICAL INSTALLATION WORK SHALL BE IN ACCORDANCE WITH:
 - 1.1. SANS 1014
 - 1.2. SANS 1014
 - 1.3. SANS 1014
 - FOR SECURITY LIGHTING DISTRIBUTION BOARD, SLDB:
 - 2.1. ALL CABLE ENTRIES SHALL BE FROM BOTTOM OF SLDB USING CABLE GLANDS
 - 2.2. ALL CABLE ENTRIES SHALL BE FROM BOTTOM OF SLDB USING CABLE GLANDS
 - FOR ENGRAVING & LABELLING REQUIREMENTS REFER TO DGN 0.00/5007.
 - CABLE GLANDS SHALL BE FIXED TO GLAND PLATE AT MAST TERMINATION BOARD IN MAST & BONDED VIA
 - ALL CABLE ENTRIES TO EXISTING EARTH STUD ON MAST
 - 5.1. LABELLING
- a. THE CONSECUTIVE NUMBERING FOR THE LABELLING UNDER THE DEVICES SHALL BE PROVIDED, ON THE INSIDE OF THE DOOR

REFERENCE DRAWINGS				EING13P01-SE-D46			
REVISION DESCRIPTION		DATE		2		0	
Eskom		Eskom Holdings SOC Ltd		Reg No 2002/05527/20		INGAGANE	
SECURITY LIGHTING SLOBI AND SLOB2		400/230V AC SCHEMATIC		AND CABLE BLOCK DIAGRAM		EING13P01-SE-D46	
DRAWN BY		DATE		SCALE		AS SHOWN	