

The specs for the gauze cages are

Thrips screening fabric. Manufactured from HDPE monofilaments in a plain weave with apertures of 0.5mm². Available from Climatex (Mike Fletcher 082 8955938).

I have checked and Climatex still supply it and that is still Mike's number so manufacturers can contact him.

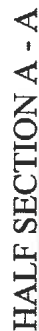
10 off 1 hole plant cages in accordance with:

Drg. 076 – Plant cage assy.

Drg. 079 – Plant cage cover frames & drilling details.

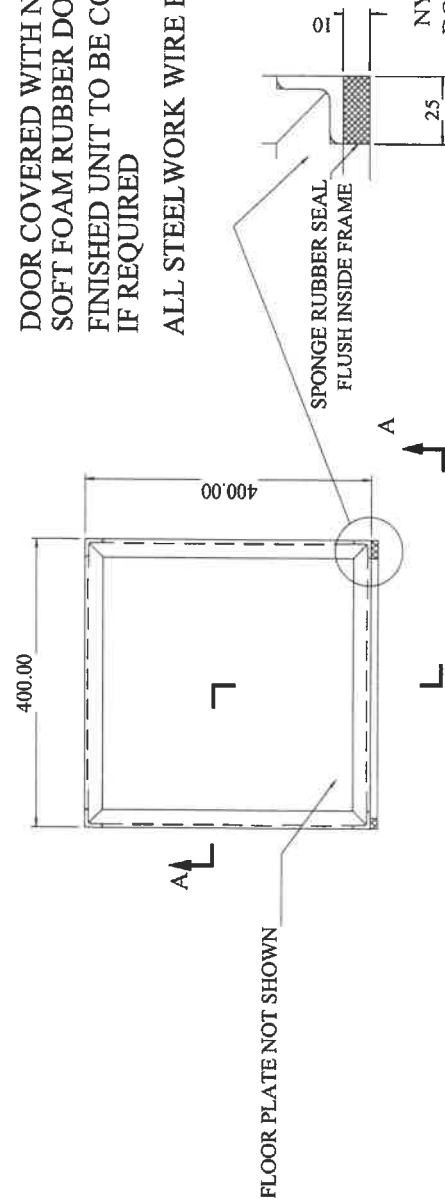
Drg. 077 – Hinged door detail.

Drg. 070 – Door detail.



HALF SECTION A - A

ALL ANGLES 25 x 25 x 3 FULL WELDED & TO BE FLAT & TRUE
SIDES & BACK COVERED WITH NYLON MESH UNDER RIVETTED FRAMES
TOP COVERED WITH CLEAR FILM UNDER RIVETTED FRAMES
FLOOR PLATE FIXED WITH 3mm POP RIVETS
DOOR COVERED WITH NYLON MESH GLUED ON INSIDE USING 'GLUE SCREWS'
SOFT FOAM RUBBER DOOR SEALS GLUED TO FRAME WITH WATER PROOF GLUE
FINISHED UNIT TO BE COMPLETELY INSECT PROOFED - SEAL WITH SILICONE
IF REQUIRED
ALL STEELWORK WIRE BRUSHED & POWDER COAT PAINTED WHITE GLOSS



SECTION B - B

NYLON & PLASTIC CLADDING DRG. 086_1
DOOR SEAL & FITTING DETAIL DRG. 070_1
CAGE FRAMES & DRILLING DETAIL DRG. 079
HINGED DOOR DETAIL DRG. 077

P. P. R. I.

1 HOLE
PLANT CAGE ASSY.

DRAWN: W.A.S.

DATE: 05/08/07

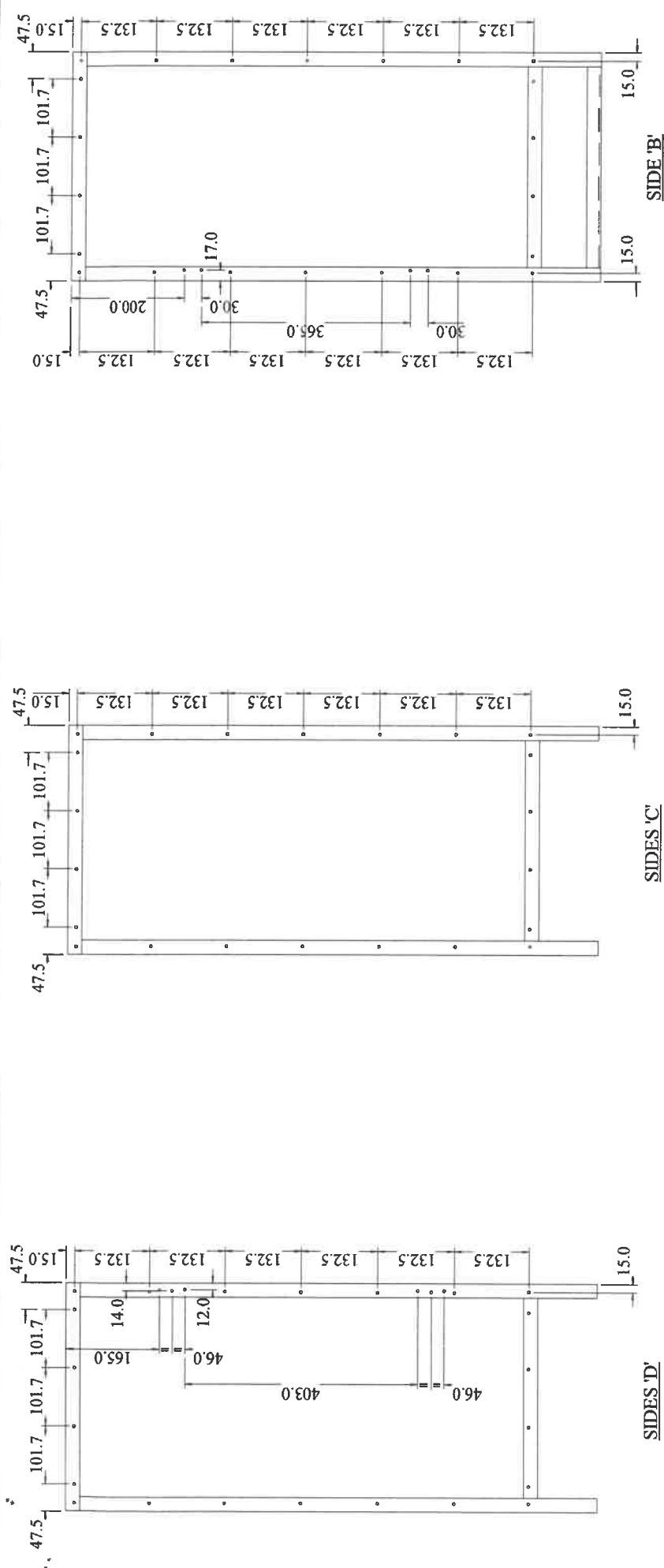
SCAF: 1.7582

DRG No:

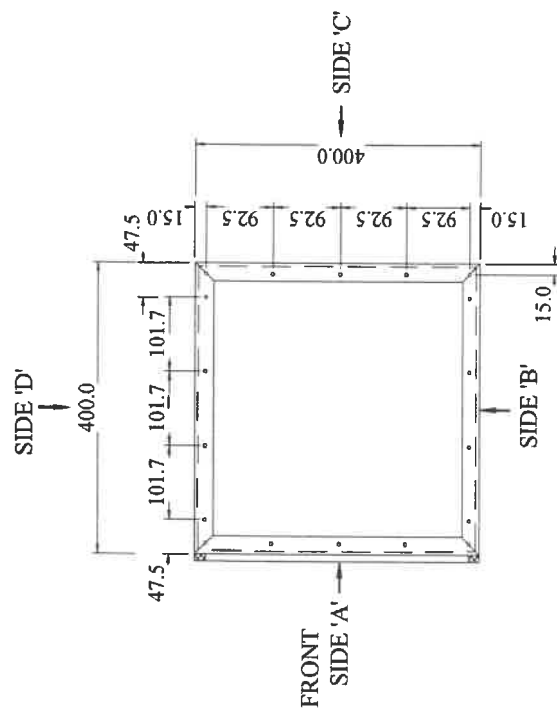
076

HINGED DOOR DETAIL DRG. 077

A3



ALL HOLES DRILLED Ø4.5 FOR Ø4 POP RIVETS
DRILLING JIGS TO BE MADE & USED FOR ALL DRILLING TO ENSURE
UNIFORMITY & EASE OF ASSEMBLY

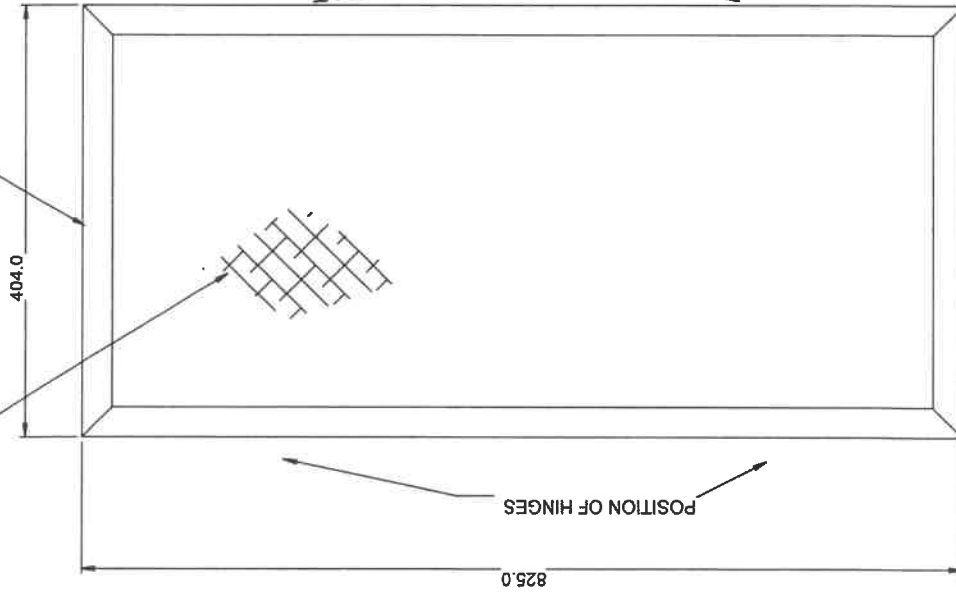


CAGE FRAME STRIPS DRG. 081
DOOR SEAL & FITTING DETAIL DRG. 070_1
1 HOLE PLANT CAGE ASSY. DRG. 076
HINGED DOOR DETAIL DRG. 077

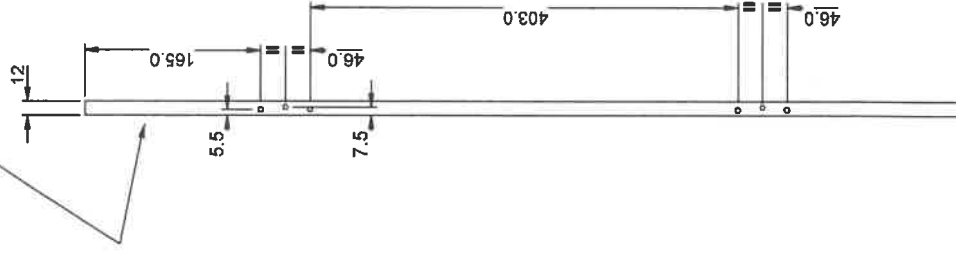
P. P. R. I.

1 HOLE PLANT CAGE DRILLING DETAILS

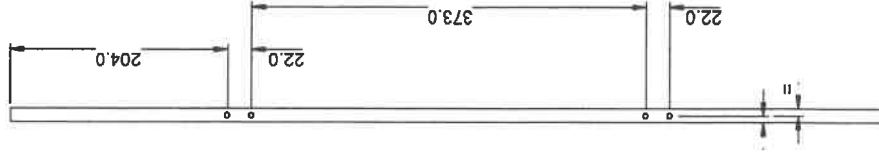
NYLON MESH COVER FIXED WITH 'GLUE SCREWS' OR SIMILAR
12 x 25 SQ. HOLLOW BAR FRAME



NYLON GAUZE THIS SIDE



VIEW ON 'A'



VIEW ON 'B'

ALL HOLES DRILLED Ø4.5 FOR Ø4 POP RIVETS USING DRILLING JIGS
FINISHED FRAMES TO BE SQUARE & FLAT TO ENSURE GOOD INSECT PROOF SEAL
FRAMES TO BE WIRE BRUSHED & POWDER COAT PAINTED WHITE GLOSS
FABRICATOR TO SUPPLY HINGES FITTED TO CAGE BUT DOOR TO BE
DRILLED FOR HINGES & HINGES TO BE FITTED AFTER CLADDING

P. P. R. I.

1 HOLE PLANT CAGE
HINGED DOOR DETAIL

MODIFIED HINGE & LATCH DETAIL DRG. 070_1
PLANT CAGE ASSY. DRG. 076

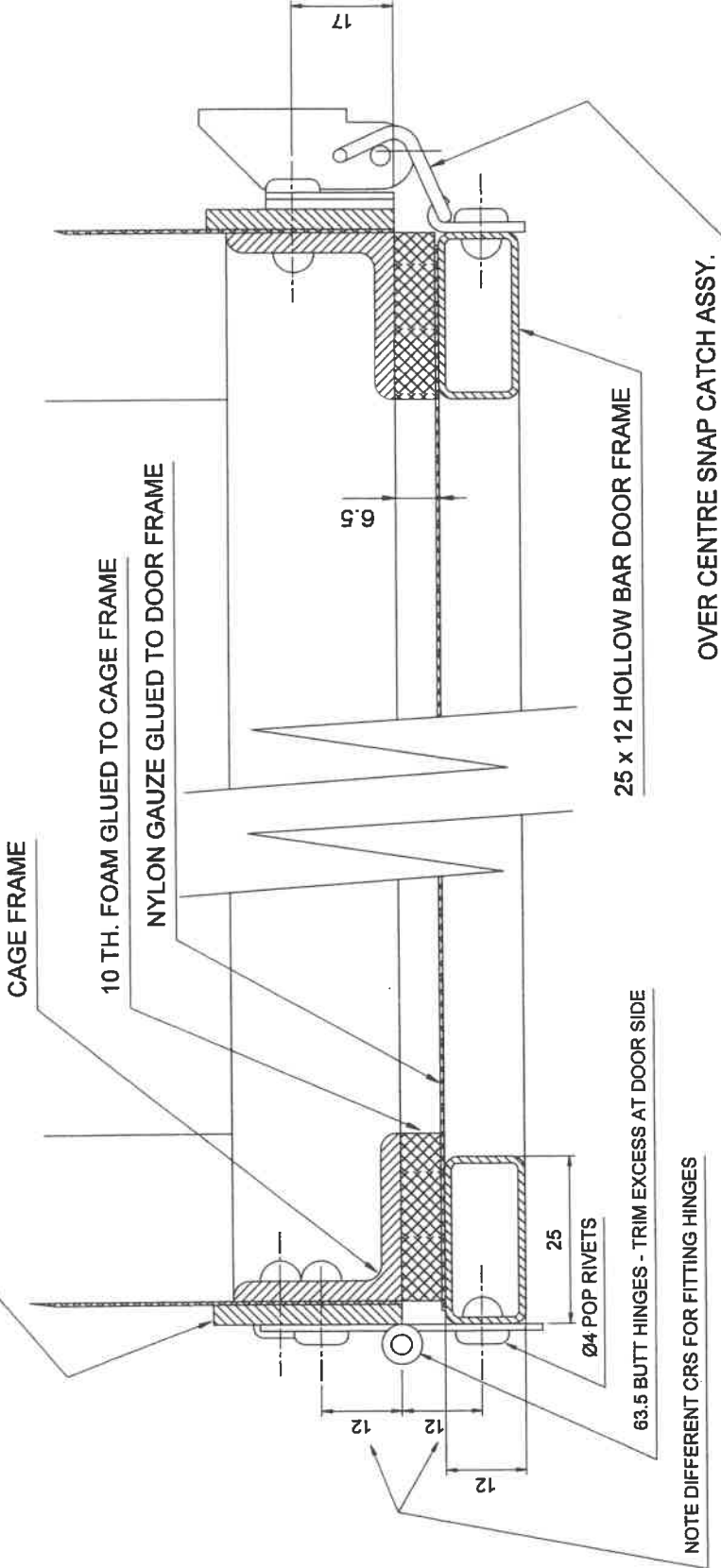
DRAWN: WAS. DATE: 05/08/07 SCALE: 1:5

DRG No:

077

A3

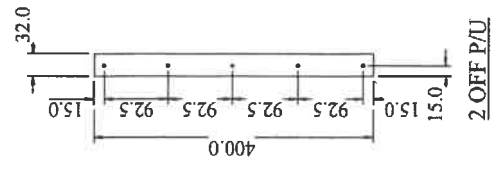
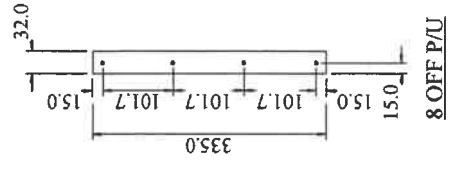
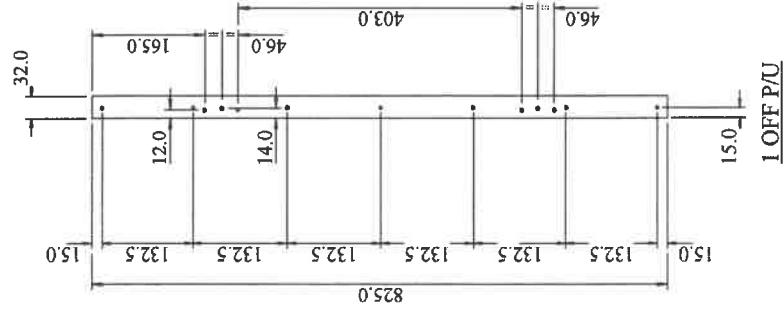
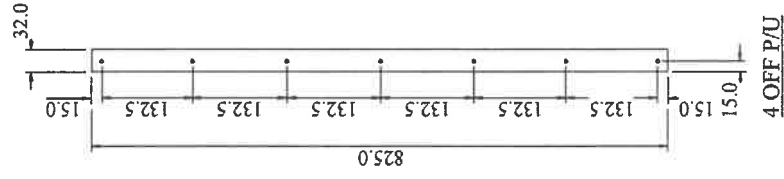
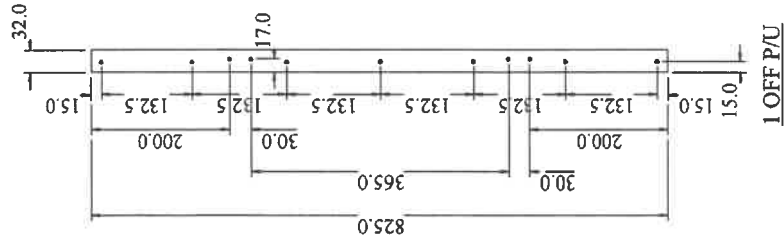
32 WIDE x 3 TH. GAUZE FIXING FRAMES



SECTION THRO DOOR

- P. P. R. I. -			
DOOR DETAIL FOR 1, 2 & 4 HOLE PLANT CAGES			
DRAWN: V/A.S.	DATE: 05/08/07	SCALE: 1: 1.3	A3
DRG. No 070_1			

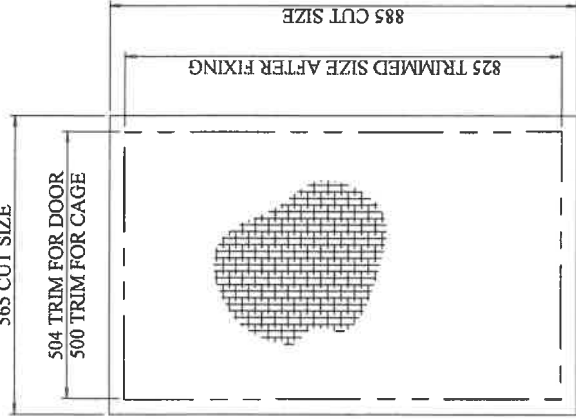
- CLADDING DETAILS DRG 086_1
- 1 HOLE CAGE FIXING FRAMES DRG 081
- 2 & 4 HOLE CAGE FIXING FRAMES DRG 080
- 1 HOLE HINGED DOOR ARRGT. DRG 077
- 2 & 4 HOLE HINGED DOOR ARRGT. DRG 071
- 1 HOLE PLANT CAGE ASSY DRG 078
- 1 HOLE CAGE FRAMES & DRILLING DETAILS DRG 079
- 2 & 4 HOLE PLANT CAGE ASSY DRG 075
- 2 & 4 HOLE CAGE FRAMES & DRILLING DETAILS DRG 078



FRAME STRIPS
MATL: 32 x 3 ALUMINIUM FLAT BAR

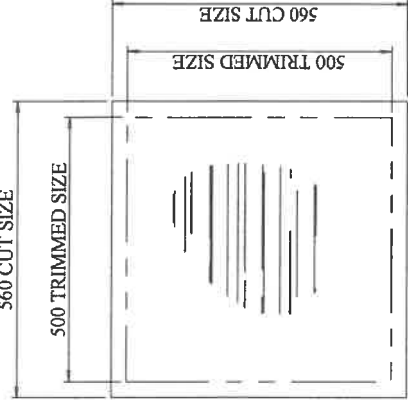
ALL HOLES DRILLED Ø4.5 FOR Ø4 POP RIVETS
DRILLING JIGS TO BE MADE & USED FOR ALL DRILLING TO ENSURE
UNIFORMITY & EASE OF ASSEMBLY

- P.P.R.I. -			
CAGE FRAME STRIPS			
1 HOLE CAGE			
DRAWN: WAS	DATE: 05/10/28	SCALE: 1 : 7.5	A3
DRG No	081		



CAGE DOOR

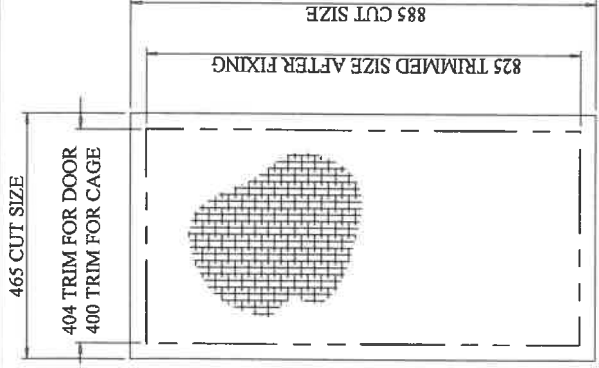
MATL: PSYLLA SCREEN
1 OFF PER CAGE FOR CAGE DOOR
3 OFF PER CAGE FOR CAGE



CAGE TOP

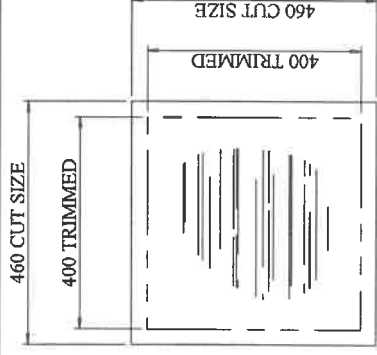
NYLON MESH

CLADDING FOR 2 & 4 HOLE CAGES



CAGE DOOR

MATL: PSYLLA SCREEN
1 OFF PER CAGE FOR CAGE DOOR
3 OFF PER CAGE FOR CAGE



CAGE TOP

NYLON MESH

CLADDING FOR 1 HOLE CAGES

NYLON MESH
PSYLLA SCREEN NYLON EX
CLIMATEX cc P.O. BOX 155
MULDERSDRIFT 1747
TEL. 011 662 1977
FAX 011 662 1316
CELL 082 895 5938

- P.P.R.I. -

**CLADDING DETAILS
FOR GROWTH CAGES**

DRAWN: W.A.S. DATE: 05/11/02 SCALE: 1 : 10
DRG No 086 1