

To	SCM
From	PRASA CRES-SGR: PMU
Date	SEPT 2022
Subject	REQUEST FOR ABT CONSTRUCTION (SHIPPING CONTAINERS) INTO STATION FACILITIES – KNIGHTS TRAIN STATION.

PROJECT BRIEF

The scope of works included herein is to obtain a service provider for the Alternative Building Technology, (ABT) for Knights Train Station Facilities. The Shipping Containers are a preferred ABT as an alternative measure for Metrorail staff to perform customer services supporting the travelling commuters such as ticket sales, and other important functions.

DESCRIPTION OF WORK

The self-contained units are currently existing and are owned by PRASA. They are sized as follows 2.5 in width, and standard lengths varying from 3 to 12m. All of these come standard with a minimum 12 month warranty. Manufacturing process of the containers need to comply with ISO 9001:2015 and OSHAS 18001:2007, with a minimum rated lifespan of 20 years.

The appointed suppliers will design, prepare and customize each container by fitting all the contents as per PRASA requirement listed in the scope of work, deliver them to Knights Train Station. This is to enable the station to operate and resume services.

Note that the ABT contractor needs to install the containers in the desired configuration including providing the required structural supports of the combined containers. All working and shop drawings to be submitted for approval and should be signed by a competent person registered with ECSA.

ADDITIONAL SERVICES and REQUIREMENTS

The service provider will be required to undertake the following responsibilities:

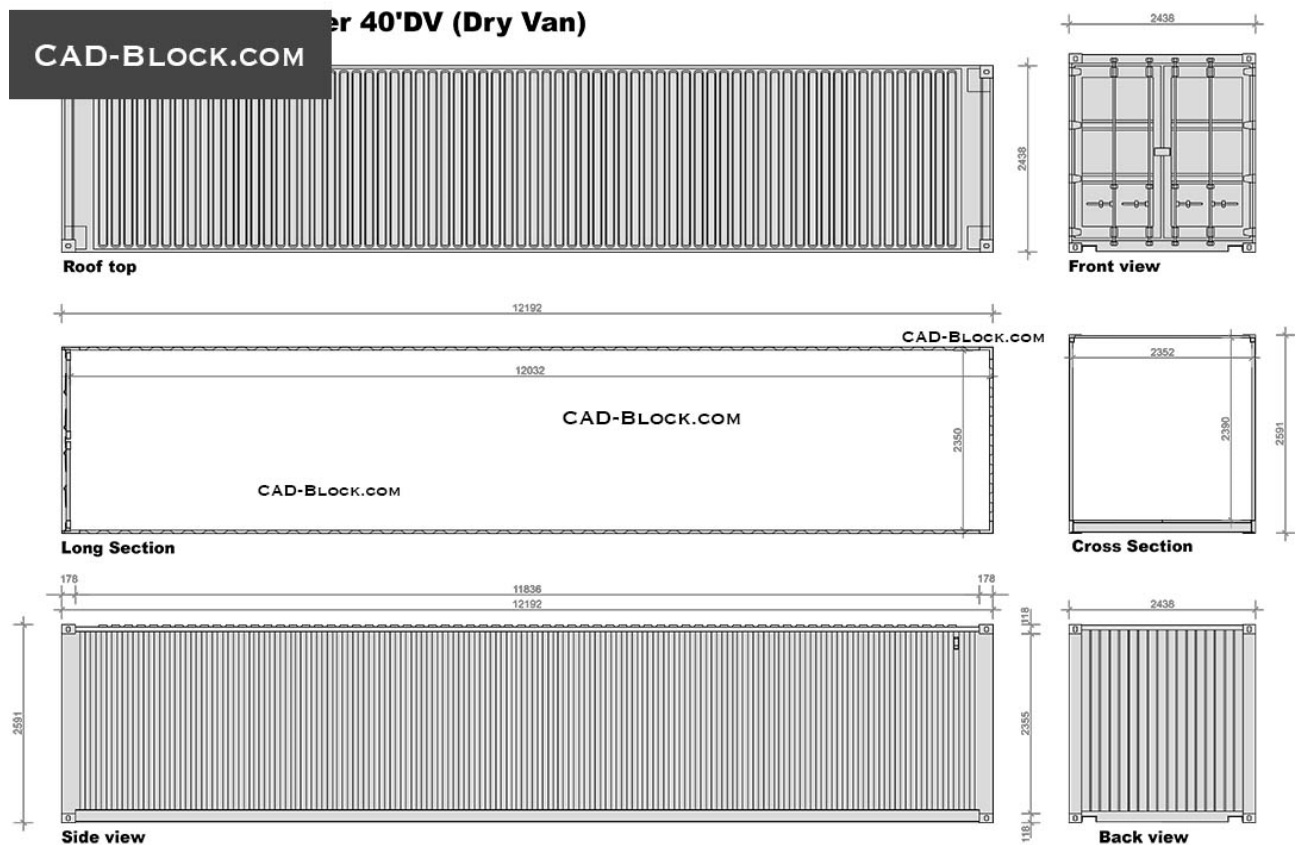
- Prepare shop drawings of the containers to PRASA specifications and get approval for reconfiguration from PRASA.
- The service provider will be required to collect the containers from various locations in Gauteng and reconfigure at their own location/facility/depot.
- Will be required to prepare the site where the containers will be received prior to installation.

SCOPE OF WORKS

The scope of work covers the supply, delivery and installation of self-contained, tailor-made, fully kitted containers to be delivered to Knights Train Station. The containers will address the following needs in line with the Bills of Quantities Provided:

- Ticket Sales/ admin office
- Storerooms (Equipment room & Cleaner's storeroom)
- Ablutions for staff and commuters
- Stairs & Signage
- TVP's
- Staff breakroom & kitchenette.
- Staff and Security accommodation.
- Guardroom

Fit out ship containers to the following requirements:





prasa cres

CORPORATE REAL ESTATE SOLUTIONS

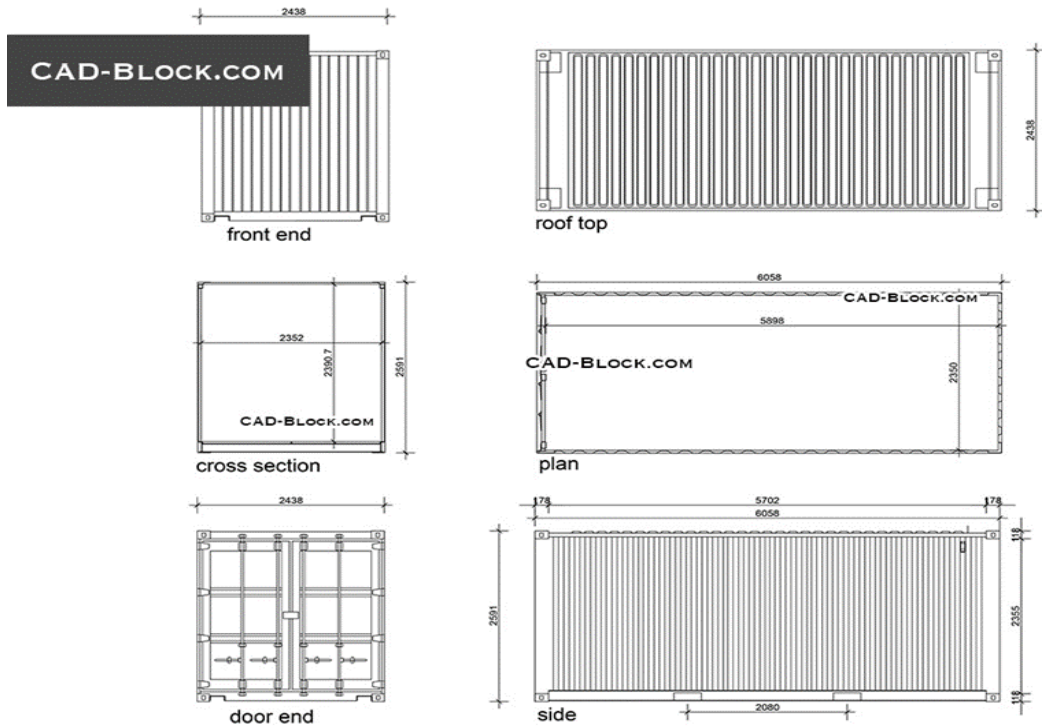
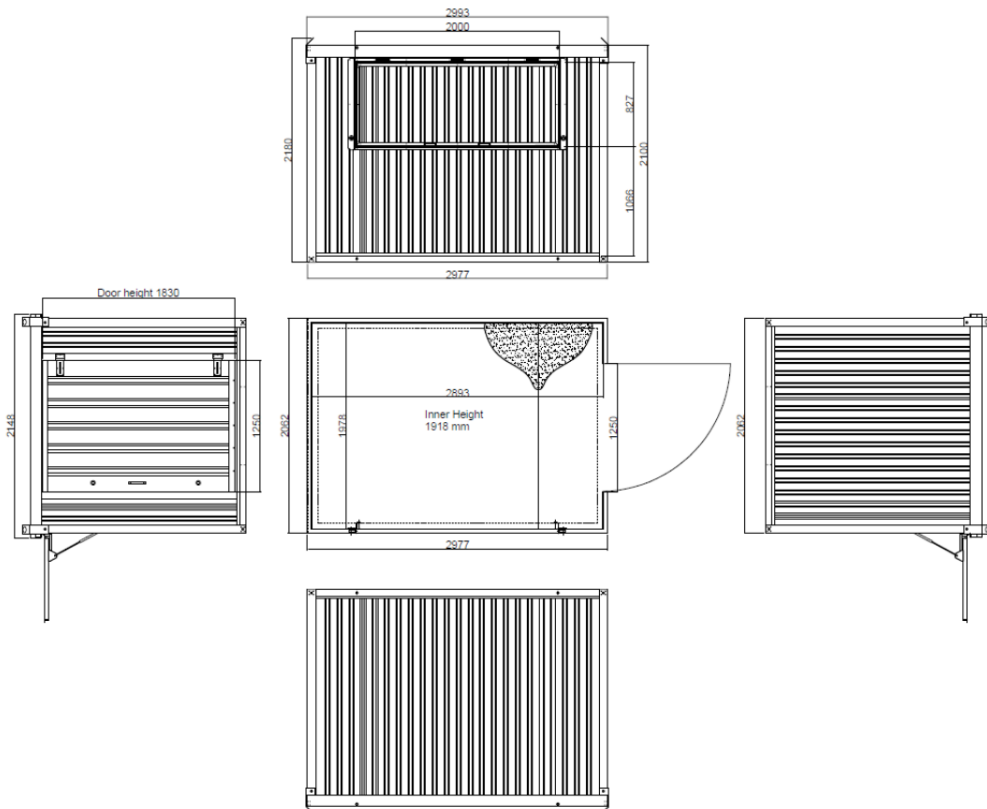


Figure 5.1.1 above



In line with the above designs, the below are the direct fixtures and characteristics of the containers;

Container configurations

Double Storey Units – 3-meter, 6-meter and 12-meter units;

The units are to be installed where the present vandalized buildings are situated, however owing to the vandalism of the old buildings, new ABT containers are proposed. 18 containers will be used, On the ground floor various sizes containers will be designed for the ticket office, Storerooms, ablutions, stairs and ticket verification points; and on the first-floor various sizes containers will be used for the design of station managers office, staff breakroom, kitchenette, staff accommodation, security accommodation and a guard room. The containers will be linked with covered walkways on both the ground floor and first floor. The precinct will be secured with a use of a brick wall in some areas and an Anti-climb fence and gate will be installed as a security measure.

- Installing of bullet resistant glass
- Installing of Anti Bandit (bullet resistant doors)
- Installation of counters
- Installation of steel lined walling for treasury
- Installing of insulation wall and ceiling
- Installing of vinyl flooring
- Installation of Air Conditioning
- Installation of roller shutter for windows and doors – electronic
- Installation of electrical work – 220V wiring in conduits, DB and main connection
- DB Board with earth leakages & circuit breakers
- Fluorescent lights, Bowl light - JD 90, Single plug points, Double plug points, Light switches and External lights – Bulkhead
- Branding and signage (Based on PRASA's Blueprint Document)
- Directional and Statutory signage
- Providing Fire Extinguishers
- Providing new drainage



✓ **UNITED LIFE FUND**





prasa cres

CORPORATE REAL ESTATE SOLUTIONS

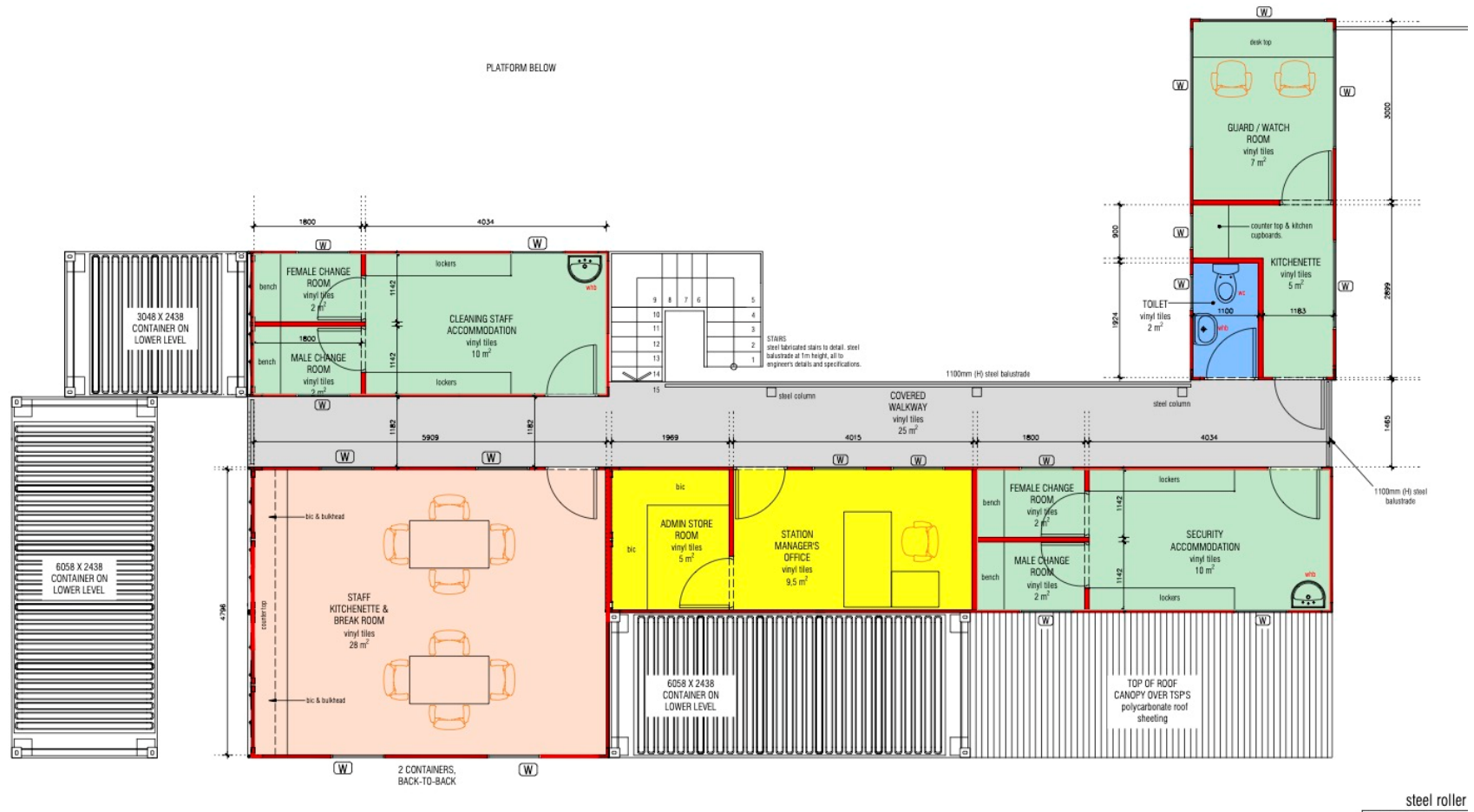
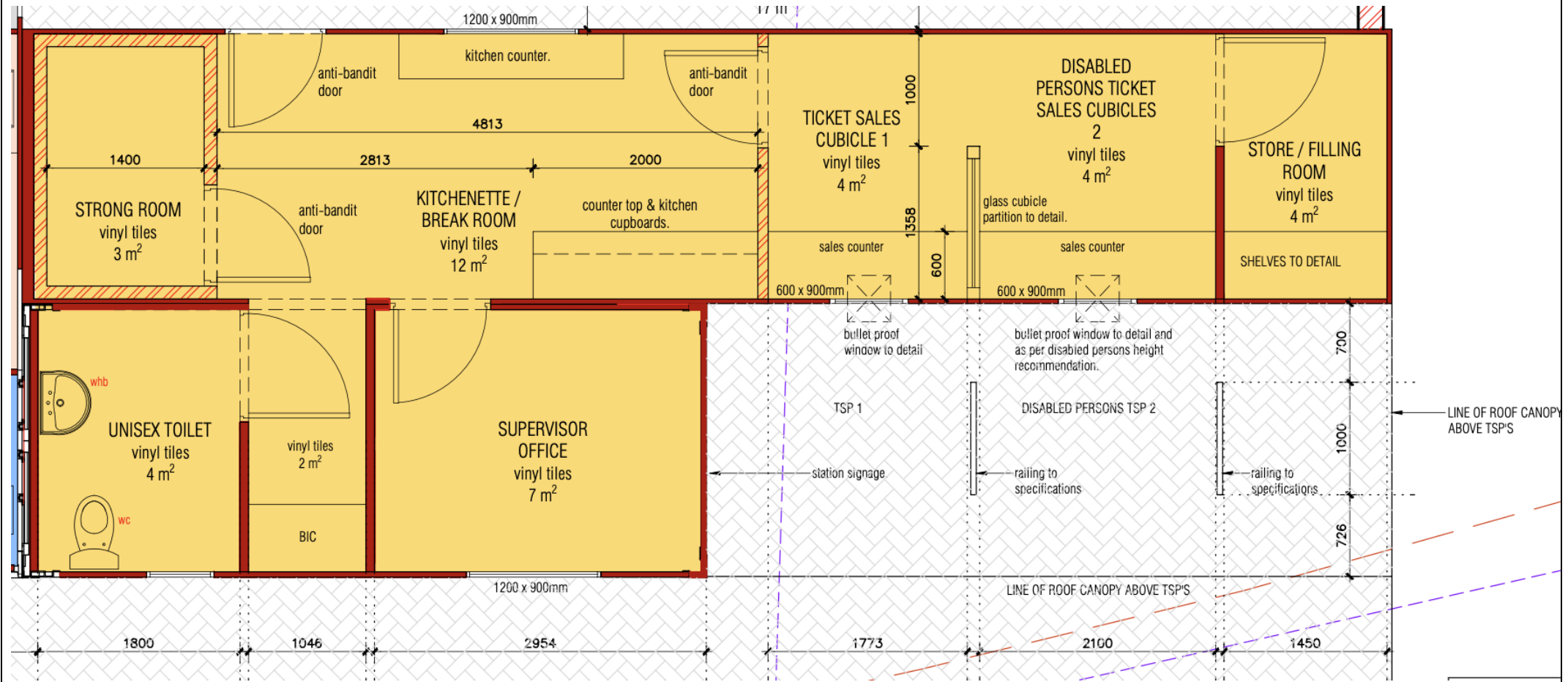


Figure 2: ABT FIRST FLOORPLAN



GROUND FLOOR: ADMINISTRATION BUILDING



BUILDING / FACILITY	FUNCTIONALITY SCOPE / DETAILS
<p>TOTAL 2 CONTAINERS COMBINED.</p> <p>Container 1 (12m x 2,4m) – Ticket Office. Strong room, Breakroom / Kitchenette, Ticket Sales Cubicles & Store / Filling Room.</p> <p>Container 2 (6m x 2,4m) – Ticket Office. Unisex Paraplegic Toilet, Supervisor Office & Lockers.</p> <p>Ticket Sales Point (TSP) – Canopy cover.</p>	<p>Combined containers fixed to foundation to Engineer's specifications and details.</p> <p>Containers to be braced and supported on steel columns and beams to Engineer's specifications and details.</p> <p>Provide insulation in External wall panels.</p> <p>Walls in Ticket Office to have mild steel security sheet embedded in panel. Mild steel security lining to be full height.</p> <p>Provide ceiling.</p> <p>Interior Walls: 90mm Dry wall with Flexible Mineral Insulation.</p> <p>Provide floor vinyl tiles with timber skirting. Skirting in kitchenette and Unisex Toilet to be taken 200mm up wall.</p> <p>1 x 1200 (w) x 900 (h) bullet proof window, fitted with roller shutter.</p> <p>2 x 600 (w) x 900 (h) bullet proof windows, fitted with roller shutters.</p> <p>1 x external anti-bandit door.</p> <p>2 x internal anti-bandit door.</p> <p>2 x standard internal door.</p> <p>1 x paraplegic door.</p> <p>Provide a biometric system to entrance door.</p> <p>Allow for universal access (ramps, etc.) to administration office main entrance.</p> <p>Paint all container exterior & internal walls, as per PRASA recommended colours.</p> <p>Waterproofing to any exposed Shipping Container top / roof, as per Engineer's or specialist specification.</p>



	<p>Provide signage, exterior and interior light fittings. Provide plugs and light switches.</p> <p>Provide DB, install 32A isolator for each air conditioning unit and 30A isolator for hydroboiler.</p> <p>Roof cover to Ticket Sales point area as indicated on drawings.</p> <p>Provide drainage to all new sanitary ware</p> <p>Provide cold water to all new sanitary ware</p> <p>Install new hydroboil in the staff kitchen</p> <p>Fire Hose reel to be installed.</p> <p>4.5 kg DCP Fire Extinguisher to be installed</p> <p>Associated fire equipment signage</p> <p>Install Inverter Split unit for Air Conditioning for Offices and Ticket Booth(Cubicles).</p>	
Container 1 (12m x 2,4m).	<p>Strong Room.</p> <p>3 m²</p>	<p>Strong room to have brick walls and concrete slab over.</p> <p>Strong Room to receive class 2 Security door.</p> <p>Cash drop-safe minimum size: 1,3m x 0,7m</p> <p>Office safe by specialist in strong room.</p>
	<p>Kitchenette / Break Room.</p> <p>12 m²</p>	<p>Granite countertop 1: 2000mm x 400mm (eating area).</p> <ul style="list-style-type: none"> - No Cabinets below / above counter. <p>Granite countertop 2: 2000mm x 600mm (kitchenette).</p> <ul style="list-style-type: none"> - Cabinets below counter & above counter (bulkhead cabinets).
	<p>2 x Ticket Sales Booths.</p> <p>8 m²</p>	<p>Granite countertop 3: 1800mm x 600mm (ticket sales cubicle 1).</p> <p>Granite countertop 4: 2100mm x 600mm (ticket sales cubicle 2).</p> <p>Provide 3x cash drawers and money counting machines.</p>



		<p>Provide under counter shelving.</p> <p>Provide above and below counter power skirting with plug sockets and below counter 220V plug socket.</p> <p>Provide cash transfer trays.</p> <p>Install cctv per booth for security</p>
	<p>Shelves to Store / Filling room.</p> <p>4 m²</p>	<p>Provide shelving from floor to ceiling with min. 5 compartments.</p>
Container 2 (6m x 2,4m).	<p>1 x 1200 (w) x 900 (h) bullet proof window, fitted with a roller shutter.</p> <p>1 x 600 (w) x 900 (h) bullet proof window, fitted with a roller shutter.</p> <p>2 x standard internal door.</p>	
	<p>Unisex Toilet.</p> <p>4 m²</p>	<p>1 x wc & 1 x whb.</p> <p>Provide disabled toilet associated accessories & all other toilet accessories.</p> <p>Install blow dryer and blow dryer isolators for ablutions</p>
	<p>Lockers.</p> <p>2 m²</p>	<p>Provide 4 x stacked, build-in lockers.</p>
	<p>Supervisor Office.</p> <p>12 m²</p>	

Ticket Sales Point (TSP).

75mm DIA. Stainless steel queuing railing as per PRASA BLUEPRINT.
 Disabled persons sales window as per PRASA height recommendation.
 Roof cover over Ticket Sales Points.
 Signage and vandal and water resistant light fittings.
 Allow universal access (ramps, etc.)
 Provide cctv for Security

Floor Plan Details:

- EQUIPMENT ROOM:** 1200 x 600mm, vinyl tiles, 14 m²
- STAFF - MALE TOILETS:** vinyl tiles, 8 m²
- STAFF - FEMALE TOILETS:** vinyl tiles, 6 m²
- PASSAGE:** vinyl tiles, 7 m²
- CLEANER'S STORE ROOM:** vinyl tiles, 7 m²
- UNISEX PARAPLEGIC TOILET:** vinyl tiles, 4 m²
- PASSAGE:** vinyl tiles, 3 m²
- STAFF ENTRANCE**
- new WC**
- new bic**

Dimensions (mm): 1200 x 600mm, 1358, 1000, 1286, 2538, 1137, 2082, 1700, 800, 800, 800, 760, 775, 875, 800, 2575, 6055, 3284, 1206, 2358.

BUILDING / FACILITY	FUNCTIONALITY SCOPE / DETAILS
<p>TOTAL 3 CONTAINERS COMBINED.</p> <p>Container 3 (6m x 2,4m) – Equipment Room.</p> <p>Container 4 (6m x 2,4m) – Passage, Cleaner's Storeroom & Unisex Paraplegic Toilet.</p> <p>Container 5 (6m x 2,4m) – Male & Female Staff Toilets.</p>	<p>Combined containers fixed to foundation to Engineer's specifications and details.</p> <p>Containers to be braced and supported on steel columns and beams to Engineer's specifications and details.</p> <p>Provide insulation in External wall panels.</p> <p>Walls in Equipment Room and Cleaner's Storeroom to have mild steel security sheet embedded in panel.</p> <p>Mild steel security lining to be full height.</p> <p>Provide ceiling.</p> <p>Interior Walls: 90mm dry wall.</p> <p>Provide floor vinyl tiles with timber skirting. Skirting to be taken 200mm up wall.</p> <p>1 x 4000 (w) x 400 (h) natural anodized aluminum window, fitted with burglar proof bars (Container 3).</p> <p>7 x 400 (w) x 600 (h) natural anodized aluminum window, fitted with burglar proof bars (Container 5).</p> <p>1 x 1200 (w) x 600 (h) natural anodized aluminum window, fitted with burglar proof bars (Container 4)).</p> <p>1 x steel double doors (Container 3), fitted with a security gate.</p> <p>3 x standard internal door.</p> <p>1 x paraplegic toilet door.</p> <p>4 x toilet cubicle doors.</p> <p>1 x Mentis or similar Grating Recta Grid double doors (Passage).</p> <p>Allow for universal access (ramps, etc.).</p> <p>Paint all containers exterior & internal walls, as per PRASA recommended colours.</p> <p>Waterproofing to any exposed Shipping Container top / roof, as per Engineer's or specialist specification.</p> <p>Provide signage, exterior and interior light fittings. Provide plugs and light switches.</p>



	<p>Install DB</p> <p>Provide drainage to all new sanitary ware.</p> <p>Provide cold water to all new sanitary ware.</p> <p>4.5 kg DCP Fire Extinguisher to be installed.</p> <p>Associated fire equipment signage</p> <p>electric hand drying unit isolator</p>	
Container 3 (6m x 2,4m)	Equipment Room. 14 m ²	<p>Provide 300mm raised floor to detail.</p> <p>Door min. clearance 1500mm (w) x 2100mm (h).</p> <p>Equipment Room to have secure 24-hour access controlled external door.</p> <p>Provide 600 x 600 43 U "19" Rack.</p> <p>Provide fire detection & alarm.</p> <p>Room to be air conditioned.</p> <p>DB to PRASA specialist.</p>
Container 4 (6m x 2,4m)	Cleaner's Storeroom. 7 m ²	<p>Provide wash trough with tap, slop hopper & floor drain.</p> <p>Provide 500mm wide shelving on walls to detail.</p> <p>Door to have a minimum clearance of 1500mm (w) x 2100mm (h).</p> <p>Provide aluminum louvres in door.</p>
	Unisex Paraplegic Toilet. 4 m ²	<p>1 x wc & 1 x whb.</p> <p>Provide a lever tap (cold water only), electric hand drying unit, mirrors (tile-in), toilet roll holder, soap dispenser, bin & floor drain.</p>





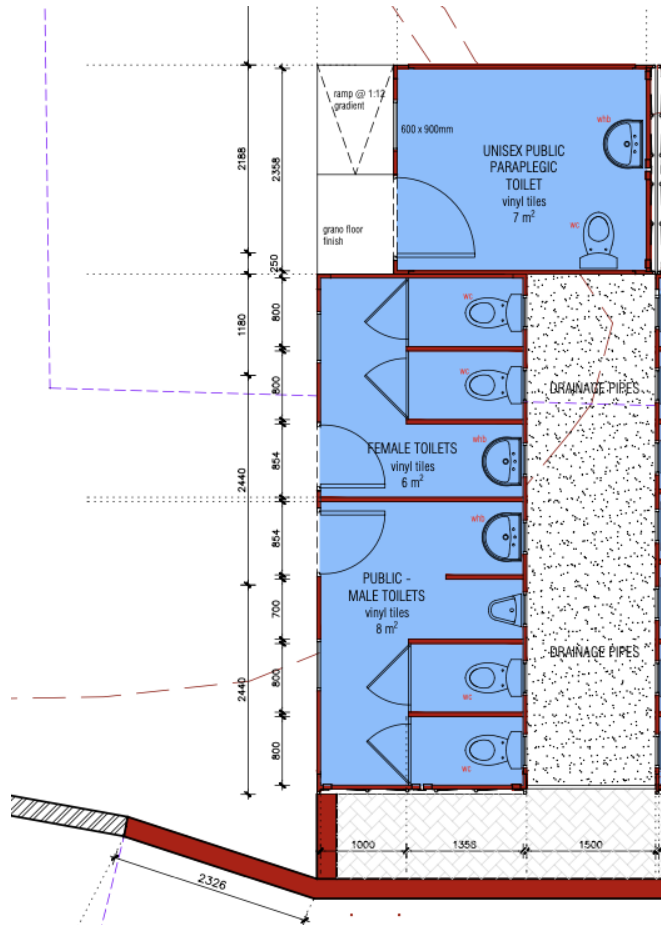
		Provide stainless steel grab rails. Provide wall tiles as per finishing schedules.
Container 5 (6m x 2,4m)	Male Staff Toilets. 8 m ²	2 x wc, 1 x urinal & 1 x whb. Provide taps, electric hand drying unit, mirror (tile-in), 2 x toilet roll holders, soap dispenser, bin & floor drain. Provide wall tiles as per finishing schedules.
	Female Staff Toilets. 6 m ²	2 x wc & 1 x whb. Provide taps, electric hand drying unit, mirror (tile-in), 2 x sanitary bins, 2 x toilet roll holders, soap dispenser, bin & floor drain. Provide wall tiles as per finishing schedules.



prasa cres

CORPORATE REAL ESTATE SOLUTIONS

GROUND FLOOR: PUBLIC ABLUTIONS.



BUILDING / FACILITY

FUNCTIONALITY SCOPE / DETAILS

TOTAL 2 CONTAINERS COMBINED

Container 6 (3m x 2,4m) – Public Unisex Paraplegic Toilet.

Container 7 (6m x 2,4m) – Public Female Toilets & Public Male Toilets.

Combined containers fixed to foundation to Engineer's specifications and details.
Containers to be braced and supported on steel columns and beams to Engineer's specifications and details.

Provide insulation in External wall panels.

Interior Walls: 90mm dry wall.

Provide ceiling.

Provide floor vinyl tiles with timber skirting. Skirting to be taken 200mm up wall.

2 x 600 (w) x 900 (h) natural anodized aluminum window, fitted with burglar proof bars (Container 6 & 7).

7 x 400 (w) x 600 (h) natural anodized aluminum window, fitted with burglar proof bars (Container 7).

2 x standard external door, fitted with security gates.

1 x paraplegic toilet door, fitted with a security gate.; 4 x toilet cubicle doors.

Mentis or similar Grating Recta Grid screen with access gate to drainage pipes areas.

Allow for universal access (ramps, etc.) into paraplegic toilet.

Paint all containers exterior & internal walls, as per PRASA recommended colours.

Waterproofing to any exposed Shipping Container top / roof, as per Engineer's or specialist specification.

Provide signage, vandal, and water-resistant exterior and interior light fittings.

Provide drainage to all new sanitary ware.

Provide cold water to all new sanitary ware.

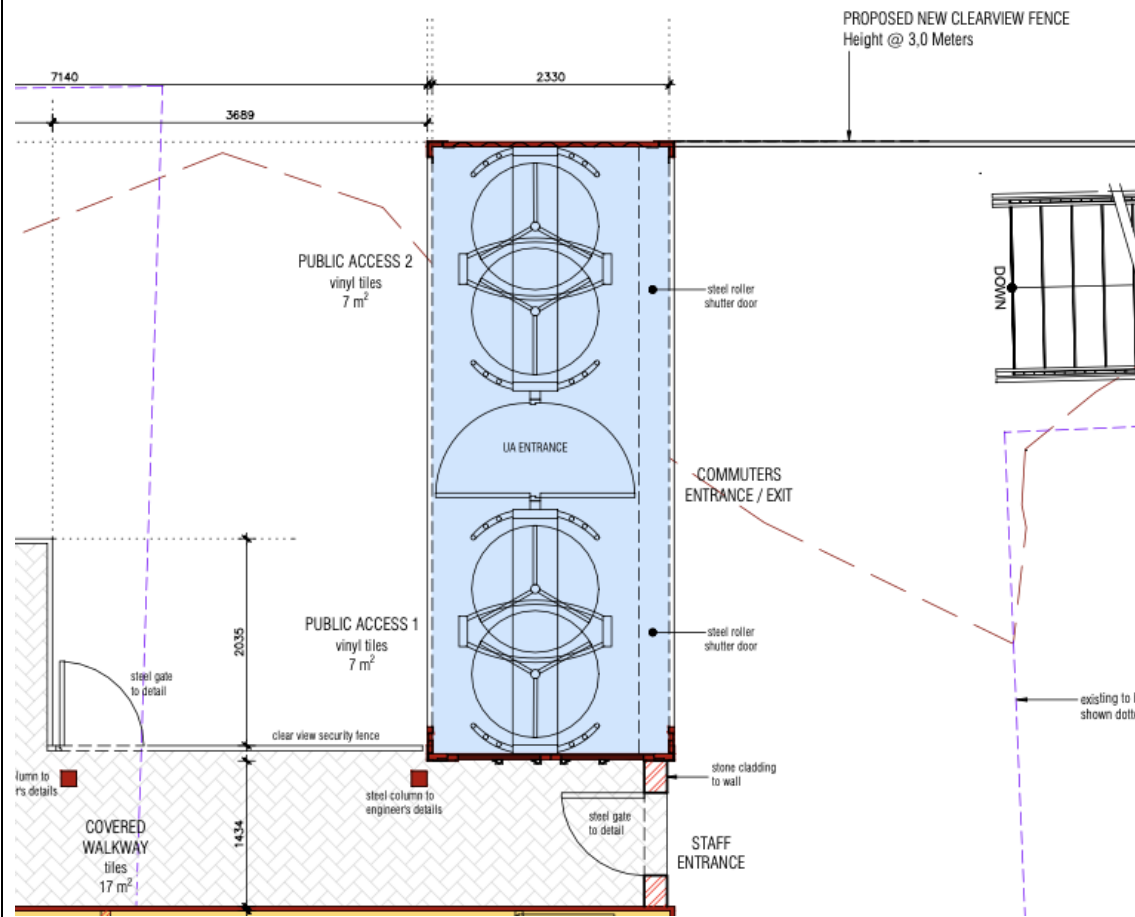
electric hand drying unit isolator

Container 6 (3m x 2,4m)	Unisex Paraplegic Toilet. 7 m ²	1 x wc & 1 x whb. Provide a lever tap (cold water only), electric hand drying unit, mirrors (tile-in), toilet roll holder, soap dispenser, bin & floor drain. Provide stainless steel grab rails. Provide wall tiles as per finishing schedules.
Container 7 (6m x 2,4m)	Male Staff Toilets. 8 m ²	2 x wc, 1 x urinal & 1 x whb. Provide taps, electric hand drying unit, mirror (tile-in), 2 x toilet roll holders, soap dispenser, bin & floor drain. Provide wall tiles as per finishing schedules.
	Female Staff Toilets. 6 m ²	2 x wc & 1 x whb. Provide taps, electric hand drying unit, mirror (tile-in), 2 x sanitary bins, 2 x toilet roll holders, soap dispenser, bin & floor drain. Provide wall tiles as per finishing schedules.



BUILDING / FACILITY	FUNCTIONALITY SCOPE / DETAILS
<p>TOTAL 1 CONTAINER: IN A VERTICAL POSITION</p> <p>Container 8 (6m x 2,4m) – Stairs.</p>	<p>Container to be placed vertically, braced and supported on steel columns and beams to Engineer's specification and details.</p> <p>1 x 1600 (w) x 600 (h) container opening / 'window' covered with Mentis or similar Grating Recta Grid screen.</p> <p>Provide floor vinyl tiles with timber skirting.</p> <p>Stairs to continue to top of container, to be used as a security viewing deck.</p> <p>Security viewing deck: provide non-slip terrazzo tile with waterproofing under. 1m high standard galvanized handrail stanchions (balustrades).</p> <p>Paint all containers exterior & internal walls, as per PRASA recommended colours.</p> <p>Waterproofing to any exposed Shipping Container top / roof, as per Engineer's or specialist specification.</p> <p>Provide signage, exterior and interior light fittings.</p> <p>Provide SSO</p> <p>Provide associated fire equipment signage.</p> <p>Galvanized steel fabricated stairs to detail by specialist. 1m high standard galvanized handrail stanchions (balustrade).</p>

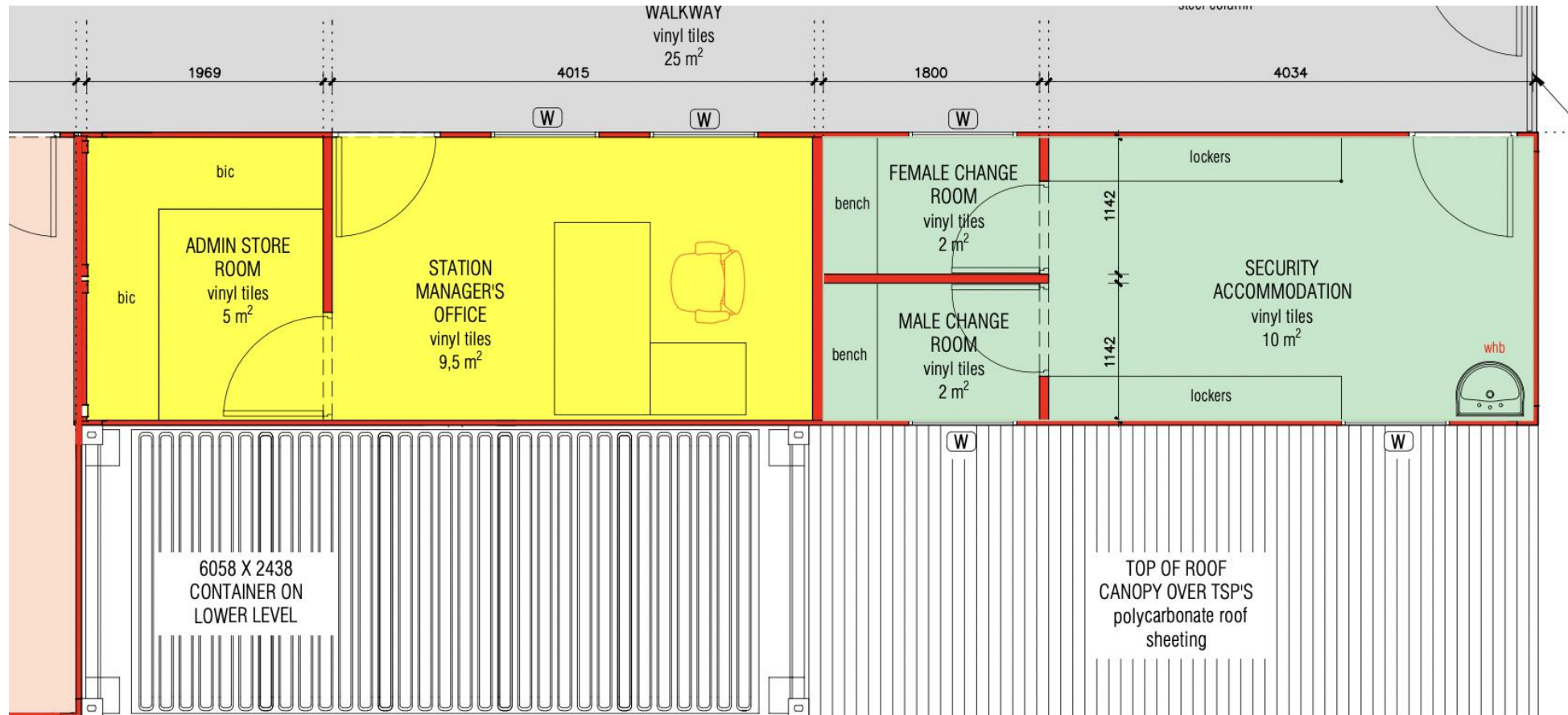
GROUND FLOOR: TICKET VERIFICATION POINTS (TVP'S).



BUILDING / FACILITY	FUNCTIONALITY SCOPE / DETAILS
<p>TOTAL 4 CONTAINERS.</p> <p>Container 9 & 10 (3m x 2,4m) – TVP 1 (Platform 1). Two combined containers fixed to foundation to Engineer's specifications and details.</p> <p>Container 11 & 12 (3m x 2,4m) – TVP 2 (Platform 2). Two combined containers fixed to foundation to Engineer's specifications and details.</p>	<p>Each TVP to have two combined containers fixed to foundation to Engineer's specifications and details.</p> <p>Additional container doors added to container, to act as security gates.</p> <p>Paint all container exterior panels / walls, as per PRASA recommended colours.</p> <p>Waterproofing to Shipping Container top / roof, as per Engineer's or specialist specification.</p> <p>TVP Signage and exterior light fittings.</p> <p>Allow universal access (ramps, etc.)</p> <p>Floor vinyl tiles and timber skirting.</p> <p>Access controlled Turnstile & Steel Gate, as per drawings.</p> <p>Paint all container interior panels / walls, as per PRASA recommended colours.</p> <p>Floor mounted swing bins to PRASA specifications.</p> <p>vandal and water-resistant light fittings and light switches.</p> <p>4.5 kg DCP Fire Extinguisher to be installed</p> <p>Associated fire equipment signage</p> <p>CCTV</p>



FIRST FLOOR: ADMINISTRATION AND SECURITY. INCLUDING SIGNAGE CONTAINER ATTACHED.



BUILDING / FACILITY

FUNCTIONALITY SCOPE / DETAILS

TOTAL 2 CONTAINERS COMBINED (1 IN VERTICAL POSITION).

Container 13 (12m x 2,4m) – Admin Storeroom, Station Manager’s Office & Security Accommodation.

Container 14 (6m x 2,4m) – Station Signage on Container in a vertical position.

Vinyl tiles floor finish on 40mm screed on Conc. slab to Engineer’s specifications and details, all to SABS.

Containers to be braced and supported on steel columns and beams to Engineer’s specifications and details.

Provide insulation in External wall panels.

Walls in Station Manager’s Office and Admin Storeroom to have mild steel security sheet embedded in panel. Mild steel security lining to be full height.

Provide ceiling.

Interior Walls: 90mm Dry wall with Flexible Mineral Insulation.

Provide floor vinyl tiles with timber skirting.

5 x 1200 (w) x 900 (h) natural anodized aluminum window, fitted with burglar proof bars.

2 x standard external doors, fitted with security gates.

3 x standard internal doors.

Paint all container exterior & internal walls, as per PRASA recommended colours.

Waterproofing to any exposed Shipping Container top / roof, as per Engineer’s or specialist specification.

Provide signage, exterior and interior light fittings. Provide plugs and light switches.

Provide drainage to all new sanitary ware

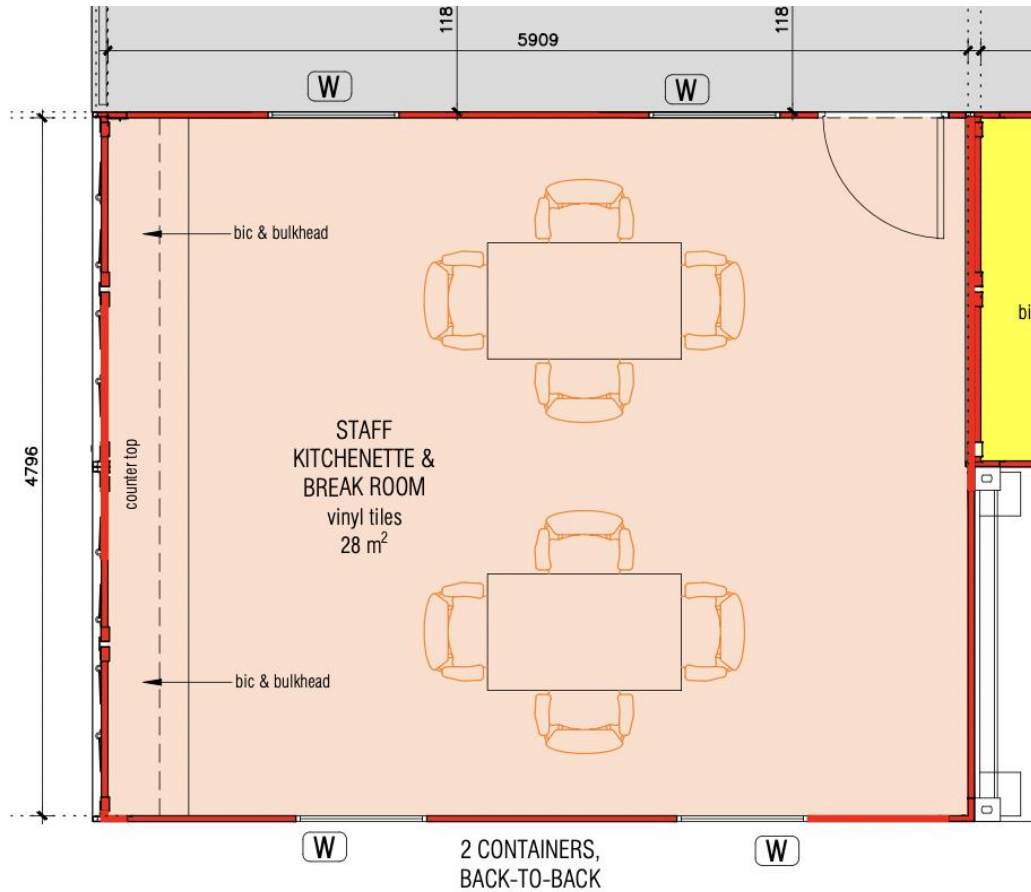
Provide cold water to all new sanitary ware

Fire Hose reel to be installed.

	<p>4.5 kg DCP Fire Extinguisher to be installed.</p> <p>Associated fire equipment signage.</p> <p>Install Inverter Split unit for Air Conditioning for Offices.</p> <p>install 32A isolator for each air conditioning unit</p>	
Container 13 (12m x 2,4m)	Admin Storeroom. 5 m ²	Provide 500mm wide shelves. Storeroom to be fire protected room to preserve documents in case of fire.
	Station Manager's Office. 9,5 m ²	Provide air-conditioning. Provide audio communications facilities for public announcements.
	Security Accommodation. Female Change Room (2 m ²) Male Change Room (2 m ²) Locker Room (10 m ²) Total = 14 m ²	Provide benches in male & female change rooms. Provide built-in Lockers. Min. sizes: 300mm (w) x 450mm (d) x 900mm (h). Provide 1 x whb with taps and mirror.
Container 14 (3m x 2,4m)	<p>Container to be placed vertically, braced and supported on steel columns and beams to Engineer's specification and details.</p> <p>Provide main station signage, exterior and interior light fittings.</p>	



FIRST FLOOR: STAFF KITCHENETTE AND BREAK ROOM.



BUILDING / FACILITY

FUNCTIONALITY SCOPE / DETAILS

TOTAL 2 CONTAINERS COMBINED.

Container 15 & 16 (2 x 6m x 2,4m) – Staff Kitchenette & Break Room.

Two combined containers to Engineer's specifications and details.

Vinyl tiles floor finish on 40mm screed on Conc. slab to Engineer's specifications and details, all to SABS.

Combined containers to be braced and supported on steel columns and beams to Engineer's specifications and details.

Provide insulation in External wall panels.

Provide ceiling.

Provide floor vinyl tiles with timber skirting. Skirting to be taken 200mm up wall.

4 x 1200 (w) x 900 (h) natural anodized aluminum window, fitted with burglar proof bars.

1 x standard external doors fitted with a security gate.

Paint all container exterior & internal walls, as per PRASA recommended colours.

Waterproofing to any exposed Shipping Container top / roof, as per Engineer's or specialist specification.

Provide signage, exterior and interior light fittings. Provide 3 x above counter plugs, and light switches.

Provide Rustenburg granite kitchen counter top, stainless steel double bowl sink with tap and Built-in Cupboards below & above counter, and splash-backs to generic details. Min 1 x set of kitchen drawers.

Space & power for std fridge. Plug for kettle & other appliances.

Provide 1 x whb and taps.

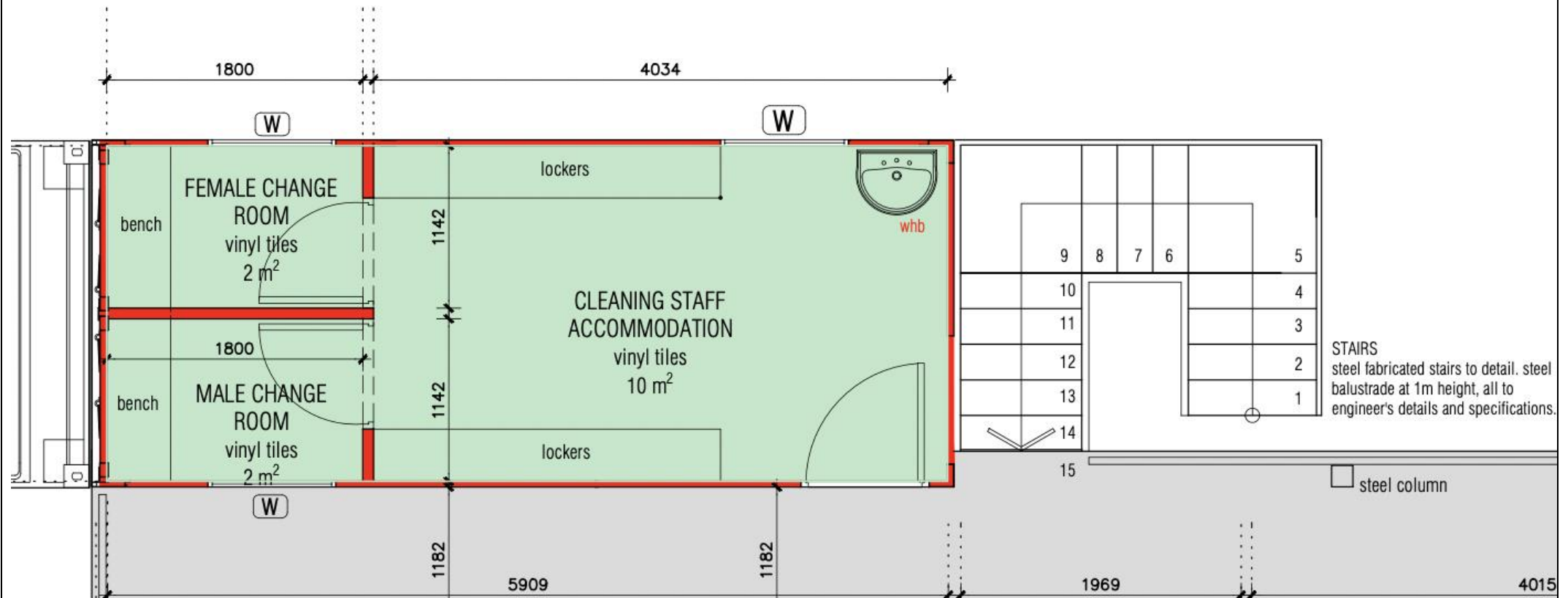
Provide drainage to all new sanitary ware



	<p>Provide cold water to all new sanitary ware</p> <p>Install hydroboil in the staff kitchenette.</p> <p>4.5 kg DCP Fire Extinguisher to be installed.</p> <p>Associated fire equipment signage.</p> <p>Install Inverter Split unit for Air Conditioning.</p> <p>install 32A isolator for each air conditioning unit</p>
--	--



FIRST FLOOR: CLEANING STAFF ACCOMMODATION.



BUILDING / FACILITY

FUNCTIONALITY SCOPE / DETAILS

TOTAL 1 CONTAINER.

Container 17 (6m x 2,4m) – Cleaning Staff Accommodation.

Female Change Room (2 m²)

Male Change Room (2 m²)

Locker Room (10 m²)

Total = 14 m²

Vinyl tiles floor finish on 40mm screed on Conc. slab to Engineer's specifications and details, all to SABS.

Container to be braced and supported on steel columns and beams to Engineer's specifications and details.

Provide insulation in External wall panels.

Provide ceiling.

Provide floor vinyl tiles with timber skirting. Skirting to be taken 200mm up wall.

3 x 1200 (w) x 900 (h) natural anodized aluminum window, fitted with burglar proof bars.

1 x standard external doors fitted with a security gate.

2 x standard internal doors.

Paint all container exterior & internal walls, as per PRASA recommended colours.

Waterproofing to any exposed Shipping Container top / roof, as per Engineer's or specialist specification.

Provide signage, exterior and interior light fittings. Provide 3 x above counter plugs, and light switches.

Provide benches in male & female change rooms.

Provide built-in Lockers. Min. sizes: 300mm (w) x 450mm (d) x 900mm (h).

Provide 1 x whb and taps.

Provide drainage to all new sanitary ware

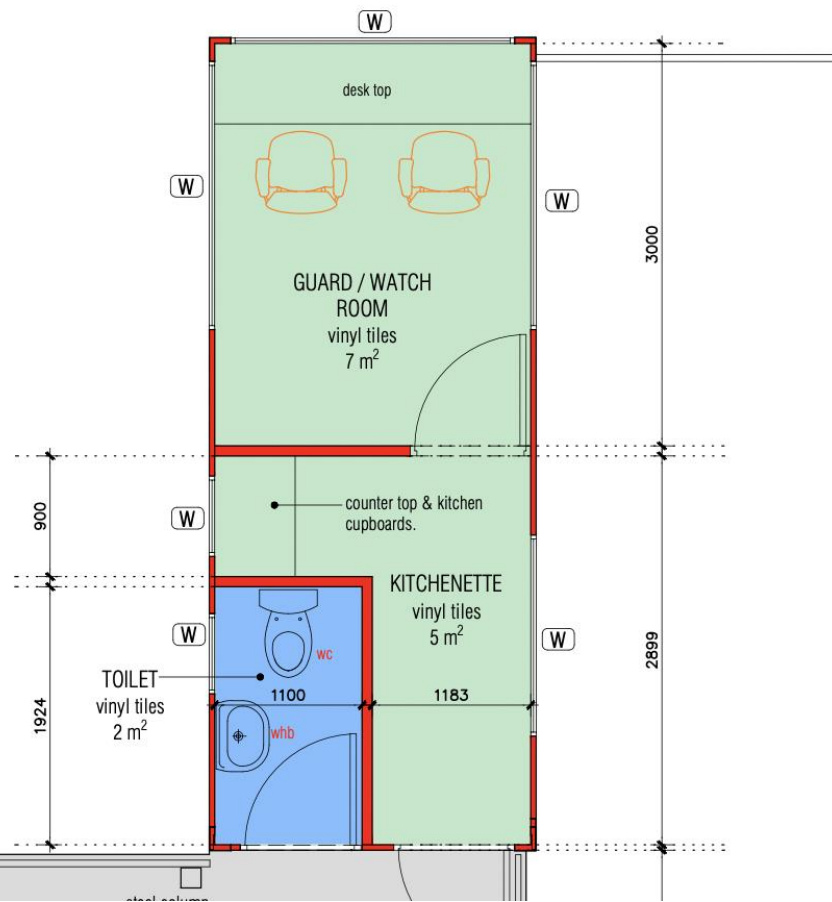
Provide cold water to all new sanitary ware



	<p>Install hydroboil in the staff kitchenette.</p> <p>4.5 kg DCP Fire Extinguisher to be installed.</p> <p>Associated fire equipment signage.</p> <p>Install Inverter Split unit for Air Conditioning.</p> <p>install 32A isolator for each air conditioning unit and 30A isolator for hydroboil</p>
--	--



FIRST FLOOR: SECURITY ROOM.

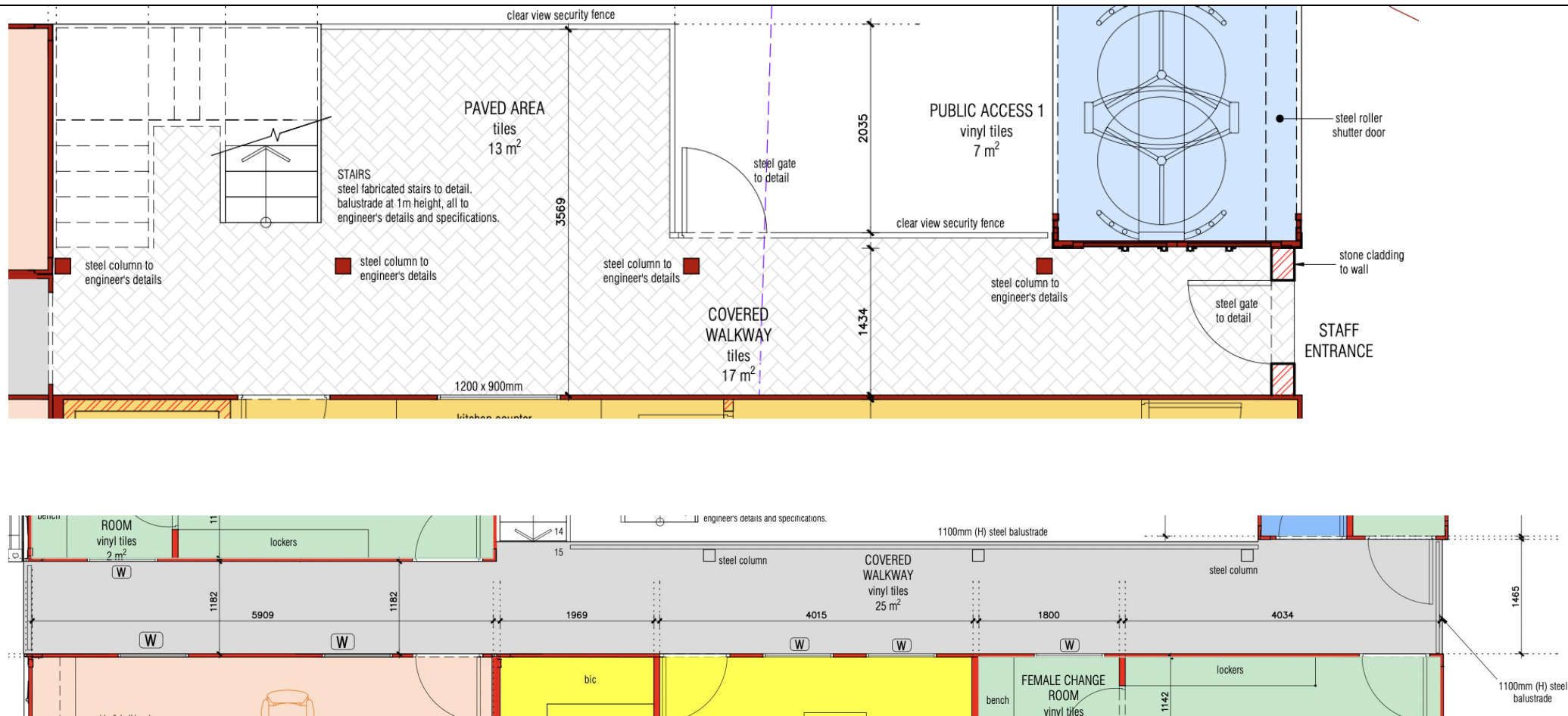


BUILDING / FACILITY	FUNCTIONALITY SCOPE / DETAILS
<p>TOTAL 1 CONTAINER.</p> <p>Container 18 (6m x 2,4m) – Guard Room, Kitchenette & Unisex Toilet.</p>	<p>Vinyl tiles floor finish on 40mm screed on Conc. slab to Engineer's specifications and details, all to SABS.</p> <p>Containers to be braced and supported on steel columns and beams to Engineer's specifications and details.</p> <p>Provide insulation in External wall panels.</p> <p>Walls to have mild steel security sheet embedded in panel. Mild steel security lining to be full height.</p> <p>Provide ceiling.</p> <p>Interior Walls: 90mm Dry wall with Flexible Mineral Insulation.</p> <p>Provide floor vinyl tiles with timber skirting. Skirting to be taken 200mm up wall.</p> <p>3 x 1600 (w) x 900 (h) natural anodized aluminum window, fitted with burglar proof bars.</p> <p>2 x 600 (w) x 900 (h) natural anodized aluminum window, fitted with burglar proof bars.</p> <p>1 x 1200 (w) x 900 (h) natural anodized aluminum window, fitted with burglar proof bars.</p> <p>2 x standard external doors, 1 x door fitted with security gates.</p> <p>1 x standard internal doors.</p> <p>Paint all container exterior & internal walls, as per PRASA recommended colours.</p> <p>Waterproofing to any exposed Shipping Container top / roof, as per Engineer's or specialist specification.</p>



	<p>Provide signage, exterior and interior light fittings. Provide plugs and light switches.</p> <p>Provide drainage to all new sanitary ware</p> <p>Provide cold water to all new sanitary ware</p> <p>Install CCTV for security</p>	
Container 18 (6m x 2,4m)	Guard Room. 7 m ²	Provide Formica countertop and under counter built-in cupboards / drawers.
	Kitchenette. 5 m ²	Provide Formica countertop and under counter built-in cupboards / drawers Provide 1 x sink.
	Unisex Toilet. 2 m ²	Provide 1 x wc and 1 x whb Provide taps, mirror (tile-in), toilet roll holder, soap dispenser, bin & floor drain. Provide wall tiles as per finishing schedules.

GROUND & FIRST FLOOR: COCERED WALKWAYS.





BUILDING / FACILITY	FUNCTIONALITY SCOPE / DETAILS
GROUND FLOOR AND FIRST FLOOR COVERED WALKWAYS.	<p>Provide non-slip Terrazo tiles, with waterproof under, on screed 40mm to fall on Concrete slab to Engineer's details and specifications, all to SABS.</p> <p>Provide signage and vandal and water resistant exterior light fittings.</p> <p>Provide mild steel balustrades to first floor covered walkways.</p>



A DIVISION OF **prasa**



ITEM	Detailed specification
A1. 4. STRONGROOM/ DROP SAFE	Redesign internal space to cater for a 2m x 2m strong room. Strong room to have concrete slab over Strong Room to receive class 2 Security door. Cash drop-safe to cater for 3 safes standard size
A1. 5. EXTERIOR WALLS	50mm Polystyrene insulation in External panels embedded in panel and sandwiched between 0,58mm pre-painted White Chromadek sheets.
A1. 6. SECURE EXTERIOR WALLS	50mm Polystyrene insulation in External panels with mild steel security sheet embedded in panel and sandwiched between 0,58mm pre-painted White Chromadek sheets. Mild steel security lining to be full height.
A1. 7. INTERIOR WALLS & WINDOW BLINDS	90mm Dry wall with Flexible Mineral Insulation. All windows excluding toilets shall be fitted with window vertical window blinds.
A1. 8. FLOORING: GROUND FLOOR	Vinyl tiles floor finish on container base. Container fixed to Conc. Floor slab to Engineer's specifications and details, all to SABS.
A1. 9. FLOORING: FIRST FLOOR	Vinyl tiles floor finish on 40mm screed on Conc. slab to Engineer's specifications and details, all to SABS.
A1. 10. CEILING	70mm Polystyrene panels sandwiched between 0,58mm pre-painted White Chromadek sheets.
A1. 11. SECURITY FENCE	High-security anti-climb wire mesh fencing panels: aperture size 76mm x 12.7mm, panel width 3m, panel height 2m, wire size 3mm x 4mm, finishing – plain galvanization.



ITEM	Detailed specification
A1. 12. MENTIS GATE	Galvanized mentis steel grating formed of 50 x 50mm square tubes welded together. Painted with plascon ivory parchment enamel code: Y3-D3-2. Galvanised gate frame 50 x 50mm square tubes welded together. 60 x 50 x 4mm galvanised steel gate stopper. Gate to have 2 openings to access sliding bolt.
A1. 13. BALUSTRADES	76mm diameter stainless steel balusters fixed to outside of stairs / walkways with a 76mm diameter stainless steel top rail, and 25 x 25mm mild steel angle frame with mesh panels fixed to the outside.
A1. 14. ROOF CANOPY (ABOVE TICKET SALES POINTS)	Chromadek "IBR" roof sheeting with extruded Chromadek roof edging by roof specialist, colour to match roof sheeting on steel support structure to engineer's details. Chromadek gutter & downpipe with magna board facias. Roof to be fitted with vandal & water resistant single tube fluorescent lighting per PRASA spec, installed end to end for continuous light strip.
A1. 15. TICKET SALES CUBICLES	Glass partitions on 90mm drywall to ceiling. 32mm Rustenburg granite counter top. 255 x 285 x 30mm deep cash transfer tray, cut out 230 x 260mm. Power skirting below and above counter. Lockable cupboard with shelves below and lockable stationery drawer below. Pull out cash drawers.
A1. 16. QUEUING HANDRAILS	76mm diameter stainless steel top horizontal rail above with top of rail at 1000mm AFFL. 76mm diameter stainless steel vertical at 1800mm centres welded to stainless steel base plate. 200 x 200 x 10mm stainless steel base plate bolted or epoxied to concrete slab. Top of base plate to be flush with top of floor tile.
A1. 17. CHANGE ROOM BENCHES	69 x 32mm meranti slats with pencil rounded top edges, with clear coat varnish / sealant. With a 69 x 22mm meranti fascia with clear coat varnish / sealant fixed to GMS framing behind. Fixed to 75 x 50mm galvanised mild steel strut welded to 75 x 50mm seat framing & bolted to wall 2no. M10 anchors to structure, all to engineer's details.
A1. 18. CHANGE ROOM BENCHES	Wall bands fixed directly to walls, 600mm wide powder coated steel shelf on steel shelf brackets at 750mm maximum spacing.
A1. 19. CUPBOARD NOTES	Worktops: 30mm "Rustenburg" polished granite worktops with 5mm double bevelled edges. Pull handles: pull handles to finishes schedule.



ITEM	Detailed specification
	<p>Cupboard doors: "American walnut" melawood impact doors with post formed wrapped doors.</p> <p>Structure: White melamine carcass base and shelves with Masonite backing and black painted chipboard kickplates and mild steel post supports.</p> <p>Sink: 1000 x 457mm stainless steel drop sink.</p>
A1. 20. ACCESSORIES	Provide 3x cash drawers and 1 No. money counting machines
A1. 21. ELECTRICAL INCLUDING LUMINARIES	<p>Luminaries and installation to comply with SANS 1464 Parts 1 to 22 and IEC 598-1 and IEC 60598 as applicable. The contractor shall, in the case of board and acoustic tile ceilings ensure that the luminaries are symmetrically positioned with regard to the ceiling pattern. The layout of the luminaries as indicated on the drawings shall be adhered to as far as possible. The exact positions must be confirmed on site with the Employer.</p> <p>Fluorescent luminaries to be mounted on concrete ceilings shall be screwed to the outlet boxes and additionally supported by means of 50mm x 6mm expansion bolts. The bolts are to be $\frac{3}{4}$ of the length of luminaries apart.</p> <p>Where several luminaries are installed end to end, outlet points must be provided after every second luminaire unless otherwise indicated on the drawing. The luminaries are to be joined together by means of 20mm conduit nipples, lock nuts and male brass bushes, and the wiring led through the channels of the luminaries. The Contractor shall ensure that all such rows are correctly lined up and that the rows are parallel with the relevant building line. The luminaries are to be joined together by means of 20mm or 25mm conduit nipples, lock nuts and male brass bushes, and the wiring led through the channels of the luminaries. The Contractor shall ensure that all such rows are correctly lined up and that the rows are parallel with the relevant building line. Incandescent luminaries are to be screwed directly to outlet boxes in concrete slabs and in board ceilings. In board ceilings the conduit box and the conduit shall be secured to the timberwork of the ceiling in such a manner that it shall support any incandescent luminaire, which is designed to be</p>



ITEM	Detailed specification
	fixed to a normal conduit box. Fluorescent luminaries shall be secured to board ceilings by means of the conduit box and 6mm bolts passing through the boards and brandering.
A1. 22. CERTIFICATION	All alterations and structural elements of the container shall be certified by a registered competent Engineer. A certificate of Compliance (COC) shall be issued for all electrical installations and lightning protection.
A1. 23. ELECTRICAL DISTRIBUTION BOARD (DB) (SURFACE MOUNTING DISTRIBUTION BOARDS)	<p>Single Phase boards shall be generally constructed as three phase boards except they shall have a single panel. Single phase boards shall be mounted with the bottom of the architrave 1,5m above finished floor level unless specifically directed otherwise.</p> <p>These shall be generally manufactured in accordance with SANS 1765, with two panels as for flush boards.</p>
A1. 24. POSITIONS OF SWITCHES AND SOCKET OUTLETS	Except where otherwise specified, lighting switches Installed at 1,4m and socket outlets are to be installed 300mm and 1,4m at the kitchen above finished floor level. All mounting heights specified are to be measured from finished floor level to the bottom of the outlet box. Where the lower portion of the wall consists of face brickwork and the upper portion of plastered finish, switches and socket outlets are to be mounted in the plastered surface, provided that the lower edge of the plasterwork does not exceed a height of 1,5m above finished floor level in which case the switches or socket outlets are to be installed in the face brick dado.
A1. 25. INSTALLATION OF CONDUIT	<p>Except where cables are specified for certain circuits, the installation(s) shall be tubed throughout in steel conduit. Split conduit is not permitted. All conduits shall, wherever possible, or unless otherwise specified or agreed, be concealed in the structural work.</p> <p>Except where agreed or otherwise specified or indicated on the drawings, all conduit to points shall run via the ceiling and floor slabs or roof space. In damp situations and where exposed to the weather, the conduits shall be so installed as to avoid, as far as possible, the condensation of moisture within them. All running joints are to be painted with an approved metal primer.</p>



ITEM	Detailed specification
	Mechanical and Electrical continuity must be maintained throughout the installation. Each length of conduit and every conduit fitting must be inspected for defects and all sharp edges or burrs must be removed before it is installed. All joints are to be tightly fitted together. Running joints with long threads, where used, are to be fitted with a lock nut and the running thread shall not be longer in length than a coupling and lock unit.
A1. 26. MECHANICAL – HIGHWALL SPLIT AIR CONDITIONING UNITS	2.5kW Cooling Capacity and 2.8kW Heating Capacity Highwall inverter type split unit, unit shall come complete with Wallmounted control (Wired Type). 3.5kW Cooling Capacity and 4kW Heating Capacity Highwall inverter type split unit, unit shall come complete with Wallmounted control (Wired Type).
A1. 27. MECHANICAL – FIRE PROTECTION EQUIPMENT	4.5kg of Dry Chemical Powder (DCP) fire extinguishers c/w red fire extinguisher cabinet cover. 5.0kg of Carbon Dioxide (CO2) fire extinguishers complete with mounting wooden plate