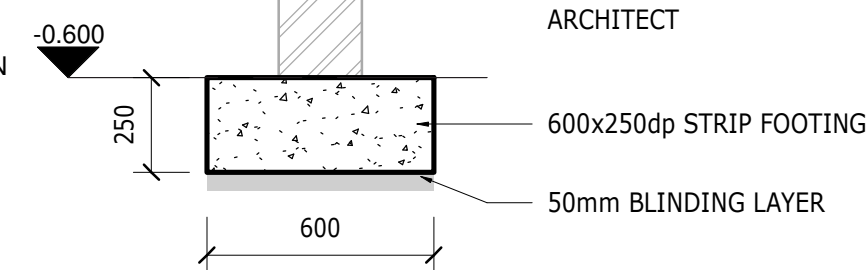


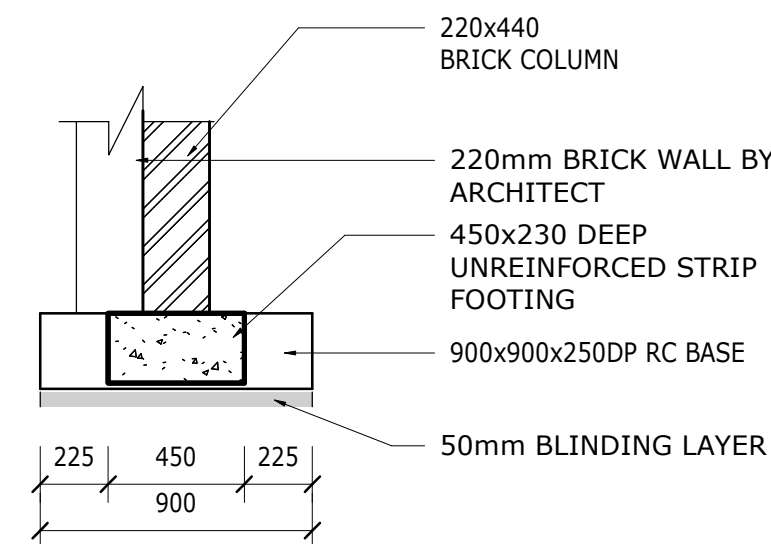
FOUNDATION LAYOUT
SCALE 1 : 100

FOUNDATION

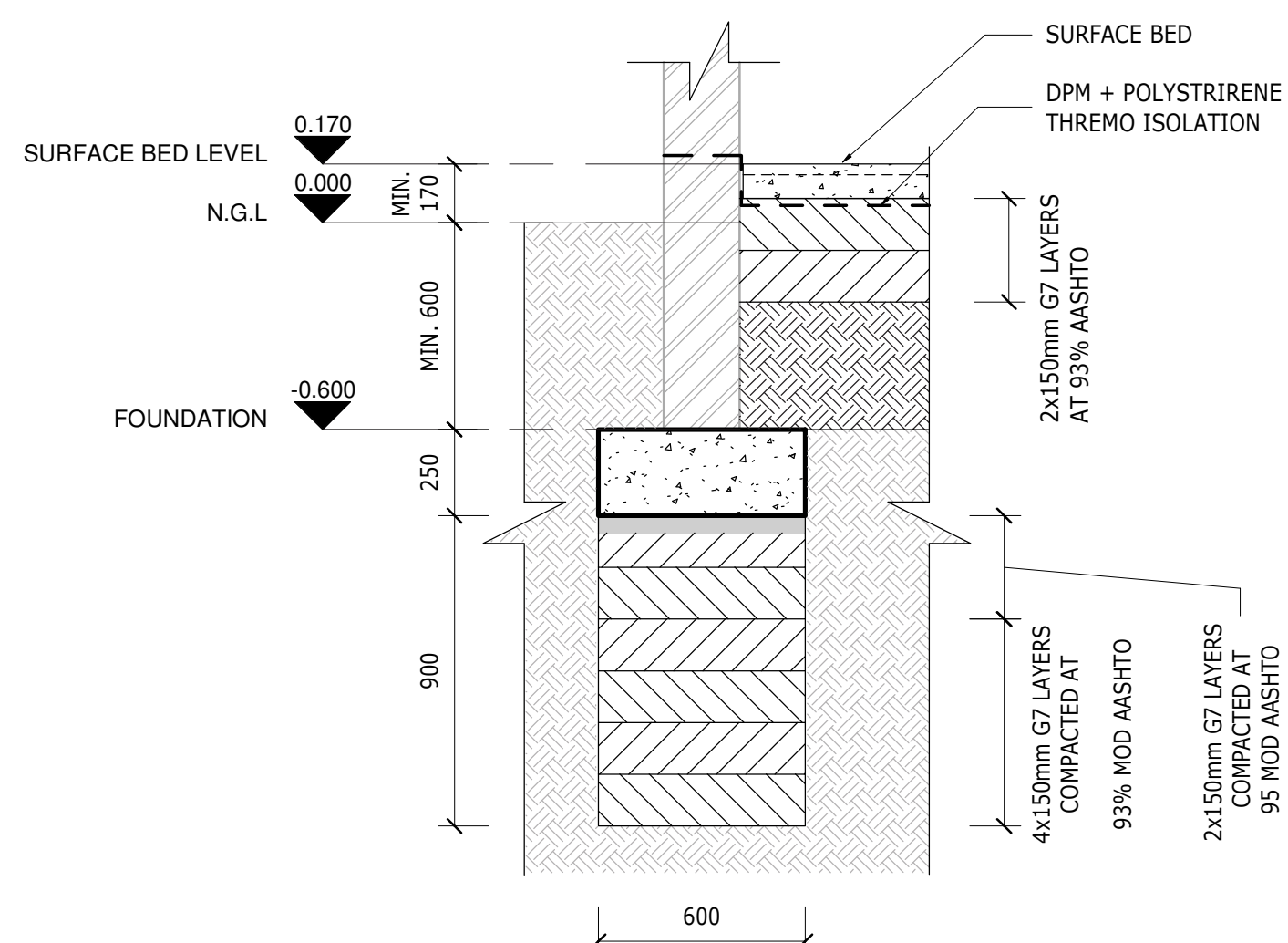


TYPICAL STRIP FOOTING

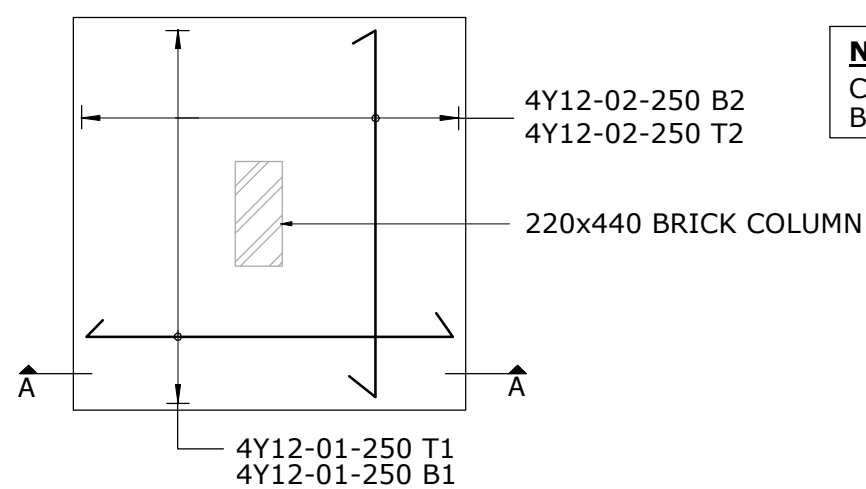
SECTION A-A
SCALE 1 : 20



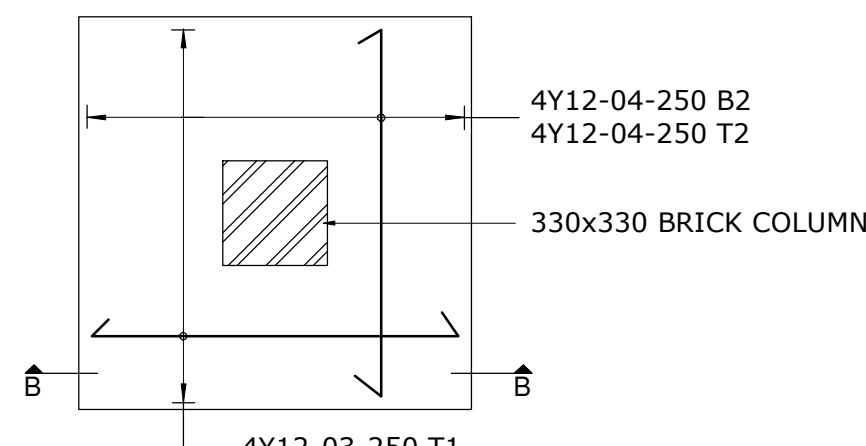
SECTION C-C
SCALE 1 : 25



TYPICAL LAYER WORKS DETAIL
SCALE 1 : 20

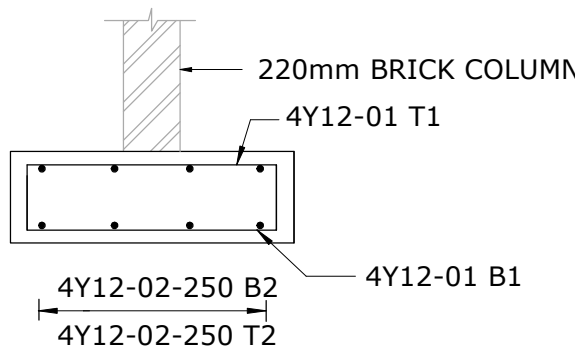


900x900x250dp RC BASE
12No. OFF

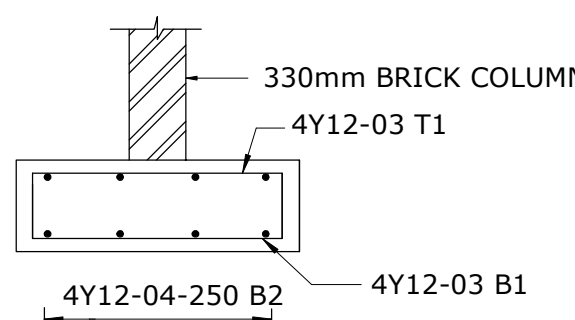


850x850x250dp RC BASE
7No. OFF

NOTE:
COVER TO BE:
BASE= 50mm



SECTION A-A



SECTION B-B

NOTES:

- ALL DRAWINGS TO BE READ IN CONJUNCTION WITH THE ARCHITECT DRAWINGS
- ALL FOUNDATION EXCAVATION TO BE INSPECTED AND APPROVED BY ENGINEER BEFORE FIXING STEEL REINFORCEMENT OR CASTING CONCRETE. WHERE SUITABLE FOUNDING MATERIAL IS NOT ENCOUNTERED AT THE DEPTH SHOWN ON THE FOUNDATION DRAWINGS, EXCAVATION IS TO PROCEED TO A DEPTH AS APPROVED BY THE ENGINEER ON SITE.
- STRIP OR PAD FOOTING TO BE CAST AT A DEPTH MINIMUM 600mm DEEP. BELOW THIS LEVEL, CONSTRUCT A SOIL RAFT COMPACTED IN 6X150 LAYERS OF G7 AT 93% MOD AASHTO AT OMC.
- BELOW SURFACE BED: INSITU SOIL TO RIP AND COMPACT, THEN 2 LAYERS IN 150mm MAXIMUM COMPACTED TO 93% MODIFIED AASHTO DENSITY AT OMC.
- CONCRETE MIXES:

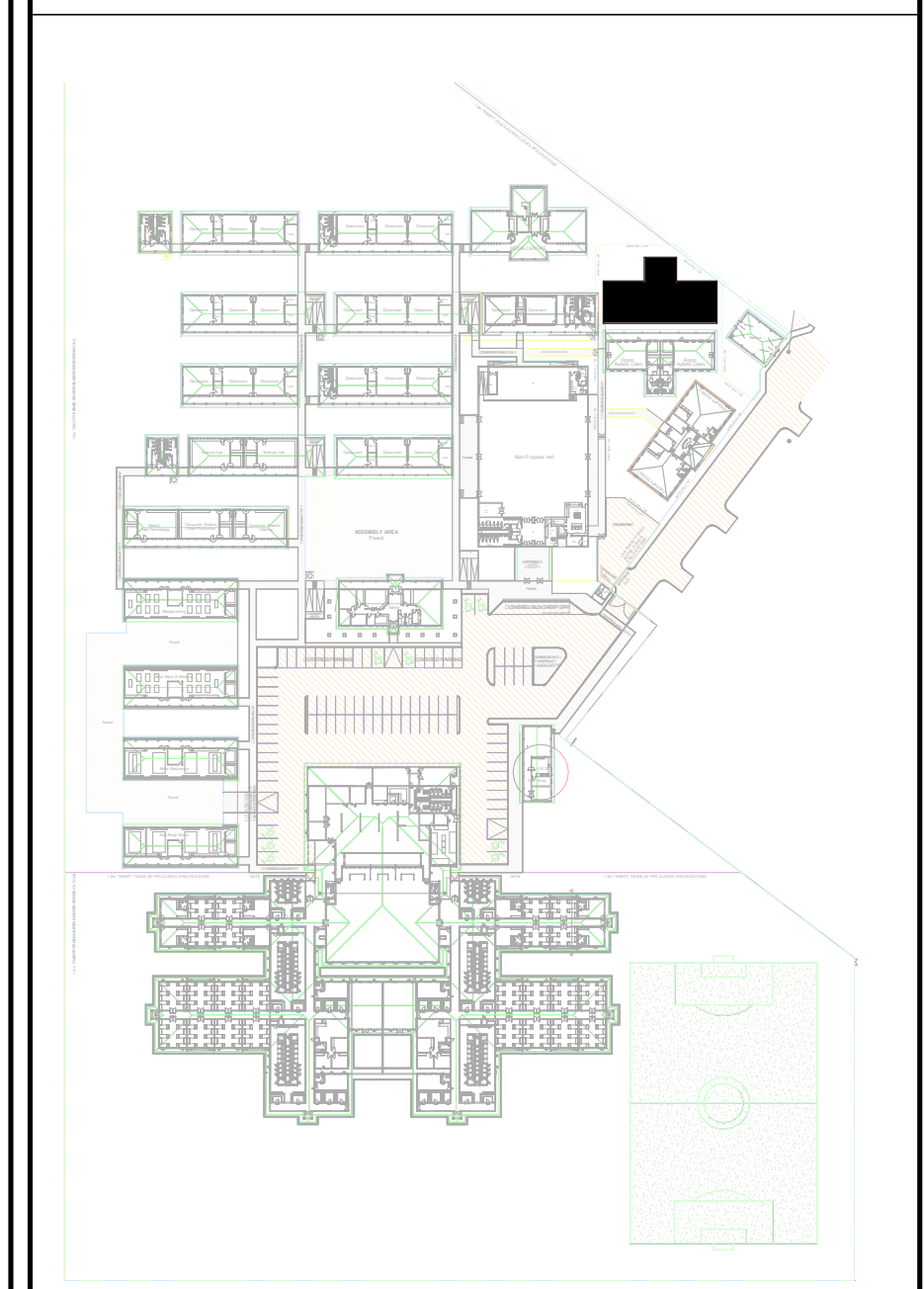
BLINDING	15/19
FOUNDATIONS	20/19
RC PAD FOOTING, SURFACE BED	25/19
BEAMS AND COLUMNS	30/19
- BEARING PRESSURE ON SOIL RAFT = 100KPa
SCHOOL FOUNDATION PRESSURE = 44.35 KN/m²
HALL FOUNDATION PRESSURE = 76.21 KN/m²
SUPERIMPOSED LOADS:
LIVE ON UNACCESSIBLE ROOF = 0.25kN/m²
WIND SPEED = 28 m/s
WIND PRESSURE = 447.29 N/m²

BRICK COLUMN	330x330
COLUMN BASE	850x850x250
STRIP FOOTING	600x250
STRIP FOOTING (UNDER THE WALK WAY)	450x230

STRUCTURAL ELEMENTS	REINFORCEMENT IN kg/m ³
PAD FOOTING FOR COLUMNS	145 kg/m ³
RC COLUMNS	150 kg/m ³
SURFACE BED	30 kg/m ³

REV	DATE	DESCRIPTION	ISSUED BY	APPR BY
0	21.10.13	ISSUED FOR TENDER	MNP	ET

KEYPLAN:



CLIENT



CONSULTANT



Gauteng Office (Head Office)
GladAfrica House, Hertford Office Park
90 Bekker Road, Vorna Valley, Midrand, 1686
P.O Box 6723 Halfway House 1685
Tel. +27 11 312 2537/2584
Fax +27 11 805 1905
www.gladafrika.com

	NAME	REG. NO.	SIGNATURE
DRAWN	MN PHAHLAMOLAKA	N/A	N/A
DESIGNED	E. TLOMATSANA	2017305033	

PROJECT DESCRIPTION
TROMSBURG SPECIAL NEEDS SCHOOL

DRAWING TITLE
MEDIA CENTRE
FOUNDATION LAYOUT AND SECTIONS

STATUS LEGEND		SHEET SIZE	
I	= INFORMATION	A1	
CV	= CONCEPT AND VIABILITY	SCALE	
D	= DESIGN DEVELOPMENT	AS SHOWN	
T	= TENDER		
C	= CONSTRUCTION		
AB	= AS BUILT		
DISCIPLINE	PROJECT NUMBER	STATUS	REVISION
STRUCTURAL	CE00092-ST-MC-100	T	0

FOR TENDER

				Project Name				TROMPSBURG SCHOOL				Ref. Dwg. No.				CE00092-ST-MC-100			
				Project Number				CE00092				Schedule No.				01			
				Date				27.08.2021				Revision No.				0.			
				Design By				E. TLOMATSANA				Checked By				E TLOMATSANA			
STRUCTURAL MEMBER	BAR MARK	TYPE & SIZE	No. OF MEMBERS	No. IN EACH MEMBER	TOTAL NUMBERS	CUT LENGTH mm	SHAPE CODE	DIMENSIONS											
								A mm	B mm	C mm	D mm	E/R mm							
900x900x250 DP RC COLUMN BASE	01	Y12	24	4	96	1100	38	150	800	(150)									
	02	Y12	24	4	96	1040	38	130	780	(130)									
850x850x250 DP RC COLUMN BASE	03	Y12	14	4	56	1050	38	150	750	(150)									
	04	Y12	14	4	56	990	38	130	730	(130)									
STEEL TO COMPLY WITH : SANS 282-2003						STOOLS SIT ON B1 AND SUPPORT T2 LAYER													
TOTAL MASS	Y10	Y12	Y16	Y20	Y25	Y32	Y40	R8	R10	R12	R16	R20	R25	R32	R40				
		272																	
ABBREVIATIONS :																			
T top B bottom B1 1st lowest layerT1 1st top most layerT2 2nd layer down B2 2nd layer up EF each face FF far face																			
NF near face EW each way STG stagger ALT alternate ABR alternate bars reversed																			

BENDING SCHEDULE
SCALE 1 : 30