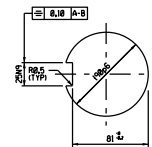
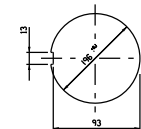


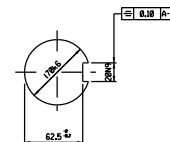
ENLARGED DETAIL 'A'



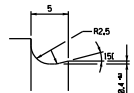
SECTION A-A



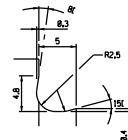
SECTION B-B



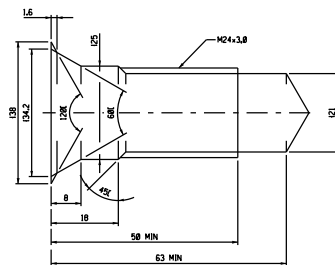
SECTION C-C



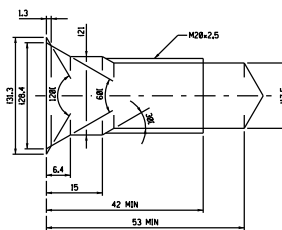
DETAIL 1  
UNDERCUT E2,5 x 0,4 DIN 589



DETAIL 2  
UNDERCUT F2,5 x 0,4 DIN 509



DETAIL 3  
CENTRE DS M24 DIN 332



DETAIL 4  
CENTRE DS M20 DIN 332

FIT	LIMITS
20N9	$\begin{smallmatrix} + \\ -0.002 \end{smallmatrix}$
25N9	$\begin{smallmatrix} + \\ -0.002 \end{smallmatrix}$
170k6	$\begin{smallmatrix} + \\ -0.002 \end{smallmatrix}$
180k6	$\begin{smallmatrix} + \\ -0.002 \end{smallmatrix}$
190p6	$\begin{smallmatrix} + \\ -0.002 \end{smallmatrix}$
1100p6	$\begin{smallmatrix} + \\ -0.002 \end{smallmatrix}$

DIMENSIONS WITHOUT TOLERANCES  
TO MEDIAN DIN 7168.

GEAR DATA  
SEE GR-800016131-609  
SUMMARY  
Z = 19  
α = 20°  
β = 10(LH  
M<sub>n</sub> = 5.5

NOTES:  
1. CASE HARDEN 58 TO 64 HRC TO A DEPTH OF 1,0 TO 1,3 WHERE SHOWN  
THUS: — — —  
2. HARDENING ALL OVER ALLOWED EXCEPT KEYWAYS AND THREADS.  
3. 1,6 (0,8/1)

THIS DRAWING HAS BEEN CREATED ON A C.A.D. SYSTEM.  
ANY AMENDMENT MUST BE EFFECTED ON THE SAME SYSTEM

[illegible]