

ITEM	:- PASSIVE BASE UNIT, ED AND PASSIVE BASE UNIT, ECU, COVER							
MATERIAL SPECIFICATION	:-							
CORROSION SPECIFICATION	:-							
STANDARD SPECIFICATION	:-							
ESKOM SPECIFICATION	:- 240-75660815, 240-75659896, D-DT-3171							
TEST & CERTIFICATION REQUIREMENTS	:-							
INSPECTION	Yes	No	ESKOM RELEASE NOTE			Yes	No	
IDENTIFICATION:- INDELIBLE MANUFACTURES TRADEMARK & PART No. ON ALL ITEMS								
15	1 x 63A DIN MOUNTED 2 POLE ISOLATOR ADDED		J.S.	J. MAUDU		24-02-2025		
14	SAP NUMBER 0662599 AND 0670652 ADDED.		J.S.	M.NGCWAMA	J. MAUDU	30.05.2023		
13	KIT:SPLIT METER READYBOARD RETROFIT ADDED		P.A.T.	J. MAUDU	J. MAUDU	01.08.2018	(D-DT-3236) METER BOX (EMPTY) AND MOUNTING	
REV	REVISION DESCRIPTION		BY	CHKD	AUTH	DATE	REF. DWGS	
AUTH:	P. CROWDY	DATE:	31.10.1996	 D-DT-3171		SAP No:		
CHKD:	P. NOWOSAD	DATE:	31.10.1996			0171705		
DRAWN:	P.A. VERMAAK	DATE:	24.5.1996			0171710		
						SET	SHEET	REV
						7	1	15

Unique Identifier:240-48887441

Revision 1

SPEC SHEET

SAP MATERIAL No.:	0171705
SHORT DESCRIPTION:	BASE:STANDARD PASSIVE UNIT ECU


TECH. DESCRIPTION:

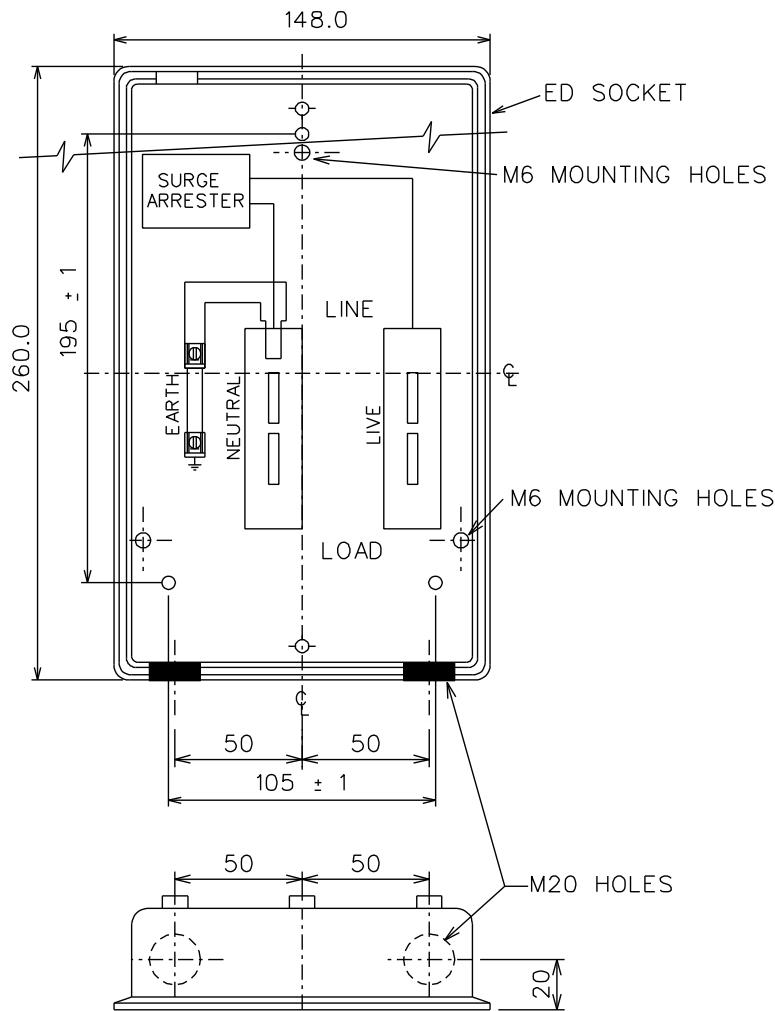
BASE: TYPE: STANDARD PASSIVE UNIT ECU; WIDTH: 148 MM; LENGTH: 260 MM; HEIGHT: 40 MM; MATERIAL: THERMO PLASTIC; SPECIFICATION: ESKOM:240-75660815; SANS1507; APPLICATION: PREPAYMENT METER; SURGE ARRESTER INSTALLED; NEUTRAL LINKED TO EARTH; STANDARD WALL BOX WITH 2 OFF SWITCHED SOCKET PASSIVE CONNECTED TO WALL OUTLET BOX WITH 2.5 MM2. 2 CORE AND EARTH, UV STABLE, ALUMINIUM ARMoured, PVC SHEATHED CABLE TO SANS1507. WALL BOX HAS 4 – EXTERNAL MOUNTING HOLES; FOR USE WITH ENERGY CONTROL UNIT (ECU); FOR USE WHEN METER IS TO BE INSTALLED OUTSIDE; A FULL C.O.C. WILL BE REQUIRED AFTER INSTALLATION;
 ESKOM DRAWING No. D-DT-3171 *

SAP MATERIAL No.:	0171710
SHORT DESCRIPTION:	BASE:PASSIVE BASE UNIT WITH RAILS

TECH. DESCRIPTION:

BASE: TYPE: PASSIVE BASE UNIT WITH RAILS; WIDTH: 148 MM; LENGTH: 260 MM; HEIGHT: 40 MM; MATERIAL: THERMO PLASTIC; SPECIFICATION: ESKOM:240-75660815; SANS 1507; APPLICATION: PREPAYMENT METER; STANDARD PASSIVE BASE; SURGE ARRESTER INSTALLED; NEUTRAL LINKED TO EARTH; STANDARD WALL BOX WITH 2 OFF SWITCHED SOCKET; WALL BOX PREWIRED WITH PASSIVE BASE TERMINALS; PASSIVE BASE CONNECTED TO WALL OUTLET BOX WITH 2.5MM SQ. PVC INSULATED COPPER WIRES (LIVE, NEUTRAL AND EARTH); WIRES PROTECTED IN A FLEXIBLE CONDUIT; WALL BOX HAS 4 EXTERNAL MOUNTING HOLES; MOUNTED ON 2 STEEL RAILS: WIDTH 35 + 10MM X 500 + 10MM LENGTH; FOR USE WITH ENERGY CONTROL UNIT (ECU); SUPPLIED WITH PARTIALLY COMPLETED INSTALLATION CERTIFICATE IN TRIPLICATE;
 ESKOM DRAWING No. D-DT-3171 *

15	1 x 63A DIN MOUNTED 2 POLE ISOLATOR ADDED	J.S.	J. MAUDU	24-02-2025			
14	SAP NUMBER 0662599 AND 0670652 ADDED.	J.S.	M.NGCWAMA	J. MAUDU	30.05.2023		
13	KIT:SPLIT METER READYBOARD RETROFIT ADDED	P.A.T.	J. MAUDU	J. MAUDU	01.08.2018	(D-DT-3236) METER BOX (EMPTY) AND MOUNTING	
REV	REVISION DESCRIPTION	BY	CHKD	AUTH	DATE	REF. DWGS	
AUTH:	P. CROWDY	DATE:	31.10.1996	 D-DT-3171	SAP No:		
CHKD:	P. NOWOSAD	DATE:	31.10.1996		0171705		
DRAWN:	P.A. VERMAAK	DATE:	24.5.1996		0171710		
					SET	SHEET	REV
					7	2	15



SAP MATERIAL No.:	0171647
SHORT DESCRIPTION:	BASE:STANDARD PASSIVE UNIT ED

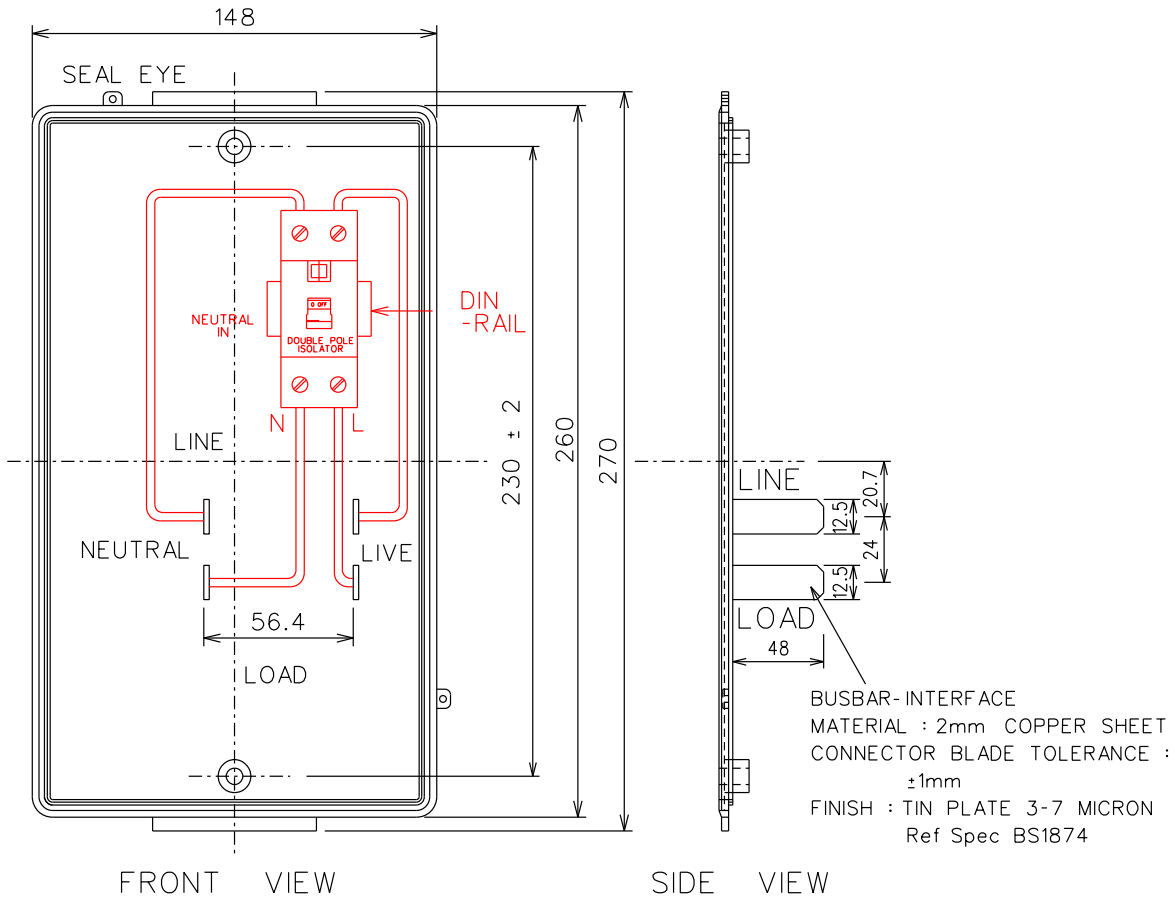
TECH. DESCRIPTION:

BASE: TYPE: STANDARD PASSIVE UNIT ED; WIDTH: 148 MM; LENGTH: 260 MM; HEIGHT: 40 MM; MATERIAL: THERMO PLASTIC; SPECIFICATION: ESKOM: 240-75660815; APPLICATION: PREPAYMENT METER; STANDARD PASSIVE BASE; SURGE ARRESTER INSTALLED; NEUTRAL LINKED TO EARTH; PASSIVE BASE, ED USED WITH STANDARDISED ELECTRICITY DISPENSER; TO BE USED WITH ED'S ONLY;

ESKOM DRAWING No. D-DT-3171 *

15	1 x 63A DIN MOUNTED 2 POLE ISOLATOR ADDED	J.S.	J. MAUDU		24-02-2025	
14	SAP NUMBER 0662599 AND 0670652 ADDED.	J.S.	M.NGCWAMA	J. MAUDU	30.05.2023	
13	KIT:SPLIT METER READYBOARD RETROFIT ADDED	P.A.T.	J. MAUDU	J. MAUDU	01.08.2018	(D-DT-3236) METER BOX (EMPTY) AND MOUNTING

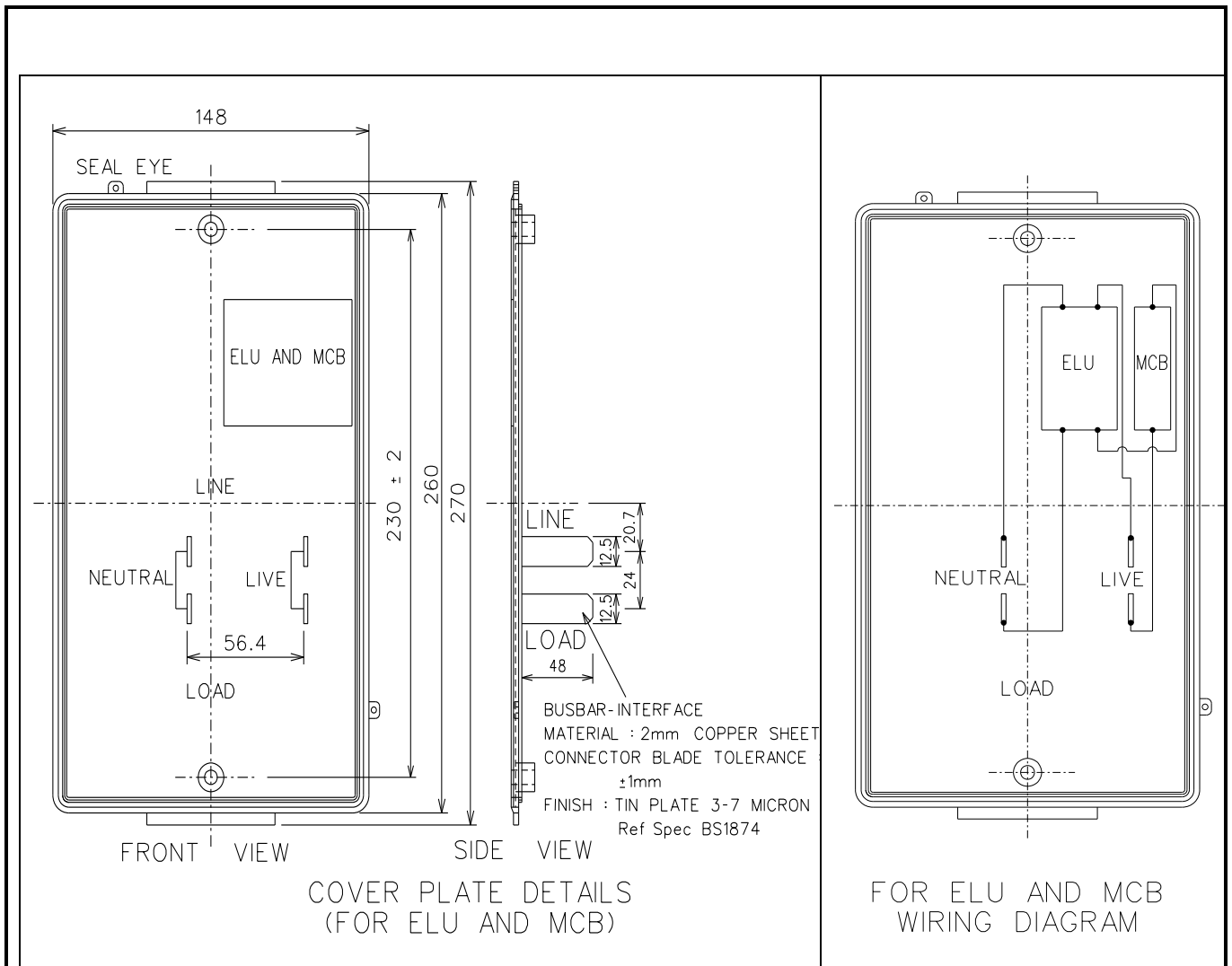
REV	REVISION DESCRIPTION			BY	CHKD	AUTH	DATE	REF. DWGS		
AUTH:	P. CROWDY	DATE:	31.10.1996	SCALE		SAP No:				
CHKD:	P. NOWOSAD	DATE:	31.10.1996	NTS		0171647				
DRAWN:	P.A. VERMAAK	DATE:	24.5.1996	CAD REF:		SET	SHEET	REV		
				SERIES\3000	D-DT-3171			7	3	15
				FILE No:						
				3171						



COVER PLATE DETAILS

SAP MATERIAL No.:	0575056
SHORT DESCRIPTION:	COVER ACCESS:PROTECTIVE;IVORY B77;GLOSS
TECH. DESCRIPTION:	
COVER, ACCESS: TYPE: PROTECTIVE; COLOR: IVORY B77; DIMENSIONS: WD 150 X LG 250 X THK 3 MM; FINISH: GLOSS; MOUNTING: SCREWS; SHAPE: RECTANGULAR; MATERIAL: POLYCARBONATE (MIN V1); APPLICATION: ACCESS PROTECTIVE COVER FOR PREPAYMENT METER, SUITABLE TO FIT ONLY INTO ED (60A SUPPLIES) STANDARD PASSIVE UNIT BASE; SUPPLIED WITH: 1 X 63A DIN MOUNTED 2 POLE ISOLATOR; ESKOM DRAWING No. D-DT-3171 *	

15	1 x 63A DIN MOUNTED 2 POLE ISOLATOR ADDED	J.S.	J. MAUDU		24-02-2025			
14	SAP NUMBER 0662599 AND 0670652 ADDED.	J.S.	M.NGCWAMA	J. MAUDU	30.05.2023			
13	KIT:SPLIT METER READYBOARD RETROFIT ADDED	P.A.T.	J. MAUDU	J. MAUDU	01.08.2018	(D-DT-3236) METER BOX (EMPTY) AND MOUNTING		
REV	REVISION DESCRIPTION	BY	CHKD	AUTH	DATE	REF. DWGS		
AUTH:	P. CROWDY	DATE:	31.10.1996			SAP No:		
CHKD:	P. NOWOSAD	DATE:	31.10.1996			0575056		
DRAWN:	P.A. VERMAAK	DATE:	24.5.1996			SET	SHEET	REV
		SCALE	NTS	D-DT-3171		7	4	15
		CAD REF:	SERIES\3000					
		FILE No:	3171					

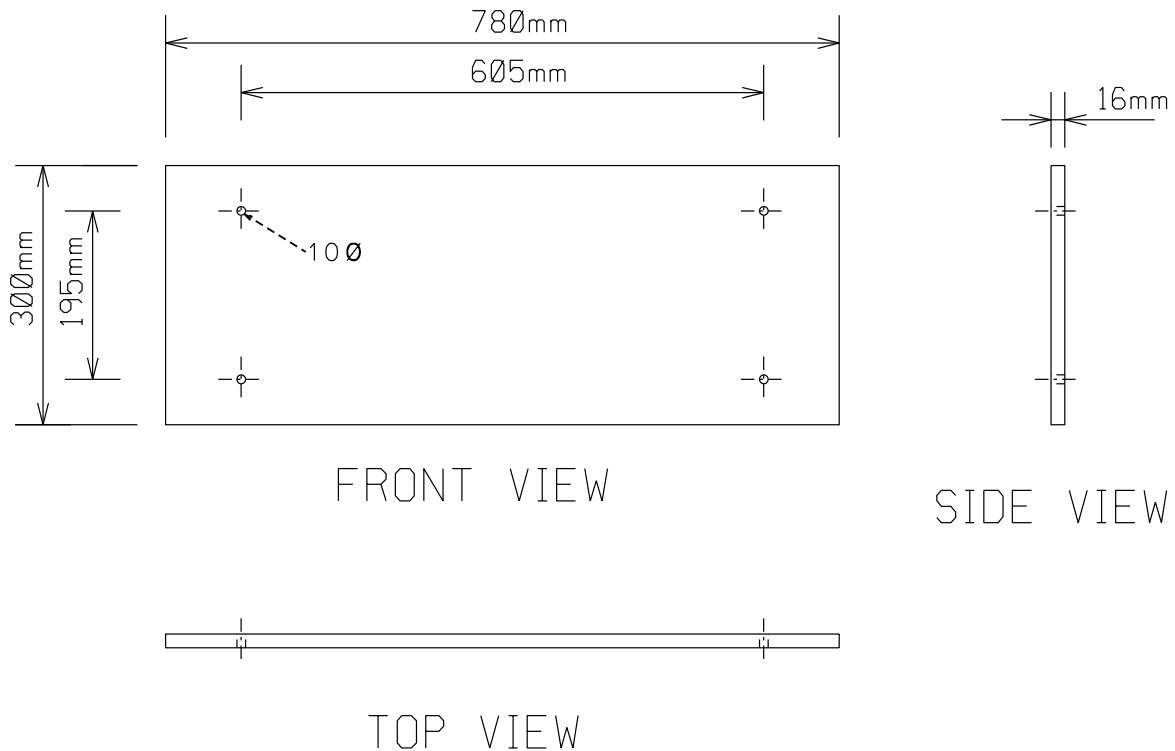


SAP MATERIAL No.: 0643155
 SHORT DESCRIPTION: KIT:SPLIT METER READYBOARD RETROFIT

TECH. DESCRIPTION:
 KIT: TYPE: SPLIT METER READYBOARD RETROFIT; APPLICATION: SMALL POWER DISTRIBUTION UNIT FOR SPLIT PREPAYMENT METER, SUITABLE TO FIT ONLY INTO ECU STANDARD PASSIVE UNIT BASE; COMPRISING: 63 A EARTH LEAKAGE UNIT AND 20 A MCB; SPECIFICATION: ESKOM:240-75659896; DIMENSIONS: WD 148 X LG 260 MM; MOUNTING: SCREWS; SHAPE: RECTANGULAR; BLADE MATERIAL: 2MM COPPER SHEET CONNECTOR BLADE TOLERANCE OF APPROXIMATELY 1MM; FINISH: NICKEL PLATE: 3-7 MICRON; COVER MATERIAL: POLYCARBONATE (MIN V1); COLOUR FOR READYBOARD COVER: IVORY; SUPPLIED WITH DRILLED HOLES FOR KEYPAD MOUNTING; READYBOARD RETROFIT TO BE SUPPLIED WITH AN ABRIDGED COC; ESKOM DRAWING No. D-DT-3171 *

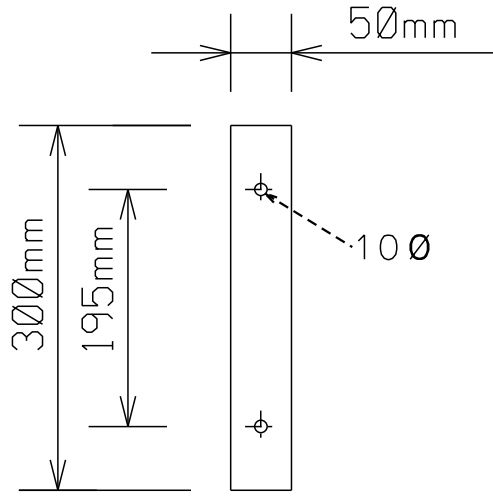
15	1 x 63A DIN MOUNTED 2 POLE ISOLATOR ADDED	J.S.	J. MAUDU		24-02-2025			
14	SAP NUMBER 0662599 AND 0670652 ADDED.	J.S.	M.NGCWAMA	J. MAUDU	30.05.2023			
13	KIT:SPLIT METER READYBOARD RETROFIT ADDED	P.A.T.	J. MAUDU	J. MAUDU	01.08.2018	(D-DT-3236) METER BOX (EMPTY) AND MOUNTING		
REV	REVISION DESCRIPTION	BY	CHKD	AUTH	DATE	REF. DWGS		
AUTH:	P. CROWDY	DATE:	31.10.1996			SAP No:		
CHKD:	P. NOWOSAD	DATE:	31.10.1996			0643155		
DRAWN:	P.A. VERMAAK	DATE:	24.5.1996			D-DT-3171		
			SCALE NTS			SET	SHEET	REV
			CAD REF: SERIES\3000			7	5	15
			FILE No: 3171					

FOR TIN STRUCTURE

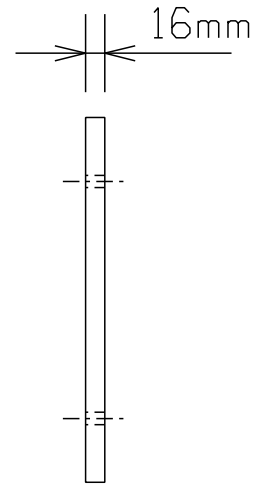


SAP MATERIAL No.:		0662599							
SHORT DESCRIPTION:		PLATE MNTG:READYBOARD TIN STRUCTURE							
TECH. DESCRIPTION:									
PLATE, MOUNTING: TYPE: READYBOARD TIN STRUCTURE; DIMENSIONS: LG 780 X HT 300 X THK 16 MM; MATERIAL: WOOD; APPLICATION: MOUNTING READY BOARD ON TIN SURFACE; THE BACK-BOARD MUST BE MADE OF HARDBOARD OR MELAMINE BOARD; BACK-BOARD MUST BE CUT TO SIZE AND DRILLED BY THE SUPPLIER; 3.THE EDGES OF THE BACK-BOARD MUST BE EDGED BY THE SUPPLIER USING A 0.4MM PVC OR VENEER EDGING; WATERPROOFING WASHERS SHOULD BE USED IN CONJUNCTION WITH RUBBERISED GASKET ON THE OUTERWALL OF THE SHACK; SUPPLIED WITH 4X M10 MOUNTING BOLTS AND NUTS; ESKOM DRAWING No. D-DT-3171 *									
15	1 x 63A DIN MOUNTED 2 POLE ISOLATOR ADDED			J.S.	J. MAUDU		24-02-2025		
14	SAP NUMBER 0662599 AND 0670652 ADDED.			J.S.	M.NGCWAMA	J. MAUDU	30.05.2023		
13	KIT:SPLIT METER READYBOARD RETROFIT ADDED			P.A.T.	J. MAUDU	J. MAUDU	01.08.2018		
(D-DT-3236) METER BOX (EMPTY) AND MOUNTING									
REV	REVISION DESCRIPTION			BY	CHKD	AUTH	DATE		
AUTH:	P. CROWDY	DATE:	31.10.1996	SCALE	Eskom		SAP No:		
CHKD:	P. NOWOSAD	DATE:	31.10.1996	CAD REF:			0662599		
DRAWN:	P.A. VERMAAK	DATE:	24.5.1996	SERIES\3000			SET	SHEET	REV
				FILE No:	D-DT-3171		7	6	
				3171				15	

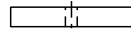
FOR MUD STRUCTURE



FRONT VIEW



SIDE VIEW



TOP VIEW

SAP MATERIAL No.:	0670652
-------------------	---------

SHORT DESCRIPTION:	PLATE MNTG:READYBOARD MUD STRUCTURE
--------------------	-------------------------------------

TECH. DESCRIPTION:
 PLATE, MOUNTING: TYPE: READYBOARD MUD STRUCTURE;
 DIMENSIONS: LG 300 X HT 50 X THK 16 MM; MATERIAL: WOOD;
 APPLICATION: MOUNTING READY BOARD ON MUD STRUCTURE;
 SUPPLIED WITH: 4X M10 X 250MM THREADED RODS;
 4X WOODEN PLANKS MADE OF HARDBOARD OR MELAMINE BOARD;
 PLANK MUST BE CUT TO SIZE AND DRILLED BY THE SUPPLIER;
 ESKOM DRAWING No. D-DT-3171 *

15	1 x 63A DIN MOUNTED 2 POLE ISOLATOR ADDED	J.S.	J. MAUDU	24-02-2025		
14	SAP NUMBER 0662599 AND 0670652 ADDED.	J.S.	M.NGCWAMA	J. MAUDU	30.05.2023	
13	KIT:SPLIT METER READYBOARD RETROFIT ADDED	P.A.T.	J. MAUDU	J. MAUDU	01.08.2018	(D-DT-3236) METER BOX (EMPTY) AND MOUNTING

REV	REVISION DESCRIPTION		BY	CHKD	AUTH	DATE	REF. DWGS	
AUTH:	P. CROWDY	DATE:	31.10.1996	 D-DT-3171		SAP No:		
CHKD:	P. NOWOSAD	DATE:	31.10.1996			0670652		
DRAWN:	P.A. VERMAAK	DATE:	24.5.1996			SET	SHEET	REV
				3171	7	7	15	