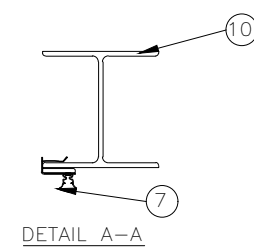
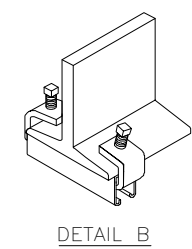


LIST OF MATERIALS (PER DETAIL)			
ITEM	DESCRIPTION	SIZE	QTY
1	POWERMITE - WELDING SOCKET OUTLET, A3112		1
2	PRATLEY/CCG IP68 4-WAY JUNCTION BOX	SIZE 2	1
3	O-LINE - OL1000	*	TO SUIT
4	PLATE 5mm THK	*	
5	O-LINE - CLAMP - OL-ZB01	*	
6	LINDAPTER	*	4
7	CABSTRUT CABLE E-KLIP, EH1420-JM2933 *		
8	PIPE CONDUIT	*	Ø30mm
9	NYLON END CAP		2
10	I-BEAM/UNISTRUT CHANNEL	AS PER STRUC.	
11	O-LINE SPRING NUT	*	M6
12	O-LINE - OL1271	*	8
13	BOLT, WASHER AND SPRING WASHER	*	M8
14	O-LINE SPRING NUT	*	M8
15	BOLT, WASHER AND SPRING WASHER	*	M6

* GALVANISED OR CORROSION PROTECTED.



- NOTES:
- FOR PAINTING SPEC. REFER TO GENERAL PAINT SPEC.
 - IP44 SPLASHROOF. DUAL INTERLOCKED SOCKET - METAL WITH INTEGRATED EARTH LEAKAGE

REVISION No	DATE	DESCRIPTION
A	29/11/24	ISSUED FOR TENDER

REVISIONS
SIZE ON ORIGINAL DRAWING 100 mm



INSTITUTION
LEPELLE NORTHERN WATER

SERVICE
PHALABORWA WATER TREATMENT PLANT

CONTRACT - SECTION
BARRAGE AND RAW WATER PUMP STATION

DISCIPLINE PROJECT STAGE
ELECTRICAL DRAWINGS 3

DRAWING DESCRIPTION			
FILE No.	DESIGN	SCALE	ITEM No.
T MOROASW	M NDLOUW	T MOROASW	DRAWN
NTC	T MOROASW		CHECKED
RESPONSIBLE PROFESSIONAL			
DATE	NAME	SIGNATURE	PR NUMBER
29/11/2024	T MOROASW	[Signature]	20070201
DRAWING CO-ORINATED			

CONSULTANT:
shweni
46 HORNBILL AVENUE
ROOIHUISEKRAAL EX 1
0157

CONTRACTOR:

PO Box 55898
WIERDA PARK 6149
Tel: 087 231 1603
Fax: 086 612 6890
info@shweni.co.za

FOR TENDER PURPOSES

CARD SYSTEM	SHEET 1 OF 1	FILE NAME
SIZE	DRAWING NUMBER	REV
A3	SCE-2301-100-DRW-E006-01	A