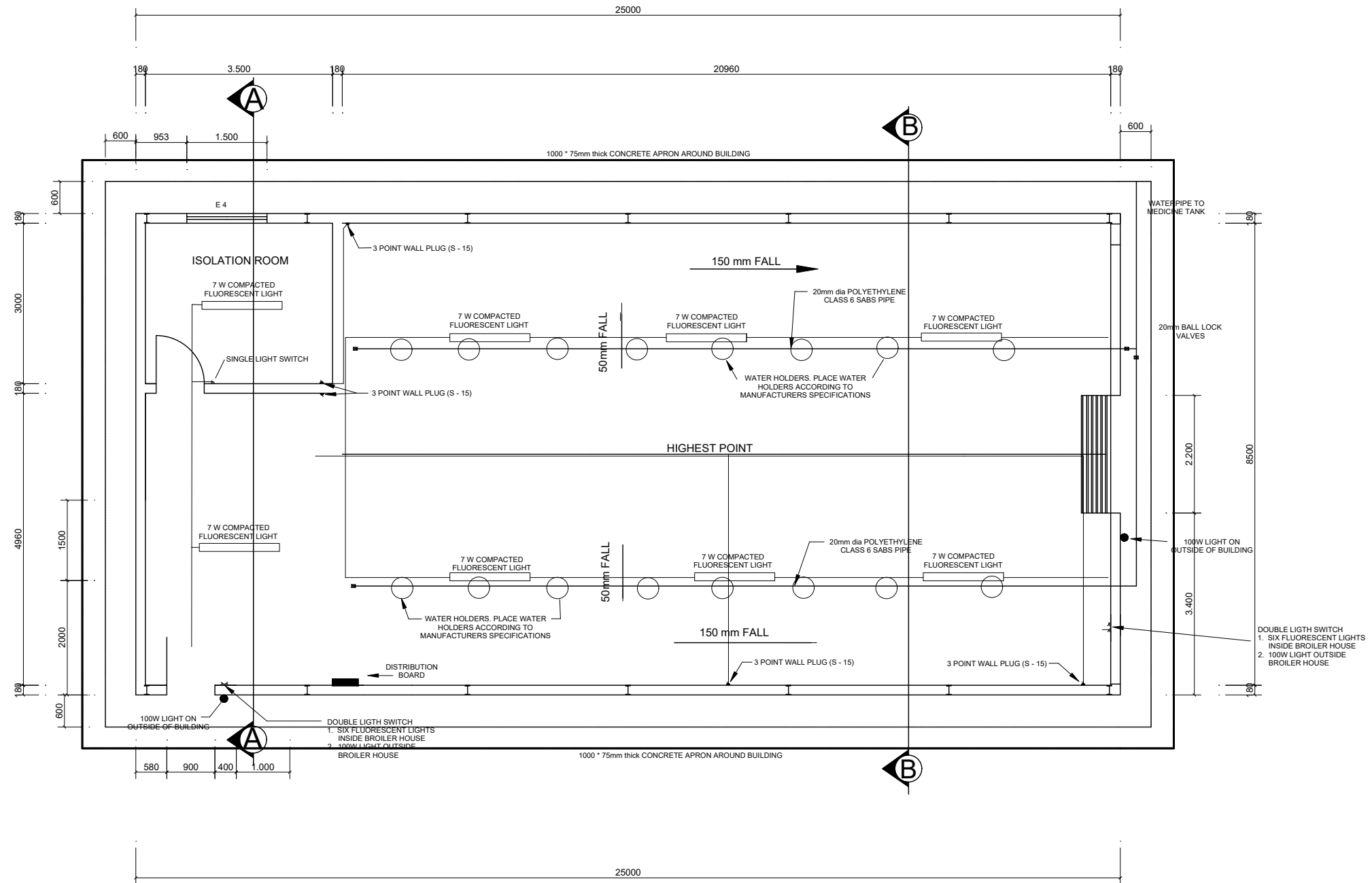


## SITE LAYOUT

NB: IT IS IMPORTANT THAT THE ATTENTION IS GIVEN TO THE SLOPE OF THE SITE, THE DRAINING TOWARDS THE SITE, AND THE DRAINAGE OF RUN-OFF WATER ON SITE.

NO.	SPECIAL NOTES:	S KONDLO (CHIEF ENGINEER)	DEPARTMENT OF AGRICULTURE PROVINCE OF THE EASTERN CAPE	JONGA LA 2000 BROILER HOUSE	SCALE	INDEX NO.
1.	18m x 12m x 3.6m Portal Frame Structure with IBR roof Cladding	OCTOBER 2024 (DATE APPROVED)	ENGINEERING SERVICES PRIVATE BAG X015 DOHNE ADI STUTTERHEIM 4930	SITE LAYOUT PLAN	A3 ORIGINAL	PLAN NO. SHEET 1 OF 8
2.	Brick & Mortar wall up to roof level					
3.	Sheep Plunge Dip with sloping dripping slab.					
4.	Evaporation Pond.					
5.	Pit Toilet.					
6.	Perimeter Fence.					



NO.	SPECIAL NOTES:
1.	150mm Reinforced Concrete floor: 25Mpa with a steel float finish
2.	250 Micron DPC under reinforced floor.
3.	150mm Ramps on 4m entries.
4.	100mm Ramps at 1.5m entries.
5.	1000x100mm Apron around the structure

S KONDLO  
(CHIEF ENGINEER)

OCTOBER 2024  
(DATE APPROVED)

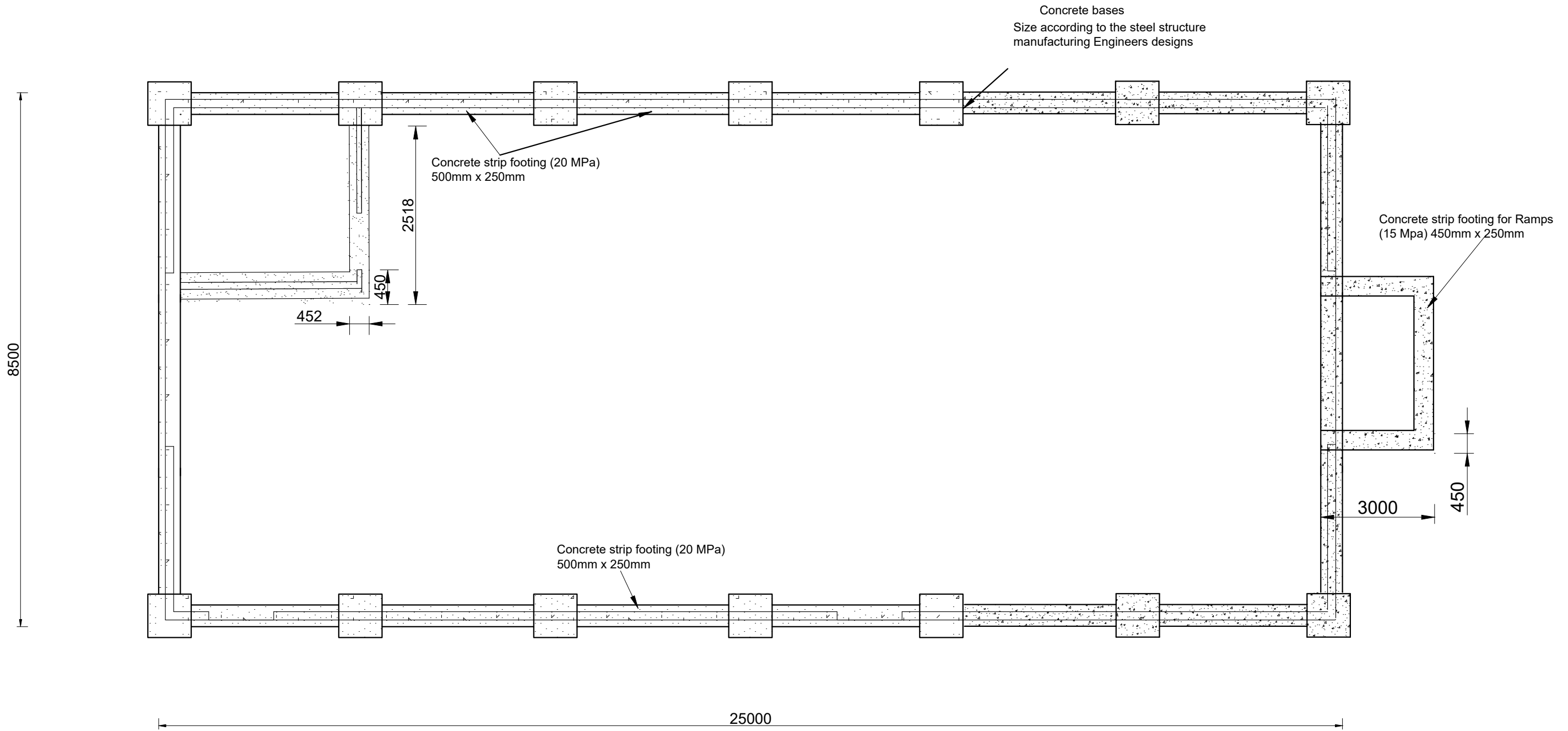
**DEPARTMENT OF AGRICULTURE  
PROVINCE OF THE EASTERN CAPE**

ENGINEERING SERVICES  
PRIVATE BAG X015  
DOHNE ADI  
STUTTERHEIM  
4930

**JONGA LA 2000 BROILER HOUSE**

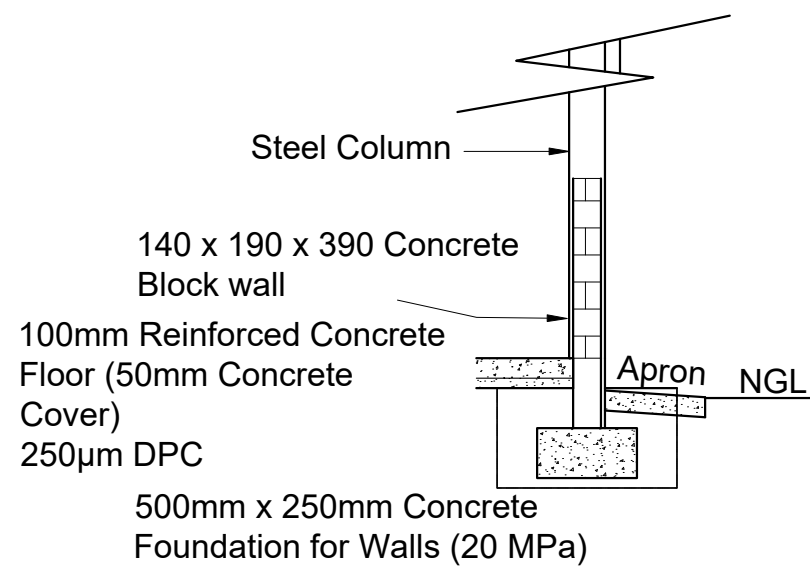
**FLOOR LAY-OUT PLAN**

SCALE	INDEX NO.
NTS	SCMM-03/33/02
A3 ORIGINAL	PLAN NO. SHEET 2 OF 8

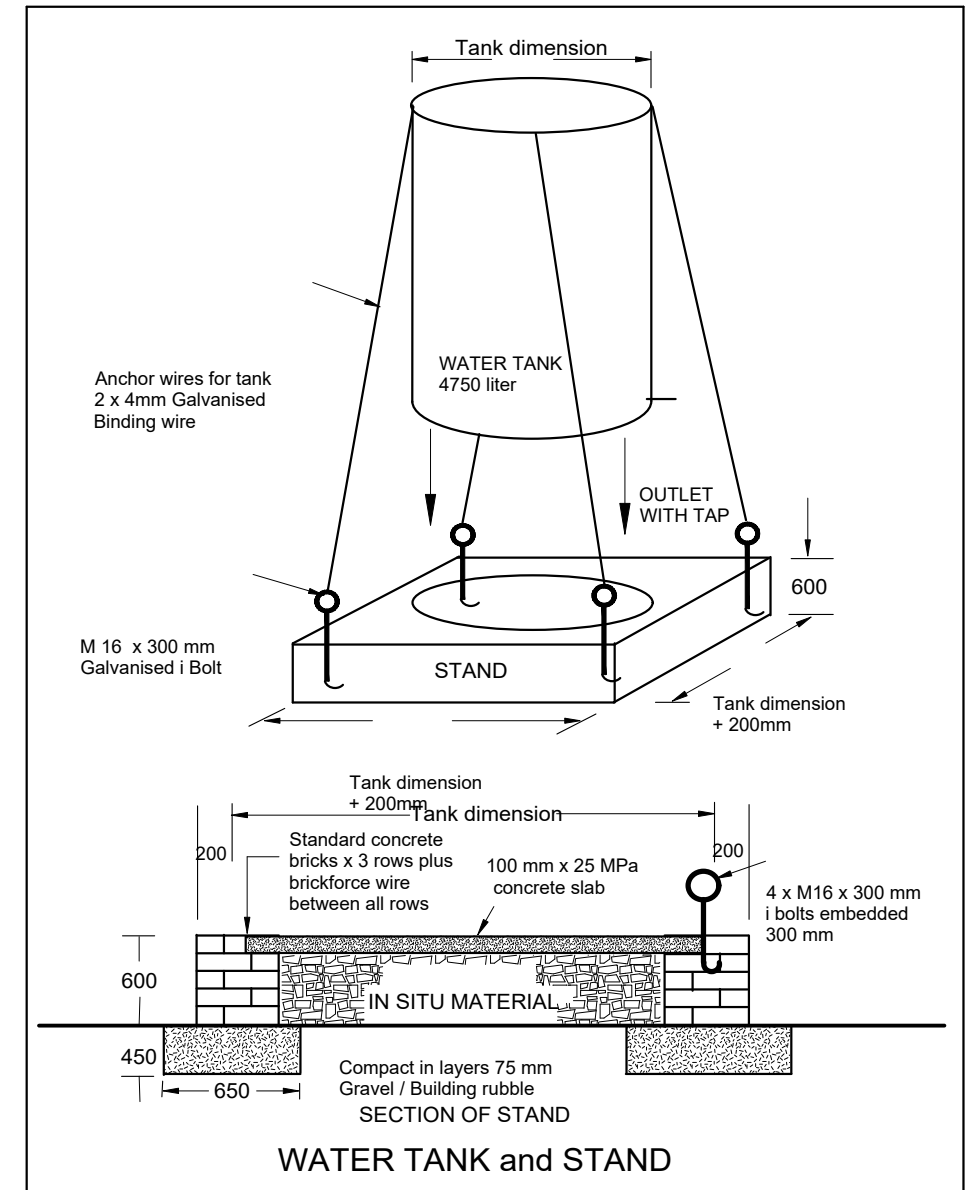


**FOUNDATION PLAN**

NO.	SPECIAL NOTES:	S KONDLO (CHIEF ENGINEER)	DEPARTMENT OF AGRICULTURE PROVINCE OF THE EASTERN CAPE	JONGA LA 2000 BROILER HOUSE	SCALE	INDEX NO.
1.	Site levelling must be done before excavations for foundations.					
2.	500mm x 250mm Concrete Foundation for Walls					
3.	450mm x 250mm Concrete foundation for Ramps					
4.	Concrete bases size as per the Engineers designs					
		OCTOBER 2024 (DATE APPROVED)	ENGINEERING SERVICES PRIVATE BAG X015 DOHNE ADI STUTTERHEIM 4930	<b>FOUNDATION PLAN</b>	A3 ORIGINAL	PLAN NO. SHEET 3 OF 8

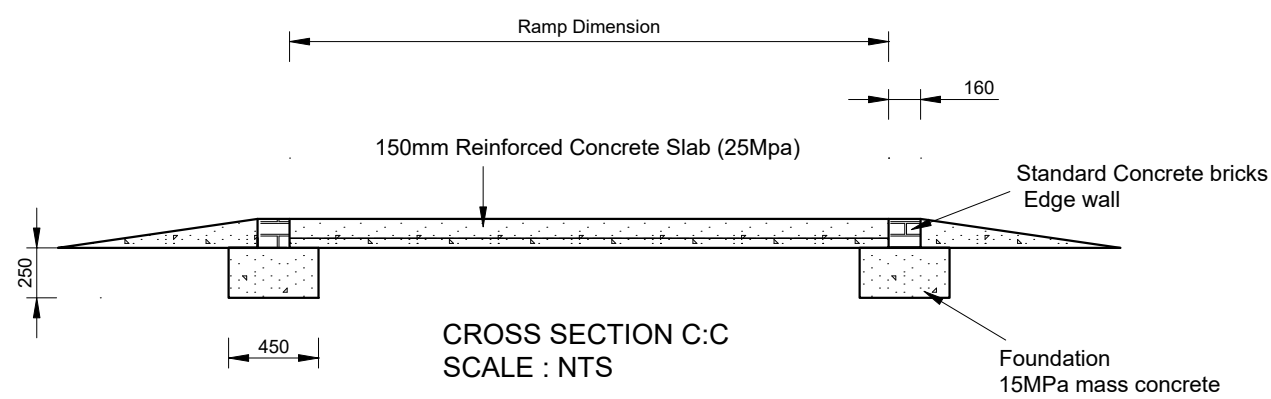


**DETAIL X**  
**SCALE : NTS**



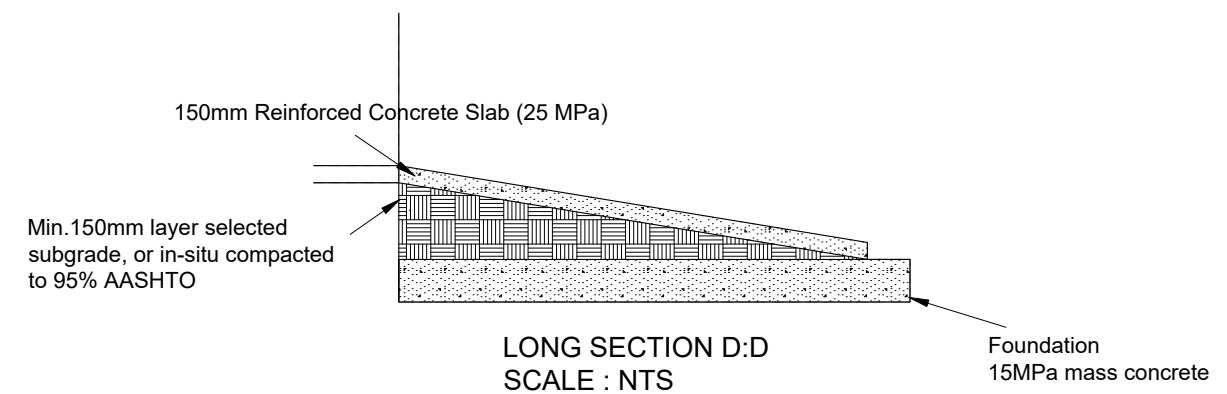
**WATER TANK and STAND**

**DETAIL OF CONCRETE RAMP**



**CROSS SECTION C:C**  
**SCALE : NTS**

Note:  
Dimensions dependant on  
site specific conditions



**LONG SECTION D:D**  
**SCALE : NTS**

NO.	SPECIAL NOTES:
1.	Concrete bases as per the Engineers designs
2.	500mm x 250mm Concrete Foundation for Walls
3.	No. 395 Steel Mesh in ramps with 50mm concrete cover.
4.	250µm DPC under floor.

S KONDLO  
(CHIEF ENGINEER)

OCTOBER 2024  
(DATE APPROVED)

**DEPARTMENT OF AGRICULTURE**  
**PROVINCE OF THE EASTERN CAPE**

ENGINEERING SERVICES  
PRIVATE BAG X015  
DOHNE ADI  
STUTTERHEIM  
4930

**JONGA LA 2000 BROILER HOUSE**

**SECTIONS AND TANK**  
**STAND**

SCALE

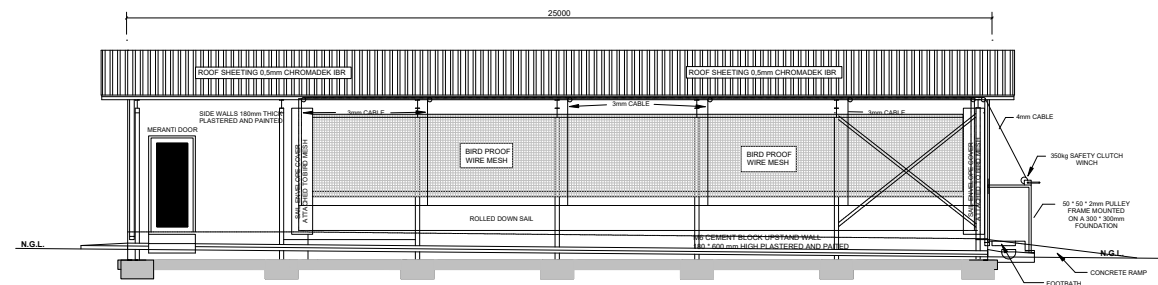
NTS

A3 ORIGINAL

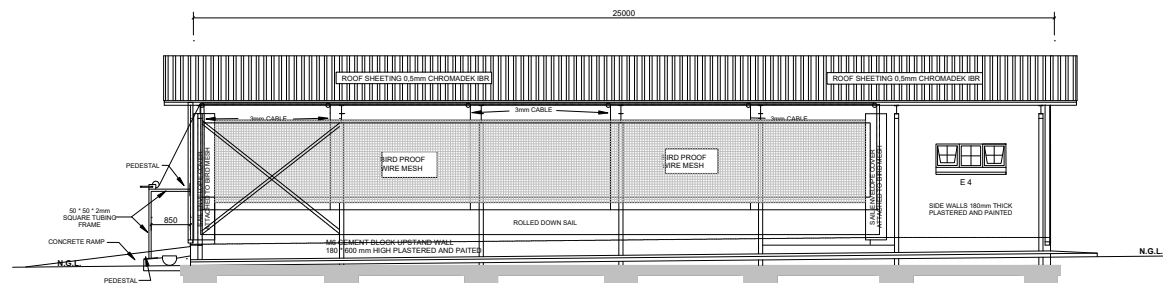
INDEX NO.

PLAN NO.

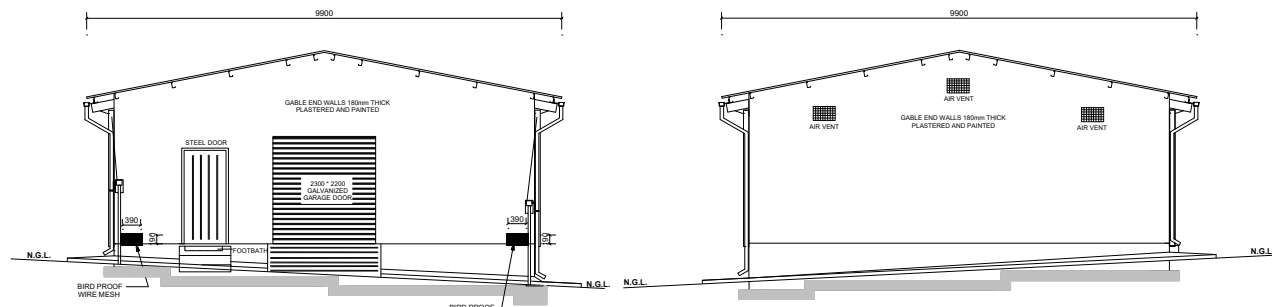
SHEET 4 OF 8



ELEVATION A  
SCALE 1:50 (On A0)



ELEVATION B  
SCALE 1:50 (On A0)



ELEVATION C  
SCALE 1:50 (On A0)

ELEVATION D  
SCALE 1:50 (On A0)

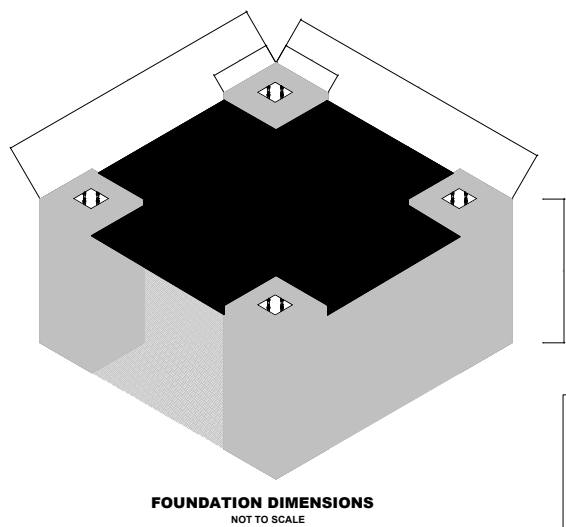
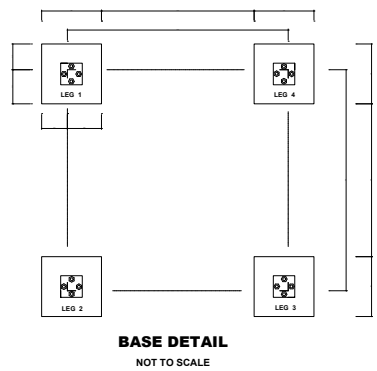
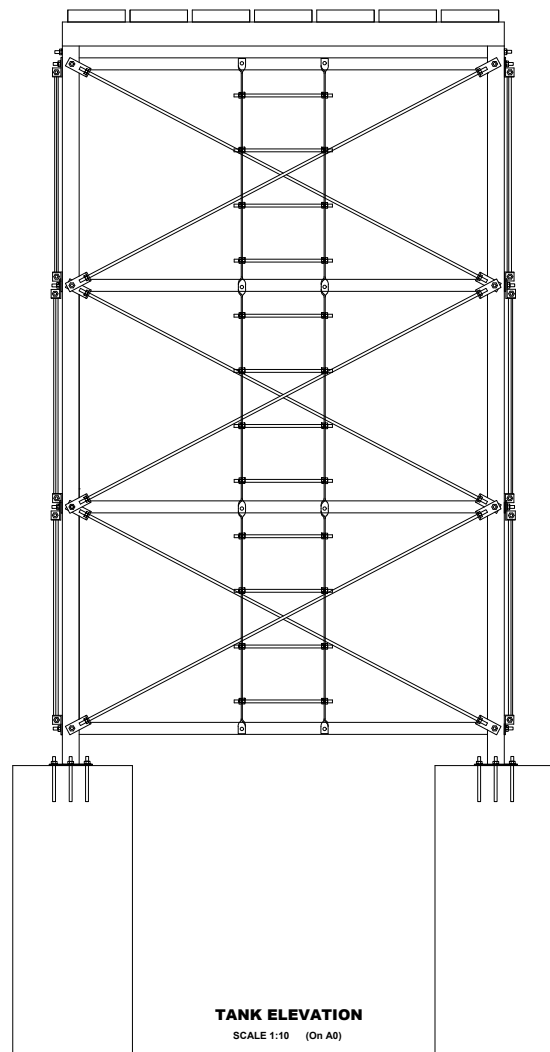
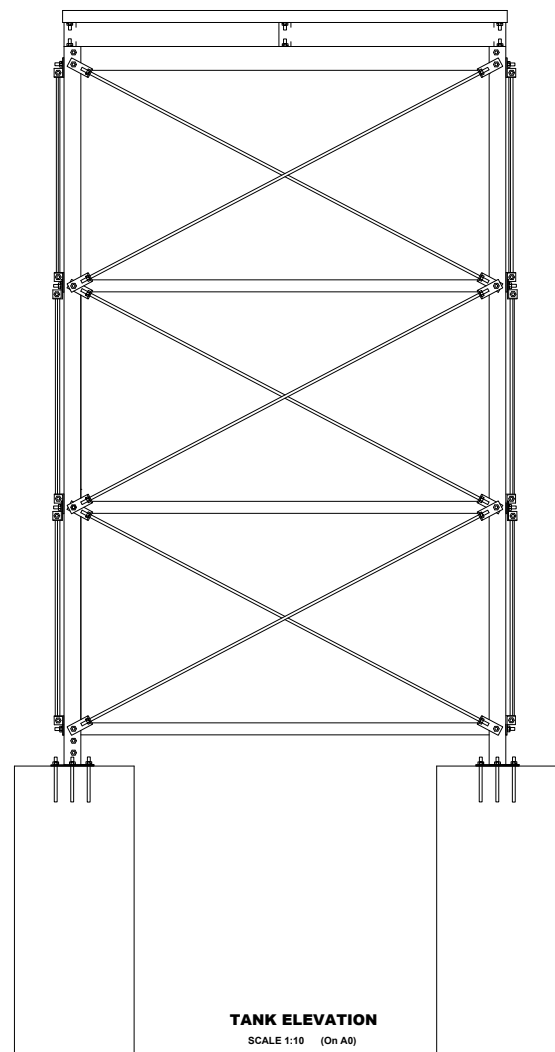
**ADDITIONAL SPECIAL**

**NOTES:**

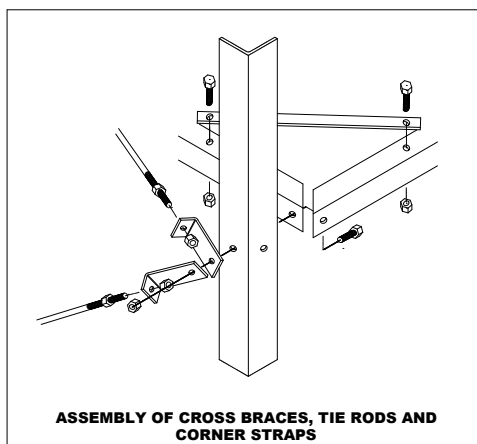
1. Contractor must supply approved Engineers drawings and design certificate.
2. 25m x 8.5m x 3m Portal frame structure.
  - The Portal frame structure must have a minimum height of 3m
  - Floor level to be at least 200mm above highest natural ground level
  - Manufacturing of the portal frame structure will not be allowed on site.
  - Painting of the Portal frame structure: One (1) coat of grey etch primer and two (2) coats of QD enamel to the columns, rafters and bracings. (On-site painting will not be allowed.)
3. All purlins and cladding supports (lip channel sections) will have a maximum spacing of 1.2m.
4. 0.5mm IBR cladding - Z275 Galvanized coating
7. Double prestressed fabricated concrete lintels above doors and windows as indicated in drawings
8. Double semi-face brick wall from foundation
9. M6 blockwall to level as indicated on drawings. (Brick-joints to be finished off neatly with a brick jointer)
9. IBR Cladding on the roof only.
11. 150mm x 100mm Aluminium Gutters with 100mm downpipes.

1. The sub-contractor/supplier of the Steel Portal Frame Structure will be: .....
2. The structure must be designed to withstand all wind-, snow-, hail- and any other applicable loads.
3. A Certificate of Compliance will be issued by the design engineer to the DOA after the completion of the structure.

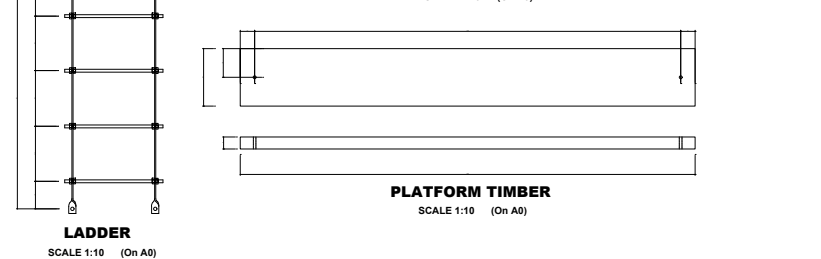
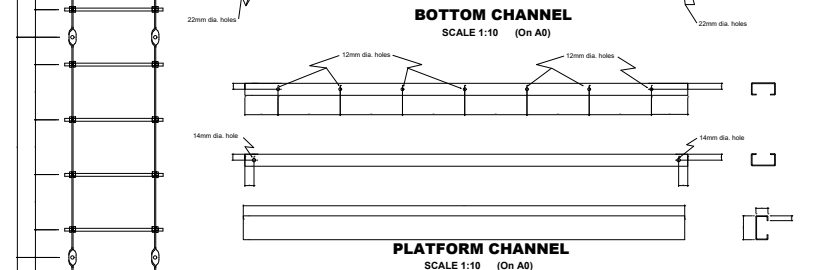
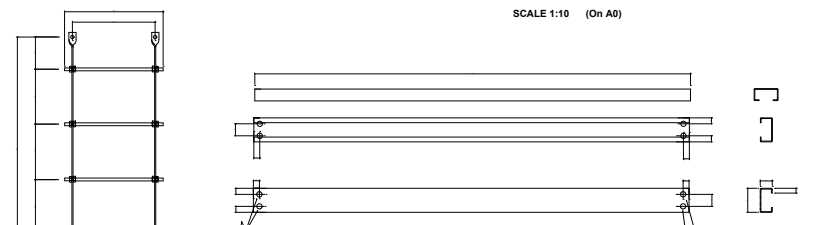
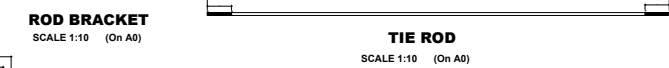
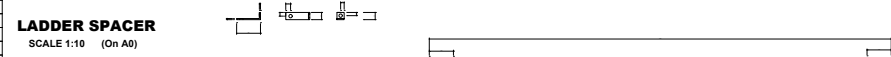
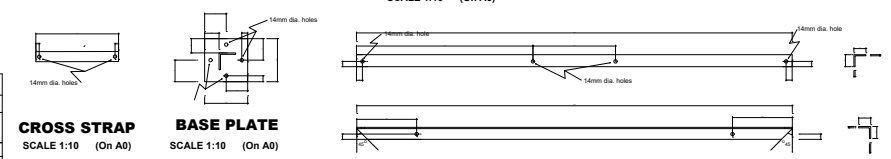
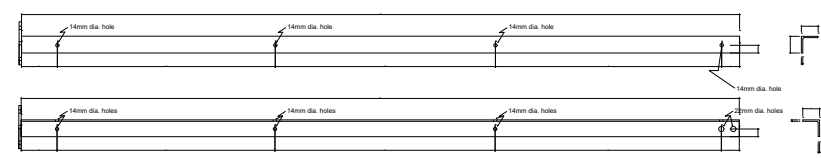
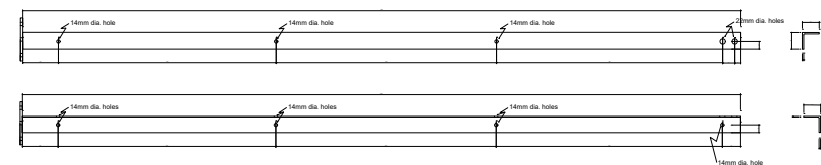
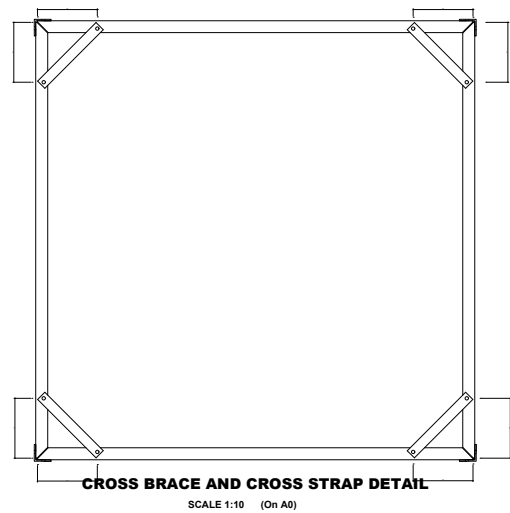
NO.	<b>SPECIAL NOTES:</b>		S KONDLO (CHIEF ENGINEER)	<b>DEPARTMENT OF AGRICULTURE PROVINCE OF THE EASTERN CAPE</b>	<b>JONGA LA 2000 BROILER HOUSE</b>	SCALE	INDEX NO.			
	1.	All excavations and reinforcing steel to be checked and approved by the Engineer before casting of concrete.				OCTOBER 2024 (DATE APPROVED)	ENGINEERING SERVICES PRIVATE BAG X015 DOHNE ADI STUTTERHEIM 4930	<b>ELEVATIONS</b>	NTS	
	2.	On-site treatment and painting of the Portal Frame Structure to be approved by the Engineer.								
	3.	On-site treatment and painting of the Portal Frame Structure to be approved by the Engineer.								
	4.	On-site treatment and painting of the Portal Frame Structure to be approved by the Engineer.								
	5.	On-site treatment and painting of the Portal Frame Structure to be approved by the Engineer.								
6.	On-site treatment and painting of the Portal Frame Structure to be approved by the Engineer.									
						A3 ORIGINAL	PLAN NO. SHEET 5 OF 8			



**NOTE:**  
WORKSHOP DRAWINGS TO BE PREPARED BY CONTRACTOR AND SUBMITTED TO THE ENGINEER FOR APPROVAL PRIOR TO MANUFACTURE.

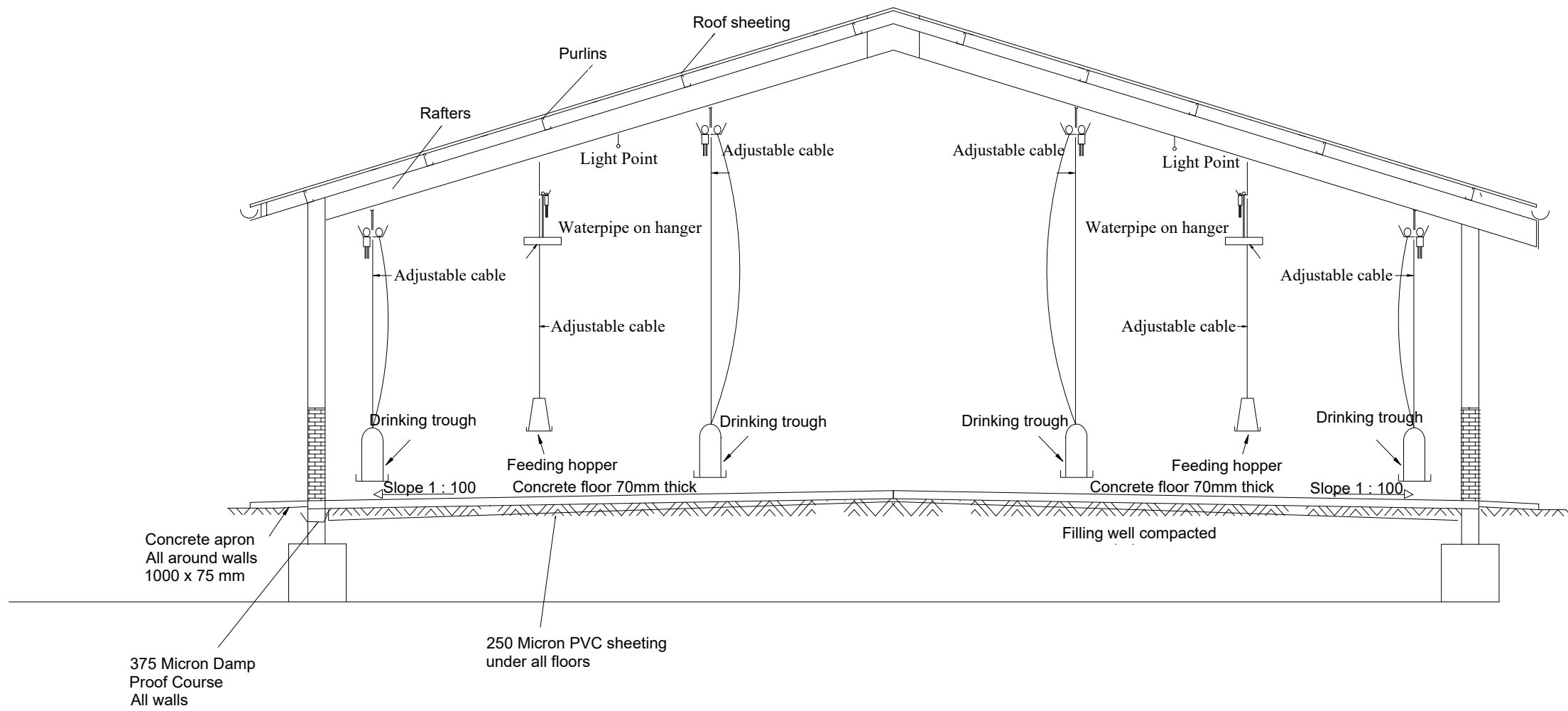


COMPONENT LIST		
Components	Size	Quantity
Main legs	Angle iron 70 * 70 * 6mm of 3000mm in length	4
Base Plate	Mild steel flat plat 180 * 150 * 10mm thick	4
Cross Brace	Angle iron 50 * 50 * 5mm of 1820mm in length	16
Bolt for Cross Straps - Tierod	M12 * 45mm with nut and spring washer	32
Tie Rods	M12 with 100mm thread at each side at 1930mm length with 4 nuts each	24
Tie Rod Brackets	Flat bar 30 * 5mm at 130mm lengths with a 30mm 90 degree bend	24
Cross Straps for corners	Flat bar 30 * 5mm at 345mm lengths	12
Bolt for Cross Straps	M12 * 25mm with nut and spring washer	24
Bottom channel for platform channel	Lipped Channel 100 * 50 * 20 * 3mm at 1846mm length	2
Bolt for bottom channel	M20 * 40mm length with nut and spring washer	8
Platform Channel	Lipped Channel 100 * 50 * 20 * 3mm at 1846mm length	3
Bolt for platform channel	M12 * 25mm with nut and spring washer	6
Platform Timber	Timber 240 * 50 mm at 1900mm length	7
Bolt for platform timber	M10 * 75mm length with nut and spring washer	14
Ladder leg	Flatbar 30 * 5mm twisted at 90 degree at every cross brace	2
Ladder step	M12 * 400mm length with 50mm thread both sides and 4 nuts.	12
Spacer for ladder	15mm int. dia. galv. pipe of 3mm thickness and 50mm length.	8
Bolt for ladder	M12 * 75mm with nut and spring washer.	8



- ERECTION INSTRUCTIONS**
1. Prepare foundations.
  2. Pour concrete. Concrete mix is 1 part cement, 2 parts sand, 4 parts stone. Ensure that foundations are 100% level and allow to cure for 7 days.
  3. Tankstand is assembled horizontally on flat, level ground adjacent to the foundations, with the base closest to the foundations. Only hand tighten bolts at this stage (do not fit platform timbers at this stage).
  4. Fit all cross braces, tie rods and cross straps, ensuring that the stand remains square.
  5. Starting from one of the stand sides, tighten the first two tie rods on the first 1m module. (The rods are considered tight once it takes up tension).
  6. Repeat step 5 on the directly opposite side.
  7. Repeat step 5, first on the one remaining side, then on the other.
  8. Repeat steps 5, 6 and 7 on the following 1m modules until completed.
  9. All remaining bolts on the tank stand may now be tightened.
  10. Fit platform timbers.
  11. Tie a suitable length of tube to the two main legs just below the lowest cross brace to form a pivot.
  12. Attach the pivot to two stakes driven into the ground to prevent the stand sliding forward during hauling up.
  13. Attach a suitable length of rope or cable to the stand top and attach guide ropes to serve as anchors.
  14. Raise the stand by pushing upwards on the underside and hauling on the rope or cable to get the stand upright.
  15. When the stand reaches the vertical position, remove the tube that served as the pivot, now the stand must be positioned in the centres of each foundation and the tank stand must be checked with a plumb to test of vertical.
  16. Drill the anchor holes and fix the stand to the foundation with chemical fasteners.

<b>SPECIAL NOTES:</b>	S KONDLO (CHIEF ENGINEER)	DEPARTMENT OF AGRICULTURE PROVINCE OF THE EASTERN CAPE	JONGA LA 2000 BROILER HOUSE	SCALE NTS	INDEX NO.
	OCTOBER 2024 (DATE APPROVED)	ENGINEERING SERVICES PRIVATE BAG X015 DOHNE ADI STUTTERHEIM 4930	ELEVATED TANK STANK	A3 ORIGINAL	PLAN NO. SHEET 6 OF 8



NO.	SPECIAL NOTES:

S KONDLO  
(CHIEF ENGINEER)

JANUARY 2026  
(DATE APPROVED)

**DEPARTMENT OF AGRICULTURE**

ENGINEERING SERVICES  
PRIVATE BAG X015  
DOHNE ADI  
STUTTERHEIM  
4930

**JONGA LA 2000 BROILER HOUSE**

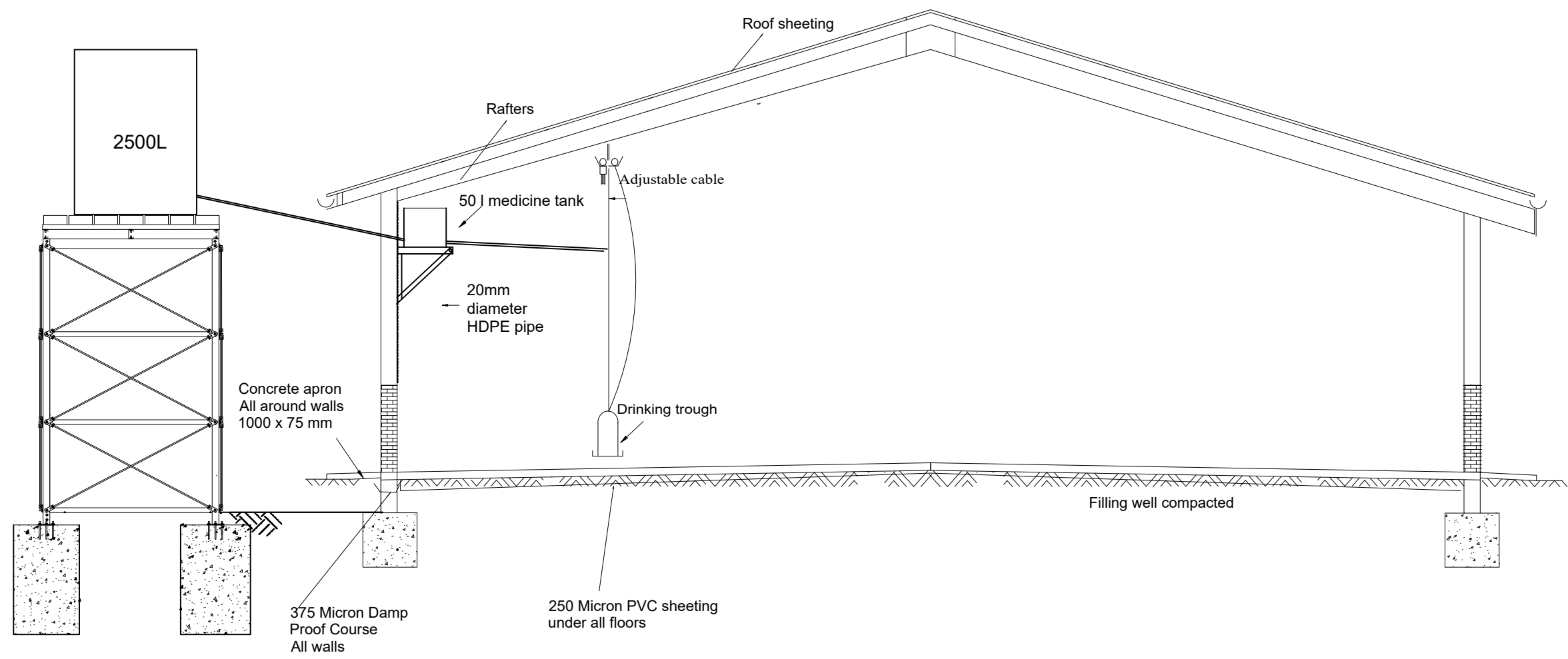
**EQUIPMENT DETAILS**

SCALE  
NTS

A3 ORIGINAL

INDEX NO.

PLAN NO.  
SHEET 7 OF 8



NO.	SPECIAL NOTES:

S KONDLO  
(CHIEF ENGINEER)

JANUARY 2026  
(DATE APPROVED)

**DEPARTMENT OF AGRICULTURE**

ENGINEERING SERVICES  
PRIVATE BAG X015  
DOHNE ADI  
STUTTERHEIM  
4930

**JONGA LA 2000 BROILER HOUSE**

**EQUIPMENT DETAILS 2**

SCALE  
NTS

A3 ORIGINAL

INDEX NO.

PLAN NO.  
SHEET 8 OF 8