



Typical Section A - A

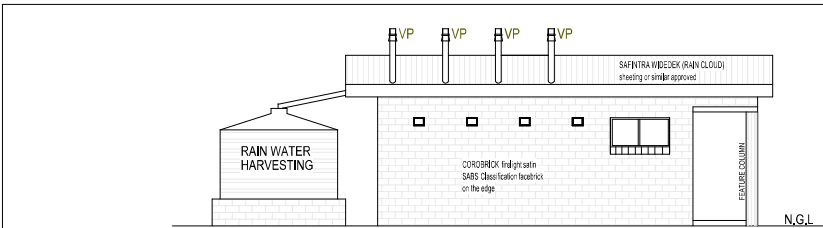
1 : 100

ADJACENT HOUSES

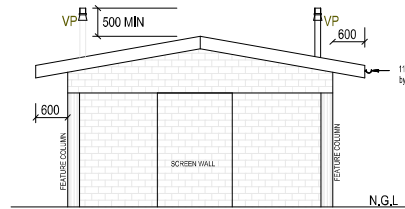
[illegible]

Site Plan

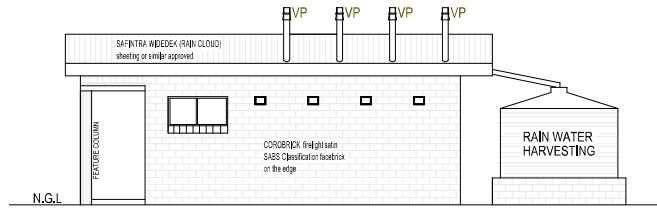
1 : 250



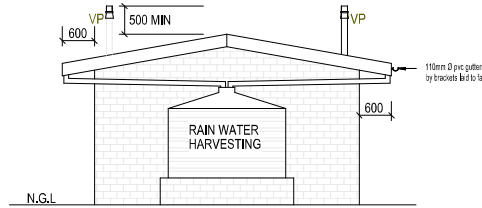
FRONT ELEVATION



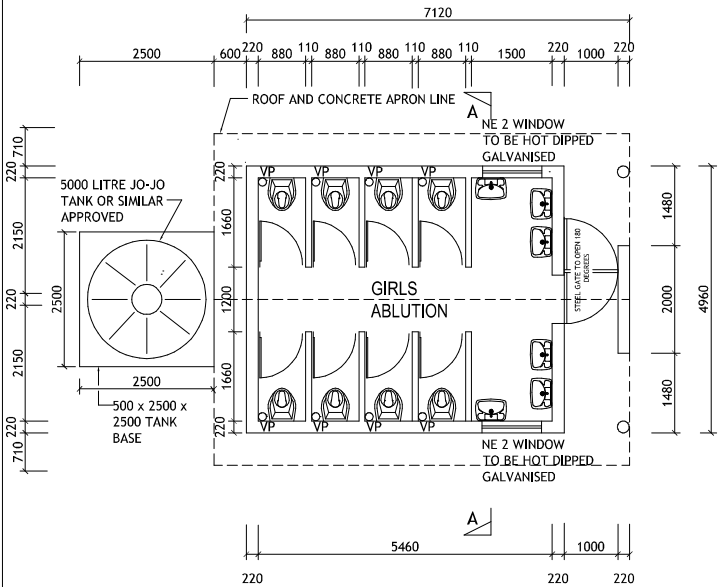
SOUTH ELEVATION



REAR ELEVATION



SECTION A - A



| ITEM | DESCRIPTION | ITEM | DESCRIPTION | ITEM | DESCRIPTION |
|------|---|------|---|------|---|
| 148H | 148H OVER 54x1.2 COMPOSITE | W2 | NO REQD : STANDARD STEEL SCHOOL RESIDENTIAL SECTION BOTTOM HUNG OPEN IN SABS APPROVED | W3 | NO REQD : STANDARD STEEL SCHOOL RESIDENTIAL SECTION BOTTOM HUNG OPEN IN SABS APPROVED |
| 148H | NO REQD : STANDARD STEEL SCHOOL RESIDENTIAL SECTION BOTTOM HUNG OPEN IN SABS APPROVED | W2 | 40mm CLEAR FLOAT GLASS WITH STEEL WINDOW PUTTY | W3 | 40mm CLEAR FLOAT GLASS WITH STEEL WINDOW PUTTY |
| 148H | STANDARD BRASS FITTINGS | W2 | STANDARD BRASS FITTINGS | W3 | STANDARD BRASS FITTINGS |
| 148H | FACTORY FITTED | W2 | FACTORY FITTED | W3 | FACTORY FITTED |
| 148H | GALVANISED | W2 | GALVANISED | W3 | GALVANISED |
| 148H | NO PAINTING REQUIRED | W2 | NO PAINTING REQUIRED | W3 | NO PAINTING REQUIRED |
| 148H | HEAVY STEEL SECTION | W2 | HEAVY STEEL SECTION | W3 | HEAVY STEEL SECTION |
| 148H | SCALE 1:1000 | W2 | SCALE 1:1000 | W3 | SCALE 1:1000 |

| ITEM | DESCRIPTION | ITEM | DESCRIPTION | ITEM | DESCRIPTION |
|------|---|------|---|------|---|
| 148H | DO NOT REQD : WITH SECURITY GATE | W2 | NO REQD : 2032 x 813 x 44mm SLUGGIM 'BLACO' LOCKED AND BRACED BATTENED DOOR WITH 40 x 110mm STILES AND TOP RAIL , 20 x 150mm MIDDLE LEDGE , 20 x 225mm BOTTOM LEDGE AND , 20 x 110mm BRACES | W3 | NO REQD : 2032 x 813 x 44mm SOLID CORNE HARDWOOD PANEL DOOR WITH COMMERCIAL VENEER |
| 148H | PRIMED , UNDERCOAT AND TWO COATS GLOSS ENAMEL | W2 | PRIMED , UNDERCOAT AND TWO COATS GLOSS ENAMEL | W3 | PRIMED , UNDERCOAT AND TWO COATS GLOSS ENAMEL |
| 148H | STANDARD 12mm DOUBLE REBATED GALVANISED PRESSED METAL FRAME FOR 115mm WALL COMPLETE WITH STRAPS FOR BUILDING IN 2000mm GALVANISED AND WELDED LOOSE PIN HINGES , ADJUST , CHROME PLATED STRIKING PLATE | W2 | STANDARD 12mm DOUBLE REBATED GALVANISED PRESSED METAL FRAME FOR 115mm WALL COMPLETE WITH STRAPS FOR BUILDING IN 2000mm GALVANISED AND WELDED LOOSE PIN HINGES , ADJUST , CHROME PLATED STRIKING PLATE | W3 | STANDARD 12mm DOUBLE REBATED GALVANISED PRESSED METAL FRAME FOR 115mm WALL COMPLETE WITH STRAPS FOR BUILDING IN 2000mm GALVANISED AND WELDED LOOSE PIN HINGES , ADJUST , CHROME PLATED STRIKING PLATE |
| 148H | GALVANISED | W2 | GALVANISED | W3 | GALVANISED |
| 148H | NO PAINTING REQUIRED | W2 | NO PAINTING REQUIRED | W3 | NO PAINTING REQUIRED |
| 148H | SOLID ART 390/134 LEVER MORTICE LOCKSET AND SATIN CHROME PLATED HANDLES , 30mm DIAMETER DOOR STOP PLUGGED AND SCREWED TO FLOOR WITH A 50mm LONG BRASS SCREW | W2 | SOLID ART 390/134 LEVER MORTICE LOCKSET AND SATIN CHROME PLATED HANDLES , 30mm DIAMETER DOOR STOP PLUGGED AND SCREWED TO FLOOR WITH A 50mm LONG BRASS SCREW | W3 | SOLID ART 390/134 LEVER MORTICE LOCKSET AND SATIN CHROME PLATED HANDLES , 30mm DIAMETER DOOR STOP PLUGGED AND SCREWED TO FLOOR WITH A 50mm LONG BRASS SCREW |
| 148H | GALVANISED SECURITY GATE AS PER DETAILS | W2 | GALVANISED SECURITY GATE AS PER DETAILS | W3 | GALVANISED SECURITY GATE AS PER DETAILS |
| 148H | SCALE 1:100 | W2 | SCALE 1:100 | W3 | SCALE 1:100 |

NOTE
ALL OVER HANGS TO BE MIN OF 450mm ON THE FRONT AND REAR FACADES AND ALL SIDE OVERHANGS TO BE MIN 300mm

GUTTERS & DOWNPIPES :
SEAMLESS ALUMINIUM OGEE GUTTERS WITH BAKED ENAMEL FINISH AND FIXED TO SUPPLIERS SPECIFICATIONS , WITH 100 x 75mm FLUTTED ALUMINIUM DOWNPIPES WITH BAKED ENAMEL FINISH AND FIXED TO SUPPLIERS SPECIFICATION

VERANDA WALKWAY :
100mm THICK CONCRETE SLAB (20 MPA) REINFORCED WITH MESH REF : 193 , SET 25mm ABOVE 250 MICRON GUNPLAS USB GREEN DPC ON 50mm TREATED AND RAMMED RIVER SAND ON FILL COMPACTED TO 95% MOD AASHTO , SLAB LAID WITH 25mm FALL AWAY FROM WALL AND CAST IN ALTERNATE PANELS OF 2000mm, CONTROL JOINTS SEALED WITH 10mm POLYSULPHIDE SEALANT WITH BACKING BACKING STRIP AND SOFTBOARD

CONCRETE APRONS / CHANNELS :
75mm THICK 20 MPA CONCRETE APRONS LAID TO A FALL OF 1:200 TO RELIEF POINTS , CAST ALTERNATE PANELS WITH A CONTROL JOINTS EVERY 2000mm, ON FILL COMPACTED TO MOD AASHTO 95%, CONTROL JOINTS TO BE SEALED WITH 10mm POLYSULPHIDE

WINDOW CILLS :
EXTERNAL CILLS TO BE ROLLER COURSE FBA FACE BRICK SET AT AN ANGLE OF 15 DEGREES , 375 MICRON EMBOSSED DAMP-PROOF MEMBRANE BELOW ALL CILLS INTERNAL CILLS TO BE EVERITE NUTEC FIBRE CEMENT PRODUCT NO.031-509) COMPLETE WITH FIXING LUGS AND SELF TAPPING SCREWS

CHALKBOARD :
4800 x 1140mm GREEN CHALKBOARD TO COMPLY WITH CKS 38-1980 SUPPLIED COMPLETE WITH CHALK RAIL AS ONE UNIT , CHALKBOARD TO BE FIXED AS PER MANUFACTURERS INSTRUCTIONS

GENERAL SPECIFICATION NOTES

| |
|--|
| FRANK LUTIX DROP - ON STAINLESS STEEL WASH TROUGH , 1 MODEL LDL , 600 x 500 x 258mm DEEP ON 1 PAIR FALCON WALL BRACKETS , WITH CORBA C , WASTE , CODE : 310 AND 1 CORBA C , 2 STAR 888 TAP |
| SANITARY SCHEDULE |
| NO. REQD |

GENERAL SPECIFICATION NOTES TO BE READ WITH STANDARD TRADE PREAMBLES VBI 20 TRADE NAMES AS SPECIFIED OR EQUAL APPROVED

FOUNDATIONS :
600 x 200mm 20 MPA CONCRETE STRIP FOOTING TO SET ON NATURAL GROUND WITH A MINIMUM COVER OF 400mm, FOUNDATIONS TO BE APPROVED BY ENGINEER , CONTROL JOINTS AT EVERY SECOND CLASSROOM OR AT EVERY 12000mm AS PER FOUNDATION DRAWING

WALLS :
ALL WALLS TO COMPLY WITH THE NATIONAL BUILDING REGULATIONS
COROBRIK FBA FACE BRICK WALLS IN STRETCHER BOND WITH RULED JOINTS AND PERPENDS INTERNALLY AND EXTERNALLY
COROBRIK NFP TO BE USED FOR PLASTERED WALLS , COROBRIK ENGINEERING BRICKS TO BE USED IN PLINTH WALLS BELOW DPC LEVEL
BRICKFORCE TO ALL COARSE FROM WINDOW HEAD TO UNDERSIDE OF WALL PLATE
GALVANISED CRIMP WIRE TIE TO BE LAID STAGGERED (7 PER SQUARE METER)
EXTERNAL FACE OF INTERNAL SKIN OF 230mm WALLS TO BE BAG WASHED AND PAINTED WITH BITUMEN
BEAM FILLING TO UNDERSIDE OF ROOF SHEETS
EXPANSION JOINTS AS INDICATED ON PLAN TO BE FORMED WITH A CONTINUOUS STRIP OF 12mm BITUMEN IMPREGATED SOFTBOARD BETWEEN 230mm BRICK WALLS , TO BE SEALED INTERNALLY AND EXTERNALLY WITH 10mm DEEP POLYSULPHIDE SEALANT

AIR-BRICKS :
229 x 152mm TERRA-COTTA VERMIN PROOFED AIR-BRICKS AS INDICATED ON GABLE ELEVATIONS

PLASTER :
INTERNAL PLASTER TO BE 13 to 16mm THICK, CEMENT SAND RATIO OF 1:5, PLASTER SEALED , 1 UNDERCOAT , 2 COATS , WALL N ALL EMULSION PAINT , COLOUR TO BE APPROVED

FLOORS :
100mm THICK POWER FLOATED CONCRETE SLAB (20MPA) REINFORCED WITH MESH REF : 193, SET 25mm ABOVE 250 MICRON GUNPLAS USB GREEN DPC ON 50mm TREATED AND RAMMED RIVER SAND ON CLEAR BATH FILL IN LAYERS NOT EXCEEDING 150mm, TO BE WELL WATERED AND COMPACTED TO 90% MOD AASHTO , SOIL TO BE POISONED IN ACCORDANCE WITH SABS 1165, CERTIFICATE MUST BE PROVIDED

GENERAL SPECIFICATION NOTES

ENDORCEMENTS

All dimensions to be checked on site, any discrepancies to be reported to the Architect.
Figured dimensions are to be used at all times & drawings are not to be scaled at any time.
All structural elements are to the engineer's design & detailing

| REVISION | DESCRIPTION | DATE |
|----------|-------------|------|
| | | |
| | | |
| | | |

LEGEND

CLIENT'S SIGNATURE

CONSULTING ENGINEERS: YEMSA

AGENT'S SIGNATURE

DBSA

Jamesa (Pty) Ltd

NZUZO M ARCHITECTURE & PROJECT MANAGEMENT

SUSTAINABLE DESIGN SOLUTION

Pc No. : PSAT20636
Nzuzo Mhembu
SUITE 9
92 CROMPTON STREET
PINETOWN
3600

nzuzo@nzuzomarkp.com
POSTAL ADDRESS
P.O BOX 205
PINETOWN
3600

(w) 031 701 9682
(c) 073 453 1672
(f) 086 607 2551
AUTHOR'S SIGNATURE

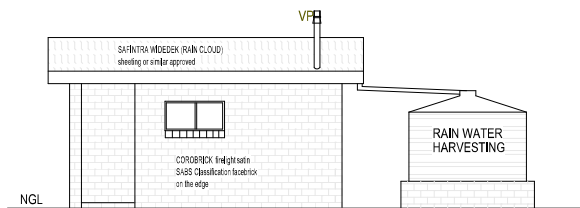
PROPOSED ASBESTOS REPLACEMENT AT CEKAZI PRIMARY SCHOOL

SITE DEVELOPMENT PLAN

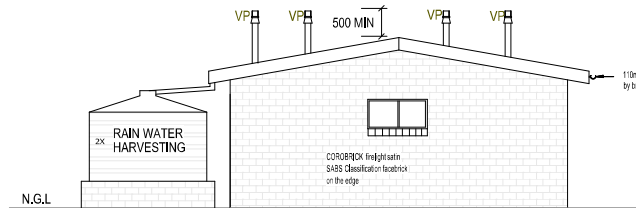
DRAWN BY: N. P. M. CHECKED BY: NN MTHAMBU

SHEET NUMBER: DRAWING NUMBER: CFK-100 REVISION: 0

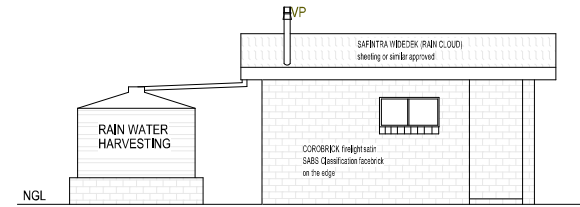
SCALE: AS SHOWN DATE: 07 - 10 - 22



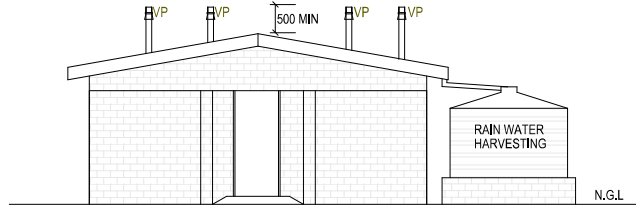
SOUTH ELEVATION



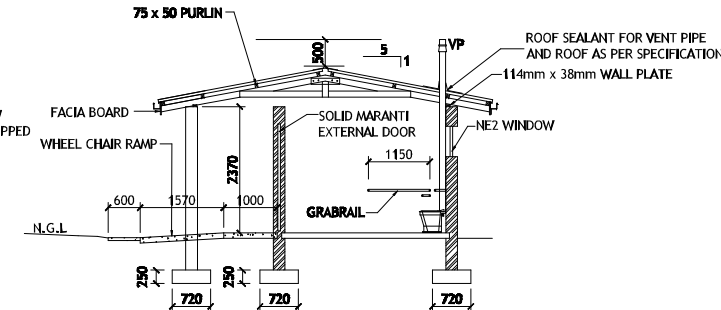
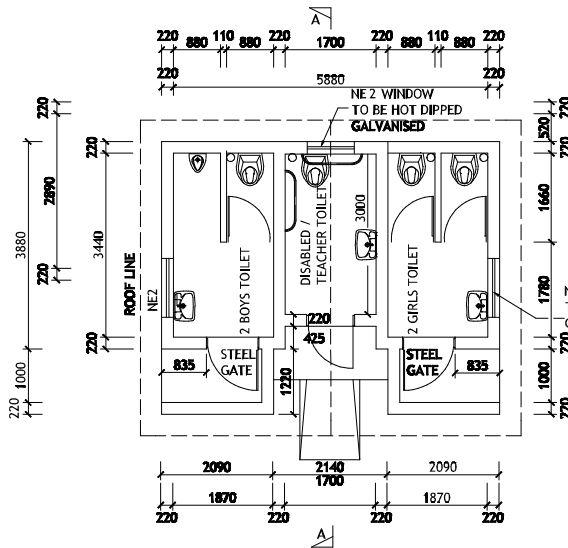
REAR ELEVATION



NORTH ELEVATION



FRONT ELEVATION



| ITEM | DESCRIPTION | QUANTITY | UNIT | REMARKS |
|------|--|----------|------|---------|
| 100 | 140H OVER 94-FLT COMPOSITE | 1 | 1 | |
| 101 | W1 NO REQ - STANDARD STEEL SCHOOL RESIDENTIAL SECTION BOTTOM HUNG OPEN IN SABS APPROVED 4mm CLEAR FLOAT GLASS WITH STEEL WINDOW PUTTY STANDARD BRASS FITTINGS FACTORY FITTED GALVANISED NO PAINTING REQUIRED HEAVY STEEL SECTION | 1 | 1 | |
| 102 | W2 NO REQ - STANDARD STEEL SCHOOL RESIDENTIAL SECTION BOTTOM HUNG OPEN IN SABS APPROVED 4mm CLEAR FLOAT GLASS WITH STEEL WINDOW PUTTY STANDARD BRASS FITTINGS FACTORY FITTED GALVANISED NO PAINTING REQUIRED HEAVY STEEL SECTION | 1 | 1 | |
| 103 | W3 NO REQ - STANDARD STEEL SCHOOL RESIDENTIAL SECTION BOTTOM HUNG OPEN IN SABS APPROVED 4mm CLEAR FLOAT GLASS WITH STEEL WINDOW PUTTY STANDARD BRASS FITTINGS FACTORY FITTED GALVANISED NO PAINTING REQUIRED HEAVY STEEL SECTION | 1 | 1 | |
| 104 | SCALE 1:1000 (MINOR DETAILS) | | | |

| ITEM | DESCRIPTION | QUANTITY | UNIT | REMARKS |
|------|--|----------|------|---------|
| 105 | D01 NO REQ - 2 - WITH SECURITY GATE 2032 x 813 x 44mm SLUGGIA "BLACO" LEDGED AND BRACED BATTENED DOOR WITH 40 x 115mm STILES AND TOP RAIL 20 x 150mm MIDDLE LEDGE 20 x 225mm BOTTOM LEDGE AND 20 x 115mm BRACKES PRIMED, UNDERCOAT AND TWO COATS GLOSS ENAMEL STANDARD 12mm DOUBLE REBATED GALVANISED PRESSED METAL FRAME FOR 115mm WALL COMPLETE WITH STRAPS FOR BUILDING IN 24100mm GALVANISED AND WELDED LOOSE PIN HINGES ADJUST CHROME PLATED STRIKING PLATE GALVANISED NO PAINTING REQUIRED | 1 | 1 | |
| 106 | D02 NO REQ - 2 - WITH SECURITY GATE 2032 x 813 x 44mm SOLID CORE HARDWOOD PANEL DOOR WITH COMMERCIAL VENER PRIMER, UNDERCOAT AND TWO COATS GLOSS ENAMEL STANDARD 12mm DOUBLE REBATED GALVANISED PRESSED METAL FRAME FOR 115mm WALL COMPLETE WITH STRAPS FOR BUILDING IN 24100mm GALVANISED AND WELDED LOOSE PIN HINGES ADJUST CHROME PLATED STRIKING PLATE GALVANISED NO PAINTING REQUIRED | 1 | 1 | |
| 107 | SOLID ART 380/13 4 LEVER MORTICE LOCKSET AND SATIN CHROME PLATED HANDLES 38mm DIAMETER DOOR STOP PLUGGED AND SCREWED TO FLOOR WITH A 50mm LONG BRASS SCREW GALVANISED SECURITY GATE AS PER DETAILS | 1 | 1 | |
| 108 | SCALE 1:100 (MAJOR DETAILS) | | | |

GUTTERS & DOWNPIPES : SEAMLESS ALUMINIUM OGEE GUTTERS WITH BAKED ENAMEL FINISH AND FIXED TO SUPPLIERS SPECIFICATIONS , WITH 100 x 75mm FLUTTED ALUMINIUM DOWNPIPES WITH BAKED ENAMEL FINISH AND FIXED TO SUPPLIERS SPECIFICATION

VERANDA WALKWAY : 100mm THICK CONCRETE SLAB (20 MPA) REINFORCED WITH MESH REF : 153 SET 25mm ABOVE 250 MICRON GUNPLAS USB GREEN DPC ON 50mm TREATED AND RAMMED RIVER SAND ON FILL COMPACTED TO 95% MOD AASHTO SLAB LAID WITH 25mm FALL AWAY FROM WALL AND CAST IN ALTERNATE PANELS OF CONTROL JOINTS SEALED WITH 10mm POLYSULPHIDE SEALANT WITH BACKING BACKING STRIP AND SFTINBOARD

CONCRETE APRONS : 75mm THICK 20 MPA CONCRETE APRONS LAID TO A FALL OF 1:200 TO RELIEF POINTS , CAST ALTERNATE PANELS WITH A CONTROL JOINTS EVERY 2000mm ON FILL COMPACTED TO MOD AASHTO 95% , CONTROL JOINTS TO BE SEALED WITH 10mm POLYSULPHIDE

WINDOW CILLS : EXTERNAL CILLS TO BE ROLLER COURSE FBA FACE BRICK SET AT AN ANGLE OF 15 DEGREES , 375 MICRON EMBOSSED DAMP PROOF MEMBRANE BELOW ALL CILLS INTERNAL CILLS TO BE EVERITE NUTEC FIBRE CEMENT PRODUCT NO.031-509 COMPLETE WITH FIXING LUGS AND SELF TAPPING SCREWS

CHALKBOARD : 4800 X 1140mm GREEN CHALKBOARD TO COMPLY WITH CKS 361980 SUPPLIED COMPLETE WITH CHALK RAIL AS ONE UNIT , CHALKBOARD TO BE FIXED AS PER MANUFACTURERS INSTRUCTIONS

GENERAL SPECIFICATION NOTES

FRANKE LUXTRUP DROP - ON STAINLESS STEEL WASH TROUGH , 1 MODEL LDL , 600 x 500 x 258mm DEEP ON 1 PAIR FALCON WALL BRACKETS , WITH CORBA C 2 WASTE , CODE : 310 AND 1 CORBA C 2 STAR BIB TAP

SANITARY SCHEDULE

GENERAL SPECIFICATION NOTES TO BE READ WITH STANDARD TRADE PREAMBLES VBI 20 TRADE NAMES AS SPECIFIED OR EQUAL APPROVED

FOUNDATIONS : 600 x 200mm 20 MPA CONCRETE STRIP FOOTING TO SET ON NATURAL GROUND WITH A MINIMUM COVER OF 400mm , FOUNDATIONS TO BE APPROVED BY ENGINEER , CONTROL JOINTS AT EVERY SECOND CLASSROOM OR AT EVERY 12000mm AS PER FOUNDATION DRAWING

WALLS : ALL WALLS TO COMPLY WITH THE NATIONAL BUILDING REGULATIONS COROBRIK FBA FACE BRICK WALLS IN STRETCHER BOND WITH RULED JOINTS AND PERPENDS INTERNALLY AND EXTERNALLY COROBRIK NFP TO BE USED FOR PLASTERED WALLS , COROBRIK ENGINEERING BRICKS TO BE USED IN PLINTH WALLS BELOW DPC LEVEL BRICKFORCE TO ALL COUSES FROM WINDOW HEAD TO UNDERSIDE OF WALL PLATE GALVANISED CRIMP WIRE TIE TO BE LAID STAGGERED (7 PER SQUARE METER) EXTERNAL FACE OF INTERNAL SKIN OF 230mm WALLS TO BE BAG WASHED AND PAINTED WITH BITUMEN BEAM FILLING TO UNDERSIDE OF ROOF SHEETS EXPANSION JOINTS AS INDICATED ON PLAN TO BE FORMED WITH A CONTINUOUS STRIP OF 12mm BITUMEN IMPREGNATED SOFTBOARD BETWEEN 230mm BRICK WALLS , TO BE SEALED INTERNALLY AND EXTERNALLY WITH 10mm DEEP POLYSULPHIDE SEALANT

AIR-BRICKS : 229 x 152mm TERRA-COTTA VERMIN PROOFED AIR-BRICKS AS INDICATED ON GABLE ELEVATIONS

PLASTER : INTERNAL PLASTER TO BE 13 to 16mm THICK, CEMENT SAND RATIO OF 1:5, PLASTER SEALED 1 UNDERCOAT , 2 COATS WALL N ALL EMULSION PAINT , COLOUR TO BE APPROVED

FLOORS : 100mm THICK POWER FLOATED CONCRETE SLAB (20MPA) REINFORCED WITH MESH REF : 153, SET 25MM ABOVE 250 MICRON GUNPLAS USB GREEN DPC ON 50mm TREATED AND RAMMED RIVER SAND ON CLEAR BATHY FILL IN LAYERS NOT EXCEEDING 150mm, TO BE WELL WATERED AND COMPACTED TO 90% MOD AASHTO , SOIL TO BE POISONED IN ACCORDANCE WITH SABS 1165, CERTIFICATE MUST BE PROVIDED

GENERAL SPECIFICATION NOTES

NOTE

ALL OVER HANGS TO BE MIN OF 450mm ON THE FRONT AND REAR FACADES AND ALL SIDE OVERHANGS TO BE MIN 300mm

ENDORCEMENTS

All dimensions to be checked on site, any discrepancies to be reported to the Architect. Figured dimensions are to be used at all times & drawings are not to be scaled at any time. All structural elements are to the engineer's design & detailing

| REVISION | DESCRIPTION | DATE |
|----------|-------------|------|
| | | |
| | | |
| | | |

LEGEND

CLIENT'S NAME: DBSA

CLIENT'S SIGNATURE: _____

CONSULTING ENGINEERS: YEMSA

AGENT'S SIGNATURE: _____

NZUZO M ARCHITECTURE & PROJECT MANAGEMENT

SUSTAINABLE DESIGN SOLUTION

Pc No. : PSAT20636 Nzuzo Mhembu SUITE 9 92 CHROMPTON STREET PINETOWN 3600

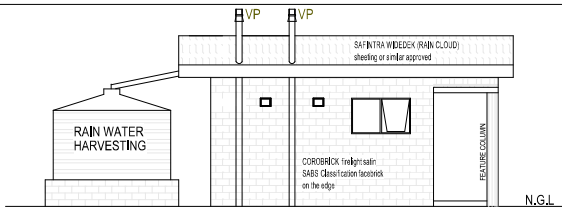
POSTAL ADDRESS P.O BOX 205 PINETOWN 3600

(w) 031 701 9682 (t) 086 607 2851

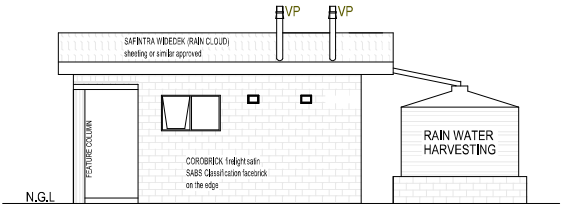
AUTHOR'S SIGNATURE _____

PROPOSED ASBESTOS REPLACEMENT AT CEKAZI PRIMARY SCHOOL

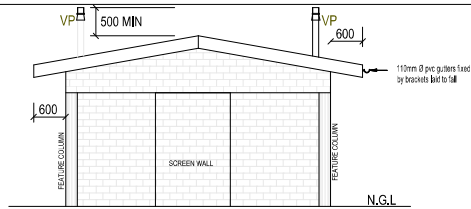
| DRAWING NAME: SITE DEVELOPMENT PLAN | | | |
|-------------------------------------|-------------------------|-------------|--------------------|
| DRAWN BY: N. P. M. | CHECKED BY: NN MTHIMBU | REVISION: 0 | DATE: 07 - 10 - 22 |
| SHEET NUMBER: AS SHOWN | DRAWING NUMBER: CFK-100 | REVISION: 0 | DATE: 07 - 10 - 22 |



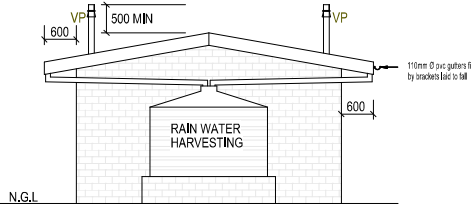
FRONT ELEVATION



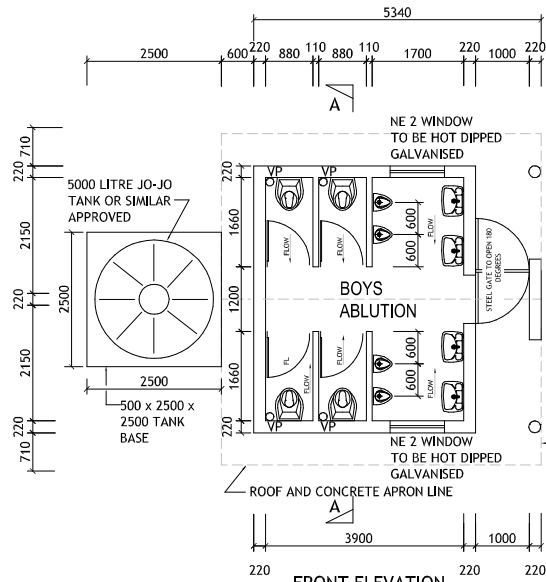
REAR ELEVATION



SOUTH ELEVATION

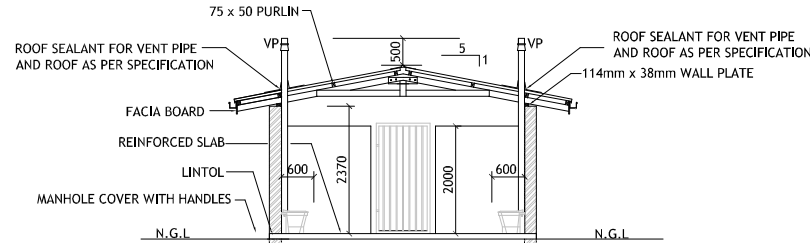


NORTH ELEVATION



FRONT ELEVATION

LAYOUT PLAN



SECTION A - A

IN-SITU MATERIA

ROOF AND CONCRETE APRON LINE

PIPES FROM GUTTERS TO FILL TANK (75mm uPVC)
PIPE FROM TANK TO SINKS (12mm POLYCOPI)

| ITEM | DESCRIPTION | ITEM | DESCRIPTION | ITEM | DESCRIPTION |
|--|-------------|--|-------------|--|-------------|
| 148H OVER 9-F.A.T COMPOSITE | | 148H OVER 9-F.A.T COMPOSITE | | 148H OVER 9-F.A.T COMPOSITE | |
| W1 NO REQD : STANDARD STEEL SCHOOL RESIDENTIAL SECTION BOTTOM HUNG OPEN IN SABS APPROVED | | W2 NO REQD : STANDARD STEEL SCHOOL RESIDENTIAL SECTION BOTTOM HUNG OPEN IN SABS APPROVED | | W3 NO REQD : STANDARD STEEL SCHOOL RESIDENTIAL SECTION BOTTOM HUNG OPEN IN SABS APPROVED | |
| 4mm CLEAR FLOAT GLASS WITH STEEL WINDOW PUTTY | | 4mm CLEAR FLOAT GLASS WITH STEEL WINDOW PUTTY | | 4mm CLEAR FLOAT GLASS WITH STEEL WINDOW PUTTY | |
| STANDARD BRASS FITTINGS | | STANDARD BRASS FITTINGS | | STANDARD BRASS FITTINGS | |
| FACTORY FITTED GALVANISED NO PAINTING REQUIRED | | FACTORY FITTED GALVANISED NO PAINTING REQUIRED | | FACTORY FITTED GALVANISED NO PAINTING REQUIRED | |
| HEAVY STEEL SECTION | | HEAVY STEEL SECTION | | HEAVY STEEL SECTION | |
| SCALE : 1:100 | | SCALE : 1:100 | | SCALE : 1:100 | |

| ITEM | DESCRIPTION | ITEM | DESCRIPTION | ITEM | DESCRIPTION |
|--|-------------|--|-------------|--|-------------|
| D01 NO REQD : - WITH SECURITY GATE | | D02 NO REQD : 2 - WITH SECURITY GATE | | D03 NO REQD : 2 - WITH SECURITY GATE | |
| 2032 x 813 x 44mm SULLIGNA 'BLACO' LEDGED AND BRACED BATTENED DOOR WITH 40 x 110mm STYLES AND TOP RAIL , 20 x 150mm MIDDLE LEDGE , 20 x 225mm BOTTOM LEDGE AND - 20 x 110mm BRACES | | 2032 x 813 x 44mm SOLID CORE HARDWOOD PANEL DOOR WITH COMMERCIAL VENEER | | 2032 x 813 x 44mm SOLID CORE HARDWOOD PANEL DOOR WITH COMMERCIAL VENEER | |
| PRIMED , UNDERCOAT AND TWO COATS GLOSS ENAMEL | | PRIMED , UNDERCOAT AND TWO COATS GLOSS ENAMEL | | PRIMED , UNDERCOAT AND TWO COATS GLOSS ENAMEL | |
| STANDARD 12mm DOUBLE REBATED GALVANISED PRESSED METAL FRAME FOR 115mm WALL COMPLETE WITH STRAPS FOR BUILDING IN 2x100mm GALVANISED AND WELDED LOOSE PIN HINGES , ADJUST , CHROME PLATED STRIKING PLATE | | STANDARD 12mm DOUBLE REBATED GALVANISED PRESSED METAL FRAME FOR 115mm WALL COMPLETE WITH STRAPS FOR BUILDING IN 2x100mm GALVANISED AND WELDED LOOSE PIN HINGES , ADJUST , CHROME PLATED STRIKING PLATE | | STANDARD 12mm DOUBLE REBATED GALVANISED PRESSED METAL FRAME FOR 115mm WALL COMPLETE WITH STRAPS FOR BUILDING IN 2x100mm GALVANISED AND WELDED LOOSE PIN HINGES , ADJUST , CHROME PLATED STRIKING PLATE | |
| GALVANISED NO PAINTING REQUIRED | | GALVANISED NO PAINTING REQUIRED | | GALVANISED NO PAINTING REQUIRED | |
| SOLID ART 390/13 4 LEVER MORTICE LOCKSET AND SATIN CHROME PLATED HANDLES , 38mm DIAMETER DOOR STOP PLUGGED AND SCREWED TO FLOOR WITH A 500mm LONG BRASS SCREW | | SOLID ART 390/13 4 LEVER MORTICE LOCKSET AND SATIN CHROME PLATED HANDLES , 38mm DIAMETER DOOR STOP PLUGGED AND SCREWED TO FLOOR WITH A 500mm LONG BRASS SCREW | | SOLID ART 390/13 4 LEVER MORTICE LOCKSET AND SATIN CHROME PLATED HANDLES , 38mm DIAMETER DOOR STOP PLUGGED AND SCREWED TO FLOOR WITH A 500mm LONG BRASS SCREW | |
| GALVANISED SECURITY GATE AS PER DETAILS | | GALVANISED SECURITY GATE AS PER DETAILS | | GALVANISED SECURITY GATE AS PER DETAILS | |
| SCALE : 1:100 | | SCALE : 1:100 | | SCALE : 1:100 | |

GUTTERS & DOWNPIPES : SEAMLESS ALUMINIUM OGEE GUTTERS WITH BAKED ENAMEL FINISH AND FIXED TO SUPPLIERS SPECIFICATIONS , WITH 100 x 75mm FLUTTED ALUMINIUM DOWNPIPES WITH BAKED ENAMEL FINISH AND FIXED TO SUPPLIERS SPECIFICATION

VERANDA WALKWAY : 100mm THICK CONCRETE SLAB (20 MPA) REINFORCED WITH MESH - REF : 153 SET 25mm ABOVE 250 MICRON GUNPLAS USB GREEN DPC ON 50mm TREATED AND RAMMED RIVER SAND ON FILL COMPACTED TO 95% MOD AASHTO , SLAB LAID WITH 25mm FALL AWAY FROM WALL AND CAST IN ALTERNATE PANELS OF CONTROL JOINTS SEALED WITH 10mm POLYSULPHIDE SEALANT WITH BACKING BACKING STRIP AND SOFTBOARD

WINDOW CHILLS : EXTERNAL CHILLS TO BE ROLLER COURSE FBA FACE BRICK SET AT AN ANGLE OF 15 DEGREES , 175 MICRON EMBOSSED DAMP PROOF MEMBRANE BELOW ALL CHILLS INTERNAL CHILLS TO BE EVERITE NUTEC FIBRE CEMENT PRODUCT NO 031-5091 COMPLETE WITH FIXING LUGS AND SELF TAPPING SCREWS

CHALKBOARD : 4800 X 1140mm GREEN CHALKBOARD TO COMPLY WITH CKS 361980 SUPPLIED COMPLETE WITH CHALK RAIL AS ONE UNIT - CHALKBOARD TO BE FIXED AS PER MANUFACTURERS INSTRUCTIONS

GENERAL SPECIFICATION NOTES

FRANK LUTTUS DROP - ON STAINLESS STEEL WASH TROUGH MODEL LXL 600 x 500 x 258mm DEEP ON 1 PAIR FALCON WALL BRACKETS , WITH CORBA C 2 WASTE , CODE : 310 AND 1 CORBA C 2 258mm TAP

SANITARY SCHEDULE

GENERAL SPECIFICATION NOTES TO BE READ WITH STANDARD TRADE PREAMBLES VBI 20 TRADE NAMES AS SPECIFIED OR EQUAL APPROVED

FOUNDATIONS : 600 x 200mm 20 MPA CONCRETE STRIP FOOTING TO SET ON NATURAL GROUND WITH A MINIMUM COVER OF 400mm. FOUNDATIONS TO BE APPROVED BY ENGINEER . CONTROL JOINTS AT EVERY SECOND CLASSROOM OR AT EVERY 12000mm AS PER FOUNDATION DRAWING

WALLS : ALL WALLS TO COMPLY WITH THE NATIONAL BUILDING REGULATIONS COROBRIK FBA FACE BRICK WALLS IN STRETCHER BOND WITH RULED JOINTS AND PERPENDS INTERNALLY AND EXTERNALLY COROBRIK NPT TO BE USED FOR PLASTERED WALLS , COROBRIK ENGINEERING BRICKS TO BE USED IN PLINTH WALLS BELOW DPC LEVEL BRICKFORCE TO ALL COUSERS FROM WINDOW HEAD TO UNDERSIDE OF WALLPLATE GALVANISED CRIMP WIRE TIE TO BE LAID STAGGERED (7 PER SQUARE METER) EXTERNAL FACE OF INTERNAL SKIN OF 230mm WALLS TO BE BAG WASHED AND PAINTED WITH BITUMEN BEAM FILLING TO UNDERSIDE OF ROOF SHEETS EXPANSION JOINTS AS INDICATED ON PLAN TO BE FORMED WITH A CONTINUOUS STRIP OF 12mm BITUMEN IMPREGATED SOFTBOARD BETWEEN 230mm BRICK WALLS , TO BE SEALED INTERNALLY AND EXTERNALLY WITH 10mm DEEP POLYSULPHIDE SEALANT

AIR-BRICKS : 225 x 152mm TERRA-COTTA VERMIN PROOFED AIR-BRICKS AS INDICATED ON GABLE ELEVATIONS

PLASTER : INTERNAL PLASTER TO BE 13 to 16mm THICK, CEMENT SAND RATIO OF 1:5, PLASTER SEALED 1 UNDERCOAT , 2 COATS WALL 4 FULL EMULSION PAINT , COLOUR TO BE APPROVED

FLOORS : 100mm THICK POWER FLOATED CONCRETE SLAB (20MPA) REINFORCED WITH MESH - REF : 153 SET 25mm ABOVE 250 MICRON GUNPLAS USB GREEN DPC ON 50mm TREATED AND RAMMED RIVER SAND ON CLEAN BATHY FILL IN LAYERS NOT EXCEEDING 150mm, TO BE WELL WATERED AND COMPACTED TO 90% MOD AASHTO - SOIL TO BE POISONED IN ACCORDANCE WITH SABS 1165, CERTIFICATE MUST BE PROVIDED

GENERAL SPECIFICATION NOTES

NOTE

ALL OVER HANGS TO BE MIN OF 450mm ON THE FRONT AND REAR FACADES AND ALL SIDE OVERHANGS TO BE MIN 300mm

ENDORCEMENTS

All dimensions to be checked on site, any discrepancies to be reported to the Architect.
Figured dimensions are to be used at all times & drawings are not to be scaled at any time.
All structural elements are to the engineer's design & detailing

| REVISION | DESCRIPTION | DATE |
|----------|-------------|------|
| | | |
| | | |
| | | |

LEGEND



CLIENT'S SIGNATURE

CONSULTING ENGINEERS: NYMESA



AGENT'S SIGNATURE



SUSTAINABLE DESIGN SOLUTION

Pj. No. : PSAT20636
Nzuzo Mhembu
SUITE 9
92 CHROMPTON STREET
PINETOWN
3600

POSTAL ADDRESS
P.O BOX 205
PINETOWN
3600
(w) 031 701 9682
(c) 073 453 1672
(f) 086 607 2851
AUTHOR'S SIGNATURE

PROJECT TITLE:

PROPOSED ASBESTOS REPLACEMENT AT CEKAZI PRIMARY SCHOOL

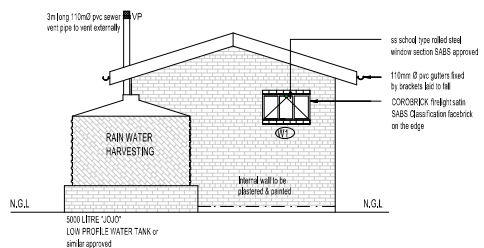
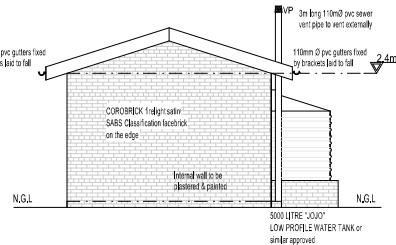
DRAWING NAME:

SITE DEVELOPMENT PLAN

DRAWN BY: N. P. M. CHECKED BY: NN MTHIMBU

SHEET NUMBER: DRAWING NUMBER: CFK-100 REVISION: 0

SCALE: AS SHOWN DATE: 07 - 10 - 22



| | 37.813.32 | 37.813.32 |
|-------|--|--|
| | SLAB LEVEL | SLAB LEVEL |
| 00000 | D01 DOOR 2.000' - WITH SECURITY GATE | D02 DOOR 2.000' - WITH SECURITY GATE |
| 00000 | 2032 x 813 x 44mm SILVER "MILCO" LEDGED AND BRACED BATTENED DOOR WITH 40 x 110mm STAYS AND TOP RAIL, 20 x 150mm MIDRAIL, 20 x 225mm BOTTOM LEDGE ANL, 20 x 110mm BRACES PRIMED, UNDERCOAT AND TWO COATS GLOSS ENAMEL | 2032 x 813 x 44mm SOLID CORE HARDWOOD PANEL DOOR WITH COMMERCIAL HINGER |
| 00000 | STANDARD 1.2mm DOUBLE REBATED STAINLESS STEEL METAL FRAME FOR BUILDING IN, 2x100mm GALVANISED AND WELDED LOOSE PIN HINGES - ADJUST- CHROME PLATE STRIKING PLATE | STANDARD 1.2mm DOUBLE REBATED METAL FRAME FOR BUILDING IN, 2x100mm CORTESSA STAYS FOR BUILDING IN, 2x100mm GALVANISED AND WELDED LOOSE PIN HINGES - ADJUST- CHROME PLATE STRIKING PLATE |
| 00000 | GALVANISED NO PAINTING REQUIRED | GALVANISED NO PAINTING REQUIRED |
| 00000 | SOLID SET 390X131.4 LIVER MORTICE LOCKER AND SATIN BRASS CHROME PLATE HANDLES - 38mm DIAMETER DOOR STOP PLUGGER AND SCREWED TO FLOOR WITH 50mm LONG BRASS SCREW | SOLID SET 390X131.4 LIVER MORTICE LOCKER AND SATIN CHROME PLATE HANDLES - 38mm DIAMETER DOOR STOP PLUGGER AND SCREWED TO FLOOR WITH 50mm LONG BRASS SCREW |
| 00000 | GALVANISED SECURITY GATE ASP PER DETAIL | NIL |

GENERAL SPECIFICATION NOTES

ALL OVER HANGS TO BE MIN OF 450mm ON THE FRONT AND REAR
FACADES AND ALL SIDE OVERHANGS TO BE MIN 300mm

GENERAL SPECIFICATION NOTES TO BE READ
WITH STANDARD TRADE PREAMBLES WB 20
TRADE NAMES AS SPECIFIED OR EQUAL APPROVED

FOUNDATIONS:
600 x 200mm x 200mm MRA CONCRETE STRIP FOOTING
TO SIT ON NATURAL GROUND WITH A MINIMUM
COVER OF 400mm, FOUNDATIONS TO BE APPROVED
BY THE ARCHITECT.

CONTROL JOINTS AT EVERY SECOND CLASSROOM
OR AT EVERY 12000mm AS PER FOUNDATION
DRAWING.

WALLS:
ALL BUILDING TO COMPLY WITH THE NATIONAL
BUILDING REGULATIONS 4
CORROBORATED IRON SHEET WALLS IN STRETCHER
BOND WITH RULED JOINTS AND PENDS
INTERNALLY AND EXTERNALLY 4
CORROBORATED IRON SHEET WALLS TO BE LAID
STAGGERED (7 PER SQUARE METER 4
EXTERNAL FACE OF INTERNAL SKIN OF 230mm
WALLS TO BE JOINED WASHED AND PAINTED WITH
BITUMEN 4
INTERNAL FINISH OF INTERIOR OF ROOF SHEETS
EXPANSION JOINTS AS INDICATED ON PLAN TO
BE FORMED WITH A CONTINUOUS STRIP OF 12mm
BITUMEN IMPREGATED FIBREGLASS REINFORCED
230mm BRICK WALLS, TO BE SEALED DURING
CONSTRUCTION EXTERNALLY WITH 10mm DEEP POLYSULPHIDE
SEALANT

AIR-BRICKS:
220 x 125mm TERRA-COTTA VERMIN PROOFED
AIR-BRICKS AS INDICATED ON GABLE ELEVATIONS

PLASTER:
INTERNAL PLASTER TO BE 13mm 16mm THICK,
CEMENT SAND RATIO OF 1:5, PLASTERED
UNDERCOAT, 2 COATS 'WALL N' ALL
EMULSION PAINT, 'COLOUR TO BE APPROVED

FLOORS:
100mm THICK POWER FLOATED CONCRETE SLAB
25MPA REINFORCED WITH MESH - R# 193
SET 25MM ABOVE 250 MICRON GUNFIRUS UVS
GREEN COLOURED POLYESTER FIBREGLASS
RIVER SAND ON CLEAN EARTH FILL IN WALLS
NOT EXCEEDING 150mm, TO BE LAYED
UNDER COMPACTED 150mm DEEP FILL SOIL TO
BE POISONED IN ACCORDANCE WITH SABS 1165,
CERTIFICATE MUST BE PROVIDED

GENERAL SPECIFICATION NOTES

| | | | |
|----------------------|--|----------------------------|--|
| DRAWN BY: N. P. M | | CHECKED BY: NN MTHEMBU | |
| SHEET NUMBER: | | DRAWING NUMBER: CEK-100 | |
| | | REVISION 0 | |
| SCALE: AS SHOWN | | DATE: 07 - 10 - 22 | |