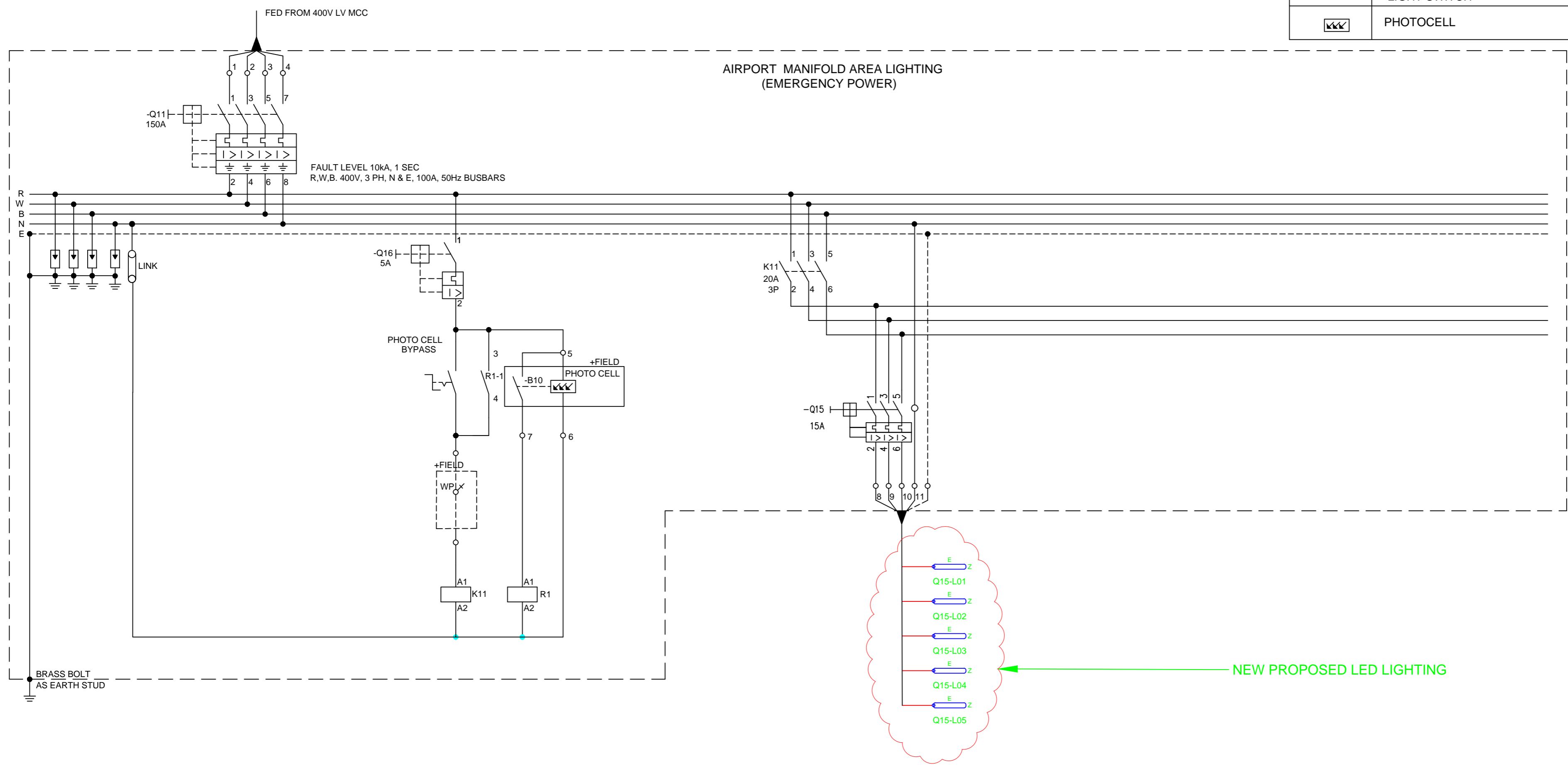


SYMBOL	DESCRIPTION	QTY	MAKE
	SUITABLE ZONE 2 EX LED LUMINAIRE	5	TBC
	SINGLE LEVER ONE WAY IP65 LIGHT SWITCH	0	
	PHOTOCELL	0	



- Q15-L01
- Q15-L02
- Q15-L03
- Q15-L04
- Q15-L05

NEW PROPOSED LED LIGHTING

TYPE/SIZE OF C.B.	3 POLE 63A	1 POLE 10A	3 POLE 20A
CABLE SIZE		4C x 2.5mm <sup>2</sup>	4C x 2.5mm <sup>2</sup>
GENERAL AREA	MAIN SWITCH	PHOTOCELL/BYPASS	MANIFOLD LIGHTS CIRCUIT 1

REVISIONS			
PROJECT NAME			
LIGHTING UPGRADE			
DRAWN	WD	REF.	
TRACED	CAD	DATE	22.11.2021
CHECKED	KN	APPROVED	Z.M
SCALE	NTS		
DRAWING No.	PL 121787		REV



AIRPORT PUMPSTATION  
MANIFOLD LIGHTING—SCHEMATIC DIAGRAM

PROPOSAL