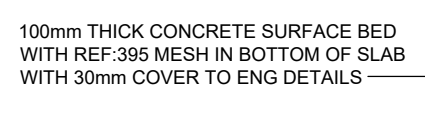


SCALE 1:50

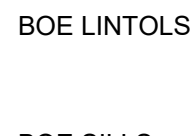
PROFILE ROOF SHEETING @ 12" ON SISALATION
@ 750 mm C/Cs ON PREFABRICATED TIMBER
AND SPECIFICATION _____

GLAZING

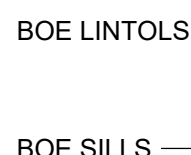
1. 6.28mm obscure safety glass



SCALE 1:50



SCALE 1:50



SCALE 1:50



SCALE 1:50



SCALE 1:50

WINDOW NO.	N2
CATALOGUE	NE7
FRAME	1022 x 654mm HIGH STANDARD STEEL WINDOW FRAME
FRAME FINISH	SPOT PRIMING DEFECTS IN PRE-PRIME SURFACE WITH ZINC CHROMATE PRIMER & APPLY ONE UNIVERSAL UNDER COAT & TWO COATS EPWP GOLDEN BROWN GLOSS ENAMEL PAINT ON STEEL
GLAZING	6.28mm OBSCURE SAFETY GLASS
NO. REQUIRED	4

WINDOW NO.	N1
CATALOGUE	NE1
FRAME	633 x 654mm HIGH STANDARD STEEL WINDOW FRAME
FRAME FINISH	SPOT PRINING DEFECTS IN PRE-PRIME SURFACE WITH ZINC CHROMATE PRIMER & APPLY ONE UNDERPRIME UNDER COAT & TWO COATS EPWP GOLDEN BROWN GLOSS ENAMEL PAINT ON STEEL
GLAZING	6.28mm OBSCURE SAFETY GLASS
NO. REQUIRED	8

FRAME TYPE	SINGLE REBATE STEEL FRAME TO FIT 220mm WALL (D1)
FRAME FINISH	PRIME AND PAINT UNDERCOAT AND 2no FINISHING COATS IN GLOSS ENAMEL COLOUR TBC
DOOR LEAF	44mm FRAMED LEDGED AND BRACED DOOR SIZE 813x2052mm INCLUDING EXTERNAL WEATHER BAR
LEAF FINISH	UNDER COAT AND MINIMUM 2 COATS GLOSS ENAMEL - COLOUR TBC
LOCK	3 LEVER MORTICE LOCK SET
IRONMONGERY	100mm BRACE CABIN HOOK

FRAME TYPE	SINGLE REBATE STEEL DOOR FRAME : SIZE 83x5mm (FRAME UNDERCUT TO 150mm)
FRAME FINISH	PRIME AND PAINT UNDERCOAT AND 2 COATS- GLOSS ENAMEL - COLOUR TBC
DOOR LEAF	44mm FRAMED LEDGED EMBRACED DOOR SIZE 813x2020mm (DOOR RAISE BY 150mm TO TOP OF FRAME
LEAF FINISH	UNDER COAT AND MINIMUM 2 COATS GLOSS ENAMEL - COLOUR TBC
LOCK	TOILET INDICATOR LOCK
IRONMONGERY	100mm CHROME PLATED "D" TYPE HANDLE 3 BY SOLID BRACE HINGES

DRG. No.	REFERENCE DRAWING
----------	-------------------



Consultant:


SKY HIGH
consulting engineers

SKY HIGH CONSULTING ENGINEERS C.C.


Head Office
Khurula Park
No 14 Peace Street
P. O. Box 2816
Tzaneen
0850;

Tel: +27 (0)15 307 6961
Fax: +27 (0)86 540 1430
Email:
info@shsconsulting.co.za

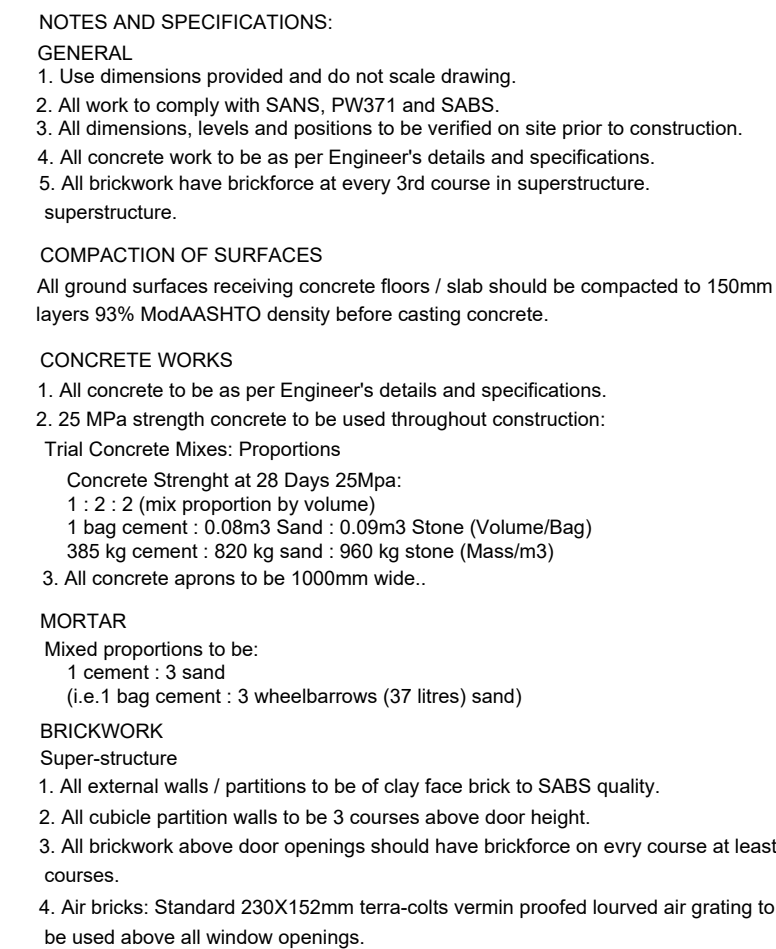
COPYRIGHT AND USE OF THIS DRAWING IS RESERVED	
Designed:	Drawn
Checked:	Civil Engineer
Structural Engineer	Mechanical Engineer
Electrical Engineer	Co-ordination Engineer
Approved :	
_____ Project manager	_____ Director

Contract Number & Project Description :
<p>Contract Number: TMT-LPDE-2019/20-LPCL8-01</p> <p>CONSTRUCTION OF WATER & SANITATION INFRASTRUCTURE AT RAMUSHASHA JUNIOR PRIMARY SCHOOL IN LIMPOPO</p>

Drawing Description :
STUFF MALE AND FEMALE TOILETS:
PLAN, SECTION AND ELEVATIONS

Scale :	DATE SEP 2022	
Consultant Project Number : SHCE - 066 Drawing Number : TMT-MT-SD5	A1	Revision : 

TENDER



0.6 mm KLIPLOK CHROMADEK PROFILE ROOF SHEETING @ 12° ON SIALATION
ON 76 x 50 mm S.A. PINE PURLINS @ 750 mm C/Cs ON PREFABRICATED TIMBER
TRUSSES TO ENGINEER'S DETAIL AND SPECIFICATION

114 x 38 mm S.A. PINE
RAFTER AT 900 mm C/C

0.6 mm KLIPLOK CHROMADEK
PURLINS AT 900mm C/C

NUTEC FASCIA BOARD

610

12°

350

3450 BOTTOM OF WALL PLATE

2465 BOTTOM OF WALL PLATE

2125 BOTTOM OF
WINDOW LINTEL

3 COURSES
ABOVE DOOR
HEIGHT

2272

FALL

0 FFL

NGL

595

-595

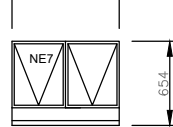
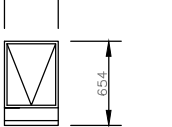
100mm THICK CONCRETE SURFACE BED
WITH REF-395 MESH IN BOTTOM OF SLAB
WITH 30mm COVER TO ENG DETAILS

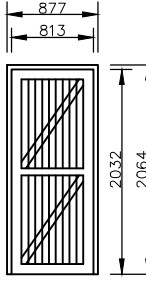
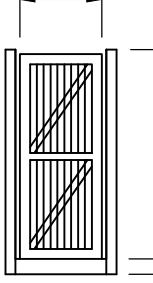
100mm WIDE APRON WITH EXPANSION
JOINTS AT EVERY 1500mm INTERVALS

600 x 300 mm CONCRETE STRIP
FOUNDATION TO ENG DETAILS

WELL COMPACTED BACK
FILL @ MAX 150mm LAYERS


SECTION A-A
SCALE 1:50

WINDOW SCHEDULE		WINDOW SCHEDULE	
			
WINDOW NO.	N2	WINDOW NO.	N1
CATALOGUE	NET	CATALOGUE	NET
FRAME	102 x 60mm HIGH STANDARD STEEL WINDOW FRAME	FRAME	101 x 60mm HIGH STANDARD STEEL WINDOW FRAME
FRAME FINISH	SPOT PRINING DEFECTS IN PRE-PRIME SURFACE WITH CINK CHROMATE. PRIMER & APPLY 1 COAT UNIVERSAL UNDER COAT & TWO COATS EPIFF GOLDEN BROWN GLOSS ENAMEL PAINT ON STEEL	FRAME FINISH	SPOT PRINING DEFECTS IN PRE-PRIME SURFACE WITH CINK CHROMATE. PRIMER & APPLY 1 COAT UNIVERSAL UNDER COAT & TWO COATS EPIFF GOLDEN BROWN GLOSS ENAMEL PAINT ON STEEL
GLAZING	6.39mm OBSCURE SAFETY GLASS	GLAZING	6.39mm OBSCURE SAFETY GLASS
NO. REQUIRED	8	NO. REQUIRED	15

ENTRANCE DOOR (4 No. OFF)		CUBICLE DOOR (8 No. OFF)	
			
FRAME TYPE	SINGLE REBATE STEEL FRAME TO FIT 20mm RAIL DTI	FRAME TYPE	SINGLE REBATE STEEL DOOR FRAME - SIZE 80mm x FRAME UNDERCUT TO 150mm
FRAME FINISH	PRIME AND PAINT UNDERCOAT AND 3 COATS FINISHING COAT IN GLOSS ENAMEL, COLOUR TBC	FRAME FINISH	PRIME AND PAINT UNDERCOAT AND 2 COATS GLOSS ENAMEL - COLOUR TBC
DOOR LEAF	44mm FRAMED EDGED AND BRACED DOOR SIZE 813x2052mm INCLUDING EXTERNAL WEATHER SEALS	DOOR LEAF	44mm FRAMED EDGED FINISHED DOOR SIZE 813x1952mm DOOR RAILE BY 150mm TO TOP OF FRAME
LEAF FINISH	UNDER COAT AND MINIMUM 2 COATS GLOSS ENAMEL - COLOUR TBC	LEAF FINISH	UNDER COAT AND MINIMUM 2 COATS GLOSS ENAMEL - COLOUR TBC
LOCK	3 LEVER MORTICE LOCK SET	LOCK	TOILET INDICATOR LOCK
IRONMONGERY	100mm FRAME CABIN HOOK	IRONMONGERY	100mm x 60mm PLATED "T" TYPE HANDLE 3 BY 50mm BRACE BRIDGE


REV.	DESCRIPTION	DATE	APPR'D
DRG. No.	REFERENCE DRAWING		

Client:



LIMPOPO
PROVINCIAL GOVERNMENT
REPUBLIC OF SOUTH AFRICA

DEPARTMENT OF
EDUCATION



**THE
MVULA
TRUST**

A leading developmental NGO

THE MVULA TRUST
9A LANDROS MARE STREET
POLOKWANE
0689
TEL: 015 291 2405 FAX: 015 291 1270

Consultant:



SKY HIGH
consulting engineers


SKY HIGH CONSULTING ENGINEERS C.C.

Head Office
Khurula Park
No 14 Peace Street
P. O. Box 2816
Tzaneen
0850;
Tel: +27 (0)15 307 6961
Fax: +27 (0)86 540 1430
Email:
info@shsconsulting.co.za

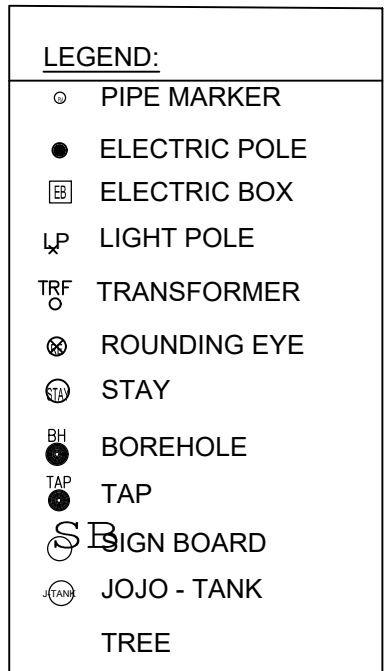
COPYRIGHT AND USE OF THIS DRAWING IS RESERVED	
Designed:	Drawn
Checked:	Civil Engineer
Structural Engineer	Mechanical Engineer
Electrical Engineer	Co-ordination Engineer
Approved :	
Project manager	Director

Contract Number & Project Description :
Contract Number: TMT-LPDE-2019/20-LPCL8-01
CONSTRUCTION OF WATER & SANITATION INFRASTRUCTURE AT RAMUSHASHA JUNIOR PRIMARY SCHOOL IN LIMPOPO

Drawing Description :
STUDENT MALE AND FEMALE TOILETS:
PLAN, SECTION AND ELEVATIONS

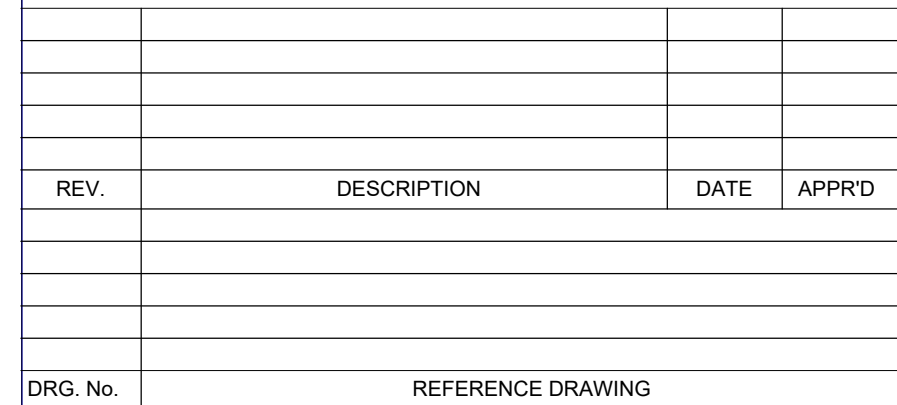
Scale :	DATE	SEP 2022
Consultant Project Number : SHCE - 066 Drawing Number : TMT-MT-FD5/MD5	A1	Revision : 

TENDER



SCHEDULE OF ROOMS		AREA
4 SEATS	FEMALE	FD10&MD6
1 SEAT	DISABLE FEMALE	
4 SEATS	MALE	
1 SEAT	DISABLE MALE	
5 URENALS	MALE	GRD4
5 SEATS	FEMALE	
1 SEAT	DISABLE FEMALE	
2 SEAT	MALE	
1 SEAT	DISABLE MALE	SD4
3 URENALS	MALE	
3 SEATS	FEMALE	
1 SEAT	DISABLE FEMALE	
1 SEAT	MALE	SD4
1 SEAT	DISABLE MALE	
2 URENALS	MALE	

BM1	42150.968	2529265.845	589.898
BM2	42074.573	2529167.553	587.291
BM3	42184.278	2529131.035	595.303
BM4	42211.514	2529159.613	595.391
RAM	42153.131	2529195.322	577.877



LIMPOPO
PROVINCIAL GOVERNMENT
REPUBLIC OF SOUTH AFRICA

DEPARTMENT OF
EDUCATION

 **THE
MVULA
TRUST**

A leading developmental NGO

THE MVULA TRUST
9A LANDROS MARE STREET
POLOKWANE
0950
TEL: 015 291 2405 FAX: 015 291 1270



SKY HIGH
consulting engineers

Head Office
Khurula Park
No 14 Peace Street
P. O. Box 2816
Tzaneen
0850;


Tel: +27 (0)15 307 6961
Fax: +27 (0)86 540 1430
Email: info@shconsulting.co.za

Designed:	Drawn
Checked:	Civil Engineer
Structural Engineer	Mechanical Engineer
Electrical Engineer	Co-ordination Engineer

Project manager

Contract Number: TMT-LPDE-2019/20-LPCL8-01

CONSTRUCTION OF WATER & SANITATION
INFRASTRUCTURE AT RAMUSHASHA JUNIOR PRIMARY
SCHOOL IN LIMPOPO

Scale :	DATE SEP 2022	
Consultant Project Number : SHCE - 066	A1	Revision : 
Drawing Number :		T

TENDER