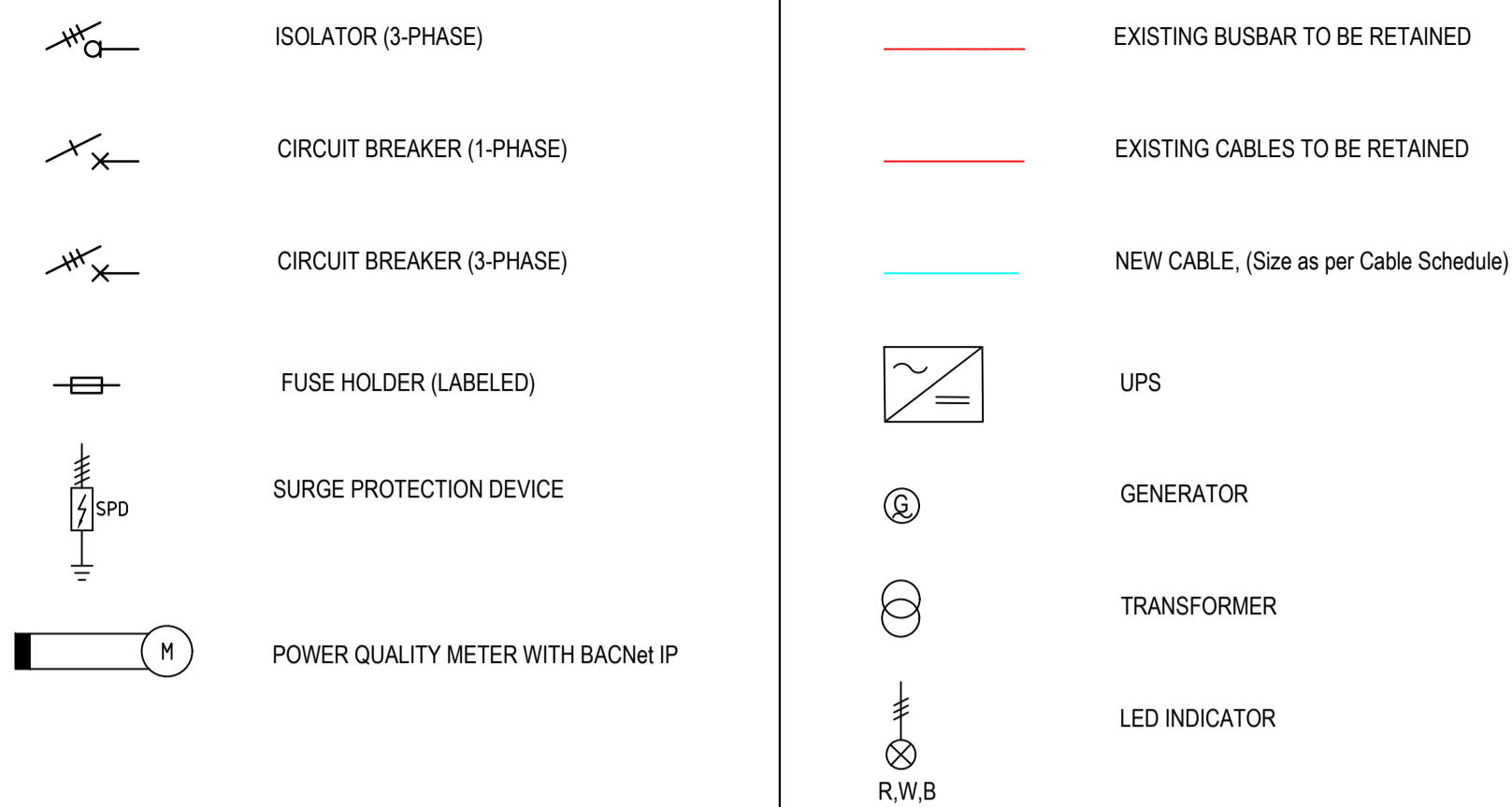


NOTES:

- DB TYPE - FLOOR STANDING: YES
- CABLE/BUSBAR ENTRIES: TOP: YES, BOTTOM: YES
- DB ACCESS FACILITY: TOP: YES, SIDES: YES, REAR: NO
- PADLOCKABLE DOORS: NO
- COLOURS - FRAME: GREY, FACE PLATE: ELECTRIC ORANGE
- SPARE SPACE: 30%
- SPACE LIMITATION: SEE LAYOUT DRAWING & ON SITE
- PAINT FINISH: POWDER COATED
- DB TO BE PROVIDED WITH REMOVABLE GLAND PLATES ON TOP & BOTTOM.
- CABLE/BUSBAR ENTRIES: 4
- DB TO BE MANUFACTURED FROM CORROSION TREATED MILD STEEL
- ALL CIRCUITS TO BE LABELED IN FACTORY, AS PER DESCRIPTION INDICATED.
- BUSBAR TO HAVE COLOUR CODE INDICATION.

- ALL SWITCHGEAR: TO BE OF THE SAME MANUFACTURER.
- WHERE MORE THAN ONE CABLE IS TO BE CONNECTED TO A CIRCUIT BREAKER, THE CIRCUIT BREAKER SHALL BE PROVIDED WITH BUSBAR STUBS AND FLASH BARRIERS.
- MANUFACTURER'S SHOP DRAWINGS TO BE SUBMITTED TO THE ENGINEER, FOR COMMENTS AND APPROVAL, PRIOR TO MANUFACTURE.
- CURRENT LIMITING CIRCUIT BREAKERS TO BE USED TO ACCOMPLISH DOWNSTREAM FAULT CURRENT LEVELS.
- "IN CASE OF ACCIDENTAL CONTACT" LABEL TO BE PROVIDED ON ALL THREE INCOMERS.
- ALL CIRCUIT BREAKERS TO BE ADJUSTED IN FACTORY, AS INDICATED ON DRAWING.
- CIRCUIT BREAKERS TO BE PROVIDED WITH PICK-UP BREAKER STATUS.
- CIRCUIT BREAKERS TO BE MONITORED BY THE BMS THE STATUS OPEN/CLOSE/TRIP
- DB TO BE PROVIDED WITH ARC FLASH SENSORS AND BUSBAR TEMPERATURE SENSORS.
- EACH DB WILL BE FURNISHED WITH A PANEL SERVER TO MONITOR ITEMS 20,21, AND 22
- INTERNAL FORM OF THE DB SEPARATION IS "FORM 2B"
- ALL BUSBAR AND BREAKER RATINGS INDICATED SHALL BE ACHIEVED AT THE FULL LOAD STATED AFTER DERATING OF ALL EQUIPMENT AND AT AN AMBIENT TEMPERATURE OF 40 DEG C.

LEGEND



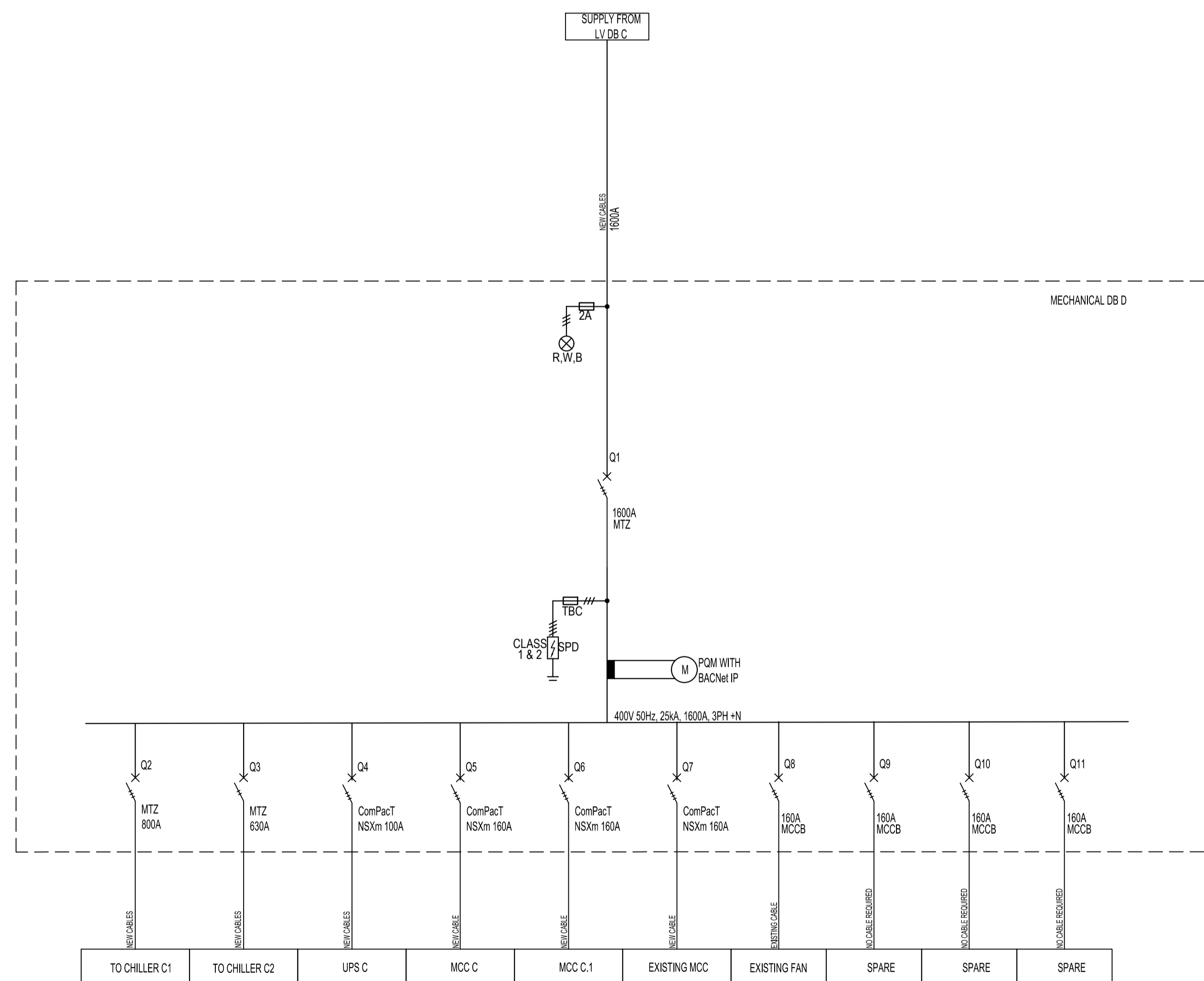
DISCLAIMER

IF CONSTRUCTION DRAWINGS ARE ISSUED UNSIGNED, THE MASTER WITH THE ORIGINAL SIGNATURE OF APPROVAL WILL BE HELD AT THE ZUTARI OFFICE OF THE APPROVER

NOTES:

PANELS MUST BE FITTED WITH:

- MICRO LOGIC BREAKER: 11 OFF
- ALL THE MICROLOGIC TO BE CONNECTED THROUGH NETWORK THROUGH IFM/IFE
- ARC FLASH SENSOR: 2 OFF
- BUSBAR TEMPERATURE SENSOR: 12 OFF
- PANEL SERVER: 1 OFF
- NETWORK SWITCH AND POWER SUPPLY INCLUDED PER BOARD
- THE GLAND PLATES TO BE MINIMUM 304 STAINLESS STEEL



ZUTARI
IMPACT. ENGINEERED.

CLIENT



REV	DATE	REVISION DETAILS	APPROVED
A	30-05-2025	ISSUED FOR INFORMATION	M. BOTHA
T0	10-06-2025	RE-ISSUED FOR TENDER	M. BOTHA
T1	11-11-2025	RE-ISSUED FOR TENDER	M. BOTHA

SCALE	SIZE	FOR TENDER	
NTS	A1		
DRAWN	L. TSIMANE	APPROVED	
DESIGNED	K. COETZER	DATE	
REVIEWED	M. BOTHA	11-11-2025	
		M. BOTHA	

PROJECT
SITA CENTURION DATA CENTRE

TITLE
ELECTRICAL SERVICES
SINGLE LINE DIAGRAM
MECHANICAL DB-C

DRAWING NUMBER					
PROJECT No.	WBS	TYPE	DISC	NUMBER	REV
1001547-	0000	- DRG	- EL	- 1100	- T1

MECHANICAL DB - C