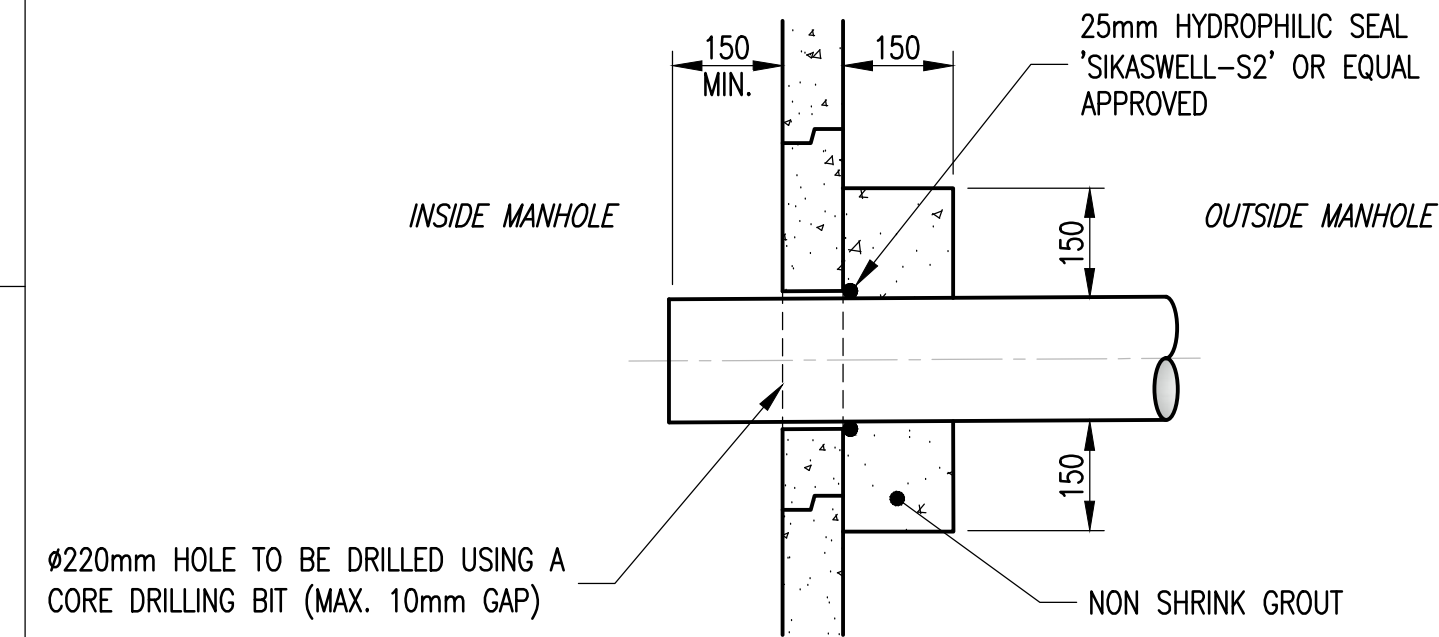


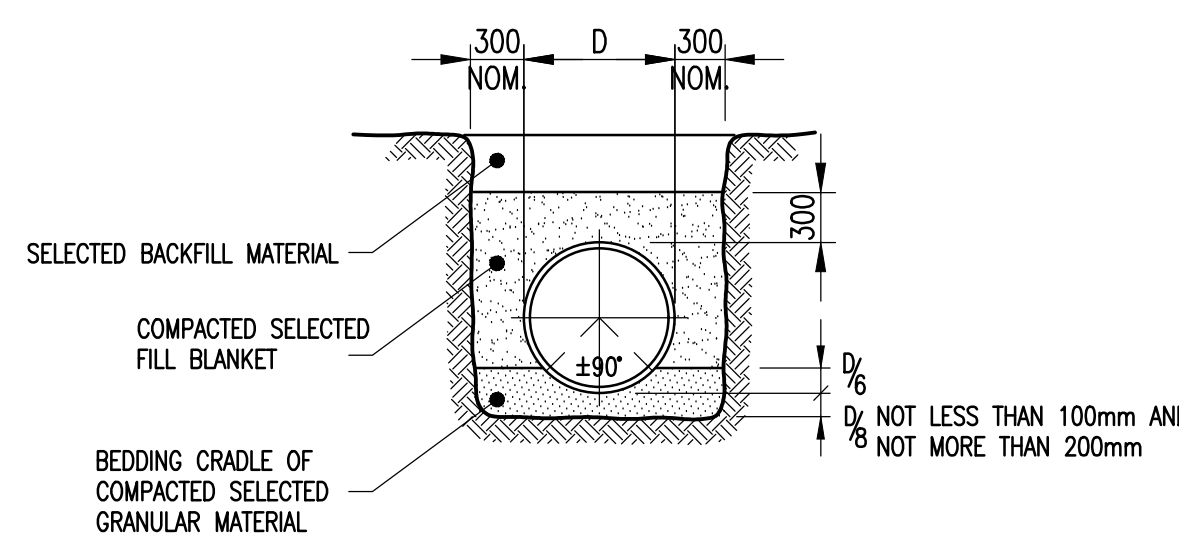
LAYOUT OF MANHOLES
1 : 2000

NOTES

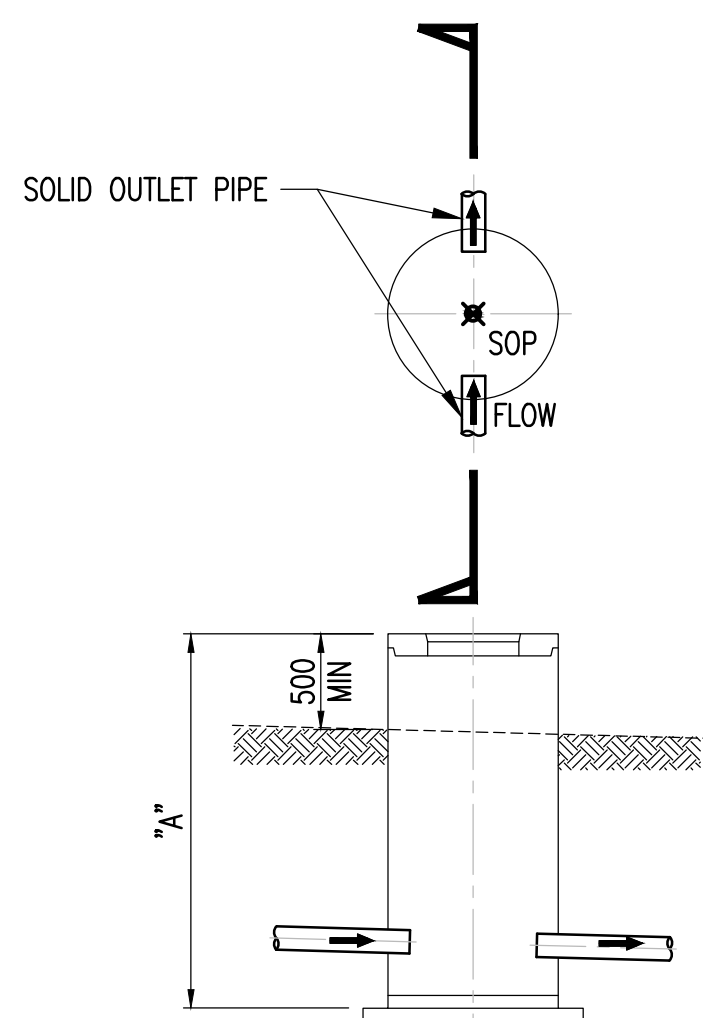
1. GENERAL NOTES
1.1. ALL WORK TO BE EXECUTED IN ACCORDANCE WITH SANS 1200
1.2. ALL CO-ORDINATES TO CAPE CLARKE 1880 L629
1.3. SITE CLEARANCE TO ALIGNMENT OF FULL TRENCH WIDTH
1.4. THE CUT-OFF TRENCH BATTERING BACK OF SLOPES OF 1:1,7 MAY REQUIRE FURTHER FLATTENING IN EXTREMELY WET AREAS
2. EARTHWORKS
2.1. BACKFILL IS TO COMPRISE OF EXCAVATED MATERIAL
2.2. BACKFILL IS TO BE COMPACTED TO 93% MOD AASHTO DENSITY
2.3. BACKFILL LAYERS NOT TO EXCEED 300mm IN THICKNESS
3. CONCRETE
3.1. BLINDING: GRADE 10 MPa MINIMUM THICKNESS 50mm
3.2. MASS: GRADE 30 MPa (UNLESS OTHERWISE STATED)
3.3. STRENGTH: GRADE 30 MPa (UNLESS OTHERWISE STATED)
3.4. CURING: CONCRETE SURFACES ARE TO BE CURED TO SANS 1200G
4. FORM WORK
4.1. ALL CORNERS ARE TO BE PROVIDED WITH 20X20 CHAMFERS
4.2. EXPOSED SURFACE FINISH: SMOOTH
4.3. HIDDEN SURFACE FINISH : ROUGH
5. UNIFORMED SURFACE FINISHES
5.1. SURFACES COVERED BY EARTH: STRIKE OFF
5.2. EXPOSED SURFACES: WOOD FLOAT
6. GROUTING
ALL POCKETS ARE TO BE GROUTED. USE 1:4 CEMENT : SAND FILL
7. GEOTEXTILE LEGEND
7.1. GEOTEXTILE TYPE 1: NON-WOVEN NEEDLE PUNCHED (CLASS 1 GRI GT13) -- SEPARATION
7.2. GEOTEXTILE TYPE 2: NON-WOVEN NEEDLE PUNCHED (CLASS 1000 GRI GT12B) -- PROTECTION



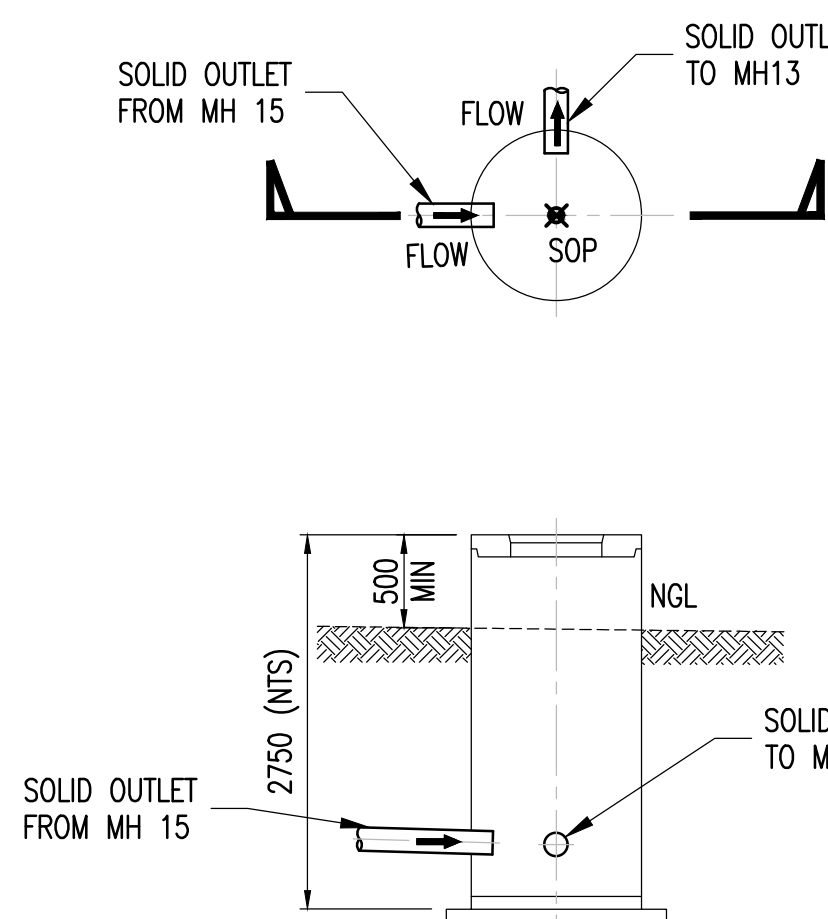
PIPE PENETRATION DETAIL
1 : 10



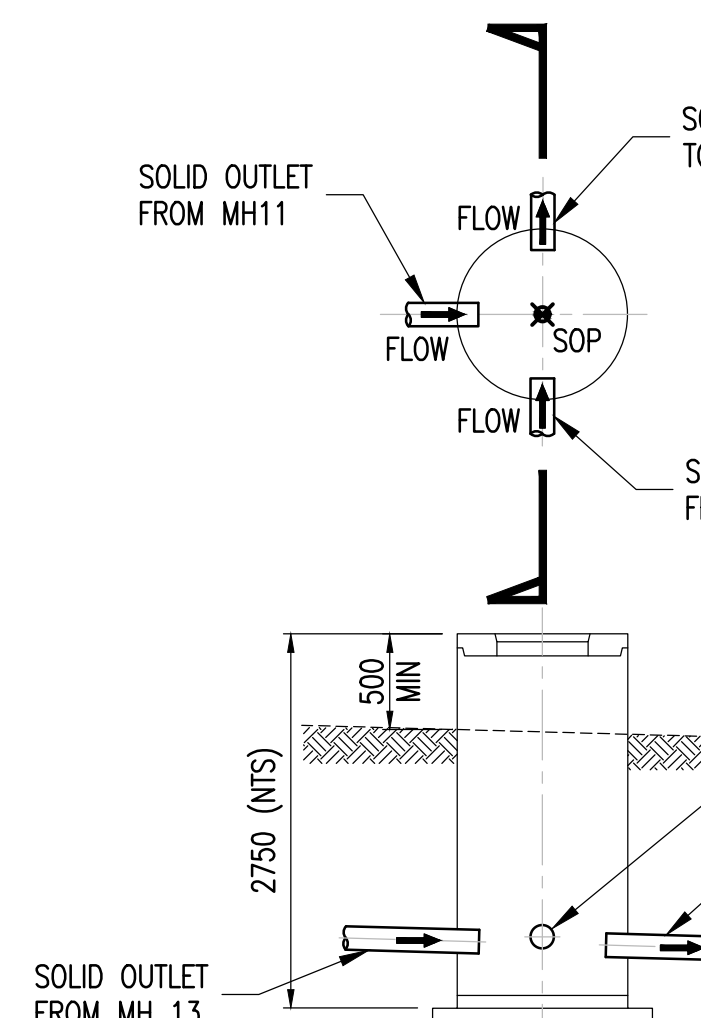
BEDDING CLASS 'C'
TO SANS 1200 LB



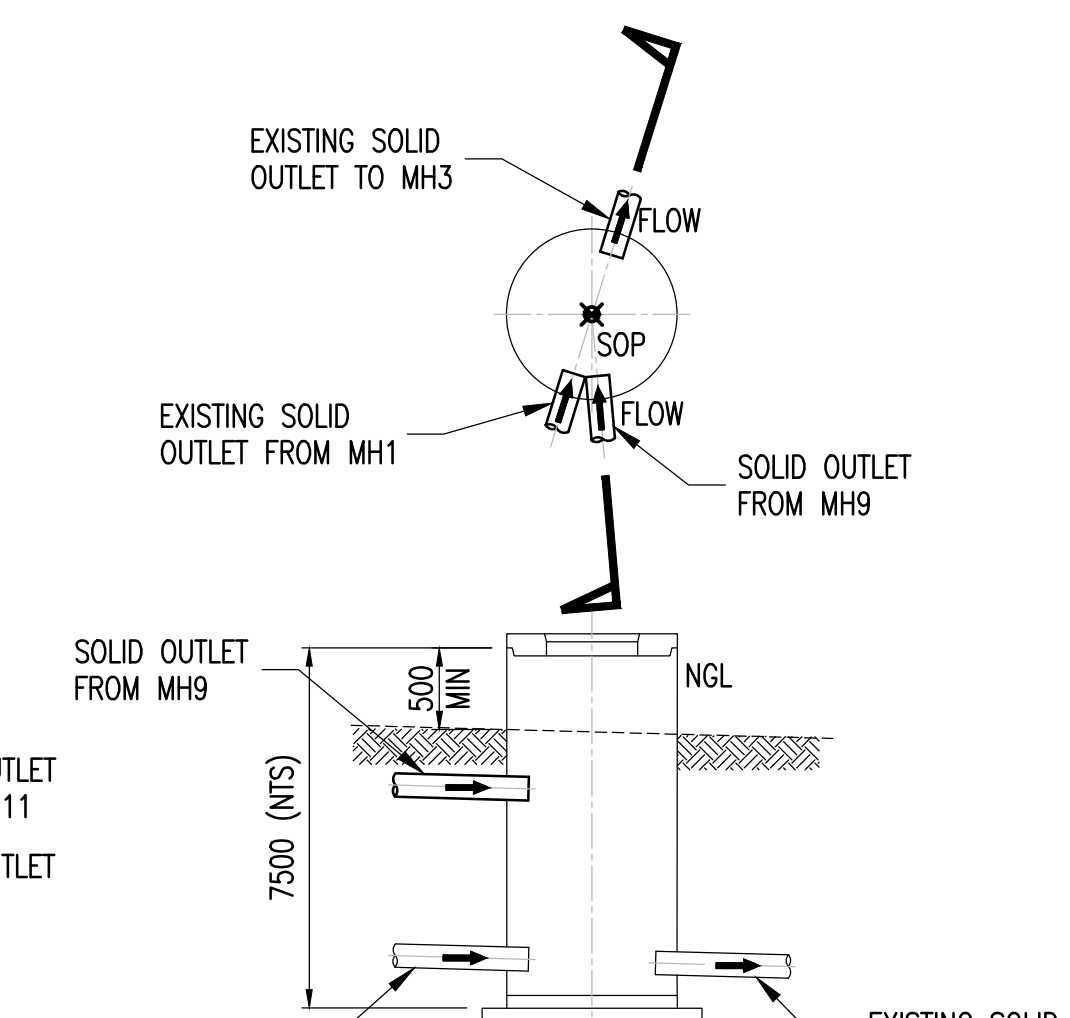
TYP. MH SECTION
1 : 50



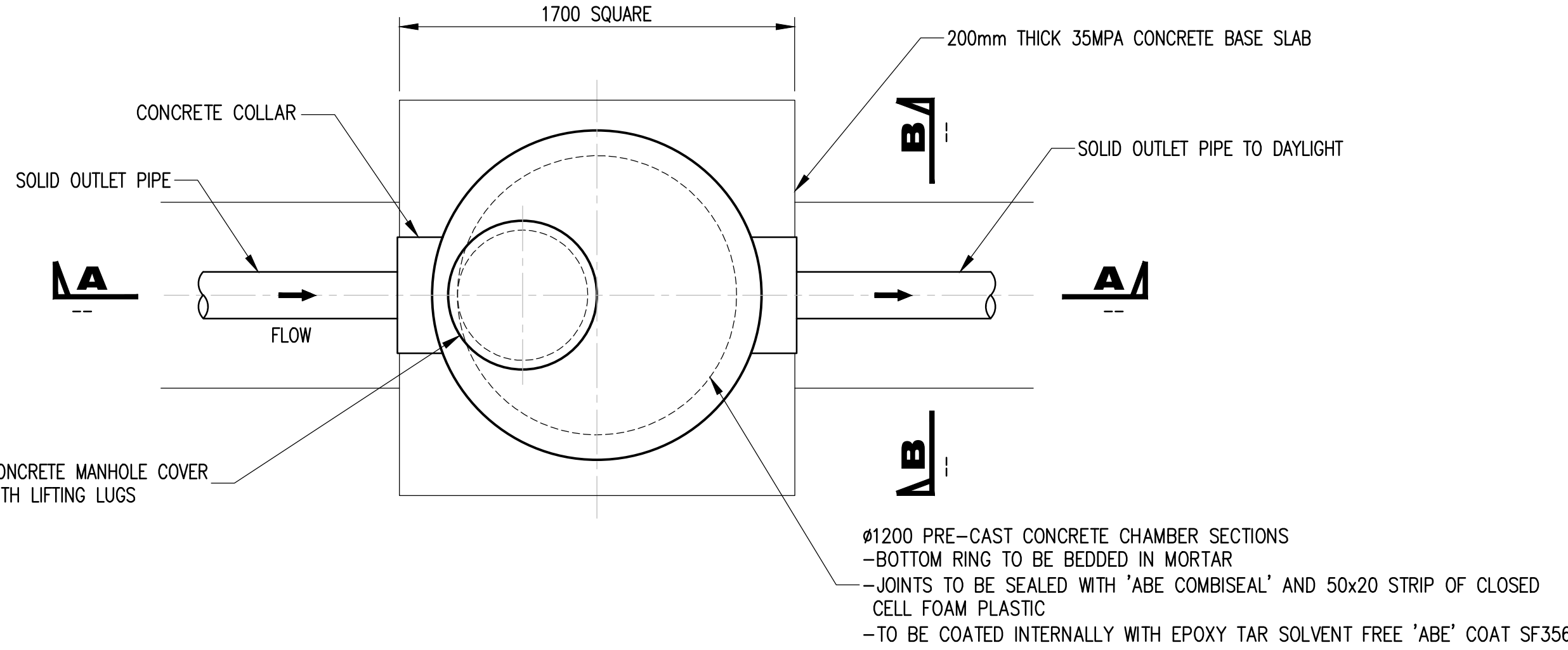
MH14
1 : 50



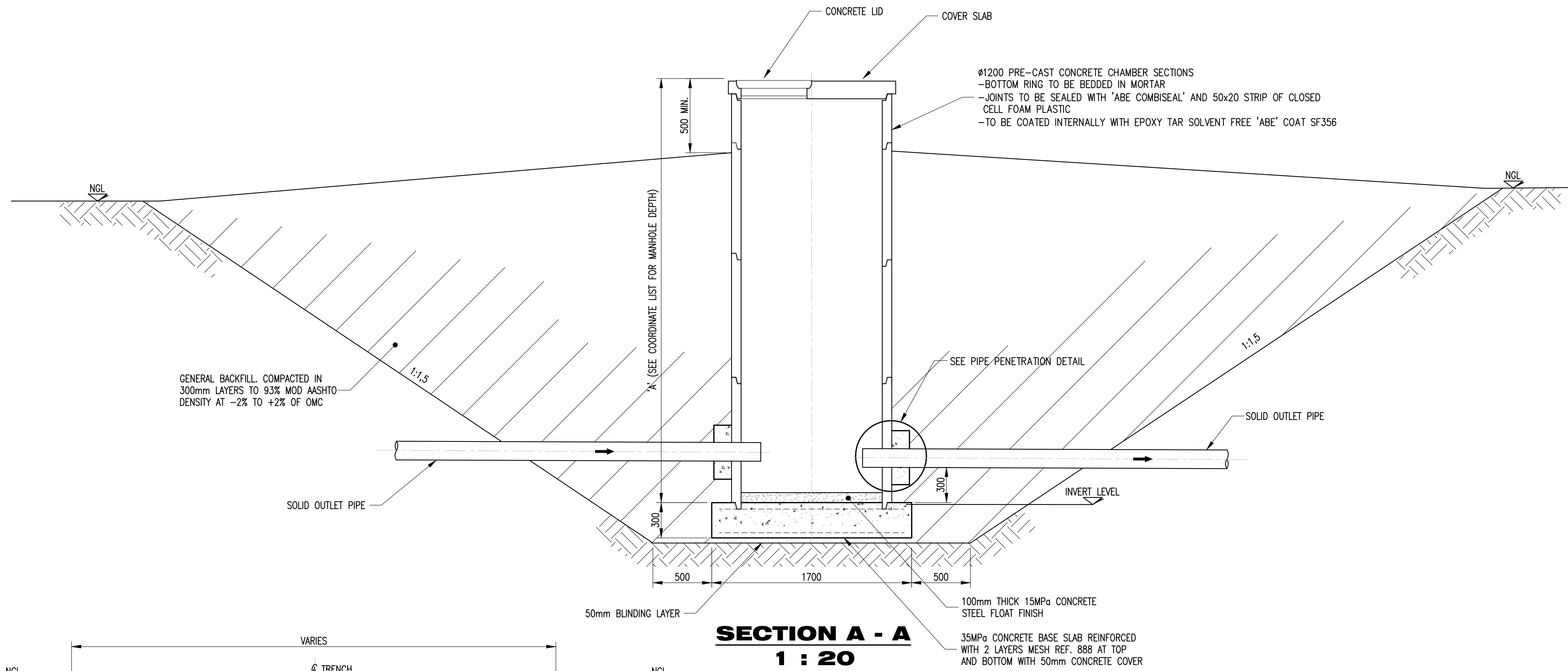
MH12
1 : 50



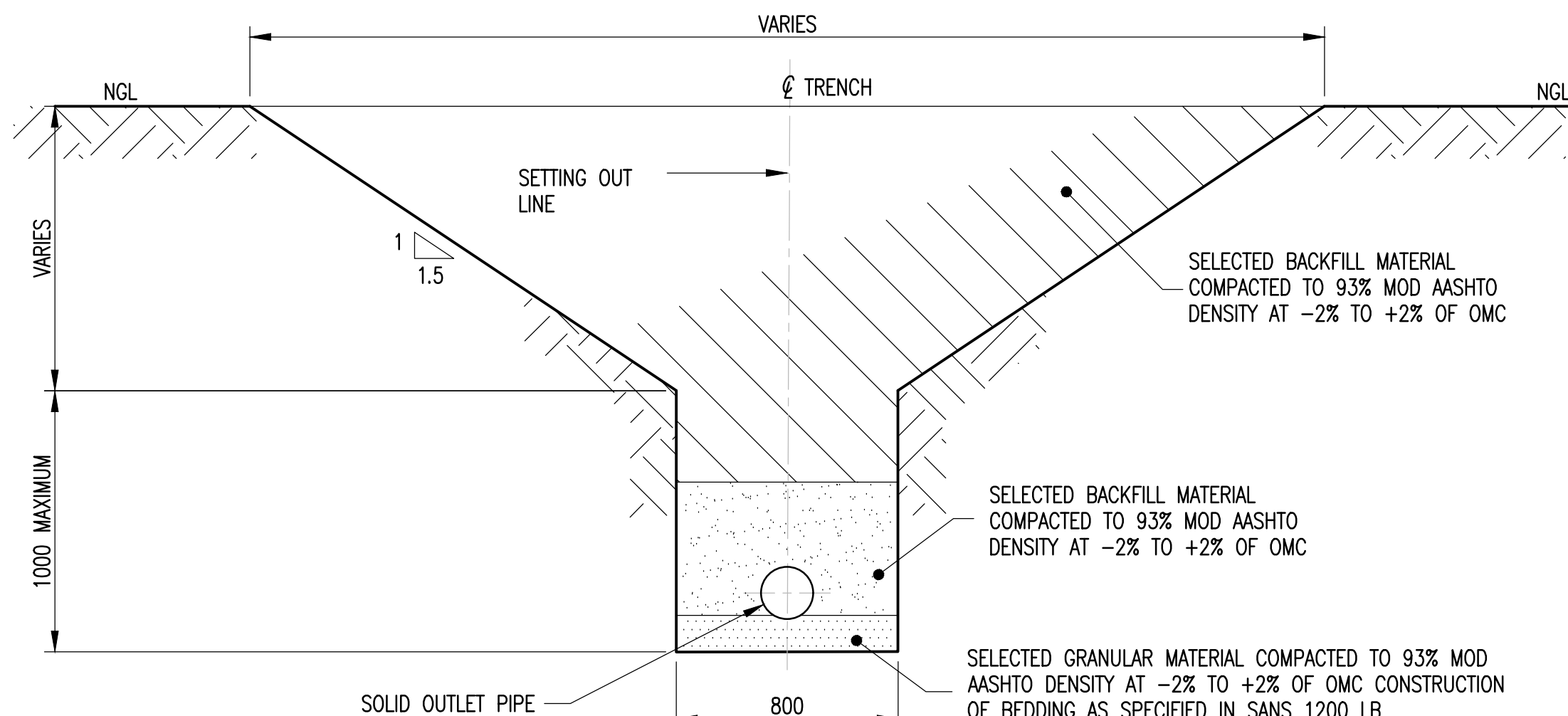
EXIST. MANHOLE 2
1 : 50



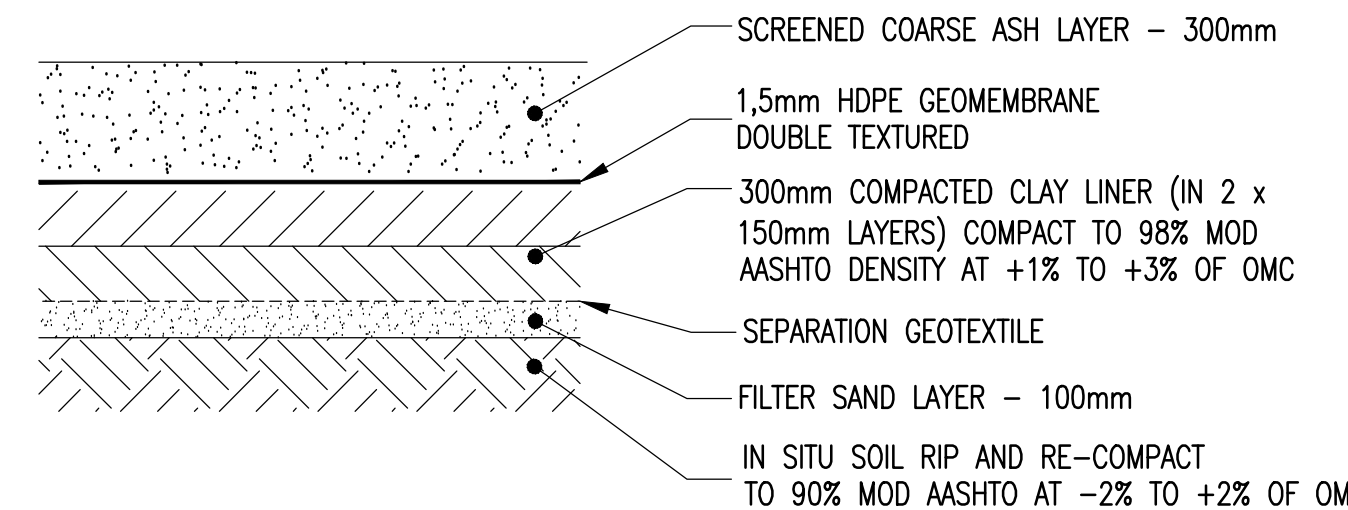
PLAN ON SUB-SOIL MANHOLE
1 : 20



SECTION A - A
1 : 20



SECTION B - B
1 : 20



TYPICAL LINER DETAIL

CONSTRUCTION

KKS ???

D.O.	1	10.05.18	PR. ENG. SIGNATURE ADDED	LdW	MMO	CC	22-004	POLLUTION CONTROL DAM 5 - COMPARTMENT 2 PLAN, SECTIONS AND DETAILS
D.O.	0	11.08.17	ISSUED FOR CONSTRUCTION	LdW	MMO	CC	22-002	AREA 2A LINER DETAILS
D.O.	A	26.9.16	ISSUED FOR APPROVAL	LdW	MMO	CC	22-001	AREA 2A LAYOUT
D.O.	REV	DATE	** REVISION **	REV	CHKD	AUTH	KKS APP	REFERENCE DRAWINGS
DRG	REGISTR		AUTHORISED FOR ESKOM BY	DATE				
DSGN	APPROV	CC	04.08.17	A.K.				
KKS	APP							
D.O.	AUTH	CC	04.08.17					
CHKD	BY	MMO	04.08.17					
DRAWN	BY	LdW	26.9.16					
SCALE	AS SHOWN							

ESKOM HOLDINGS SOC Ltd.
MAJUBA POWER STATION
EXTENSION OF ASH DISPOSAL FACILITY
PACKAGE 2
AREA 2A AND 2B SUB SOIL DRAIN MANHOLES

F224-22-003

0.66/99347

SPF CODE

SHEET

REV

1

1

DRAINAGE PIPES LEGEND

- SUBSOIL :**
HERRINGBONE COLLECTOR PIPES
COLLECTOR PIPES AT TOE
OUTLET PIPES
ALL TO BE CLASS PE100, PN16, SDR11
- #110 CORRUGATED PERFORATED SLOTTED HDPE
#160 CORRUGATED PERFORATED SLOTTED HDPE
#200 SOLID IN BEDDING CLASS 'C' CONDITIONS
- LEACHATE COLLECTION :**
HERRINGBONE COLLECTOR PIPE
COLLECTOR AT TOE
OUTLET PIPES
ALL TO BE CLASS PE100, PN16, SDR11
- #110 CORRUGATED PERFORATED SLOTTED HDPE
#160 CORRUGATED PERFORATED SLOTTED HDPE
#200 SOLID IN BEDDING CLASS 'C' CONDITIONS

NOTE:
CO-ORDINATE SYSTEM REFLECTS CLARKE 1880 L629.
THIS DRAWING IS THE PROPERTY OF JONES & WAGENER (PTY) LIMITED AND MAY NOT BE REPRODUCED IN WHOLE OR IN PART WITHOUT THEIR WRITTEN CONSENT