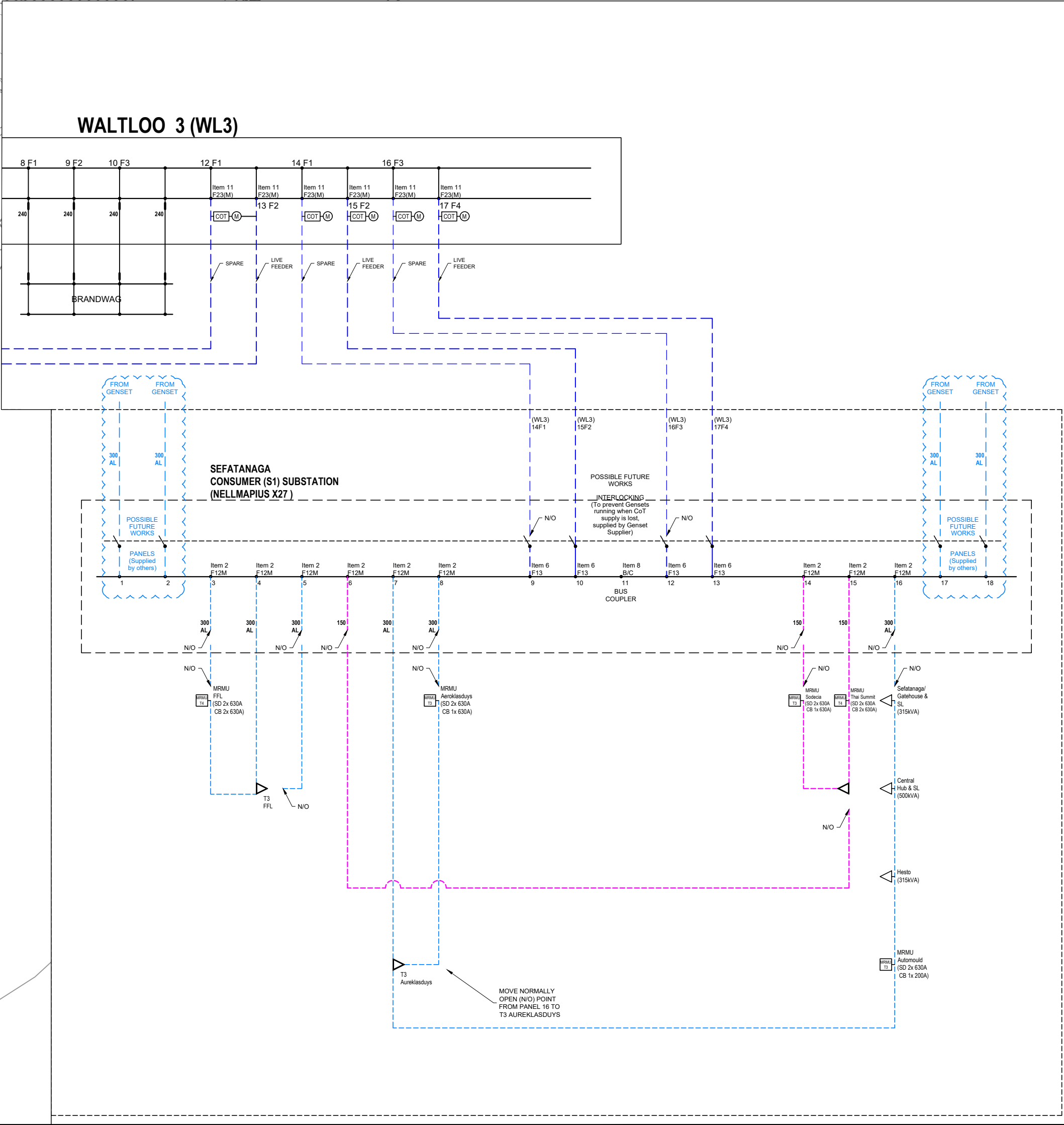


PHASE 1
Portion 89 of the Farm Willows 340-JR
Nellmapius X27

NELLMAPIUS X27
Zoning: Industrial 1
Site Area: 278 608.4m²
GFA: 164 297.5m²
FAR: 40VAm²
Total kVA calculated: 6.572MVA in terms of CoT Tariff Policy
Total kVA required: 24.2MVA
Connection: Consumer (S1) substation



SCALE FOR REDUCED PLAN

0 10 20 30 40 50
50mm ON ORIGINAL PLAN

IX engineers retains the copyright in all intellectual property, including designs and/or documents prepared in terms of this appointment for the project covered by the appointment. The client may use the designs and/or documents for the sole purpose of their intended use on this project only subject to payment for the design having been received. Use for any other purpose, whether or not the design and/or documents have been paid for constitutes an infringement of copyright, and all rights are reserved.

All dimensions must be verified on site before the works commence. Refer any discrepancies to the Engineer.

Copyright reserved

NOTES

LEGEND

EXISTING	NEW	DESCRIPTION
---	---	30mm ² x 3 CORE N.P.C. 15KV COPPER CABLE
---	---	30mm ² x 3 CORE Cu P.V.C. 15KV COPPER CABLE
---	---	15mm ² x 3 CORE Cu P.V.C. 15KV COPPER CABLE
---	---	75mm ² x 3 CORE Cu P.V.C. 15KV COPPER CABLE
---	---	MINIATURE SUBSTATION (C 3 INDICATES 30kVA AND 3 INDICATES 60kVA)
---	---	TOWNSHIP AREA & LOT CONNECTION AREA
---	---	T3 RING MAIN UNIT (T3 RING OUTDOORS TYPE)
---	---	METERING TYPE T3 RING MAIN UNIT (T3 RING OUTDOORS TYPE)
---	---	T4 RING MAIN UNIT (T4 RING OUTDOORS TYPE)
---	---	METERING TYPE T4 RING MAIN UNIT (T4 RING OUTDOORS TYPE)
---	---	SERVITUDE (6m x 30m)
---	---	150mm ² x 3 CORE Cu P.V.C. 80kV P.V.C. CABLE - 30mm ² BSCN
---	---	45 (mm ²) x 3 CORE Cu P.V.C. 80kV P.V.C. CABLE - 80mm ² BSCN
---	---	75mm ² x 3 CORE Cu P.V.C. 80kV P.V.C. CABLE
---	---	10.5m MOUNTING HEIGHT (12.5m) STREET LIGHT POLE C/W 144W LED LUMINAIRE
---	---	10.5m MOUNTING HEIGHT (12.5m) STREET LIGHT POLE C/W 2x 144 LED LUMINAIRE
---	---	15mm ² x 3 CORE Cu P.V.C. 80kV P.V.C. STREET LIGHT CABLE
---	---	15mm ² x 3 CORE Cu P.V.C. 80kV P.V.C. STREET LIGHT CABLE
---	---	110mm DIA. METRE SLEEVE PIPE, TELECOMS (6mm)
---	---	110mm DIA. METRE SLEEVE PIPE, TELECOMS (6mm)
---	---	40mm DIA. FLEXIBLE ORANGE OPTIC SPOKE SLEEVE
---	---	15 METER WIDE, 3 WAY FOR TRAFFIC LIGHTS
---	---	10 (mm ²) x 3 CORE Cu P.V.C. 80kV P.V.C. CABLE FOR TRAFFIC SIGNALS
---	---	80mm DIA. SLEEVE PIPE (AS INDICATES NUMBER OF SLEEVE PIPES)
---	---	100mm DIA. SLEEVE PIPE (AS INDICATES NUMBER OF SLEEVE PIPES) - DRILLING
---	---	110mm DIA. SLEEVE PIPE (AS INDICATES NUMBER OF SLEEVE PIPES)

NOTES: NO CONSTRUCTION MAY START UNLESS WAYLEAVES HAVE BEEN RECEIVED

No	DATE	DESCRIPTION	DRW	CHK
1	2021/01/15	NELLMAPIUS X27 - INTERNAL ELECTRICAL AND TELECOMS SERVICES	JHS	
2	2020/08/08	NELLMAPIUS X27 - INTERNAL ELECTRICAL SERVICES	JHS	
3	2020/02/02	ADD SLD	JHS	

REVISION SCHEDULE

CONSULTING ENGINEER

940 505
PR No. DATE

CLIENT

DATE

DESIGNED	DRAWN	CHECKED
JH SADIE	JH SADIE	T MEYER

FOR CONSTRUCTION

CONSULTANT

IXengineers
Infrastructure Excellence

Eastwood Office Park | Protea House | 270 Lynnwood Service Road
Lynnwood Ridge | Pretoria | 0081
Tel: +27 (0) 12 745 2000 | Fax: +27 (0) 12 745 2001
www.ixengineers.co.za

CLIENT

COEGA DEVELOPMENT CORPORATION

PROJECT

NELLMAPIUS X27 & SAMCOR PARK X9

DRAWING DESCRIPTION

NELLMAPIUS X27

ELECTRICAL AND TELECOMS RETICULATION

DATE	SCALE	ORIGINAL SIZE
2020/06/01	1 : 1 500	A1

DRAWING NUMBER	REV
301856-E-110-INT-EL (NM27)	AB