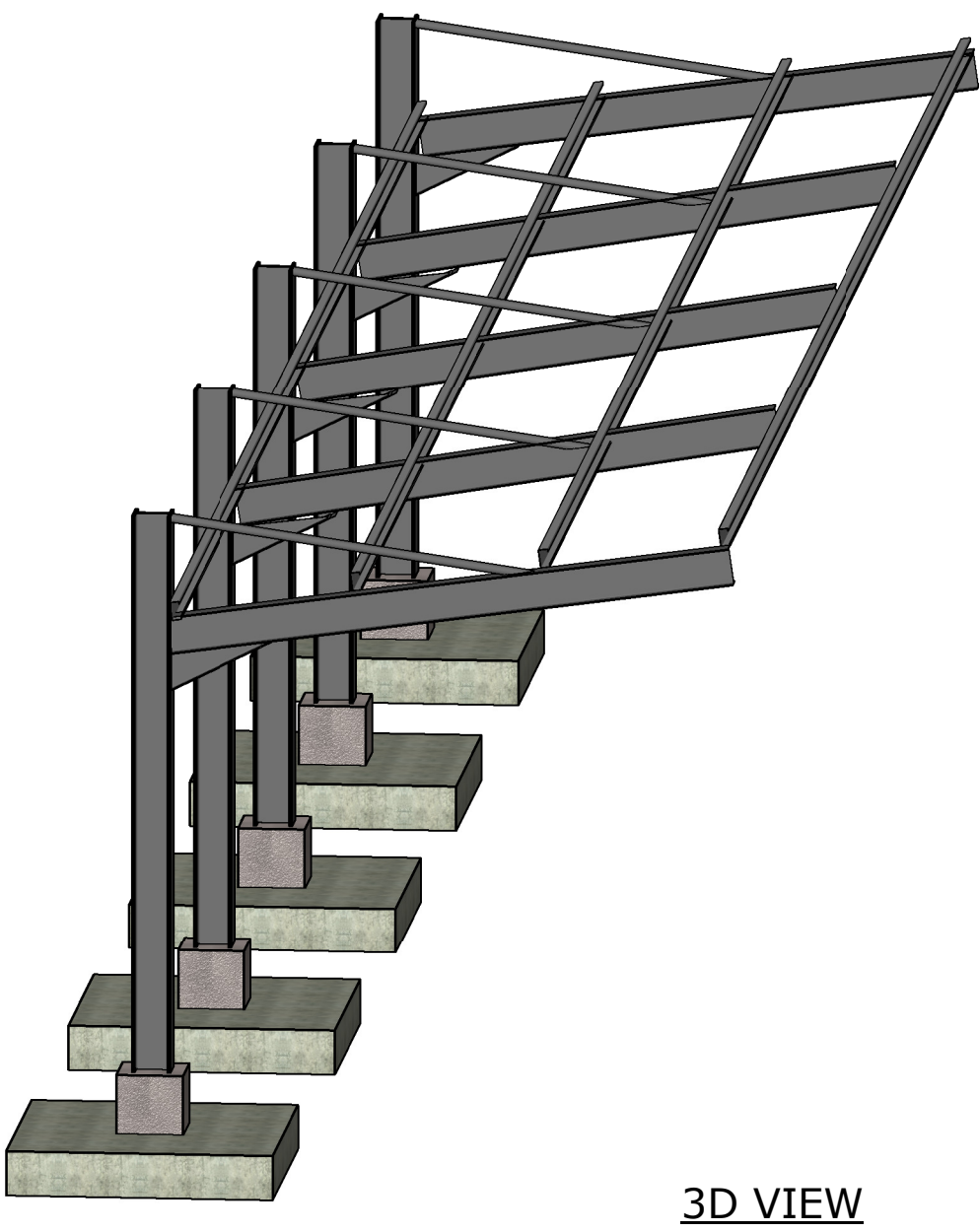
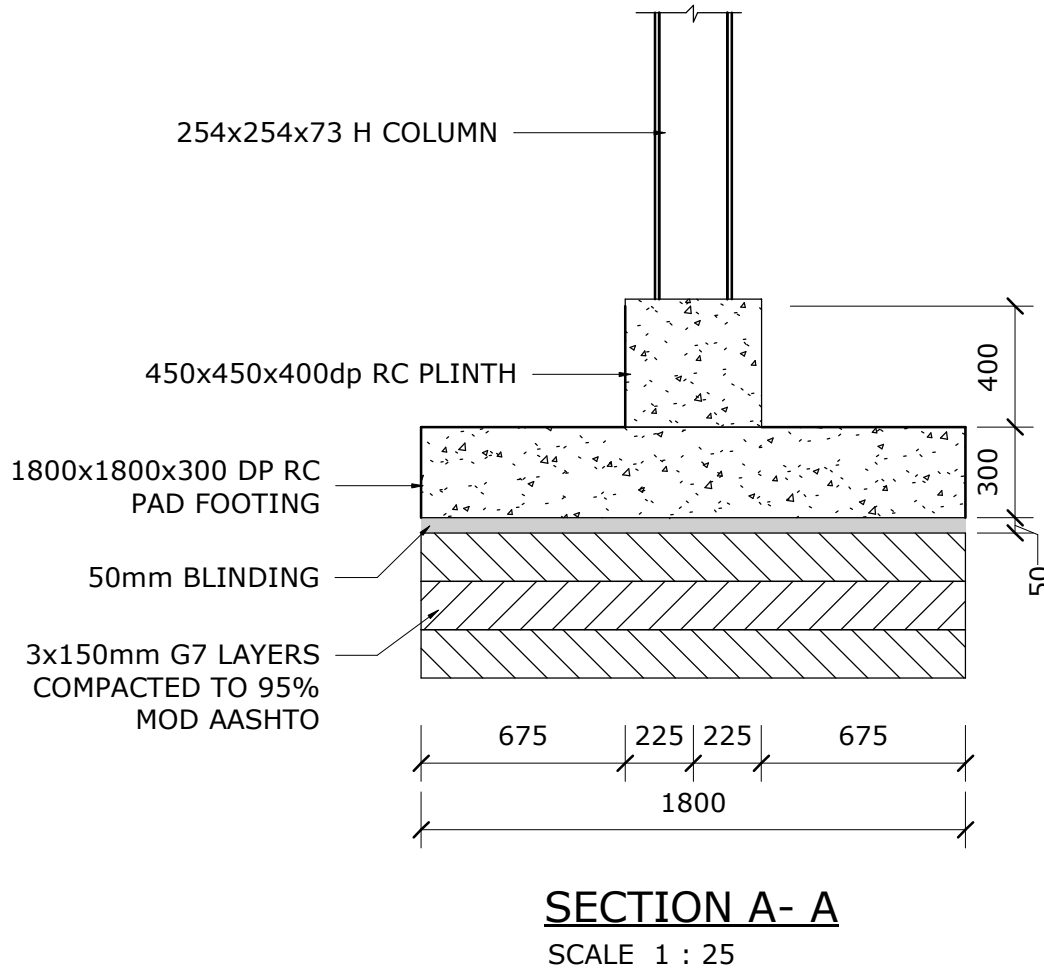
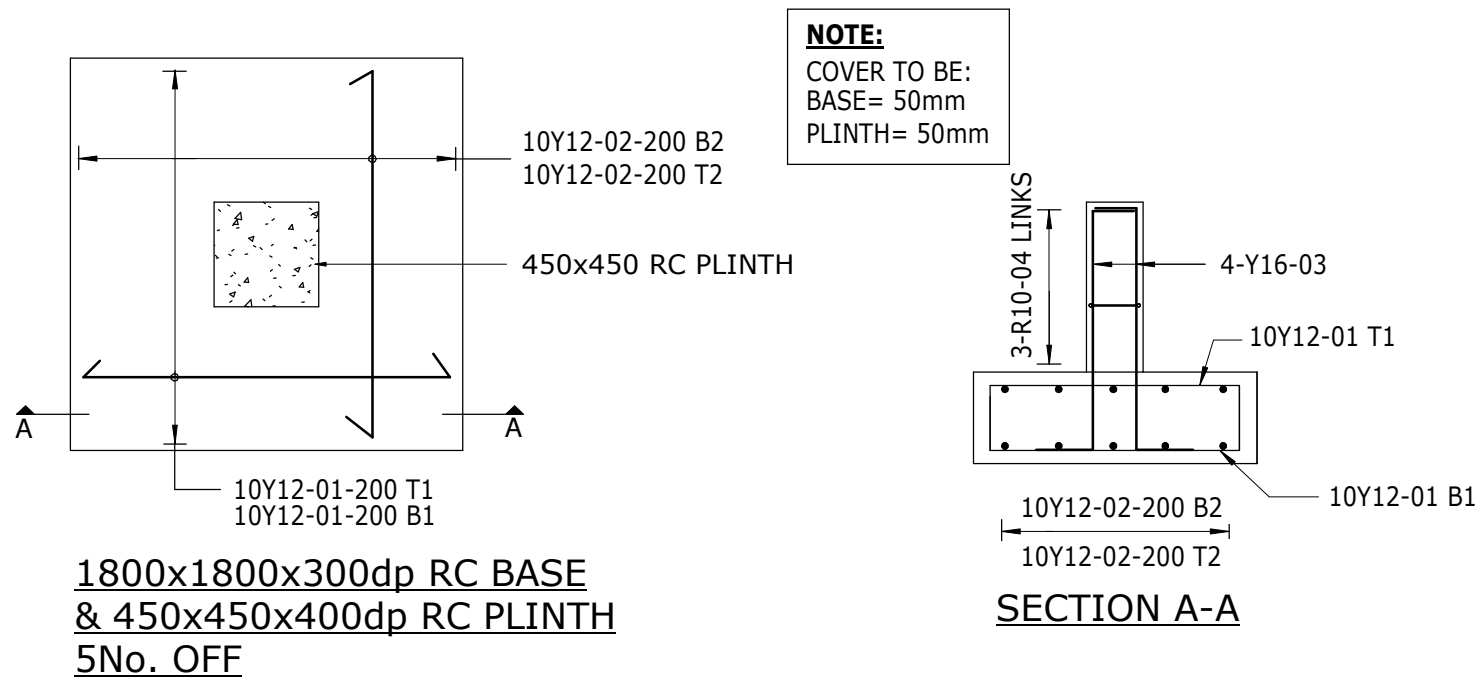


FOUNDATION LAYOUT  
SCALE 1 : 100

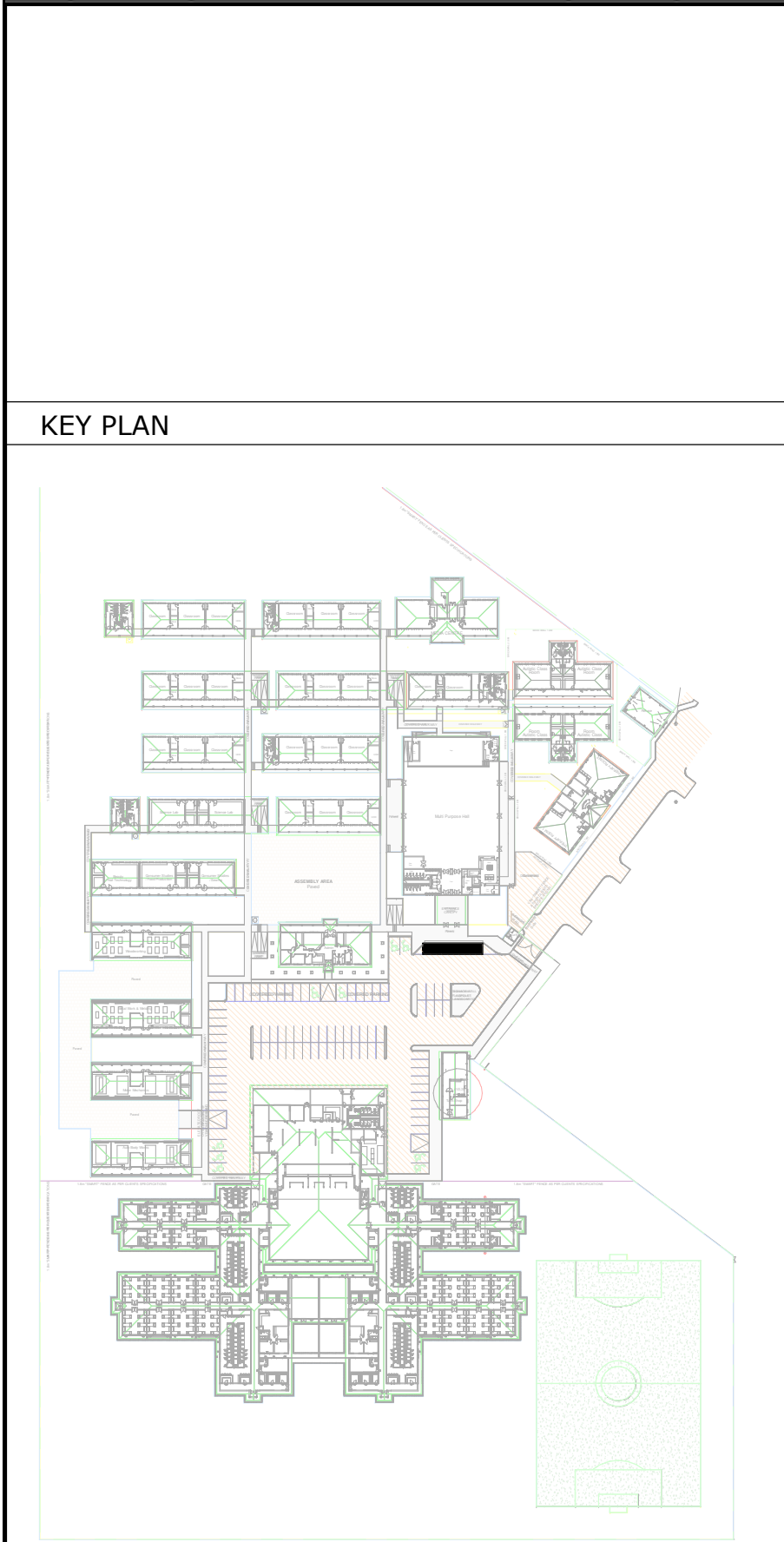


3D VIEW

- NOTES:
- ALL DRAWINGS TO BE READ IN CONJUNCTION WITH THE ARCHITECT DRAWINGS
  - ALL FOUNDATION EXCAVATION TO BE INSPECTED AND APPROVED BY ENGINEER BEFORE FIXING STEEL REINFORCEMENT OR CASTING CONCRETE. WHERE SUITABLE FOUNDING MATERIAL IS NOT ENCOUNTERED AT THE DEPTH SHOWN ON THE FOUNDATION DRAWINGS, EXCAVATION IS TO PROCEED TO A DEPTH AS APPROVED BY THE ENGINEER ON SITE.  
STRIP OR PAD FOOTING TO BE CAST AT A DEPTH MINIMUM 600mm DEEP. BELOW THIS LEVEL, CONSTRUCT A SOIL RAFT COMPACTED IN 6X150 LAYERS OF G7 AT 93% MOD AASHTO AT OMC.
  - BELOW SURFACE BED: INSITU SOIL TO RIP AND COMPACT, THEN 2 LAYERS IN 150mm MAXIMUM COMPACTED TO 93% MODIFIED AASHTO DENSITY AT OMC.
  - CONCRETE MIXES:  
BLINDING 15/19  
FOUNDATIONS 30/19  
RC PAD FOOTING, SURFACE BED 25/19  
BEAMS AND COLUMNS 30/19
  - BEARING PRESSURE ON SOIL RAFT = 100KPa  
SCHOOL FOUNDATION PRESSURE = 44.35 KN/m<sup>2</sup>  
HALL FOUNDATION PRESSURE = 76.21 KN/m<sup>2</sup>  
SUPERIMPOSED LOADS:  
LIVE ON UNACCESSIBLE ROOF = 0.25kN/m<sup>2</sup>  
WIND SPEED = 28 m/s  
WIND PRESSURE = 447.29 N/m<sup>2</sup>

STRIP FOOTING		600x250
STRUCTURAL ELEMENTS		REINFORCEMENT IN kg/m <sup>3</sup>
PAD FOOTING FOR COLUMNS		120 kg/m <sup>3</sup>

REV	DATE	DESCRIPTION	ISSUED BY	APPR BY
0	21.10.13	ISSUED FOR TENDER	MNP	ET



CLIENT




**public works & infrastructure**  
Department of Public Works & Infrastructure  
FREE STATE PROVINCE

CONSULTANT



**GladAfrica**  
Consulting Engineers

**Gauteng Office (Head Office)**  
GladAfrica House, Hertford Office Park  
90 Bekker Road, Vorna Valley, Midrand, 1686  
P.O Box 6723 Halfway House 1685  
Tel. +27 11 312 2537/2584  
Fax +27 11 805 1905  
[www.gladafrica.com](http://www.gladafrica.com)

	NAME	REG. NO.	SIGNATURE
DRAWN	MN PHAHLAMOHLAKA	N/A	N/A
DESIGNED	E. TLOMATSANA	2017305033	

PROJECT DESCRIPTION  
TROMSBURG SPECIAL NEEDS SCHOOL

DRAWING TITLE  
BUS DROP OFF CANOPY  
FOUNDATION LAYOUT & SECTIONS

STATUS LEGEND I = INFORMATION CV = CONCEPT AND VIABILITY D = DESIGN DEVELOPMENT T = TENDER C = CONSTRUCTION AB = AS BUILT		SHEET SIZE A1  SCALE AS SHOWN	
DISCIPLINE	PROJECT NUMBER	STATUS	REVISION
STRUCTURAL	CE00092-ST-BDC-100	T	0

FOR TENDER

				Project Name			TROMPSBURG SCHOOL			Ref. Dwg. No.			CE00092-ST-BR-100		
				Project Number			CE00092			Schedule No.			01		
				Date			13.09.2021			Revision No.			0.		
				Design By			E. TLOMATSANA			Checked By			E TLOMATSANA		
STRUCTURAL MEMBER	BAR MARK	TYPE & SIZE	No. OF MEMBERS	No. IN EACH MEMBER	TOTAL NUMBERS	CUT LENGTH mm	SHAPE CODE	DIMENSIONS							
								A mm	B mm	C mm	D mm	E/R mm			
850x850x250 DP RC COLUMN BASE	01	Y12	5	20	100	2050	38	200	1700	(200)					
	02	Y12	5	20	100	2000	38	180	1680	(180)					
	03	Y16	5	4	20	1100	54	380	600	(300)					
	04	R10	5	3	15	1700	60	350	350						
STEEL TO COMPLY WITH : SANS 282-2003						STOOLS SIT ON B1 AND SUPPORT T2 LAYER									
TOTAL MASS	Y10	Y12	Y16	Y20	Y25	Y32	Y40	R8	R10	R12	R16	R20	R25	R32	R40
		360	38						14						
ABBREVIATIONS :															
T top B bottom B1 1st lowest layer T1 1st top most layer T2 2nd layer down B2 2nd layer up EF each face FF far face															
NF near face EW each way STG stagger ALT alternate ABR alternate bars reversed															

BENDING SCHEDULE