



**National
Research
Foundation**

Invitation to Quote

**YOU ARE HEREBY INVITED TO QUOTE FOR REQUIREMENTS LISTED IN THIS
DOCUMENT**

Quote Number:

NRF/ CORP EM RFQ 76/2025-26

**THE APPOINTMENT OF A 2CE CIDB-GRADED OR HIGHER CE CIDB-GRADED SERVICE
PROVIDER TO DEMOLISH THE EXISTING ENTRANCE STAIRCASE DESIGN, CONSTRUCT A NEW
STAIRCASE AND MODIFY THE EXISTING WHEELCHAIR ACCESS RAMP AT THE NATIONAL
RESEARCH FOUNDATION PREMISES IN PRETORIA, BRUMMERIA PREMISES PRETORIA,
BRUMMERIA**

INVITATION TO QUOTE (SBD 1A)			
Quote Number		NRF/ CORP EM RFQ 76/2025-26	
Compulsory Site Briefing		Venue: Albert Luthuli Auditorium Time: 09:00AM- 10:30AM Date: 10 December 2025	
Closing Date and Time (as per NRF systems)		15 December 2025 @ 16:00PM	
HIGH LEVEL SUMMARY OF REQUIREMENTS			
<p>The National Research Foundation (NRF) hereby invites service providers with a CIDB Grade 2CE or higher CE to tender for the demolition of the existing entrance staircase design, construct a new staircase and modify the existing wheelchair access ramp. The service provider must complete the construction and modification according to the as-built drawings, compile commissioning/hand-over documentation.</p> <p>The construction involves modifying the existing entrance staircase and access ramp to ensure compliance with SANS10400. The scope of work entails the demolition and reconstruction of the entrance staircase and access ramp, as well as modifying stormwater management in some areas to improve drainage and to avoid ponding during rainy seasons.</p> <p>All work will be carried out at the NRF Address:</p> <p>NRF Building, South Gate, CSIR Complex, Meiring Naudé Road, Brummeria, Pretoria.</p>			
RESPONSE DOCUMENTS ARE DELIVERED VIA EMAILS:			
EMAILS ADDRESS: Rfq@nrf.ac.za		Electronic Submission <u>ONLY</u>	
Bidding procedure enquiries may be directed in writing to:		Technical information may be directed in writing to:	
Section	Supply Chain Management	Section	Estate Management
Contact person	SCM Coordinator	Contact person	Estate Management (Technical)
Email	tender.enquiries@nrf.ac.za do not submit your bid to this mailbox, it is strictly for enquiries		

SUPPLIER INFORMATION					
Name Of Bidder					
CIDB Registration no:.....					
Postal Address					
Street Address					
Telephone Number					
Code		Number			
Cell Phone Number					
Code		Number			
Facsimile Number					
Code		Number			
E-Mail Address					
VAT Registration Number					
Tax Compliance Status	Tax Compliance System PIN		OR	Central Supplier Database No.	MAAA
B-BBEE Status Level Verification Certificate		Tick Applicable Box. <input type="checkbox"/> Yes <input type="checkbox"/> No		B-BBEE Status Level Sworn Affidavit	Tick Applicable Box. <input type="checkbox"/> Yes <input type="checkbox"/> No
[A B-BBEE status level verification certificate/ sworn affidavit (for EMEs & QSEs) must be submitted in order to qualify for preference points for B-BBEE]					

SUPPLIER INFORMATION			
Are you the accredited representative in South Africa for the goods /services/works offered?	<input type="checkbox"/> Yes <input type="checkbox"/> No [If yes enclose proof]	Are you a foreign-based supplier for the goods/services/ works offered?	<input type="checkbox"/> Yes <input type="checkbox"/> No [If yes, answer the questionnaire below]
QUESTIONNAIRE TO BIDDING FOREIGN SUPPLIERS			
Is the entity a resident of the Republic of South Africa (RSA)?			<input type="checkbox"/> Yes <input type="checkbox"/> No
Does the entity have a branch in the RSA?			<input type="checkbox"/> Yes <input type="checkbox"/> No
Does the entity have a permanent establishment in the RSA?			<input type="checkbox"/> Yes <input type="checkbox"/> No
Does the entity have any source of income in the RSA?			<input type="checkbox"/> Yes <input type="checkbox"/> No
Is the entity liable in the RSA for any form of taxation?			<input type="checkbox"/> Yes <input type="checkbox"/> No
If the answer is "No" to all of the above, then it is not a requirement to register for a tax compliance status system pin code from the South African Revenue Service (SARS) and if not register as per 2.3 below.			

TERMS AND CONDITIONS FOR BIDDING (SBD 1B)	
1. BID SUBMISSION:	
1.1	Bids must be delivered by the stipulated time to the correct address. Late bids will not be accepted for consideration.
1.2	All bids must be submitted on the official forms provided–(not to be re-typed) or in the manner prescribed in the bid document. Bid pages are bound to minimise risk of lost pages.
1.3	This bid is subject to the Preferential Procurement Policy Framework Act, 2000 and the Preferential Procurement Regulations, 2022, the General Conditions Of Contract (GCC) with its special conditions of contract, and, if applicable, any other legislative requirements.
2. TAX COMPLIANCE REQUIREMENTS	
2.1	Bidders must ensure compliance with their tax obligations.
2.2	Bidders are required to submit their unique personal identification number (PIN) issued by SARS to enable the organ of state to verify the taxpayer's profile and tax status.
2.3	Application for tax compliance status (TCS) pin may be made via e-Filing through the SARS website www.sars.gov.za .

TERMS AND CONDITIONS FOR BIDDING (SBD 1B)		
2.4	Bidders may also submit a printed TCS certificate together with the bid.	
2.5	In bids where consortia / joint ventures / sub-contractors are involved, each party must submit a separate TCS certificate / PIN / CSD number.	
2.6	Where no TCS is available but the bidder is registered on the Central Supplier Database (CSD), a CSD number must be provided.	
2.7	No bids will be considered from persons in the service of the state, companies with directors who are persons in the service of the state, or close corporations with members persons in the service of the state.	
3.	TWO ENVELOPE SYSTEM	No
4.	VALIDITY PERIOD FROM DATE OF CLOSURE	60 days
5. THE BIDDING SELECTION PROCESS		
<p><u>Stage 1 – Compliance to submission requirements</u></p> <p>Bidders warrant that their proposal document has, as a minimum; the specified documents required for evaluating their proposals as set out in the Returnable Document List and conform to all the terms, conditions, and specifications as set out in this document.</p>		
<p><u>Stage 2 – Evaluation of Bids against Technical Specifications</u></p> <p>Bidders achieving the minimum threshold in the specification to enter the Price/Preference scoring stage:</p>		
<p><u>Stage 2A – Evaluation of Bids against Specifications including Quality</u></p> <p>The NRF evaluates each bidder's written response to the specifications issued in accordance to published evaluation criteria set as in Section D.</p>		
<p><u>Stage 2B – Due Diligence Interviews or Proof of Delivery/Concept against Specifications</u></p> <p>Where circumstances justifies it, the NRF conducts interviews with shortlisted bidders for them to present further information or provide further proof to the evaluation committee. In these cases, the National Research Foundation provides the areas of concern to the short listed bidders to address in their presentations with this document and, where necessary, may provide further areas of concern to the short listed bidders at this stage.</p>		
<p><u>Stage 2C – Due Diligence Research</u></p> <p>The National Research Foundation confirms the recommended bidder(s)'s reference letters with referees to confirm the recommendation(s).</p>		
<p><u>Stage 3 – Price/Preference Evaluation</u></p> <p><u>Basis of fair competition:</u></p>		

TERMS AND CONDITIONS FOR BIDDING (SBD 1B)

The NRF compares each bidder's pricing proposal on an equal and fair comparison basis equitable to all bidders, taking into account all aspects of the bid's pricing requirements including the application of fair pricing tests as set out below in the section "Insufficiency of Funds".

Ranking of the bidders pricing:

The NRF ranks the qualifying bids on price with lowest priced Bid receiving the maximum points (either 80 or 90) and the remainder ranked in relation to the lowest priced bid. The NRF adds the bidders' claimed preference points as verified to the submitted preference claim form (SBD 6.1) to provide the final ranking for the award decision.

Stage 4 – Checking Tax Compliance

Stage 4A – Taxpayers Resident in South Africa

The NRF notifies the recommended bidder in writing where their tax compliance check reflects that they are non-compliant and provides the recommended bidder seven (7) working days to submit written proof from SARS of their tax compliance status or proof that they have made an arrangement with SARS to meet their outstanding tax obligations. Failure to deliver such written evidence of compliance results in the rejection of that recommended bid.

Stage 4B – Non-Resident Foreign Bidders

Where foreign bidders are submitting a bid, they complete all sections of the SBD1 especially the tax questionnaire. The NRF submit the Foreign Bidder's completed SBD1 to the South African Revenue Service to obtain from the South African Revenue Service the Confirmation of Tax Obligations letter. Where South Africa Revenue Services does not issue the letter, Stage 4A applies in clearing the reason for not receiving the letter.

Stage 5 – Award and Contract Signing

The NRF nominates the bidder with the highest combined score for the contract award subject to the bidder having supplied the relevant administrative documentation.

6. ACKNOWLEDGEMENT OF READING EACH PAGE

The bidder warrants by signature in this document that the bidder has read and accepts each page.

7. CENTRAL SUPPLIER DATABASE REGISTRATION

Bidders are requested to register on the Central Supplier Database and to include in their bid their Master Registration Number (Supplier Number) in order to enable the NRF to verify the supplier's tax status on the Central Supplier Database.

8. CLARIFICATION

If the respondent wishes to clarify aspects of this request or the acquisition process, they contact the officials listed under the enquiries section above. The National Research Foundation does not provide the origin of the request to any party.

9. RESPONSE PREPARATION COSTS

The NRF is not liable for any costs incurred by a bidder in the process of responding to this Bid Invitation, including on-site presentations.

10. COLLUSION, FRAUD AND CORRUPTION

Any effort by Bidder/s to influence evaluation, comparisons, or award decisions in any manner will result in the rejection and disqualification of the bidder concerned.

11. FRONTING

The NRF, in ensuring that bidders conduct themselves in an honest manner will, as part of the bid evaluation processes where applicable, conduct or initiate the necessary enquiries/investigations to determine the accuracy of the representation made in the bid documents. The onus is on the bidder to prove that fronting does not exist, should the National Research Foundation establish and notify the bidder of potential breaches of any of the fronting indicators as contained in the Department of Trade and Industry's "Guidelines on Complex Structures and Transactions and Fronting". Failure to do so within a period of 7 days from date of notification will invalidate the bid/contract and may also result in the restriction of the bidder to conduct business with the public sector for a period not exceeding 10 years, in addition to any other remedies the NRF may have against the bidder concerned.

12. DISCLAIMERS

The NRF has produced this document in good faith. The NRF, its agents, and its employees and associates do not warrant its accuracy or completeness. The NRF makes no representation, warranty, assurance, guarantee or endorsements to any provider/bidder concerning the document, whether with regard to its accuracy, completeness or otherwise and the NRF shall have no liability towards the responding service providers or any other party in connection therewith.

13. CANCELLATION OF THE QUOTATION PRIOR TO AWARD

<p><u>Procurement not required:</u> The NRF cancels the Bid Invitation prior to making an award if due to changed circumstances there is no need for the specified procurement in the document.</p>
<p><u>No Acceptable Quotations:</u> The NRF cancels the Quotation Invitation prior to making an award if it receives no acceptable bids i.e. that do not meet the minimum requirements set out in this document.</p>
<p><u>Invalid Bid Procedure:</u> The NRF cancels the Quotation Invitation prior to making an award if a material irregularity occurred in the bid process.</p>
<p><u>Insufficiency of Funds or Quotations not within a fair price range:</u> The NRF cancels the Quotation Invitation prior to making an award if the funds are no longer available to cover the total envisaged expenditure or if the price offered by the bidder scoring the highest points is not market related.</p> <p>The NRF conducts fair pricing tests to arrive at an opinion of reasonableness of the bid price offered. Where these tests reflect pricing outside of the established fair price range, the evaluators may recommend price negotiation. The NRF only negotiates price, and no other component, with the winning bidder or, where that bidder refuses negotiation, with the next ranked bidder in the price/preference ranking until a market related price is achieved.</p>
<p>SBD 1 SIGNATURE</p>
<p>NB: FAILURE TO PROVIDE / OR COMPLY WITH ANY OF THE ABOVE PARTICULARS MAY RENDER THE BID INVALID.</p>
<p>SIGNATURE OF BIDDER:</p>
<p>CAPACITY UNDER WHICH THIS BID IS SIGNED</p> <p>(Proof of authority must be submitted e.g. company resolution)</p>
<p>DATE:</p>

<p>SCOPE OF WORK</p>
<p>INTRODUCTION TO THE NRF</p> <p>The National Research Foundation Act, Act 23 of 1998, establishes the National Research Foundation ("NRF") as the juristic person that makes this bid invitation and will contract with the awarded bidder. The Public Finance Management Act classifies the organisation as a Schedule 3A Public Entity.</p>
<p>CONTEXT OF THIS PROCUREMENT</p> <p>The existing staircase present safety and accessibility challenges, including water puddle formation due to weather conditions. This has become a safety hazard as incidents of slippery have been reported. The appointment of a contractor with CIDB grading of 2CE or higher is to address these safety concerns with a permanent solution while complying the regulatory standards.</p>
<p>CONTRACT PERIOD</p> <p>The contract period for this bid contract is once off.</p>

DESCRIPTION OF GOODS/DETAILED SPECIFICATION

Scope of works

The Contractor is to execute the following main elements, inter alia, as detailed in the drawings:

- a) **Entrance Staircase:** Demolish the existing staircase component within the battery limits and construct the new compliant staircase (refer to drawing ENK-CIV-P047-25-01 and ENK-RL-P047-25-001).
- b) **Access Ramp:** Demolish the existing access ramp component within the battery limits and construct the new compliant ramp portion (refer to drawing ENK-CIV-P047-25-01 and ENK-RL-P047-25-001).
- c) **Stormwater Management:** Install new dia. 110mm uPVC pipe on the existing pipe and cut the existing ramp to allow the pipe to run through so that it will not drain on the ramp. Also, demolish sections of the ramp surface to install new weep drains to drain the plantation. On the staircase uppermost landing, install a new drain to discharge ponding water into the planter area (refer to ENK-CIV-P047-25-01).

CONSTRUCTION WORK REQUIREMENTS

SAMPLE AND PROPRIETARY MATERIALS

- a) The Contractor shall supply all required samples at their own cost. Material or work not conforming to approved samples will be rejected.
- b) For proprietary materials, if alternatives are proposed, information must be supplied to indicate the quality or type of material offered.
- c) The recommendations of manufacturers of patent materials must be strictly adhered to regarding use, mixing, and application, unless otherwise instructed in writing by the Engineer.

DEMOLITION WORKS

- a) The existing staircase and ramp shall be demolished as shown (refer to ENK-CIV-P047-25-01).
- b) Saw-cutting must be carried out before demolition to avoid damage to adjacent structures.
- c) Landing Tie-In: 350mm of the existing landing slab shall be demolished to enable a proper tie-in of the new reinforced concrete staircase.
- d) All debris shall be removed from the site to an approved disposal facility in accordance with local municipality by-laws.

EARTHWORKS AND SITE PREPARATIONS

- a) All earthworks shall comply with SANS 2001-EM1 (2014), including excavation, backfill, and compaction requirements.
- b) Material disturbed during demolition shall be removed to expose competent material. The Contractor is to use only approved fill material as specified by the Engineer.
- c) All unsuitable materials, i.e., construction rubble, shall be disposed of at a suitable dumping site and the rate must include transport to the dumping site as well as all dumping charges applicable.

- d) Fill Material: Only approved fill material, as specified by the Engineer, shall be used. Unsuitable materials (construction rubble) must be disposed of at a suitable dumping site.
- e) Compaction: Backfilling must be compacted in 150mm layers to 95% MOD AASHTO using suitable approved fill. Compaction must be tested and approved before concrete placement.
- f) The Contractor shall arrange for independent compaction testing before any construction takes place. A minimum of 3 evenly distributed places per site shall be tested after platform completion.
- g) Excavations are to be inspected by the Engineer before pouring any concrete.

STRUCTURAL CONCRETE WORKS

- a) All concrete work shall comply with the latest edition of SANS 2001 Part CC1: 2012 (Concrete works structural) and SANS 878 (Ready Mixed Concrete).
- b) The production. Transportation and placing of concrete shall at all times be under the supervision of a responsible person approved by the Engineer, with an adequate knowledge of concrete technology insofar as mixing, placing, compacting, curing and testing of concrete are considered.
- c) All surfaces shall be protected from ice or frost damage.
- d) Concrete shall not be placed during periods of heavy or prolonged rainfall. If, in the opinion of the Engineer, sufficient precautions have not been taken in this regard, then no concrete shall be placed.
- e) Foundations and ground beams must be 30MPa concrete strength at 28 days.
- f) Contractor to use cover blocks to ensure concrete cover as per the approved drawings. Where not specified, to ensure minimum cover as specified by SANS 10100-2 Table 4 is used.
- g) Ramp and stairs must be 30MPa concrete strength at 28 days.
- h) Formwork shall be watertight and designed in accordance with SANS 10100-2 Clause 6.
- i) Contractor shall remove the formwork only after the concrete has reached sufficient strength
- j) Finishes shall be classified as U1-U4 depending on exposure and functional requirements.
- k) Contractor shall ensure the reinforcement is accurately placed and securely fixed as per the approved drawings
- l) Reinforcement: All reinforcement must comply with SANS 920 and be free from rust, oil, and contaminants. The Contractor is to use cover blocks to ensure concrete cover as per the approved drawings and SANS 10100-2.

COMPLIANT / MODIFIED ENTRANCE STAIRCASE

- a) Construction base: works must be on suitable and well-compacted material.
- b) Dimensions (as per drawing), Risers: 170mm, Treads: 350mm.
- c) Interface: Y12 dowels at 300mm c/c shall be anchored into the existing landing with approved chemical mortar.
- d) Finishing: Minimum 30mm cover to reinforcement on all faces. Exposed edges shall be chamfered at 25 x 25mm.
- e) Curing: Freshly cast concrete must be kept moist and protected from the sun and wind for at least 1 week after casting.

COMPLIANT / MODIFIED ACCESS RAMP

- a) Compliance: The ramp must comply with SANS 10400-S: Facilities for Persons with Disabilities.
- b) Construction: Ramp to have Mesh Ref 395, a 230mm wide RC edge beam, and a 350mm ground beam to be cast monolithically with the 100mm thick slab.
- c) Geometric Requirements: Maximum slope of 1:12 (8.33%), minimum clear width of 1.2m, non-slip surfacing, and handrails as per the architectural schedule.
- d) Interface: Y12 dowels at 300mm c/c shall be anchored into the existing landing with approved chemical mortar.
- e) Curing: The floor slab shall be properly cured for a minimum period of seven days by keeping it moist and covered, or by applying a concrete curing compound (applied after floating).
- f) Joints: A 6mm soft board and a sealant are to be used at joint locations to separate the slabs. A SABS minimum 250-micron-thickness plastic sheeting is required throughout the structure

STORMWATER AND DRAINAGE

- a) Pipe Material: New $\phi 110$ mm uPVC stormwater pipes must be SANS 966 approved.
- b) Pipe Bedding: Minimum 100mm selected granular material compacted to 95% MOD AASHTO.
- c) Ramp Drainage: Saw cut slots shall be provided in the ramp as shown on drawings.
- d) Staircase Landing: The existing top staircase landing must have a modified screed and tiling sloped toward the stormwater outlet to prevent ponding.

JOINTS AND CONNECTIONS

- a) Construction Joints: Saw-cut joints at positions shown on the drawing, filled with polyurethane sealant and backing cord.
- b) Isolation Joints: At existing walls, provide 12mm bitumen-impregnated softboard with polysulphide sealant to prevent stress transfer

FINISHES AND FITTINGS

- a) Supply and fix tactile ground surface indicators on landings and approaches in contrasting colour to comply with SANS 10400-S.
- b) Non-slip tiles on treads, risers, landing and access ramp.
- c) Supply and install a new stainless steel handrail at the entrance staircase. Contractor to the provided handrail is in accordance with SANS 10400-M height and secure fixing requirements. Entrance staircase middle handrail to be in accordance with the Architect's specification or client's requirements.
- d) Dimension stones: Natural stone type BNS0016 white quartzite mix, with high compressive strength and good durability, sourced from an acceptable local quarry. Face dressing: rusticated. Bond to homogeneous pattern: regular coursed. Jointing: cement mortar class II, 6 mm wide. Pointing: rake out exposed joints 12 mm deep and fill with suitable grout. To match the existing

WATERPROOFING

- a) Waterproofing. Derbigum, installed strictly according to the manufacturer's specification.

DRAWINGS AND DOCUMENTATION

- a) The drawings issued to tenderers as part of the tender documents must be regarded as provisional and preliminary for the tender's benefit to generally assess the scope of work and to develop their pricing strategy.
- b) The Works shall be carried out against drawing revisions marked as "For Construction". The Contractor must ensure that they always refer to the latest construction drawing revision issued by the Engineer. All drawings, this specification and the architectural layout drawings must be read in conjunction.

Architectural Drawings	
Drawing Number	Drawing Description
BLH-A0-00-NFR-A-10-0-100	Staircase floor plan
BLH-A0-00-NFR-A-10-0-300	Staircase Section
BLH-A0-00-DR-A-10-0-800	Stair floor plan and sections
BLH-A0-00-DR-A-10-0-801	Stair Details
Drawing Number	Drawing Description
BLH-A0-00-NFR-A-10-0-100	Staircase floor plan
BLH-A0-00-NFR-A-10-0-300	Staircase Section
BLH-A0-00-DR-A-10-0-800	Stair floor plan and sections
BLH-A0-00-DR-A-10-0-801	Stair Details
Structural Drawings	
Drawing Number	Drawing Description
ENK-CIV-P047-25-01	Entrance staircase demolition layout
	New entrance staircase structural layout
	Access ramp demolition layout
ENK-RL-P047-25-01	New entrance staircase reinforcement layout Access ramp structural layout and reinforcement layout

ENK-BS-P047-25-01	Entrance stair and access ramp reinforcement schedule
ENK-PL-P047-25-01	Site survey of entrance staircase and access ramp

STANDARD PROJECT SPECIFICATION COMPLIANCE

- a) All civil and structural works shall be executed in accordance with the applicable South African National Standards (SANS) for construction works, including the SANS 2001 series, SANS 1200 series, and project-specific remedial works specifications issued by the Engineer.
- b) The works are to be executed subject to these specifications, standards and workmanship requirements. Please note that compliance with all these specifications and standards, including requirements in terms of qualifications, accreditation (where applicable), and work experience of both the tendering entity and its key personnel, will be material in the Employer's risk assessment forwarding this contract.
- c) Where reference is made to the standard specifications in this contract, it means that the latest edition of the documents which apply to the specific discipline involved in the works, as referenced under and of the headings below. The standard specification may, due to its generality and completeness, also cover items not applicable to this particular contract.
- d) In the event of any discrepancy between the project specifications and a part of the standard specifications found in the Works Information of this document, the project specifications take precedence. Any conflict, disagreement, omission, discrepancy, or any other such ambiguity in the specifications, bill of quantities or drawings that appear to the appointed Contractor must be brought to the attention of the Engineer for clarity.
- e) Precedence: In the event of any discrepancy between the Project Specifications (as found in this document and the drawings) and the Standard Specifications, the Project Specifications take precedence.
- f) The standards listed are binding and shall be the minimum requirements unless amendments are provided by the Engineer. See table below

SANS Code	Title	Applicable to
SANS 10400 Series	National Building Regulations (A-T)	Regulatory compliance
SANS 10400-S	Facilities for persons with disabilities	Access ramps
SANS 2001-CC1	Construction Works – Concrete Works (Structural)	Concrete works, General
SANS 2001-CC2	Construction Works – Concrete Works (Minor)	
SANS 10100-2	Structural use of concrete – Materials and execution of work	Concrete works
SANS 878	Ready-mixed concrete	Supply control
SANS 920	Steel reinforcing bars for concrete	Reinforcement
SANS 966-1	uPVC Specifications	Stormwater pipes
SANS 10104	Handrailing and balustrading	Safety barriers
SANS 1921 Series	Construction & Management Requirements	Contractor obligations & site control
SANS 10237	General Building Waterproofing	Waterproofing material/application standards

QUALITY CONTROL AND INSPECTION

- a) The Contractor shall notify the Engineer at least 48 hours in advance of each critical inspection stage.
- b) All works are subject to inspection and approval by the Engineer. An inspection checklist shall be completed and signed by both the Contractor and Engineer after each stage.
- c) Any defective work shall be rectified immediately at the Contractor's cost and re-inspected.

- d) Concrete Testing: Concrete works shall be tested in accordance with SANS 5861 (sampling and testing). A minimum of 3 cubes per 25m³ of concrete placed is required.
- e) Materials Certification: Steel reinforcement must be accompanied by mill certificates confirming compliance with SANS 920.
- f) Any deviation from the approved scope, drawings, or standards constitutes a variation. Variations must be documented, priced, and approved in writing prior to execution. Penalties will apply if variations cause schedule delays or quality issues.
- g) Contractor must submit to the Engineer the following documents for the approval of the engineer.
 - Inspection & Test Plans (ITPs)
 - Daily site diaries
 - Method statement for demolition and new works
 - Test results, compaction and concrete
 - Material delivery certificates

GENERAL SITE REQUIREMENTS

HEALTH, SAFETY, AND ENVIRONMENT (HSE)

- a) The contractor must sign a section 37.2 agreement supplied by NRF representative before commencement of works.
- b) The appointed contractor must submit a safety file to the NRF representative to check for compliance.
- c) All construction activities must comply with the Occupational Health and Safety Act (Act 85 of 1993) and the Construction Regulations, 2014.
- d) All personnel must wear appropriate PPE (safety helmets, steel-toed boots, high visibility vests, gloves, and eye protection).
- e) Contractor MUST implement measures to control dust, noise and environmental pollution in compliance with local by-laws.
- f) The contractor must also ensure pedestrian accommodation since this is the main entrance.

EXISTING SERVICES AND TEMPORARY WORKS

- a) All temporary works (scaffolding, formwork, falsework) must comply with SANS 2001 series and SANS 10085-2. They shall be inspected and signed off by a competent person before use. This includes site establishment, temporary barricading, temporary services (water and electricity), and setting out the work.
- b) Existing services and retaining walls adjacent to demolition areas must be protected. Any damages caused shall be reinstated to the Engineer's satisfaction.
- c) The site and surroundings are to be kept clean from building rubble, waste, etc. throughout the duration of the Contract. Roads used for transporting material shall be kept clean and dirt free on a daily basis. No separate payment will be made for this, and it will be deemed to be included in the rates tendered for the relevant items.

- d) Drawings provide approximate positions only. The Contractor is responsible for locating, safeguarding, and liaising with authorities for any existing services encountered. Damage caused by the Contractor's negligence must be repaired and reimbursed.
- e) Site establishment, including all temporary facilities as specified for the Contractor's staff as well as that of the Engineer.
- f) Provide temporary barricading and provide temporary fencing around the Contractor's campsite.
- g) Temporary services (water and electricity), the owner to provide connection points.
- h) Setting out the work.
- i) Management, monitoring, and reporting as prescribed in the Contract.

BIDDER MANDATORY RETAURNABLE DOCUMENTS

- 1) Bidder must submit a copy of a valid COIDA certificate from the department of employment and labor.
- 2) Bidder must submit a copy of a valid public liability insurance of a minimum amount of R500k or letter of intent to subscribe to an insurance provider as per the requirements stated in the bid document upon award?
- 3) Bidder must submit a list of a minimum of three contactable (must have email and cell/telephone number) references that will confirm bidder experience in civil engineering projects like the one detailed in this bid document. The NRF Reserves the right to contact these references and validate work experience submitted. In the event the references provided do not confirm work experience provided by the bidder, the bidder will be disqualified from the evaluation process

Note: Purchase orders will not be accepted as references.

Termination clause

NOTE: Notwithstanding any other provisions of this Agreement and in addition to the termination rights under the General Conditions of Contract (GCC), the NRF reserves the right to terminate this Agreement, in whole or in part, for operational reasons. Such reasons may include, but are not limited to, the adoption or implementation of an optimised, nationally sourced facilities management model or strategy aimed at improving efficiency, reducing costs, or aligning with national procurement directives or mandates. In the event of such termination, the NRF shall provide the Service Provider with not less than sixty (60) calendar days' written notice. The Service Provider shall not be entitled to claim any compensation or damages arising from such termination, save for payment due for services satisfactorily rendered up to the effective date of termination. The Service Provider shall take all reasonable steps to ensure an orderly handover and transition, including the provision of relevant documentation, records, and assistance as may be reasonably required by the Purchaser.

SETS OF QUOTATION DOCUMENTS REQUIRED	
Number of electronic bid documents for contract signing	1
Bidders must submit the above number of original documents in hard copy format (paper document) to the NRF. These serve as the original sets for the legal bid document and, upon award and signature, the legal contract document between the bidder and the NRF. (Where only one set is requested, this remains with the NRF). The bidders attach the originals or certified copies of any certificates stipulated in this document to these original sets of bid documents..	
Number of EVALUATION copies:	1 evaluation copy (electronic)
Bidders mark documents as “ Copy for evaluation ” and number all pages sequentially. Bidders mark the secured pdfs on the electronic storage medium as “ Copy for evaluation ”	
RETURNABLE DOCUMENTS CHECKLIST	
The bidder is to complete this table and to supply the necessary page references to the supporting documentation. A bidder failing to adequately provide any of the mandatory documents is automatically disqualified.	
Legislative/Technical Documents	Compliance

(M – Mandatory); (O – Optional)	Submitted	Bid Section Reference	Reference to Bidder's document
Bidder Eligibility			
Procurement Invitation (SBD 1), signed and completed including the SBD 4, 6.1 and signed Bid Submission Certificate form.	M	<input type="checkbox"/> Yes <input type="checkbox"/> No	Pages 1-38
A valid B-BBEE certificate or Sworn Affidavit	O	<input type="checkbox"/> Yes <input type="checkbox"/> No	
Specification Eligibility			
Pricing Documents	Compliance		
Pricing (SBD 3.1) in this document to be completed.	M	<input type="checkbox"/> Yes <input type="checkbox"/> No	Pages 4-8
Did bidder submit a copy of a valid COIDA certificate from the department of employment and labour.?	M	<input type="checkbox"/> Yes <input type="checkbox"/> No	
Did bidder submit a copy of a valid public liability insurance of a minimum amount of R500k or letter of intent to subscribe to an	M	<input type="checkbox"/> Yes <input type="checkbox"/> No	

(M – Mandatory); (O – Optional)	Submitted		Bid Section Reference	Reference to Bidder's document
insurance provider as per the requirements stated in the bid document upon award?				
Did bidder submit a list of a minimum of three contactable (must have email and cell/telephone number) references that will confirm bidder experience in civil engineering projects	M	<input type="checkbox"/> Yes <input type="checkbox"/> No		
Did bidder attend compulsory site briefing?	M	<input type="checkbox"/> Yes <input type="checkbox"/> No		

ELIGIBILITY CRITERIA (GO/NO-GO)

Selection Element		Meet Specification Minimum	Bid Section Reference	Reference to Bidder's document
1	Fully completed Procurement Invitation (SBD 1) including the SBD 4, 6.1 and signed Bid Submission Certificate form.	<input type="checkbox"/> YES <input type="checkbox"/> NO	Pages 1-38	
2	Completed Form of Offer and Acceptance	<input type="checkbox"/> YES <input type="checkbox"/> NO	Pages 20-23	
3	A valid B-BBEE certificate or Sworn Affidavit	<input type="checkbox"/> YES <input type="checkbox"/> NO		
4	Tax Compliance Status (TCS) Certificate or compliance tax status as per CSD verification or SARS PIN.	<input type="checkbox"/> YES <input type="checkbox"/> NO		
5	Proof of Registration on the Government's Central Supplier Database (CSD).	<input type="checkbox"/> YES <input type="checkbox"/> NO		
6	Did bidder submit a copy of a valid COIDA certificate from the department of employment and labour.?	<input type="checkbox"/> YES <input type="checkbox"/> NO		

Selection Element	Meet Specification Minimum	Bid Section Reference	Reference to Bidder's document
7 Did bidder submit a copy of a valid public liability insurance of a minimum amount of R500k or letter of intent to subscribe to an insurance provider as per the requirements stated in the bid document upon award?	<input type="checkbox"/> YES <input type="checkbox"/> NO		
8 Did bidder submit a list of a minimum of three contactable (must have email and cell/telephone number) references that will confirm bidder experience in the Civil engineering projects.	<input type="checkbox"/> YES <input type="checkbox"/> NO		
9 Did bidder attend compulsory site briefing?	<input type="checkbox"/> YES <input type="checkbox"/> NO		

SBD 3.1: PRICING DETAIL

Pricing Special Conditions

1	Pricing Schedule: In terms of <u>General Conditions of contract clause 17.1</u> , the price schedule remains unchanged for the duration of the contract with the NRF accepting no changes, extensions, or additional ad hoc costs to the pricing conditions of the contract with the exception of any price adjustments authorised in the Special Conditions of Contract for pricing set out below:
2	Firm Quantities over the Contract Period: The NRF requires firm set quantities during the current period with the time of delivery being determined during the contract period.
3	Estimated quantities over the Contract Period: The NRF may require further quantities during the current period with the actual quantity and time of delivery being determined when such quantities are needed. For bidding purposes and to establish the contract ceiling price, the NRF provides estimated quantities of what its requirements and estimated timing during the contract period for bidders to establish their pricing. The NRF does not provide guarantees or commitments that it will order this entire amount during the contract's life. The NRF, through the signed contract, guarantees its procurement of the specified goods and/or services is from the contracted party only.
4	Placement of written purchase orders for actual quantities ordered: The NRF manages the execution of this contract through the issue of written purchase orders – stipulating quantity, description, delivery date, and the unit price as set out in this contract - for the contracted supplies. The NRF, when issuing the written purchase order, guarantees that the funding is available.
5	Contract Ceiling Price: With these estimates in the bid contract, the contract ceiling price includes both the firm quantities and the potential future quantities within the contract ceiling price. The NRF manages the contract within the contract ceiling price by paying only for the verified

SBD 3.1: PRICING DETAIL

	deliveries/performances in terms of the clauses of this contract. The cumulative value of each of these invoices at the expiry of the contract is the actual total contract price.
6	Price Adjustments: In terms of <u>General Conditions of Contract clause 17.1</u> , the price adjustments with the rules for application are set out below as special conditions of <u>Contract Clause 17.1</u> . <u>Price adjustments and their corresponding rules are for the management of price risks on the basis of the NRF and the contracted bidder sharing the risk equally.</u>
7	Price quoted is South African Rands in terms of General Conditions of contract clause 16.4
8	Price Quotation Basis: Price quoted is fully inclusive of all costs including delivery to the specified NRF price delivery point and includes value- added tax, income tax, unemployment insurance fund contributions, and skills development levies in terms of General Conditions of contract clauses 12, 32.1 and 32.2. Price Delivery Point: In cases where different delivery points influence the pricing, the bidder submits a separate pricing schedule for each delivery point.
9	Detail Pricing Support: Detailed information e.g. costed bill of quantities is optional where not stated in the price schedule below and is provided as an annexure to the details included in this SBD 3
10	Application of Preference Points: Pricing is subject to the addition of Preference Points as stipulated below - Standard Bidding Document 6.1 Preference claim form

PRICING SCHEDULE

1. Bidder must use the bill of quantities provided with this bid document to give a detailed pricing, the total on each section of work must be indicated in the bill of quantities and the pricing schedule provided in the bid document.
2. Quantitative data in the DESCRIPTION section of the Bill of Quantities have been provided as guidelines and estimates only and cannot be used to motivate for a possible Contingency if they are not directly costed.
2. For all items the costs for transportation / delivery to site and installation / labour / supervision should be included in the quoted price

Failure to comply with the requirements stated above will disqualify the bid from the evaluation process.

DESCRIPTION/ (Reference to specific specification)	QTY	UNIT OF MEASURE	UNIT PRICE INCLUDING VAT	TOTAL PRICE INCLUSIVE OF VAT
1 PRELIMINARY & GENERAL ITEMS	No	Each		

DESCRIPTION/ (Reference to specific specification)		QTY	UNIT OF MEASURE	UNIT PRICE INCLUDING VAT	TOTAL PRICE INCLUSIVE OF VAT
	BILL NO. 1 : FIXED CHARGE ITEMS				
2	PRELIMINARY & GENERAL ITEMS BILL NO. 2: TIME RELATED ITEMS	No	Each		
3	DEMOLISH AND REMOVE INFRASTRUCTURE	No	Each		
5	EARTHWORKS	No	Each		
6	CONCRETE (STRUCTURAL)	No	Each		
7	STORMWATER DRAINAGE	No	Each		
8	REPAIR OF STRUCTURAL CONCRETE, CRACKS IN ACCORDANCE WITH THE ENGINEER'S SPECIFICATION+	No	Each		
TOTAL CONTRACT VALUE OF ABOVE (CEILING PRICE) INCLUSIVE OF 15% VAT				R	

CIDB STANDARD DOCUMENTS

C1.1 Form of Offer and Acceptance Offer

The Employer, identified in the Acceptance signature block, has solicited offers to enter into a contract for the procurement of

The tenderer, identified in the Offer signature block, has examined the documents listed in the Tender Data and addenda thereto as listed in the Returnable Schedules, and by submitting this Offer has accepted the Conditions of Tender.

The tenderer, identified in the Offer signature block, has examined the draft contract as listed in the Acceptance section and agreed to provide this Offer.

By the representative of the tenderer, deemed to be duly authorised, signing this part of this Form of Offer and Acceptance the tenderer offers to perform all of the obligations and liabilities of the Contractor under the contract including compliance with all its terms and conditions according to their true intent and meaning for an amount to be determined in accordance with the conditions of contract identified in the Contract Data.

THE OFFERED TOTAL OF THE PRICES INCLUSIVE OF VAT IS:

(in words)Rand;

R.....(in figures)

THE OFFERED COST PARAMETERS TO PROVIDE THE WORKS, EXCLUSIVE OF VALUE ADDED TAX, ARE AS SET IN THE CONTRACT DATA.

THE OFFERED PRICES ARE AS STATED IN THE PRICING SCHEDULE

This Offer may be accepted by the Employer by signing the Acceptance part of this Form of Offer and Acceptance and returning one copy of this document including the Schedule of Deviations (if any) to the tenderer before the end of the period of validity stated in the Tender Data, or other period as agreed,

whereupon the tenderer becomes the party named as the Contractor in the conditions of contract identified in the Contract Data.

This Offer may be accepted by the Employer by signing the Acceptance part of this Form of Offer and Acceptance and returning one copy of this document including the Schedule of Deviations (if any) to the tenderer before the end of the agreed period of validity, or other period as agreed, whereupon the tenderer becomes the party named as the Contractor in the conditions of contract identified in the Contract Data.

Signature(s)

Name(s)

Capacity

For the tenderer:

Name & signature of witness ()

Date.....

Certificate of Authority for Joint Ventures

This Returnable Schedule is to be completed by joint ventures.

We, the undersigned, are submitting this tender offer in Joint Venture and hereby authorise Mr/Ms

....., authorised signatory of the company

....., acting in the capacity of lead partner, to sign all documents in connection with the tender offer and any contract resulting from it on our behalf.

NAME OF FIRM	ADDRESS	DULY SIGNATORY	AUTHORISED
Lead partner CIDB registration no 		Signature..... Name Designation	
 CIDB registration no 		Signature..... Name Designation	
 CIDB registration no 		Signature..... Name Designation	

CIDB registration no		Signature. Name Designation
-------------------------------	--	--

GENERAL CONDITIONS OF CONTRACT

The National Research Foundation cannot amend the National Treasury's General Conditions of Contract (GCC). The National Research Foundation therefore appends Special Conditions of Contract (SCC) providing specific information relevant to a GCC clause to its the National Treasury's General Conditions of Contract The National Research Foundation has filed its General Conditions of Contract GCC) on its website (<http://www.nrf.ac.za/procurement/General-Conditions-of-Contract>). These form part of this document's contract conditions. Special Conditions specific to this bid contract are set out in this document.

The NRF deems the bidders to have accessed and read the General Conditions of Contract. Whenever there is an unintended conflict, the provisions of the Special Conditions of Contract shall prevail over the General Conditions of Contract.

SPECIAL CONDITIONS OF CONTRACT

(AMENDMENTS TO SPECIFIC CLAUSES OF THE GENERAL CONDITIONS OF CONTRACT LISTED BELOW EACH CLAUSE IN THAT SECTION).

1 **Service Provider Obligations:**

The service provider must exercise reasonable skill, care and diligence in rendering all services included in this procurement contract.

The service provider must deliver the services during normal working hours (i.e. Monday to Friday, excluding public holidays from 08h30 to 17h00) and/or such additional hours as may be reasonably required by the NRF due to the existence of special circumstances. Services rendered outside of these hours will only be rendered by mutual agreement with the nominated person of the NRF, based in severity level.

The service provider may not do anything that may prejudice or be adverse to the operations and functions of the NRF

The service provider must submit such information and reports, as specified in the agreed service request, to the person nominated by the NRF, and comply with all legislation applicable in providing these services.

The service provider corresponds and deliver services only to the NRF and end users of the NRF.

2 **Communication:** The contracted parties communicate in writing through mail, delivery, or email. The contracted party states the contract number and purchase order number, if the latter is applicable, on communication documentation. The contract party does not act upon any communication without the

SPECIAL CONDITIONS OF CONTRACT

contract number or must verify such communication with the assigned NRF contract manager prior to acting upon it.

- 3 **Occupational Health and Safety when working on NRF sites:** All personnel performing work on NRF site/s as part of this contract are responsible to obtain safety induction.

Over and above the obligations provided by the Occupational Health and Safety Act (OHS Act No 85 of 1993 and its Regulations, known as 'the Act'), the contracted party meets with all relevant health and safety instructions as given to them by site safety personnel, where relevant. Personal protection equipment including closed safety shoes, hard hats, height safety equipment, and high visibility vests are worn at all times while on the work site. All personnel are to obey the relevant instructions, including signage, related to restricted access and speed limits on all sites.

The contracted party, once signing the contract (SBD 7), is responsible for itself, its employees, and those people affected by its operations in terms of the Act the regulations promulgated in terms thereof. The contracted party performs all work and uses equipment on site complying with the provisions of the Act.

To this end, the contracted party shall make available to the NRF on the valid Letter of Good Standing in terms of the COID Act and ensures its validity does not expire while executing this bid, where applicable. The contracted party furnishes its registration number with the office of the Compensation Commissioner. The contracted party enters into a Section 37.2 agreement in terms of Occupational Health and Safety Act (OHS Act No 85 of 1993 and its Regulations) that the NRF drafts.

The contracted party maintains a health and safety plan complying with the requirements of The Act at the work site during the period that contracted work takes place on the site.

The NRF manages the contracted party in his capacity for the execution of this contract to meet the provisions of the said Act and the regulations promulgated in terms thereof. The contracted party accepts liability for any contraventions to the Act. Each member of the contracted party's team (including sub-contracted personnel), submit a signed indemnity form prior to entering the work site and kept in the contracted party's health and safety file.

MANAGEMENT OF PERFORMANCE LEVELS

1. The Performance Levels are in the table below.
2. The NRF measures the contracted bidder's performance against these performance levels in the execution of the contract.
3. The contracted bidder recognises that its failure to meet the performance levels has a material and adverse impact on the operations of NRF and that the damages from the contracted bidder's failure to meet any performance level is not susceptible to precise determination.
4. The NRF excuses the contracted bidder from failing to comply with the performance levels to the extent that non-performance or delayed performance is solely and directly attributable to an act or omission of the NRF or its staff or circumstances of force majeure as referred to in this Agreement.
5. If the contracted bidder fails to meet any performance level:

MANAGEMENT OF PERFORMANCE LEVELS

- the contracted bidder shall investigate and report on the root causes of the performance level failure; promptly correct the failure and begin meeting the set performance levels;
- advise the NRF as and to the extent requested by the NRF of the status of remedial efforts being undertaken with respect to such performance level failure; and
- take appropriate preventative measures to prevent the recurrence of the performance level failure.

6. Both parties are responsible for monitoring and measuring the performance of the contracted bidder against the performance levels set in this document. The NRF deems failure by the contracted bidder to measure performance with respect to the contract specifications for any measurement period, as a failure to meet the stipulated performance levels.

PERFORMANCE LEVELS STATEMENT

Service/Goods being Measured	Measurement Methodology	Penalty/Bonus and level applicable from
Demolition and reconstruction	<p>1.Demolish the existing entrance staircase and dismantle associated components without causing damage to adjacent structure, utilities, or finishes beyond the defined scope.</p> <p>2.Excavate and construct a new entrance staircase in accordance with the approved architectural/structural drawings and SANS10400 and all stated Standards in the document compliance requirements, including dimensions, riser and going, handrails, nosings, treads, landings, and non-slip finishes.</p> <p>3. Reconstruct or modify the wheelchair access ramp to meet accessible design criteria per SANS10400 and local accessibility regulations (including gradient, landings, handrails, edge protection, and anti-slip surfaces).</p> <p>4.All components (stringers, treads, risers, landings, handrails, balustrades, bollards, drainage connections) must be installed plumb, square, and level within tolerances defined in the technical specs.</p> <p>5.Demolition waste and excavations are removed from site in a timely manner and disposed of legally in accordance with waste management plans.</p>	<p><i>1ST OFFENCE:</i> Contractor Will Be Notified in writing to correct the non-compliance at their own cost.</p> <p><i>2nd OFFENCE:</i> Contractor Will Be Notified in writing to correct the non-compliance at their own cost, failure will trigger GCC CLAUSE 25 WILL BE AFFECTED.</p> <p><i>3RD OFFENCE:</i> A penalty of 5% deduction on the total invoice amount.</p>

Service/Goods being Measured	Measurement Methodology	Penalty/Bonus and level applicable from
Quality and workmanship	Inspections will be conducted by NRF appointed engineer together with contractor	Material or workmanship non-conformances (as defined by the contract specs, drawings, and approved standards) identified during inspections or commissioning shall trigger a corrective action period. If corrective actions are not completed within the specified timeframe, If corrective actions are not completed within the specified timeframe, GCC Clause 25 will be affected.

SBD 4 BIDDER'S DISCLOSURE

1. PURPOSE OF THE FORM

Any person (natural or juristic) may make an offer or offers in terms of this invitation to bid. In line with the principles of transparency, accountability, impartiality, and ethics as enshrined in the Constitution of the Republic of South Africa and further expressed in various pieces of legislation, it is required for the bidder to make this declaration in respect of the details required hereunder.

Where a person/s are listed in the Register for Tender Defaulters and / or the List of Restricted Suppliers, that person will automatically be disqualified from the bid process.

2. Bidder's declaration

- 2.1 Is the bidder, or any of its directors / trustees / shareholders / members / partners or any person having a controlling interest¹ in the enterprise,

¹ the power, by one person or a group of persons holding the majority of the equity of an enterprise, alternatively, the person/s having the deciding vote or power to influence or to direct the course and decisions of the enterprise.

employed by the state?

YES/NO

- 2.1.1 If so, furnish particulars of the names, individual identity numbers, and, if applicable, state employee numbers of sole proprietor/ directors / trustees / shareholders / members/ partners or any person having a controlling interest in the enterprise, in table below.

Full Name	Identity Number	Name of State institution

- 2.2 Do you, or any person connected with the bidder, have a relationship with any person who is employed by the procuring institution?

YES/NO

- 2.2.1 If so, furnish particulars:

.....
.....

- 2.3 Does the bidder or any of its directors / trustees / shareholders / members / partners or any person having a controlling interest in the enterprise have any interest in any other related enterprise whether or not they are bidding for this contract?

YES/NO

2.3.1 If so, furnish particulars:

.....
.....

3 DECLARATION

I, the undersigned, (name)..... in submitting the accompanying bid, do hereby make the following statements that I certify to be true and complete in every respect:

- 3.1 I have read and I understand the contents of this disclosure;
- 3.2 I understand that the accompanying bid will be disqualified if this disclosure is found not to be true and complete in every respect;
- 3.3 The bidder has arrived at the accompanying bid independently from, and without consultation, communication, agreement or arrangement with any competitor. However, communication between partners in a joint venture or consortium² will not be construed as collusive bidding.
- 3.4 In addition, there have been no consultations, communications, agreements or arrangements with any competitor regarding the quality, quantity, specifications, prices, including methods, factors or formulas used to calculate prices, market allocation, the intention or decision to submit or not to submit the bid, bidding with the intention not to win the bid and conditions or delivery particulars of the products or services to which this bid invitation relates.
- 3.4 The terms of the accompanying bid have not been, and will not be, disclosed by the bidder, directly or indirectly, to any competitor, prior to the date and time of the official bid opening or of the awarding of the contract.
- 3.5 There have been no consultations, communications, agreements or arrangements made by the bidder with any official of the procuring institution in relation to this procurement process prior to and during the bidding process except to provide clarification on the bid submitted where so required by the institution; and the bidder was not involved in the drafting of the specifications or terms of reference for this bid.

² Joint venture or Consortium means an association of persons for the purpose of combining their expertise, property, capital, efforts, skill and knowledge in an activity for the execution of a contract.

3.6 I am aware that, in addition and without prejudice to any other remedy provided to combat any restrictive practices related to bids and contracts, bids that are suspicious will be reported to the Competition Commission for investigation and possible imposition of administrative penalties in terms of section 59 of the Competition Act No 89 of 1998 and or may be reported to the National Prosecuting Authority (NPA) for criminal investigation and or may be restricted from conducting business with the public sector for a period not exceeding ten (10) years in terms of the Prevention and Combating of Corrupt Activities Act No 12 of 2004 or any other applicable legislation.

I CERTIFY THAT THE INFORMATION FURNISHED IN PARAGRAPHS 1, 2 and 3 ABOVE IS CORRECT.

I ACCEPT THAT THE STATE MAY REJECT THE BID OR ACT AGAINST ME IN TERMS OF PARAGRAPH 6 OF PFMA SCM INSTRUCTION 03 OF 2021/22 ON PREVENTING AND COMBATING ABUSE IN THE SUPPLY CHAIN MANAGEMENT SYSTEM SHOULD THIS DECLARATION PROVE TO BE FALSE.

.....

Signature

.....

Date

.....

Position

.....

Name of bidder

PREFERENCE POINTS CLAIMED (SBD 6.1)

PREFERENCE POINTS CLAIM FORM IN TERMS OF THE PREFERENTIAL PROCUREMENT REGULATIONS 2022

This preference form must form part of all tenders invited. It contains general information and serves as a claim form for preference points for specific goals.

NB: BEFORE COMPLETING THIS FORM, TENDERERS MUST STUDY THE GENERAL CONDITIONS, DEFINITIONS AND DIRECTIVES APPLICABLE IN RESPECT OF THE TENDER AND PREFERENTIAL PROCUREMENT REGULATIONS, 2022

PREFERENCE POINTS CLAIMED (SBD 6.1)

1. GENERAL CONDITIONS

1.1 The following preference point systems are applicable to invitations to tender:

- the 80/20 system for requirements with a Rand value of up to R50 000 000 (all applicable taxes included); and
- the 90/10 system for requirements with a Rand value above R50 000 000 (all applicable taxes included).

1.2 To be completed by the organ of state

- a) The applicable preference point system for this tender is the **80/20** preference point system.
- b) The **80/20 preference point system** will be applicable in this tender. The lowest/ highest acceptable tender will be used to determine the accurate system once tenders are received.

1.3 Points for this tender (even in the case of a tender for income-generating contracts) shall be awarded for:

- (a) Price; and
- (b) Specific Goals.

1.4 To be completed by the organ of state:

The maximum points for this tender are allocated as follows:

	POINTS
PRICE	80
SPECIFIC GOALS	20
Total points for Price and SPECIFIC GOALS	100

1.5 Failure on the part of a tenderer to submit proof or documentation required in terms of this tender to claim points for specific goals with the tender, will be interpreted to mean that preference points for specific goals are not claimed.

1.6 The organ of state reserves the right to require of a tenderer, either before a tender is adjudicated or at any time subsequently, to substantiate any claim in regard to preferences, in any manner required by the organ of state.

PREFERENCE POINTS CLAIMED (SBD 6.1)

2. DEFINITIONS

- (a) **“tender”** means a written offer in the form determined by an organ of state in response to an invitation to provide goods or services through price quotations, competitive tendering process or any other method envisaged in legislation;
- (b) **“price”** means an amount of money tendered for goods or services, and includes all applicable taxes less all unconditional discounts;
- (c) **“rand value”** means the total estimated value of a contract in Rand, calculated at the time of bid invitation, and includes all applicable taxes;
- (d) **“tender for income-generating contracts”** means a written offer in the form determined by an organ of state in response to an invitation for the origination of income-generating contracts through any method envisaged in legislation that will result in a legal agreement between the organ of state and a third party that produces revenue for the organ of state, and includes, but is not limited to, leasing and disposal of assets and concession contracts, excluding direct sales and disposal of assets through public auctions; and
- (e) **“the Act”** means the Preferential Procurement Policy Framework Act, 2000 (Act No. 5 of 2000).

3. FORMULAE FOR PROCUREMENT OF GOODS AND SERVICES

3.1. POINTS AWARDED FOR PRICE

3.1.1 THE 80/20 PREFERENCE POINT SYSTEMS

A maximum of 80 points is allocated for price on the following basis:

80/20

$$Ps = 80 \left(1 - \frac{Pt - Pmin}{Pmin} \right)$$

- Ps = Points scored for price of tender under consideration
- Pt = Price of tender under consideration
- Pmin = Price of lowest acceptable tender

3.2. FORMULAE FOR DISPOSAL OR LEASING OF STATE ASSETS AND INCOME GENERATING PROCUREMENT

PREFERENCE POINTS CLAIMED (SBD 6.1)

3.2.1. POINTS AWARDED FOR PRICE

A maximum of 80 or 90 points is allocated for price on the following basis:

80/20

or

90/10

$$Ps = 80 \left(1 + \frac{Pt - P_{max}}{P_{max}} \right) \quad \text{or} \quad Ps = 90 \left(1 + \frac{Pt - P_{max}}{P_{max}} \right)$$

Where

Ps = Points scored for price of tender under consideration

Pt = Price of tender under consideration

Pmax = Price of highest acceptable tender

POINTS AWARDED FOR SPECIFIC GOALS

- 4.1. In terms of Regulation 4(2); 5(2); 6(2) and 7(2) of the Preferential Procurement Regulations, preference points must be awarded for specific goals stated in the tender. For the purposes of this tender the tenderer will be allocated points based on the goals stated in table 1 below as may be supported by proof/ documentation stated in the conditions of this tender:
- 4.2. In cases where organs of state intend to use Regulation 3(2) of the Regulations, which states that, if it is unclear whether the 80/20 or 90/10 preference point system applies, an organ of state must, in the tender documents, stipulate in the case of—
- (a) an invitation for tender for income-generating contracts, that either the 80/20 or 90/10 preference point system will apply and that the highest acceptable tender will be used to determine the applicable preference point system; or
 - (b) any other invitation for tender, that either the 80/20 or 90/10 preference point system will apply and that the lowest acceptable tender will be used to determine the applicable preference point system,
- then the organ of state must indicate the points allocated for specific goals for both the 90/10 and 80/20 preference point system.

Table 1: Specific goals for the tender and points claimed are indicated per the table below.

(Note to organs of state: Where either the 90/10 or 80/20 preference point system is applicable, corresponding points must also be indicated as such.)

PREFERENCE POINTS CLAIMED (SBD 6.1)

Note to tenderers: The tenderer must indicate how they claim points for each preference point system.)

NRF will use the B-BBEE status level scoring table

Preference points are allocated to both procurement and income-generation based on the two different thresholds in terms of the table below:

The specific goals allocated points in terms of this tender: B-BBEE Status Level of Contributor	Number of points allocated (80/20 system)	Number of points claimed (80/20 system) (To be completed by the tenderer)
1	20	
2	18	
3	14	
4	12	
5	8	
6	6	
7	4	
8	2	
Non-compliant	0	

DECLARATION WITH REGARD TO COMPANY/FIRM

4.3. Name of company/firm.....

4.4. Company registration number:

PREFERENCE POINTS CLAIMED (SBD 6.1)

4.5. TYPE OF COMPANY/ FIRM

- ☐ Partnership/Joint Venture / Consortium
- ☐ One-person business/sole propriety
- ☐ Close corporation
- ☐ Public Company
- ☐ Personal Liability Company
- ☐ (Pty) Limited
- ☐ Non-Profit Company
- ☐ State Owned Company

[TICK APPLICABLE BOX]

4.6. I, the undersigned, who is duly authorised to do so on behalf of the company/firm, certify that the points claimed, based on the specific goals as advised in the tender, qualifies the company/ firm for the preference(s) shown and I acknowledge that:

- i) The information furnished is true and correct;
- ii) The preference points claimed are in accordance with the General Conditions as indicated in paragraph 1 of this form;
- iii) In the event of a contract being awarded as a result of points claimed as shown in paragraphs 1.4 and 4.2, the contractor may be required to furnish documentary proof to the satisfaction of the organ of state that the claims are correct;
- iv) If the specific goals have been claimed or obtained on a fraudulent basis or any of the conditions of contract have not been fulfilled, the organ of state may, in addition to any other remedy it may have –
 - (a) disqualify the person from the tendering process;
 - (b) recover costs, losses or damages it has incurred or suffered as a result of that person's conduct;
 - (c) cancel the contract and claim any damages which it has suffered as a result of having to make less favourable arrangements due to such cancellation;
 - (d) recommend that the tenderer or contractor, its shareholders and directors, or only the shareholders and directors who acted on a fraudulent basis, be restricted from obtaining business from any organ of state for a period not

PREFERENCE POINTS CLAIMED (SBD 6.1)

exceeding 10 years, after the *audi alteram partem* (hear the other side) rule has been applied; and

- (e) forward the matter for criminal prosecution, if deemed necessary.

.....
SIGNATURE(S) OF TENDERER(S)

SURNAME AND NAME:

DATE:

ADDRESS:

.....

.....

.....

BID SUBMISSION CERTIFICATE FORM - (SBD 1)

I hereby undertake to supply all or any of the goods, works, and services described in this procurement invitation to the NRF in accordance with the requirements and specifications stipulated in this Bid Invitation document at the price/s quoted.

BID SUBMISSION CERTIFICATE FORM - (SBD 1)

My offer remains binding upon me and open for acceptance by the NRF during the validity period indicated and calculated from the closing time of Bid Invitation.

The following documents are deemed to form and be read and construed as part of this offer / bid even where integrated in this document:

Invitation to Bid (SBD 1)	Specification(s) set out in this Quotation Invitation inclusive of any annexures thereto
Bidder's responses to this invitation as attached to this document	Pricing Schedule(s) (SBD3.1) including detailed schedules attached
(SBD 6.1) Preference points claim form in terms of the Preferential Procurement Regulations 2022	
Declaration of Interest (SBD4)	General Conditions of Contract and special/additional conditions of contract as set out in this document

I confirm that I have satisfied myself as to the correctness and validity of my offer / bid in response to this Bid Invitation; that the price(s) and rate(s) quoted cover all the goods, works and services specified in the Bid Invitation and cover all my obligations and I accept that any mistakes regarding price(s) and rate(s) and calculations will be at my own risk.

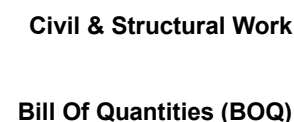
I accept full responsibility for the proper execution and fulfilment of all obligations and conditions devolving on me in terms of this Bid Invitation as the principal liable for the due fulfilment of the subsequent contract if awarded to me.

I declare that I have had no participation in any collusive practices with any Bidder or any other person regarding this or any other Bid.

I certify that the information furnished in these declarations (SBD 3.1, SBD 4, SBD 6.1) is correct and I accept that the NRF may reject the Bid or act against me should these declarations prove to be false.

I confirm that I am duly authorised to sign this offer/ bid response.

NAME (PRINT)	
CAPACITY	
SIGNATURE	
WITNESS 1	
NAME	
SIGNATURE	
WITNESS 2	
NAME	
SIGNATURE	
DATE	

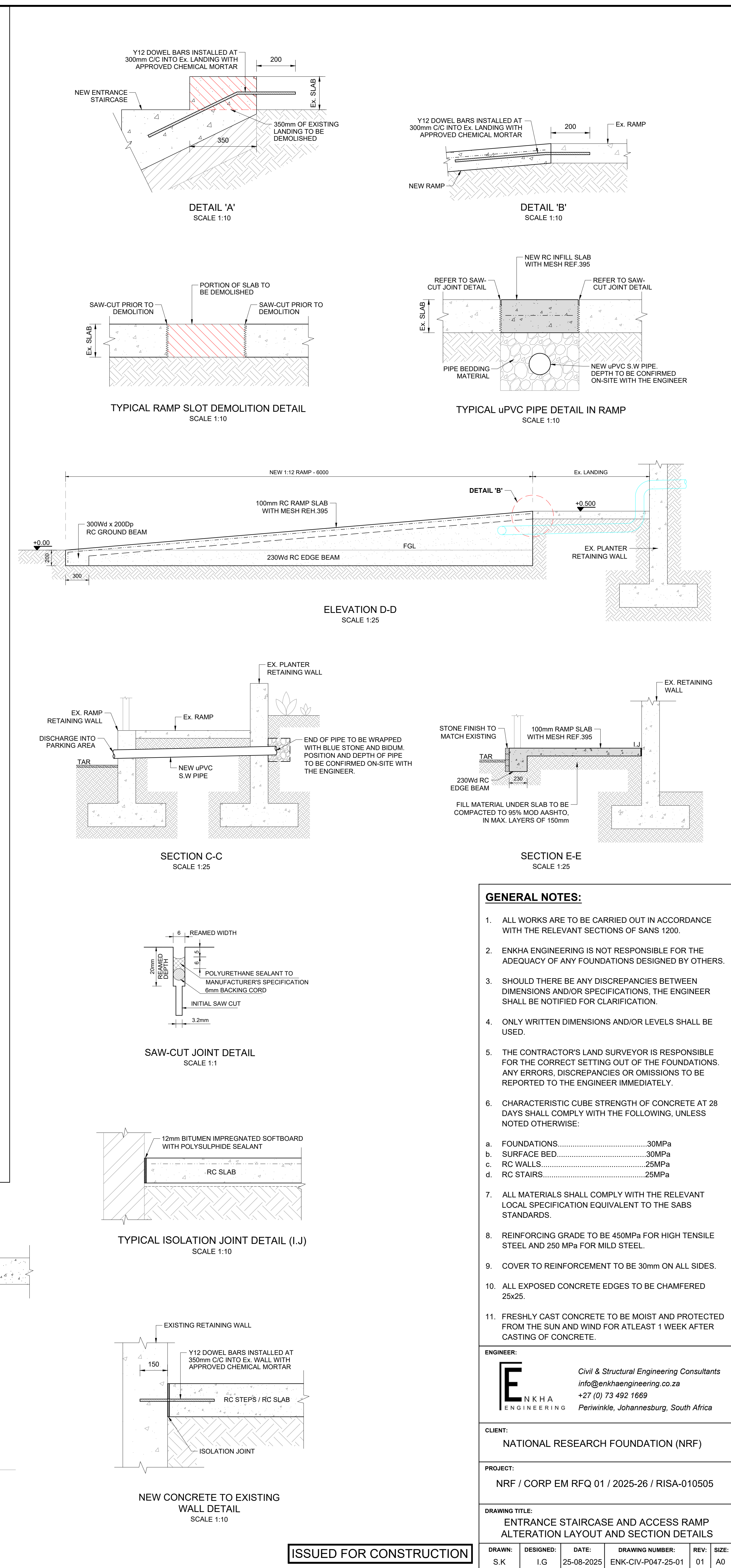


SANS Pay Ref	Description	Unit	Quantity	Rate	Amount
SANS 1200C 11	<p><u>REPAIR OF STRUCTURAL CONCRETE, CRACKS IN ACCORDANCE WITH THE ENGINEER'S SPECIFICATION</u></p> <p>(a) Contractor to refer to the civil and structural works specification document and associated remedial works drawings when carrying out the remedial works</p> <p>(b) Saw cutting concrete (where required), to edges prior to demolition to prevent overbreak</p> <p>(c) Rates shall include for curing and making good after setting of concrete (where applicable)</p> <p>(d) All remedial works products to be applied in strict accordance with manufacturer's specifications</p> <p>(e) Proprietary products shall be used as specified. Substitute products of similar quality and specification may only be used with prior approval by the Engineer.</p> <p>(f) To be expended only on the written instruction of the Engineer</p> <p><u>REPAIR CONCRETE SPALLING AND OTHER SIMILAR CONCRETE DAMAGES</u></p> <p>The deteriorated concrete should be removed around the reinforcement bars and give a minimum of 50mm clearance around the exposed reinforcement.</p> <p>The removed concrete should be extended along the length of the bar until at least 100mm of sound sections of reinforced concrete are exposed.</p> <p>The edges of the cut concrete should be trimmed in neat dimensions to a minimum of 20mm saw cut to avoid feather edging when the repair concrete is applied.</p> <p>The reinforcement should be thoroughly blast cleaned to provide a bright clear surface and ensure all corrosion is removed.</p> <p>To achieve an adequate final outer cover, the reinforcement must be pushed into the cavity to ensure at least a final 30mm cover is achieved.</p> <p>The reinforcement must be painted with an epoxy-based zinc rich primer such as SikaCor Zinc R from Sika, Pro-Struct 688 from StonCor, or similar approved and the primer to be applied according to the manufacturer's specifications.</p> <p>The concrete must be reinstated and re-profiled using a proprietary repair grout or mortar such as Sika MonoTop-412 NFG, Pro-Struct 531 or similar approved.</p> <p>A wet to dry epoxy must be used at the interface of the old concrete and new repair grout. Once the concrete has been re-profiled, it must be allowed to cure.</p> <p>Contractor or specialist's rate for carrying out remedial works in accordance to the Engineer's specification stipulated in this section. Item to be expended only on the written instruction of the Engineer</p> <p><u>REPAIR WATER DAMAGE ON CONCRETE</u></p>	Note			
		m ²	R	-	Rate Only

	Identify and fix water ingress and water damage. Identified damages to be reviewed and approved by the engineer. Item to be expended only on the written instruction of the Engineer	m ²	R	-	Rate Only
	<u>PRE-WATER PROOFING REPAIRS</u>				
	<u>Inspection and preparation: Identify and locate areas of defective concrete, mark out and prepare working area</u>	Note			
	Contractor or specialist's rate for carrying out pre-water proofing installation remedial works in accordance to manufacturer's instruction. Item to be expended only on the written instruction of the Engineer	m ²	R	-	Rate Only
	<u>Cut out and removal of damaged concrete sections to sound substrate to expose reinforcement as directed by Engineer for partial structural repairs</u>	Note			Rate Only
	Contractor or specialist's rate for carrying out pre-water proofing installation remedial works in accordance to manufacturer's instruction. Item to be expended only on the written instruction of the Engineer	m ²	R	-	
SANS 1200 HE 5	<u>Preparation of exposed steel reinforcement: Clean, remove corrosion, apply anti-corrosion primer</u>	Note			
	Contractor or specialist's rate for carrying out pre-water proofing installation remedial works in accordance to manufacturer's instruction. Item to be expended only on the written instruction of the Engineer	m ²	R	-	Rate Only
SANS 1200G	<u>Concrete substrate preparation: Clean, roughen, remove contaminants, prepare for repair mortar bonding</u>	Note			
	Contractor or specialist's rate for carrying out pre-water proofing installation remedial works in accordance to manufacturer's instruction. Item to be expended only on the written instruction of the Engineer	m ²	R	-	Rate Only
	<u>Apply bonding agent / primer to prepared substrate: As per manufacturer specification</u>	Note			
	Contractor or specialist's rate for carrying out pre-water proofing installation remedial works in accordance to manufacturer's instruction. Item to be expended only on the written instruction of the Engineer	m ²	R	-	Rate Only
	<u>Repair mortar application: Supply and apply SANS approved structural repair mortar (hand or spray applied)</u>	Note			
	Contractor or specialist's rate for carrying out pre-water proofing installation remedial works in accordance to manufacturer's instruction. Item to be expended only on the written instruction of the Engineer	m ²	R	-	Rate Only
	<u>Crack repairs - Routing: Rout cracks to required width and depth</u>	Note			
	Contractor or specialist's rate for carrying out pre-water proofing installation remedial works in accordance to manufacturer's instruction. Item to be expended only on the written instruction of the Engineer	m	R	-	Rate Only
	<u>Crack repairs - Injection: Inject cracks with the approved expoy or polyurethane resin</u>	Note			
	Contractor or specialist's rate for carrying out pre-water proofing installation remedial works in accordance to manufacturer's instruction. Item to be expended only on the written instruction of the Engineer	m	R	-	Rate Only
	<u>Surface sealing of cracks: with flexible sealant to maintain watertightness</u>	Note			
	Contractor or specialist's rate for carrying out pre-water proofing installation remedial works in accordance to manufacturer's instruction. Item to be expended only on the written instruction of the Engineer	m	R	-	Rate Only

	<p><u>Finishing:</u> Shape and finish repairs to match adjacent surfaces</p> <p>Contractor or specialist's rate for carrying out pre-water proofing installation remedial works in accordance to manufacturer's instruction. Item to be expended only on the written instruction of the Engineer</p> <p><u>Curing or repairs:</u> Using approved curing compound or wet curing method</p> <p>Contractor or specialist's rate for carrying out pre-water proofing installation remedial works in accordance to manufacturer's instruction. Item to be expended only on the written instruction of the Engineer</p> <p>Protective coating: Apply anti-carbonation coating to repaired concrete surfaces</p> <p>Contractor or specialist's rate for carrying out pre-water proofing installation remedial works in accordance to manufacturer's instruction. Item to be expended only on the written instruction of the Engineer</p>	<p>Note</p> <p>m²</p> <p>Note</p> <p>m²</p> <p>m²</p> <p>m²</p>		<p>R</p> <p>R</p> <p>R</p> <p>R</p>	<p>-</p> <p>-</p> <p>-</p> <p>-</p>	<p>Rate Only</p> <p>Rate Only</p> <p>Rate Only</p> <p>Rate Only</p>
	CARRIED FORWARD TO SUMMARY					R -

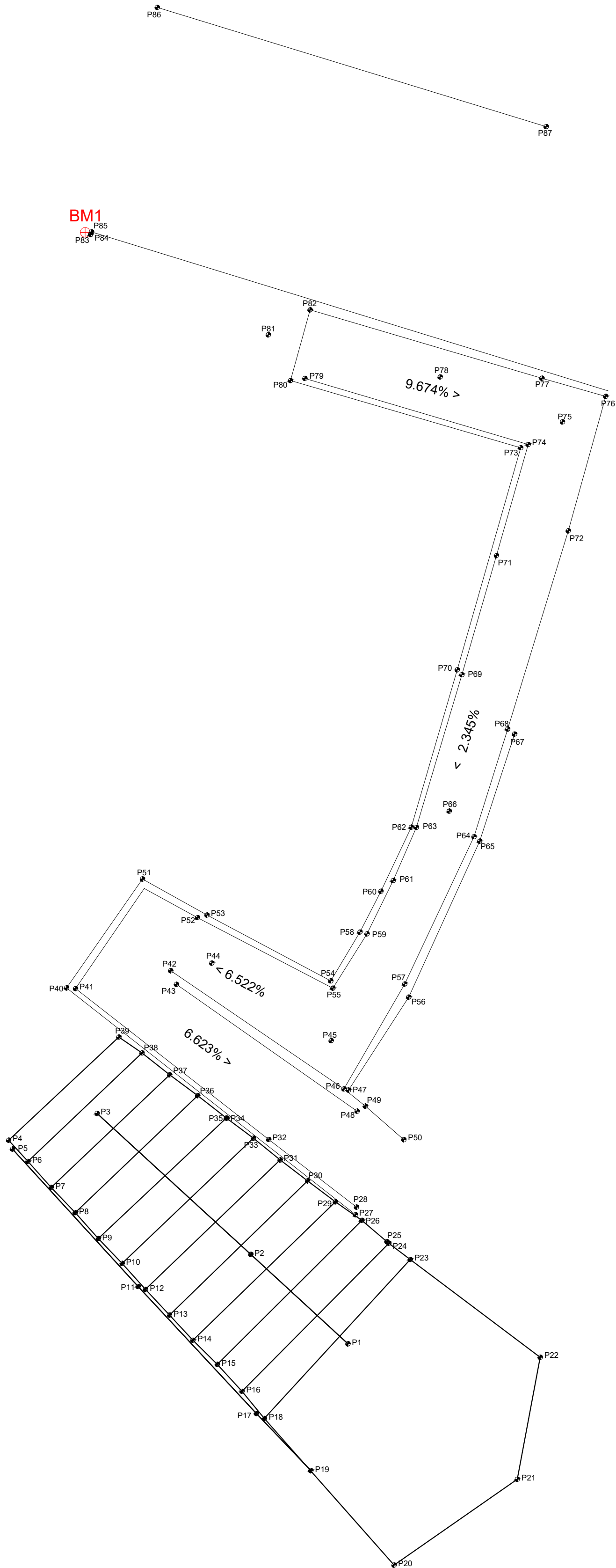
MEMBER		No OF	BARS PER MEMB	DIA.	LENGTH		TOTAL NUM- BER	MARK	S C	B E N D I N G					
										A	B	C	D	E/r	
Stair Rebar		1	17	R8	1500	17	SA	60	390	290	(2150) (230) (1840) (780) (750)	1460 863			
			17	Y10	4050	17	01	48	250	1620					
			17	Y10	1150	17	02	62	900	810					
			20	Y10	4550	20	03	41	770	1950					
			20	Y10	2650	20	04	62	1870	830					
			37	Y10	1300	37	05	62	550	240					
			4	Y12	3200	4	06	20	(3220)						
Lacing Bars			8	Y10	3250	8	07	20	(3250)						
			26	Y10	3500	26	08	20	(3500)						
			10	Y10	3800	10	09	20	(3830)						
			24	Y10	4050	24	10	20	(4040)						
			10	Y10	4400	10	11	20	(4390)						
Dowels			16	Y12	700	16	12	62	430	190	(270)				
Nosing Rebar			268	Y10	1050	268	13	99	120	260	530				
Ramp Rebar		1	7	R8	900	7	SB	60	140	240					
			6	R8	850	6	SC	60	170	170					
			6	R8	1000	6	SD	60	170	240					
			6	R8	1150	6	SE	60	170	330					
			6	R8	1300	6	SF	60	170	400					
			6	R8	1450	6	SG	60	170	480					
			6	R8	1600	6	SH	60	170	560					
			2	Y10	5950	2	14	20	(5940)						
			2	Y10	5900	2	15	20	(5900)						
			2	Y10	4700	2	16	20	(4700)						
			4	Y10	1250	4	17	20	(1270)						
			Dowel Bars			5	Y12	700	5	18	20	(700)			
			Stools			30	R10	950	30	ST1	83	300	60	300	(300)
	8	10	12	16	20	25	32	40	TOT	Date	2025/08/25				
R	30	18							48	Det. by	S.K				
Y		553	24						577	Ref Dwg	ENK-RL-P047-001				
TOT	30	570	24						624	Job No	P047				
<div><div>E</div><div>ENKHA ENGINEERING</div></div>					NATIONAL RESEARCH FOUNDATION ENTRANCE STAIR AND ACCESS RAMP REINFORCING SCHEDULE					Revision		01			
										Schedule No		BS001			



BM2

Y: 72570
X: 2849970

BM3



SITE SURVEY OF ENTRANCE STAIRCASE AND ACCESS RAMP
SCALE 1:75

POINTS			
DESCRIPTION	Y	X	Z
P1	72 556.893	2 849 980.903	1410.779
P2	72 558.954	2 849 979.008	1410.006
P3	72 562.213	2 849 976.019	1408.935
P4	72 564.090	2 849 976.587	1408.761
P5	72 564.007	2 849 976.775	1409.098
P6	72 563.680	2 849 977.037	1408.939
P7	72 563.188	2 849 977.589	1409.125
P8	72 562.678	2 849 978.123	1409.314
P9	72 562.188	2 849 978.672	1409.502
P10	72 561.683	2 849 979.198	1409.640
P11	72 561.346	2 849 979.688	1410.066
P12	72 561.190	2 849 979.747	1409.826
P13	72 560.677	2 849 980.294	1409.984
P14	72 560.182	2 849 980.828	1410.153
P15	72 559.666	2 849 981.338	1410.410
P16	72 559.140	2 849 981.909	1410.464
P17	72 558.837	2 849 982.379	1410.901
P18	72 558.669	2 849 982.484	1410.523
P19	72 557.681	2 849 983.590	1411.012
P20	72 555.916	2 849 985.592	1410.522
P21	72 553.304	2 849 983.774	1410.812
P22	72 552.817	2 849 981.189	1410.808
P23	72 555.573	2 849 979.114	1410.819
P24	72 556.026	2 849 978.773	1410.627
P25	72 556.068	2 849 978.737	1410.700
P26	72 556.598	2 849 978.285	1410.765
P27	72 556.733	2 849 978.165	1410.501
P28	72 556.712	2 849 978.005	1410.499
P29	72 557.161	2 849 977.893	1410.424
P30	72 557.750	2 849 977.448	1410.179
P31	72 558.332	2 849 977.003	1409.907
P32	72 558.574	2 849 976.571	1410.306
P33	72 558.900	2 849 976.543	1409.686
P34	72 559.463	2 849 976.123	1409.454
P35	72 559.473	2 849 976.116	1409.482
P36	72 560.081	2 849 975.641	1409.360
P37	72 560.675	2 849 975.201	1409.175
P38	72 561.263	2 849 974.736	1409.005
P39	72 561.754	2 849 974.399	1408.793
P40	72 562.861	2 849 973.359	1410.014
P41	72 562.672	2 849 973.371	1409.999
P42	72 560.653	2 849 972.995	1409.986
P43	72 560.532	2 849 973.283	1410.019
P44	72 559.784	2 849 972.833	1409.967
P45	72 557.250	2 849 974.477	1409.705
P46	72 556.979	2 849 975.500	1409.696
P47	72 556.882	2 849 975.525	1409.841
P48	72 556.700	2 849 975.971	1410.439
P49	72 556.527	2 849 975.864	1410.397
P50	72 555.708	2 849 976.575	1410.480

POINTS			
DESCRIPTION	Y	X	Z
P51	72 561.252	2 849 971.051	1410.090
P52	72 560.083	2 849 971.869	1410.029
P53	72 559.884	2 849 971.814	1410.007
P54	72 557.259	2 849 973.209	1409.730
P55	72 557.213	2 849 973.364	1409.731
P56	72 555.604	2 849 973.554	1409.730
P57	72 555.689	2 849 973.275	1409.644
P58	72 556.641	2 849 972.176	1409.706
P59	72 556.490	2 849 972.213	1409.670
P60	72 556.194	2 849 971.311	1409.634
P61	72 555.936	2 849 971.084	1409.593
P62	72 555.552	2 849 969.951	1409.479
P63	72 555.442	2 849 969.955	1409.484
P64	72 554.222	2 849 970.152	1409.668
P65	72 554.101	2 849 970.249	1409.946
P66	72 554.747	2 849 969.611	1409.549
P67	72 553.361	2 849 967.979	1410.030
P68	72 553.505	2 849 967.872	1409.734
P69	72 554.478	2 849 966.719	1409.465
P70	72 554.576	2 849 966.615	1409.464
P71	72 553.745	2 849 964.194	1409.360
P72	72 552.221	2 849 963.670	1409.338
P73	72 553.229	2 849 961.909	1409.325
P74	72 553.071	2 849 961.839	1409.317
P75	72 552.345	2 849 961.361	1409.325
P76	72 551.428	2 849 960.821	1409.328
P77	72 552.779	2 849 960.436	1409.323
P78	72 554.939	2 849 960.410	1409.080
P79	72 557.807	2 849 960.440	1408.730
P80	72 558.113	2 849 960.486	1408.684
P81	72 558.582	2 849 959.517	1408.629
P82	72 557.698	2 849 958.986	1408.696
P83	72 562.352	2 849 957.391	1408.363
P84	72 562.352	2 849 957.384	1408.365
P85	72 562.332	2 849 957.335	1408.363
P86	72 560.939	2 849 952.577	1408.425
P87	72 552.690	2 849 955.102	1407.550

GENERAL NOTES:

- ALL WORKS ARE TO BE CARRIED OUT IN ACCORDANCE WITH THE RELEVANT SECTIONS OF SANS 1200.
- SHOULD THERE BE ANY DISCREPANCIES BETWEEN DIMENSIONS AND/OR SPECIFICATIONS, THE ENGINEER SHALL BE NOTIFIED FOR CLARIFICATION.
- ONLY WRITTEN DIMENSIONS AND/OR LEVELS SHALL BE USED.
- SURVEY INFORMATION SHOWN WAS PREPARED BY SURVCON PROJECTS (PTY) LTD. THE RESPONSIBILITY AND LIABILITY FOR THE ACCURACY AND CORRECTNESS OF THE SURVEY RESTS SOLELY WITH SURVCON PROJECTS (PTY) LTD.

LEGEND			
	BENCHMARK		
	RETURNING WALL		
	RAMP		
	RAMP GUIDE		
	STAIRS		
	STAIRS GUIDE		
BENCHMARK CO-ORDINATES			
NAME	CO-ORDINATES System WGS 29P	X	Z
	± 0.00	+ 2 800 000.00	
BM1	72 562.35	+ 49 957.39	1408.36
BM2	72 575.75	+ 49 963.34	1407.84
BM3	72 571.07	+ 49 973.75	1408.37
DESCRIPTION OF BEACONS			
BM1:	8mm Round Iron Peg in tar		
BM2, BM3:	Round nail in tar		

ENGINEER:

ENKHA ENGINEERING
Civil & Structural Engineering Consultants
info@enkhaengineering.co.za
+27 (0) 73 492 1669
Periwinkle, Johannesburg, South Africa

CLIENT:

NATIONAL RESEARCH FOUNDATION (NRF)

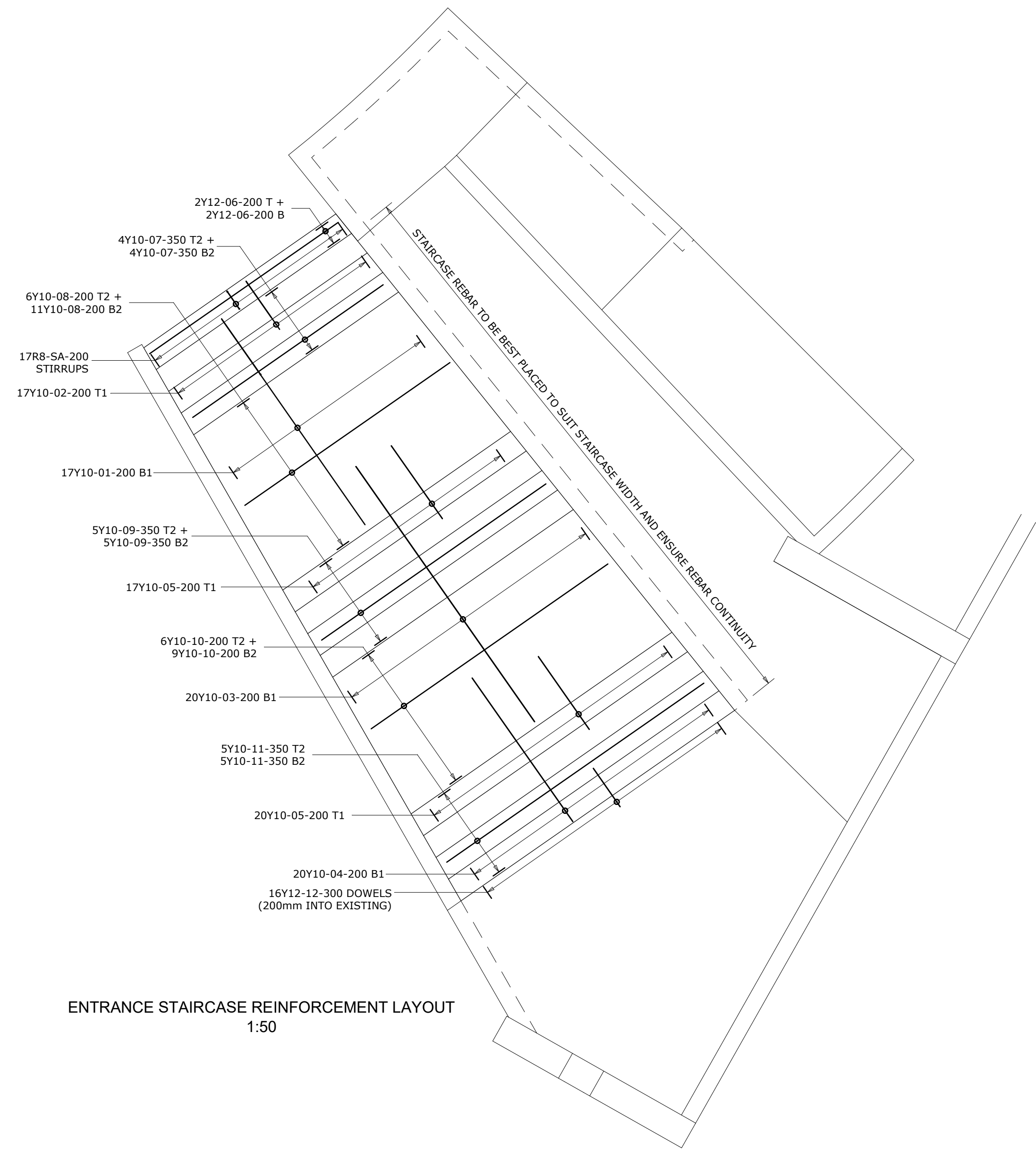
PROJECT:

NRF / CORP EM RFQ 01 / 2025-26 / RISA-010505

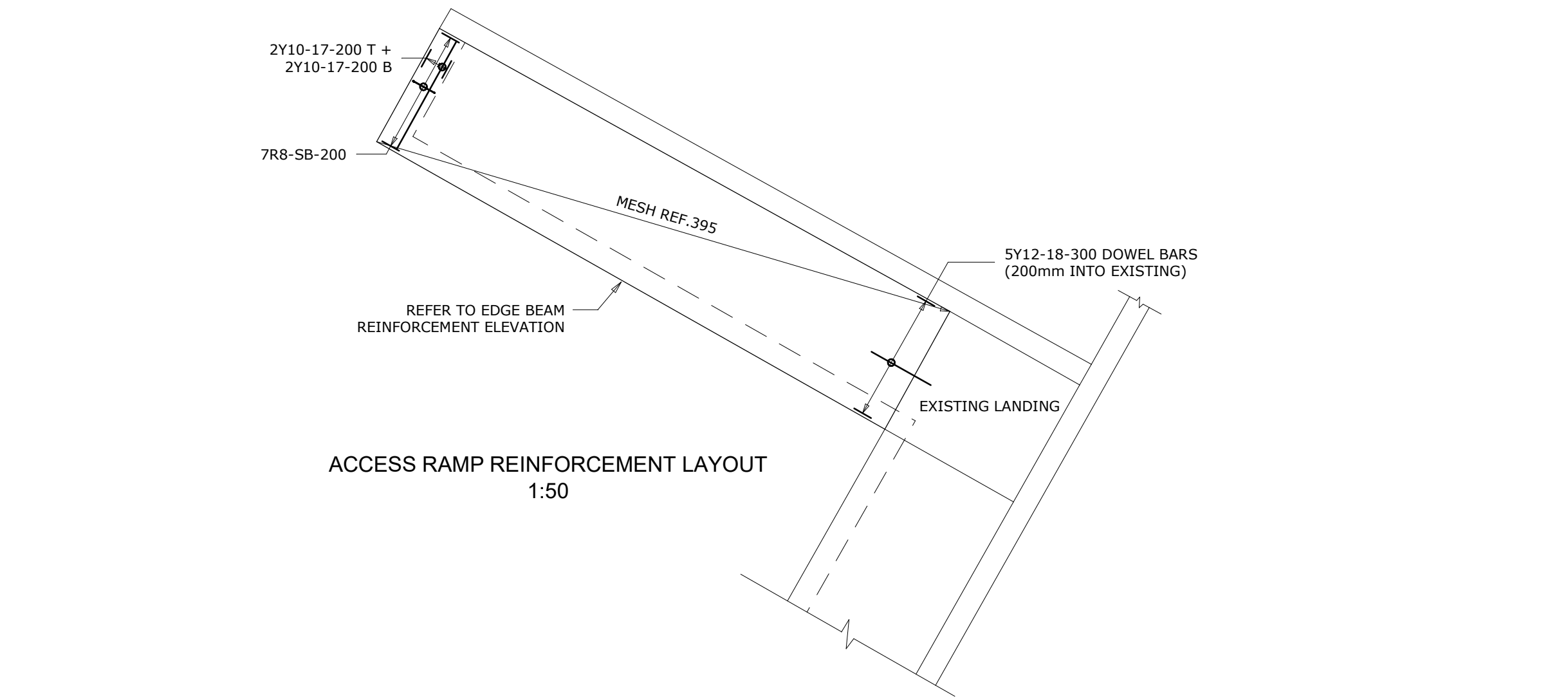
DRAWING TITLE:

SITE SURVEY OF ENTRANCE STAIRCASE
AND ACCESS RAMP

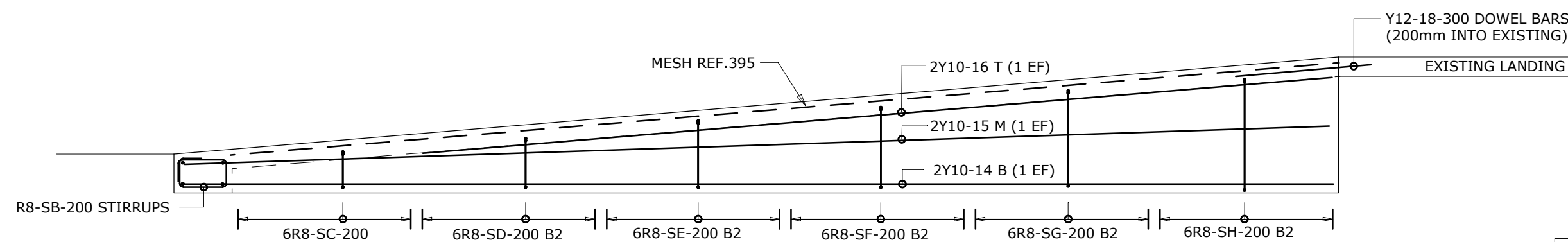
DATE:	DRAWING NUMBER:	REV:	SIZE:
24-08-2025	ENK-PL-P047-25-01	01	A1



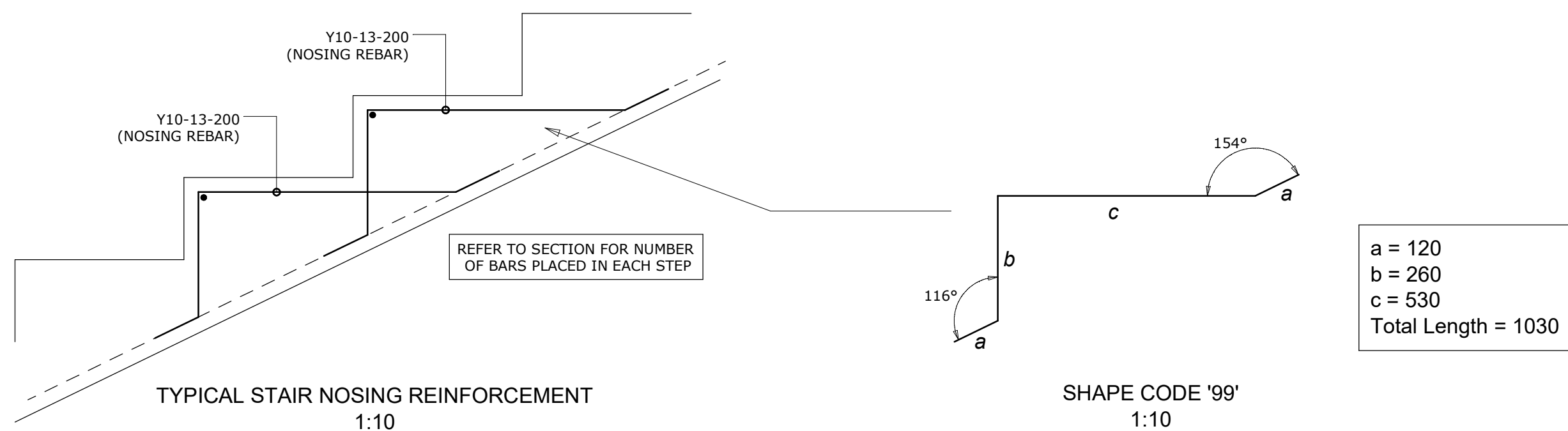
ENTRANCE STAIRCASE REINFORCEMENT LAYOUT
1:50



ACCESS RAMP REINFORCEMENT LAYOUT
1:50

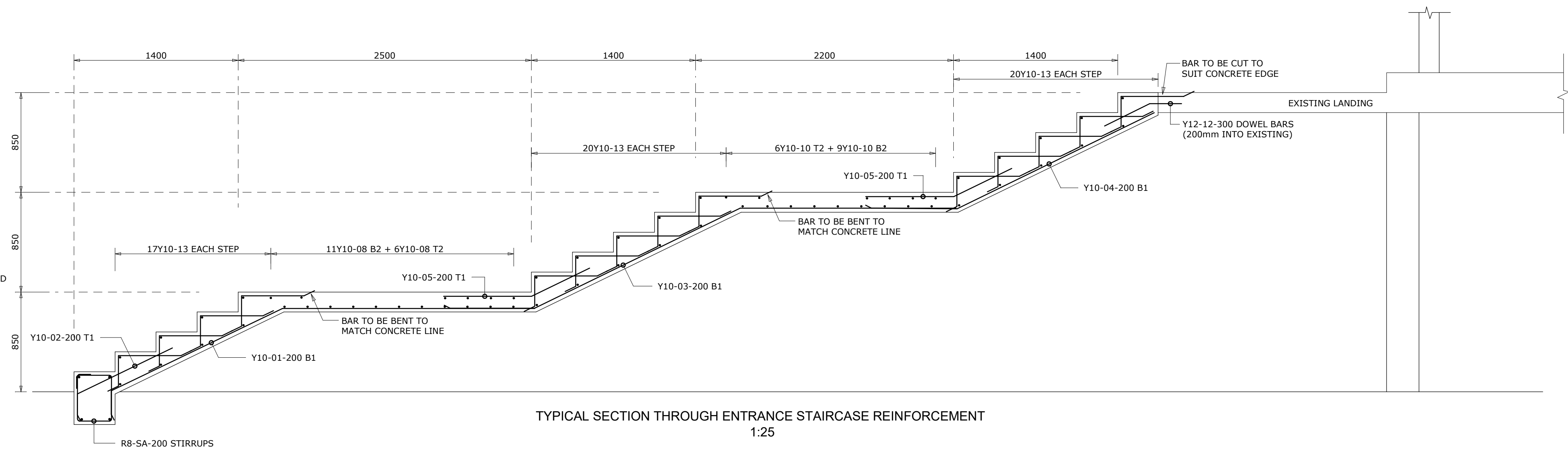


EDGE BEAM REINFORCEMENT ELEVATION
1:25

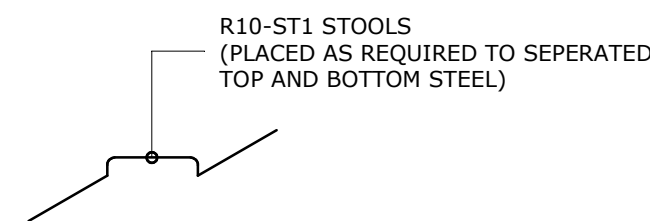


TYPICAL STAIR NOSING REINFORCEMENT
1:10

SHAPE CODE '99'
1:10



TYPICAL SECTION THROUGH ENTRANCE STAIRCASE REINFORCEMENT
1:25



- Notes**
- DO NOT SCALE FROM THIS DRAWING.
 - CONCRETE STRENGTH:
[STAIRCASE AND RAMP = 30MPa, U.N.O]
 - CONCRETE COVER TO REINFORCEMENT TO BE:
[STAIRCASE AND RAMPS = 30mm ALL ROUND, U.N.O]
 - REINFORCEMENT BENDING SCHEDULE IS IN ACCORDANCE WITH SABS 0144
 - MINIMUM LAPS FOR ALL REINFORCEMENT TO BE THUS:
Y10.....500 Y20.....1000
Y12.....600 Y25.....1250
Y16.....800 Y32.....1600
 - REINFORCEMENT TO BE LAYERED:
FF1 T1
FF2 T2
NF1 B1
NF2 B2
WALLS SLABS
 - ABBREVIATIONS:
NF1/NF2 - NEAR FACE
FF1/FF2 - FAR FACE
Alt - ALTERNATE
Abr - ALTERNATE BARS REVERSED.
ADD - ADDITIONAL / EXTRA
B - BOTTOM
T - TOP
Stg - STAGGERED
EF - EACH FACE
T.O.C - TOP OF CONCRETE
 - REINFORCEMENT SHOWN IS LISTED ON BAR BENDING SCHEDULE NUMBERS: BS001

ENGINEER:					
 <i>Civil & Structural Engineering Consultants</i> <i>info@enkhaengineering.co.za</i> <i>+27 (0) 73 492 1669</i> <i>Periwinkle, Johannesburg, South Africa</i>					
CLIENT:					
NATIONAL RESEARCH FOUNDATION (NRF)					
PROJECT:					
NRF / CORP EM RFQ 01 / 2025-26 / RISA-010505					
DRAWING TITLE:					
ENTRANCE STAIRCASE AND ACCESS RAMP REINFORCEMENT LAYOUT AND SECTIONS					
DRAWN:	DESIGNED:	DATE:	DRAWING NUMBER:	REV:	SIZE:
S.K	I.G	25-08-2025	ENK-RL-P047-25-001	01	A1