

Umjantshi House
30 Wolmarans Str.
Braamfontein
Johannesburg
2001

Private Bag X101
Braamfontein, 2107
T +27 11 013 1667

BID SPECIFICATION DOCUMENT.

1. SCOPE OF WORK AND AREAS OF FOCUS

1.1 DETAILS ON THE PREFERRED SOLUTION

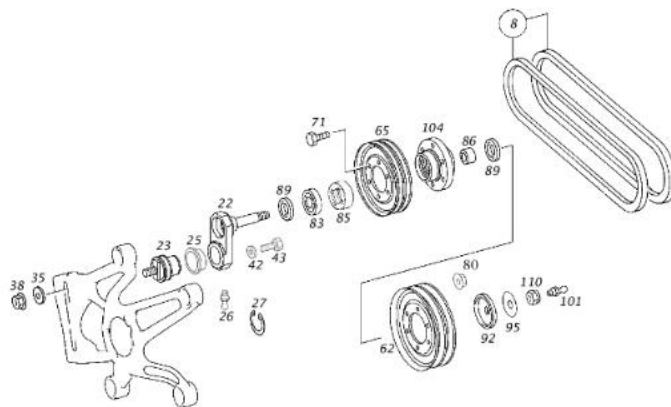
The appointment of an Automotive Engineering Entity that is capable of overhauling commercial vehicle engines, removing, replacing and commissioning it, and gives a six-month unlimited warranty from the date of commissioning.

1.2 AUTOMOTIVE ENGINEERING – GUIDELINES

1.2.1 During the engine overhaul process, when taking the engine/components, LDPT technical must be invited to see where the components are take and engineering report must be issued on company letterhead clearly indicting work done on components

1.2.2 During the engine overhaul process, the following parts, **supplied by LDPT**, must be removed, and replaced. The costs for removing and replacing must be included in the price for removing and replacing as well as commissioning of the engine:

Tensioner Pulley Assembly – MA 3825060110

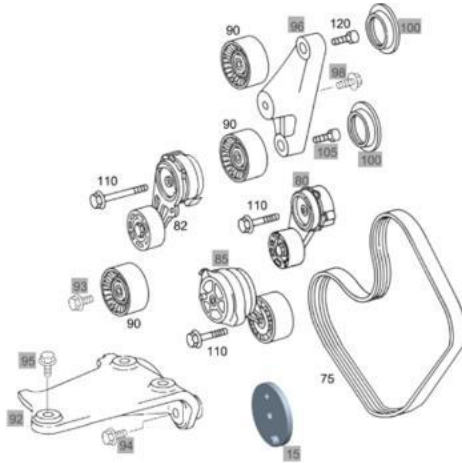


Guide Pulley Assembly – MA 4572004770

Directors
{Chairperson} N. Nokwe-Macamo, Adv. S. Sethene,
L. Joel, G. Maluleke, M. Mukhuba, TN. Mpye,
Dr. R. Kgoroadira, Prof. J. Havenga,
H. Ralinala, BJ. Nobunga

Group CEO
H. Emeran

Company Secretary
L. Mthayise



In the process of removing and replacing and/or overhauling the engine, should the Service Provider discover any additional work affecting the engine, technical department must be made aware such work, must be quoted for separately and an order supplied by PRASA prior to such work commencing.

1.2.3 Guideline Requirements

No	Description
1	Remove, Replace and Commissioning Engine including Aggregates
2	Strip / Chemical Cleaning / B Blast / Oil Channel Cleaning
3	Consumables
4	Crack Tests
5	Machining: (Polish Main Bearings / Line Bore / Etc.) Including refacing of tappets
6	Standardizing Conrods
7	Re-sleeve Cylinders
8	Recondition Cylinder Heads
9	Overhaul Fuel Injectors
10	Recondition Turbo
11	Set Main Bearings
12	Set Conrod Bearings
13	Overhaul Gasket Set and Gaskets
14	Sleeve Seals
15	O-Rings and Seals
16	Conrod Bolts
17	Oil Pressure Sensor – MA 0125420517
18	Thermostat
19	Water Pump (Coolant Pump)
20	Oil Pump
21	Oil Pressure Valve
22	Complete Engine Assembly
23	Inter Cooler – Clean and Repair
24	Radiator – Clean and Repair
25	Overhaul – Air Compressor
26	Overhaul Starter
27	Overhaul Alternator
28	Radiator Hoses
29	Fuel Tank – Clean and Repair

Directors (Chairperson) N. Nokwe-Macamo, Adv. S. Sethene,
L. Joel, G. Maluleke, M. Mukhuba, TN. Mpye,
Dr. R. Kgoroadira, Prof. J. Havenga,
H. Ralinala, BJ. Nobunga

Group CEO
H. Emeran

Company Secretary
L. Mthayise



1.3 PRASA PARTS SUPPLY

All other parts and components required will be supplied by the LDPT depot. The following parts and components will be supplied by the LDPT as an example (all parts supplied must be done on an exchanged basis and handed in at the Depot SCM for scrapping and disposal):

No	Description
1	Camshaft
2	Cam Followers (Roller Tappets) x 12
3	Piston and Sleeve Kits x 6
4	Fuel Filters
5	Oil Filter
6	Radiator Cap
7	Engine Mountings
8	Visco Fan
9	Flywheel
10	Vibration Damper
11	Air Filters
12	Lubricants (Post Installation)
13	Antifreeze (Post Installation)
14	Etc.

2. SPECIFICATION of the WORK and PRODUCTS and SERVICES REQUIRED

The engine overhaul must be done in line with that of the Original Equipment Manufacturer (OEM) specifications for the following base Vehicle Identification Number (VIN or Chassis Number):

- Mercedes Benz Bus – VIN: 9BM6340619B649766

2.1 ENGINE BLOCK INSPECTION – WARRANTY

The engine block must be inspected for excessive wear on the cam-follower cylinders and cam-follower key guides and verified serviceable by the supplier for warranty purposes.



Directors

[Chairperson] N. Nokwe-Macamo, Adv. S. Sethene,
L. Joel, G. Maluleke, M. Mukhuba, TN. Mpye,
Dr. R. Kgoroadira, Prof. J. Havenga,
H. Ralinala, BJ. Nobunga

Group CEO
H. Emeran

Company Secretary
L. Mthayise

2.3 WARRANTIES - Overhauled Engine and Aggregates

An overhauled must carry a warranty from the supplier for at least six months or 100 000 kilometers, whichever comes first (a better warranty will be advantageous). It must be a condition of the warranty that the supplier commission the engine. Any other terms and conditions must be stipulated clearly.

The abovementioned will ensure that LDPT is not liable for any poor workmanship and/or negligence. Documentary proof must be placed on record.

In case of an engine failure during the warranty period, the supplier will be responsible for towing charges, if the failure is attributed to poor workmanship and/or part failure.

The supplier must have sufficient insurance to cover damage or destruction to any or all LDPT property incurred in the performance of its services to PRASA.

Directors
(Chairperson) N. Nokwe-Macamo, Adv. S. Sethene,
L. Joel, G. Maluleke, M. Mukhuba, TN. Mpye,
Dr. R. Kgoroadira, Prof. J. Havenga,
H. Ralinala, BJ. Nobunga

Group CEO
H. Emeran

Company Secretary
L. Mthayise