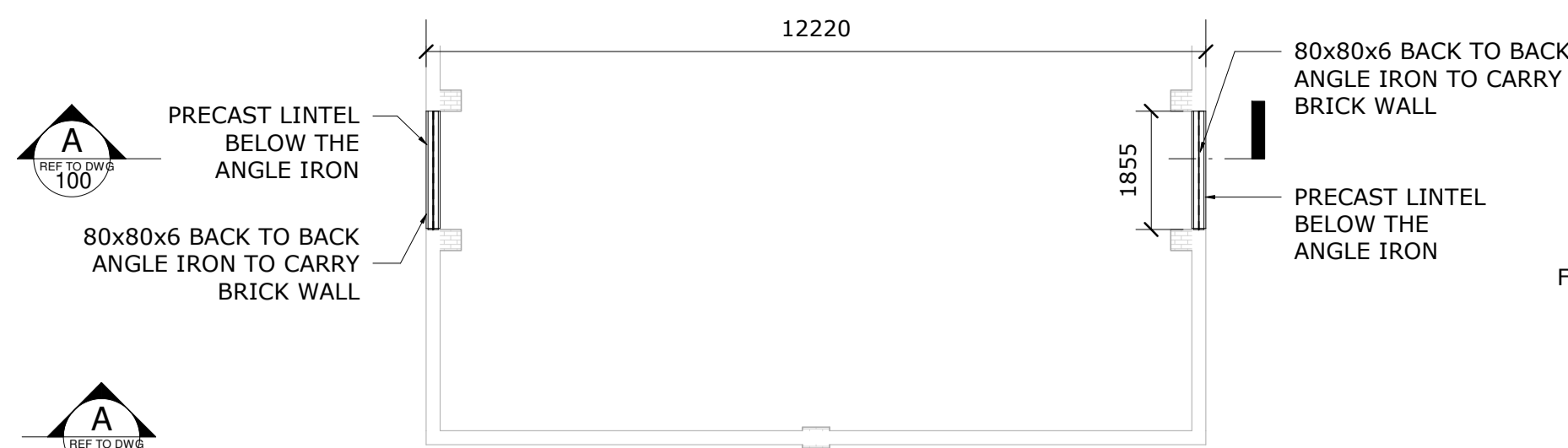
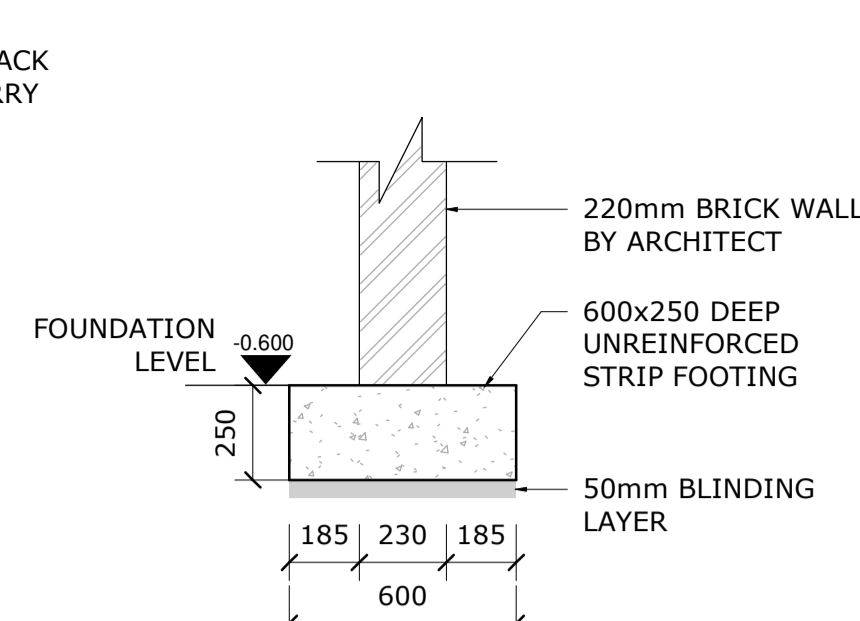


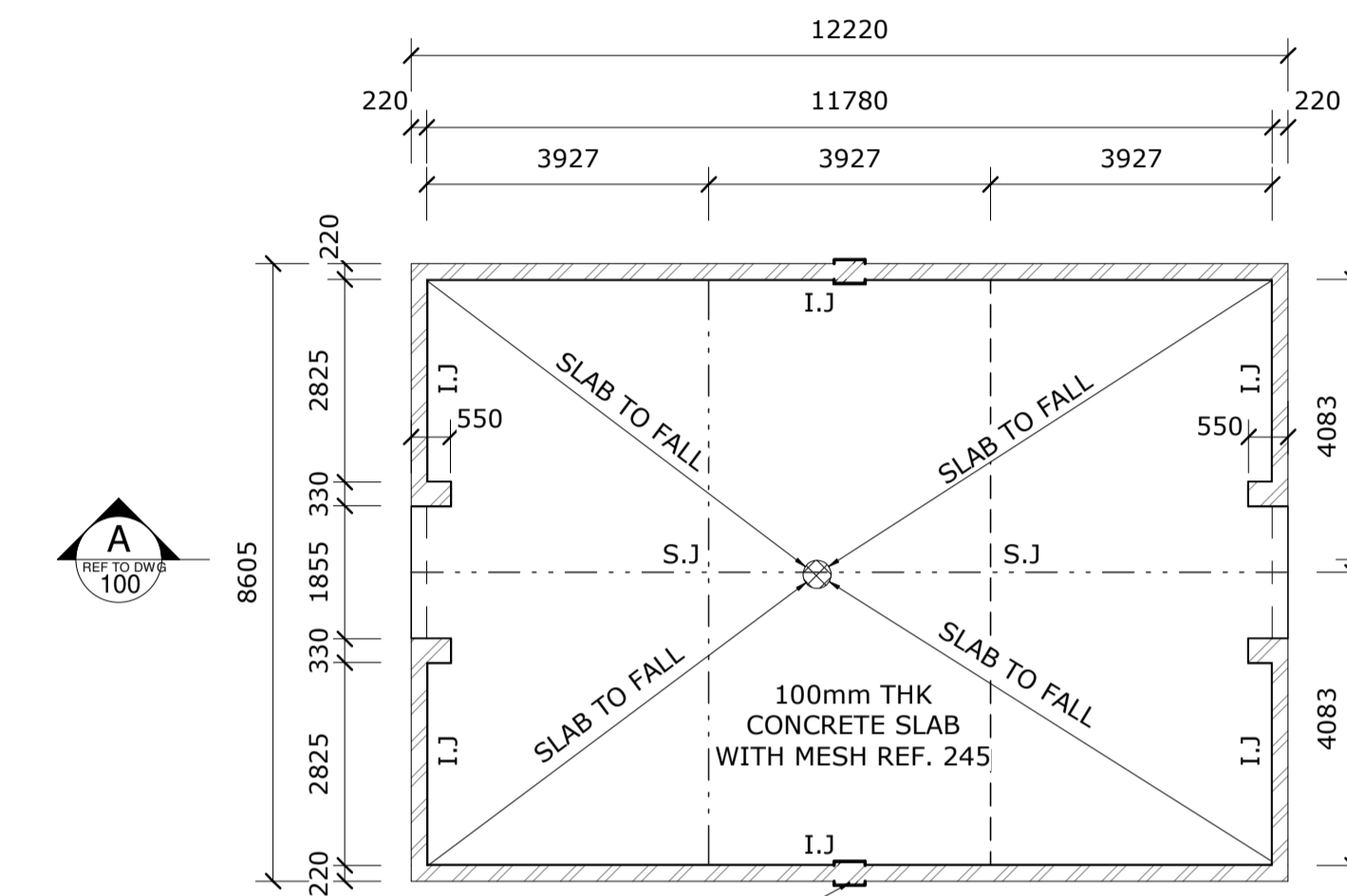
**FOUNDATION LAYOUT**  
SCALE 1 : 100



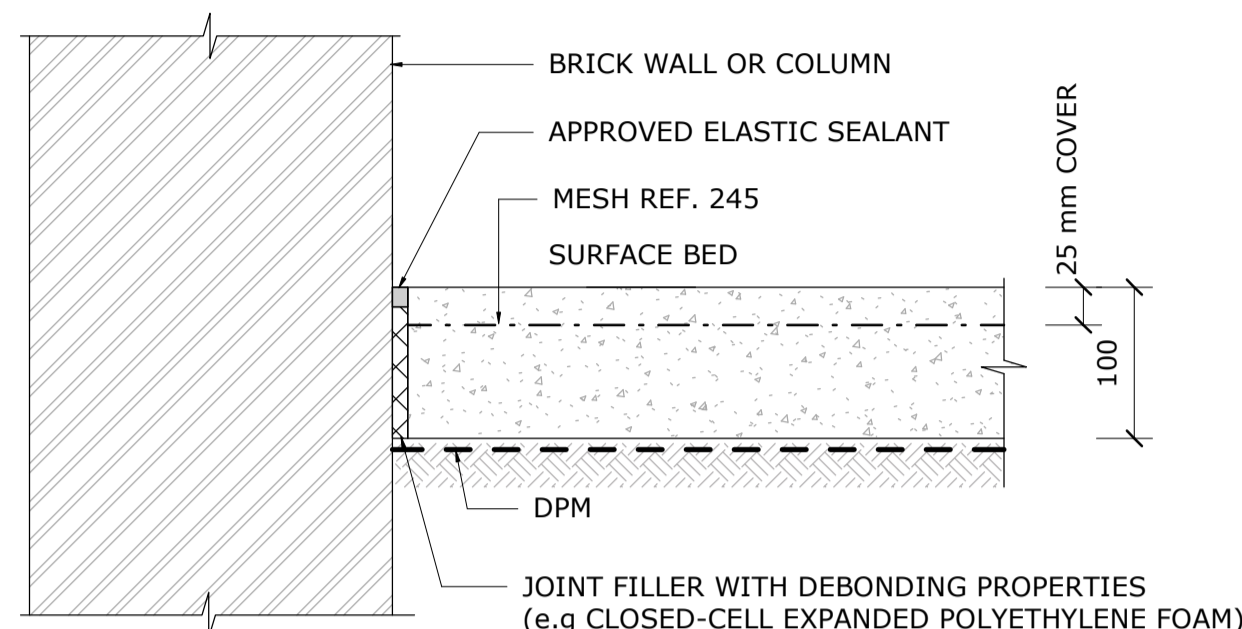
**LINTEL LAYOUT**  
SCALE 1 : 100



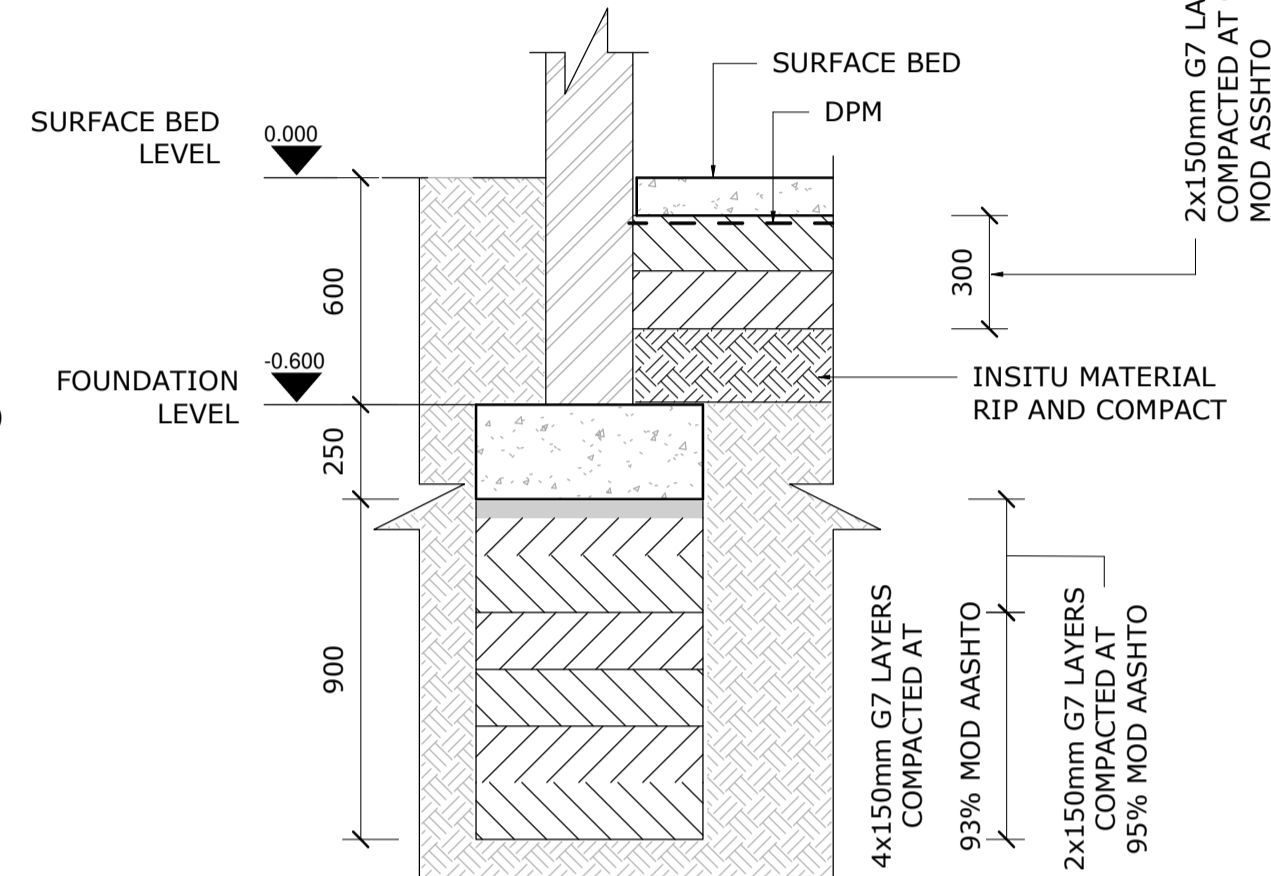
**TYPICAL STRIP FOOTING DETAIL**  
SCALE 1 : 20



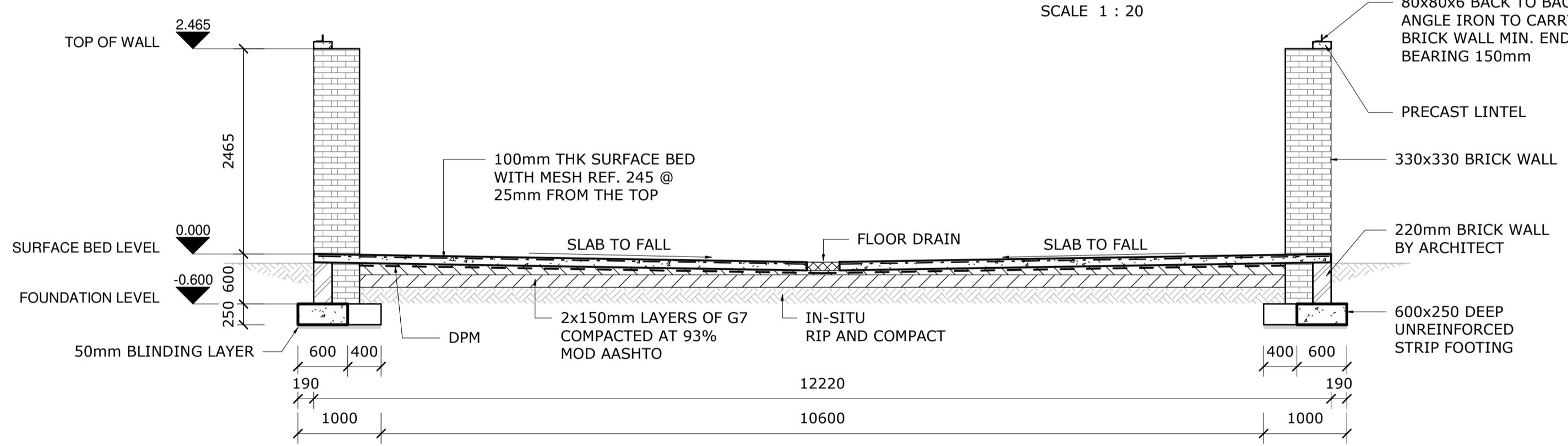
**SURFACE BED LAYOUT**  
SCALE 1 : 100



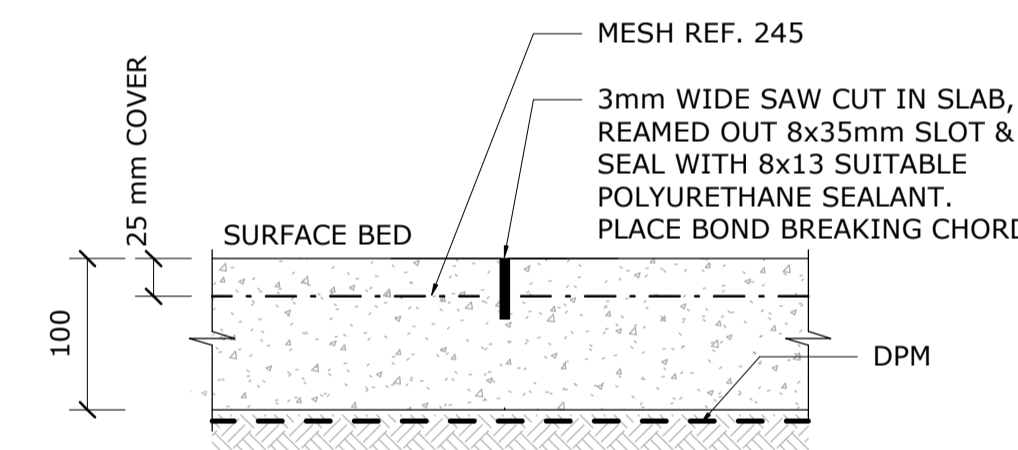
**ISOLATION JOINT (I.J.)**  
SCALE 1 : 5



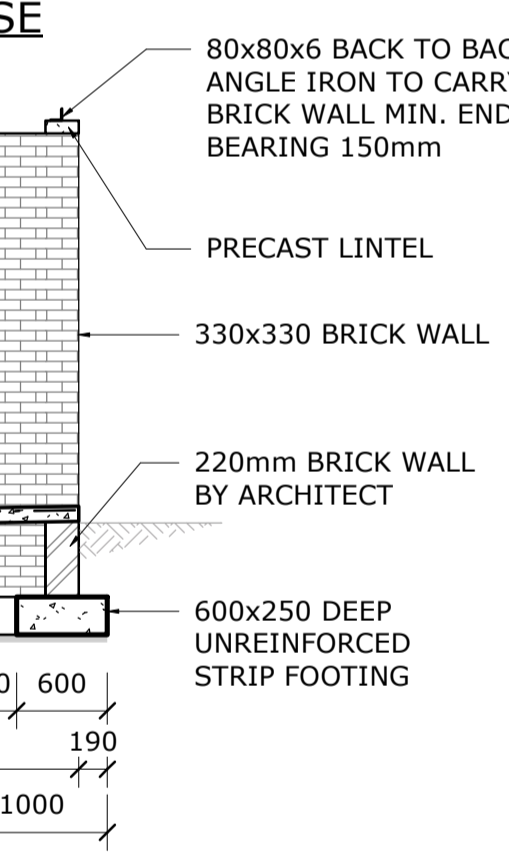
**TYPICAL LAYER WORKS DETAIL**  
SCALE 1 : 20



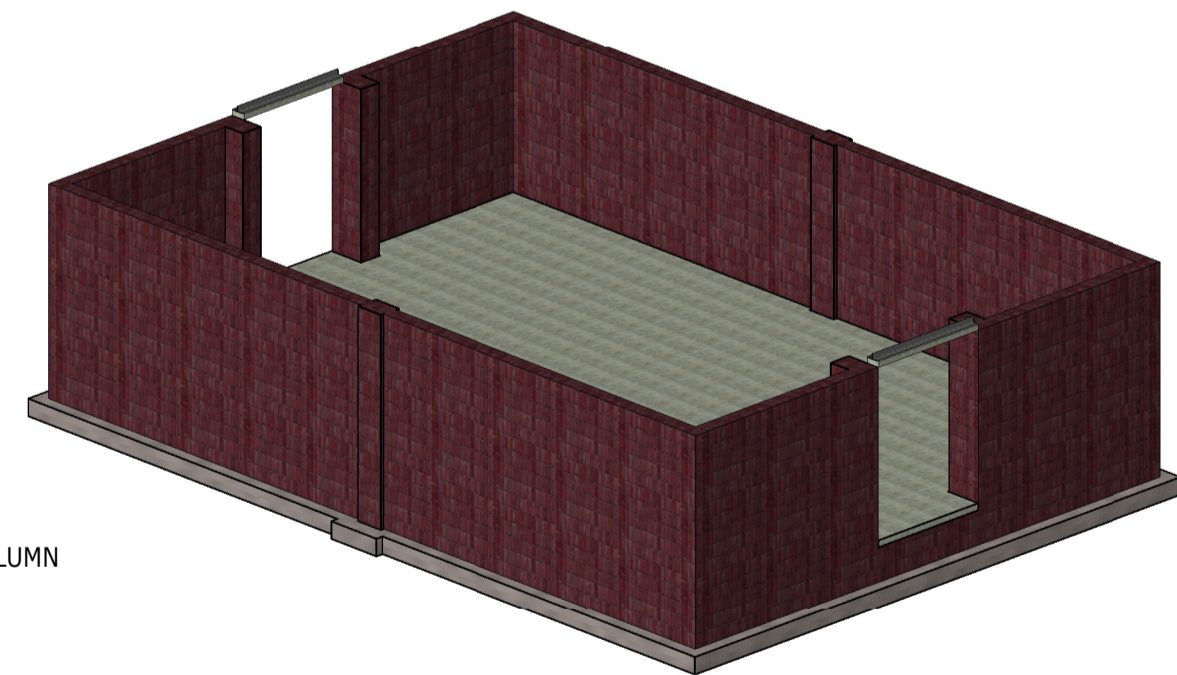
**SECTION A-A**  
SCALE 1 : 50



**SAW CUT JOINT (S.J.)**  
SCALE 1 : 5



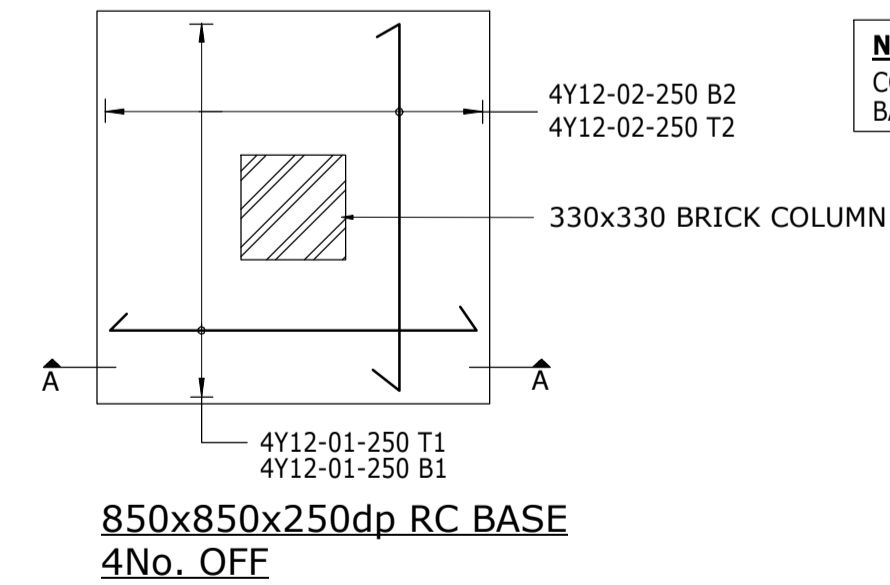
**TYPICAL COLUMN BASE**  
SCALE 1 : 20



**3D VIEW**  
SCALE

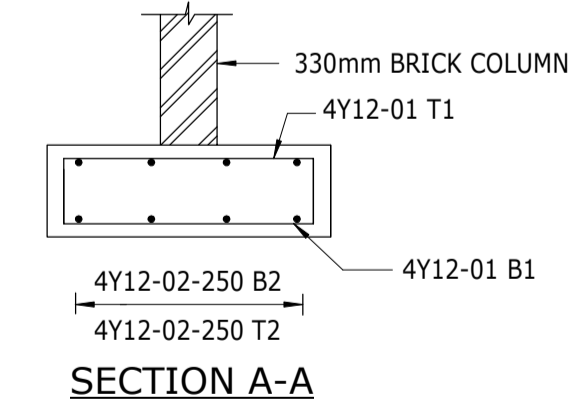
			Project Name		TROMPSBURG SCHOOL			Ref. Dwg. No.			CE00092-ST-REF-100					
			Project Number		CE00092			Schedule No.			01					
			Date		27.08.2021			Revision No.			0.					
			Design By		E. TLOMATSANA			Checked By			E TLOMATSANA					
STRUCTURAL MEMBER	BAR MARK	TYPE & SIZE	No. OF MEMBERS	No. IN EACH MEMBER	TOTAL NUMBERS	CUT LENGTH mm	SHAPE CODE	DIMENSIONS								
								A mm	B mm	C mm	D mm	E/R mm				
850x850x250 DP RC COLUMN BASE	01	Y12	8	4	32	1050	38	150	750	(150)						
	02	Y12	8	4	32	990	38	130	730	(130)						
STEEL TO COMPLY WITH : SANS 282-2003						STOOLS SIT ON B1 AND SUPPORT T2 LAYER										
TOTAL MASS	Y10	Y12	Y16	Y20	Y25	Y32	Y40	R8	R10	R12	R16	R20	R25	R32	R40	
		55														
ABBREVIATIONS :																
T top		B bottom		B1 1st lowest layer		T1 1st top most layer		T2 2nd layer down		B2 2nd layer up		EF each face FF far face				
NF near face		EW each way		STG stagger		ALT alternate		ABR alternate bars reversed								

**BENDING SCHEDULE**  
SCALE 1 : 30

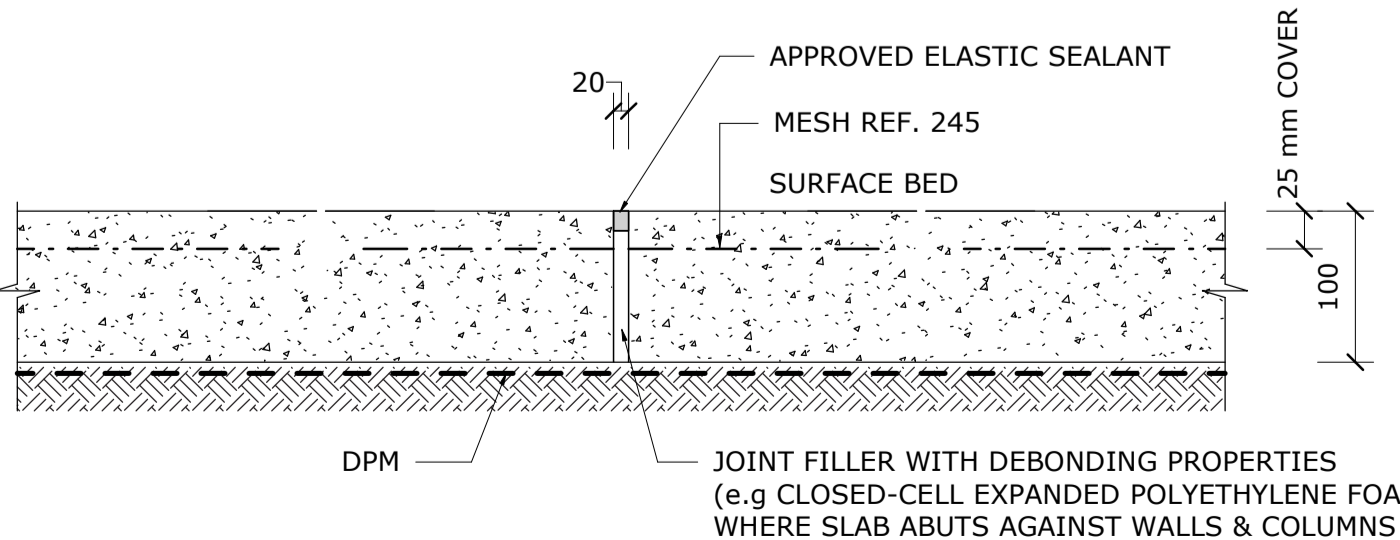


**850x850x250dp RC BASE**  
4No. OFF

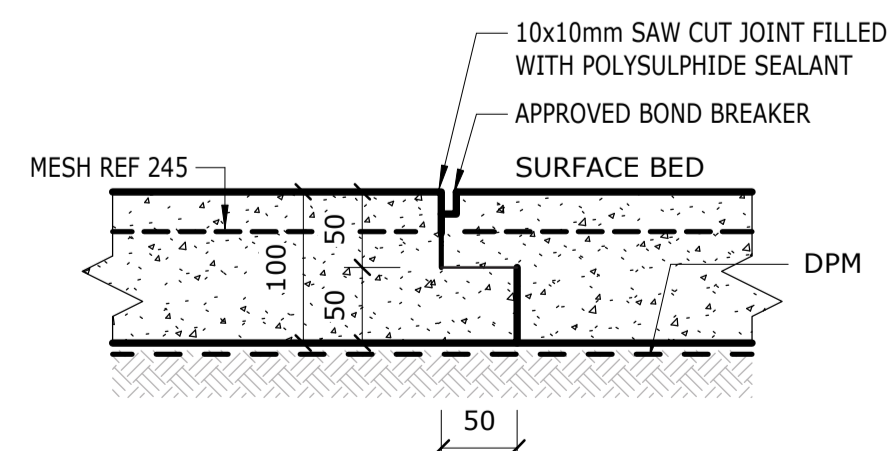
**NOTE:**  
COVER TO BE:  
BASE= 50mm



**SECTION A-A**



**EXPANSION JOINT**  
SCALE 1 : 5



**CONSTRUCTION JOINT (C.J.)**  
SCALE 1 : 5

**FOR TENDER**

NOTES:

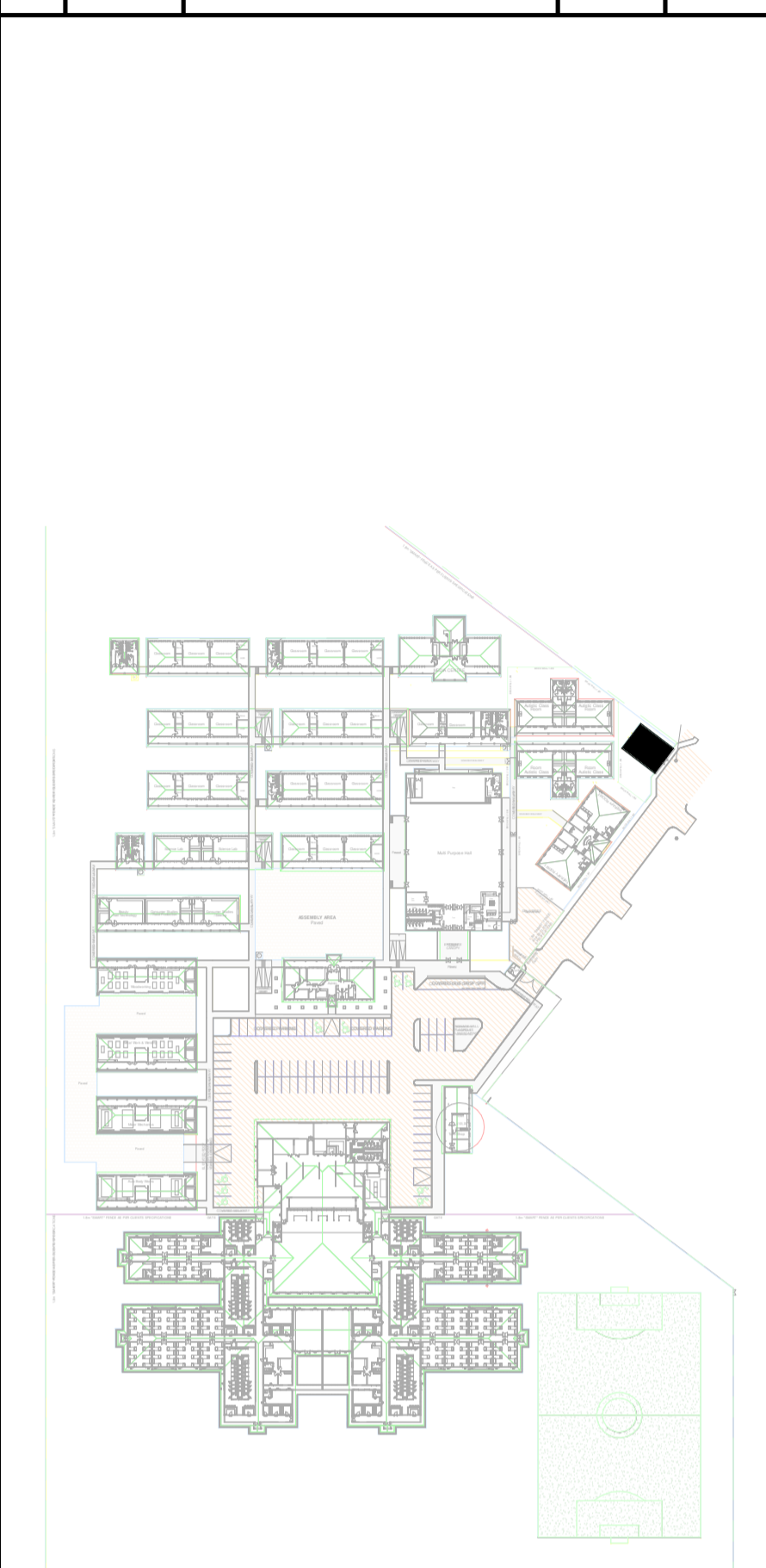
- ALL DRAWINGS TO BE READ IN CONJUNCTION WITH THE ARCHITECT DRAWINGS
- ALL FOUNDATION EXCAVATION TO BE INSPECTED AND APPROVED BY ENGINEER BEFORE FIXING STEEL REINFORCEMENT OR CASTING CONCRETE. WHERE SUITABLE FOUNDING MATERIAL IS NOT ENCOUNTERED AT THE DEPTH SHOWN ON THE FOUNDATION DRAWINGS, EXCAVATION IS TO PROCEED TO A DEPTH AS APPROVED BY THE ENGINEER ON SITE.  
STRIP OR PAD FOOTING TO BE CAST AT A DEPTH MINIMUM 600mm DEEP. BELOW THIS LEVEL, CONSTRUCT A SOIL RAFT COMPACTED IN 6X150 LAYERS OF G7 AT 93% MOD AASHTO AT OMC.
- BELOW SURFACE BED: INSITU SOIL TO RIP AND COMPACT, THEN 2 LAYERS IN 150mm MAXIMUM COMPACTED TO 93% MODIFIED AASHTO DENSITY AT OMC.
- CONCRETE MIXES:  
BLINDING 15/19  
FOUNDATIONS 20/19  
RC PAD FOOTING, SURFACE BED 25/19  
BEAMS AND COLUMNS 30/19
- BEARING PRESSURE ON SOIL RAFT = 100KPa  
SCHOOL FOUNDATION PRESSURE = 44.35 KN/m<sup>2</sup>  
HALL FOUNDATION PRESSURE = 76.21 KN/m<sup>2</sup>  
SUPERIMPOSED LOADS:  
LIVE ON UNACCESSIBLE ROOF = 0.25kN/m<sup>2</sup>  
WIND SPEED = 28 m/s  
WIND PRESSURE = 447.29 N/m<sup>2</sup>

<b>BRICK COLUMN</b>	330x330
<b>COLUMN BASE</b>	850x850x250
<b>STRIP FOOTING</b>	600x250
<b>STRIP FOOTING (UNDER THE WALK WAY)</b>	450x230

LEGEND	
ISOLATION JOINT (I.J.)	---
SAW CUT JOINT (S.J.)	---
CONSTRUCTION JOINT (C.J.)	---
EXPANSION JOINT (E.J.)	---

STRUCTURAL ELEMENTS	REINFORCEMENT IN kg/m <sup>3</sup>
PAD FOOTING FOR COLUMNS	145 kg/m <sup>3</sup>
STRIP FOOTING	45 kg/m <sup>3</sup>
RC COLUMNS	150 kg/m <sup>3</sup>
SURFACE BED	30 kg/m <sup>3</sup>

REV	DATE	DESCRIPTION	ISSUED BY	APPR BY
0	21.10.13	ISSUED FOR TENDER	MNP	ET



CLIENT



CONSULTANT



**Gauteng Office (Head Office)**  
GladAfrica House, Hertford Office Park  
90 Bekker Road, Vorna Valley, Midrand, 1686  
P.O Box 6723 Halfway House 1685  
Tel. +27 11 312 2537/2584  
Fax +27 11 805 1905  
[www.gladafrika.com](http://www.gladafrika.com)

	NAME	REG. NO.	SIGNATURE
DRAWN	MN PHAHLAMOHLAKA	N/A	N/A
DESIGNED	E. TLOMATSANA	2017305033	

**PROJECT DESCRIPTION**  
TROMPSBURG SPECIAL NEEDS SCHOOL

**DRAWING TITLE**  
REFUSE AREA LAYOUTS & SECTIONS

STATUS LEGEND				SHEET SIZE	
I	= INFORMATION			A1	
CV	= CONCEPT AND VIABILITY			SCALE	
D	= DESIGN DEVELOPMENT			AS SHOWN	
T	= TENDER				
C	= CONSTRUCTION				
AB	= AS BUILT				
DISCIPLINE	PROJECT NUMBER	STATUS	REVISION		
STRUCTURAL	CE00092-ST-REF-100	T	0		