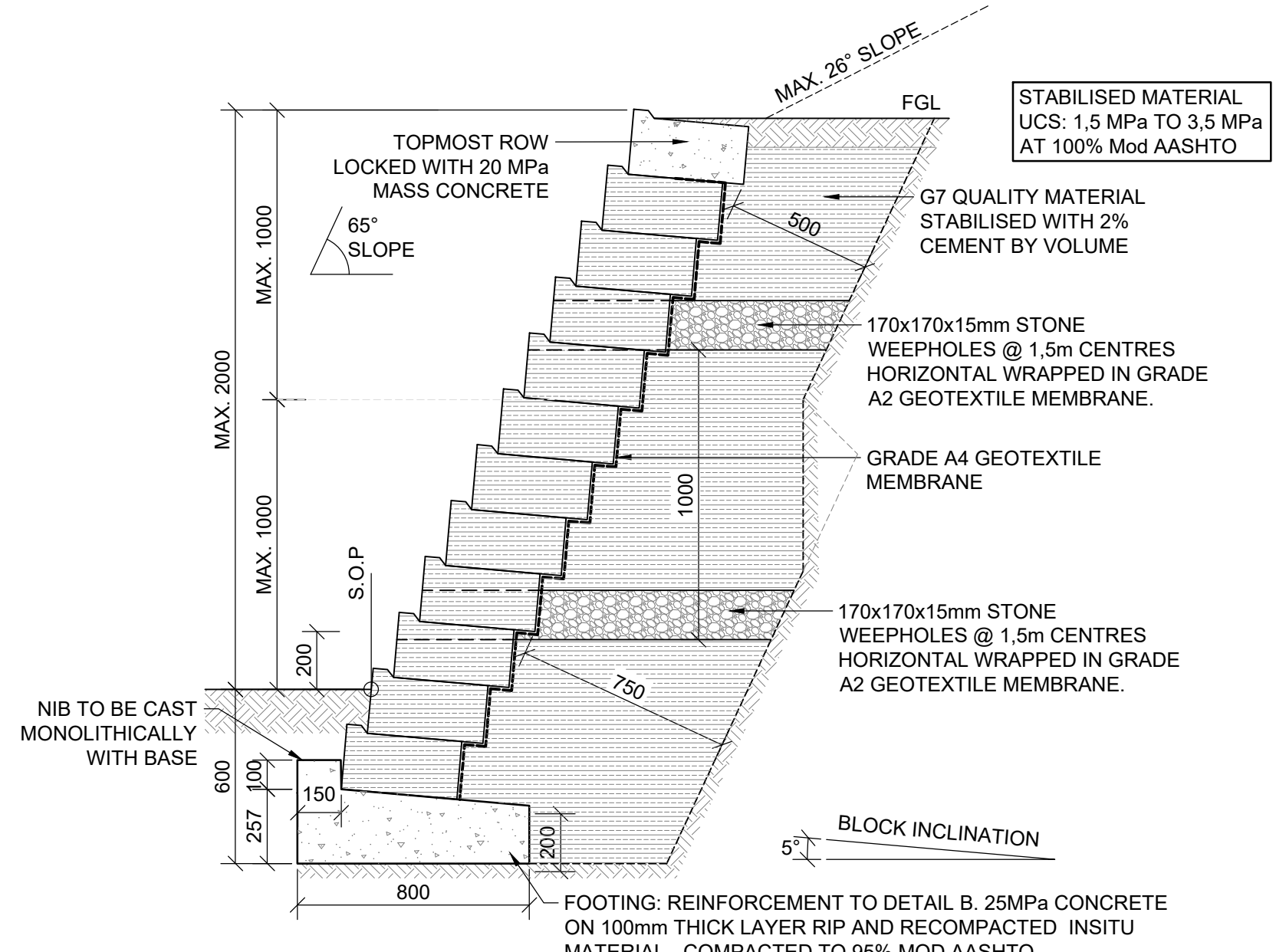
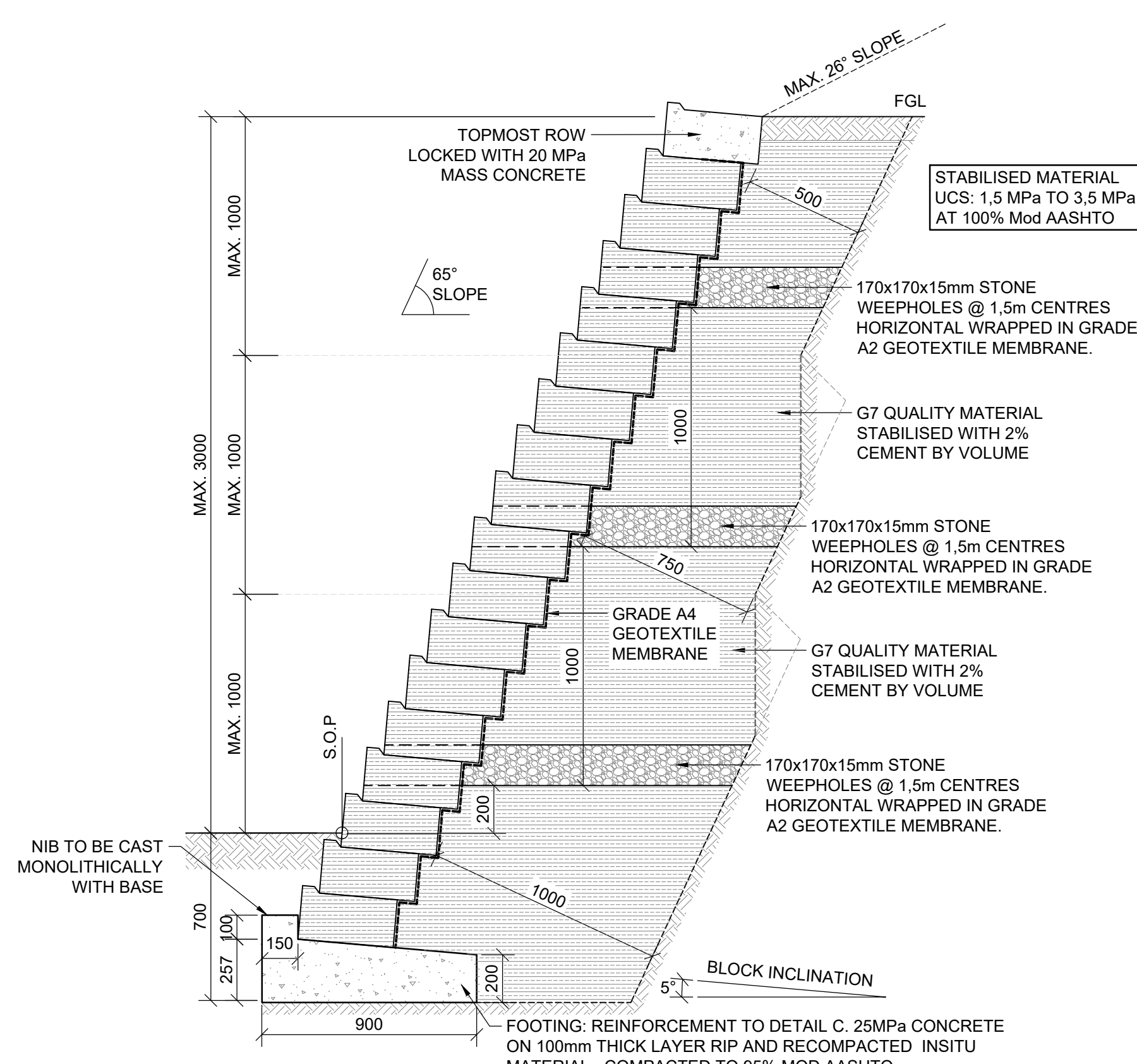


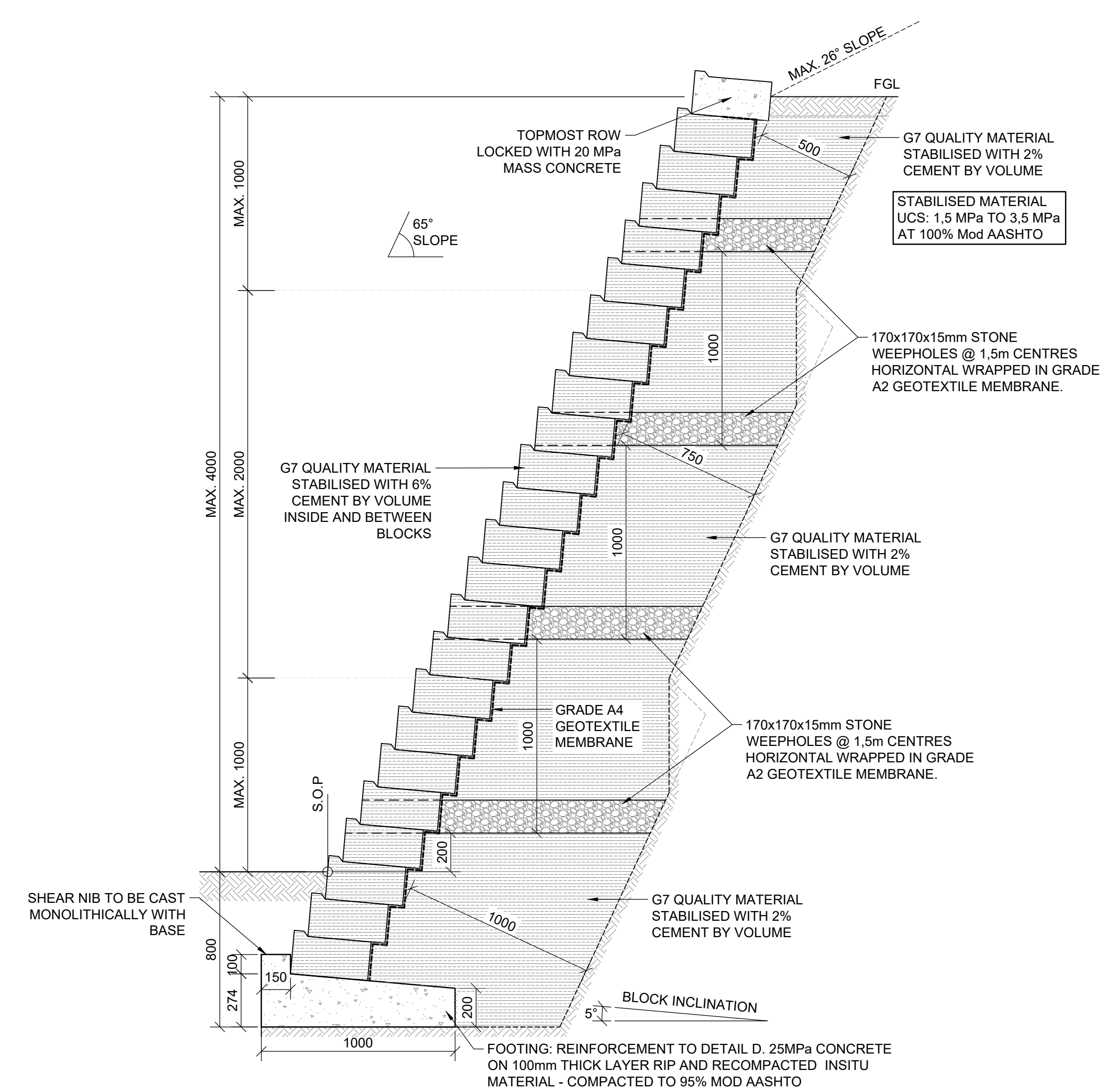
TYPICAL SECTION SHOWING DRY-STACK  
RETAINING WALL (>0m TO 1m EXPOSED HEIGHT)  
SCALE 1:20



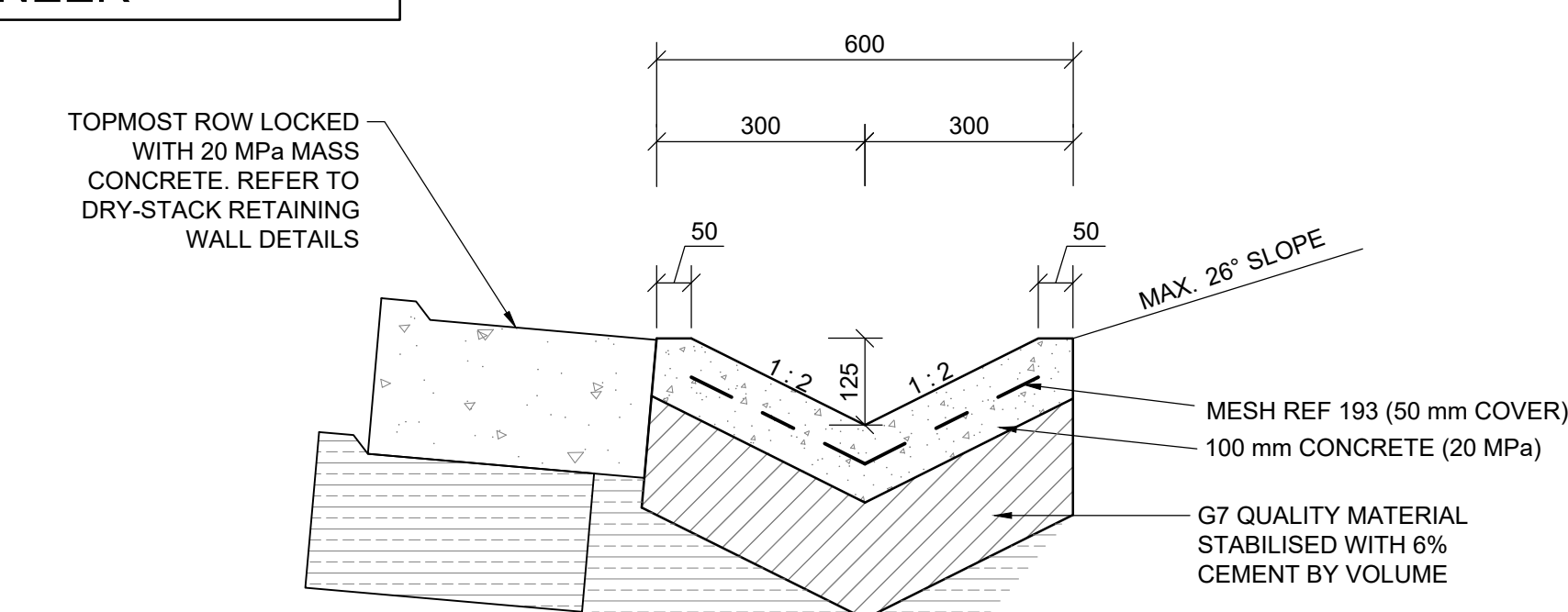
TYPICAL SECTION SHOWING DRY-STACK  
RETAINING WALL (>1m TO 2m EXPOSED HEIGHT)  
SCALE 1:20



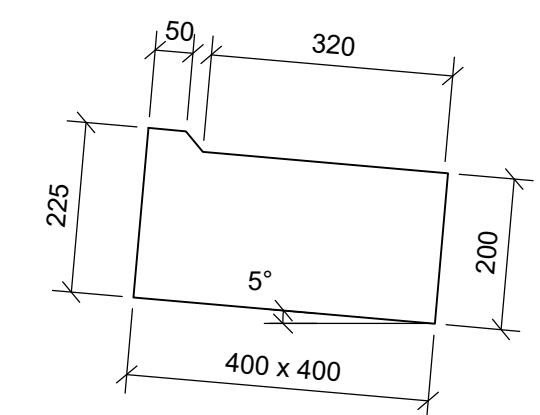
TYPICAL SECTION SHOWING DRY-STACK  
RETAINING WALL (>2m TO 3m EXPOSED HEIGHT)  
SCALE 1:20



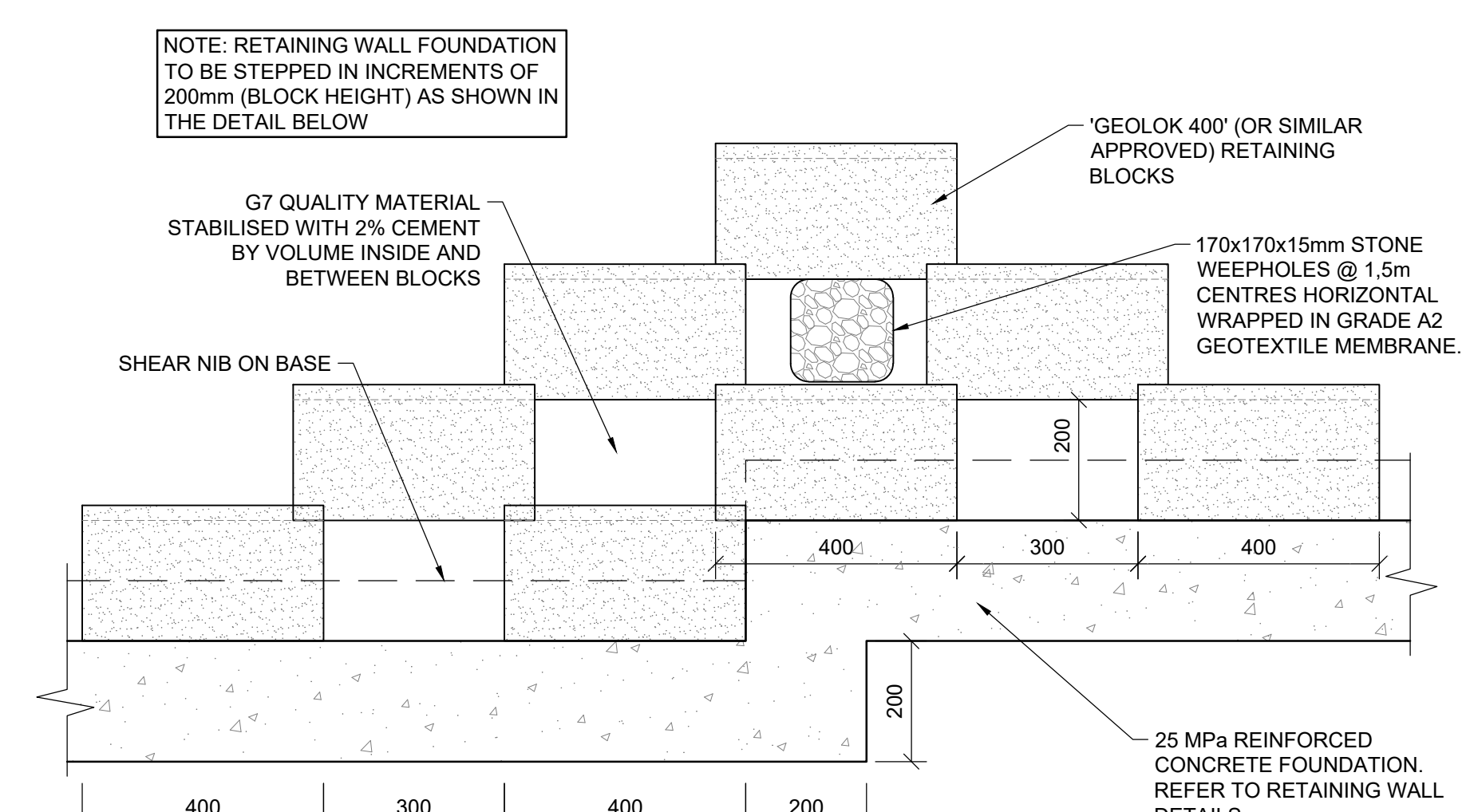
TYPICAL SECTION SHOWING DRY-STACK  
RETAINING WALL (>3m TO 4m EXPOSED HEIGHT)  
SCALE 1:20



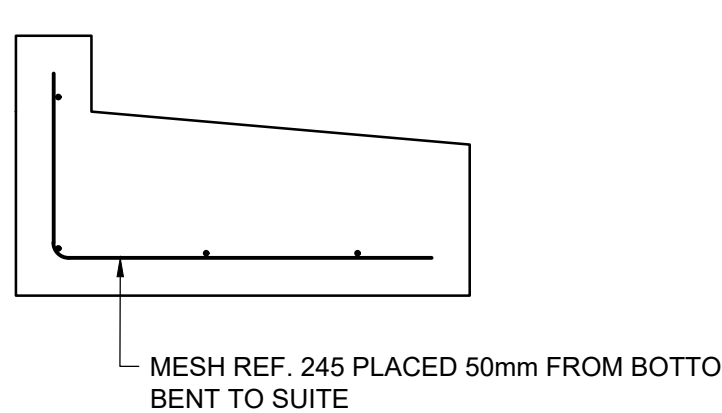
CONCRETE LINED V-DRAIN AT TOP OF RETAINING  
WALL (WHERE REQUIRED BY ENGINEER)  
SCALE 1:10



TYPICAL RETAINING BLOCK DETAIL  
SCALE 1:10



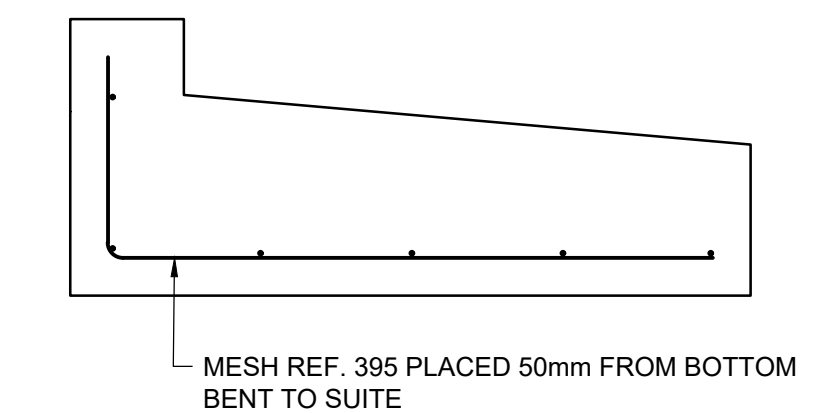
TYPICAL DRY-STACK RETAINING WALL STEPPED  
FOUNDATION DETAIL  
SCALE 1:10



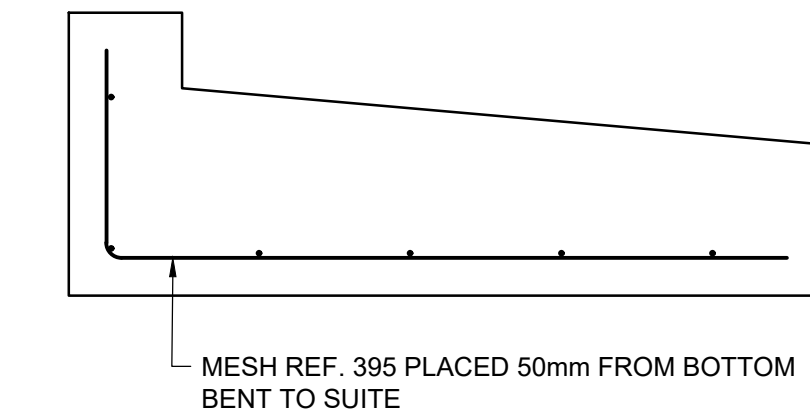
DETAIL A  
SCALE 1:15



DETAIL B  
SCALE 1:15



DETAIL C  
SCALE 1:15



DETAIL D  
SCALE 1:15

NOTE: BANKS OF HEIGHTS EXCEEDING  
4m TO BE TERRACED IN ACCORDANCE  
WITH THE ENGINEERS DIRECTIONS ON  
SITE.

NOTE: V-DRAIN TO BE CONSTRUCTED  
WHERE REQUIRED BY THE ENGINEER.  
POSITION TO BE FINALISED ON SITE, AS  
DIRECTED BY THE ENGINEER

NOTE:  
  
BLOCK TYPE: 'GEOLOK 400' (OR SIMILAR  
APPROVED) RETAINING BLOCKS  
  
MASS PER BLOCK TO BE EQUAL TO OR  
GREATER THAN 47 kg  
  
THE CONTRACTOR IS TO PROVIDE A SAMPLE  
AND THE PRODUCT SPECIFICATIONS OF THE  
RETAINING BLOCK TYPE FOR APPROVAL BY  
THE ENGINEER PRIOR TO PROCURING ANY  
RETAINING BLOCKS FOR CONSTRUCTION.

**NOTE**

RETAINING WALL :

- ALL LEVELS AND DIMENSIONS TO BE CHECKED ON SITE
- ALL CONCRETE WORK IS TO COMPLY WITH SANS 1200G.
- CONCRETE GRADE - FOUNDATION 25 / 19
- ALL FOUNDATION EXCAVATIONS ARE TO BE INSPECTED BY THE ENGINEER PRIOR TO CASTING OF CONCRETE.
- ALL REINFORCING FIXING IS TO BE INSPECTED BY THE ENGINEER PRIOR TO CASTING OF CONCRETE.
- SIX CONCRETE CUBES TO BE TAKEN PER BATCH. THREE CUBES TO BE TESTED AT SEVEN DAYS. THE REMAINDER AT TWENTY EIGHT DAYS. THE RESULTS ARE TO BE FORWARDED TO THE ENGINEER FOR REVIEW AND APPROVAL.
- SET BOTTOM ROW OF BLOCKS IN WET CONCRETE.
- ALL BACKFILL TO BE COMPACTED TO 93% MOD AASHTO DENSITY
- STORM WATER BEHIND THE TOP OF THE WALL TO BE MANAGED IN SUCH A MANNER AS TO OBVIATE SCOUR BEHIND OR OVER - TOPPING OF THE WALL.
- THE CONTRACTOR IS TO PROVIDE A SAMPLE AND THE PRODUCT SPECIFICATIONS OF THE RETAINING BLOCK TYPE FOR APPROVAL BY THE ENGINEER PRIOR TO PROCURING THE RETAINING BLOCKS FOR CONSTRUCTION.
- THE ENGINEER REQUIRES AT LEAST 24 HOUR NOTICE FOR ALL INSPECTIONS.
- BANKS OF HEIGHTS EXCEEDING 4m TO BE TERRACED IN ACCORDANCE WITH THE ENGINEERS DIRECTIONS ON SITE.

SCALE (mm)			
No. REFERENCE DRAWINGS			
557/SMIT/903	TYPICAL DETAILS		
557/SMIT/902-2	FOOTPATHS CROSS SECTIONS		
557/SMIT/902-1	ROAD CROSS SECTIONS		
557/SMIT/901	ROAD AND FOOTPATHS LONG SECTIONS		
557/SMIT/900	ROAD AND FOOTPATHS LAYOUT AND DETAILS		
REV	DESCRIPTION	BY	DATE
P1	FOR TENDER	K.G	2024.03.28

Professional person Registration

CLIENT

**ETHEKWINI MUNICIPALITY**

PROJECT

**eTHEKWINI: PROVISION OF INCREMENTAL SERVICES TO INFORMAL SETTLEMENTS: SMITHFIELD RD WARD 34**

DETAILS

**RETAINING WALL DETAILS**

**MAP AFRICA CONSULTING**

SUITE ESS106 STRATHMORE PARK, 305 MUSGRAVE ROAD, MUSGRAVE, DURBAN  
e-mail : admin@mapafrica.co.za  
website : www.mapafrica.co.za  
FAX (031) 3092929 TEL (031) 3095831

DESIGNED	L.S	COPYRIGHT RESERVED	SCALES
DRAWN	K.G	PL	AS SHOWN
APPROVED	L.S	PL	DATE 2024.03.28

CONTRACT No. **4V-24407**

DRAWING No. **557/SMIT/904** REV **P1**

FOR TENDER