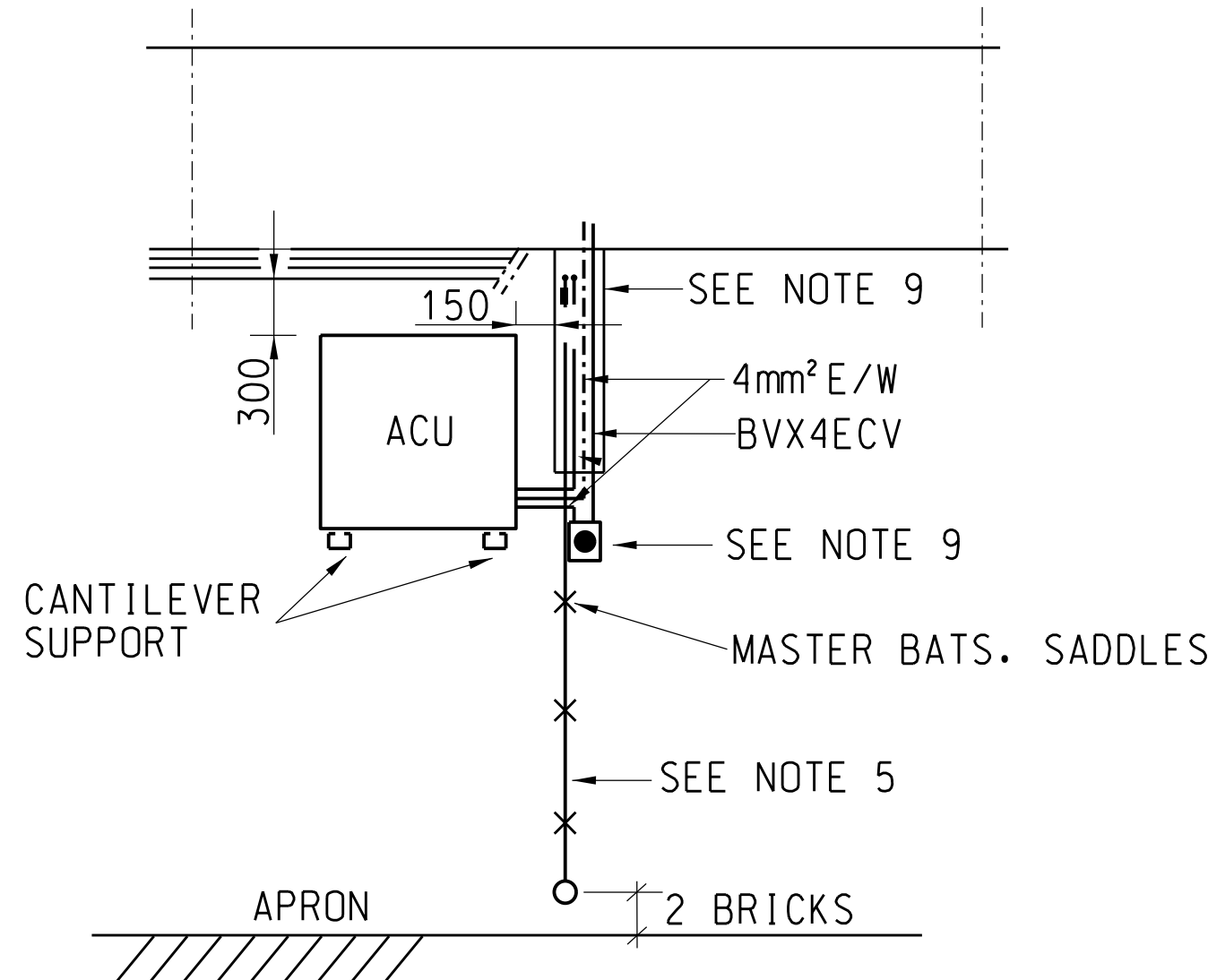
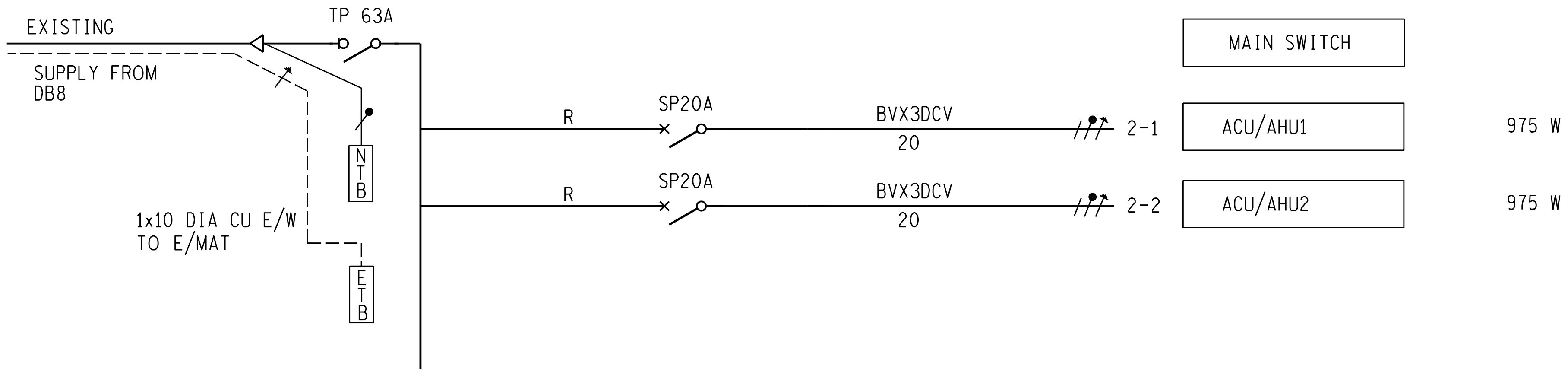


LABEL : DB2 400/230V AC						
FLUSH MOUNTED DB, COLOUR-GREY G29 TO SANS11091 WITH DOOR						
ELU'S	PHASE	MCB'S	CONDUCTOR SIZE mm <sup>2</sup>	CIRC No	LABEL	POINT No
			CONDUIT SIZE mm			



TYPICAL FRONT VIEW OF ACU 1&2  
N. T. S

ELECTRICAL LEGEND:  
(IN ACCORDANCE WITH NRS002)

- 16A DOUBLE SWITCH SOCKET OUTLET
- CIRCUIT BREAKER
- SWITCH-DISCONNECTOR
- CABLE GLAND WITH EARTH TAG
- EARTHSTUD
- TERMINALS



AIRCONDITIONING UNITS SCHEDULE:

PLAN REF	DESCRIPTION	COOLING CAPACITY	SUPPLIER	No A/C UNIT
ACU/AHU1 & 2	WALL MOUNTED UNIT WITH HEATPUMP	3.1KW		

NOTES

- ELECTRICAL INSTALLATION SHALL BE IN ACCORDANCE WITH:
  - SANS 10142
  - MODEL PREAMBLES FOR TRADES, SECTION 'S' ELECTRICAL WORK
  - TECHNICAL SPECIFICATION
- ALL WIRING SHALL BE CARRIED OUT USING PVC CABLES IN PVC CONDUITS TYPE OF INSTALLATION-FLUSH
- COLOUR OF LIGHT SWITCHES & SOCKET-OUTLET COVERS-WHITE
- POWER/CONTROL CABLES IN ROOF SPACE SHALL BE INSTALLED ON CABLE RACKING
- POWER/CONTROL CABLES AND REFRIGERANT PIPES IN ROOF SPACE IN CONTROL ROOM SHALL BE INSTALLED IN TRUNKING WITH COVERS
- POWER/CONTROL CABLES AND REFRIGERANT PIPES ON OUTSIDE WALLS SHALL BE INSTALLED IN TRUNKING WITH COVERS
- TRUNKING SHALL BE FABRICATED FROM 1mm SHEET STEEL, MEASURING 127x76,2 WITH CLIP-ON COVER, CORROSION PROTECTION: HOT-DIPPED GALVANISED TO SANS 1763. EXPOSED SURFACES ON OUTSIDE WALL SHALL BE BEIGE EPOXY-POWDER COATING
- CONTROL CABLES FROM REMOTE CONTROL UNITS TO HANDLING UNIT SHALL BE SURFACE MOUNTED WITHIN WHITE MINI TRUNKING ON WALL
- LIGHT DUTY CABLE TRAYS SHALL BE INSTALLED IN ROOF VOID WITH OVERALL WIDTH 50mm FOR CABLES & EARTH WIRE RUNNING FROM TRUNKING TO THE UNITS
- DRAIN PIPE FROM HANDLING UNITS SHALL BE POLYCOP PIPE WITH SUITABLE CONNECTOR, TYPE JG SPEEDFIT OR CONNEX, BETWEEN POLYCOP AND UNIT DRAIN PIPES. PVC TAPE IS NOT ACCEPTABLE. WATER SHALL BE DISCHARGED TO THE APRON SLAB (PIPE SHALL RUN IN TRUNKING, & ON OUTSIDE WALL FIXED ON MASTER BATS SADDLES & DISCHARGED 2 COURSE OF BRICKS ABOVE APRON SLAB & 200mm FROM WALL
- MOUNTING BRACKETS FOR OUTDOOR UNITS SHALL BE CANTILEVER SUPPORT ARMS TYPE OL-CAO FROM O-LINE OR EQUAL WITH STAINLESS STEEL BOLTS/WASHERS/NUTS
- ALL AIRCONDITIONING UNITS SHALL BE INSTALLED AS PER MANUFACTURERS INSTALLATION INSTRUCTIONS
- REMOVE FIVE WINDOW/WALL MOUNTED SPLIT TYPE UNITS IN THE OFFICES AND BOARD ROOM, FIX WALLS BY CLOSING THE HOLES WITH SUITABLE MATERIAL

FINAL DESIGN  
FOR CONSTRUCTION

1	AIRCON SCHEDULE REVISED		JA		AI	09/06/2025	
REV	REVISION DESCRIPTION		DRAWN	CHKD	AUTH	DATE	REFERENCE DRAWINGS
APPROVED BY			 <b>Eskom</b>			Eskom Holdings SOC Ltd Reg No 2002/015527/30	
AR NAUDE							
DATE 25/07/2024							
CHECKED BY							
SS SEBOSE							
DATE 25/07/2024							
DRAWN BY			<b>DINALEDI</b> OFFICE CONTAINERS ELECTRICAL INSTALLATION AND SCHEMATIC DIAGRAM				
AR NAUDE							
DATE 25/07/2024							
SCALE							
DIN23P07-SE-E49			SHEET NUMBER		REVISION		
			0		1		