

CCTV and ACCESS CONTROL - SITE INFORMATION

Document reference	Title	No of page
	This cover page	1
	<i>Employer's</i> Site Information	4
	Total number of pages	5

Table Of Contents

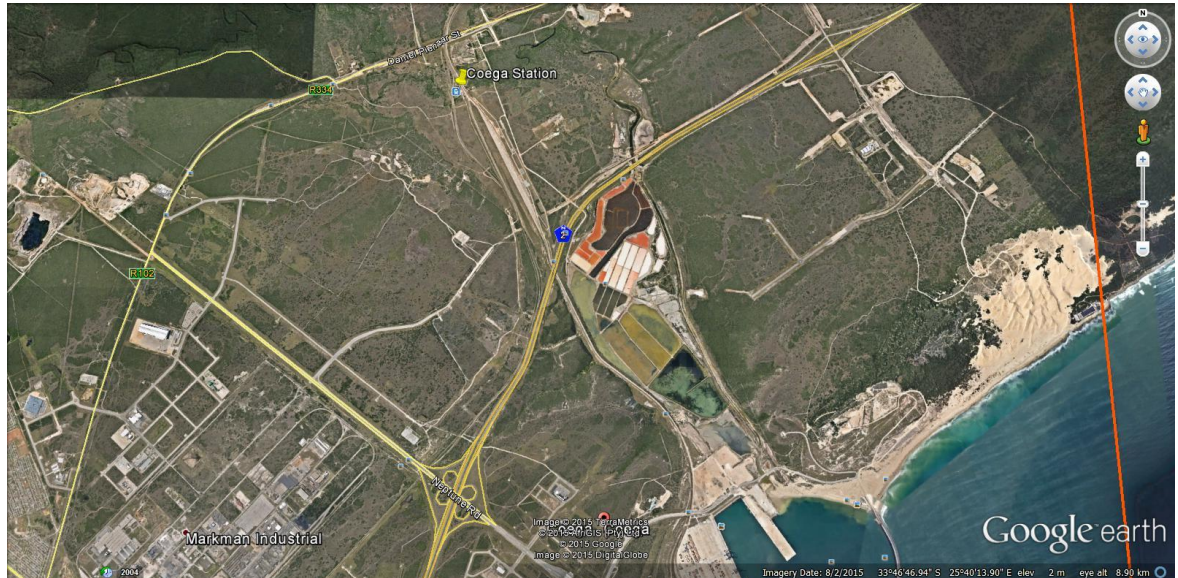
1. PURPOSE	3
2. LOCATION AND ACCESS	3
3. CLIMATIC CONDITIONS	3
3.1 Rainfall	3
3.2 Temperatures.....	3
3.3 Evaporation	4
3.4 Extreme Temperatures & Weather Conditions.....	4
3.5 Annual Wind Direction	4
3.6 Rainfall and Temperatures statistic for Port Elizabeth	5

1. PURPOSE

The purpose of this document is to provide information about the site and climatic condition to be expected on site for the *Contractor*.

2. LOCATION AND ACCESS

Port of Ngqura is located 9km North of Port Elizabeth in the Eastern Cape located in the Coega Industrial Development Zone and adjacent area. The approximate GPS co-ordinates of the site are 33°45'44.865S and 25°39'25.68E. Note that these co-ordinates do not represent a point of particular importance and are simply given to assist Contractors in locating the site and illustrated in Map below;



The N2 national road passes close to the site and access from this road to the site will be by means of the Neptune off-ramp via the Port Main Entrance toward the entrance next to the Harbour Rail line to Coega station.

3. CLIMATIC CONDITIONS

Port Elizabeth has been voted as having one of the best climates in the world, due to its pleasant conditions all year round. With an elevation of 60 metres above sea level, Port Elizabeth is located along the extensive South African coastline, and has the warm waters of the Indian Ocean lapping at its shores. As such, its climate is classified as being sub-tropical.

A sub-tropical climate is hot and slightly humid, but not quite as dramatically so as a tropical zone. Winters are generally cool to cold, but never present snow or frost.

3.1 Rainfall

In Port Elizabeth, rainfall occurs all year round, but is slightly heavier and more frequent during the winter months.

3.2 Temperatures

Winters present an average low temperature of about 8 to 14 degrees Celsius and daytime highs of approximately 18 degrees. Summertime highs can soar to 35 degrees Celsius, while night times are warm, at an average 22 degrees Celsius. The highest temperature ever recorded in Port Elizabeth was just less than 41 degrees, while the lowest temperature dropped to a below-freezing -0.5 degrees Celsius.

3.3 Evaporation

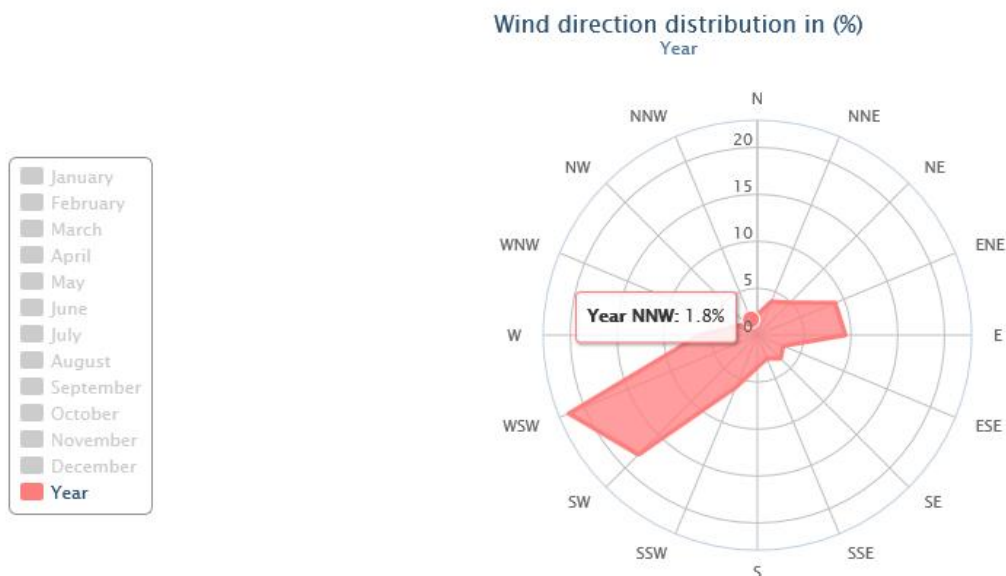
Mean annual evaporation is higher than the annual rainfall, which results in a net moisture deficit throw-out the year. (Average evaporation is in the order of 710mm per year)

3.4 Extreme Temperatures & Weather Conditions

August is the rainiest, wettest time of the year and January is generally the driest. Rainfall can become so heavy that the streets, valleys and residential areas of Port Elizabeth become completely flooded, endangering lives and destroying property. However, a much larger threat continues to be the unplanned fires that rage through the landscape in the dry heat of summer. These are responsible for the large-scale loss of property, animals and even people.

Port Elizabeth is also known as the “Windy City”. However, this refers mainly to the frequency of the wind, rather than to its force. Every day at about lunchtime, a breeze or light wind will begin to blow, cooling the air. Strong, gale-force winds do occur, mainly in summer, but are not frequent occurrences.

3.5 Annual Wind Direction



3.6 Rainfall and Temperatures statistic for Port Elizabeth

Month	Average Rainfall	Temperature Max	Temperature Min
January	4	23	17
February	8	23	17
March	6	21	16
April	11	20	15
May	8	20	13
June	14	19	11
July	11	18	11
August	15	18	12
September	9	18	12
October	13	19	13
November	13	20	15
December	5	21	16