



EDMS #

# TENDER BRIEFING PRESENTATION CONTRACT SANRAL N.002-216-2022/1

EASTERN REGION  
25 JANUARY 2023

**SANRAL**



BUILDING SOUTH AFRICA  
THROUGH BETTER ROADS

**N.002-216-2022/1**

**FOR THE ROUTINE MAINTENANCE OF ELECTRICAL LIGHTING  
INFRASTRUCTURE ON NATIONAL ROUTE N2 SECTION 21X TO 26  
– PACKAGE 1 (NON-TOLL)**

**Tender documents are available at no cost in electronic format  
downloadable from SANRAL website [https://www.nra.co.za/service-  
provider-zone/tenders/open-tenders/](https://www.nra.co.za/service-provider-zone/tenders/open-tenders/)**

**Tenderers must have access to Microsoft Office © 2013 and Acrobat  
Adobe © 9.0, or similar compatible software.**

# 1. WELCOME & INTRODUCTION

**SANRAL**



BUILDING SOUTH AFRICA  
THROUGH BETTER ROADS



## 2. IMPORTANT DATES

**SANRAL**



BUILDING SOUTH AFRICA  
THROUGH BETTER ROADS

## IMPORTANT DATES

<p>SUBMISSION OF FORM A1.1</p> <p><b>NB:</b> Failure to submit this certificate would result in the tenderer not receiving addenda or additional issued information and may result in the tenderer being non-responsive.</p>	<p><b>MONDAY, 23 JANUARY 2023</b></p>
<p>SUBMISSION OF QUERIES</p>	<p><b>FRIDAY, 03 FEBRUARY 2023</b></p>
<p>TENDER CLOSING DATE</p>	<p><b>TUESDAY, 14 FEBRUARY 2023</b></p>



# **3. TENDERING PROCEDURES**

## **T1.1: TENDER NOTICE AND INVITATION TO TENDER**

## PREQUALIFICATION REQUIREMENTS

### PREQUALIFICATION REQUIREMENTS FOR THIS CONTRACT

PROJECT NUMBERS	MINIMUM
B-BBEE Level	Only tenderers with a B-BBEE contributor status level of 1, 2, 3 or 4 and who is a QSE are eligible to tender.
CSD	Only tenderers who are registered on the National Treasury Central Supplier Database, are eligible to tender.
CIDB	It is estimated that tenderers should have a CIDB contractor grading designation of 7EP or higher, however tenderers attention is drawn to clause 4.1.1 of the Tender Data when submitting their tender.

## T1.1 SUB-CONTRACTING REQUIREMENTS

### COMPULSORY SUBCONTRACTING TARGET

<b>Tendering entity less than 51% black ownership</b>	<b>Min 40% subcontract to Targeted Enterprises</b>
<b>Tendering entity at least 51% black ownership</b>	<b>Min 35% subcontract to Targeted Enterprises</b>
<b>Tendering entity at least 51% black women owned or black youth owned</b>	<b>Min 30% subcontract to Targeted Enterprises</b>



## T1.1 ENQUIRES

Queries relating to issues arising from these documents may be addressed to the following:

<b>ALL ENQUIRIES - N.002-216-2022/1</b>	
Contact person:	Procurement Manager
E-mail	<a href="mailto:ProcurementER2@sanral.co.za">ProcurementER2@sanral.co.za</a>



# 3. TENDERING PROCEDURES

## T1.2: TENDER DATA

## CONDITIONS OF TENDER

**The Conditions of Tender are the Standard Conditions of Tender as contained in SANS 10845-3:2015 Edition 1.**

**SANS 10845-3:2015 Edition 1 is obtainable from SABS Standards Division, 1 Dr Lategan Road, Groenkloof or Private Bag X191, Pretoria, 0001. Tel: +27 12 428 7911 Fax: +27 12 344 1568. website: [www.sabs.co.za](http://www.sabs.co.za).**

## TENDER DATA

Each item of data given is cross-referenced to the clause in the Standard and Special Conditions of Tender to which it mainly applies. The Tender Data shall have precedence in the interpretation of any ambiguity or inconsistency between it and the standard/special conditions of tender.

CLAUSE NUMBER	TENDER DATA
1.1	<p>The Employer is The South African National Road Agency SOC Limited (SANRAL). The Employer's domicilium citandi et executandi (permanent physical business address) is:</p> <p>48 Tambotie Avenue Val de Grace Pretoria, 0184</p>



## TENDER DATA- N.002-216-2022/1

CLAUSE NUMBER	TENDER DATA
1.4	<p>The Employer's Agent is the Procurement Manager</p> <p>They can be contacted at: <a href="mailto:ProcurementER2@sanral.co.za">ProcurementER2@sanral.co.za</a></p>
1.5	<p><b>The tender process may be cancelled if:</b></p> <ul style="list-style-type: none"><li>• Due to changed circumstances, there is no longer a need for the goods or services specified in the invitation;</li><li>• Funds are no longer available to cover the total envisaged expenditure;</li><li>• No acceptable tender is received; or</li><li>• There is a material irregularity in the tender process</li></ul> <p>The period of six months is not applicable.</p>

## TENDER DATA

2.1

**Only those Tenderers who satisfy the following criteria are eligible to submit tenders:**

**a) Criteria for preferential procurement**

Tenderers that have a B-BBEE contributor status level of 1, 2, 3 or 4, and who is a QSE, are eligible to tender.

Tendering Entity must confirm the composition of the Tendering entity (consortium, joint venture, or company). Tenderers comprising joint ventures, consortia or the like, shall submit signed agreements between their Members regulating their relationship, to the Employer, together with their Tender Offer.

The tenderer shall submit a valid B-BBEE certificate in compliance with Tender Data 3.11.8 as proof of eligibility.

Failure to satisfy the above eligibility criteria is a breach of the Conditions of Tender and as such, will result in a non-eligible tender.

**b) National Treasury Central Supplier Database (Form A3.4)**

Tenderers, or in the event of a Joint Venture, each member of the Joint Venture, shall be registered on the National Treasury Central Supplier Database at the closing date for tender submissions. Tenders received from such tenderers who do not comply with this requirement, will be declared non-responsive. If not registered as verified online at tender closing, the tender will be declared as non-responsive.

## TENDER DATA

2.1 Cont

### **c) Construction Industry Development Board Registration**

Tenderers registered as potentially emerging enterprises but with a CIDB contractor grading designation lower than a contractor grading designation determined in accordance with the sum tendered, or a value determined in accordance with Regulation 25(1B) or 25(7A) of the Construction Industry Development Regulations, are not eligible to have their tenders evaluated.

### **d) Tenderer's Minimum Experience and Key Personnel (Forms C3, C4,C5,C6, C7 and C8)**

The minimum requirements with regards to qualification, registration and experience in the electrical maintenance field, for the Contractor's key personnel shall be as indicated in the table below, according to the CIDB contractor grading designation determined for the contract. The tenderer must complete Forms C3, C4, C5, C6 C7 and C8 relating to its organizational structure and key personnel.

Where the key personnel are no longer available to undertake the necessary work after the award of the tender, the contractor shall within a period of 14 working days replace the key personnel listed in Forms C3, C4, C5, C6 C7 and C8 with personnel with equivalent competencies and subject to approval by the Employer. Such approval shall not be unreasonably withheld.

Failure to comply with the requirements for key personnel or to complete Forms C3, C4, C5, C6 C7 and C8, may render the tender non-responsive.

## TENDER DATA

### 2.1 Cont

#### e) Local production and content (Forms A3.5 and A3.6)

##### i) Steel

Only locally produced or locally manufactured steel products and components for construction with a minimum threshold for local content and production as stipulated below will be considered.

Minimum local content for Steel Value-added Products

Steel Construction Materials	Components	Local Content Threshold
Fabricated Structural Steel	Lighting poles and Structures	100%

In the designation, imported inputs raw materials (i.e. zinc and additives in the surface preparation and protection process (cleaning and coating/galvanising)) used in the production of steel products and components for the construction are deemed as locally manufactured input materials. production of steel products and components for the construction are deemed as locally manufactured input materials.

The imported input raw material, as specified above, used in the manufacture and production of steel products and components for construction will be deemed to have been sourced locally for the purposes of calculating local content.



## TENDER DATA

### 2.1 Cont

#### ii) Electrical and telecommunication cables

Only locally produced or locally manufactured electrical and telecommunication cables for construction with a minimum threshold for local content and production as stipulated below will be considered.

Electrical Cables: cables used for power transmission

Cable Products	Stipulated minimum threshold
Low Voltage	90%
Low Cost Reticulation	90%
Medium & High Voltage	90%

Excluded in the designation are mainly primary steel, copper, aluminium, polyvinyl chloride (PVC), cross-linked polyethylene (XLPE), aramid yarn, and optical fibre used for fabrication of cable products. This is to encourage local manufactures to seek the best global competitive prices for primary materials hence the competitive imported materials used in the manufacture of cables will be deemed to have been sourced locally for the purposes of calculating local content.

The tenderer shall complete the Declaration Certificate for Local Production and Content (Form A3.5) and the Local Content Declaration: Summary Schedule (Form A3.6) for each product.

Failure to meet the stipulated minimum threshold for local production and content will render the tender non responsive.

## TENDER DATA

2.7	<p>The clarification briefing presentation is available on the following <a href="https://www.nra.co.za/service-provider-zone/tenders/open-tenders/">https://www.nra.co.za/service-provider-zone/tenders/open-tenders/</a> In addition, a non-compulsory clarification briefing meeting will be held via a virtual platform on Friday 09 July 2021 at 09:00AM when the Supply Chain Management requirements will be presented for the project followed by a presentation of the Scope of Works. A link to the clarification briefing meeting will be sent to tenderers who completed and submitted a Certificate of Intention to Submit a Tender (Form A1.1) meeting</p> <p>The onus rests with the tenderer to ensure that the representative reading the clarification briefing presentation is appropriately qualified to understand all directives and clarifications given in the presentation.</p> <p>The signature on the duly completed and signed Form A1 shall be considered proof that the tenderer read the whole clarification briefing presentation and clearly understood all directives and clarifications given in the presentation.</p>
2.8	Request clarifications at least <b>7 (seven) working days before the closing time.</b>
2.9	<b>No insurance is provided by the Employer.</b>
2.10	Tenderers are required to state the rates and currencies <b>in Rand.</b>
2.12	<b>Alternative offers are not acceptable.</b>

## TENDER DATA

CLAUSE NUMBER	TENDER DATA
2.13.5	<p>The Employer's address for delivery of tender offers and identification details to be shown on tender offer package are:</p> <p>TENDERER: .....</p> <p>CONTRACT NUMBER: <b>N.002-216-2022/1</b></p> <p>CONTRACT DESCRIPTION: <b>FOR THE ROUTINE MAINTENANCE OF ELECTRICAL LIGHTING INFRASTRUCTURE ON NATIONAL ROUTE N2 SECTION 21X TO 26 - PACKAGE 1 (NON-TOLL)</b></p> <p><b>(TENDERER'S AUTHORISED REPRESENTATIVE'S NAME:)</b> .....</p> <p><b>(TENDERER'S POSTAL ADDRESS:)</b> .....</p> <p><b>(TENDERER'S CONTACT NUMBERS:)</b> .....</p> <p><b>(CLOSING DATE: TUESDAY, 14 FEBRUARY 2023)</b></p> <p><b>(CLOSING TIME: 11:00 AM)</b></p> <p>Location of tender box : Eastern Region Reception The South African National Roads Agency SOC Ltd 58 Van Eck Place Mkondeni, Pietermaritzburg</p> <p>Tenders must be submitted during hours (09:00 to 16:00) Monday to Friday at the Employer's address.</p> <p><b>It is in the tenderer's interest to ensure that the delivery of the tender offer is recorded in the Employer's tenders received register and deposited in the tender box.</b></p> <p><b>TENDERERS TO ADHERE TO EMPLOYER'S COVID 19 HEALTH AND SAFETY MEASURES WHEN SUBMITTING TENDERS.</b></p>

## TENDER DATA

CLAUSE NUMBER	TENDER DATA
2.13.5	The closing time for submission of tender offers is 11h00 hours on <b>TUESDAY, 14 FEBRUARY 2023.</b>



## TENDER DATA

CLAUSE NUMBER	TENDER DATA
2.16.1	The tender offer validity period is 180 days
2.16.3	<p>Where a tenderer, at any time after the opening of his tender offer but prior to entering into a contract based on his tender offer:</p> <ul style="list-style-type: none"> <li><b>a) withdraws his tender;</b></li> <li><b>b) gives notice of his inability to execute the contract in terms of his tender; or</b></li> <li><b>c) fails to comply with a request made in terms of 4.17, 4.18 or 5.9,</b></li> </ul> <p>such tenderer shall be barred from tendering on any of the Employer's tenders for a period to be determined by the Employer, but not less than six (6) months from a date determined by the Employer. This sanction also applies to tenders under evaluation and not yet awarded. This sanction does not apply to tenders under evaluation where a request for extension of the validity period was not accepted by the tenderer. The Employer may fully or partly exempt a tenderer from the provisions of this condition if he is of the opinion that the circumstances justify the exemption.</p>

## TENDER DATA

CLAUSE NUMBER	TENDER DATA
2.18.1	Any additional information requested under this clause must be provided within 5 (five) working days of date of request.
3.1.1	The Employer shall respond to clarifications received up to <b>03 FEBRUARY 2023</b>
3.2	The employer shall issue addenda until 5 (five) working days before tender closing time.

## TENDER DATA

CLAUSE NUMBER	TENDER DATA
3.4	<p>The opening will be live streamed to all the tenderers during the tender opening</p> <p>The time and location for opening of the tender offers are: Time: 11:00 on Tuesday, 14 February 2023 Venue: The tender opening can be viewed via live streaming at a link to be submitted to tenderers who submit Form A1.1.</p>
3.7	<p>Prior to disqualification, the Employer shall inform the tenderer and give the tenderer an opportunity to make representations within 14 (fourteen) days as to why the tender submitted should not be disqualified and as to why the tenderer should not be restricted by the National Treasury from conducting any business with any organ of state for a period not exceeding 10 years.</p> <p>In the event of disqualification, the Employer may, at its sole discretion, claim damages from the tenderer and impose a specified period during which tender offers will not be accepted from the offending tenderer, and the Employer shall inform National Treasury and CIDB in writing.</p>

## TENDER DATA

CLAUSE NUMBER	TENDER DATA
3.9	<p data-bbox="311 468 1785 511"><b>Arithmetical errors, omissions, discrepancies and imbalanced unit rates</b></p> <p data-bbox="311 518 1862 718">Check responsive tenders for discrepancies between amounts in words and amounts in figures. Where there is a discrepancy between the amounts in figures and the amount in words, the amount appearing in the summary to the Pricing Schedule shall govern.</p> <p data-bbox="311 775 977 818">Check responsive tender offers for:</p> <ul data-bbox="311 825 1837 1175" style="list-style-type: none"><li>a) the gross misplacement of the decimal point in any unit rate;</li><li>b) omissions made in completing the pricing schedule or bills of quantities; or</li><li>c) arithmetic errors in:<ul data-bbox="421 975 1818 1118" style="list-style-type: none"><li>i) line item totals resulting from the product of a unit rate and a quantity in bills of quantities or schedules of prices; or</li><li>ii) the summation of the prices.</li></ul></li><li>d) imbalanced unit rates.</li></ul> <p data-bbox="311 1232 1862 1318"><b>Notify shortlisted tenderers of all errors, omissions or imbalanced rates that are identified in their tender offers.</b></p>

## TENDER DATA

CLAUSE NUMBER	TENDER DATA
3.9 Continued	<p>Where the tenderer elects to confirm the errors, omissions or re-balancing of imbalanced rates the tender offer shall be corrected as follows:</p> <ul style="list-style-type: none"> <li>a) If bills of quantities or pricing schedules apply and there is an error in the line item total resulting from the product of the unit rate and the quantity, the unit rate shall govern, and the line item total shall be corrected. Where there is an obviously gross misplacement of the decimal point in the unit rate, the line item total as quoted, and the unit rate shall be corrected.</li> <li>b) Where there is an error in the total of the prices either as a result of other corrections required by this checking process or in the tenderer's addition of prices, the total of the prices shall be corrected.</li> <li>c) Where the unit rates are imbalanced adjust such rates by increasing or decreasing them and selected others while retaining the total of the prices derived after any other corrections made under (a) and (b) above.</li> </ul> <p>Where there is an omission of a line item, no correction is possible and the offer may be declared non-responsive.</p> <p>Declare as non-responsive and reject any offer from a tenderer who elects not to accept the corrections proposed and subject the tenderer to the sanction under 2.16.2.</p>

## TENDER DATA

CLAUSE	TENDER
3.11.1	<p>The procedure for the evaluation of responsive tenders is Method 3.</p> <p>If two or more tenders score the same number of points and these tenders are also the highest ranked tenders, <b>the tenderer with the highest preference points will be recommended for award.</b></p> <p>If functionality is part of the evaluation process and two or more tenders score equal total points and equal preference points, <b>the tender that scored the highest points for functionality will be recommended for award.</b></p> <p>If two or more tenders score the same number of financial points and preference points and these tenders are also the highest ranked tenders, <b>the tenderer to be recommended for award will be decided by the drawing of lots.</b></p>



## TENDER DATA

CLAUSE	TENDER
3.11.7	<p>The value of W1 is:</p> <ol style="list-style-type: none"><li>1) 90 where the financial value, inclusive of VAT, of the lowest responsive tender offer received has a value in excess of R50 000 000,00; or</li><li>2) 80 where the financial value, inclusive of VAT, of the lowest responsive tender offer has a value that equals or is less than R50 000 000,00.</li></ol> <p>The value of A will be calculated utilising the following formula:</p> $A=(1-(P-P_m)/P_m)$ <p>Where P is the comparative offer of the tender offer under consideration and P<sub>m</sub> is the comparative offer of the most favourable comparative offer</p> <p>In the event that the calculated value is negative, the allocated score shall be 0.</p>

## TENDER DATA

CLAUSE	TENDER
3.11.8	Points awarded will be according to a tenderer's <b>B-BBEE status level of contributor</b> and summarised in the table below:

## TENDER DATA

3.11.8

**B-BBEE Status Level  
of contributor**

**Number of Points for  
financial value up to and  
including  
R50 000 000**

**Number of Points for  
financial value above  
R50 000 000**

1

20

10

2

18

9

3

14

6

4

12

5

5

8

4

6

6

3

7

4

2

8

2

1

Non-compliant  
contributor

0

0

## TENDER DATA

3.11.8  
(continued)

**Eligibility for preference points is subject to the following conditions:**

1. A tenderer's scorecard shall be a B-BBEE Certificate issued in accordance with:
  - the amended Construction Sector Codes published in Notice 931 of 2017 of Government Gazette No. 41287 on 1 December 2017 by the Department of Trade and Industry.
  - In the event that the Measured Entity operates in more than one sector or a sub-sector, the scorecard for the sector or sub-sector in which the majority of its core activities (measured in terms of annual revenue) are located will be acceptable. The tenderer must comply with the annual revenue thresholds for EME or QSE or Generic in accordance with the amended Construction Sector Codes.
2. The scorecard shall be submitted as a certificate attached to Returnable Schedule Form A13; and

## TENDER DATA

3.11.8  
(continued)

3. The certificate shall:

- be valid at the tender closing date; and
- have been issued by a verification agency accredited by the South African National Accreditation System (SANAS); or
- be in the form of a sworn affidavit in the case of an Exempted Micro Enterprise (EME) with a total annual revenue of less than R3 million if issued in accordance with the amended Construction Sector Codes published in Notice 931 of 2017 of Government Gazette No. 41287 on 1 December 2017 by the Department of Trade and Industry; and
- have a date of issue less than 12 (twelve) months prior to the original advertised tender closing date (see Tender Data C.2..15); and

## TENDER DATA

3.11.8  
(continued)

4. Compliance with any other information requested to be attached to Returnable Schedule Form C1; and
5. In the event of an un-incorporated joint venture (JV), a project-specific (SANRAL project number indicated) valid consolidated B-BBEE verification certificate in the name of the JV, issued by a verification agency accredited by the South African National Accreditation System (SANAS) shall be submitted, as well as the individual B-BBEE verification certificates for each member of the JV on which the JV certificate was calculated; and
6. If the tender documents indicate that the tenderer intends subcontracting more than 25% of the value of the contract to any other person not qualifying for at least the status level that the tenderer qualifies for, 0 (zero) points for preference shall be awarded, unless the intended subcontractor is an EME that has the capability to execute the subcontract and the value of the work is below the EME threshold.



## TENDER DATA

3.11.8  
(continued)

7. In the event of failure to submit a valid verification certificate(s) and/or all the information in compliance to Returnable Schedule Form A13, the sanctions of Tender Data 4.1.1 will be applied; and

8. If the tender documents indicate that the tenderer intends subcontracting more than 25% of the value of the contract to any other person not qualifying for at least the status level that the tenderer qualifies for, 0 (zero) points for preference shall be awarded, unless the intended subcontractor is an EME that has the capability to execute the subcontract and the value of the work is below the EME threshold. Returnable Schedule Form B3 needs to be completed indicating any additional subcontracting not forming part of the Contract Participation Goal (CPG).

## TENDER DATA

5.13	<p>The conditions stated in clauses 5.13(a) to (f) of the Conditions of Tender as well as the following additional clauses 5.13(g) to (k) shall be applied as objective criteria in terms of section 2(1)(f) of the Preferential Procurement Policy Framework Act, 2000 (Act No 5 of 2000) and as compelling and justifiable reasons in terms of Conditions of Tender clause 5.11:</p> <ul style="list-style-type: none"><li>g) the tenderer or any of its directors is not listed on National Treasury's Register of Tender Defaulters or Restricted Suppliers, or the Employer's database, in terms of the Prevention and Combating of Corrupt Activities Act, 2004 (Act No 12 of 2004) as a tenderer or person prohibited from doing business with the public sector;</li><li>h) the tenderer has not abused the Employer's supply chain management system; and</li><li>i) the tenderer has not failed to perform on any previous contract and has not been given a written notice to this effect.</li><li>j) the tenderer is tax compliant. The recommended tenderer who becomes non-compliant, prior to award, shall be notified and must become compliant within 7 working days of the date of being notified.</li></ul> <p><b>A recommended tenderer who remains non-compliant after the 7 working days of being notified, shall be declared non-responsive.</b></p>
------	---

## TENDER DATA

5.13	<p>k) the tenderer is registered and in good standing with the compensation fund or with a licensed compensation insurer. The licensed compensation insurer shall be approved by Department of Labour in terms of Section 80 of the Compensation for Injury and Disease Act, 1993 (Act No. 130 of 1993).</p> <p>In addition to the requirements under paragraph (b) of the Conditions of Tender, in the event that a due diligence is performed as part of the tender evaluation, the due diligence report will be used to evaluate the tenderer's ability to perform the contract as stated in paragraph (b). The due diligence will evaluate the overall risk associated with the tender. The due diligence will take into consideration the following:</p> <ul style="list-style-type: none"><li>Assessment of financial statements to assess the financial position of the tenderer and its ability to obtain the necessary guarantees or insurances,</li><li>Evaluation of managerial and technical ability &amp; available resources in relation to the proposed tender,</li><li>Integrity Risk Evaluation,</li><li>Operations, Activities, Locations and Key Customers,</li><li>Reference checks from previous clients, and</li><li>Risk rating (i.e. High Risk, Medium to High risk, Medium risk or Low risk) of the tenderer</li></ul>
------	---

## TENDER DATA

5.13 (cont.)

In addition to the requirements under paragraph (b) of the Conditions of Tender, in the event that a due diligence is performed as part of the tender evaluation, the due diligence report will be used to evaluate the tenderer's ability to perform the contract as stated in paragraph (b). The due diligence will evaluate the overall risk associated with the tender.

**The due diligence will take into consideration the following:**

- Assessment of financial statements to assess the financial position of the tenderer and its ability to obtain the necessary guarantees or insurances,
- Evaluation of managerial and technical ability & available resources in relation to the proposed tender,
- Integrity Risk Evaluation,
- Operations, Activities, Locations and Key Customers,
- Reference checks from previous clients, and
- Risk rating (i.e. High Risk, Medium to High risk, Medium risk or Low risk) of the tenderer

## TENDER DATA

5.13  
(Cont)

- Past Contracts comprising the following quantities of work completed satisfactorily and certified by the Engineer to demonstrate capacity and capability in relation to the proposed tender:
  - Similar National, Provincial or Municipal infrastructure projects
  - Similar size projects
  - Similar period infrastructure maintenance projects

## TENDER DATA

3.16	SANRAL will notify unsuccessful tenderers when the tender process has been concluded. Any unsuccessful tenderer may request a debriefing in writing as specified in clause 3.19.
------	--



## TENDER DATA

3.19	All requests shall be in writing.
<b>Additional conditions of tender clauses:</b>	
SC3.19	<b>Jurisdiction</b>  Unless stated otherwise in the Tender Data, each tenderer and the Employer undertake to accept the jurisdiction of the law courts of the Republic of South Africa.

# 3. TENDERING PROCEDURES

## PART T2: RETURNABLE SCHEDULES

**SANRAL**



BUILDING SOUTH AFRICA  
THROUGH BETTER ROADS

## PART T2: RETURNABLE SCHEDULES

### Notes to tenderer:

1. Returnable documents have been based on the SANS for Construction Procurement and incorporate National Treasury requirements contained in their Standard Bidding Document (SBD) within them.  
Returnable documents are separated into the following categories:
  - (i) Forms, certificates and schedules for completion by the tenderer for use in the quantitative and qualitative evaluation of the tender (Forms A to C).
  - (ii) A list of all returnable documents for completion by the tenderer (Form D1).
2. **Failure to submit fully completed relevant returnable documents may render such a tender offer non-responsive.**
3. Tenderers shall note that their signatures appended to each returnable form represents a declaration that they vouch for the accuracy and correctness of the information provided, including the information provided by candidates proposed for the specified key positions.
4. Notwithstanding any check or audit conducted by or on behalf of the Employer, the information provided in the returnable documents is accepted in good faith and as justification for entering into a contract with a tenderer. If subsequently, any information is found to be incorrect such discovery shall be taken as wilful misrepresentation by that tenderer to induce the contract. In such event the Employer has the discretionary right under FIDIC Particular Condition 15.2 (g) to terminate the contract.
5. These forms must be completed electronically, and any alterations made prior to tender closure countersigned by an authorized signatory.

## PART T2: LIST OF RETURNABLE DOCUMENTS

FORM	LIST OF RETURNABLE DOCUMENTS	STATUS
FORM A1:	CERTIFICATE CONFIRMING THAT THE TENDERER READ THE PRESENTATION	
FORM A1.1	CERTIFICATE ON INTENTION TO SUBMIT A TENDER	
FORM A2.1:	CERTIFICATE OF AUTHORITY FOR SIGNATORY	
FORM A2.2:	DECLARATION OF TENDERER'S CURRENT STATUS OF ANY DEBT OUTSTANDING TO SANRAL	
FORM A2.3:	CERTIFICATE OF SINGLE TENDER SUBMISSION	
FORM A2.4:	CERTIFICATE OF FRONTING PRACTICES	
FORM A2.5:	DECLARATION FORM - MANAGEMENT OF DOMESTIC PROMINENT INFLUENTIAL PERSONS, FOREIGN PROMINENT PUBLIC OFFICIALS AND FOREIGN INFLUENTIAL NATIONALS	
FORM A2.6:	CERTIFICATE OF PERMISSION TO CONDUCT DUE DILIGENCE INVESTIGATION	
FORM A3.1 (SBD4):	COMPULSORY DECLARATION	CONTRACT
FORM A3.2 (SBD9):	CERTIFICATE OF INDEPENDENT TENDER	REPEALED
FORM A3.3 (SBD8):	DECLARATION OF TENDERER'S PAST SUPPLY CHAIN MANAGEMENT PRACTICES	CONTRACT

## PART T2: LIST OF RETURNABLE DOCUMENTS

FORM	LIST OF RETURNABLE DOCUMENTS	STATUS
FORM A3.4:	REGISTRATION ON NATIONAL TREASURY CENTRAL SUPPLIER DATABASE	CONTRACT
FORM A3.5 (SBD6.2):	DECLARATION CERTIFICATE FOR LOCAL PRODUCTION AND CONTENT FOR DESIGNATED SECTORS	CONTRACT
FORM A3.6:	LOCAL CONTENT DECLARATION: SUMMARY SCHEDULE (ANNEXURE C)	CONTRACT
FORM A4:	SCHEDULE OF DEVIATIONS OR QUALIFICATIONS BY TENDERER	
FORM A5:	SCHEDULE OF ADDENDA TO TENDER DOCUMENTS	
FORM A6 (SBD2):	CERTIFICATE OF TAX COMPLIANCE	CONTRACT
FORM A7:	CERTIFICATE OF INSURANCE COVER	CONTRACT
FORM A8:	TENDERER'S REGISTERED FINANCIAL SERVICE PROVIDER LETTER AND BANK DETAILS	
FORM A9:	DECLARATION OF TENDERER'S LITIGATION HISTORY	
FORM A10:	SCHEDULE OF CURRENT TENDERS	
FORM A11:	CERTIFICATE OF COMPLIANCE WITH COMPENSATION FOR OCCUPATIONAL INJURIES AND DISEASES ACT,1993	CONTRACT

## PART T2: LIST OF RETURNABLE DOCUMENTS

FORM	LIST OF RETURNABLE DOCUMENTS	STATUS
FORM A12:	REGISTRATION WITH CIDB	CONTRACT
FORM A13 (SBD6.1):	PREFERENCING SCHEDULE - TENDERER'S B-BBEE VERIFICATION	CONTRACT
FORM A14:	INVITATION TO BID (SBD1)	CONTRACT
FORM A15	SITE LIGHTING DESIGN PROPOSAL	
FORM A16	LIFE CYCLE COST TABLE (MAINTENANCE, INSTALLATION, AND ENERGY COST)	
FORM A17	SCHEDULE OF SECURITY SYSTEMS RETURNABLE	
FORM B1:	SCHEDULE OF WORK EXPERIENCE	
FORM B2:	SCHEDULE OF CONTRACTOR'S EQUIPMENT	
FORM B3:	SCHEDULE OF SPECIALIST SUBCONTRACTORS	



FORM A1: CERTIFICATE CONFIRMING THAT THE TENDERER READ THE PRESENTATION

SOUTH AFRICAN NATIONAL ROADS AGENCY SOC LIMITED

CONTRACT SANRAL N.002-216-2022/1

FOR THE ROUTINE MAINTENANCE OF ELECTRICAL LIGHTING INFRASTRUCTURE ON  
NATIONAL ROUTE N2 SECTION 21X TO SECTION 26 – PACKAGE 1 (NON-TOLL)

Note to tenderer:

1. To confirm viewing of tender, tender presentation by the Employer online

2. This is to certify that I, .....

representative of (tenderer) .....

of (address) .....

telephone number .....

fax number .....

e-mail .....

read/viewed the clarification presentation/ presented by the Employer online.

TENDERER'S REPRESENTATIVE (Signature) .....

RETURABLE SCHEDULE  
FORM A1

CERTIFICATE OF ATTENDANCE A  
CLARIFICATION MEETING

**NB: TO BE COMPLETED AND  
SUBMITTED WITH THE TENDE**

FORM A1.1: CERTIFICATE OF INTENTION TO SUBMIT A TENDER

CONTRACT SANRAL N.002-216-2022/1

FOR THE ROUTINE MAINTENANCE OF ELECTRICAL LIGHTING INFRASTRUCTURE ON  
NATIONAL ROUTE N2 SECTION 21X TO SECTION 26 – PACKAGE 1 (NON-TOLL)

Notes to Tenderer:

The duly completed certificate of intention to submit a tender must be submitted by whoever intends to tender for this particular tender within seven (7) days from the date the tender is advertised. Failure to submit the certificate of intention to tender within the required period may render the tenderer non-responsive and SANRAL does not accept responsibility for any communication not received by the tenderer timeously.

Late notification of intention to tender by a prospective tenderer will not necessarily result in the tender closing date being extended.

Should you intend to submit a tender for this particular tender please sign the certificate, scan and email the completed document to the email address indicated in T1.1 of this tender document.

The Employer shall send all correspondence, including Addenda, only to the Tenderer's email address as provided herein.

This is to certify that I, .....

representative of (insert name of tenderer) .....

of (address) .....

telephone number .....

fax number .....

e-mail .....

intends to submit a tender in response to the tender notice and invitation for tender this contract.

TENDERER'S REPRESENTATIVE ..... Date .....

(Signature)

RETURNABLE SCHEDULE  
FORM A1.1

CERTIFICATE OF INTENTION TO  
SUBMIT A TENDER

**NB:TO BE COMPLETED AND  
SUBMITTED PRIOR THE 23  
JANUARY 2023**

## FORM A2.1: CERTIFICATE OF AUTHORITY FOR SIGNATORY

### Notes to tenderer:

1. **The signatory for the tenderer shall confirm his/her authority thereto by attaching on the tendering company's letterhead a duly signed and dated copy of the relevant resolution of the board of directors/partners.**
2. **In the event that the tenderer is a joint venture, a certificate is required from each member of the joint venture clearly setting out:**
  - authority for signatory,
  - undertaking to formally enter into a joint venture contract should an award be made to the joint venture,
  - name of designated lead member of the intended joint venture, as required by tender condition 2.13.4.
3. **The resolution below is given as an example of an acceptable format for authorisation, but submission of this page with the example completed shall not be accepted as authorisation of the tenderer's signatory.**

**FORM A2.2: DECLARATION OF  
TENDERER'S CURRENT STATUS OF  
ANY DEBT  
OUTSTANDING TO SANRAL**

**FORM A2.2: DECLARATION OF TENDERER'S CURRENT STATUS OF ANY DEBT OUTSTANDING  
TO SANRAL**

**SOUTH AFRICAN NATIONAL ROADS AGENCY SOC LIMITED**

**CONTRACT SANRAL N.002-216-2022/1**

**FOR THE ROUTINE MAINTENANCE OF ELECTRICAL LIGHTING INFRASTRUCTURE ON  
NATIONAL ROUTE N2 SECTION 21X TO SECTION 26 – PACKAGE 1 (NON-TOLL)**

**Notes to tenderer:**

**The signatory for the tenderer shall complete and sign this form declaring the current status  
of (any) debt outstanding to SANRAL.**

**If the tenderer is a joint venture, a declaration is required from each member of the Joint  
Venture.**

I, the undersigned, .....declare that:

the tenderer or any of its Directors/Members do not have any debt outstanding to SANRAL, other than  
what is listed below:

Please provide the details:

.....  
.....  
.....

the tenderer and/or any of its Directors/Members freely, voluntarily and without undue duress  
unconditionally authorises the SANRAL to set off any debt agreed to which is due and payable by the  
tenderer or any of its Directors/Members in terms of this declaration, against any moneys due to the  
tenderer or any of its Directors/Members; and

to the best of my knowledge the above information is true and accurate.

SIGNATURE: .....

Signed and sworn before me at .....

on the .....day of ..... 20 .....

The deponent having:  
acknowledged that he/she knows and understands the contents hereof;  
confirmed that he/she has no objection to the taking of the prescribed oath;  
that he/she considered the prescribed oath as bidding upon his/her conscience; and  
the Regulations contained in the Government Gazette Notice R1258 of July 1972 and R1648 of August  
1977 having been complied with.

\_\_\_\_\_  
COMMISSIONER OF OATHS

**FORM A2.3: CERTIFICATE OF SINGLE TENDER SUBMISSION**

**SOUTH AFRICAN NATIONAL ROADS AGENCY SOC LIMITED**

**CONTRACT SANRAL N.002-216-2022/1**

**FOR THE ROUTINE MAINTENANCE OF ELECTRICAL LIGHTING INFRASTRUCTURE ON  
NATIONAL ROUTE N2 SECTION 21X TO SECTION 26 – PACKAGE 1 (NON-TOLL)**



**Notes to tenderer:**

**This certificate serves as a declaration by the tenderer that a single tender was submitted.  
In the case of a Joint Venture (JV) or a Targeted Enterprise, a separate certificate is to be  
completed and submitted by each JV member or Targeted Enterprise.**

**DECLARATION**

I, the undersigned, ..... in submitting  
the accompanying tender on behalf of the tenderer do hereby make the following statements that I certify  
to be true and complete in every respect:

1. I have read and understand the notes to, and the contents of, this certificate.
2. I understand that the accompanying tender and any other tender shall be disqualified in the  
event that I, including a Joint Venture partner or a Targeted Enterprise, participate in more  
than 1 (one) tender.

**SIGNATURE:** .....

**DATE:** .....

**NAME:** .....

**POSITION:** .....

**FORM A2.3: CERTIFICATE OF  
SINGLE TENDER SUBMISSION**

RETURNABLE SCHEDULE A3.4 – REGISTRATION ON NATIONAL TREASURY CENTRAL SUPPLIER DATABASE

The tenderer shall provide a scanned copy in .pdf of the Active Supplier Listing on the National Treasury Central Supplier Database ([www.treasury.gov.za](http://www.treasury.gov.za)). In the case of a joint venture (JV), the tenderer shall provide scanned copies in .pdf of the Active Supplier Listing on the National Treasury Central Supplier Database for each member of the JV.

Name of Contractor: .....

Central Supplier Database Supplier Number: .....

Supplier Commodity: .....

Delivery Location: .....

**FORM C4: TENDERER'S  
KEY PERSONNEL  
EXPERIENCE**



Key person	Contracts 7EP or higher	
	Minimum technical qualification or registration	Minimum relevant experience (years) <sup>1</sup>
Person within Company	PrEng or PrTech with ECSA2 or PrCM with SACPCMP3	10
Contracts Manager	Registered Installation Electrician/ National Electrical Diploma	7
Contractor's Representative (Construction Manager - Site Agent)	National Electrical Diploma	7
	NQF6 In Electrical Engineering	7
Construction Health and Safety Officer (CHSO) within Company	CHSO with SACPCMP	As required by SACPCMP
Targeted Group Development Coordinator	NQF 5 in Electrical Engineering	10

## 4. PART C1: AGREEMENTS AND CONTRACT DATA

**SANRAL**



BUILDING SOUTH AFRICA  
THROUGH BETTER ROADS



## PART C1: AGREEMENTS & CONTRACT DATA

### C1.2.1 CONDITIONS OF CONTRACT

The Conditions of Contract for Construction (**1999 edition**) published by the Federation Internationale des Ingenieurs-Conseils (**FIDIC**), as amended, shall apply to this contract.

## PART C1: AGREEMENTS & CONTRACT DATA

### C1.1.1 FORM OF OFFER

- Ensure that **amount in words** corresponds with **amount in figures** on the Pricing Schedule
- Ensure that **Preference Claimed** is completed
- Ensure that Form of Offer is signed by **authorised person** and **two witnesses**.

## PART C1: AGREEMENTS & CONTRACT DATA

### C1.2.2 APPENDIX TO TENDER: CONTRACT DATA INFORMATION PROVIDED BY THE EMPLOYER

#### Notes to tenderer:

1. This form is the equivalent of the Appendix to Tender as defined in Sub-Clause 1.1.1.9 of the FIDIC Conditions of Contract.
2. Clause numbers (Cl. No.) refer to the FIDIC Conditions of Contract. The prefix A refers to an amendment to these conditions.

1.1.2.2            Employer's name and address:            means the **South African National Roads Agency SOC Limited** instituted in terms of the South African National Roads Agency Limited and National Roads Act (Act No. 7 of 1998) or a person delegated by the South African National Roads Agency SOC Limited to act on its behalf.

## PART C1: AGREEMENTS & CONTRACT DATA

### C1.2.2 APPENDIX TO TENDER: CONTRACT DATA INFORMATION PROVIDED BY THE EMPLOYER

Item  
2.1

After receiving the Letter of Acceptance, the Contractor shall be given right of access to all or part of the Site:

Data

**Shall be the Commencement Date.**

## PART C1: AGREEMENTS & CONTRACT DATA

### C1.2.2 APPENDIX TO TENDER: CONTRACT DATA INFORMATION PROVIDED BY THE EMPLOYER

<u>Item</u>	<u>CI No</u>	<u>Data</u>
4.2	Performance Security	<b>5% of Contract Value</b>
	Currency	ZAR (South African rand only)

## PART C1: AGREEMENTS & CONTRACT DATA

### C1.2.2 APPENDIX TO TENDER: CONTRACT DATA INFORMATION PROVIDED BY THE EMPLOYER

<u>Item</u>	<u>CI No</u>	<u>Data</u>
6.5	Normal working hours on the Site:	<b>Special non-working days are the designated public holidays (including all foreseeable statutory declared election days)</b>

## PART C1: AGREEMENTS & CONTRACT DATA

### C1.2.2 APPENDIX TO TENDER: CONTRACT DATA INFORMATION PROVIDED BY THE EMPLOYER

<u>Item</u>	<u>CI No</u>	<u>Data</u>
14.6	Minimum amount of Interim Payment Certificate:	<b>ZAR 100 000.00</b>

## PART C1: AGREEMENTS & CONTRACT DATA

### C1.2.2 APPENDIX TO TENDER: CONTRACT DATA INFORMATION PROVIDED BY THE EMPLOYER

<u>Item</u>	<u>CI No</u>	<u>Data</u>
Target Area(s)	D1002(a)	<b>For Targeted Labour: To be determined in conjunction with PLC and SANRAL</b>
Target Group	D1002(a)	Target Group for Targeted Labour: <b>a. black designated groups;</b> <b>b. black people;</b> <b>c. women;</b> <b>d. people with disabilities</b>



## PART C1: AGREEMENTS & CONTRACT DATA

### C1.2.2 APPENDIX TO TENDER: CONTRACT DATA INFORMATION PROVIDED BY THE EMPLOYER

#### Contract participation Goals (CPG)

<b>Tendering entity less than 51% black ownership</b>	<b>Min 40% of contract value to be sublet to Targeted Enterprises as per D1001</b>
<b>Tendering entity at least 51% black ownership</b>	Min 35% of contract value to be sublet to Targeted Enterprises as per D1001
<b>Tendering entity at least 51% black women-owned or black youth owned</b>	Min 30% of contract value to be sublet to Targeted Enterprises as per D1001

## 4. PART C2: PRICING DATA

**SANRAL**



BUILDING SOUTH AFRICA  
THROUGH BETTER ROADS

## PART C2: PRICING DATA

Pricing Schedule is supplied in **Excel format downloadable from SANRAL website**  
<https://www.nra.co.za/service-provider-zone/tenders/open-tenders/>

Some changes might be made to the Pricing Schedule following enquiries from Tenderers.

**A revised Pricing Schedule** will then be issued together with an Addendum.

**Please ensure that the revised Pricing Schedule is used in such a case!!!!!!!.**

## 5. PART C3: SCOPE OF WORK

**SANRAL**



BUILDING SOUTH AFRICA  
THROUGH BETTER ROADS

### **C3.4 OVERVIEW OF THE WORKS**

This section provides the description of the project and the general requirements for executing the work. The work required is the routine lighting installation maintenance of the national road.

The scope of the routine lighting installation maintenance contract is for the contractor to primarily have a management role, as it is a requirement of the contract for the Contractor to facilitate the contractor development of targeted enterprises as a contract participation goal by means of subcontracting some of the scheduled work to targeted enterprises as subcontractors. The Contractor is required to provide sustainable work opportunities and assistance in the form of financial support for the procurement of goods and services, to targeted enterprises. In addition, the Contractor is required to manage the skills development of targeted enterprises by providing training, coaching, guidance and mentoring.



## PART C3: SCOPE OF WORKS

Route / IC Information	Route	Section	From km	Section	To km	Total km
Kokstad Interchange	N2	21X	5.5	21X	7.2	1.7 km
Singisi truck stop	N2	21X	26.4	21X	30.2	3.8 km
Between Marburg and Murchison	N2	22	18.4	22	28.2	9.4 km
Umgeni Interchange	N2	25	20.4	25	21.9	1.9 km
KwaMashu Interchange	N2	25	28.4	25	28.8	0.57 km
KwaMashu Interchange to Umdloti Interchange	N2	25	28.4	26	12	12.2 km
Mount Edgecombe I/C	N2	26	2.5	26	4.5	2 km
Blackburn Pedestrian Bridge	N2	26	6.2	26	6.2	0.1 km
						31.67 km

The scope of works include the repairs and replacement of damaged and vandalised lighting at Interchanges and national roadways.

**This contract is for the following works:**

- Electrical infrastructure and lighting repairs
- Maintenance of electrical infrastructure and lighting for a period of sixty (60) months
- Unplanned repairs of lighting and infrastructure reticulation for the contract period
- The installation of a lighting management system if specified. (The LMS proposals will be evaluated for feasibility. SANRAL, at its discretion, will decide whether to proceed with this aspect of the works.)

**Repairs:** The repairs scope consists of the repairs and re-instatement of damaged and vandalised electrical infrastructure and lighting at existing lighting installations within SANRAL routes.

- a) The maintenance of the newly installed equipment and components will also form part of the scope (including 12 months guarantee period).

**Maintenance:** The maintenance scope consists of the monthly site inspections, quarterly and annual maintenance of the electrical infrastructure and lighting at existing lighting installations.

**Unplanned Repairs:** SANRAL, its representative or the contractor will report to the site agent any lighting or electrical infrastructure faults or breakdowns which may occur or identified during the routine inspections. A repair notice will be transmitted to the contractor in writing. The contractor shall respond to the complaint as necessary to restore the lighting or electrical infrastructure in accordance with the assigned priority level and the breakdown shall be repaired as necessary to restore the lighting or infrastructure to full operation in the minimum time. On completion of the complaint remedy, the contractor shall complete a Job Card and submit to the Engineer. Job Cards will be signed off and certified by the Engineers Site Agent.

The lighting shall be to SANRAL specifications and SANS / IEC 10098 - Part 1: The Lighting of Public Thoroughfares. Interchange lighting to be to SANS 10098 – Part 2 : The lighting of specific highways and intersections. Category lighting specifications for maximum traffic of as noted on Form A15.



## 6. PART C4: SITE INFORMATION

**SANRAL**



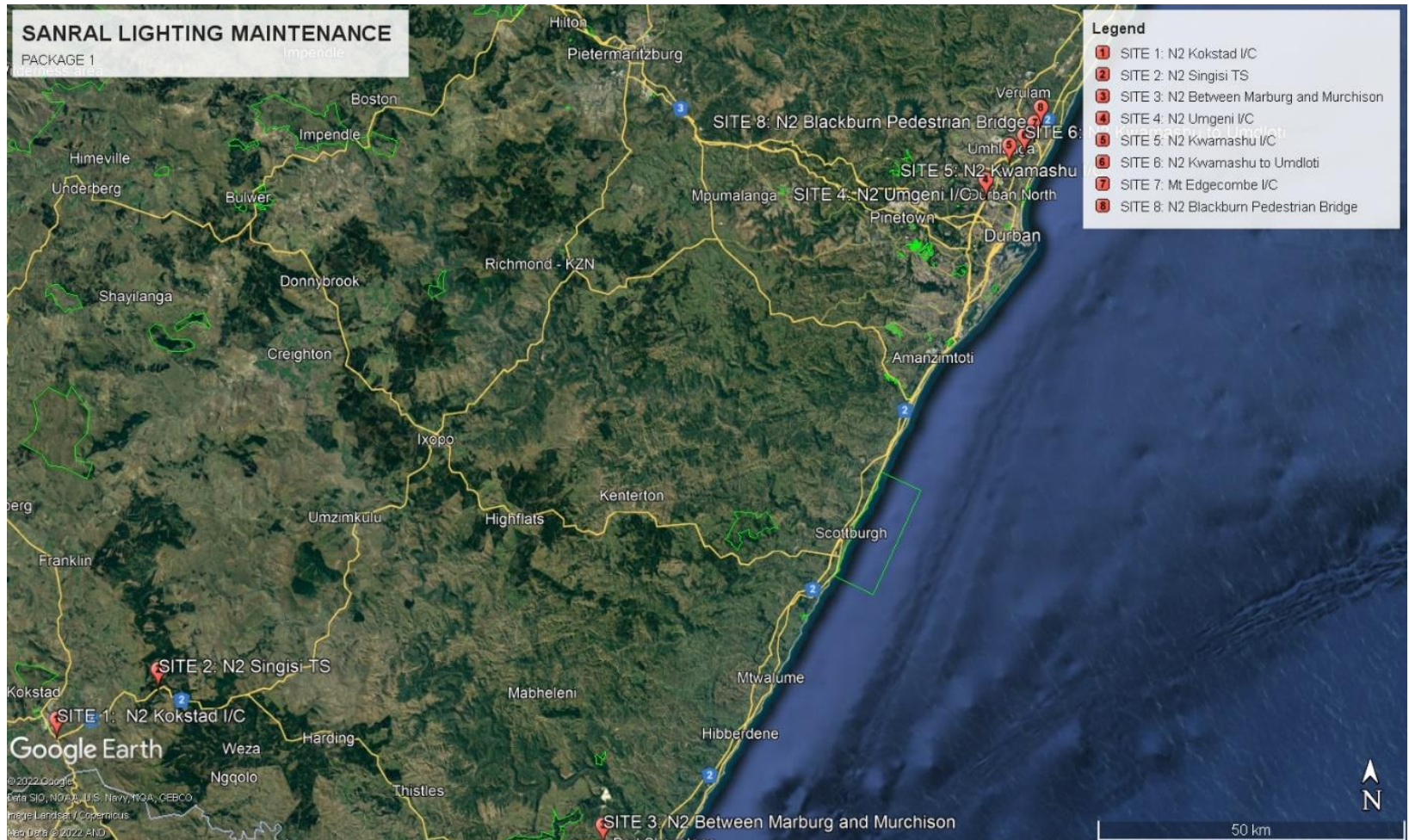
BUILDING SOUTH AFRICA  
THROUGH BETTER ROADS

## LOCALITY

## PART C4: SITE INFORMATION

Route / IC Information	Route	Section	From km	Section	To km	Total km
Kokstad Interchange	N2	21X	5.5	21X	7.2	1.7 km
Singisi truck stop	N2	21X	26.4	21X	30.2	3.8 km
Between Marburg and Murchison	N2	22	18.4	22	28.2	9.4 km
Umgeni Interchange	N2	25	20.4	25	21.9	1.9 km
KwaMashu Interchange	N2	25	28.4	25	28.8	0.57 km
KwaMashu Interchange to Umdloti Interchange	N2	25	28.4	26	12	12.2 km
Mount Edgecombe I/C	N2	26	2.5	26	4.5	2 km
Blackburn Pedestrian Bridge	N2	26	6.2	26	6.2	0.1 km
						31.67 km





## 8.PART D: STAKEHOLDER AND COMMUNITY LIASON

**SANRAL**



BUILDING SOUTH AFRICA  
THROUGH BETTER ROADS



## PART D: STAKEHOLDER AND COMMUNITY LIAISON, TARGETED LABOUR AND TARGETED ENTERPRISES UTILISATION AND DEVELOPMENT

- D1001** Employer's Fourteen Point Plan
- D1003** Target Group Participation
- D1004** Stakeholder and Community Liaison and Social Facilitation
- D1005** Mobilisation Period
- D1007** Tender Process for Targeted Enterprises
- D1008** General Responsibilities of the Contractor towards Targeted Enterprises
- D1009** Work suitable for Execution by Targeted Enterprises
- D1010** Training, Coaching, Guidance, Mentoring and Assistance
- D1012** Community Development

## 9. COMMON ERRORS

**SANRAL**



BUILDING SOUTH AFRICA  
THROUGH BETTER ROADS

## COMMON ERRORS

### **BIDDER TO AVOID THE FOLLOWING COMMON ERRORS:**

#### **1. Submitted Sworn Affidavits:**

- Without financial year indicated
- Different dates by deponent and commissioner
- SA based on irrelevant BBEE codes
- Unsigned SA affidavits by the commissioner of oath or deponent

#### **2. BBEE CERTIFICATES:**

- Submission of a certificate based on Old/repealed Codes
- Expired BBEE Certificate
- Certificate issued by an accountant or an Auditor
- Certificate issued by an Agency not accredited by SANAS
- Status level contradicts with revenue bracket

## COMMON ERRORS

### **BIDDER TO AVOID THE FOLLOWING COMMON ERRORS (continued):**

#### **3. Joint Venture submissions:**

- Individual certificates instead of a JV B-BBEE Certificate
- JV B-BBEE Certificate submitted but the individual certificates are based on irrelevant codes
- Correct JV certificate but one of the partners is a Generic and the other an EME/QSE
- Project specific certificate not dated by the Commissioner
- 

#### **4. Local Content Form A3.5 - Declaration Certificate for Local Content:**

- Minimum Local Content is less than prescribed
- Tenderers do not mark whether the goods or services will be imported content.
- Tenderers indicate that the portion of goods or services will have an imported content and DO NOT attach or indicate the relevant Rate of Exchange (RoE)
- The tenderer completes the form with some fields (Imported content%) marked “n/a” and signed by witnesses.
- The tenderer partially completes the declaration and signed by witnesses (or only one witness).
- The tenderer does not complete the form.
- The tenderer does not include the form in the tender submission.



# 10. CLOSING/END

**SANRAL**



BUILDING SOUTH AFRICA  
THROUGH BETTER ROADS

## QUERIES

- All queries to be addressed to **SANRAL Procurement Manager- N.002-216-2022/1**
- email: [ProcurementER2@sanral.co.za](mailto:ProcurementER2@sanral.co.za)
  - Phone: (033) 392 8100
  - Form A1.1 to be submitted by **MONDAY, 23 JANUARY 2023**

## TENDER SUBMISSION

- TENDER CLOSING ON **TUESDAY, 14 FEBRUARY 2023**

### **Volume 3 ELECTRONIC SUBMISSION**

The following information has to be submitted electronically on flash drive and printed and bound hard copy:

The 1st file in pdf format which contains:

- Scanned copy of Form of Offer (pdf)
- Scanned copies of all returnable schedules and attachments (pdf)
- Scanned copy of Pricing Schedule (pdf)

The 2nd file in Excel format which contains:

- Completed pricing schedule

# THANK YOU

SANRAL web address: [www.nra.co.za](http://www.nra.co.za)

SANRAL Fraud Hotline: 0800 204 558

**SANRAL**



BUILDING SOUTH AFRICA  
THROUGH BETTER ROADS