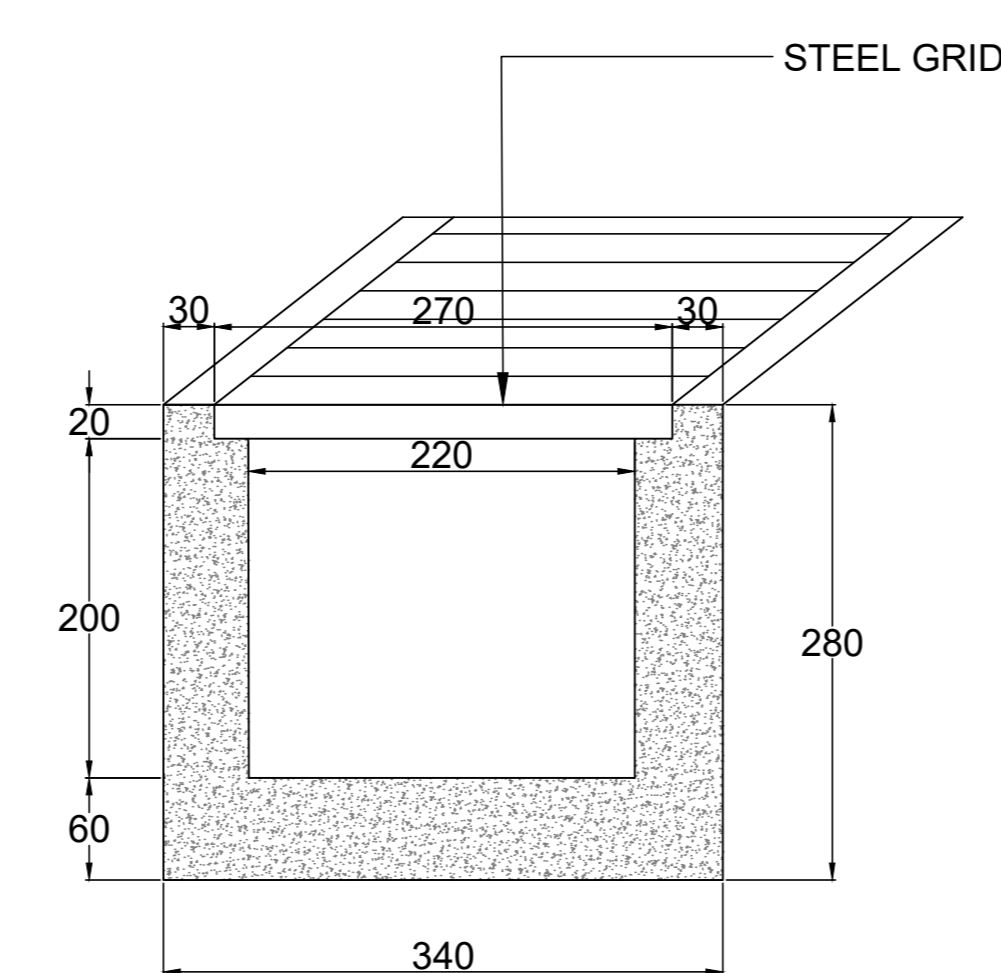


TYPICAL PARKING CROSS SECTION A-A
SCALE 1:50



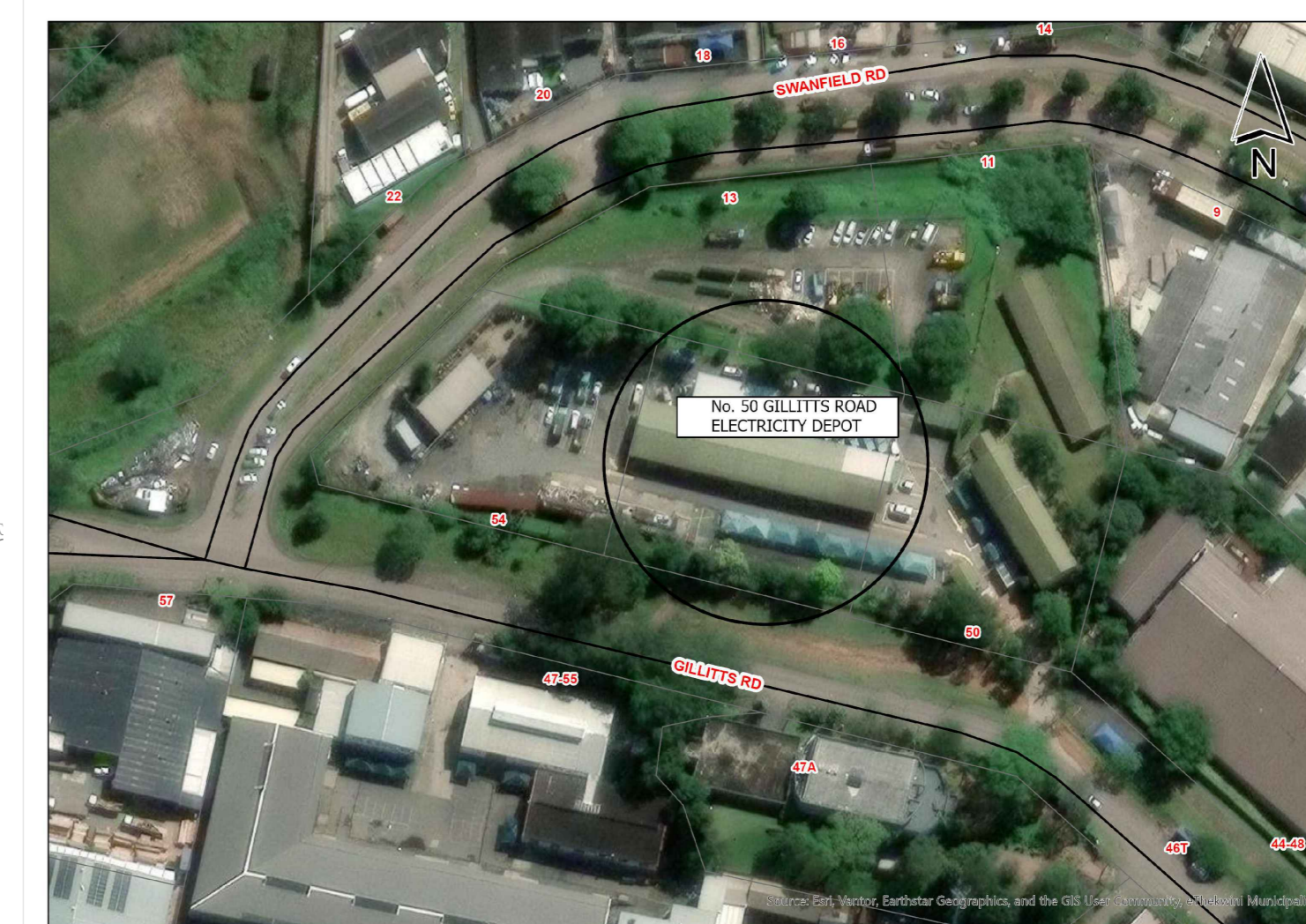
SWC8 PRECAST GRID & OPEN CHANNEL
NTS

SETTING OUT CONTROL (SYSTEM : WGS 31)

Name	Y	X	Z	Description
Constants	0.000	0.000	0.000	
WP1	15 290.474	+3 299 381.476	369.636	NAIL IN TAR
WP2	15 361.003	+3 299 361.973	369.995	NAIL IN TAR
WP3	15 269.768	+3 299 417.047	372.066	NAIL IN TAR

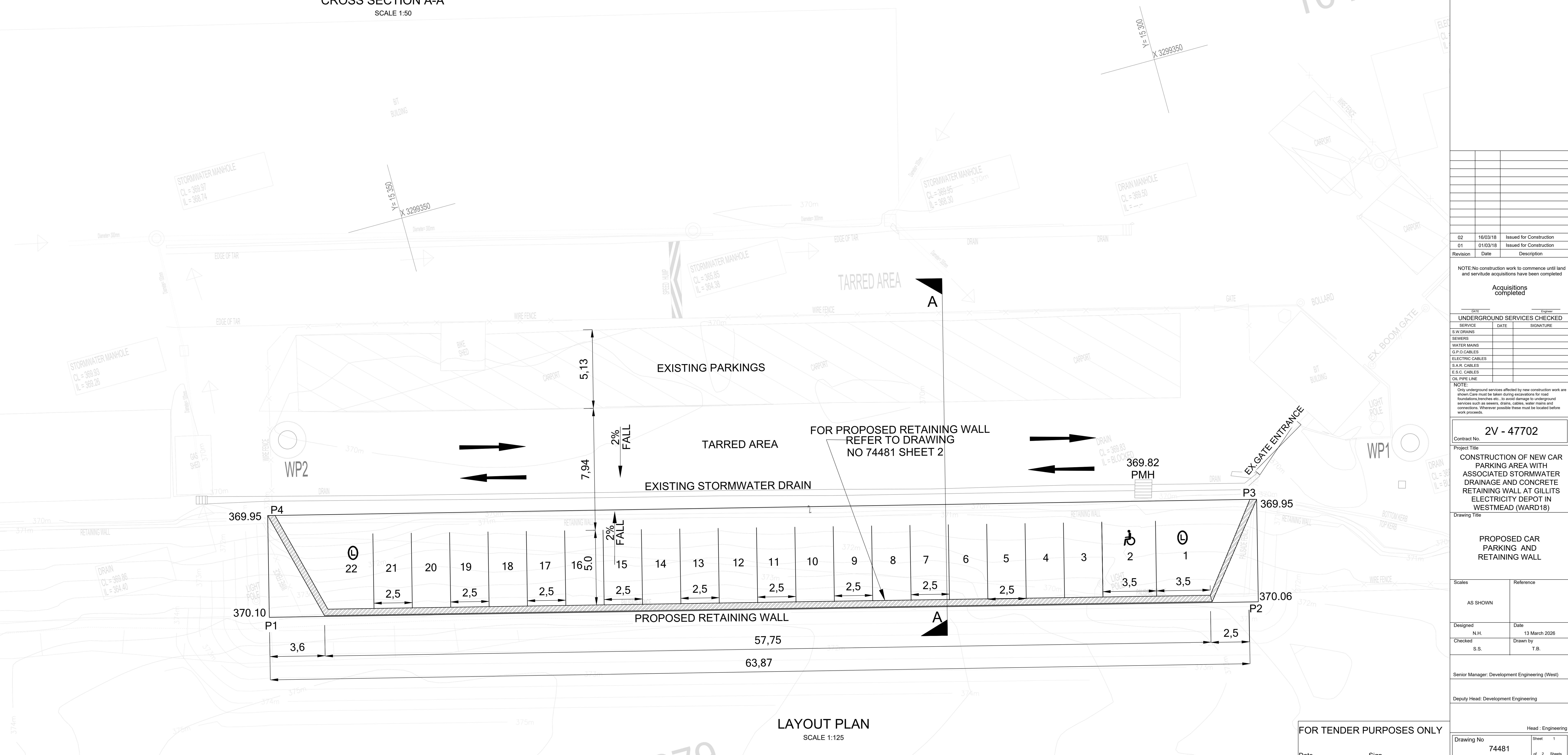
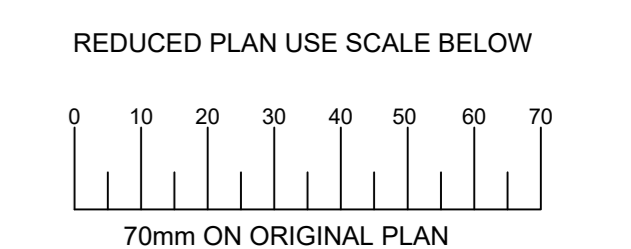
PARKINGS CO-ORDINATES

DESCRIPTION	Y- COORDINATE	X- COORDINATE	CHAINAGE	SLOPE%	SLOPE CHAIN
P1	15365.114	3299372.374	370.100	-3.492	
P2	15303.229	3299388.217	370.064	-2.030	-0.056
P3	15301.508	3299382.261	369.940	-0.372	-2.000
PMH	15308.241	3299382.261	369.820	-0.332	-1.727
P4	15363.393	3299366.417	369.950	0.013	0.228



ENGINEERING UNIT
DEVELOPMENT ENGINEERING

PLAN DESCRIPTION	DWG. NO.	SHEET NO.
CONTINUED FROM		
CONTINUED ON		
CROSS SECTIONS		
TYPICAL CROSS SECTION		
SURVEY LAYOUT		



LAYOUT PLAN
SCALE 1:125

FOR TENDER PURPOSES ONLY
Date Sign.

Revision	Date	Description
02	16/03/18	Issued for Construction
01	01/03/18	Issued for Construction

NOTE: No construction work to commence until land and servitude acquisitions have been completed

Acquisitions completed

UNDERGROUND SERVICES CHECKED

SERVICE	DATE	SIGNATURE
S.W. DRAINS		
SEWERS		
WATER MAINS		
G.P. CABLES		
ELECTRIC CABLES		
S.A.R. CABLES		
E.S.C. CABLES		
OIL PIPE LINE		

NOTE: Only underground services affected by new construction work are shown. Care must be taken during excavations for road foundations, trenches, etc., to avoid damage to underground services such as sewers, drains, cables, water mains and connections. Wherever possible these must be located before work proceeds.

2V - 47702
Contract No.
Project Title
CONSTRUCTION OF NEW CAR PARKING AREA WITH ASSOCIATED STORMWATER DRAINAGE AND CONCRETE RETAINING WALL AT GILLITS ELECTRICITY DEPOT IN WESTMEAD (WARD 18)

PROPOSED CAR PARKING AND RETAINING WALL

Scales	Reference
AS SHOWN	

Designed	Date
N.H.	13 March 2026

Checked	Drawn by
S.S.	T.B.

Senior Manager: Development Engineering (West)
Deputy Head: Development Engineering

Head : Engineering
Drawing No 74481
Sheet 1 of 2 Sheets