

<b>To</b>	SCM
<b>From</b>	PRASA CRES-SGR: PMU
<b>Date</b>	SEPT 2022
<b>Subject</b>	REQUEST FOR REMODEL, REFURBISH AND RECONFIGURATION OF EXISTING SHIPPING CONTAINERS INTO STATION FACILITIES – LERALLA STATION

## **PROJECT BRIEF**

The scope of works included herein is to obtain a service provider for the Alternative Building Technology, (ABT) for Leralla Station Facilities. The Shipping Containers are a preferred ABT as an interim measure for Metrorail staff to perform customer services supporting the travelling commuters such as ticket sales, and other important functions.

## **DESCRIPTION OF WORK**

The self-contained units are currently existing and are owned by PRASA. They are sized as follows 2.5 in width, and standard lengths varying from 3 to 12m. All of these come standard with a minimum 12 months warranty. Manufacturing process of the containers need to comply with ISO 9001:2015 and OSHAS 18001:2007, with a minimum rated lifespan of 20 years. The used containers are to be in a good working condition.

The appointed suppliers will design, prepare and customize each container by fitting all the contents as per PRASA requirement listed in the scope of work, deliver them to Leralla Station. This is to enable the station to operate and resume services.

## **ADDITIONAL SERVICES and REQUIREMENTS**

The service provider will be required to undertake the following responsibilities:

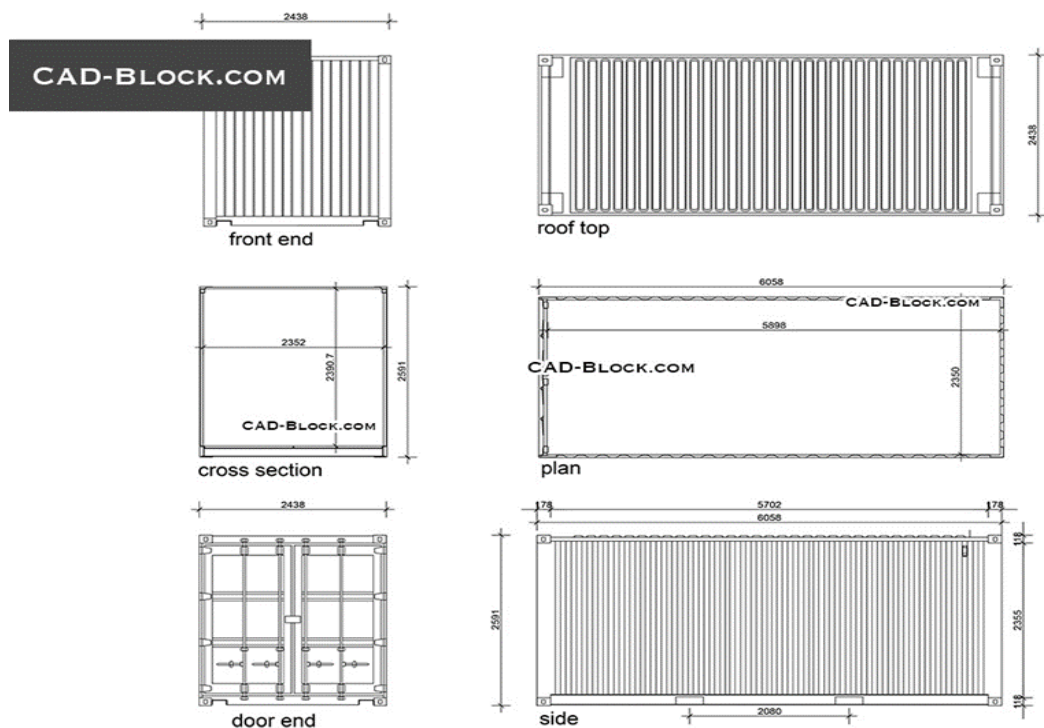
- Prepare shop drawings of the containers to PRASA specifications and get approval for reconfiguration from PRASA.
- The service provider will be required to collect the containers from various locations in Gauteng and reconfigure at their own location/facility/depot.
- Will be required to prepare the site where the containers will be received prior to installation.

## SCOPE OF WORKS

The scope of work covers the supply, delivery and installation of self-contained, tailor-made, fully kitted containers to be delivered to Leralla Station. The containers will address the following needs in line with the Bills of Quantities Provided:

- Ticket Sales/ admin office
- Ablutions for staff

*Fit out ship containers to the following requirements:*



**Figure 5.1.1 above**

*In line with the above designs, the below are the direct fixtures and characteristics of the containers;*

### **Container Reconfigurations and Repurposing**

#### **Double Storey Unit – 12-meter unit; Ticket office, 3 windows**

The unit is to be installed where the present Leralla container ticket office sits, however owing to the vandalism of the old container, a new ABT container is proposed. 2 containers will be used, On the ground floor a 12m x 2.4 m container will be designed for the ticket office and on the first floor a 6m x 2.4m container will be used for the supervisor/ station managers office and a meeting room. The current external brick wall will be increased from 2.2m to a height of 3m and will serve as a barrier and security precaution between the platform and the ticket office as well as being part of the proposed ABT. Externally an Anti-climb fence and gate will be installed as a security measure.

- Installing of bullet resistant glass
- Installing of Anti Bandit (bullet resistant doors)
- Installation of counters
- Installation of steel lined walling for treasury
- Installing of insulation wall and ceiling
- Installing of vinyl flooring
- Installation of Air Conditioning
- Installation of roller shutter for windows and doors – electronic
- Installation of electrical work – 220V wiring in conduits, DB and main connection
- DB Board with earth leakages & circuit breakers
- Fluorescent lights, Bowl light - JD 90, Single plug points, Double plug points, Light switches and External lights – Bulkhead
- Branding and signage (Based on PRASA's Blueprint Document)
- Directional and Statutory signage
- Providing Fire Extinguishers
- Drop in Safe
- Sink and built-in taps and cupboards
- Supply and Installation of 'hydroboil'
- Boardroom
- Supervisors Office
- Unisex Staff Ablutions
- Provide 3 cash drawers and money counting machines



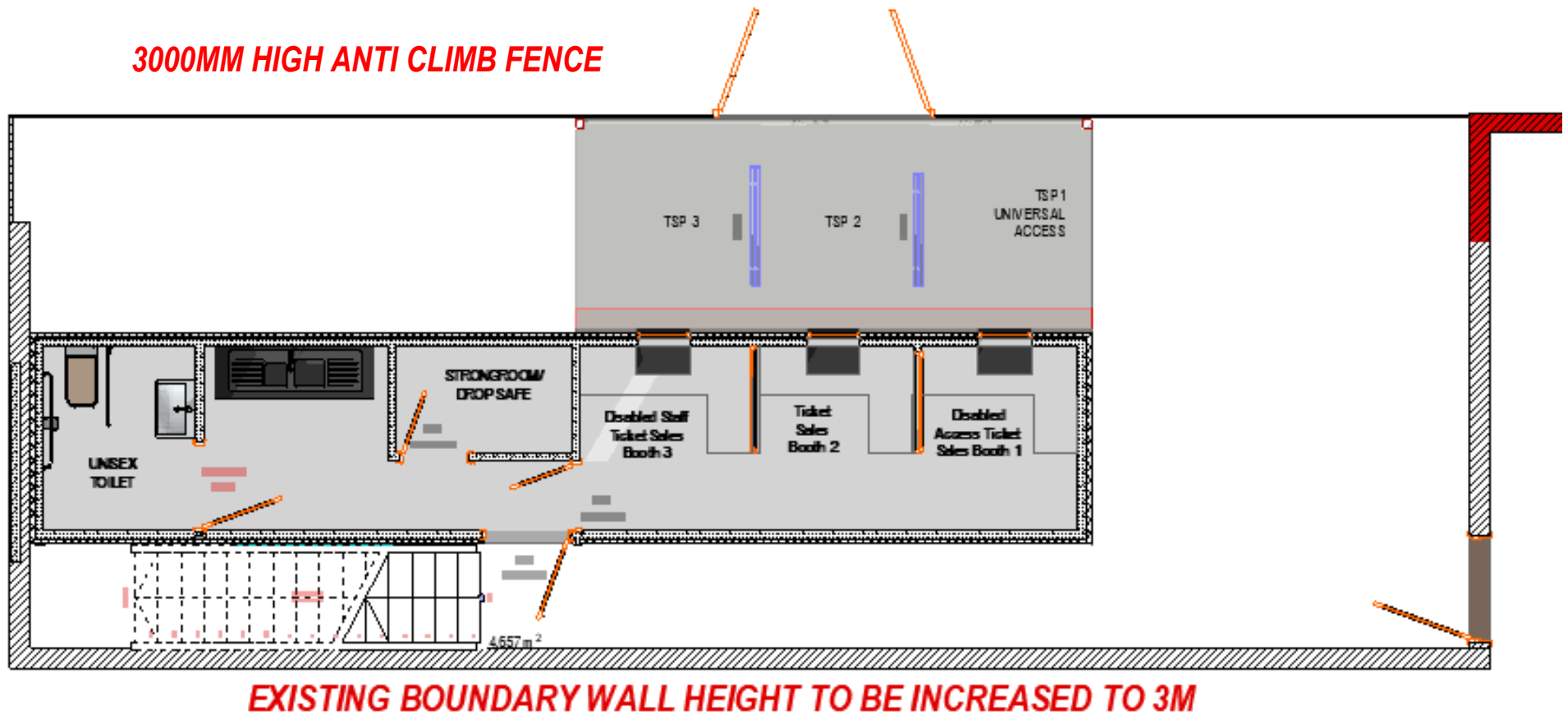


Figure 1: ABT GROUND FLOORPLAN

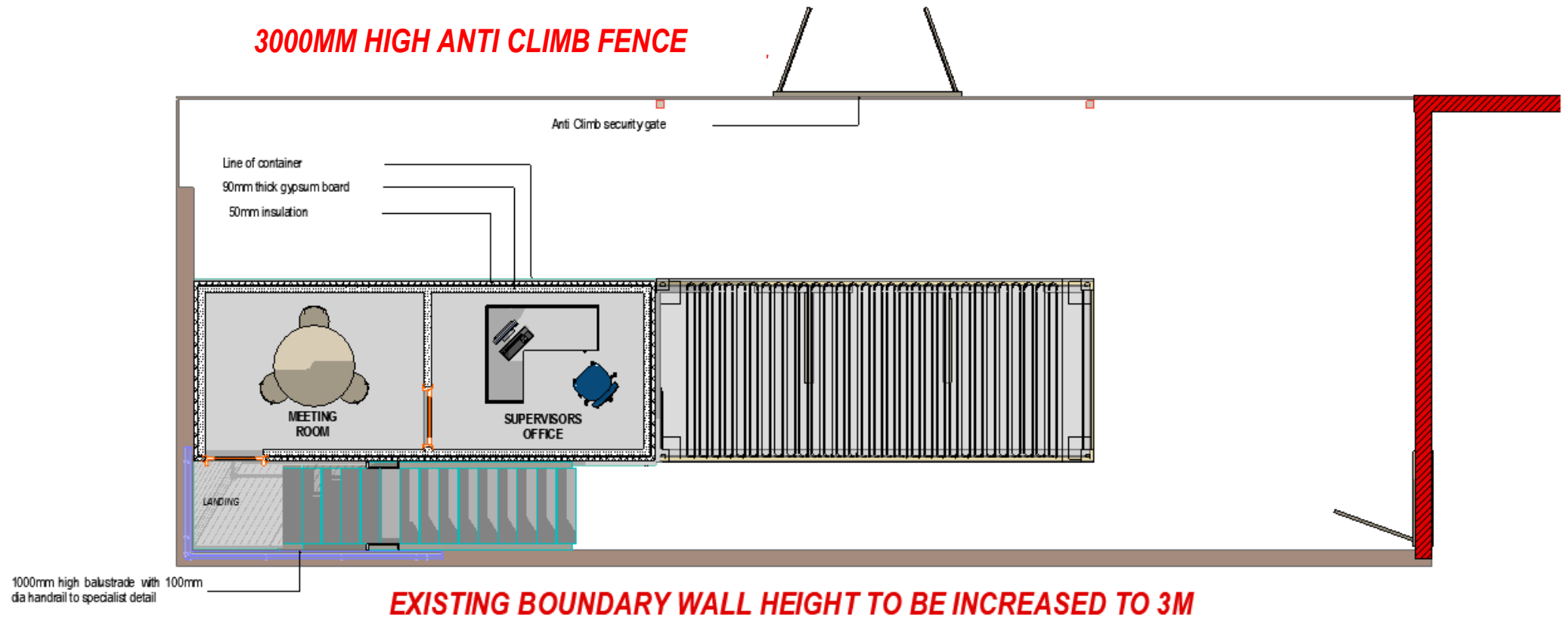


Figure 2: ABT FIRST FLOORPLAN



ITEM	Detailed specification
A1. 1. BULLET PROOF WINDOWS	Level G3 bullet resistant glazed & natural anodized aluminum transaction window with 30mm deep stainless steel dish tray and speech transfer posts (interior applications only), overall size to details, glazed in 38mm thick clear glass with 32mm post formed granite counter top
A1. 2. EXTERNAL ANTI BANDIT DOORS	Level G3 bullet resistant Anti-bandit door, complete with 100 x 50 x 3mm gauge mild steel rectangular frame and 25 x 25 x 3mm MS angle rebates, overall size 930 x 2100mm high in powder coating and or galvanized cladding with peep hole, supplied with a 6 pin tumbler key system, mortice dead lock with an additional heavy duty magnetic lock and striker including key switch and surface mounted casing, 6 Amp power supply, push buttons and interlock system, heavy duty aluminum continuous hinge, aluminum slam bar with heavy duty door closer and D-style pull handles. Door to comply to SABS 1658- 1996
INTERNAL ANTI BANDIT DOORS	G2 bullet resistant Anti-bandit door, complete with 100 x 50 x 3mm gauge mild steel rectangular frame and 25 x 25 x 3mm MS angle rebates, overall size 930 x 2100mm high in paint finish with 250 X 500mm high BRG viewing panel glazed in 38mm thick bullet resistant glass with one-way vision film, supplied with a 6 pin tumbler key system, mortice dead lock with an additional heavy duty magnetic lock and striker including key switch and surface mounted casing, 6 Amp power supply, push buttons and interlock system, heavy duty aluminum continuous hinge, aluminum slam bar with heavy duty door closer and D-style pull handles. Door to comply to SABS 1658-1996
A1. 3. COUNTER TOPS	Provide 5 [1900mm x 600mm wide granite top, 860mm high] with complete clearance below.
WORKTOPS	<p>30mm thick granite with all exposed edges large bevel edged, fixed to supports (elsewhere specified) using dabs of 100% black silicone adhesive along all supports with all joints filled with matching polyester resin glue. Granite surface to be sealed using an approved stone sealer, all in accordance with the manufacturer's recommendation</p> <p>32mm thick Formica Lifeseal Worktop Walnut Loglare with Squareline profile on 1 long edge, consisting of a Formica High Pressure Laminate bonded to a moisture resistant Particleboard substrate with laminated on one side backer, manufactured in accordance with SANS ISO 4586:1995 constructed in accordance with the drawings.</p>



ITEM	Detailed specification
A1. 4. STRONGROOM/ DROP SAFE	<p>Redesign internal space to cater for a 2m x 2m strong room.</p> <p>Strong room to have concrete slab over</p> <p>Strong Room to receive class 2 Security door.</p> <p>Cash drop-safe to cater for 3 safes standard size</p>
A1. 5. CEILING	<p>Lay-In system comprising 600 x 600 x 0,6mm thick aluminum acoustic tiles finish color RAL 9010 with 8mm reveals and 1,5mm diameter perforations including sound absorbing non-woven tissue backing, laid on T15 suspension system including main tees at 1200mm centers, cross tees, etc. all suspended with galvanized hangers at not exceeding 1200mm centers. Ceiling perimeter finished with W-profile. The whole to be designed and installed by approved specialist, all in accordance with the manufacturer's recommendations.</p>
A1. 6. FLOORING	<p>500 x 500mm Loose lay carpet tiles with Tessellated Installation</p>
A1. 7. ACCESSORIES	<p>Provide 3x cash drawers and 1 No. money counting machines</p>
A1. 8. ELECTRICAL INCLUDING LUMINARIES	<p>Luminaries and installation to comply with SANS 1464 Parts 1 to 22 and IEC 598-1 and IEC 60598 as applicable. The contractor shall, in the case of board and acoustic tile ceilings ensure that the luminaries are symmetrically positioned with regard to the ceiling pattern. The layout of the luminaries as indicated on the drawings shall be adhered to as far as possible. The exact positions must be confirmed on site with the Employer.</p> <p>Fluorescent luminaries to be mounted on concrete ceilings shall be screwed to the outlet boxes and additionally supported by means of 50mm x 6mm expansion bolts. The bolts are to be <math>\frac{3}{4}</math> of the length of luminaries apart.</p> <p>Where a number of luminaries are installed end to end, outlet points must be provided after every second luminaire unless otherwise indicated on the drawing. The luminaries are to be joined together by means of 20mm conduit nipples, lock nuts and male brass bushes, and the wiring led through the channels of the luminaries. The Contractor shall ensure that all such rows are correctly lined up and that the rows are parallel</p>

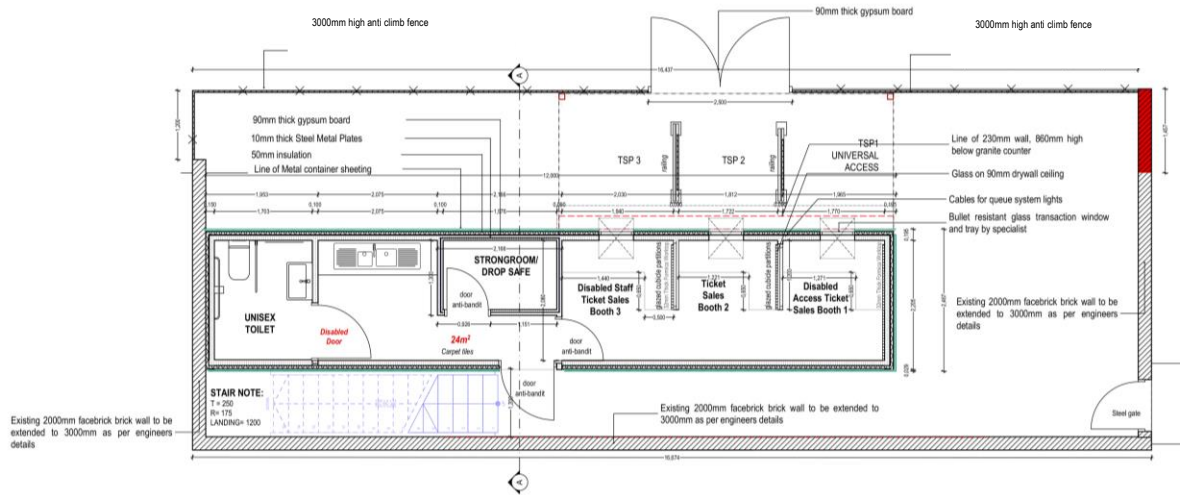
ITEM	Detailed specification
	with the relevant building line. The luminaries are to be jointed together by means of 20mm or 25mm conduit nipples, lock nuts and male brass bushes, and the wiring led through the channels of the luminaries. The Contractor shall ensure that all such rows are correctly lined up and that the rows are parallel with the relevant building line. Incandescent luminaries are to be screwed directly to outlet boxes in concrete slabs and in board ceilings. In board ceilings the conduit box and the conduit shall be secured to the timberwork of the ceiling in such a manner that it shall support any incandescent luminaire, which is designed to be fixed to a normal conduit box. Fluorescent luminaries shall be secured to board ceilings by means of the conduit box and 6mm bolts passing through the boards and brandering.
A1. 9. CERTIFICATION	All alterations and structural elements of the container shall be certified by a registered competent Engineer. A certificate of Compliance (COC) shall be issued for all electrical installations and lightning protection.
A1. 10.ELECTRICAL DISTRIBUTION BOARD (DB) (SURFACE MOUNTING DISTRIBUTION BOARDS)	Single Phase boards shall be generally constructed as three phase boards except they shall have a single panel. Single phase boards shall be mounted with the bottom of the architrave 1,5m above finished floor level unless specifically directed otherwise.  These shall be generally manufactured in accordance with SANS 1765, with two panels as for flush boards.
A1. 11.POSITIONS OF SWITCHES AND SOCKET OUTLETS	Except where otherwise specified, lighting switches Installed at 1,4m and socket outlets are to be installed 300mm and 1,4m at the kitchen above finished floor level. All mounting heights specified are to be measured from finished floor level to the bottom of the outlet box. Where the lower portion of the wall consists of face brickwork and the upper portion of plastered finish, switches and socket outlets are to be mounted in the plastered surface, provided that the lower edge of the plasterwork does not exceed a height of 1,5m above finished floor level in which case the switches or socket outlets are to be installed in the face brick dado.
A1. 12.INSTALLATION OF CONDUIT	Except where cables are specified for certain circuits, the installation(s) shall be tubed throughout in steel conduit. Split conduit is not permitted. All conduits shall, wherever possible, or unless otherwise specified or agreed, be concealed in the structural work.

ITEM	Detailed specification
	<p>Except where agreed or otherwise specified or indicated on the drawings, all conduit to points shall run via the ceiling and floor slabs or roof space. In damp situations and where exposed to the weather, the conduits shall be so installed as to avoid, as far as possible, the condensation of moisture within them. All running joints are to be painted with an approved metal primer.</p> <p>Mechanical and Electrical continuity must be maintained throughout the installation. Each length of conduit and every conduit fitting must be inspected for defects and all sharp edges or burrs must be removed before it is installed. All joints are to be tightly fitted together. Running joints with long threads, where used, are to be fitted with a lock nut and the running thread shall not be longer in length than a coupling and lock unit.</p>
A1. 13. MECHANICAL – HIGHWALL SPLIT AIR CONDITIONING UNITS	<p>1no. x 2.5kW Cooling Capacity and 2.8kW Heating Capacity Highwall inverter type split unit, unit shall come complete with Wallmounted control (Wired Type).</p> <p>1No. x 3.5kW Cooling Capacity and 4kW Heating Capacity Highwall inverter type split unit, unit shall come complete with Wallmounted control (Wired Type).</p>
A1. 14. MECHANICAL – FIRE PROTECTION EQUIPMENT	<p>1no. x 4.5kg of Dry Chemical Powder (DCP) fire extinguishers c/w red fire extinguisher cabinet cover.</p> <p>1 No. x 5.0kg of Carbon Dioxide (CO2) fire extinguishers complete with mounting wooden plate</p>

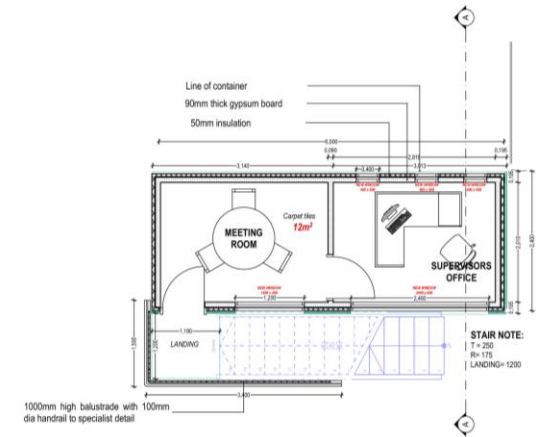


**prasa cres**

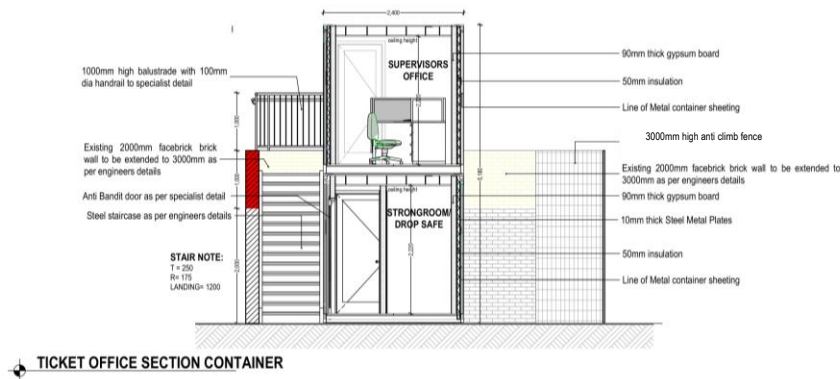
CORPORATE REAL ESTATE SOLUTIONS



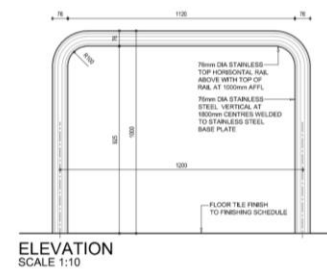
TICKET OFFICE GROUND FLOOR PLAN CONTAINER



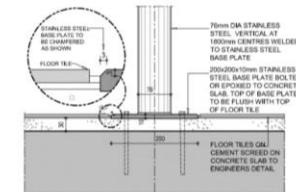
TICKET OFFICE FIRST FLOOR PLAN CONTAINER



TICKET OFFICE SECTION CONTAINER



HANDRAIL DETAIL ELEVATION



DETAIL SECTION BASE PLATE FIXING SCALE 1:5

HANDRAIL DETAIL