

FIELD

CIRCUIT No.

PHASE

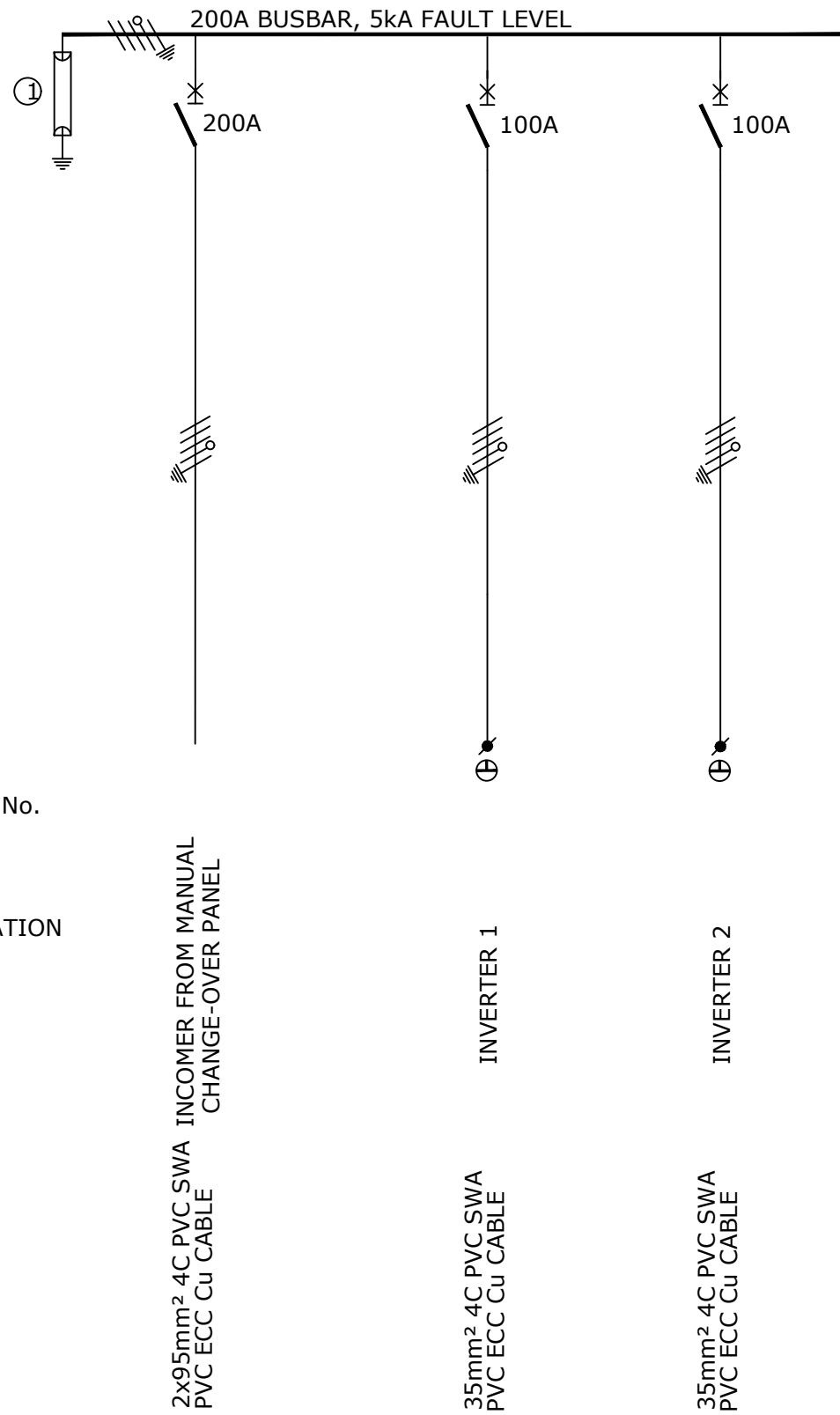
DESIGNATION

WIRING

CABLE NO.

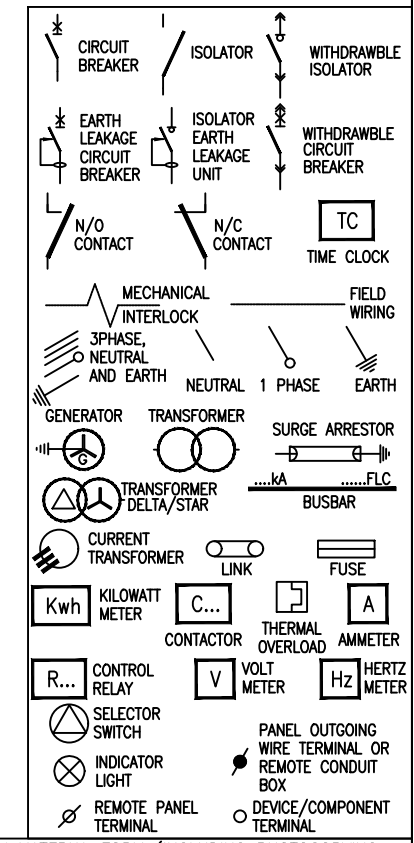
LOAD (AMPS)

No. OF POINTS



① CLASS 1 SURGE ARRESTOR

- ### NOTES
- 1) DROPPERS/TAILS TO BE RATED FOR FULL P_L LET THROUGH.
 - 2) HARNESSSED WIRING TO BE DERATED.
 - 3) TUFFNOL BRACES ARE NOT TO BE USED ABOVE 10kA.
 - 4) COPPER BUSBARS TO BE CONTINUOUS RATED.
 - 5) SUFFICIENT SPACE REQUIRED FOR SAFE ACCESS FOR REWIRING.
 - 6) EARTH AND NEUTRAL BARS TO BE EASILY ACCESIBLE.
 - 7) ALL CIRCUIT BREAKERS TO BE FITTED WITH TERMINAL SHIELD ON LIVE AND LOAD SIDES.
 - 8) ENCLOSURE TO BE IP54.
 - 9) PHASING RWB, TOP TO BOTTOM, LEFT TO RIGHT, BACK TO FRONT.
 - 10) INTERNAL TEMP TO BE LIMITED TO 5° ABOVE AMBIANT, MAX 40°C.
 - 11) ALL CIRCUITS TO BE LABELED.
 - 12) 25% SPARE SPACE. SPARE SPACES ARE TO BE FITTED WITH COPPER BUSBAR TAILS CONNECTED TO DROPPER BUSBARS TO ALLOW INSTALLATION OF CIRCUIT BREAKERS WITH A MINIMAL SHUTDOWN PERIOD.
 - 13) DB TO BE FITTED WITH A4 LEGEND CARD HOLDER WITH STANDARD IBUYA A4 LEGEND CARD.
 - 14) EACH CIRCUIT TO BE LABELED WITH DETAILED DESCRIPTION OF CONNECTED DEVICE.
 - 15) EXTERNAL EARTH STUD MOUNTED ADJACENT CABLE ENTRY.
- | | |
|----------------------|------------------|
| INCOMING CABLE | -BOTTOM |
| OUTGOING CIRCUITS | -TOP/BOTTOM |
| COLOUR | -ORANGE |
| | -RED (ESSENTIAL |
| | -SURFACE |
| MOUNTING | -FRONT |
| ACCESS | -SCHNEIDER |
| PROTECTIVE DEVICES | -MASTERPACT NW |
| ACB's (1250A-4000A) | -COMPACT NS |
| MCCB'S(800A - 1000A) | -EASYPACT CSV |
| MCCB'S(600A-630A) | -MULTI 9, TYPE 2 |
| MCB's | -AC3 HEAVY DUTY |
| CONTACTORS | |



Approved in Principle
Justin McKelvie-King
Pr Eng : 20120548

NOT WITHSTANDING ANYTHING TO THE CONTRARY, ALL RIGHTS RESERVED. NO PART OF THIS DRAWING MAY BE REPRODUCED IN ANY MATERIAL FORM (INCLUDING PHOTOCOPYING OR STORING IN ANY MEDIUM OR BY ELECTRONIC MEANS WHETHER OR NOT TRANSIENTLY OR INCIDENTLY TO SOME OTHER USE OF THIS DRAWING) AND ALSO, THIS DRAWING MAY NOT BE USED FOR ANY PURPOSE OR REASON OTHER THAN FOR WHICH IT WAS ORIGINALLY ISSUED, WITHOUT THE WRITTEN PERMISSION OF IBUYA CONSULTING ENGINEERS.

				ENGINEER	DRAWN	DATE:	SCALE:	CHKD.
				MK	CW		n.t.s	MK
				PROJECT No.	DRAWING No.	SHEET:		REV.
				32307	413			0
REV	DESCRIPTION	BY	DATE	CHKD.	File Name : 32307_412	Lyr:		

TITLE
Makhaza Police Station Electrical Installation
DRAWING TITLE:
Inverter Output System Single Line Diagram

