

April 2024

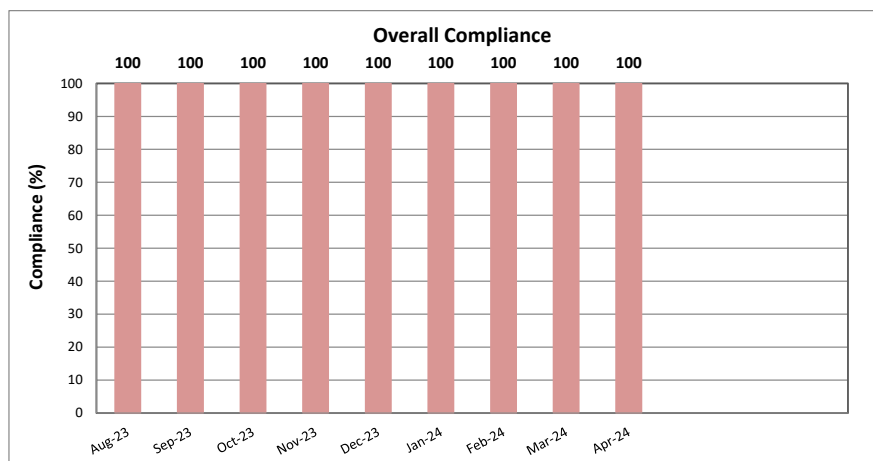
East London Cambridge Effluent Plant

Uitenhage

Site Information

Date of Sampling	03/04/2024
Sampling Point Identification	-32.967250 27.899750
Depot	East London Cambridge Effluent Plant
Region	Uitenhage
Treatment Technology	Not available/Unknown
Design Information	Not available/Unknown
Design/Current Capacity	Not available/Unknown
Flow Meter	None
Responsible Authority	Buffalo City Metropolitan Municipality
Discharge Point	Municipal sewer

Compliance History



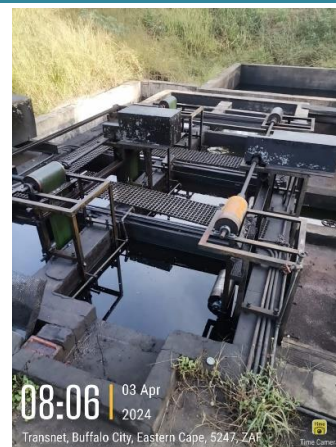
Findings

Site Visit Photo

Overall Compliance	100%		
Non-compliant Parameters			
Plant Operational	Yes	No	n/a
Maintenance	Yes	No	n/a
Site Neatness	Yes	No	Spillage
Access	Easy	Difficult	Risk

Recommendation(s)

Vegetation around the plant and belts not working.



Parameter	Temperature		pH Value		EC		COD		TSS		Chloride		Sulphate		Soap,Oil&Grease		Phosphate		Ammonia	
Month	44°C		6.0 - 12.0		400 mS/m		mg/l		1500 mg/l		750 mg/l		500 mg/l		400 mg/l		25 mg/l		mg/l	
August 2023	20.5	C	7.4	C	83	C	1386		69	C	59	C	57	C	0	C	1	C	0	
September 2023	19.7	C	6.8	C	85	C	352		88	C	73	C	31	C	0	C	2	C	0	
October 2023	22.2	C	7.2	C	74	C	214		64	C	69	C	29	C	74	C	2	C	0	
November 2023	22.7	C	7.5	C	50	C	36		17	C	43	C	32	C	0	C	0	C	0	
December 2023	24.8	C	7.1	C	93	C	622		37	C	111	C	37	C	0	C	0	C	0	
January 2024	27.1	C	6.7	C	31	C	20		10	C	18	C	12	C	0	C	0	C	0	
February 2024	27.1	C	7.3	C	48	C	143		28	C	64	C	31	C	12	C	1	C	0	
March 2024	27.8	C	6.8	C	28	C	68		48	C	42	C	22	C	2	C	1	C	0	
April 2024	19.9	C	7.3	C	37	C	121		12	C	46	C	33	C	4	C	1	C	0	
Parameter	Arsenic		Boron		Cadmium		Chromium		Cobalt		Copper		Iron		Lead		Manganese		Mercury	
Month	5 mg/l		5 mg/l		5 mg/l		20 mg/l		mg/l		20 mg/l		20 mg/l		5 mg/l		mg/l		1 mg/l	
August 2023	0.0	C	1.2	C	0.0	C	0.0	C	0.0		0.0	C	0.9	C	0.0	C	0.3		0.0	C
September 2023	0.0	C	1.1	C	0.0	C	0.0	C	0.0		0.1	C	1.5	C	0.0	C	0.2		0.0	C
October 2023	0.0	C	0.4	C	0.0	C	0.0	C	0.0		0.0	C	0.8	C	0.0	C	0.2		0.0	C
November 2023	0.0	C	0.2	C	0.0	C	0.0	C	0.0		0.0	C	0.2	C	0.0	C	0.1		0.0	C
December 2023	0.0	C	0.3	C	0.0	C	0.0	C	0.0		0.0	C	1.5	C	0.0	C	0.3		0.0	C
January 2024	0.0	C	0.1	C	0.0	C	0.0	C	0.0		0.0	C	0.1	C	0.0	C	0.0		0.0	C
February 2024	0.0	C	0.4	C	0.0	C	0.0	C	0.0		0.0	C	1.5	C	0.0	C	0.3		0.0	C
March 2024	0.0	C	0.0	C	0.0	C	0.0	C	0.0		0.0	C	1.1	C	0.0	C	0.0		0.0	C
April 2024	0.0	C	0.3	C	0.0	C	0.0	C	0.0		0.0	C	0.9	C	0.0	C	0.2		0.0	C

C = Compliant

N = Non-compliant

NS = No Sample Received

NA = Unable to Analyse

Parameter	Molybdenum		Nickel		Selenium		Silver		Sodium		Titanium		Zinc	
Month	5 mg/l		20 mg/l		5 mg/l		mg/l		500 mg/l		mg/l		20 mg/l	
August 2023	0.0	C	0.0	C	0.0	C	0.0		117	C	0.0		0.1	C
September 2023	0.0	C	0.0	C	0.0	C	0.0		142	C	0.0		0.2	C
October 2023	0.0	C	0.0	C	0.0	C	0.0		111	C	0.0		0.1	C
November 2023	0.0	C	0.0	C	0.0	C	0.0		84.0	C	0.0		0.1	C
December 2023	0.0	C	0.0	C	0.0	C	0.0		117	C	0.0		0.4	C
January 2024	0.0	C	0.0	C	0.0	C	0.0		37.0	C	0.0		0.2	C
February 2024	0.0	C	0.0	C	0.0	C	0.0		109	C	0.0		0.1	C
March 2024	0.0	C	0.0	C	0.0	C	0.0		61.0	C	0.0		0.0	C
April 2024	0.0	C	0.0	C	0.0	C	0.0		69.0	C	0.0		0.1	C

C = Compliant

N = Non-compliant

NS = No Sample Received

NA = Unable to Analyse

CERTIFICATE OF ANALYSES

CONFIDENTIAL

Identification	UTH East London Cambridge Effluent Plant	Report/Lab number	0236/24
Customer	Transnet Engineering	Date Sampled	03/04/2024
Contact Person	Mmalaka Phejane	Date Received	11/04/2024
Contact number	012 391 1320	Date Started-Completed In-house	11-22/04/2024
Email Address	Mmalaka.Phejane@transnet.net	Sub Completed	06/05/2024
Physical Address	160 Lynette Street, Kilner Park, Pretoria	Date of Report	06/05/2024

A N S	Determinants	Unit	Method	Sample ID
				0236-01
N	Temperature	°C	-	19.9
A	pH Value at 25°C	-	LA001	7.3
A	Conductivity	mS/m	LA003	37
A	Chemical Oxygen Demand	mg/l	LA013	121
N	Total Suspended Solids	mg/l	LA006	12
A	Chloride - Cl	mg/l	LA029	46
A	Sulphate - SO ₄	mg/l	LA030	33
S	Oil & Grease	mg/l	-	4.00
A	Ortho-Phosphate - P	mg/l	LA028	<1.0
A	Ammonia - NH ₃ as N	mg/l	LA033	<0.5
S	Arsenic - As	mg/l	-	0.001
S	Boron - B	mg/l	-	0.316
S	Cadmium - Cd	mg/l	-	<0.001
S	Chromium - Cr	mg/l	-	<0.025
S	Cobalt - Co	mg/l	-	<0.025
S	Copper - Cu	mg/l	-	<0.010
S	Iron - Fe	mg/l	-	0.918
S	Lead - Pb	mg/l	-	0.003
S	Manganese - Mn	mg/l	-	0.198
S	Mercury - Hg	mg/l	-	<0.001
S	Molybdenum - Mo	mg/l	-	<0.025
S	Nickel - Ni	mg/l	-	<0.025

NA - No Analysis done due to incompatible sample matrix; A – SANAS Accredited Method, N – Method Not Accredited – Results marked "N" in this report are not included in the SANAS Schedule of Accreditation for this laboratory; S – indicates Subcontracted Test - Results marked "Subcontracted Test" in this report are not included in the SANAS Schedule of Accreditation for this laboratory. Results only apply to the samples as received and tested.

Uncertainty of Measurement data (for methods included in the SANAS Schedule of Accreditation) is available on request, as are dates of analysis for each parameter tested. The report shall not be reproduced except in full without approval of the laboratory. Sampling dates and sample identification are given from information provided by the customer.

R Lax
Technical Signatory

CERTIFICATE OF ANALYSES

CONFIDENTIAL

A N S	Determinants	Unit	Method	Sample ID
				0236-01
S	Selenium - Se	mg/l	-	<0.001
S	Silver - Ag	mg/l	-	<0.025
S	Sodium - Na	mg/l	-	69
S	Titanium - Ti	mg/l	-	<0.03
S	Zinc - Zn	mg/l	-	0.073
End of Certificate				

Comments (sample damages/leakages, also state if this report replaces any other report (ammended)) :

NA - No Analysis done due to incompatible sample matrix; A – SANAS Accredited Method, N – Method Not Accredited – Results marked "N" in this report are not included in the SANAS Schedule of Accreditation for this laboratory; S – indicates Subcontracted Test - Results marked "Subcontracted Test" in this report are not included in the SANAS Schedule of Accreditation for this laboratory. Results only apply to the samples as received and tested.

Uncertainty of Measurement data (for methods included in the SANAS Schedule of Accreditation) is available on request, as are dates of analysis for each parameter tested. The report shall not be reproduced except in full without approval of the laboratory. Sampling dates and sample identification are given from information provided by the customer.

R Lax
Technical Signatory