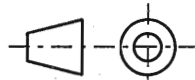
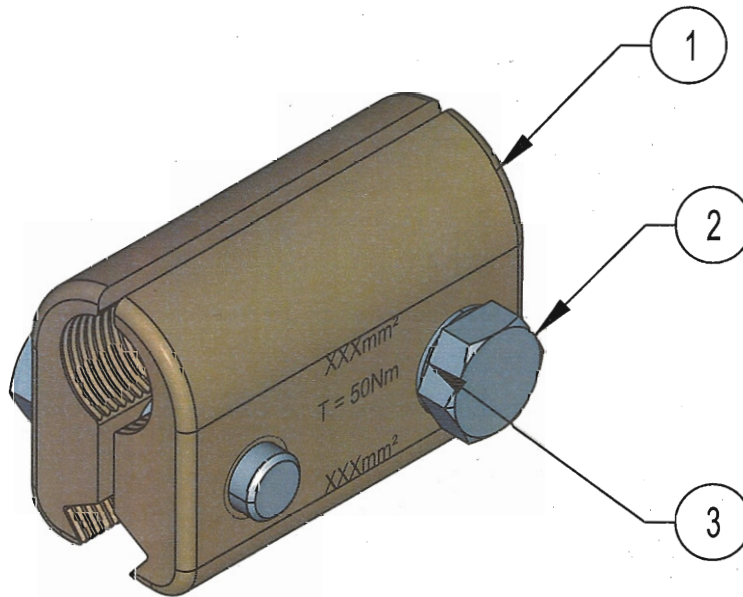


NOTES

1. FEEDER CLAMP TO SPECIFICATION CEE 0063.
2. FEEDER CLAMP TO BE SUPPLIED AS A COMPLETE ASSEMBLY.

STORES ITEM NO. FOR 107mm ² CONTACT WIRE	STORES ITEM NO. FOR 161mm ² CONTACT WIRE	COPPER CONDUCTOR SIZES
54014849	54000920	50mm ² / 63mm ² / 70mm ²
54014850	54001949	80mm ² / 100mm ²
54014862	54004930	160mm ²
54014874	54004954	250mm ²



3	LOCKING WASHER, INTERNALLY TOOTHED, STAINLESS STEEL TO SPEC. AISI GR 304, M12.	2	-	-
2	BOLT, HEXAGON HEAD, STAINLESS STEEL TO SPEC. AISI GR 304, M12 x 35 LONG.	2	-	-
1	FEEDER HALF CLAMP FOR 161mm ² CONTACT WIRE.	2	-	BBH2142 SHT 2
	FEEDER HALF CLAMP FOR 107mm ² CONTACT WIRE.	2	-	BBH2142 SHT 1
ITEM NO	DESCRIPTION	QTY	STORES ITEM NO	DRAWING NO

© COPYRIGHT PROTECTED. PREPARED BY CENTRAL DRAWING OFFICE

DIMENSIONS : mm SCALE : 1 : 1
TOLERANCE : LIN ± 0,5 ANG ± 0,5° ITEM NO : -
MATERIAL : -

2019-05-28

APPROVED: S SMIT

2019-05-28

AUTHORISED: L O BORCHARD

FEEDER CLAMP ASSEMBLY
FOR 107mm² AND 161mm²
Cu. CONTACT WIRE

TRANSNET
freight rail

BBH2142
VERSION 1

A4

DO REF: CDO/9365

ECP REF: -

DRAWN: D HATTINGH

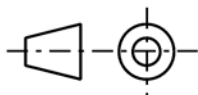
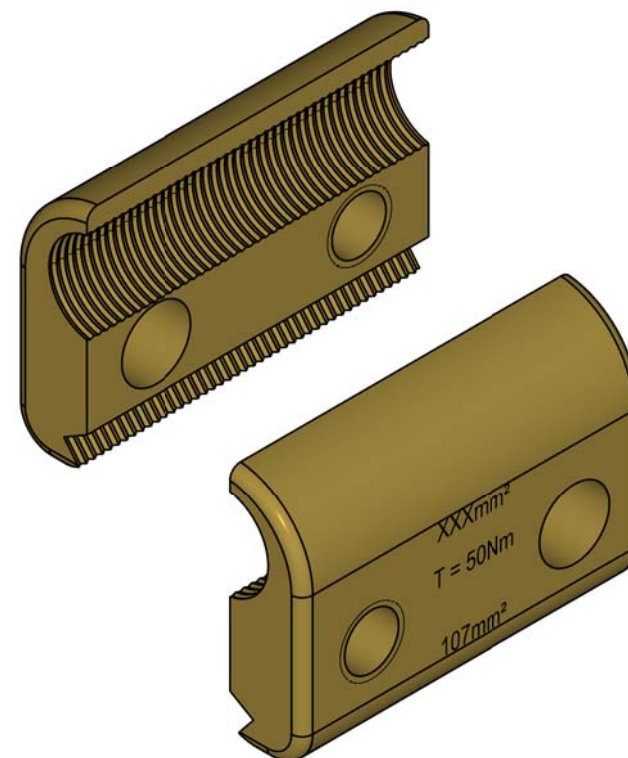
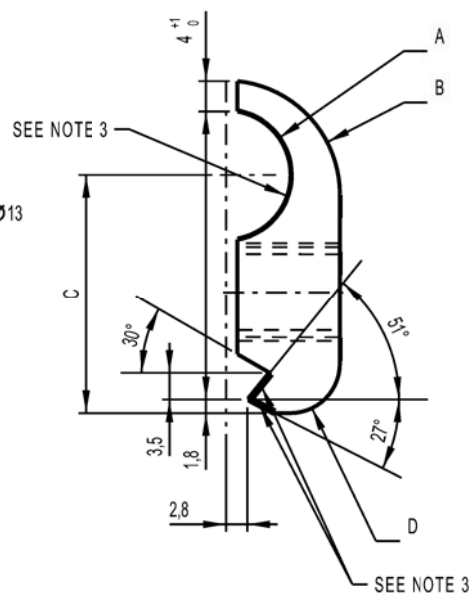
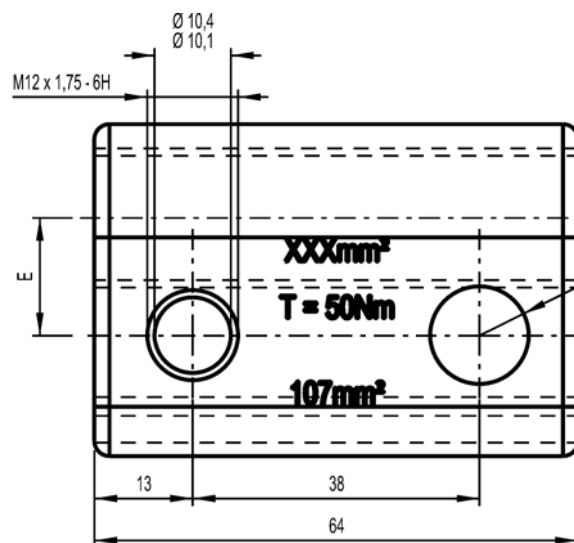
DESIGNED: -

CHECKED: D HATTINGH

NOTES

- FEEDER CLAMP TO SPECIFICATION CEE 0063.
- THE FOLLOWING PERMANENT MARKINGS MUST APPEAR ON THIS ARTICLE:
 - TRANSNET LOGO.
 - MANUFACTURERS IDENTIFICATION.
 - DATED BATCH NUMBER.
 - WIRE SIZES.
 - TORQUE AS "T = 50Nm".
- THESE SURFACES TO BE SERRATED: 1,5 PITCH x 0,3 DEEP.
- ALL UNSPECIFIED RADII R2.

COPPER CONDUCTOR SIZES	DIMENSIONS				
	A	B	C	D	E
50mm ² / 63mm ² / 70mm ²	4,5 ⁰ _{-0,5}	15 ⁰ _{-0,5}	27,5	6,5	11,5
80mm ² / 100mm ²	6,5 ⁰ _{-0,5}	15 ⁰ _{-0,5}	29,5	6,5	13,5
160mm ²	8,5 ⁰ _{-0,5}	15 ⁰ _{-0,5}	31,5	6,5	15,5
250mm ²	10,5 ⁰ _{-0,5}	18 ⁰ _{-0,5}	33,5	9,5	18



DIMENSIONS : mm SCALE : 1 : 1
 TOLERANCE : LIN ± 0,5 ANG ± 0,5°
 MATERIAL : Cu-Ni-Si TO SPEC. CEE 0063.

FEEDER HALF CLAMP FOR
 107mm² Cu. CONTACT WIRE

TRANSNET
 freight rail

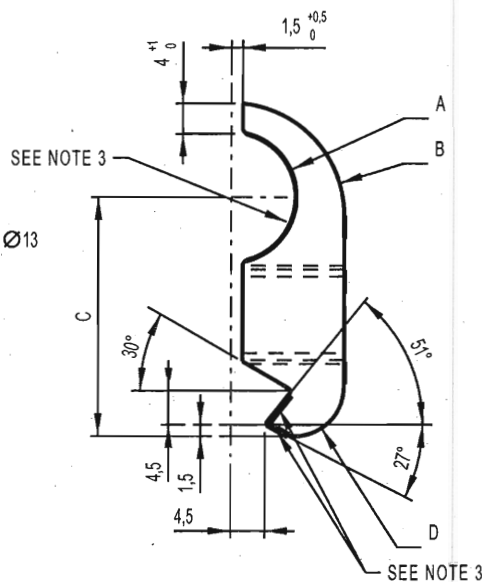
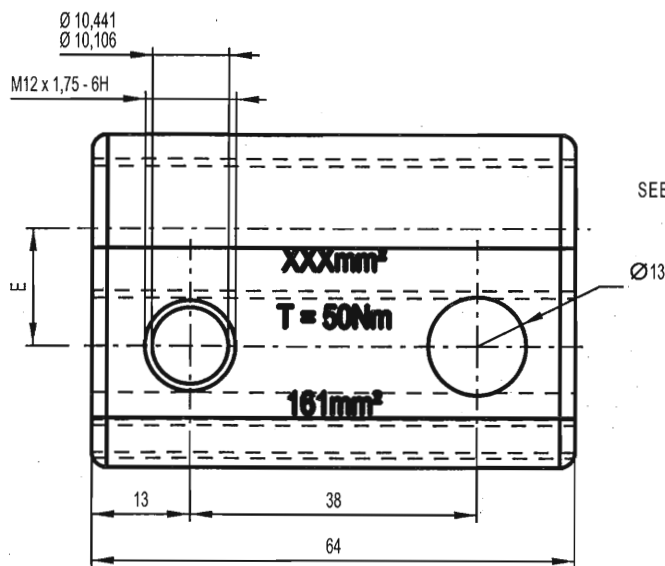
BBH2142 SHT 1

VERSION 1

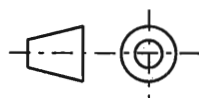
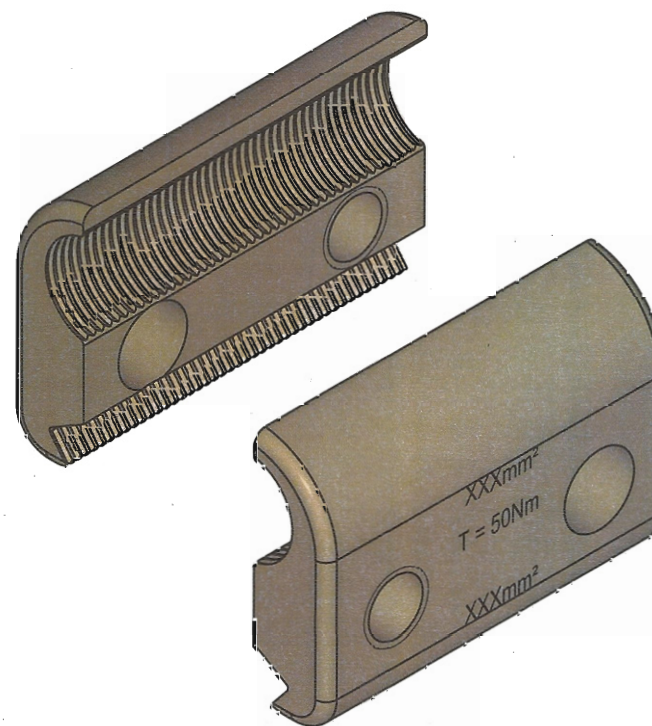
A4

NOTES

1. FEEDER CLAMP TO SPECIFICATION CEE 0063.
2. THE FOLLOWING PERMANENT MARKINGS MUST APPEAR ON THIS ARTICLE:
 - a) TRANSNET LOGO.
 - b) MANUFACTURERS IDENTIFICATION.
 - c) DATED BATCH NUMBER.
 - d) WIRE SIZES.
 - e) TORQUE AS "T = 50Nm".
3. THESE SURFACES TO BE SERRATED: 1,5 PITCH x 0,3 DEEP.
4. ALL UNSPECIFIED RADII R2.



COPPER CONDUCTOR SIZES	DIMENSIONS				
	A	B	C	D	E
50mm²	4,5 ⁰ _{-0,5}	15 ⁰ _{-0,5}	27,5	6,5	11,5
80mm² / 100mm²	6,5 ⁰ _{-0,5}	15 ⁰ _{-0,5}	29,5	6,5	13,5
160mm²	8,5 ⁰ _{-0,5}	15 ⁰ _{-0,5}	31,5	6,5	15,5
250mm²	10,5 ⁰ _{-0,5}	18 ⁰ _{-0,5}	33,5	9,5	18



DIMENSIONS : mm SCALE : 1 : 1
 TOLERANCE : LIN ± 0,5 ANG ± 0,5
 MATERIAL : Cu-Ni-Si TO SPEC CEE 0063.

FEEDER HALF CLAMP FOR
 161mm² Cu. CONTACT WIRE

TRANSNET
 freight rail

BBH2142 SHT 2

VERSION 1