

5602-1-135
 THIRD ANGLE PROJECTION
 ALL DIMENSIONS IN MILLIMETRES
 ALL WELD SYMBOLS ARE IN ACCORDANCE WITH SABS 044: PART 2-1963

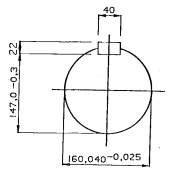
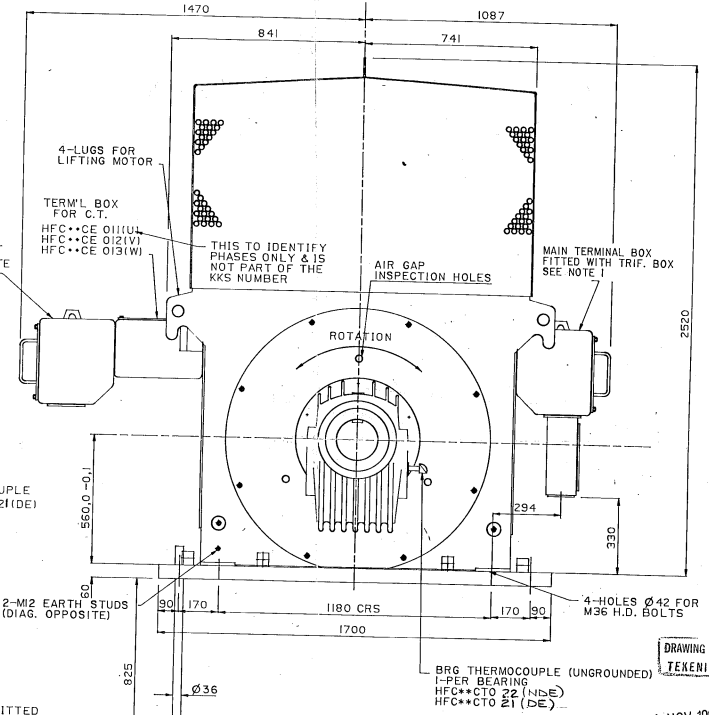
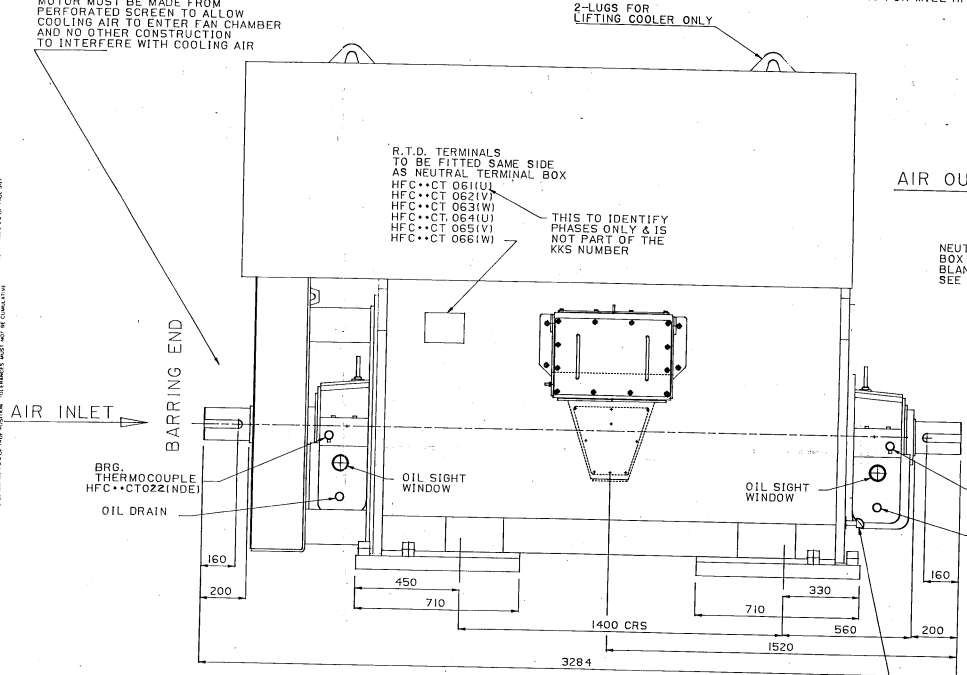
NO.	DESCRIPTION	MAT'L	QTY	REMARKS

NOTE:-
 1. TERMINAL BOX POSITIONS AS SHOWN FOR MOTORS 0405 & 06 FITTED ON OPPOSITE SIDE FOR MOTORS 01, 02 & 03. SEE TABLE FOR MOTOR ASSIGNMENT.
 2. TO BE REPLACED BY:
 50 FOR MILL HFC50 AJ001-MO (MILL A)
 40 FOR MILL HFC40 AJ001-MO (MILL B)
 30 FOR MILL HFC30 AJ001-MO (MILL C)
 20 FOR MILL HFC20 AJ001-MO (MILL D)
 10 FOR MILL HFC10 AJ001-MO (MILL E)

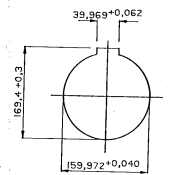
MOTOR N°	MILL N°
01	HFC 50 AJ001(A)
02	HFC 40 AJ001(B)
03	SPARE
04	HFC 30 AJ001(C)
05	HFC 20 AJ001(D)
06	HFC 10 AJ001(E)

DRAWING NOT YET APPROVED ON
 DATE:
 DATE APPROVED ON
 DATE: 7.12.94

NOTE:-
 COUPLING GUARD FOR N.D.E. OF MOTOR MUST BE MADE FROM PERFORATED SCREEN TO ALLOW COOLING AIR TO ENTER FAN CHAMBER AND NO OTHER CONSTRUCTION TO INTERFERE WITH COOLING AIR



SHAFT ENDS



COUPLING BORE

21 M 3364
 7500003 local
 87-07-03
 THIS DRAWING SHOULD ONLY BE USED IN CONNECTION WITH THE ABOVE ORDER NUMBER.

STATIC LOAD = 27000 N
 DYNAMIC LOAD = 102000 N

BEARINGS:- DIA.160 SLEEVE
 LUBRICANT:- TH 32 HB 8 LITRES PER BRG.
 BEARINGS INSULATED

KW 1850 R.P.M. 991 STATOR AMPS. 203 STATOR VOLTS 6600 PH 3 HZ 50

THIS MOTOR IS FITTED WITH BEARINGS ALLOWING A SELF-CONTAINED FLOAT OF 6MM I.E. 3MM EACH SIDE OF CENTRAL RUNNING POSITION. IF FITTED WITH A FLEXIBLE COUPLING THIS MUST BE OF THE FLOAT-LIMITING TYPE THUS ENSURING THAT NO EXTERNAL THRUST IS TRANSMITTED TO THE MOTOR BEARINGS.

CE CONTRACT NO.1001
 CE CUSTOMER'S NAME ESCOM-KENDAL
 CE PURCHASE ORDER NO.: 7500009-1001
 USE: MILL MOTOR
 ESCOM CONTRACT NO. 11862
 CONNECTION DIAGRAM: 9964-3-450
 C.T. TERMINAL ASSEMBLY: 9962-2-671

CONTRACT/ORDER NO.: OPJ 11595
 ESCOM DRG NO.: 0.64/16470

0.6416470 R.S
G.E.C.
 GEC MACHINES (PTY) LTD. BENONI, TRANSVAAL

OUTLINE FOR UD 560X/140
 MILL MOTOR FOR KENDAL P.S.
 REFERENCE DRAWING NUMBER
 5602-1-135 5
 SCALE 1:10
 DATE 7.12.94

NO.	DESCRIPTION	DATE	BY	CHKD.
1	DESIGNED	25-12-93		
2	CHECKED	27-12-93		
3	APPROVED	27-12-93		
4	ISSUED	27-12-93		
5	REVISION			

NO.	DESCRIPTION	DATE	BY	CHKD.
1	DESIGNED	25-12-93		
2	CHECKED	27-12-93		
3	APPROVED	27-12-93		
4	ISSUED	27-12-93		
5	REVISION			

SCALE 1:10